

EXTRACTION OIL & GAS

**Weld County
Sec 21-T5N-R65W
AD-DAIRY 2-20-24**

ORIGINAL WELLBORE

Plan: PROPOSAL #1

Standard Planning Report

13 February, 2017



Project: Weld County
Site: Sec 21-T5N-R65W
Well: AD-DAIRY 2-20-24
Wellbore: ORIGINAL WELLBORE
Design: PROPOSAL #1



Azimuths to True North
Magnetic North: 8.28°

Magnetic Field
Strength: 52516.3nT
Dip Angle: 66.88°
Date: 5/22/2016
Model: IGRF2015

WELL DETAILS: AD-DAIRY 2-20-24

+N/-S	+E/-W	Northing	Ground Level:	4639.0	Latitude	Longitude	Slot
0.0	0.0	1383377.99	Easting	3229413.57	40° 22' 58.260 N	104° 40' 35.328 W	

ANNOTATIONS

MD	Inc	Azi	TVD	+N/-S	+E/-W	VSect	Departure	Annotation
3507.0	0.00	0.00	3507.0	0.0	0.0	0.0	0.0	Build 2°/100'
3949.4	8.85	216.52	3947.7	-27.4	-20.3	-27.4	34.1	Hold 8.85° Inc
6525.2	8.85	216.52	6492.7	-345.8	-256.0	-345.8	430.3	KOP, Build 10°/100'
7373.5	90.00	270.68	7010.0	-404.3	-827.4	-404.3	1009.7	LP @ 90° Inc, 270.68° Azm Hold
19696.1	90.00	270.68	7010.0	-258.8	-13149.2	-258.8	13332.4	TD at 19696.1' MD

SECTION DETAILS

Sec	MD	Inc	Azi	TVD	+N/-S	+E/-W	Dleg	TFace	VSect	Target
1	0.0	0.00	0.00	0.0	0.0	0.0	0.00	0.00	0.0	
2	3507.0	0.00	0.00	3507.0	0.0	0.0	0.00	0.00	0.0	
3	3949.4	8.85	216.52	3947.7	-27.4	-20.3	2.00	216.52	20.8	
4	6525.2	8.85	216.52	6492.7	-345.8	-256.0	0.00	0.00	262.8	
5	7373.5	90.00	270.68	7010.0	-404.3	-827.4	10.00	54.49	835.2	HZ LANDING PNT -
6	19696.1	90.00	270.68	7010.0	-258.8	-13149.2	0.00	0.00	13151.7	BHL - AD-DAIRY 2-

DESIGN TARGET DETAILS

Name	TVD	+N/-S	+E/-W	Northing	Easting	Latitude	Longitude	Shape
BHL - AD-DAIRY 2-20-24	7010.0	-258.8	-13149.2	1382997.10	3216267.39	40° 22' 55.668 N	104° 43' 25.248 W	Point
HZ LANDING PNT - AD-DAIRY 2-20-24	7010.0	-404.3	-827.4	1382965.98	3228589.97	40° 22' 54.264 N	104° 40' 46.020 W	Point

FORMATION TOP DETAILS

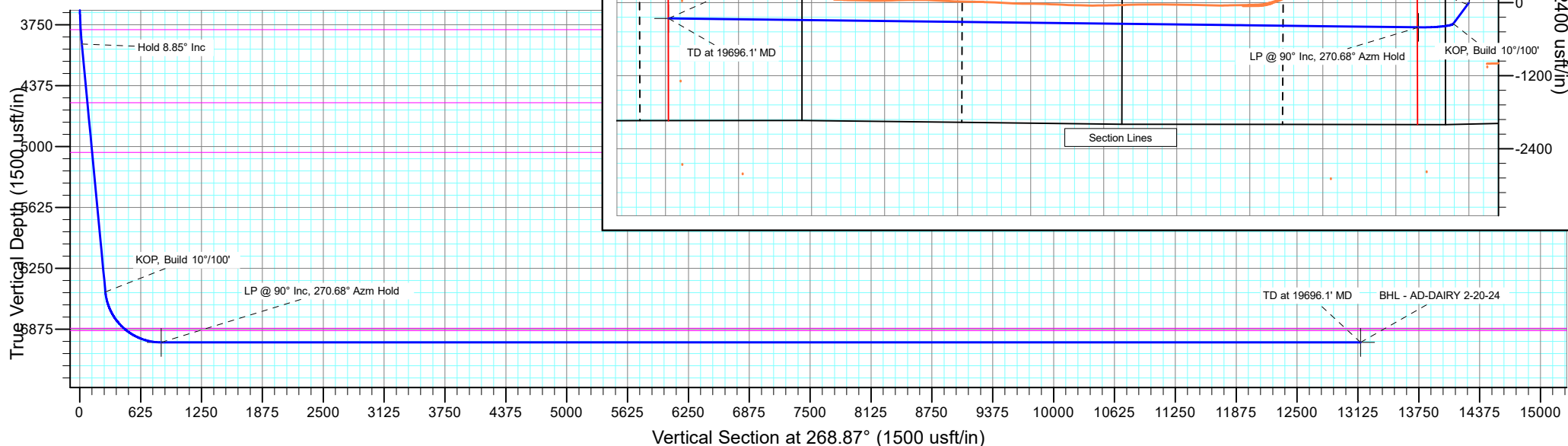
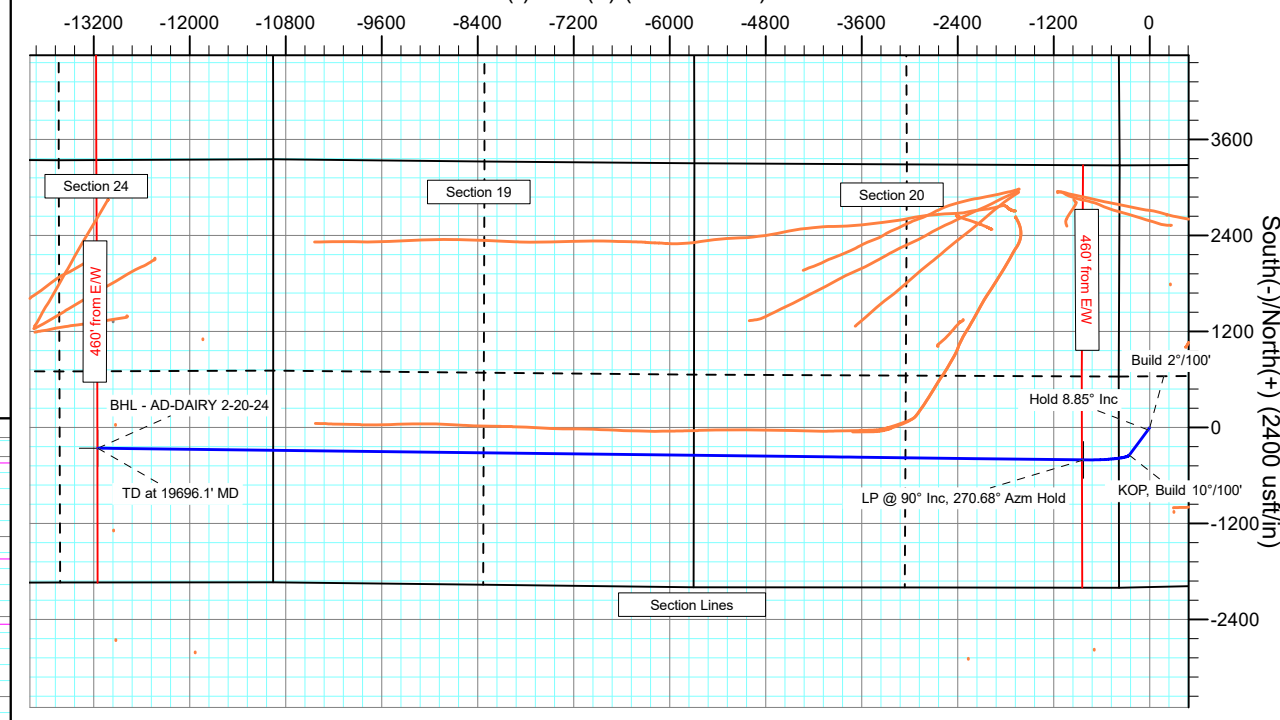
TVDPath	MDPath	Formation
3800.0	3800.5	PARKMAN
4550.0	4559.0	SUSSEX
5060.0	5075.2	SHANNON
6865.0	6955.0	SHARON SPRINGS
6890.0	6994.3	NIOBRARA

PROJECT DETAILS: Weld County

Geodetic System: US State Plane 1983
Datum: North American Datum 1983
Ellipsoid: GRS 1980
Zone: Colorado Northern Zone
System Datum: Mean Sea Level

SHL:
368' FWL, 1996' FSL
Sec 21-T5N-R65W
LP:
1598' FSL, 460' FEL
Sec 20-T5N-R65W
BHL:
1678' FSL, 2210' FEL
Sec 24-T5N-R66W

West(-)/East(+) (2400 usft/in)



Planning Report

Database:	EDT_32Bit_ODBC	Local Co-ordinate Reference:	Well AD-DAIRY 2-20-24
Company:	EXTRACTION OIL & GAS	TVD Reference:	KB-EST @ 4655.0usft (Original Well Elev)
Project:	Weld County	MD Reference:	KB-EST @ 4655.0usft (Original Well Elev)
Site:	Sec 21-T5N-R65W	North Reference:	True
Well:	AD-DAIRY 2-20-24	Survey Calculation Method:	Minimum Curvature
Wellbore:	ORIGINAL WELLBORE		
Design:	PROPOSAL #1		

Project	Weld County		
Map System:	US State Plane 1983	System Datum:	Mean Sea Level
Geo Datum:	North American Datum 1983		
Map Zone:	Colorado Northern Zone		

Site		Sec 21-T5N-R65W			
Site Position:		Northing:	1,383,619.20 usft	Latitude:	40° 23' 0.636 N
From:	Lat/Long	Easting:	3,229,494.91 usft	Longitude:	104° 40' 34.248 W
Position Uncertainty:	0.0 usft	Slot Radius:	13.200 in	Grid Convergence:	0.53 °

Well	AD-DAIRY 2-20-24					
Well Position	+N/-S	-240.4 usft	Northing:	1,383,377.99 usft	Latitude:	40° 22' 58.260 N
	+E/-W	-83.6 usft	Easting:	3,229,413.58 usft	Longitude:	104° 40' 35.328 W
Position Uncertainty		0.0 usft	Wellhead Elevation:		Ground Level:	4,639.0 usft

Wellbore	ORIGINAL WELLBORE				
Magnetics	Model Name	Sample Date	Declination (°)	Dip Angle (°)	Field Strength (nT)
	IGRF2015	5/22/2016	8.28	66.88	52,516.27200820

Design	PROPOSAL #1			
Audit Notes:				
Version:	Phase:	PROTOTYPE	Tie On Depth:	0.0
Vertical Section:	Depth From (TVD) (usft)	+N/-S (usft)	+E/-W (usft)	Direction (°)
	0.0	0.0	0.0	0.00

Plan Survey Tool Program			Date	2/13/2017	
Depth From (usft)	Depth To (usft)	Survey (Wellbore)	Tool Name	Remarks	
1	0.0	19,696.1	PROPOSAL #1 (ORIGINAL WEL	MWD OWSG Rev 2	
				OWSG MWD - Standard	

Plan Sections										
Measured Depth (usft)	Inclination (°)	Azimuth (°)	Vertical Depth (usft)	+N/-S (usft)	+E/-W (usft)	Dogleg Rate (°/100ft)	Build Rate (°/100ft)	Turn Rate (°/100ft)	TFO (°)	Target
0.0	0.00	0.00	0.0	0.0	0.0	0.00	0.00	0.00	0.00	
3,507.0	0.00	0.00	3,507.0	0.0	0.0	0.00	0.00	0.00	0.00	
3,949.4	8.85	216.52	3,947.7	-27.4	-20.3	2.00	2.00	0.00	216.52	
6,525.2	8.85	216.52	6,492.7	-345.8	-256.0	0.00	0.00	0.00	0.00	
7,373.5	90.00	270.68	7,010.0	-404.3	-827.4	10.00	9.57	6.38	54.49	HZ LANDING PNT - F
19,696.1	90.00	270.68	7,010.0	-258.8	-13,149.2	0.00	0.00	0.00	0.00	BHL - AD-DAIRY 2-20

Planning Report

Database:	EDT_32Bit_ODBC	Local Co-ordinate Reference:	Well AD-DAIRY 2-20-24
Company:	EXTRACTION OIL & GAS	TVD Reference:	KB-EST @ 4655.0usft (Original Well Elev)
Project:	Weld County	MD Reference:	KB-EST @ 4655.0usft (Original Well Elev)
Site:	Sec 21-T5N-R65W	North Reference:	True
Well:	AD-DAIRY 2-20-24	Survey Calculation Method:	Minimum Curvature
Wellbore:	ORIGINAL WELLBORE		
Design:	PROPOSAL #1		

Planned Survey									
Measured Depth (usft)	Inclination (°)	Azimuth (°)	Vertical Depth (usft)	+N/-S (usft)	+E/-W (usft)	Vertical Section (usft)	Dogleg Rate (°/100ft)	Build Rate (°/100ft)	Turn Rate (°/100ft)
0.0	0.00	0.00	0.0	0.0	0.0	0.0	0.00	0.00	0.00
100.0	0.00	0.00	100.0	0.0	0.0	0.0	0.00	0.00	0.00
200.0	0.00	0.00	200.0	0.0	0.0	0.0	0.00	0.00	0.00
300.0	0.00	0.00	300.0	0.0	0.0	0.0	0.00	0.00	0.00
400.0	0.00	0.00	400.0	0.0	0.0	0.0	0.00	0.00	0.00
500.0	0.00	0.00	500.0	0.0	0.0	0.0	0.00	0.00	0.00
600.0	0.00	0.00	600.0	0.0	0.0	0.0	0.00	0.00	0.00
700.0	0.00	0.00	700.0	0.0	0.0	0.0	0.00	0.00	0.00
800.0	0.00	0.00	800.0	0.0	0.0	0.0	0.00	0.00	0.00
900.0	0.00	0.00	900.0	0.0	0.0	0.0	0.00	0.00	0.00
1,000.0	0.00	0.00	1,000.0	0.0	0.0	0.0	0.00	0.00	0.00
1,100.0	0.00	0.00	1,100.0	0.0	0.0	0.0	0.00	0.00	0.00
1,200.0	0.00	0.00	1,200.0	0.0	0.0	0.0	0.00	0.00	0.00
1,300.0	0.00	0.00	1,300.0	0.0	0.0	0.0	0.00	0.00	0.00
1,400.0	0.00	0.00	1,400.0	0.0	0.0	0.0	0.00	0.00	0.00
1,500.0	0.00	0.00	1,500.0	0.0	0.0	0.0	0.00	0.00	0.00
1,600.0	0.00	0.00	1,600.0	0.0	0.0	0.0	0.00	0.00	0.00
1,700.0	0.00	0.00	1,700.0	0.0	0.0	0.0	0.00	0.00	0.00
1,800.0	0.00	0.00	1,800.0	0.0	0.0	0.0	0.00	0.00	0.00
1,900.0	0.00	0.00	1,900.0	0.0	0.0	0.0	0.00	0.00	0.00
2,000.0	0.00	0.00	2,000.0	0.0	0.0	0.0	0.00	0.00	0.00
2,100.0	0.00	0.00	2,100.0	0.0	0.0	0.0	0.00	0.00	0.00
2,200.0	0.00	0.00	2,200.0	0.0	0.0	0.0	0.00	0.00	0.00
2,300.0	0.00	0.00	2,300.0	0.0	0.0	0.0	0.00	0.00	0.00
2,400.0	0.00	0.00	2,400.0	0.0	0.0	0.0	0.00	0.00	0.00
2,500.0	0.00	0.00	2,500.0	0.0	0.0	0.0	0.00	0.00	0.00
2,600.0	0.00	0.00	2,600.0	0.0	0.0	0.0	0.00	0.00	0.00
2,700.0	0.00	0.00	2,700.0	0.0	0.0	0.0	0.00	0.00	0.00
2,800.0	0.00	0.00	2,800.0	0.0	0.0	0.0	0.00	0.00	0.00
2,900.0	0.00	0.00	2,900.0	0.0	0.0	0.0	0.00	0.00	0.00
3,000.0	0.00	0.00	3,000.0	0.0	0.0	0.0	0.00	0.00	0.00
3,100.0	0.00	0.00	3,100.0	0.0	0.0	0.0	0.00	0.00	0.00
3,200.0	0.00	0.00	3,200.0	0.0	0.0	0.0	0.00	0.00	0.00
3,300.0	0.00	0.00	3,300.0	0.0	0.0	0.0	0.00	0.00	0.00
3,400.0	0.00	0.00	3,400.0	0.0	0.0	0.0	0.00	0.00	0.00
3,507.0	0.00	0.00	3,507.0	0.0	0.0	0.0	0.00	0.00	0.00
Build 2°/100'									
3,600.0	1.86	216.52	3,600.0	-1.2	-0.9	-1.2	2.00	2.00	0.00
3,700.0	3.86	216.52	3,699.9	-5.2	-3.9	-5.2	2.00	2.00	0.00
3,800.0	5.86	216.52	3,799.5	-12.0	-8.9	-12.0	2.00	2.00	0.00
3,800.5	5.87	216.52	3,800.0	-12.1	-8.9	-12.1	2.00	2.00	0.00
PARKMAN									
3,900.0	7.86	216.52	3,898.8	-21.6	-16.0	-21.6	2.00	2.00	0.00
3,949.4	8.85	216.52	3,947.7	-27.4	-20.3	-27.4	2.00	2.00	0.00
Hold 8.85° Inc									
4,000.0	8.85	216.52	3,997.6	-33.7	-24.9	-33.7	0.00	0.00	0.00
4,100.0	8.85	216.52	4,096.5	-46.0	-34.1	-46.0	0.00	0.00	0.00
4,200.0	8.85	216.52	4,195.3	-58.4	-43.2	-58.4	0.00	0.00	0.00
4,300.0	8.85	216.52	4,294.1	-70.7	-52.4	-70.7	0.00	0.00	0.00
4,400.0	8.85	216.52	4,392.9	-83.1	-61.5	-83.1	0.00	0.00	0.00
4,500.0	8.85	216.52	4,491.7	-95.5	-70.7	-95.5	0.00	0.00	0.00
4,559.0	8.85	216.52	4,550.0	-102.8	-76.1	-102.8	0.00	0.00	0.00
SUSSEX									

Planning Report

Database:	EDT_32Bit_ODBC	Local Co-ordinate Reference:	Well AD-DAIRY 2-20-24
Company:	EXTRACTION OIL & GAS	TVD Reference:	KB-EST @ 4655.0usft (Original Well Elev)
Project:	Weld County	MD Reference:	KB-EST @ 4655.0usft (Original Well Elev)
Site:	Sec 21-T5N-R65W	North Reference:	True
Well:	AD-DAIRY 2-20-24	Survey Calculation Method:	Minimum Curvature
Wellbore:	ORIGINAL WELLBORE		
Design:	PROPOSAL #1		

Planned Survey									
Measured Depth (usft)	Inclination (°)	Azimuth (°)	Vertical Depth (usft)	+N/-S (usft)	+E/-W (usft)	Vertical Section (usft)	Dogleg Rate (°/100ft)	Build Rate (°/100ft)	Turn Rate (°/100ft)
4,600.0	8.85	216.52	4,590.5	-107.8	-79.8	-107.8	0.00	0.00	0.00
4,700.0	8.85	216.52	4,689.3	-120.2	-89.0	-120.2	0.00	0.00	0.00
4,800.0	8.85	216.52	4,788.1	-132.6	-98.1	-132.6	0.00	0.00	0.00
4,900.0	8.85	216.52	4,886.9	-144.9	-107.3	-144.9	0.00	0.00	0.00
5,000.0	8.85	216.52	4,985.7	-157.3	-116.4	-157.3	0.00	0.00	0.00
5,075.2	8.85	216.52	5,060.0	-166.6	-123.3	-166.6	0.00	0.00	0.00
SHANNON									
5,100.0	8.85	216.52	5,084.6	-169.6	-125.6	-169.6	0.00	0.00	0.00
5,200.0	8.85	216.52	5,183.4	-182.0	-134.7	-182.0	0.00	0.00	0.00
5,300.0	8.85	216.52	5,282.2	-194.4	-143.9	-194.4	0.00	0.00	0.00
5,400.0	8.85	216.52	5,381.0	-206.7	-153.1	-206.7	0.00	0.00	0.00
5,500.0	8.85	216.52	5,479.8	-219.1	-162.2	-219.1	0.00	0.00	0.00
5,600.0	8.85	216.52	5,578.6	-231.4	-171.4	-231.4	0.00	0.00	0.00
5,700.0	8.85	216.52	5,677.4	-243.8	-180.5	-243.8	0.00	0.00	0.00
5,800.0	8.85	216.52	5,776.2	-256.2	-189.7	-256.2	0.00	0.00	0.00
5,900.0	8.85	216.52	5,875.0	-268.5	-198.8	-268.5	0.00	0.00	0.00
6,000.0	8.85	216.52	5,973.8	-280.9	-208.0	-280.9	0.00	0.00	0.00
6,100.0	8.85	216.52	6,072.7	-293.3	-217.1	-293.3	0.00	0.00	0.00
6,200.0	8.85	216.52	6,171.5	-305.6	-226.3	-305.6	0.00	0.00	0.00
6,300.0	8.85	216.52	6,270.3	-318.0	-235.4	-318.0	0.00	0.00	0.00
6,400.0	8.85	216.52	6,369.1	-330.3	-244.6	-330.3	0.00	0.00	0.00
6,500.0	8.85	216.52	6,467.9	-342.7	-253.7	-342.7	0.00	0.00	0.00
6,525.2	8.85	216.52	6,492.7	-345.8	-256.0	-345.8	0.00	0.00	0.00
KOP, Build 10°/100'									
6,550.0	10.49	227.69	6,517.2	-348.9	-258.8	-348.9	10.00	6.59	44.99
6,600.0	14.52	241.53	6,566.1	-354.9	-267.7	-354.9	10.00	8.07	27.66
6,650.0	19.02	249.20	6,613.9	-360.8	-280.9	-360.8	10.00	8.99	15.35
6,700.0	23.71	253.98	6,660.5	-366.5	-298.2	-366.5	10.00	9.38	9.55
6,750.0	28.50	257.24	6,705.4	-371.9	-319.5	-371.9	10.00	9.58	6.52
6,800.0	33.35	259.62	6,748.2	-377.0	-344.6	-377.0	10.00	9.70	4.77
6,850.0	38.23	261.46	6,788.8	-381.8	-373.5	-381.8	10.00	9.77	3.68
6,900.0	43.14	262.94	6,826.7	-386.2	-405.8	-386.2	10.00	9.81	2.96
6,950.0	48.06	264.17	6,861.7	-390.2	-441.2	-390.2	10.00	9.84	2.46
6,955.0	48.55	264.28	6,865.0	-390.6	-445.0	-390.6	10.00	9.86	2.25
SHARON SPRINGS									
6,994.3	52.43	265.11	6,890.0	-393.4	-475.1	-393.4	10.00	9.87	2.11
NIOBRARA									
7,000.0	52.99	265.22	6,893.4	-393.7	-479.7	-393.7	10.00	9.88	1.98
7,050.0	57.94	266.14	6,921.8	-396.8	-520.7	-396.8	10.00	9.88	1.85
7,100.0	62.88	266.97	6,946.5	-399.4	-564.1	-399.4	10.00	9.90	1.66
7,150.0	67.84	267.73	6,967.3	-401.5	-609.5	-401.5	10.00	9.90	1.52
7,200.0	72.79	268.44	6,984.1	-403.1	-656.5	-403.1	10.00	9.91	1.41
7,250.0	77.75	269.11	6,996.8	-404.1	-704.9	-404.1	10.00	9.92	1.34
7,300.0	82.71	269.75	7,005.3	-404.6	-754.1	-404.6	10.00	9.92	1.29
7,350.0	87.67	270.38	7,009.5	-404.6	-803.9	-404.6	10.00	9.92	1.26
7,373.5	90.00	270.68	7,010.0	-404.3	-827.4	-404.3	10.00	9.92	1.25
LP @ 90° Inc, 270.68° Azm Hold									
7,400.0	90.00	270.68	7,010.0	-404.0	-853.9	-404.0	0.00	0.00	0.00
7,500.0	90.00	270.68	7,010.0	-402.9	-953.9	-402.9	0.00	0.00	0.00
7,600.0	90.00	270.68	7,010.0	-401.7	-1,053.9	-401.7	0.00	0.00	0.00
7,700.0	90.00	270.68	7,010.0	-400.5	-1,153.9	-400.5	0.00	0.00	0.00
7,800.0	90.00	270.68	7,010.0	-399.3	-1,253.9	-399.3	0.00	0.00	0.00
7,900.0	90.00	270.68	7,010.0	-398.1	-1,353.9	-398.1	0.00	0.00	0.00

Planning Report

Database:	EDT_32Bit_ODBC	Local Co-ordinate Reference:	Well AD-DAIRY 2-20-24
Company:	EXTRACTION OIL & GAS	TVD Reference:	KB-EST @ 4655.0usft (Original Well Elev)
Project:	Weld County	MD Reference:	KB-EST @ 4655.0usft (Original Well Elev)
Site:	Sec 21-T5N-R65W	North Reference:	True
Well:	AD-DAIRY 2-20-24	Survey Calculation Method:	Minimum Curvature
Wellbore:	ORIGINAL WELLBORE		
Design:	PROPOSAL #1		

Planned Survey										
Measured Depth (usft)	Inclination (°)	Azimuth (°)	Vertical Depth (usft)	+N/-S (usft)	+E/-W (usft)	Vertical Section (usft)	Dogleg Rate (°/100ft)	Build Rate (°/100ft)	Turn Rate (°/100ft)	
8,000.0	90.00	270.68	7,010.0	-396.9	-1,453.9	-396.9	0.00	0.00	0.00	
8,100.0	90.00	270.68	7,010.0	-395.8	-1,553.9	-395.8	0.00	0.00	0.00	
8,200.0	90.00	270.68	7,010.0	-394.6	-1,653.9	-394.6	0.00	0.00	0.00	
8,300.0	90.00	270.68	7,010.0	-393.4	-1,753.9	-393.4	0.00	0.00	0.00	
8,400.0	90.00	270.68	7,010.0	-392.2	-1,853.8	-392.2	0.00	0.00	0.00	
8,500.0	90.00	270.68	7,010.0	-391.0	-1,953.8	-391.0	0.00	0.00	0.00	
8,600.0	90.00	270.68	7,010.0	-389.9	-2,053.8	-389.9	0.00	0.00	0.00	
8,700.0	90.00	270.68	7,010.0	-388.7	-2,153.8	-388.7	0.00	0.00	0.00	
8,800.0	90.00	270.68	7,010.0	-387.5	-2,253.8	-387.5	0.00	0.00	0.00	
8,900.0	90.00	270.68	7,010.0	-386.3	-2,353.8	-386.3	0.00	0.00	0.00	
9,000.0	90.00	270.68	7,010.0	-385.1	-2,453.8	-385.1	0.00	0.00	0.00	
9,100.0	90.00	270.68	7,010.0	-383.9	-2,553.8	-383.9	0.00	0.00	0.00	
9,200.0	90.00	270.68	7,010.0	-382.8	-2,653.8	-382.8	0.00	0.00	0.00	
9,300.0	90.00	270.68	7,010.0	-381.6	-2,753.8	-381.6	0.00	0.00	0.00	
9,400.0	90.00	270.68	7,010.0	-380.4	-2,853.8	-380.4	0.00	0.00	0.00	
9,500.0	90.00	270.68	7,010.0	-379.2	-2,953.8	-379.2	0.00	0.00	0.00	
9,600.0	90.00	270.68	7,010.0	-378.0	-3,053.8	-378.0	0.00	0.00	0.00	
9,700.0	90.00	270.68	7,010.0	-376.9	-3,153.8	-376.9	0.00	0.00	0.00	
9,800.0	90.00	270.68	7,010.0	-375.7	-3,253.7	-375.7	0.00	0.00	0.00	
9,900.0	90.00	270.68	7,010.0	-374.5	-3,353.7	-374.5	0.00	0.00	0.00	
10,000.0	90.00	270.68	7,010.0	-373.3	-3,453.7	-373.3	0.00	0.00	0.00	
10,100.0	90.00	270.68	7,010.0	-372.1	-3,553.7	-372.1	0.00	0.00	0.00	
10,200.0	90.00	270.68	7,010.0	-370.9	-3,653.7	-370.9	0.00	0.00	0.00	
10,300.0	90.00	270.68	7,010.0	-369.8	-3,753.7	-369.8	0.00	0.00	0.00	
10,400.0	90.00	270.68	7,010.0	-368.6	-3,853.7	-368.6	0.00	0.00	0.00	
10,500.0	90.00	270.68	7,010.0	-367.4	-3,953.7	-367.4	0.00	0.00	0.00	
10,600.0	90.00	270.68	7,010.0	-366.2	-4,053.7	-366.2	0.00	0.00	0.00	
10,700.0	90.00	270.68	7,010.0	-365.0	-4,153.7	-365.0	0.00	0.00	0.00	
10,800.0	90.00	270.68	7,010.0	-363.9	-4,253.7	-363.9	0.00	0.00	0.00	
10,900.0	90.00	270.68	7,010.0	-362.7	-4,353.7	-362.7	0.00	0.00	0.00	
11,000.0	90.00	270.68	7,010.0	-361.5	-4,453.7	-361.5	0.00	0.00	0.00	
11,100.0	90.00	270.68	7,010.0	-360.3	-4,553.7	-360.3	0.00	0.00	0.00	
11,200.0	90.00	270.68	7,010.0	-359.1	-4,653.6	-359.1	0.00	0.00	0.00	
11,300.0	90.00	270.68	7,010.0	-358.0	-4,753.6	-358.0	0.00	0.00	0.00	
11,400.0	90.00	270.68	7,010.0	-356.8	-4,853.6	-356.8	0.00	0.00	0.00	
11,500.0	90.00	270.68	7,010.0	-355.6	-4,953.6	-355.6	0.00	0.00	0.00	
11,600.0	90.00	270.68	7,010.0	-354.4	-5,053.6	-354.4	0.00	0.00	0.00	
11,700.0	90.00	270.68	7,010.0	-353.2	-5,153.6	-353.2	0.00	0.00	0.00	
11,800.0	90.00	270.68	7,010.0	-352.0	-5,253.6	-352.0	0.00	0.00	0.00	
11,900.0	90.00	270.68	7,010.0	-350.9	-5,353.6	-350.9	0.00	0.00	0.00	
12,000.0	90.00	270.68	7,010.0	-349.7	-5,453.6	-349.7	0.00	0.00	0.00	
12,100.0	90.00	270.68	7,010.0	-348.5	-5,553.6	-348.5	0.00	0.00	0.00	
12,200.0	90.00	270.68	7,010.0	-347.3	-5,653.6	-347.3	0.00	0.00	0.00	
12,300.0	90.00	270.68	7,010.0	-346.1	-5,753.6	-346.1	0.00	0.00	0.00	
12,400.0	90.00	270.68	7,010.0	-345.0	-5,853.6	-345.0	0.00	0.00	0.00	
12,500.0	90.00	270.68	7,010.0	-343.8	-5,953.6	-343.8	0.00	0.00	0.00	
12,600.0	90.00	270.68	7,010.0	-342.6	-6,053.5	-342.6	0.00	0.00	0.00	
12,700.0	90.00	270.68	7,010.0	-341.4	-6,153.5	-341.4	0.00	0.00	0.00	
19,696.1	90.00	270.68	7,010.0	-258.8	-13,149.2	-258.8	0.00	0.00	0.00	
TD at 19696.1' MD										

Planning Report

Database:	EDT_32Bit_ODBC	Local Co-ordinate Reference:	Well AD-DAIRY 2-20-24
Company:	EXTRACTION OIL & GAS	TVD Reference:	KB-EST @ 4655.0usft (Original Well Elev)
Project:	Weld County	MD Reference:	KB-EST @ 4655.0usft (Original Well Elev)
Site:	Sec 21-T5N-R65W	North Reference:	True
Well:	AD-DAIRY 2-20-24	Survey Calculation Method:	Minimum Curvature
Wellbore:	ORIGINAL WELLBORE		
Design:	PROPOSAL #1		

Design Targets									
Target Name									
- hit/miss target	Dip Angle	Dip Dir.	TVD	+N/-S	+E/-W	Northing	Easting	Latitude	Longitude
- Shape	(°)	(°)	(usft)	(usft)	(usft)	(usft)	(usft)		
HZ LANDING PNT - AD-	0.00	0.00	7,010.0	-404.3	-827.4	1,382,965.98	3,228,589.97	40° 22' 54.264 N	104° 40' 46.020 W
- plan hits target center									
- Point									
BHL - AD-DAIRY 2-20-2	0.00	0.00	7,010.0	-258.8	-13,149.2	1,382,997.10	3,216,267.39	40° 22' 55.668 N	104° 43' 25.248 W
- plan hits target center									
- Point									

Formations						
Measured Depth	Vertical Depth	Name	Lithology	Dip	Dip Direction	
(usft)	(usft)			(°)	(°)	
3,800.5	3,800.0	PARKMAN				
4,559.0	4,550.0	SUSSEX				
5,075.2	5,060.0	SHANNON				
6,955.0	6,865.0	SHARON SPRINGS				
6,994.3	6,890.0	NIOBRARA				

Plan Annotations					
Measured Depth	Vertical Depth	Local Coordinates			
(usft)	(usft)	+N/-S	+E/-W	Comment	
(usft)	(usft)	(usft)	(usft)		
3,507.0	3,507.0	0.0	0.0	Build 2°/100'	
3,949.4	3,947.7	-27.4	-20.3	Hold 8.85° Inc	
6,525.2	6,492.7	-345.8	-256.0	KOP, Build 10°/100'	
7,373.5	7,010.0	-404.3	-827.4	LP @ 90° Inc, 270.68° Azm Hold	
19,696.1	7,010.0	-258.8	-13,149.2	TD at 19696.1' MD	