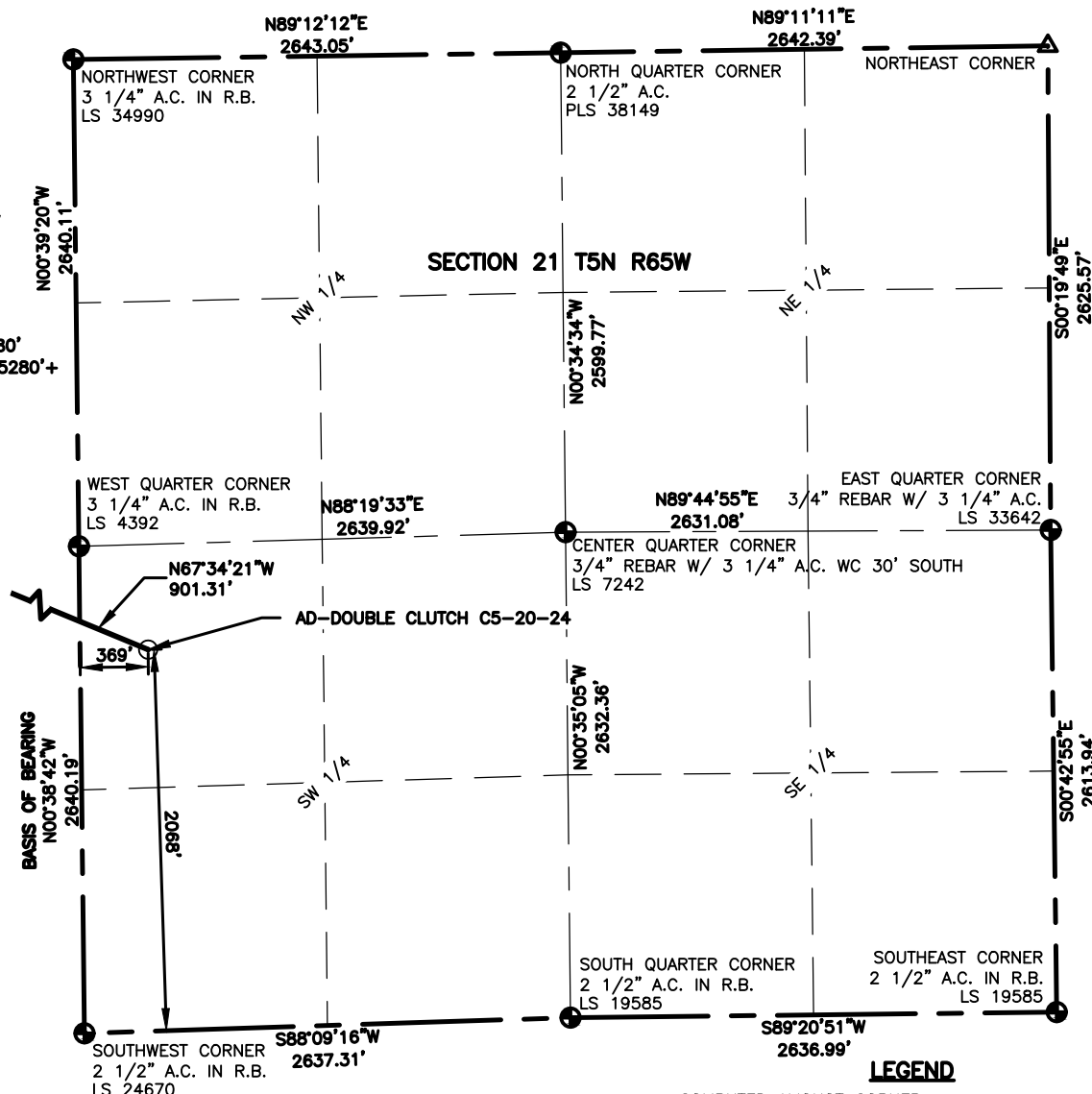


WELL LOCATION DATA:

LATITUDE: 40.38305°N
LONGITUDE: -104.67648°W
ELEVATION: 4639'
PDOP: 2.1
OPERATOR: C.WESTHOLMS
SURFACE USE: COMMERCIAL
PROPOSED GROUND ELEVATION: 4638'

NEAREST CULTURAL ITEMS:

PROPERTY LINE: 339'
BUILDING: 770'
BUILDING UNIT: 769'
HIGH OCCUPANCY BUILDING UNIT: 5280'
DESIGNATED OUTSIDE ACTIVITY AREA: 5280'+
PUBLIC ROAD: 356'
ABOVE GROUND UTILITY: 394'
RAILROAD: 3015'



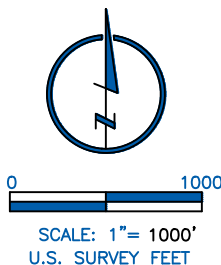
FIRST SUBMITTAL	5/05/16
SECOND SUBMITTAL	01/17/17

LAND SURVEYOR'S CERTIFICATION

LAMP, RYNEARSON & ASSOCIATES, INC., OF FT. COLLINS, COLORADO HAS, IN ACCORDANCE WITH A REQUEST FROM DUSTIN DYK AT EXTRACTION, DETERMINED THE SURFACE LOCATION OF THE WELL DESIGNATED AS AD-DOUBLE CLUTCH C5-20-24 TO BE 2068' FROM THE SOUTH LINE AND 369' FROM THE WEST LINE OF SECTION 21, TOWNSHIP 5 NORTH, RANGE 65 WEST OF THE 6TH P.M., WELD COUNTY, COLORADO.



FRANK A. KOHL
COLORADO PLS 37067
DATE OF SURVEY: 07/20/2015 (SECTION CONTROL)
DATE OF SURVEY: 04/13/2016 (WELL LOCATION)



LEGEND

- △ COMPUTED ALIQUOT CORNER FROM MONUMENT RECORDS
- ⊙ PROPOSED WELL
- ⊙ ALIQUOT CORNER
- A.C. ALUMINUM CAP
- ⊙ BOTTOM HOLE
- R.B. RANGE BOX

NOTES:

- DISTANCES ARE MEASURED PERPENDICULAR TO NEAREST SECTION LINE AND ARE SHOWN ON THE SAME SIDE OF THE SECTION LINE WHERE THE WELL IS LOCATED.
- THIS MAP DOES NOT REPRESENT A MONUMENTED BOUNDARY SURVEY. SIXTEENTH CORNER LOCATIONS ARE COMPUTED, UNLESS OTHERWISE NOTED.
- BOTTOM HOLE LOCATIONS AND HORIZONTAL COMPLETION ZONE PROVIDED BY OTHERS.

BASIS OF BEARING:

THE WEST LINE OF THE SOUTHWEST QUARTER OF SECTION 21-T5N-R65W BEARS N00°38'42"W BETWEEN THE SOUTHWEST CORNER OF SECTION 21 MONUMENTED WITH 2 1/2" A.C. IN R.B. STAMPED "LS 24670" AND THE WEST QUARTER CORNER OF SECTION 21 MONUMENTED WITH 3 1/4" A.C. IN R.B. STAMPED "LS 4392" BASED ON THE COLORADO NORTH 0501 STATE PLANE COORDINATE SYSTEM.

ELEVATIONS ARE BASED ON NAVD 88, AS OBSERVED FROM GPS OBSERVATIONS



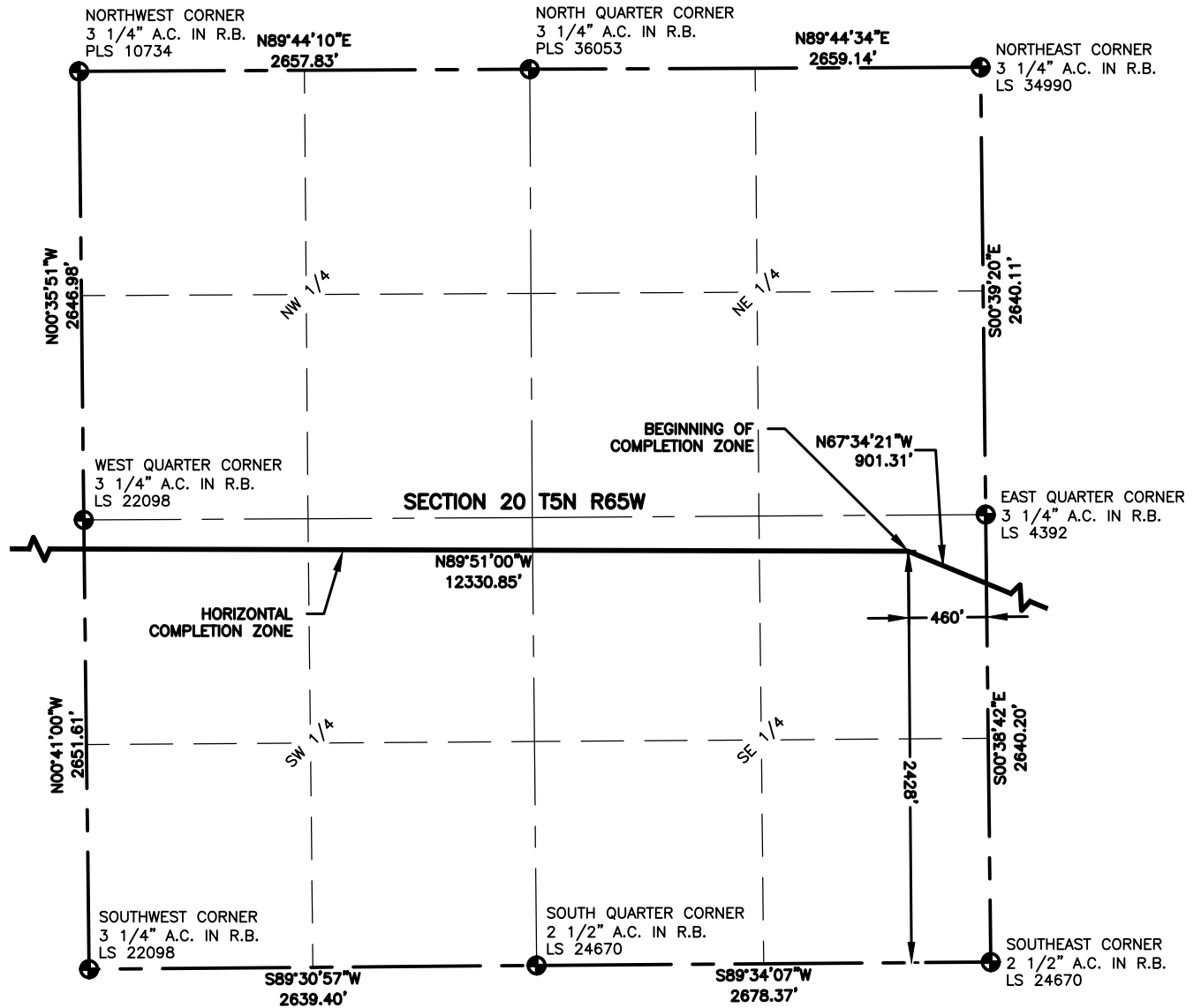
LAMP RYNEARSON
& ASSOCIATES

4715 Innovation Drive 970.226.0342 | P
Fort Collins, CO 80525 970.226.0879 | F
www.LRA-Inc.com

PROPOSED WELL LOCATION EXHIBIT
AD-DOUBLE CLUTCH C5-20-24
1 OF 4

DRAWN BY	DATE	COGCC ID	PROJECT - TASK NUMBER	BOOK AND PAGE
JMC	01/17/17	0216012	21-1\DRAWINGS\EXHIBITS\PRELIMINARY	MRI_04 20-25

SURFACE - LOCATION
NW/4 SW/4 SEC 21 T5N R65W



LEGEND

- ALIQUOT CORNER
- ⊙ PROPOSED WELL
- ⊙ BOTTOM HOLE
- A.C. ALUMINUM CAP
- R.B. RANGE BOX

NOTES:

- DISTANCES ARE MEASURED PERPENDICULAR TO NEAREST SECTION LINE AND ARE SHOWN ON THE SAME SIDE OF THE SECTION LINE WHERE THE WELL IS LOCATED.
- THIS MAP DOES NOT REPRESENT A MONUMENTED BOUNDARY SURVEY. SIXTEENTH CORNER LOCATIONS ARE COMPUTED, UNLESS OTHERWISE NOTED.
- BOTTOM HOLE LOCATIONS AND HORIZONTAL COMPLETION ZONE PROVIDED BY OTHERS.



0 1000
SCALE: 1" = 1000'
U.S. SURVEY FEET



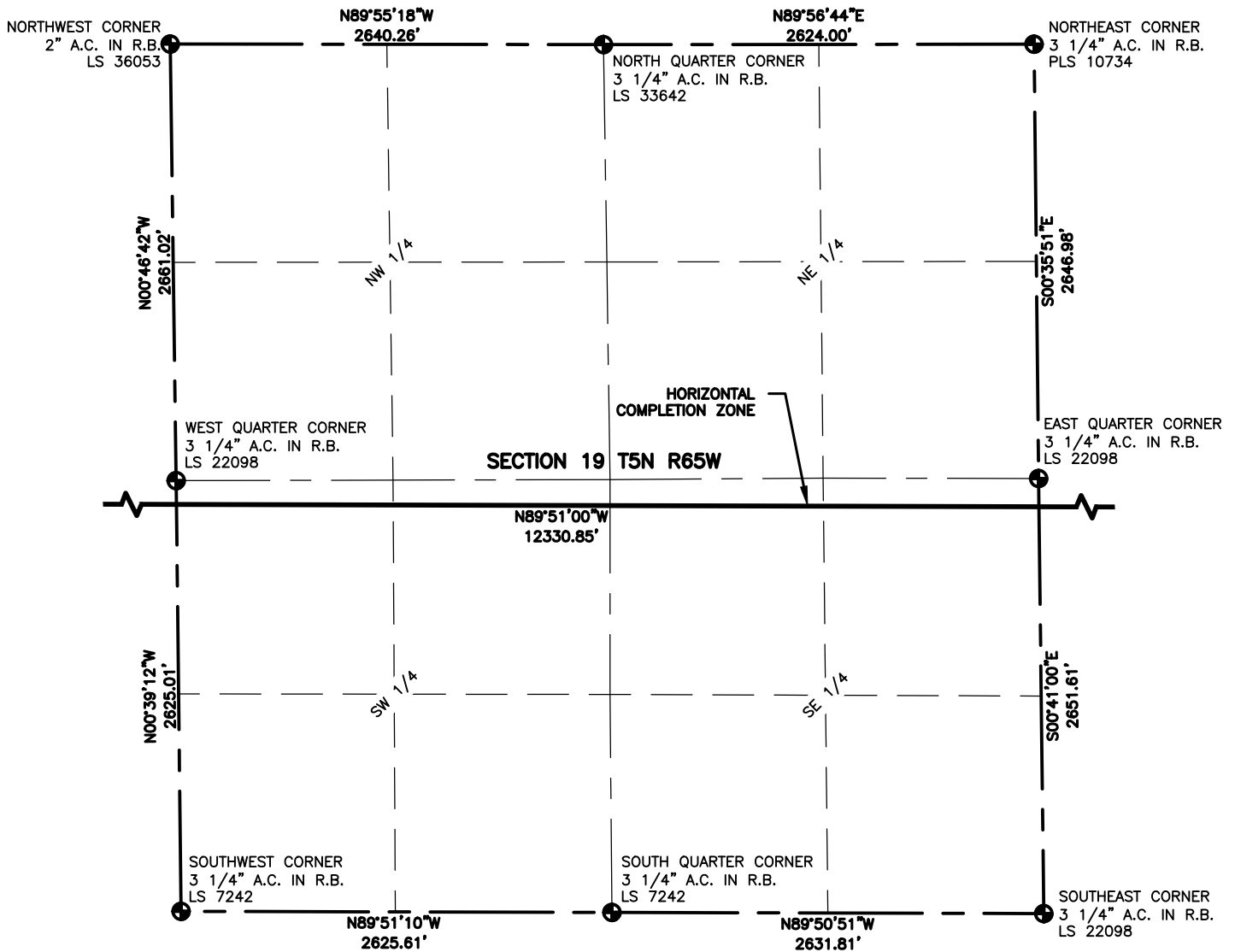
LAMP RYNEARSON
& ASSOCIATES

4715 Innovation Drive 970.226.0342 | P
Fort Collins, CO 80525 970.226.0879 | F
www.LRA-Inc.com

PROPOSED WELL LOCATION EXHIBIT
AD-DOUBLE CLUTCH C5-20-24
2 OF 4

DRAWN BY	DATE	COGCC ID	PROJECT - TASK NUMBER	BOOK AND PAGE
JMC	01/17/17	0216012	21-1\DRAWINGS\EXHIBITS\PRELIMINARY PLAT	MRI_04 20-25

SURFACE - LOCATION
NW/4 SW/4 SEC 21 T5N R65W

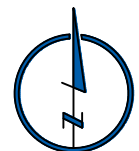


LEGEND

- ALIQUOT CORNER
- ⊙ PROPOSED WELL
- ⊙ BOTTOM HOLE
- A.C. ALUMINUM CAP
- R.B. RANGE BOX

NOTES:

- DISTANCES ARE MEASURED PERPENDICULAR TO NEAREST SECTION LINE AND ARE SHOWN ON THE SAME SIDE OF THE SECTION LINE WHERE THE WELL IS LOCATED.
- THIS MAP DOES NOT REPRESENT A MONUMENTED BOUNDARY SURVEY. SIXTEENTH CORNER LOCATIONS ARE COMPUTED, UNLESS OTHERWISE NOTED.
- BOTTOM HOLE LOCATIONS AND HORIZONTAL COMPLETION ZONE PROVIDED BY OTHERS.



0 1000
SCALE: 1"= 1000'
U.S. SURVEY FEET



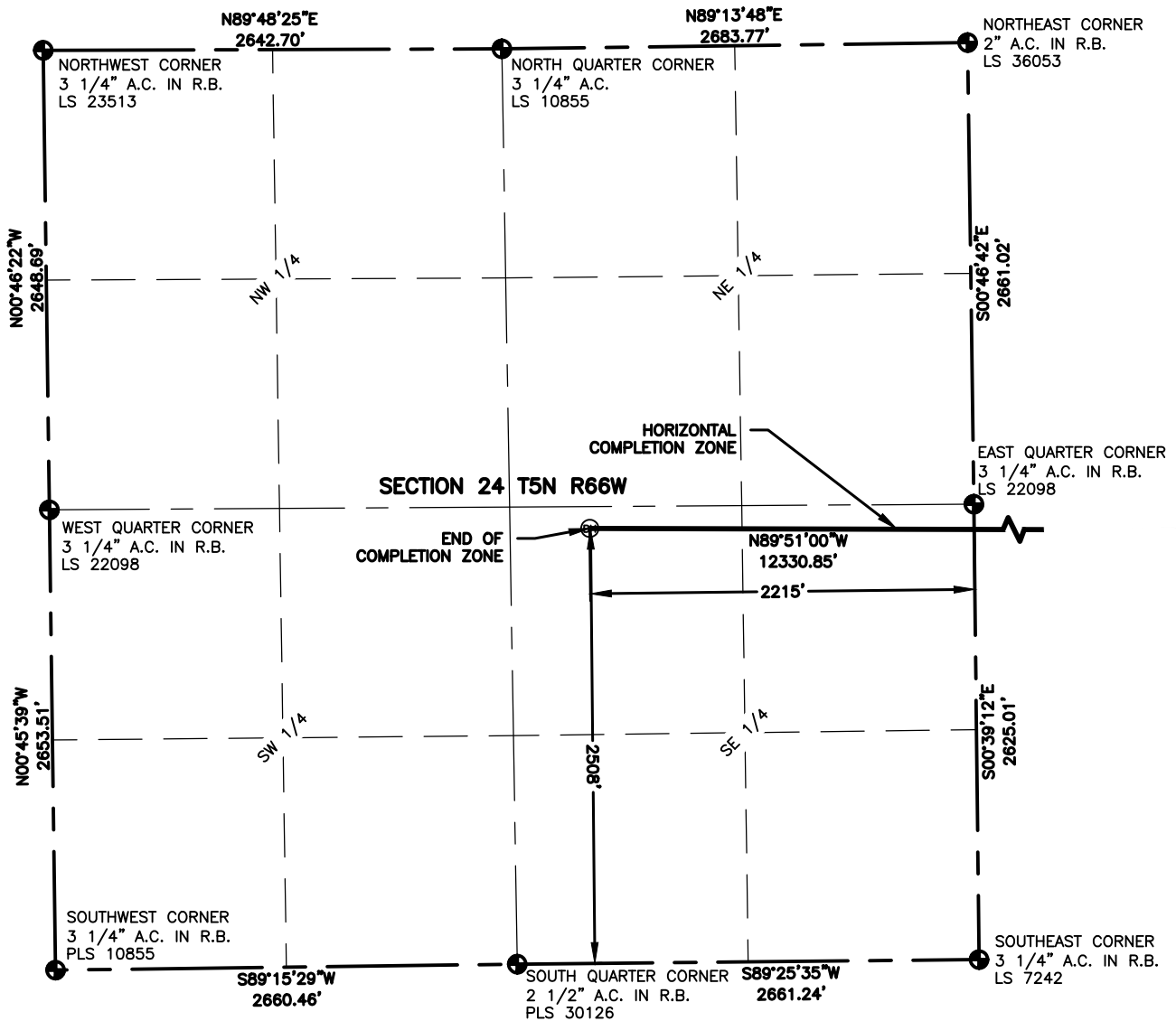
LAMP RYNEARSON
& ASSOCIATES

4715 Innovation Drive 970.226.0342 | P
Fort Collins, CO 80525 970.226.0879 | F
www.LRA-Inc.com

PROPOSED WELL LOCATION EXHIBIT
AD-DOUBLE CLUTCH C5-20-24
3 OF 4

DRAWN BY	DATE	COGCC ID	PROJECT - TASK NUMBER	BOOK AND PAGE
JMC	01/17/17	0216012	21-1\DRAWINGS\EXHIBITS\PRELIMINARY PLAT	MRI_04 20-25

SURFACE - LOCATION
NW/4 SW/4 SEC 21 T5N R65W

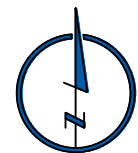


LEGEND

- ALIQUOT CORNER
- ⊙ PROPOSED WELL
- ⊙ BOTTOM HOLE
- A.C. ALUMINUM CAP
- R.B. RANGE BOX

NOTES:

- DISTANCES ARE MEASURED PERPENDICULAR TO NEAREST SECTION LINE AND ARE SHOWN ON THE SAME SIDE OF THE SECTION LINE WHERE THE WELL IS LOCATED.
- THIS MAP DOES NOT REPRESENT A MONUMENTED BOUNDARY SURVEY. SIXTEENTH CORNER LOCATIONS ARE COMPUTED, UNLESS OTHERWISE NOTED.
- BOTTOM HOLE LOCATIONS AND HORIZONTAL COMPLETION ZONE PROVIDED BY OTHERS.



SCALE: 1" = 1000'
U.S. SURVEY FEET



LAMP RYNEARSON
& ASSOCIATES

4715 Innovation Drive 970.226.0342 | P
Fort Collins, CO 80525 970.226.0879 | F
www.LRA-Inc.com

PROPOSED WELL LOCATION EXHIBIT
AD-DOUBLE CLUTCH C5-20-24
4 OF 4

DRAWN BY	DATE	COGCC ID	PROJECT - TASK NUMBER	BOOK AND PAGE
JMC	01/17/17	0216012	21-1\DRAWINGS\EXHIBITS\PRELIMINARY PLAT	MRI_04 20-25

SURFACE - LOCATION
NW/4 SW/4 SEC 21 T5N R65W