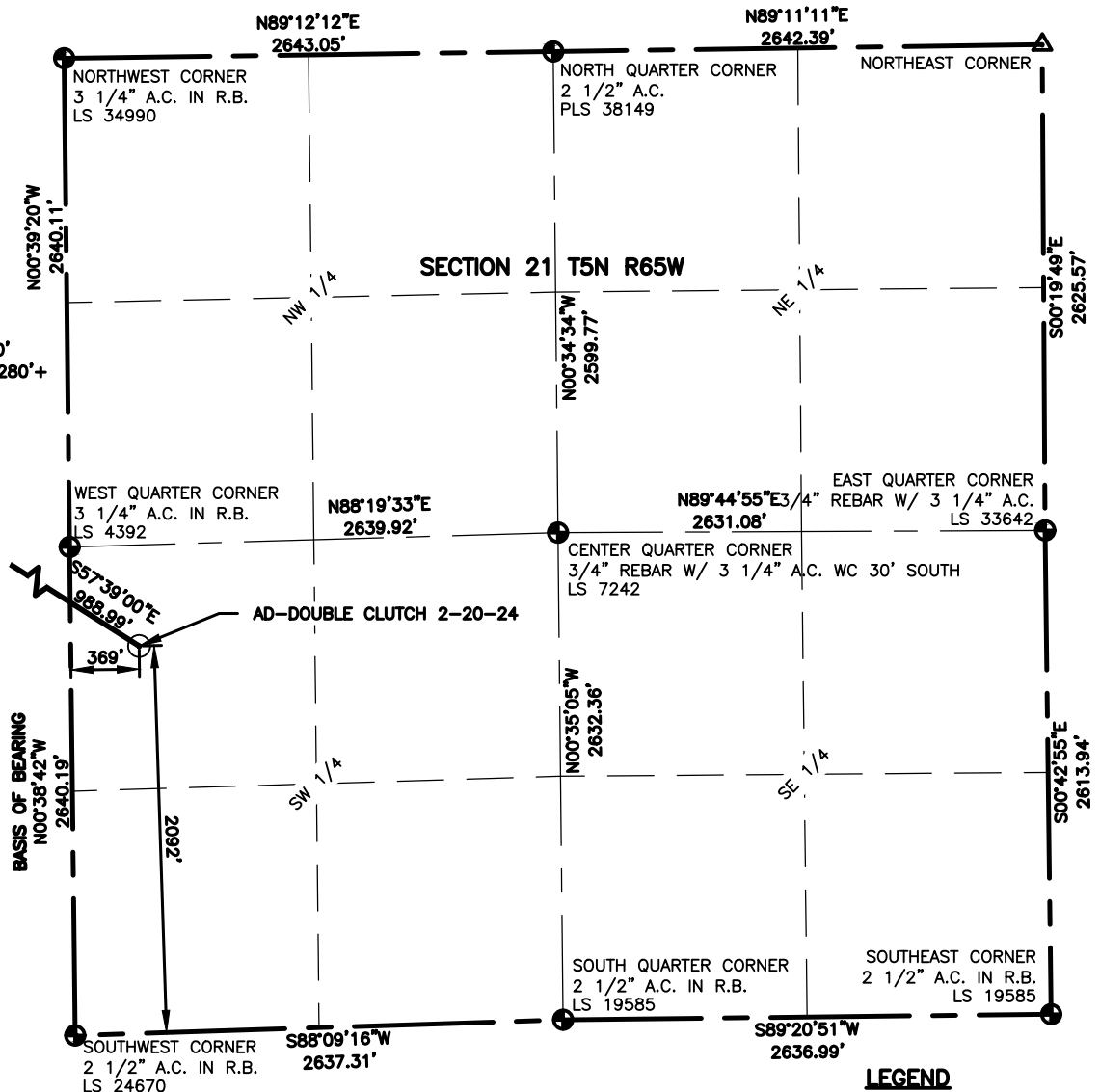


### WELL LOCATION DATA:

LATITUDE: 40.38312°N  
LONGITUDE: -104.67648°W  
ELEVATION: 4639'  
PDOP: 2.1  
OPERATOR: C.WESTHOLMS  
SURFACE USE: COMMERCIAL  
PROPOSED GROUND ELEVATION: 4638'

### NEAREST CULTURAL ITEMS:

PROPERTY LINE: 339'  
BUILDING: 794'  
BUILDING UNIT: 788'  
HIGH OCCUPANCY BUILDING UNIT: 5280'  
DESIGNATED OUTSIDE ACTIVITY AREA: 5280'+  
PUBLIC ROAD: 356'  
ABOVE GROUND UTILITY: 395'  
RAILROAD: 3006'



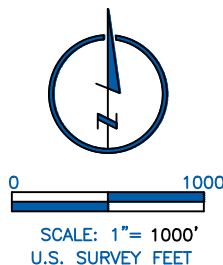
FIRST SUBMITTAL	5/05/16
SECOND SUBMITTAL	01/17/17

### LAND SURVEYOR'S CERTIFICATION

LAMP, RYNEARSON & ASSOCIATES, INC., OF FT. COLLINS, COLORADO HAS, IN ACCORDANCE WITH A REQUEST FROM DUSTIN DYK AT EXTRACTION, DETERMINED THE SURFACE LOCATION OF THE WELL DESIGNATED AS AD-DOUBLE CLUTCH 2-20-24 TO BE 2092' FROM THE SOUTH LINE AND 369' FROM THE WEST LINE OF SECTION 21, TOWNSHIP 5 NORTH, RANGE 65 WEST OF THE 6TH P.M., WELD COUNTY, COLORADO.



FRANK A. KOHL  
COLORADO PLS 37067  
DATE OF SURVEY: 07/20/2015 (SECTION CONTROL)  
DATE OF SURVEY: 04/13/2016 (WELL LOCATION)



- LEGEND**
- △ COMPUTED ALIQUOT CORNER FROM MONUMENT RECORDS
  - ⊙ PROPOSED WELL
  - ⊕ ALIQUOT CORNER
  - A.C. ALUMINUM CAP
  - ⊖ BOTTOM HOLE
  - R.B. RANGE BOX

### NOTES:

- DISTANCES ARE MEASURED PERPENDICULAR TO NEAREST SECTION LINE AND ARE SHOWN ON THE SAME SIDE OF THE SECTION LINE WHERE THE WELL IS LOCATED.
- THIS MAP DOES NOT REPRESENT A MONUMENTED BOUNDARY SURVEY. SIXTEENTH CORNER LOCATIONS ARE COMPUTED, UNLESS OTHERWISE NOTED.
- BOTTOM HOLE LOCATIONS AND HORIZONTAL COMPLETION ZONE PROVIDED BY OTHERS.

### BASIS OF BEARING:

THE WEST LINE OF THE SOUTHWEST QUARTER OF SECTION 21-T5N-R65W BEARS N00°38'42"W BETWEEN THE SOUTHWEST CORNER OF SECTION 21 MONUMENTED WITH 2 1/2" A.C. IN R.B. STAMPED "LS 24670" AND THE WEST QUARTER CORNER OF SECTION 21 MONUMENTED WITH 3 1/4" A.C. IN R.B. STAMPED "LS 4392" BASED ON THE COLORADO NORTH 0501 STATE PLANE COORDINATE SYSTEM.

ELEVATIONS ARE BASED ON NAVD 88, AS OBSERVED FROM GPS OBSERVATIONS



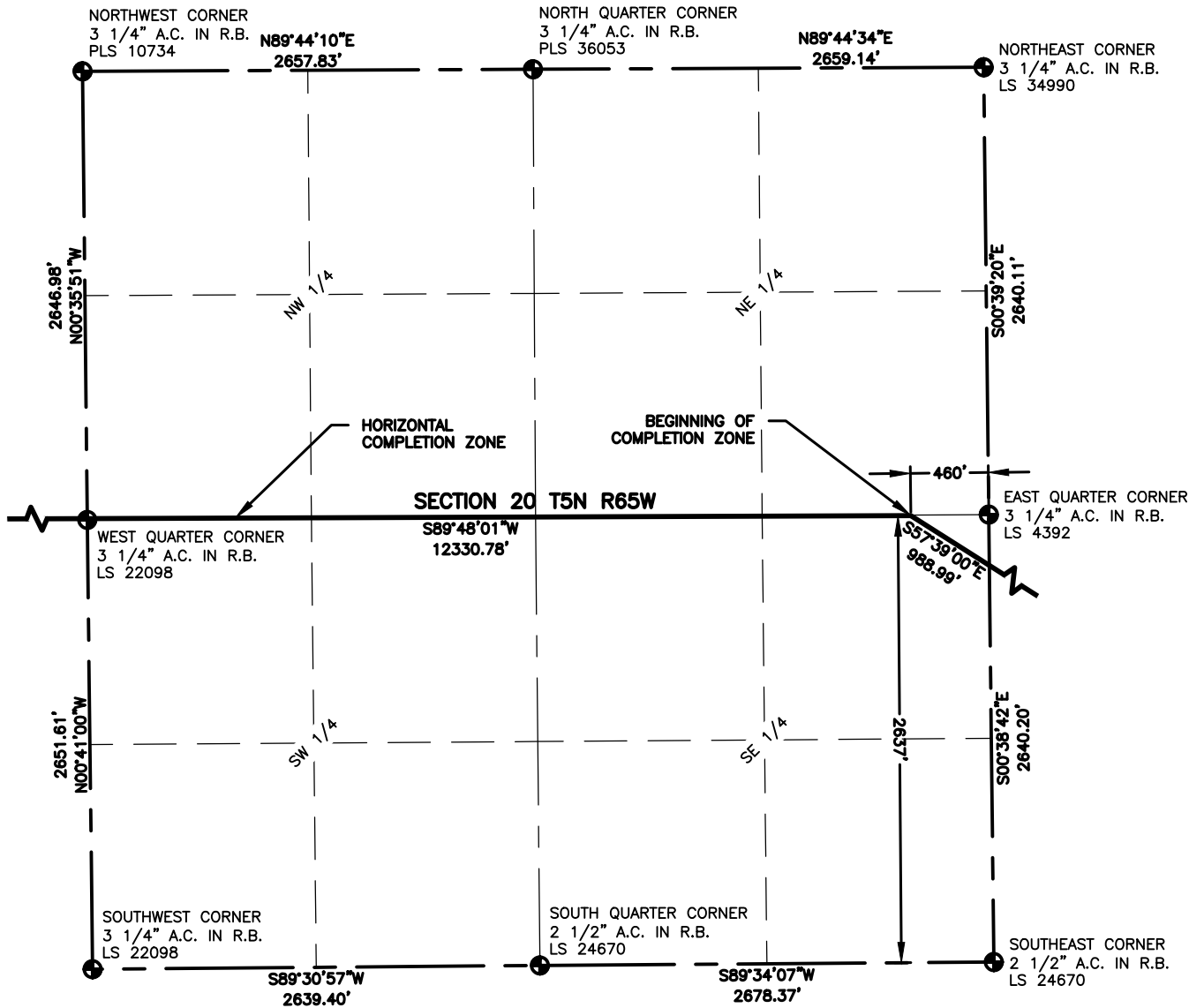
**LAMP RYNEARSON**  
& ASSOCIATES

4715 Innovation Drive 970.226.0342 | P  
Fort Collins, CO 80525 970.226.0879 | F  
www.LRA-Inc.com

PROPOSED WELL LOCATION EXHIBIT  
AD-DOUBLE CLUTCH 2-20-24  
1 OF 4

DRAWN BY	DATE	COGCC ID	PROJECT - TASK NUMBER	BOOK AND PAGE
JMC	01/17/17	0216012	21-1\DRAWINGS\EXHIBITS\PRELIMINARY	MRI_04 20-25

**SURFACE - LOCATION**  
NW/4 SW/4 SEC 21 T5N R65W



### LEGEND

- ALIQUOT CORNER
- ⊙ PROPOSED WELL
- ⊙ BOTTOM HOLE
- A.C. ALUMINUM CAP
- R.B. RANGE BOX

### NOTES:

- DISTANCES ARE MEASURED PERPENDICULAR TO NEAREST SECTION LINE AND ARE SHOWN ON THE SAME SIDE OF THE SECTION LINE WHERE THE WELL IS LOCATED.
- THIS MAP DOES NOT REPRESENT A MONUMENTED BOUNDARY SURVEY. SIXTEENTH CORNER LOCATIONS ARE COMPUTED, UNLESS OTHERWISE NOTED.
- BOTTOM HOLE LOCATIONS AND HORIZONTAL COMPLETION ZONE PROVIDED BY OTHERS.



0 1000  
SCALE: 1" = 1000'  
U.S. SURVEY FEET



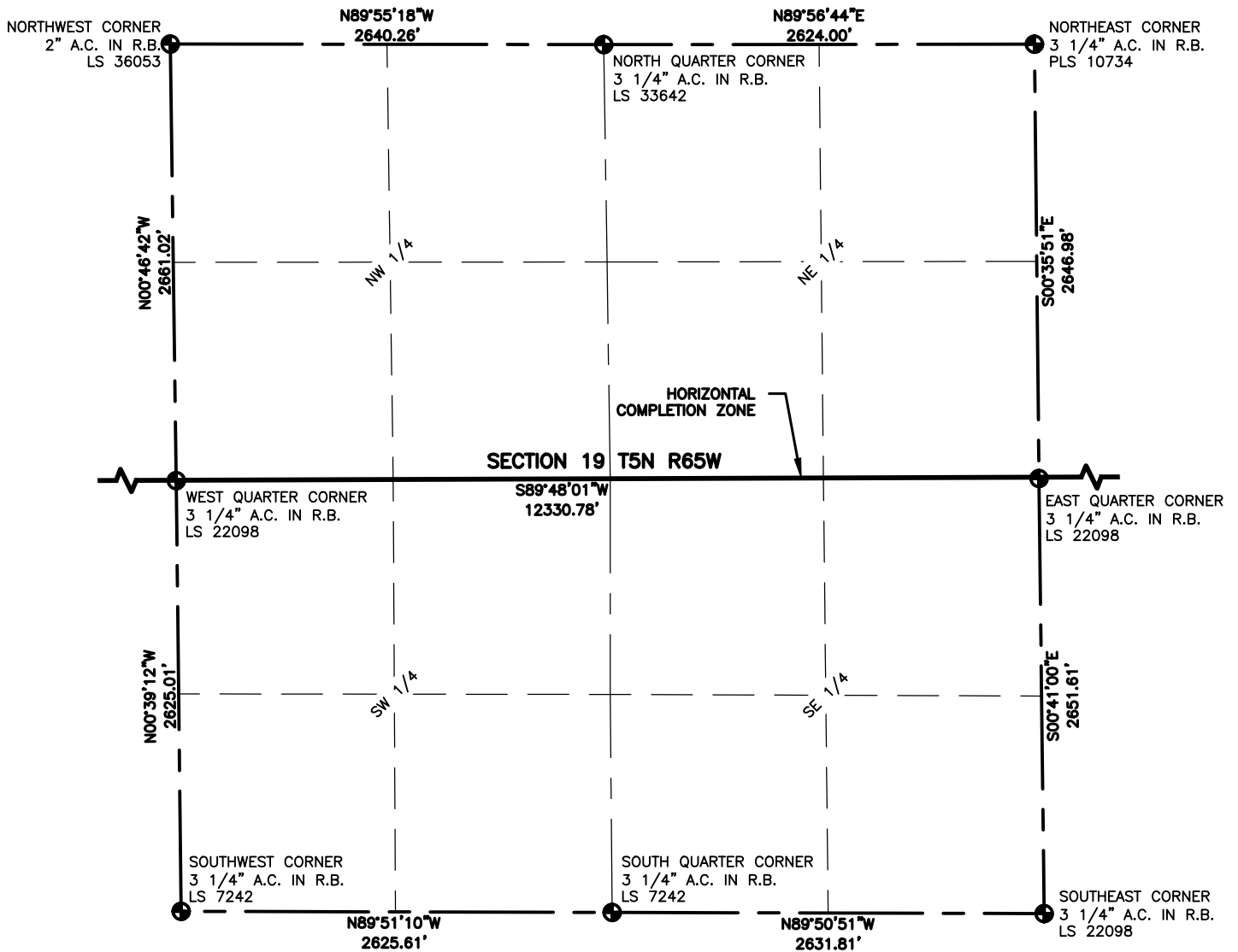
**LAMP RYNEARSON**  
& ASSOCIATES

4715 Innovation Drive 970.226.0342 | P  
Fort Collins, CO 80525 970.226.0879 | F  
www.LRA-Inc.com

PROPOSED WELL LOCATION EXHIBIT  
AD-DOUBLE CLUTCH 2-20-24  
2 OF 4

DRAWN BY	DATE	COGCC ID	PROJECT - TASK NUMBER	BOOK AND PAGE
JMC	01/17/17	0216012	21-I\DRAWINGS\EXHIBITS\PRELIMINARY PLAT	MRI_04 20-25

**SURFACE - LOCATION**  
NW/4 SW/4 SEC 21 T5N R65W

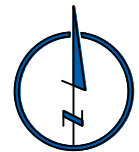


### LEGEND

- ALIQUOT CORNER
- ⊙ PROPOSED WELL
- ⊙ BOTTOM HOLE
- A.C. ALUMINUM CAP
- R.B. RANGE BOX

### NOTES:

- DISTANCES ARE MEASURED PERPENDICULAR TO NEAREST SECTION LINE AND ARE SHOWN ON THE SAME SIDE OF THE SECTION LINE WHERE THE WELL IS LOCATED.
- THIS MAP DOES NOT REPRESENT A MONUMENTED BOUNDARY SURVEY. SIXTEENTH CORNER LOCATIONS ARE COMPUTED, UNLESS OTHERWISE NOTED.
- BOTTOM HOLE LOCATIONS AND HORIZONTAL COMPLETION ZONE PROVIDED BY OTHERS.



0 1000  
SCALE: 1"= 1000'  
U.S. SURVEY FEET



**LAMP RYNEARSON**  
& ASSOCIATES

4715 Innovation Drive 970.226.0342 | P  
Fort Collins, CO 80525 970.226.0879 | F  
www.LRA-Inc.com

PROPOSED WELL LOCATION EXHIBIT  
AD-DOUBLE CLUTCH 2-20-24  
3 OF 4

**DRAWN BY**  
JMC  
PATH\FILENAME

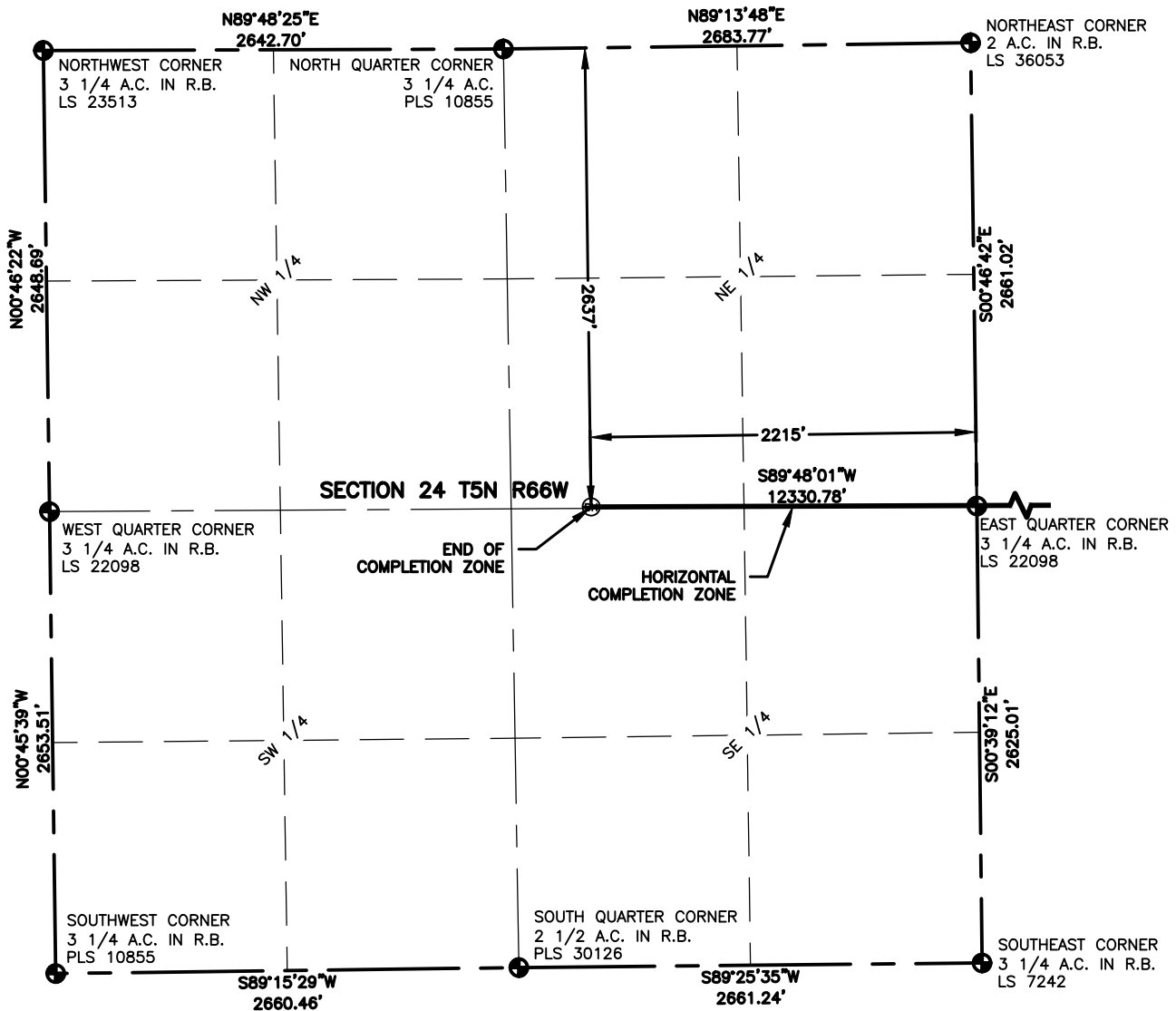
**DATE**  
01/17/17  
P:\\_Engineering\0216012 Andrey 21-I\DRAWINGS\EXHIBITS\PRELIMINARY PLAT

**COGCC ID**  
0216012

**PROJECT - TASK NUMBER**  
21-I\DRAWINGS\EXHIBITS\PRELIMINARY PLAT

**BOOK AND PAGE**  
MRI\_04 20-25

**SURFACE - LOCATION**  
NW/4 SW/4 SEC 21 T5N R65W



### LEGEND

- ALIQUOT CORNER
- ⊙ PROPOSED WELL
- ⊙ BOTTOM HOLE
- A.C. ALUMINUM CAP
- R.B. RANGE BOX

### NOTES:

- DISTANCES ARE MEASURED PERPENDICULAR TO NEAREST SECTION LINE AND ARE SHOWN ON THE SAME SIDE OF THE SECTION LINE WHERE THE WELL IS LOCATED.
- THIS MAP DOES NOT REPRESENT A MONUMENTED BOUNDARY SURVEY. SIXTEENTH CORNER LOCATIONS ARE COMPUTED, UNLESS OTHERWISE NOTED.
- BOTTOM HOLE LOCATIONS AND HORIZONTAL COMPLETION ZONE PROVIDED BY OTHERS.



0 1000

SCALE: 1" = 1000'  
U.S. SURVEY FEET



**LAMP RYNEARSON**  
& ASSOCIATES

4715 Innovation Drive 970.226.0342 | P  
Fort Collins, CO 80525 970.226.0879 | F  
www.LRA-Inc.com

PROPOSED WELL LOCATION EXHIBIT  
AD-DOUBLE CLUTCH 2-20-24  
4 OF 4

DRAWN BY  
JMC  
PATH\FILENAME

DATE  
01/17/17

COGCC ID  
0216012

PROJECT - TASK NUMBER  
21-1\DRAWINGS\EXHIBITS\PRELIMINARY PLAT

BOOK AND PAGE  
MRI 04 20-25

SURFACE - LOCATION  
NW/4 SW/4 SEC 21 T5N R65W