



---

January 30, 2017

Mr. Matthew Lepore, Director  
Colorado Oil & Gas Conservation Commission  
1120 Lincoln Street, Ste. 801  
Denver, Colorado 80203

RE: Rule 318.A.e.  
AD-Double Clutch 1-20-24  
AD-Double Clutch C5-20-24  
AD-Double Clutch 2-20-24  
AD-Double Clutch 3-20-24

Surface Location: NWSW, Section 21, Township 5N, Range 65W, Weld County, Colorado

Dear Mr. Lepore,

Extraction Oil and Gas is planning to drill the captioned horizontal wells in accordance with the provision of COGCC Rule 318A.e.

The proposed wellbore spacing unit consists of:

Section 24-5N-66W: S/2NE/4 & N/2SE/4  
Section 19-5N-65W: S/2N/2 & N/2S/2  
Section 20-5N-65W: S/2N/2 & N/2S/2

The spacing unit is an 800-acre wellbore spacing unit for the Niobrara and Codell formations.

Extraction Oil and Gas hereby certifies to the Director that all Owners within the proposed spacing unit above were notified and 30 days have passed. Extraction received an objection from PDC Energy Inc. on 7/13/16, but the objection was withdrawn on 1/30/17.

If you have any questions or issues regarding this permit, please contact Alyssa Andrews at (720) 481-2379.

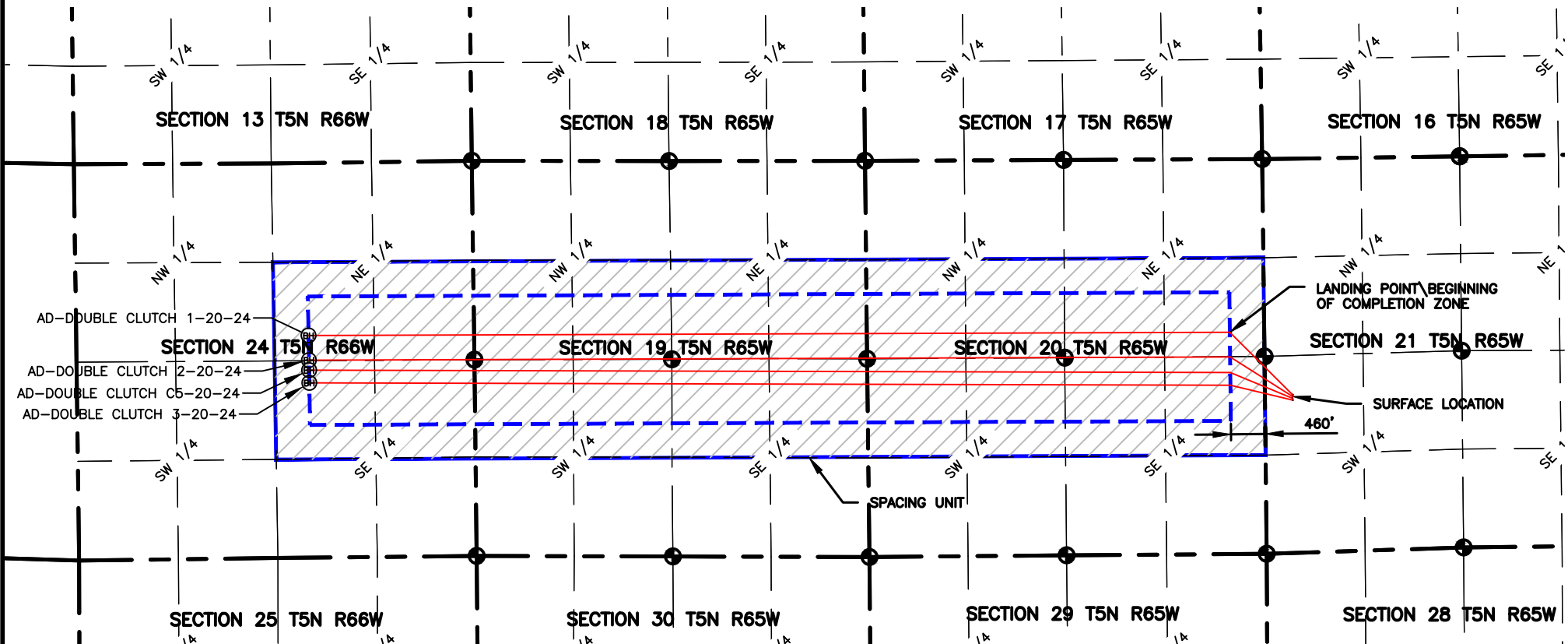
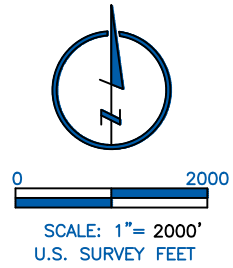
Sincerely,

Alyssa Andrews  
Regulatory Analyst  
Extraction Oil & Gas, LLC

NAME: DOUBLE CLUTCH

SPACING UNIT: S/2 NE/4 & N/2 SE/4 SEC 24 T5N R66W, S/2 N/2 & N/2 S/2 SEC 19, S/2 N/2 & N/2 S/2 SEC 20, T5N, 65W UNIT ACREAGE: 800

WELL NAME	SURFACE LOCATION				LANDING POINT\BEGIN HORIZONTAL COMPLETION ZONE				BOTTOM HOLE\END HORIZONTAL COMPLETION ZONE				COMPLETION ZONE BEARING	COMPLETION ZONE LENGTH
	DIST.	DIR.	DIST.	DIR.	DIST.	DIR.	DIST.	DIR.	DIST.	DIR.	DIST.	DIR.		
AD-DOUBLE CLUTCH 1-20-24	2116'	FSL	370'	FWL	2314'	FNL	460'	FEL	2307'	FNL	2216'	FEL	S89°48'02"W	12332.51
AD-DOUBLE CLUTCH 2-20-24	2092'	FSL	369'	FWL	2637'	FSL	460'	FEL	2637'	FNL	2215'	FEL	S89°48'01"W	12330.78
AD-DOUBLE CLUTCH C5-20-24	2068'	FSL	369'	FWL	2428'	FSL	460'	FEL	2508'	FSL	2215'	FEL	N89°51'00"W	12330.85
AD-DOUBLE CLUTCH 3-20-24	2044'	FSL	369'	FWL	2258'	FSL	460'	FEL	2338'	FSL	2214'	FEL	N89°51'00W	12329.91



**LAMP RYNEARSON**  
& ASSOCIATES

4715 Innovation Drive 970.226.0342 | P  
Fort Collins, CO 80525 970.226.0879 | F  
www.LRA-Inc.com

PROPOSED SPACING UNIT EXHIBIT  
ARDREY 21-1  
DOUBLE CLUTCH

**LEGEND**

- ⊕ ALIQUOT CORNER
- ⊙ BOTTOM HOLE
- △ COMPUTED ALIQUOT CORNER FROM MONUMENT ACCESSORIES
- ⊞ COMPUTED FROM GLO RECORDS
- SECTION LINE
- - - SIXTEENTH LINE
- · - QUARTER SECTION LINE

<b>DRAWN BY</b> JMC	<b>DATE</b> 01/17/17	<b>COGCC ID</b>	<b>PROJECT - TASK NUMBER</b> 0216012	<b>BOOK AND PAGE</b> MRI 04 20-25
<b>PATH\FILENAME</b> P:\_Engineering\0216012 Ardrey 21-1\DRAWINGS\EXHIBITS\0216012-PSU-DOUBLE CLUTCH.dwg				

**SURFACE - LOCATION**  
NW/4 SW/4 SEC 21 T5N R65W