

# **EXTRACTION OIL & GAS**

**Weld County**

**Sec 21-T5N-R65W**

**AD-J EVANS C3-20-24**

**ORIGINAL WELLBORE**

**Plan: PROPOSAL #1**

## **Standard Planning Report**

**09 February, 2017**



Project: Weld County  
Site: Sec 21-T5N-R65W  
Well: AD-J EVANS C3-20-24  
Wellbore: ORIGINAL WELLBORE  
Design: PROPOSAL #1



Azimuths to True North  
Magnetic North: 8.28°  
Magnetic Field  
Strength: 52516.6nT  
Dip Angle: 66.88°  
Date: 5/22/2016  
Model: IGRF2015

#### WELL DETAILS: AD-J EVANS C3-20-24

+N/-S	+E/-W	Northing	Ground Level:	4638.0	Latitude	Longitude	Slot
0.0	0.0	1383596.59	Easting	3229414.33	40° 23' 0.420 N	104° 40' 35.292 W	

#### SECTION DETAILS

Sec	MD	Inc	Azi	TVD	+N/-S	+E/-W	Dleg	TFace	VSec	Target
1	0.0	0.00	0.00	0.0	0.0	0.0	0.00	0.00	0.0	
2	200.0	0.00	0.00	200.0	0.0	0.0	0.00	0.00	0.0	
3	865.5	13.31	349.54	859.6	75.7	-14.0	2.00	349.54	23.2	
4	6852.9	13.31	349.54	6686.1	1431.3	-264.1	0.00	0.00	439.3	
5	7728.1	90.00	270.39	7220.0	1559.2	-835.7	10.00	-79.44	1022.3	HZ LANDING PNT -
6	20060.2	90.00	270.39	7220.0	1642.8	-13167.5	0.00	0.00	13269.6	BHL - AD-J EVANS

#### ANNOTATIONS

MD	Inc	Azi	TVD	+N/-S	+E/-W	VSec	Departure	Annotation
200.0	0.00	0.00	200.0	0.0	0.0	0.0	0.0	Build 2°/100'
865.5	13.31	349.54	859.6	75.7	-14.0	75.7	77.0	Hold 13.31° Inc
6852.9	13.31	349.54	6686.1	1431.3	-264.1	1431.3	1455.4	KOP, Build 10°/100'
7728.1	90.00	270.39	7220.0	1559.2	-835.7	1559.2	2058.3	LP @ 90° Inc, 270.39° Azm Hold
20060.2	90.00	270.39	7220.0	1642.8	-13167.5	1642.8	14390.4	TD at 20060.2' MD

#### DESIGN TARGET DETAILS

Name	TVD	+N/-S	+E/-W	Northing	Easting	Latitude	Longitude	Shape
BHL - AD-J EVANS C3-20-24	7220.0	1642.8	-13167.5	1385117.07	3216232.12	40° 23' 16.620 N	104° 43' 25.464 W	Point
HZ LANDING PNT - AD-J EVANS C3-20-24	7220.0	1559.2	-835.7	1385147.96	3228564.20	40° 23' 15.828 N	104° 40' 46.092 W	Point

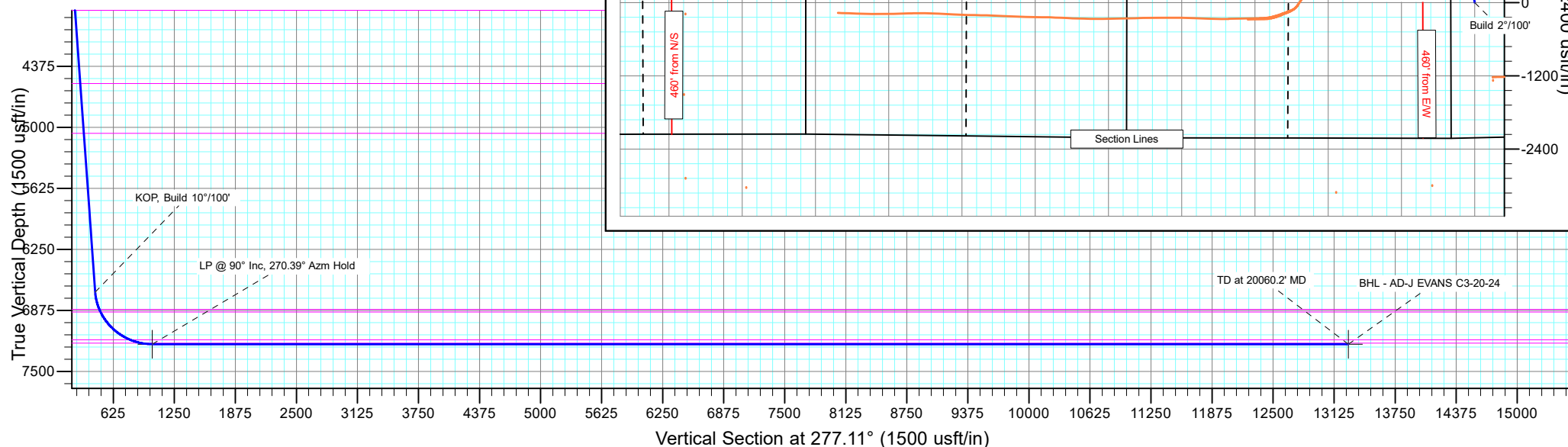
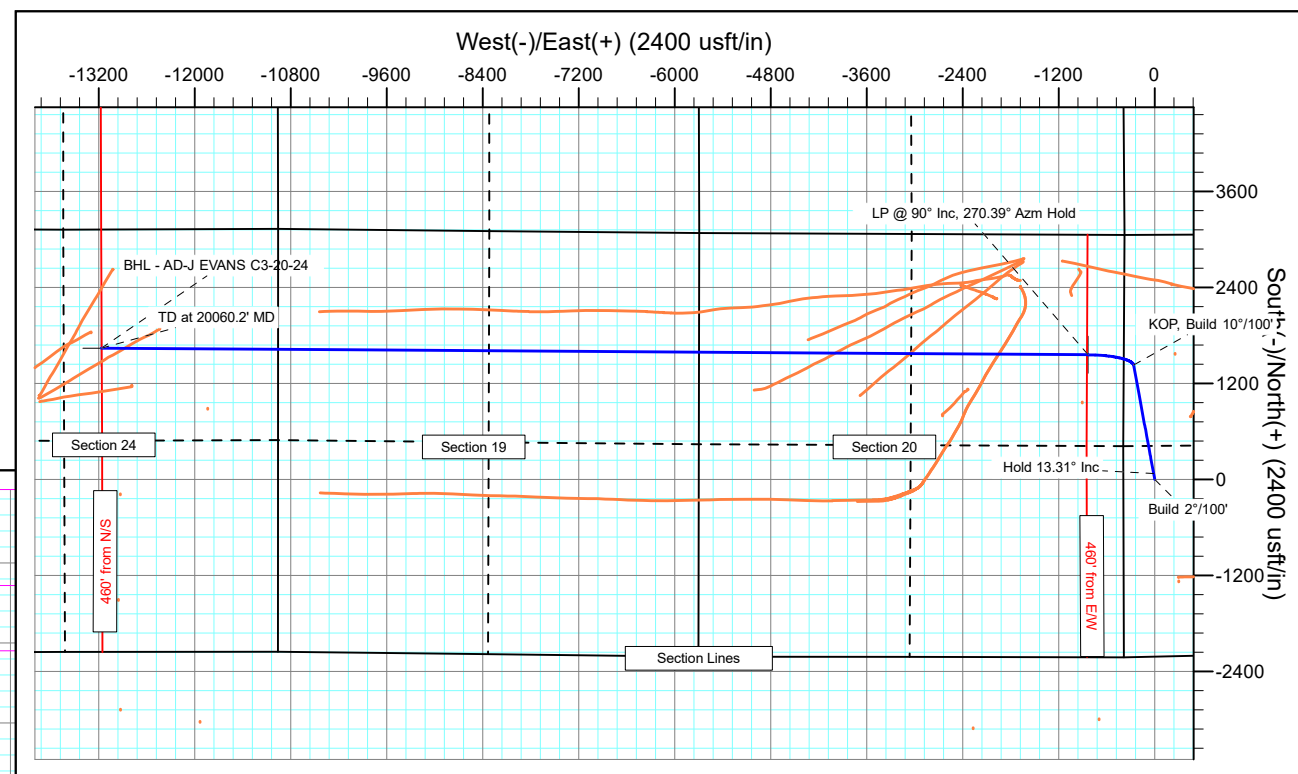
#### FORMATION TOP DETAILS

TVDPath	MDPath	Formation
3800.0	3887.1	PARKMAN
4550.0	4657.8	SUSSEX
5060.0	5181.9	SHANNON
6865.0	7041.5	SHARON SPRINGS
6890.0	7069.3	NIOBRARA
7175.0	7496.4	FORT HAYS
7210.0	7619.4	CODELL

#### PROJECT DETAILS: Weld County

Geodetic System: US State Plane 1983  
Datum: North American Datum 1983  
Ellipsoid: GRS 1980  
Zone: Colorado Northern Zone  
System Datum: Mean Sea Level

SHL:  
371' FWL, 2212' FSL  
Sec 21-T5N-R65W  
LP:  
1502' FNL, 460' FEL  
Sec 20-T5N-R65W  
BHL:  
1482' FNL, 2219' FEL  
Sec 24-T5N-R66W



## Planning Report

<b>Database:</b>	EDT_32Bit_ODBC	<b>Local Co-ordinate Reference:</b>	Well AD-J EVANS C3-20-24
<b>Company:</b>	EXTRACTION OIL & GAS	<b>TVD Reference:</b>	KB-EST @ 4654.0usft (Original Well Elev)
<b>Project:</b>	Weld County	<b>MD Reference:</b>	KB-EST @ 4654.0usft (Original Well Elev)
<b>Site:</b>	Sec 21-T5N-R65W	<b>North Reference:</b>	True
<b>Well:</b>	AD-J EVANS C3-20-24	<b>Survey Calculation Method:</b>	Minimum Curvature
<b>Wellbore:</b>	ORIGINAL WELLBORE		
<b>Design:</b>	PROPOSAL #1		

Project	Weld County		
Map System:	US State Plane 1983	System Datum:	Mean Sea Level
Geo Datum:	North American Datum 1983		
Map Zone:	Colorado Northern Zone		

Site	Sec 21-T5N-R65W				
Site Position:		Northing:	1,383,619.20 usft	Latitude:	40° 23' 0.636 N
From:	Lat/Long	Easting:	3,229,494.91 usft	Longitude:	104° 40' 34.248 W
Position Uncertainty:	0.0 usft	Slot Radius:	13.200 in	Grid Convergence:	0.53

Well	AD-J EVANS C3-20-24					
Well Position	+N/-S	-21.9 usft	Northing:	1,383,596.59 usft	Latitude:	40° 23' 0.420 N
	+E/-W	-80.8 usft	Easting:	3,229,414.33 usft	Longitude:	104° 40' 35.292 W
Position Uncertainty		0.0 usft	Wellhead Elevation:		Ground Level:	4,638.0 usft

Wellbore	ORIGINAL WELLBORE				
Magnetics	Model Name	Sample Date	Declination (°)	Dip Angle (°)	Field Strength (nT)
	IGRF2015	5/22/2016	8.28	66.88	52,516.59330804

Design	PROPOSAL #1			
Audit Notes:				
Version:	Phase:	PROTOTYPE	Tie On Depth:	0.0
Vertical Section:	Depth From (TVD) (usft)	+N/-S (usft)	+E/-W (usft)	Direction (°)
	0.0	0.0	0.0	0.00

Plan Survey Tool Program			Date	2/9/2017	
Depth From (usft)	Depth To (usft)	Survey (Wellbore)	Tool Name	Remarks	
1	0.0	20,060.2	PROPOSAL #1 (ORIGINAL WEL	MWD	
				OWSG MWD - Standard	

Plan Sections										
Measured Depth (usft)	Inclination (°)	Azimuth (°)	Vertical Depth (usft)	+N/-S (usft)	+E/-W (usft)	Dogleg Rate (°/100ft)	Build Rate (°/100ft)	Turn Rate (°/100ft)	TFO (°)	Target
0.0	0.00	0.00	0.0	0.0	0.0	0.00	0.00	0.00	0.00	
200.0	0.00	0.00	200.0	0.0	0.0	0.00	0.00	0.00	0.00	
865.5	13.31	349.54	859.6	75.7	-14.0	2.00	2.00	0.00	349.54	
6,852.9	13.31	349.54	6,686.1	1,431.3	-264.1	0.00	0.00	0.00	0.00	
7,728.1	90.00	270.39	7,220.0	1,559.2	-835.7	10.00	8.76	-9.04	-79.44	HZ LANDING PNT - /
20,060.2	90.00	270.39	7,220.0	1,642.8	-13,167.5	0.00	0.00	0.00	0.00	BHL - AD-J EVANS C

# Planning Report

<b>Database:</b>	EDT_32Bit_ODBC	<b>Local Co-ordinate Reference:</b>	Well AD-J EVANS C3-20-24
<b>Company:</b>	EXTRACTION OIL & GAS	<b>TVD Reference:</b>	KB-EST @ 4654.0usft (Original Well Elev)
<b>Project:</b>	Weld County	<b>MD Reference:</b>	KB-EST @ 4654.0usft (Original Well Elev)
<b>Site:</b>	Sec 21-T5N-R65W	<b>North Reference:</b>	True
<b>Well:</b>	AD-J EVANS C3-20-24	<b>Survey Calculation Method:</b>	Minimum Curvature
<b>Wellbore:</b>	ORIGINAL WELLBORE		
<b>Design:</b>	PROPOSAL #1		

Planned Survey									
Measured Depth (usft)	Inclination (°)	Azimuth (°)	Vertical Depth (usft)	+N/-S (usft)	+E/-W (usft)	Vertical Section (usft)	Dogleg Rate (°/100ft)	Build Rate (°/100ft)	Turn Rate (°/100ft)
0.0	0.00	0.00	0.0	0.0	0.0	0.0	0.00	0.00	0.00
100.0	0.00	0.00	100.0	0.0	0.0	0.0	0.00	0.00	0.00
200.0	0.00	0.00	200.0	0.0	0.0	0.0	0.00	0.00	0.00
Build 2°/100'									
300.0	2.00	349.54	300.0	1.7	-0.3	1.7	2.00	2.00	0.00
400.0	4.00	349.54	399.8	6.9	-1.3	6.9	2.00	2.00	0.00
500.0	6.00	349.54	499.5	15.4	-2.8	15.4	2.00	2.00	0.00
600.0	8.00	349.54	598.7	27.4	-5.1	27.4	2.00	2.00	0.00
700.0	10.00	349.54	697.5	42.8	-7.9	42.8	2.00	2.00	0.00
800.0	12.00	349.54	795.6	61.6	-11.4	61.6	2.00	2.00	0.00
865.5	13.31	349.54	859.6	75.7	-14.0	75.7	2.00	2.00	0.00
Hold 13.31° Inc									
900.0	13.31	349.54	893.1	83.5	-15.4	83.5	0.00	0.00	0.00
1,000.0	13.31	349.54	990.4	106.1	-19.6	106.1	0.00	0.00	0.00
1,100.0	13.31	349.54	1,087.7	128.8	-23.8	128.8	0.00	0.00	0.00
1,200.0	13.31	349.54	1,185.0	151.4	-27.9	151.4	0.00	0.00	0.00
1,300.0	13.31	349.54	1,282.4	174.0	-32.1	174.0	0.00	0.00	0.00
1,400.0	13.31	349.54	1,379.7	196.7	-36.3	196.7	0.00	0.00	0.00
1,500.0	13.31	349.54	1,477.0	219.3	-40.5	219.3	0.00	0.00	0.00
1,600.0	13.31	349.54	1,574.3	242.0	-44.7	242.0	0.00	0.00	0.00
1,700.0	13.31	349.54	1,671.6	264.6	-48.8	264.6	0.00	0.00	0.00
1,800.0	13.31	349.54	1,768.9	287.3	-53.0	287.3	0.00	0.00	0.00
1,900.0	13.31	349.54	1,866.2	309.9	-57.2	309.9	0.00	0.00	0.00
2,000.0	13.31	349.54	1,963.6	332.5	-61.4	332.5	0.00	0.00	0.00
2,100.0	13.31	349.54	2,060.9	355.2	-65.5	355.2	0.00	0.00	0.00
2,200.0	13.31	349.54	2,158.2	377.8	-69.7	377.8	0.00	0.00	0.00
2,300.0	13.31	349.54	2,255.5	400.5	-73.9	400.5	0.00	0.00	0.00
2,400.0	13.31	349.54	2,352.8	423.1	-78.1	423.1	0.00	0.00	0.00
2,500.0	13.31	349.54	2,450.1	445.7	-82.3	445.7	0.00	0.00	0.00
2,600.0	13.31	349.54	2,547.4	468.4	-86.4	468.4	0.00	0.00	0.00
2,700.0	13.31	349.54	2,644.7	491.0	-90.6	491.0	0.00	0.00	0.00
2,800.0	13.31	349.54	2,742.1	513.7	-94.8	513.7	0.00	0.00	0.00
2,900.0	13.31	349.54	2,839.4	536.3	-99.0	536.3	0.00	0.00	0.00
3,000.0	13.31	349.54	2,936.7	558.9	-103.1	558.9	0.00	0.00	0.00
3,100.0	13.31	349.54	3,034.0	581.6	-107.3	581.6	0.00	0.00	0.00
3,200.0	13.31	349.54	3,131.3	604.2	-111.5	604.2	0.00	0.00	0.00
3,300.0	13.31	349.54	3,228.6	626.9	-115.7	626.9	0.00	0.00	0.00
3,400.0	13.31	349.54	3,325.9	649.5	-119.9	649.5	0.00	0.00	0.00
3,500.0	13.31	349.54	3,423.3	672.1	-124.0	672.1	0.00	0.00	0.00
3,600.0	13.31	349.54	3,520.6	694.8	-128.2	694.8	0.00	0.00	0.00
3,700.0	13.31	349.54	3,617.9	717.4	-132.4	717.4	0.00	0.00	0.00
3,800.0	13.31	349.54	3,715.2	740.1	-136.6	740.1	0.00	0.00	0.00
3,887.1	13.31	349.54	3,800.0	759.8	-140.2	759.8	0.00	0.00	0.00
PARKMAN									
3,900.0	13.31	349.54	3,812.5	762.7	-140.7	762.7	0.00	0.00	0.00
4,000.0	13.31	349.54	3,909.8	785.3	-144.9	785.3	0.00	0.00	0.00
4,100.0	13.31	349.54	4,007.1	808.0	-149.1	808.0	0.00	0.00	0.00
4,200.0	13.31	349.54	4,104.5	830.6	-153.3	830.6	0.00	0.00	0.00
4,300.0	13.31	349.54	4,201.8	853.3	-157.5	853.3	0.00	0.00	0.00
4,400.0	13.31	349.54	4,299.1	875.9	-161.6	875.9	0.00	0.00	0.00
4,500.0	13.31	349.54	4,396.4	898.5	-165.8	898.5	0.00	0.00	0.00
4,600.0	13.31	349.54	4,493.7	921.2	-170.0	921.2	0.00	0.00	0.00
4,657.8	13.31	349.54	4,550.0	934.3	-172.4	934.3	0.00	0.00	0.00

# Planning Report

<b>Database:</b>	EDT_32Bit_ODBC	<b>Local Co-ordinate Reference:</b>	Well AD-J EVANS C3-20-24
<b>Company:</b>	EXTRACTION OIL & GAS	<b>TVD Reference:</b>	KB-EST @ 4654.0usft (Original Well Elev)
<b>Project:</b>	Weld County	<b>MD Reference:</b>	KB-EST @ 4654.0usft (Original Well Elev)
<b>Site:</b>	Sec 21-T5N-R65W	<b>North Reference:</b>	True
<b>Well:</b>	AD-J EVANS C3-20-24	<b>Survey Calculation Method:</b>	Minimum Curvature
<b>Wellbore:</b>	ORIGINAL WELLBORE		
<b>Design:</b>	PROPOSAL #1		

Planned Survey									
Measured Depth (usft)	Inclination (°)	Azimuth (°)	Vertical Depth (usft)	+N/-S (usft)	+E/-W (usft)	Vertical Section (usft)	Dogleg Rate (°/100ft)	Build Rate (°/100ft)	Turn Rate (°/100ft)
<b>SUSSEX</b>									
4,700.0	13.31	349.54	4,591.0	943.8	-174.2	943.8	0.00	0.00	0.00
4,800.0	13.31	349.54	4,688.3	966.5	-178.3	966.5	0.00	0.00	0.00
4,900.0	13.31	349.54	4,785.6	989.1	-182.5	989.1	0.00	0.00	0.00
5,000.0	13.31	349.54	4,883.0	1,011.8	-186.7	1,011.8	0.00	0.00	0.00
5,100.0	13.31	349.54	4,980.3	1,034.4	-190.9	1,034.4	0.00	0.00	0.00
5,181.9	13.31	349.54	5,060.0	1,052.9	-194.3	1,052.9	0.00	0.00	0.00
<b>SHANNON</b>									
5,200.0	13.31	349.54	5,077.6	1,057.0	-195.1	1,057.0	0.00	0.00	0.00
5,300.0	13.31	349.54	5,174.9	1,079.7	-199.2	1,079.7	0.00	0.00	0.00
5,400.0	13.31	349.54	5,272.2	1,102.3	-203.4	1,102.3	0.00	0.00	0.00
5,500.0	13.31	349.54	5,369.5	1,125.0	-207.6	1,125.0	0.00	0.00	0.00
5,600.0	13.31	349.54	5,466.8	1,147.6	-211.8	1,147.6	0.00	0.00	0.00
5,700.0	13.31	349.54	5,564.2	1,170.2	-215.9	1,170.2	0.00	0.00	0.00
5,800.0	13.31	349.54	5,661.5	1,192.9	-220.1	1,192.9	0.00	0.00	0.00
5,900.0	13.31	349.54	5,758.8	1,215.5	-224.3	1,215.5	0.00	0.00	0.00
6,000.0	13.31	349.54	5,856.1	1,238.2	-228.5	1,238.2	0.00	0.00	0.00
6,100.0	13.31	349.54	5,953.4	1,260.8	-232.7	1,260.8	0.00	0.00	0.00
6,200.0	13.31	349.54	6,050.7	1,283.4	-236.8	1,283.4	0.00	0.00	0.00
6,300.0	13.31	349.54	6,148.0	1,306.1	-241.0	1,306.1	0.00	0.00	0.00
6,400.0	13.31	349.54	6,245.4	1,328.7	-245.2	1,328.7	0.00	0.00	0.00
6,500.0	13.31	349.54	6,342.7	1,351.4	-249.4	1,351.4	0.00	0.00	0.00
6,600.0	13.31	349.54	6,440.0	1,374.0	-253.6	1,374.0	0.00	0.00	0.00
6,700.0	13.31	349.54	6,537.3	1,396.6	-257.7	1,396.6	0.00	0.00	0.00
6,800.0	13.31	349.54	6,634.6	1,419.3	-261.9	1,419.3	0.00	0.00	0.00
6,852.9	13.31	349.54	6,686.1	1,431.3	-264.1	1,431.3	0.00	0.00	0.00
<b>KOP, Build 10°/100'</b>									
6,900.0	14.90	331.24	6,731.8	1,441.9	-268.0	1,441.9	10.00	3.37	-38.85
6,950.0	17.81	316.72	6,779.8	1,453.1	-276.4	1,453.1	10.00	5.82	-29.06
7,000.0	21.48	306.57	6,826.9	1,464.1	-289.0	1,464.1	10.00	7.35	-20.29
7,041.5	24.87	300.47	6,865.0	1,473.1	-302.6	1,473.1	10.00	8.17	-14.71
<b>SHARON SPRINGS</b>									
7,050.0	25.59	299.41	6,872.7	1,474.9	-305.7	1,474.9	10.00	8.47	-12.46
7,069.3	27.25	297.20	6,890.0	1,479.0	-313.3	1,479.0	10.00	8.61	-11.44
<b>NIOBRARA</b>									
7,100.0	29.96	294.16	6,917.0	1,485.3	-326.5	1,485.3	10.00	8.81	-9.90
7,150.0	34.48	290.16	6,959.2	1,495.3	-351.2	1,495.3	10.00	9.05	-8.00
7,200.0	39.11	287.00	6,999.3	1,504.8	-379.6	1,504.8	10.00	9.26	-6.33
7,250.0	43.81	284.41	7,036.7	1,513.7	-411.5	1,513.7	10.00	9.40	-5.18
7,300.0	48.56	282.23	7,071.4	1,522.0	-446.6	1,522.0	10.00	9.49	-4.36
7,350.0	53.34	280.35	7,102.8	1,529.6	-484.6	1,529.6	10.00	9.57	-3.76
7,400.0	58.15	278.69	7,131.0	1,536.4	-525.4	1,536.4	10.00	9.62	-3.32
7,450.0	62.97	277.20	7,155.6	1,542.4	-568.5	1,542.4	10.00	9.66	-2.99
7,496.4	67.47	275.92	7,175.0	1,547.2	-610.4	1,547.2	10.00	9.68	-2.75
<b>FORT HAYS</b>									
7,500.0	67.82	275.83	7,176.4	1,547.6	-613.7	1,547.6	10.00	9.70	-2.65
7,550.0	72.67	274.55	7,193.3	1,551.8	-660.5	1,551.8	10.00	9.71	-2.56
7,600.0	77.53	273.33	7,206.1	1,555.1	-708.7	1,555.1	10.00	9.72	-2.43
7,619.4	79.42	272.88	7,210.0	1,556.1	-727.7	1,556.1	10.00	9.73	-2.36
<b>CODELL</b>									
7,650.0	82.40	272.17	7,214.8	1,557.5	-757.9	1,557.5	10.00	9.73	-2.32
7,700.0	87.27	271.02	7,219.3	1,558.9	-807.6	1,558.9	10.00	9.74	-2.28
7,728.1	90.00	270.39	7,220.0	1,559.2	-835.7	1,559.2	10.00	9.74	-2.27

# Planning Report

<b>Database:</b>	EDT_32Bit_ODBC	<b>Local Co-ordinate Reference:</b>	Well AD-J EVANS C3-20-24
<b>Company:</b>	EXTRACTION OIL & GAS	<b>TVD Reference:</b>	KB-EST @ 4654.0usft (Original Well Elev)
<b>Project:</b>	Weld County	<b>MD Reference:</b>	KB-EST @ 4654.0usft (Original Well Elev)
<b>Site:</b>	Sec 21-T5N-R65W	<b>North Reference:</b>	True
<b>Well:</b>	AD-J EVANS C3-20-24	<b>Survey Calculation Method:</b>	Minimum Curvature
<b>Wellbore:</b>	ORIGINAL WELLBORE		
<b>Design:</b>	PROPOSAL #1		

Planned Survey										
Measured Depth (usft)	Inclination (°)	Azimuth (°)	Vertical Depth (usft)	+N/-S (usft)	+E/-W (usft)	Vertical Section (usft)	Dogleg Rate (°/100ft)	Build Rate (°/100ft)	Turn Rate (°/100ft)	
LP @ 90° Inc, 270.39° Azm Hold										
7,800.0	90.00	270.39	7,220.0	1,559.7	-907.6	1,559.7	0.00	0.00	0.00	
7,900.0	90.00	270.39	7,220.0	1,560.4	-1,007.6	1,560.4	0.00	0.00	0.00	
8,000.0	90.00	270.39	7,220.0	1,561.0	-1,107.6	1,561.0	0.00	0.00	0.00	
8,100.0	90.00	270.39	7,220.0	1,561.7	-1,207.6	1,561.7	0.00	0.00	0.00	
8,200.0	90.00	270.39	7,220.0	1,562.4	-1,307.6	1,562.4	0.00	0.00	0.00	
8,300.0	90.00	270.39	7,220.0	1,563.1	-1,407.6	1,563.1	0.00	0.00	0.00	
8,400.0	90.00	270.39	7,220.0	1,563.8	-1,507.6	1,563.8	0.00	0.00	0.00	
8,500.0	90.00	270.39	7,220.0	1,564.4	-1,607.6	1,564.4	0.00	0.00	0.00	
8,600.0	90.00	270.39	7,220.0	1,565.1	-1,707.6	1,565.1	0.00	0.00	0.00	
8,700.0	90.00	270.39	7,220.0	1,565.8	-1,807.6	1,565.8	0.00	0.00	0.00	
8,800.0	90.00	270.39	7,220.0	1,566.5	-1,907.6	1,566.5	0.00	0.00	0.00	
8,900.0	90.00	270.39	7,220.0	1,567.2	-2,007.6	1,567.2	0.00	0.00	0.00	
9,000.0	90.00	270.39	7,220.0	1,567.8	-2,107.6	1,567.8	0.00	0.00	0.00	
9,100.0	90.00	270.39	7,220.0	1,568.5	-2,207.6	1,568.5	0.00	0.00	0.00	
9,200.0	90.00	270.39	7,220.0	1,569.2	-2,307.6	1,569.2	0.00	0.00	0.00	
9,300.0	90.00	270.39	7,220.0	1,569.9	-2,407.6	1,569.9	0.00	0.00	0.00	
9,400.0	90.00	270.39	7,220.0	1,570.5	-2,507.6	1,570.5	0.00	0.00	0.00	
9,500.0	90.00	270.39	7,220.0	1,571.2	-2,607.6	1,571.2	0.00	0.00	0.00	
9,600.0	90.00	270.39	7,220.0	1,571.9	-2,707.6	1,571.9	0.00	0.00	0.00	
9,700.0	90.00	270.39	7,220.0	1,572.6	-2,807.6	1,572.6	0.00	0.00	0.00	
9,800.0	90.00	270.39	7,220.0	1,573.3	-2,907.6	1,573.3	0.00	0.00	0.00	
9,900.0	90.00	270.39	7,220.0	1,573.9	-3,007.6	1,573.9	0.00	0.00	0.00	
10,000.0	90.00	270.39	7,220.0	1,574.6	-3,107.6	1,574.6	0.00	0.00	0.00	
10,100.0	90.00	270.39	7,220.0	1,575.3	-3,207.6	1,575.3	0.00	0.00	0.00	
10,200.0	90.00	270.39	7,220.0	1,576.0	-3,307.6	1,576.0	0.00	0.00	0.00	
10,300.0	90.00	270.39	7,220.0	1,576.7	-3,407.6	1,576.7	0.00	0.00	0.00	
10,400.0	90.00	270.39	7,220.0	1,577.3	-3,507.5	1,577.3	0.00	0.00	0.00	
10,500.0	90.00	270.39	7,220.0	1,578.0	-3,607.5	1,578.0	0.00	0.00	0.00	
10,600.0	90.00	270.39	7,220.0	1,578.7	-3,707.5	1,578.7	0.00	0.00	0.00	
10,700.0	90.00	270.39	7,220.0	1,579.4	-3,807.5	1,579.4	0.00	0.00	0.00	
10,800.0	90.00	270.39	7,220.0	1,580.0	-3,907.5	1,580.0	0.00	0.00	0.00	
10,900.0	90.00	270.39	7,220.0	1,580.7	-4,007.5	1,580.7	0.00	0.00	0.00	
11,000.0	90.00	270.39	7,220.0	1,581.4	-4,107.5	1,581.4	0.00	0.00	0.00	
11,100.0	90.00	270.39	7,220.0	1,582.1	-4,207.5	1,582.1	0.00	0.00	0.00	
11,200.0	90.00	270.39	7,220.0	1,582.8	-4,307.5	1,582.8	0.00	0.00	0.00	
11,300.0	90.00	270.39	7,220.0	1,583.4	-4,407.5	1,583.4	0.00	0.00	0.00	
11,400.0	90.00	270.39	7,220.0	1,584.1	-4,507.5	1,584.1	0.00	0.00	0.00	
11,500.0	90.00	270.39	7,220.0	1,584.8	-4,607.5	1,584.8	0.00	0.00	0.00	
11,600.0	90.00	270.39	7,220.0	1,585.5	-4,707.5	1,585.5	0.00	0.00	0.00	
11,700.0	90.00	270.39	7,220.0	1,586.2	-4,807.5	1,586.2	0.00	0.00	0.00	
11,800.0	90.00	270.39	7,220.0	1,586.8	-4,907.5	1,586.8	0.00	0.00	0.00	
11,900.0	90.00	270.39	7,220.0	1,587.5	-5,007.5	1,587.5	0.00	0.00	0.00	
12,000.0	90.00	270.39	7,220.0	1,588.2	-5,107.5	1,588.2	0.00	0.00	0.00	
12,100.0	90.00	270.39	7,220.0	1,588.9	-5,207.5	1,588.9	0.00	0.00	0.00	
12,200.0	90.00	270.39	7,220.0	1,589.5	-5,307.5	1,589.5	0.00	0.00	0.00	
12,300.0	90.00	270.39	7,220.0	1,590.2	-5,407.5	1,590.2	0.00	0.00	0.00	
12,400.0	90.00	270.39	7,220.0	1,590.9	-5,507.5	1,590.9	0.00	0.00	0.00	
12,500.0	90.00	270.39	7,220.0	1,591.6	-5,607.5	1,591.6	0.00	0.00	0.00	
12,600.0	90.00	270.39	7,220.0	1,592.3	-5,707.5	1,592.3	0.00	0.00	0.00	
12,700.0	90.00	270.39	7,220.0	1,592.9	-5,807.5	1,592.9	0.00	0.00	0.00	
20,060.2	90.00	270.39	7,220.0	1,642.8	-13,167.5	1,642.8	0.00	0.00	0.00	
TD at 20060.2' MD										

## Planning Report

<b>Database:</b>	EDT_32Bit_ODBC	<b>Local Co-ordinate Reference:</b>	Well AD-J EVANS C3-20-24
<b>Company:</b>	EXTRACTION OIL & GAS	<b>TVD Reference:</b>	KB-EST @ 4654.0usft (Original Well Elev)
<b>Project:</b>	Weld County	<b>MD Reference:</b>	KB-EST @ 4654.0usft (Original Well Elev)
<b>Site:</b>	Sec 21-T5N-R65W	<b>North Reference:</b>	True
<b>Well:</b>	AD-J EVANS C3-20-24	<b>Survey Calculation Method:</b>	Minimum Curvature
<b>Wellbore:</b>	ORIGINAL WELLBORE		
<b>Design:</b>	PROPOSAL #1		

Formations						
Measured Depth (usft)	Vertical Depth (usft)	Name	Lithology	Dip (°)	Dip Direction (°)	
3,887.1	3,800.0	PARKMAN				
4,657.8	4,550.0	SUSSEX				
5,181.9	5,060.0	SHANNON				
7,041.5	6,865.0	SHARON SPRINGS				
7,069.3	6,890.0	NIOBRARA				
7,496.4	7,175.0	FORT HAYS				
7,619.4	7,210.0	CODELL				

Plan Annotations					
Measured Depth (usft)	Vertical Depth (usft)	Local Coordinates			
		+N/-S (usft)	+E/-W (usft)	Comment	
200.0	200.0	0.0	0.0	Build 2°/100'	
865.5	859.6	75.7	-14.0	Hold 13.31° Inc	
6,852.9	6,686.1	1,431.3	-264.1	KOP, Build 10°/100'	
7,728.1	7,220.0	1,559.2	-835.7	LP @ 90° Inc, 270.39° Azm Hold	
20,060.2	7,220.0	1,642.8	-13,167.5	TD at 20060.2' MD	