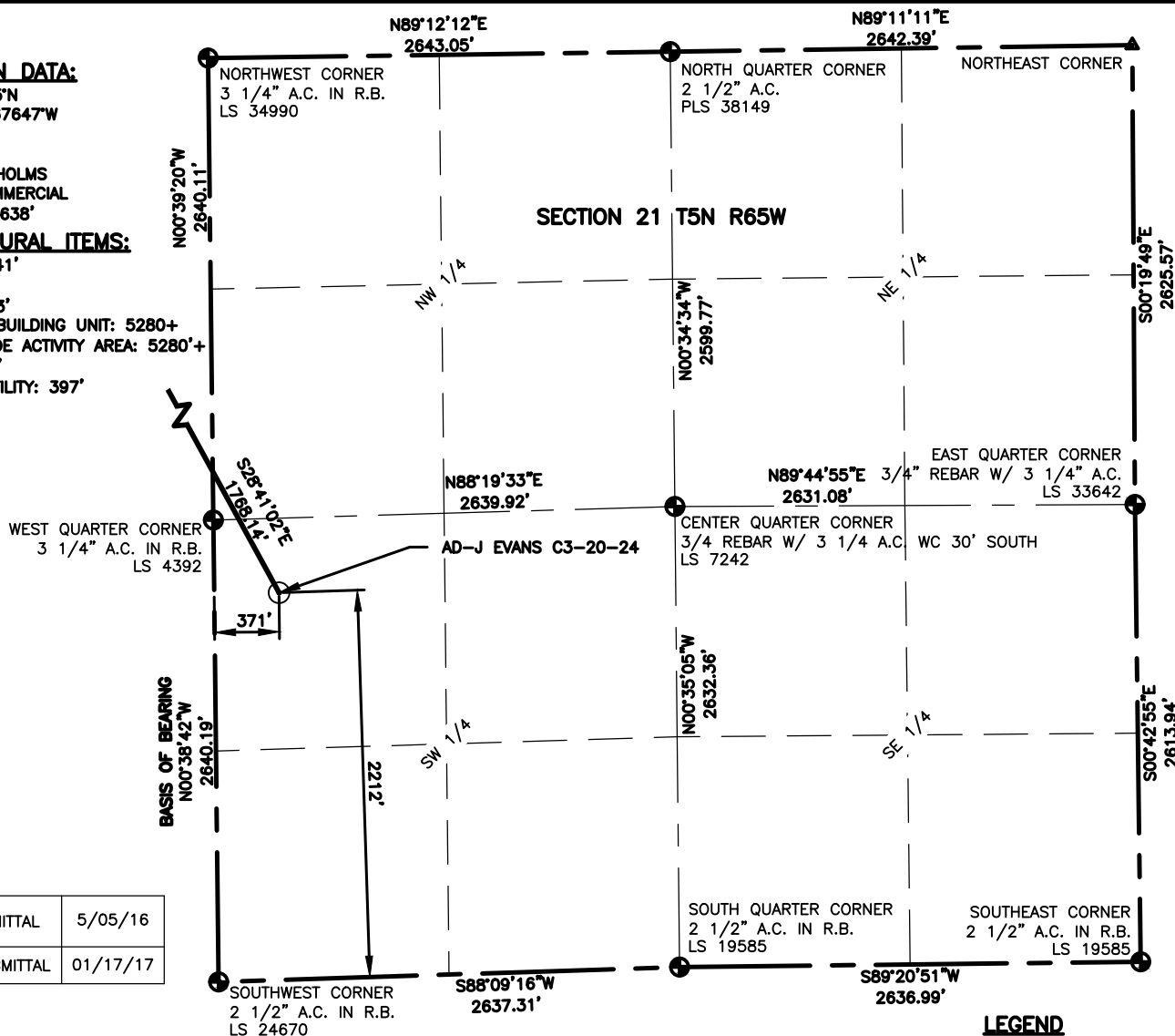


**WELL LOCATION DATA:**

LATITUDE: 40.38345°N  
LONGITUDE: -104.67647°W  
ELEVATION: 4638'  
PDOP: 2.1  
OPERATOR: C.WESTHOLMS  
SURFACE USE: COMMERCIAL  
PROPOSED ELEV: 4638'

**NEAREST CULTURAL ITEMS:**

PROPERTY LINE: 341'  
BUILDING: 913'  
BUILDING UNIT: 823'  
HIGH OCCUPANCY BUILDING UNIT: 5280'+  
DESIGNATED OUTSIDE ACTIVITY AREA: 5280'+  
PUBLIC ROAD: 357'  
ABOVE GROUND UTILITY: 397'  
RAILROAD: 2958'



FIRST SUBMITTAL	5/05/16
SECOND SUBMITTAL	01/17/17

**LEGEND**

- △ COMPUTED ALIQUOT CORNER FROM MONUMENT RECORDS
- ⊙ PROPOSED WELL
- ⊕ ALIQUOT CORNER
- A.C. ALUMINUM CAP
- ⊖ BOTTOM HOLE
- R.B. RANGE BOX

**NOTES:**

- DISTANCES ARE MEASURED PERPENDICULAR TO NEAREST SECTION LINE AND ARE SHOWN ON THE SAME SIDE OF THE SECTION LINE WHERE THE WELL IS LOCATED.
- THIS MAP DOES NOT REPRESENT A MONUMENTED BOUNDARY SURVEY. SIXTEENTH CORNER LOCATIONS ARE COMPUTED, UNLESS OTHERWISE NOTED.
- BOTTOM HOLE LOCATIONS AND HORIZONTAL COMPLETION ZONE PROVIDED BY OTHERS.

**BASIS OF BEARING:**

THE WEST LINE OF THE SOUTHWEST QUARTER OF SECTION 21-T5N-R65W BEARS N00°38'42"W BETWEEN THE SOUTHWEST CORNER OF SECTION 21 MONUMENTED WITH 2 1/2" A.C. IN R.B. STAMPED "LS 24670" AND THE WEST QUARTER CORNER OF SECTION 21 MONUMENTED WITH 3 1/4" A.C. IN R.B. STAMPED "LS 4392" BASED ON THE COLORADO NORTH 0501 STATE PLANE COORDINATE SYSTEM.

ELEVATIONS ARE BASED ON NAVD 88, AS OBSERVED FROM GPS OBSERVATIONS

**LAND SURVEYOR'S CERTIFICATION**

LAMP, RYNEARSON & ASSOCIATES, INC., OF FT. COLLINS, COLORADO HAS, IN ACCORDANCE WITH A REQUEST FROM DUSTIN DYK AT EXTRACTION, DETERMINED THE SURFACE LOCATION OF THE WELL DESIGNATED AS AD-J EVANS C3-20-24 TO BE 2212' FROM THE SOUTH LINE AND 371' FROM THE WEST LINE OF SECTION 21, TOWNSHIP 5 NORTH, RANGE 65 WEST OF THE 6TH P.M., WELD COUNTY, COLORADO.



0 1000  
SCALE: 1"= 1000'  
U.S. SURVEY FEET

FRANK A. KOHL  
COLORADO PLS 37067  
DATE OF SURVEY: 07/20/2015 (SECTION CONTROL)  
DATE OF SURVEY: 04/13/2016 (WELL LOCATION)



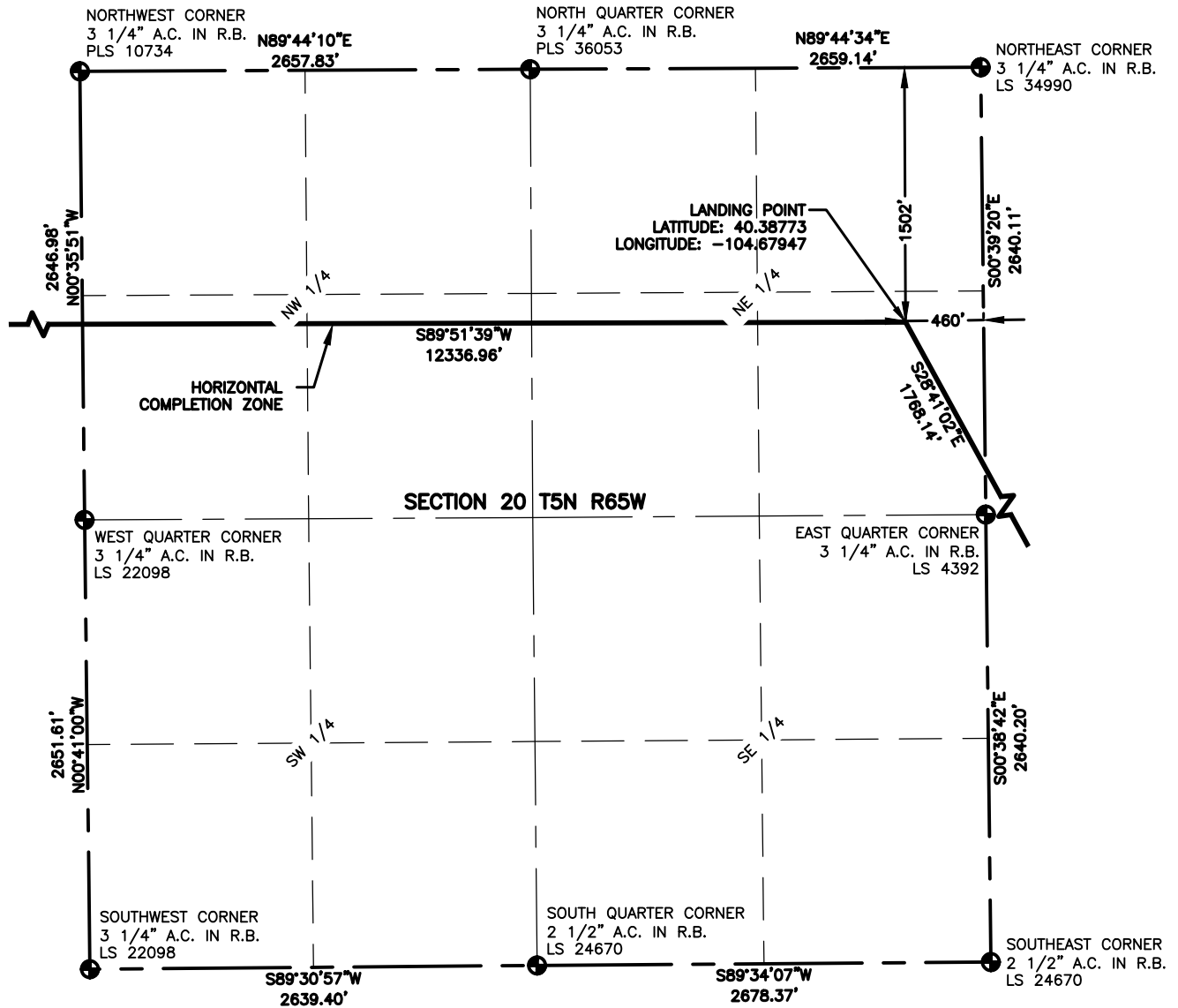
**LAMP RYNEARSON**  
& ASSOCIATES

4715 Innovation Drive 970.226.0342 | P  
Fort Collins, CO 80525 970.226.0879 | F  
www.LRA-Inc.com

PROPOSED WELL LOCATION EXHIBIT  
AD-J EVANS C3-20-24  
1 OF 4

DRAWN BY JMC	DATE 01/17/17	COGCC ID 0216012	PROJECT - TASK NUMBER 21-1\DRAWINGS\EXHIBITS\PRELIMINARY PLAT	BOOK AND PAGE MRI 04 20-25
-----------------	------------------	---------------------	--	-------------------------------

**SURFACE - LOCATION**  
NW/4 SW/4 SEC 21 T5N R65W



#### LEGEND

- ALIQUOT CORNER      ⊙ PROPOSED WELL
- ⊙ BOTTOM HOLE      A.C. ALUMINUM CAP
- R.B. RANGE BOX

#### NOTES:

- DISTANCES ARE MEASURED PERPENDICULAR TO NEAREST SECTION LINE AND ARE SHOWN ON THE SAME SIDE OF THE SECTION LINE WHERE THE WELL IS LOCATED.
- THIS MAP DOES NOT REPRESENT A MONUMENTED BOUNDARY SURVEY. SIXTEENTH CORNER LOCATIONS ARE COMPUTED, UNLESS OTHERWISE NOTED.
- BOTTOM HOLE LOCATIONS AND HORIZONTAL COMPLETION ZONE PROVIDED BY OTHERS.



0 1000  
SCALE: 1" = 1000'  
U.S. SURVEY FEET



**LAMP RYNEARSON**  
& ASSOCIATES

4715 Innovation Drive 970.226.0342 | P  
Fort Collins, CO 80525 970.226.0879 | F  
[www.LRA-Inc.com](http://www.LRA-Inc.com)

PROPOSED WELL LOCATION EXHIBIT  
AD-J EVANS C3-20-24  
2 OF 4

DRAWN BY  
JMC  
PATH/FILENAME

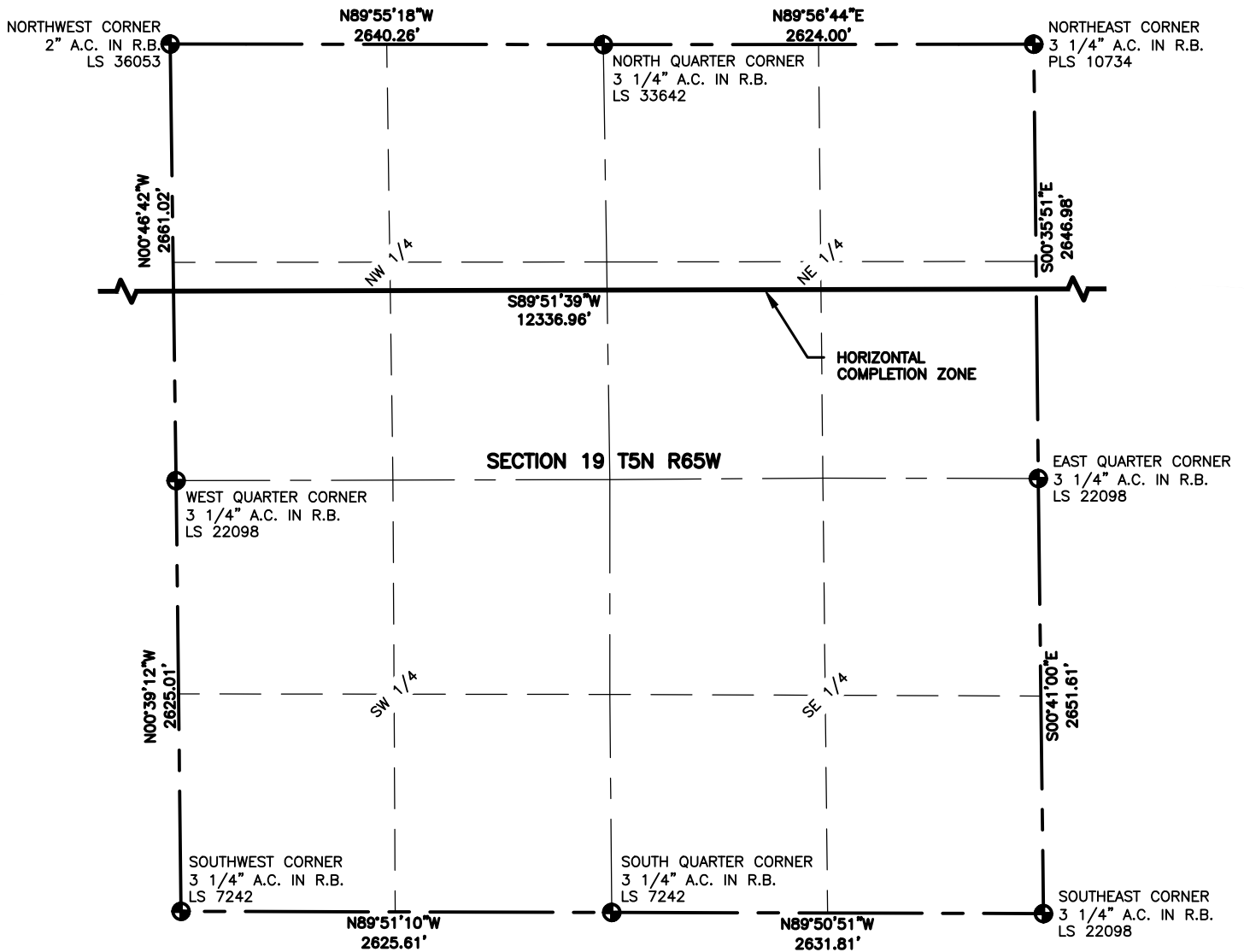
DATE  
01/17/17  
P:\\_Engineering\0216012 Andrey 21-I\DRAWINGS\EXHIBITS\PRELIMINARY PLAT

COGCC ID  
0216012

PROJECT - TASK NUMBER  
0216012

BOOK AND PAGE  
MRI\_04 20-25

SURFACE - LOCATION  
NW/4 SW/4 SEC 21 T5N R65W

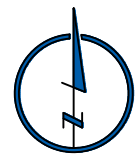


### LEGEND

- ALIQUOT CORNER
- ⊙ PROPOSED WELL
- ⊙ BOTTOM HOLE
- A.C. ALUMINUM CAP
- R.B. RANGE BOX

### NOTES:

- DISTANCES ARE MEASURED PERPENDICULAR TO NEAREST SECTION LINE AND ARE SHOWN ON THE SAME SIDE OF THE SECTION LINE WHERE THE WELL IS LOCATED.
- THIS MAP DOES NOT REPRESENT A MONUMENTED BOUNDARY SURVEY. SIXTEENTH CORNER LOCATIONS ARE COMPUTED, UNLESS OTHERWISE NOTED.
- BOTTOM HOLE LOCATIONS AND HORIZONTAL COMPLETION ZONE PROVIDED BY OTHERS.



0 1000  
SCALE: 1"= 1000'  
U.S. SURVEY FEET



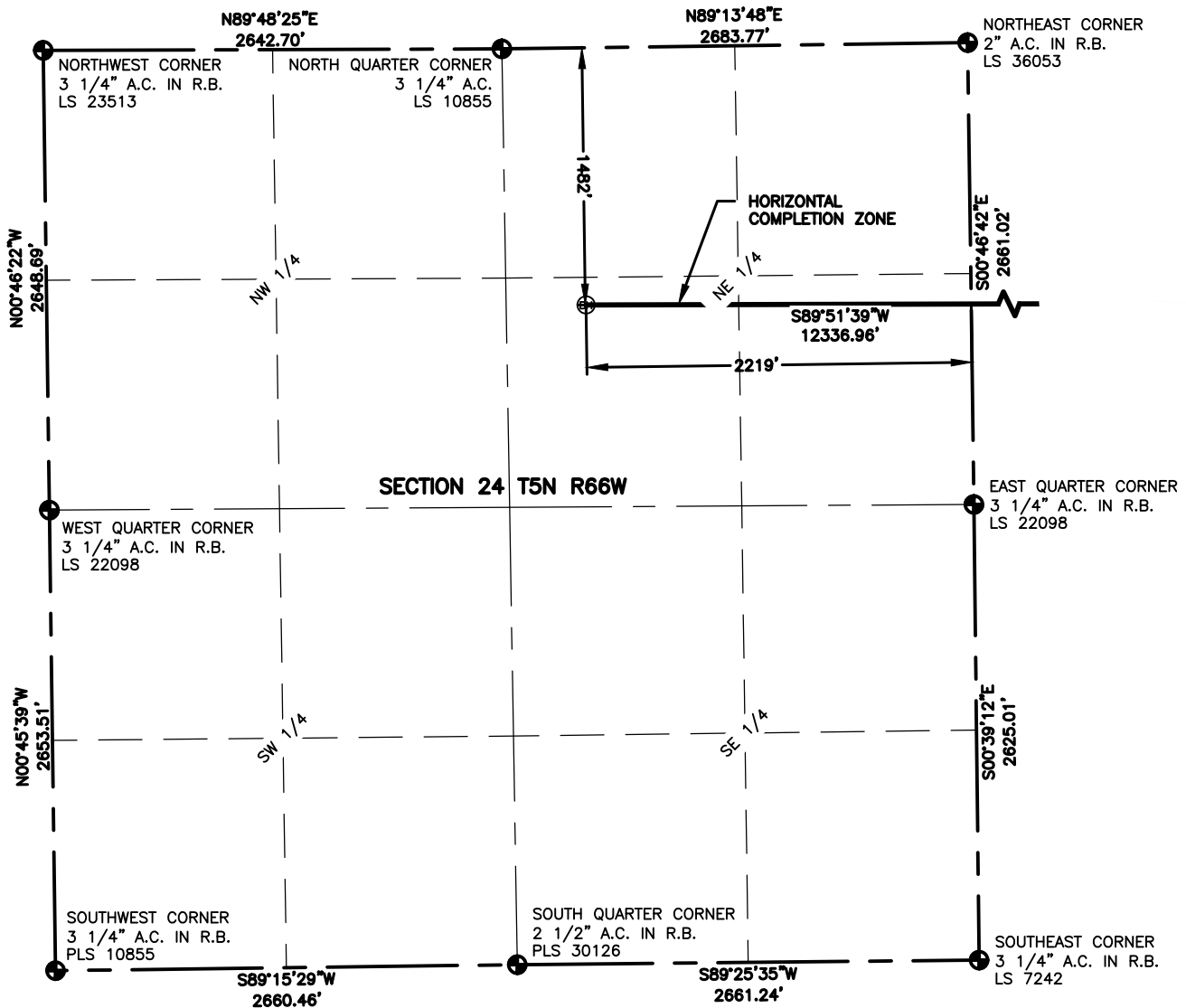
**LAMP RYNEARSON**  
& ASSOCIATES

4715 Innovation Drive 970.226.0342 | P  
Fort Collins, CO 80525 970.226.0879 | F  
www.LRA-Inc.com

PROPOSED WELL LOCATION EXHIBIT  
AD-J EVANS C3-20-24  
3 OF 4

DRAWN BY	DATE	COGCC ID	PROJECT - TASK NUMBER	BOOK AND PAGE
JMC	01/17/17	0216012	21-I\DRAWINGS\EXHIBITS\PRELIMINARY PLAT	MRI_04 20-25

**SURFACE - LOCATION**  
NW/4 SW/4 SEC 21 T5N R65W

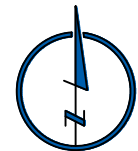


### LEGEND

- ALIQUOT CORNER
- ⊙ PROPOSED WELL
- ⊙ BOTTOM HOLE
- A.C. ALUMINUM CAP
- R.B. RANGE BOX

### NOTES:

- DISTANCES ARE MEASURED PERPENDICULAR TO NEAREST SECTION LINE AND ARE SHOWN ON THE SAME SIDE OF THE SECTION LINE WHERE THE WELL IS LOCATED.
- THIS MAP DOES NOT REPRESENT A MONUMENTED BOUNDARY SURVEY. SIXTEENTH CORNER LOCATIONS ARE COMPUTED, UNLESS OTHERWISE NOTED.
- BOTTOM HOLE LOCATIONS AND HORIZONTAL COMPLETION ZONE PROVIDED BY OTHERS.



0 1000  
 SCALE: 1" = 1000'  
 U.S. SURVEY FEET



**LAMP RYNEARSON**  
 & ASSOCIATES

4715 Innovation Drive 970.226.0342 | P  
 Fort Collins, CO 80525 970.226.0879 | F  
 www.LRA-Inc.com

PROPOSED WELL LOCATION EXHIBIT  
 AD-J EVANS C3-20-24  
 4 OF 4

DRAWN BY	DATE	COGCC ID	PROJECT - TASK NUMBER	BOOK AND PAGE
JMC	01/17/17	0216012	21-1\DRAWINGS\EXHIBITS\PRELIMINARY PLAT	MRI 04 20-25

**SURFACE - LOCATION**  
 NW/4 SW/4 SEC 21 T5N R65W