

EXTRACTION OIL & GAS

Weld County

Sec 21-T5N-R65W

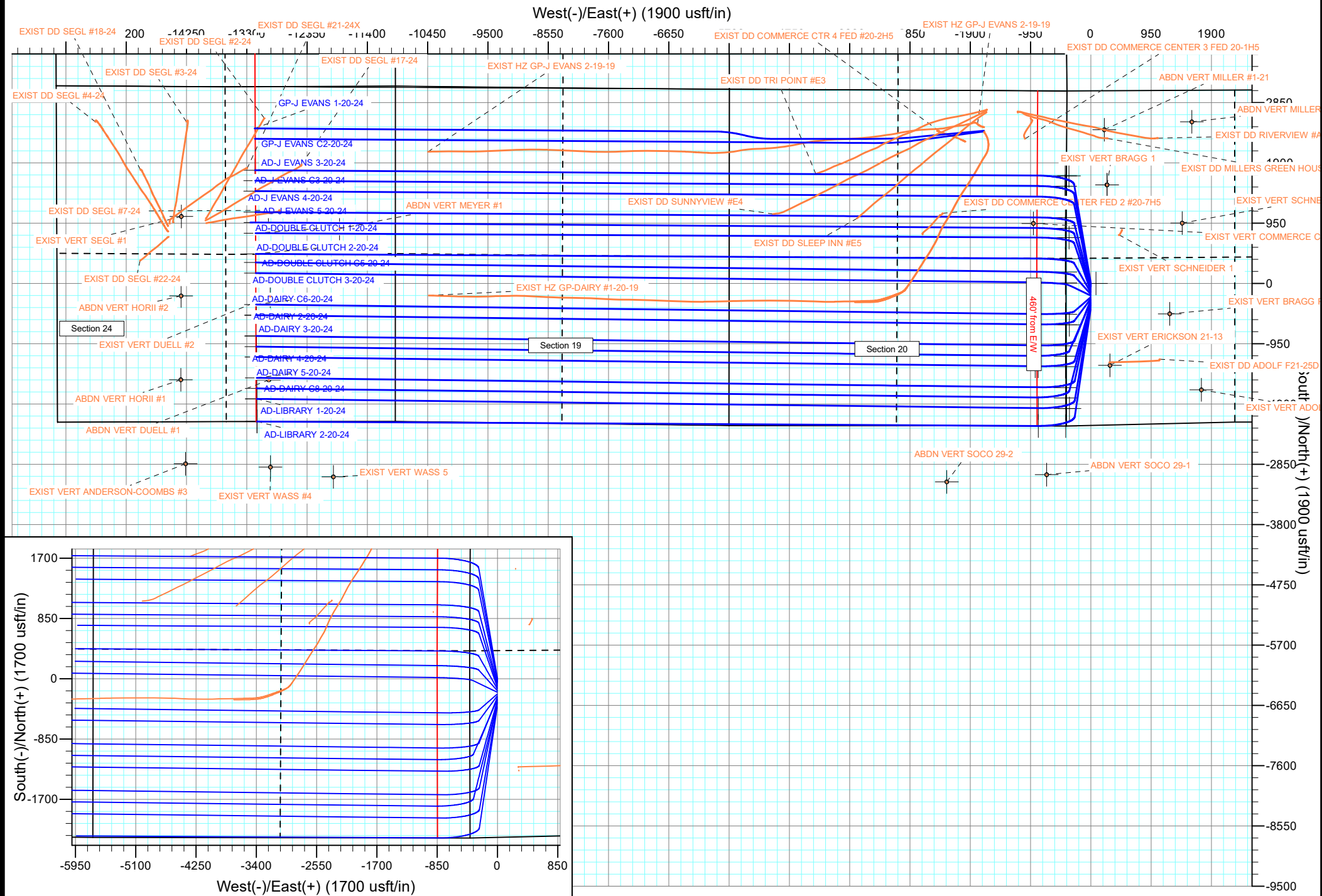
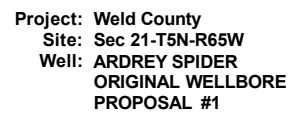
AD-J EVANS 4-20-24

ORIGINAL WELLBORE

PROPOSAL #1

Anticollision Report

09 February, 2017



Anticollision Report

Company:	EXTRACTION OIL & GAS	Local Co-ordinate Reference:	Well AD-J EVANS 4-20-24
Project:	Weld County	TVD Reference:	KB-EST @ 4654.0usft (Original Well Elev)
Reference Site:	Sec 21-T5N-R65W	MD Reference:	KB-EST @ 4654.0usft (Original Well Elev)
Site Error:	0.0 usft	North Reference:	True
Reference Well:	AD-J EVANS 4-20-24	Survey Calculation Method:	Minimum Curvature
Well Error:	0.0 usft	Output errors are at	2.00 sigma
Reference Wellbore	ORIGINAL WELLBORE	Database:	EDT_32Bit_ODBC
Reference Design:	PROPOSAL #1	Offset TVD Reference:	Offset Datum

Reference	PROPOSAL #1		
Filter type:	NO GLOBAL FILTER: Using user defined selection & filtering criteria		
Interpolation Method:	MD + Stations Interval 100.0usft	Error Model:	ISCWSA
Depth Range:	Unlimited	Scan Method:	Closest Approach 3D
Results Limited by:	Maximum center-center distance of 10,000.0 usft	Error Surface:	Pedal Curve
Warning Levels Evaluated at:	2.00 Sigma	Casing Method:	Not applied

Survey Tool Program	Date	2/9/2017		
From (usft)	To (usft)	Survey (Wellbore)	Tool Name	Description
0.0	19,826.8	PROPOSAL #1 (ORIGINAL WELLBORE)	MWD	OWSG MWD - Standard

Summary						
Site Name	Reference Measured Depth (usft)	Offset Measured Depth (usft)	Distance Between Centres (usft)	Distance Between Ellipses (usft)	Separation Factor	Warning
Offset Well - Wellbore - Design						
Sec 20-T5N-R65W						
ABDN VERT MEYER #1 - Wellbore #1 - Design #1	18,494.2	7,145.0	579.6	122.6	1.268	Level 3, CC, ES, SF
EXIST DD COMMERCE CENTER 3 FED 20-1H5 - Wellb	7,705.1	7,078.9	910.4	860.7	18.315	CC, ES
EXIST DD COMMERCE CENTER 3 FED 20-1H5 - Wellb	8,100.0	7,076.3	992.3	931.7	16.360	SF
EXIST DD COMMERCE CENTER FED 2 #20-7H5 - Wel	8,991.9	7,066.5	274.7	195.9	3.484	CC, ES, SF
EXIST DD COMMERCE CTR 4 FED #20-2H5 - Wellbore	9,061.5	7,114.9	1,025.2	944.1	12.642	CC
EXIST DD COMMERCE CTR 4 FED #20-2H5 - Wellbore	9,100.0	7,114.3	1,025.9	943.3	12.420	ES
EXIST DD COMMERCE CTR 4 FED #20-2H5 - Wellbore	9,400.0	7,109.2	1,079.6	988.2	11.815	SF
EXIST DD MILLERS GREEN HOUSE #A10 - Wellbore #	6,803.7	6,878.9	1,150.2	1,090.8	19.366	CC, ES
EXIST DD MILLERS GREEN HOUSE #A10 - Wellbore #	6,950.0	7,014.1	1,161.7	1,101.0	19.140	SF
EXIST DD RIVERVIEW #A9 - Wellbore #1 - Wellbore #1	5,032.2	5,077.7	1,666.3	1,608.7	28.961	CC
EXIST DD RIVERVIEW #A9 - Wellbore #1 - Wellbore #1	5,100.0	5,129.7	1,666.7	1,608.7	28.693	ES
EXIST DD RIVERVIEW #A9 - Wellbore #1 - Wellbore #1	6,750.0	7,102.7	1,683.8	1,614.5	24.295	SF
EXIST DD SLEEP INN #E5 - Wellbore #1 - Wellbore #1	10,311.7	7,579.8	339.4	202.2	2.473	CC, ES, SF
EXIST DD SUNNYVIEW #E4 - Wellbore #1 - Wellbore #	11,619.8	8,063.3	298.3	98.4	1.493	Level 3, CC, ES, SF
EXIST DD TRI POINT #E3 - Wellbore #1 - Wellbore #1	10,954.3	7,693.6	349.6	182.7	2.095	CC, ES, SF
EXIST HZ GP-DAIRY #1-20-19 - ORIGINAL WELLBORE	9,528.2	7,096.3	1,563.0	1,464.9	15.935	CC
EXIST HZ GP-DAIRY #1-20-19 - ORIGINAL WELLBORE	9,600.0	7,111.6	1,564.5	1,464.0	15.561	ES
EXIST HZ GP-DAIRY #1-20-19 - ORIGINAL WELLBORE	10,800.0	8,205.0	1,748.6	1,591.2	11.107	SF
EXIST HZ GP-DAIRY #1-20-19 - SIDETRACK - SIDETR	9,530.1	7,102.5	1,562.6	1,464.3	15.895	CC
EXIST HZ GP-DAIRY #1-20-19 - SIDETRACK - SIDETR	17,100.0	15,000.0	1,632.0	1,126.1	3.226	ES
EXIST HZ GP-DAIRY #1-20-19 - SIDETRACK - SIDETR	17,200.0	15,000.0	1,636.2	1,127.5	3.217	SF
EXIST HZ GP-J EVANS 2-19-19 - MWD SURVEYS - MW	17,106.8	13,082.0	641.6	144.4	1.290	Level 3, CC, ES, SF
EXIST HZ GP-J EVANS 2-19-19 - SURFACE GYROS - S	1,589.3	1,000.0	2,947.8	2,941.3	454.650	CC
EXIST HZ GP-J EVANS 2-19-19 - SURFACE GYROS - S	1,600.0	1,000.0	2,947.8	2,941.3	451.702	ES
EXIST HZ GP-J EVANS 2-19-19 - SURFACE GYROS - S	13,000.0	1,163.0	7,516.3	7,457.9	128.782	SF
EXIST VERT COMMERCE CENTER #1 - Wellbore #1 - D	7,561.8	7,016.0	422.7	249.5	2.440	CC, ES, SF
GP-J EVANS 1-20-24 - ORIGINAL WELLBORE - PROPO	11,677.3	8,948.3	892.5	681.1	4.221	CC
GP-J EVANS 1-20-24 - ORIGINAL WELLBORE - PROPO	19,826.8	17,107.0	998.5	344.9	1.528	ES, SF
GP-J EVANS C2-20-24 - ORIGINAL WELLBORE - PROP	19,826.8	17,276.0	824.5	166.4	1.253	Level 3, CC, ES, SF

Anticollision Report

Company:	EXTRACTION OIL & GAS	Local Co-ordinate Reference:	Well AD-J EVANS 4-20-24
Project:	Weld County	TVD Reference:	KB-EST @ 4654.0usft (Original Well Elev)
Reference Site:	Sec 21-T5N-R65W	MD Reference:	KB-EST @ 4654.0usft (Original Well Elev)
Site Error:	0.0 usft	North Reference:	True
Reference Well:	AD-J EVANS 4-20-24	Survey Calculation Method:	Minimum Curvature
Well Error:	0.0 usft	Output errors are at	2.00 sigma
Reference Wellbore	ORIGINAL WELLBORE	Database:	EDT_32Bit_ODBC
Reference Design:	PROPOSAL #1	Offset TVD Reference:	Offset Datum

Summary						
Site Name	Reference Measured Depth (usft)	Offset Measured Depth (usft)	Distance Between Centres (usft)	Distance Between Ellipses (usft)	Separation Factor	Warning
Offset Well - Wellbore - Design						
Sec 21-T5N-R65W						
ABDN VERT MILLER #1-21 - Wellbore #1 - Design #1	6,845.7	6,708.1	1,247.3	1,084.3	7.654	CC, ES
ABDN VERT MILLER #1-21 - Wellbore #1 - Design #1	7,050.0	6,853.9	1,269.8	1,101.5	7.547	SF
ABDN VERT MILLER F 21-3 - Wellbore #1 - Design #1	6,680.7	6,525.3	2,263.0	2,101.2	13.982	CC
ABDN VERT MILLER F 21-3 - Wellbore #1 - Design #1	6,700.0	6,543.9	2,263.3	2,100.9	13.942	ES
ABDN VERT MILLER F 21-3 - Wellbore #1 - Design #1	6,900.0	6,725.8	2,298.7	2,131.3	13.731	SF
ABDN VERT SOCO 29-1 - Wellbore #1 - Design #1	300.0	303.0	3,046.1	3,040.0	500.033	CC
ABDN VERT SOCO 29-1 - Wellbore #1 - Design #1	400.0	403.0	3,047.6	3,039.2	358.863	ES
ABDN VERT SOCO 29-1 - Wellbore #1 - Design #1	9,100.0	7,007.0	4,727.5	4,530.5	23.997	SF
ABDN VERT SOCO 29-2 - Wellbore #1 - Design #1	300.0	302.0	3,825.1	3,819.1	634.982	CC
ABDN VERT SOCO 29-2 - Wellbore #1 - Design #1	400.0	402.0	3,826.3	3,817.8	454.270	ES
ABDN VERT SOCO 29-2 - Wellbore #1 - Design #1	10,500.0	7,012.0	4,781.8	4,550.2	20.643	SF
AD-DAIRY 2-20-24 - ORIGINAL WELLBORE - PROPOS	300.0	301.0	193.1	191.4	111.065	CC, ES
AD-DAIRY 2-20-24 - ORIGINAL WELLBORE - PROPOS	19,826.8	19,696.1	1,956.3	1,252.1	2.778	SF
AD-DAIRY 3-20-24 - ORIGINAL WELLBORE - PROPOS	300.0	301.0	215.0	213.2	123.636	CC, ES
AD-DAIRY 3-20-24 - ORIGINAL WELLBORE - PROPOS	19,826.8	19,719.6	2,284.2	1,580.2	3.244	SF
AD-DAIRY 4-20-24 - ORIGINAL WELLBORE - PROPOS	300.0	301.0	262.3	260.6	151.030	CC, ES
AD-DAIRY 4-20-24 - ORIGINAL WELLBORE - PROPOS	19,826.8	19,741.5	2,615.7	1,911.8	3.716	SF
AD-DAIRY 5-20-24 - ORIGINAL WELLBORE - PROPOS	300.0	301.0	287.8	286.1	165.712	CC, ES
AD-DAIRY 5-20-24 - ORIGINAL WELLBORE - PROPOS	19,826.8	19,791.8	2,943.6	2,239.7	4.182	SF
AD-DAIRY C6-20-24 - ORIGINAL WELLBORE - PROPO	300.0	300.0	167.6	165.9	96.599	CC, ES
AD-DAIRY C6-20-24 - ORIGINAL WELLBORE - PROPO	19,826.8	19,898.7	1,801.0	1,100.4	2.571	SF
AD-DAIRY C7-20-24 - ORIGINAL WELLBORE - PROPO	300.0	301.0	240.4	238.7	138.300	CC, ES
AD-DAIRY C7-20-24 - ORIGINAL WELLBORE - PROPO	19,826.8	19,866.3	2,460.7	1,759.9	3.512	SF
AD-DAIRY C8-20-24 - ORIGINAL WELLBORE - PROPO	300.0	301.0	309.7	308.0	178.134	CC, ES
AD-DAIRY C8-20-24 - ORIGINAL WELLBORE - PROPO	19,826.8	19,943.7	3,118.2	2,416.9	4.447	SF
AD-DOUBLE CLUTCH 1-20-24 - ORIGINAL WELLBORE	300.0	300.0	72.9	71.2	42.024	CC
AD-DOUBLE CLUTCH 1-20-24 - ORIGINAL WELLBORE	19,826.8	19,742.3	663.0	-41.4	0.941	Level 1, ES, SF
AD-DOUBLE CLUTCH 2-20-24 - ORIGINAL WELLBORE	300.0	300.0	94.8	93.0	54.613	CC, ES
AD-DOUBLE CLUTCH 2-20-24 - ORIGINAL WELLBORE	19,826.8	19,710.6	990.9	286.5	1.407	Level 3, SF
AD-DOUBLE CLUTCH 3-20-24 - ORIGINAL WELLBORE	300.0	301.0	142.1	140.4	81.735	CC, ES
AD-DOUBLE CLUTCH 3-20-24 - ORIGINAL WELLBORE	19,826.8	19,614.5	1,293.3	589.7	1.838	SF
AD-DOUBLE CLUTCH C5-20-24 - ORIGINAL WELLBOR	300.0	300.0	120.2	118.5	69.308	CC, ES
AD-DOUBLE CLUTCH C5-20-24 - ORIGINAL WELLBOR	19,816.4	19,917.1	1,145.0	449.7	1.647	SF
AD-J EVANS 3-20-24 - ORIGINAL WELLBORE - PROPO	100.0	100.0	47.4	47.1	157.290	CC
AD-J EVANS 3-20-24 - ORIGINAL WELLBORE - PROPO	19,826.8	19,885.4	327.8	-377.5	0.465	Level 1, ES, SF
AD-J EVANS 5-20-24 - ORIGINAL WELLBORE - PROPO	300.0	300.0	22.0	20.3	12.700	CC
AD-J EVANS 5-20-24 - ORIGINAL WELLBORE - PROPO	19,826.8	19,774.3	331.5	-373.7	0.470	Level 1, ES, SF
AD-J EVANS C3-20-24 - ORIGINAL WELLBORE - PROP	200.0	200.0	25.5	24.5	25.052	CC
AD-J EVANS C3-20-24 - ORIGINAL WELLBORE - PROP	19,826.8	20,059.3	266.4	-190.9	0.583	Level 1, ES, SF
AD-J EVANS C4-20-24 - ORIGINAL WELLBORE - PROP	300.0	300.0	47.4	45.7	27.341	CC
AD-J EVANS C4-20-24 - ORIGINAL WELLBORE - PROP	19,826.8	19,969.2	538.1	-118.9	0.819	Level 1, ES, SF
AD-LIBRARY 1-20-24 - ORIGINAL WELLBORE - PROP	200.0	201.0	335.2	334.2	328.097	CC, ES
AD-LIBRARY 1-20-24 - ORIGINAL WELLBORE - PROP	19,826.8	19,845.8	3,275.1	2,571.3	4.653	SF
AD-LIBRARY 2-20-24 - ORIGINAL WELLBORE - PROP	100.0	101.0	360.7	360.4	1,191.901	CC, ES
AD-LIBRARY 2-20-24 - ORIGINAL WELLBORE - PROP	19,826.8	19,903.3	3,632.2	2,928.5	5.162	SF
EXIST DD ADOLF F21-25D - Wellbore #1 - Wellbore #1	315.8	318.7	1,232.0	1,230.5	839.114	CC, ES
EXIST DD ADOLF F21-25D - Wellbore #1 - Wellbore #1	6,750.0	6,694.3	2,823.7	2,778.6	62.586	SF
EXIST VERT ADOLF F 21-14 - Wellbore #1 - Design #1	300.0	290.0	2,384.0	2,378.1	404.799	CC
EXIST VERT ADOLF F 21-14 - Wellbore #1 - Design #1	400.0	390.0	2,385.4	2,377.1	287.616	ES
EXIST VERT ADOLF F 21-14 - Wellbore #1 - Design #1	6,900.0	6,724.8	3,637.3	3,475.9	22.534	SF
EXIST VERT BRAGG 1 - Wellbore #1 - Design #1	6,665.8	6,500.9	601.5	439.8	3.719	CC, ES
EXIST VERT BRAGG 1 - Wellbore #1 - Design #1	6,750.0	6,581.4	607.4	443.4	3.704	SF
EXIST VERT BRAGG PM F 21-11 - Wellbore #1 - Design	300.0	289.0	1,314.5	1,308.2	209.769	CC

CC - Min centre to center distance or convergent point, SF - min separation factor, ES - min ellipse separation

Anticollision Report

Company:	EXTRACTION OIL & GAS	Local Co-ordinate Reference:	Well AD-J EVANS 4-20-24
Project:	Weld County	TVD Reference:	KB-EST @ 4654.0usft (Original Well Elev)
Reference Site:	Sec 21-T5N-R65W	MD Reference:	KB-EST @ 4654.0usft (Original Well Elev)
Site Error:	0.0 usft	North Reference:	True
Reference Well:	AD-J EVANS 4-20-24	Survey Calculation Method:	Minimum Curvature
Well Error:	0.0 usft	Output errors are at	2.00 sigma
Reference Wellbore	ORIGINAL WELLBORE	Database:	EDT_32Bit_ODBC
Reference Design:	PROPOSAL #1	Offset TVD Reference:	Offset Datum

Summary						
Site Name	Reference Measured Depth (usft)	Offset Measured Depth (usft)	Distance Between Centres (usft)	Distance Between Ellipses (usft)	Separation Factor	Warning
Offset Well - Wellbore - Design						
Sec 21-T5N-R65W						
EXIST VERT BRAGG PM F 21-11 - Wellbore #1 - Design	400.0	389.0	1,315.4	1,306.7	151.720	ES
EXIST VERT BRAGG PM F 21-11 - Wellbore #1 - Design	6,750.0	6,589.4	2,324.2	2,164.9	14.586	SF
EXIST VERT ERICKSON 21-13 - Wellbore #1 - Design #	300.0	289.0	1,278.2	1,272.3	217.446	CC
EXIST VERT ERICKSON 21-13 - Wellbore #1 - Design #	400.0	389.0	1,279.9	1,271.6	154.510	ES
EXIST VERT ERICKSON 21-13 - Wellbore #1 - Design #	6,950.0	6,764.7	2,689.3	2,527.9	16.660	SF
EXIST VERT SCHNEIDER 1 - Wellbore #1 - Wellbore #1	4,206.2	4,133.4	629.3	608.4	30.095	CC
EXIST VERT SCHNEIDER 1 - Wellbore #1 - Wellbore #1	4,300.0	4,224.8	629.7	608.3	29.469	ES
EXIST VERT SCHNEIDER 1 - Wellbore #1 - Wellbore #1	5,300.0	5,193.6	684.8	659.3	26.852	SF
EXIST VERT SCHNEIDER 22-21 - Wellbore #1 - Design	3,760.8	3,675.2	1,610.2	1,519.5	17.763	CC
EXIST VERT SCHNEIDER 22-21 - Wellbore #1 - Design	4,600.0	4,506.1	1,620.7	1,509.2	14.529	ES
EXIST VERT SCHNEIDER 22-21 - Wellbore #1 - Design	6,700.0	6,541.9	1,740.7	1,578.4	10.728	SF
EXIST VERT WASS 5 - Wellbore #1 - Design #1	18,563.1	7,070.0	4,494.5	4,036.4	9.810	CC
EXIST VERT WASS 5 - Wellbore #1 - Design #1	18,700.0	7,070.0	4,496.6	4,035.4	9.749	ES
EXIST VERT WASS 5 - Wellbore #1 - Design #1	19,200.0	7,070.0	4,539.4	4,069.4	9.659	SF
EXIST VERT WASS 6 - Wellbore #1 - Design #1	18,242.4	7,070.0	5,803.9	5,354.4	12.913	CC
EXIST VERT WASS 6 - Wellbore #1 - Design #1	18,400.0	7,070.0	5,806.0	5,352.8	12.811	ES
EXIST VERT WASS 6 - Wellbore #1 - Design #1	19,300.0	7,070.0	5,899.5	5,429.5	12.553	SF
SW NE SEC. 26 T5N R66W 6th P.M.						
ABDN VERT DUELL #1 - Wellbore #1 - Design #1	19,592.8	7,103.0	2,976.7	2,488.4	6.096	CC
ABDN VERT DUELL #1 - Wellbore #1 - Design #1	19,700.0	7,103.0	2,978.6	2,488.2	6.073	ES
ABDN VERT DUELL #1 - Wellbore #1 - Design #1	19,826.8	7,103.0	2,985.9	2,493.5	6.064	SF
ABDN VERT HORII #1 - Wellbore #1 - Design #1	19,826.8	7,155.0	3,196.4	2,720.1	6.711	CC, ES, SF
ABDN VERT HORII #2 - Wellbore #1 - Design #1	19,826.8	7,144.0	2,022.9	1,581.6	4.585	CC, ES, SF
EXIST DD SEGL #17-24 - Wellbore #1 - Wellbore #1	19,099.3	7,434.6	420.8	55.9	1.153	Level 2, CC
EXIST DD SEGL #17-24 - Wellbore #1 - Wellbore #1	19,100.0	7,434.6	420.8	55.9	1.153	Level 2, ES, SF
EXIST DD SEGL #18-24 - Wellbore #1 - Wellbore #1	19,826.8	7,311.4	1,841.5	1,761.3	22.956	CC, ES, SF
EXIST DD SEGL #21-24X - Wellbore #1 - Wellbore #1	19,826.8	7,431.6	382.5	26.5	1.074	Level 2, CC, ES, SF
EXIST DD SEGL #22-24 - Wellbore #1 - Wellbore #1	19,826.8	7,212.4	2,120.4	1,905.9	9.883	CC, ES, SF
EXIST DD SEGL #2-24 - Wellbore #1 - Wellbore #1	19,692.3	7,524.9	1,149.4	776.7	3.083	CC
EXIST DD SEGL #2-24 - Wellbore #1 - Wellbore #1	19,700.0	7,524.9	1,149.5	776.5	3.082	ES, SF
EXIST DD SEGL #3-24 - Wellbore #1 - Wellbore #1	19,826.8	7,502.2	1,543.7	1,275.5	5.755	CC, ES, SF
EXIST DD SEGL #4-24 - Wellbore #1 - Wellbore #1	19,826.8	7,674.7	2,747.0	2,590.1	17.511	CC, ES, SF
EXIST DD SEGL #7-24 - Wellbore #1 - Wellbore #1	19,443.2	7,366.5	299.4	-69.0	0.813	Level 1, CC, ES, SF
EXIST VERT ANDERSON-COOMBS #2 - Wellbore #1 -	19,826.8	7,100.0	5,715.5	5,365.1	16.314	CC, ES, SF
EXIST VERT ANDERSON-COOMBS #3 - Wellbore #1 -	19,826.8	7,140.0	4,436.0	3,947.5	9.082	CC, ES, SF
EXIST VERT DUELL #2 - Wellbore #1 - Design #1	19,579.5	7,126.0	1,656.4	1,168.2	3.393	CC
EXIST VERT DUELL #2 - Wellbore #1 - Design #1	19,600.0	7,126.0	1,656.5	1,168.0	3.391	ES, SF
EXIST VERT SEGL #1 - Wellbore #1 - Design #1	19,826.8	7,164.0	1,231.4	953.9	4.438	CC, ES, SF
EXIST VERT WASS #2 - Wellbore #1 - Design #1	19,561.5	7,106.0	5,619.5	5,132.0	11.527	CC
EXIST VERT WASS #2 - Wellbore #1 - Design #1	19,700.0	7,106.0	5,621.2	5,130.4	11.453	ES
EXIST VERT WASS #2 - Wellbore #1 - Design #1	19,826.8	7,106.0	5,625.8	5,132.2	11.397	SF
EXIST VERT WASS #4 - Wellbore #1 - Design #1	19,556.0	7,102.3	4,348.1	3,860.7	8.922	CC
EXIST VERT WASS #4 - Wellbore #1 - Design #1	19,700.0	7,102.3	4,350.4	3,859.9	8.869	ES
EXIST VERT WASS #4 - Wellbore #1 - Design #1	19,826.8	7,102.3	4,356.5	3,863.4	8.836	SF