

EXTRACTION OIL & GAS

Weld County

Sec 21-T5N-R65W

AD-J EVANS 4-20-24

ORIGINAL WELLBORE

Plan: PROPOSAL #1

Standard Planning Report

09 February, 2017



Project: Weld County
Site: Sec 21-T5N-R65W
Well: AD-J EVANS 4-20-24
Wellbore: ORIGINAL WELLBORE
Design: PROPOSAL #1



Azimuths to True North
Magnetic North: 8.28°

Magnetic Field
Strength: 52516.6snT
Dip Angle: 66.88°
Date: 5/22/2016
Model: IGRF2015

WELL DETAILS: AD-J EVANS 4-20-24

+N/-S	+E/-W	Northing	Ground Level:	4638.0	Latitude	Longitude	Slot
0.0	0.0	1383571.08	Easting	3229414.57	40° 23' 0.168 N	104° 40' 35.292 W	

SECTION DETAILS

Sec	MD	Inc	Azi	TVD	+N/-S	+E/-W	Dleg	TFace	VSec	Target
1	0.0	0.00	0.00	0.0	0.0	0.0	0.00	0.00	0.0	
2	300.0	0.00	0.00	300.0	0.0	0.0	0.00	0.00	0.0	
3	935.9	12.72	348.47	930.7	68.9	-14.0	2.00	348.47	21.8	
4	6620.7	12.72	348.47	6476.0	1295.2	-264.2	0.00	0.00	409.5	
5	7494.6	90.00	270.41	7010.0	1417.1	-835.7	10.00	-78.35	991.1	HZ LANDING PNT -
6	19826.8	90.00	270.41	7010.0	1504.4	-13167.6	0.00	0.00	13253.3	BHL - AD-J EVANS

ANNOTATIONS

MD	Inc	Azi	TVD	+N/-S	+E/-W	VSec	Departure	Annotation
300.0	0.00	0.00	300.0	0.0	0.0	0.0	0.0	Build 2°/100'
935.9	12.72	348.47	930.7	68.9	-14.0	68.9	70.3	Hold 12.72° Inc
6620.7	12.72	348.47	6476.0	1295.2	-264.2	1295.2	1321.8	KOP, Build 10°/100'
7494.6	90.00	270.41	7010.0	1417.1	-835.7	1417.1	1922.0	LP @ 90° Inc, 270.41° Azm Hold
19826.8	90.00	270.41	7010.0	1504.4	-13167.6	1504.4	14254.2	TD at 19826.8' MD

DESIGN TARGET DETAILS

Name	TVD	+N/-S	+E/-W	Northing	Easting	Latitude	Longitude	Shape
BHL - AD-J EVANS 4-20-24	7010.0	1504.4	-13167.6	1384953.15	3216233.55	40° 23' 15.000 N	104° 43' 25.464 W	Point
HZ LANDING PNT - AD-J EVANS 4-20-24	7010.0	1417.1	-835.7	1384980.39	3228565.75	40° 23' 14.172 N	104° 40' 46.092 W	Point

FORMATION TOP DETAILS

TVDPath	MDPath	Formation
3800.0	3877.4	PARKMAN
4550.0	4646.2	SUSSEX
5060.0	5169.1	SHANNON
6865.0	7072.6	SHARON SPRINGS
6890.0	7112.3	NIOBRARA

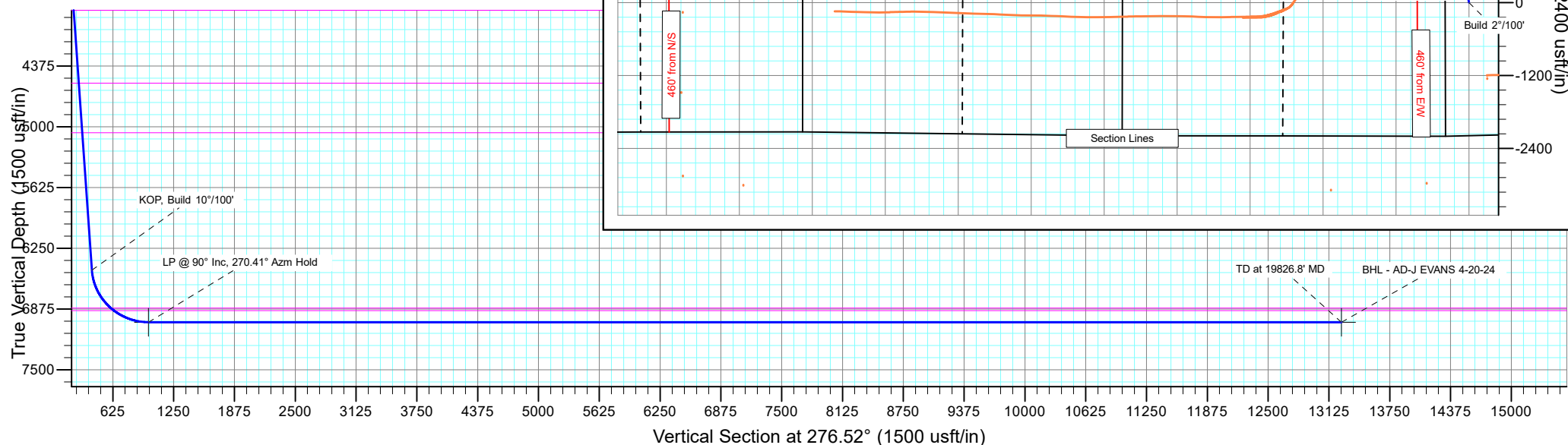
PROJECT DETAILS: Weld County

Geodetic System: US State Plane 1983
Datum: North American Datum 1983
Ellipsoid: GRS 1980
Zone: Colorado Northern Zone
System Datum: Mean Sea Level

SHL:
371' FWL, 2188' FSL
Sec 21-T5N-R65W

LP:
1667' FNL, 460' FEL
Sec 20-T5N-R65W

BHL:
1647' FNL, 2218' FEL
Sec 24-T5N-R66W



Planning Report

Database:	EDT_32Bit_ODBC	Local Co-ordinate Reference:	Well AD-J EVANS 4-20-24
Company:	EXTRACTION OIL & GAS	TVD Reference:	KB-EST @ 4654.0usft (Original Well Elev)
Project:	Weld County	MD Reference:	KB-EST @ 4654.0usft (Original Well Elev)
Site:	Sec 21-T5N-R65W	North Reference:	True
Well:	AD-J EVANS 4-20-24	Survey Calculation Method:	Minimum Curvature
Wellbore:	ORIGINAL WELLBORE		
Design:	PROPOSAL #1		

Project	Weld County		
Map System:	US State Plane 1983	System Datum:	Mean Sea Level
Geo Datum:	North American Datum 1983		
Map Zone:	Colorado Northern Zone		

Site	Sec 21-T5N-R65W			
Site Position:		Northing:	1,383,619.20 usft	Latitude: 40° 23' 0.636 N
From:	Lat/Long	Easting:	3,229,494.91 usft	Longitude: 104° 40' 34.248 W
Position Uncertainty:	0.0 usft	Slot Radius:	13.200 in	Grid Convergence: 0.53 °

Well	AD-J EVANS 4-20-24			
Well Position	+N/-S	-47.4 usft	Northing:	1,383,571.08 usft
	+E/-W	-80.8 usft	Easting:	3,229,414.57 usft
Position Uncertainty		0.0 usft	Wellhead Elevation:	Ground Level: 4,638.0 usft

Wellbore	ORIGINAL WELLBORE				
Magnetics	Model Name	Sample Date	Declination (°)	Dip Angle (°)	Field Strength (nT)
	IGRF2015	5/22/2016	8.28	66.88	52,516.55688602

Design	PROPOSAL #1			
Audit Notes:				
Version:	Phase:	PROTOTYPE	Tie On Depth:	0.0
Vertical Section:	Depth From (TVD) (usft)	+N/-S (usft)	+E/-W (usft)	Direction (°)
	0.0	0.0	0.0	0.00

Plan Survey Tool Program	Date	2/9/2017		
Depth From (usft)	Depth To (usft)	Survey (Wellbore)	Tool Name	Remarks
1	0.0	19,826.8	PROPOSAL #1 (ORIGINAL WEL	MWD
			OWSG MWD - Standard	

Plan Sections										
Measured Depth (usft)	Inclination (°)	Azimuth (°)	Vertical Depth (usft)	+N/-S (usft)	+E/-W (usft)	Dogleg Rate (°/100ft)	Build Rate (°/100ft)	Turn Rate (°/100ft)	TFO (°)	Target
0.0	0.00	0.00	0.0	0.0	0.0	0.00	0.00	0.00	0.00	
300.0	0.00	0.00	300.0	0.0	0.0	0.00	0.00	0.00	0.00	
935.9	12.72	348.47	930.7	68.9	-14.0	2.00	2.00	0.00	348.47	
6,620.7	12.72	348.47	6,476.0	1,295.2	-264.2	0.00	0.00	0.00	0.00	
7,494.6	90.00	270.41	7,010.0	1,417.1	-835.7	10.00	8.84	-8.93	-78.35	HZ LANDING PNT - /
19,826.8	90.00	270.41	7,010.0	1,504.4	-13,167.6	0.00	0.00	0.00	0.00	BHL - AD-J EVANS 4-

Planning Report

Database:	EDT_32Bit_ODBC	Local Co-ordinate Reference:	Well AD-J EVANS 4-20-24
Company:	EXTRACTION OIL & GAS	TVD Reference:	KB-EST @ 4654.0usft (Original Well Elev)
Project:	Weld County	MD Reference:	KB-EST @ 4654.0usft (Original Well Elev)
Site:	Sec 21-T5N-R65W	North Reference:	True
Well:	AD-J EVANS 4-20-24	Survey Calculation Method:	Minimum Curvature
Wellbore:	ORIGINAL WELLBORE		
Design:	PROPOSAL #1		

Planned Survey									
Measured Depth (usft)	Inclination (°)	Azimuth (°)	Vertical Depth (usft)	+N/-S (usft)	+E/-W (usft)	Vertical Section (usft)	Dogleg Rate (°/100ft)	Build Rate (°/100ft)	Turn Rate (°/100ft)
0.0	0.00	0.00	0.0	0.0	0.0	0.0	0.00	0.00	0.00
100.0	0.00	0.00	100.0	0.0	0.0	0.0	0.00	0.00	0.00
200.0	0.00	0.00	200.0	0.0	0.0	0.0	0.00	0.00	0.00
300.0	0.00	0.00	300.0	0.0	0.0	0.0	0.00	0.00	0.00
Build 2°/100'									
400.0	2.00	348.47	400.0	1.7	-0.3	1.7	2.00	2.00	0.00
500.0	4.00	348.47	499.8	6.8	-1.4	6.8	2.00	2.00	0.00
600.0	6.00	348.47	599.5	15.4	-3.1	15.4	2.00	2.00	0.00
700.0	8.00	348.47	698.7	27.3	-5.6	27.3	2.00	2.00	0.00
800.0	10.00	348.47	797.5	42.6	-8.7	42.6	2.00	2.00	0.00
900.0	12.00	348.47	895.6	61.3	-12.5	61.3	2.00	2.00	0.00
935.9	12.72	348.47	930.7	68.9	-14.0	68.9	2.00	2.00	0.00
Hold 12.72° Inc									
1,000.0	12.72	348.47	993.2	82.7	-16.9	82.7	0.00	0.00	0.00
1,100.0	12.72	348.47	1,090.8	104.3	-21.3	104.3	0.00	0.00	0.00
1,200.0	12.72	348.47	1,188.3	125.8	-25.7	125.8	0.00	0.00	0.00
1,300.0	12.72	348.47	1,285.9	147.4	-30.1	147.4	0.00	0.00	0.00
1,400.0	12.72	348.47	1,383.4	169.0	-34.5	169.0	0.00	0.00	0.00
1,500.0	12.72	348.47	1,481.0	190.6	-38.9	190.6	0.00	0.00	0.00
1,600.0	12.72	348.47	1,578.5	212.1	-43.3	212.1	0.00	0.00	0.00
1,700.0	12.72	348.47	1,676.0	233.7	-47.7	233.7	0.00	0.00	0.00
1,800.0	12.72	348.47	1,773.6	255.3	-52.1	255.3	0.00	0.00	0.00
1,900.0	12.72	348.47	1,871.1	276.8	-56.5	276.8	0.00	0.00	0.00
2,000.0	12.72	348.47	1,968.7	298.4	-60.9	298.4	0.00	0.00	0.00
2,100.0	12.72	348.47	2,066.2	320.0	-65.3	320.0	0.00	0.00	0.00
2,200.0	12.72	348.47	2,163.8	341.6	-69.7	341.6	0.00	0.00	0.00
2,300.0	12.72	348.47	2,261.3	363.1	-74.1	363.1	0.00	0.00	0.00
2,400.0	12.72	348.47	2,358.9	384.7	-78.5	384.7	0.00	0.00	0.00
2,500.0	12.72	348.47	2,456.4	406.3	-82.9	406.3	0.00	0.00	0.00
2,600.0	12.72	348.47	2,554.0	427.8	-87.3	427.8	0.00	0.00	0.00
2,700.0	12.72	348.47	2,651.5	449.4	-91.7	449.4	0.00	0.00	0.00
2,800.0	12.72	348.47	2,749.1	471.0	-96.1	471.0	0.00	0.00	0.00
2,900.0	12.72	348.47	2,846.6	492.6	-100.5	492.6	0.00	0.00	0.00
3,000.0	12.72	348.47	2,944.1	514.1	-104.9	514.1	0.00	0.00	0.00
3,100.0	12.72	348.47	3,041.7	535.7	-109.3	535.7	0.00	0.00	0.00
3,200.0	12.72	348.47	3,139.2	557.3	-113.7	557.3	0.00	0.00	0.00
3,300.0	12.72	348.47	3,236.8	578.8	-118.1	578.8	0.00	0.00	0.00
3,400.0	12.72	348.47	3,334.3	600.4	-122.5	600.4	0.00	0.00	0.00
3,500.0	12.72	348.47	3,431.9	622.0	-126.9	622.0	0.00	0.00	0.00
3,600.0	12.72	348.47	3,529.4	643.6	-131.3	643.6	0.00	0.00	0.00
3,700.0	12.72	348.47	3,627.0	665.1	-135.7	665.1	0.00	0.00	0.00
3,800.0	12.72	348.47	3,724.5	686.7	-140.1	686.7	0.00	0.00	0.00
3,877.4	12.72	348.47	3,800.0	703.4	-143.5	703.4	0.00	0.00	0.00
PARKMAN									
3,900.0	12.72	348.47	3,822.1	708.3	-144.5	708.3	0.00	0.00	0.00
4,000.0	12.72	348.47	3,919.6	729.8	-148.9	729.8	0.00	0.00	0.00
4,100.0	12.72	348.47	4,017.2	751.4	-153.3	751.4	0.00	0.00	0.00
4,200.0	12.72	348.47	4,114.7	773.0	-157.7	773.0	0.00	0.00	0.00
4,300.0	12.72	348.47	4,212.3	794.6	-162.1	794.6	0.00	0.00	0.00
4,400.0	12.72	348.47	4,309.8	816.1	-166.5	816.1	0.00	0.00	0.00
4,500.0	12.72	348.47	4,407.3	837.7	-170.9	837.7	0.00	0.00	0.00
4,600.0	12.72	348.47	4,504.9	859.3	-175.3	859.3	0.00	0.00	0.00
4,646.2	12.72	348.47	4,550.0	869.2	-177.3	869.2	0.00	0.00	0.00

Planning Report

Database:	EDT_32Bit_ODBC	Local Co-ordinate Reference:	Well AD-J EVANS 4-20-24
Company:	EXTRACTION OIL & GAS	TVD Reference:	KB-EST @ 4654.0usft (Original Well Elev)
Project:	Weld County	MD Reference:	KB-EST @ 4654.0usft (Original Well Elev)
Site:	Sec 21-T5N-R65W	North Reference:	True
Well:	AD-J EVANS 4-20-24	Survey Calculation Method:	Minimum Curvature
Wellbore:	ORIGINAL WELLBORE		
Design:	PROPOSAL #1		

Planned Survey									
Measured Depth (usft)	Inclination (°)	Azimuth (°)	Vertical Depth (usft)	+N/-S (usft)	+E/-W (usft)	Vertical Section (usft)	Dogleg Rate (°/100ft)	Build Rate (°/100ft)	Turn Rate (°/100ft)
SUSSEX									
4,700.0	12.72	348.47	4,602.4	880.8	-179.7	880.8	0.00	0.00	0.00
4,800.0	12.72	348.47	4,700.0	902.4	-184.1	902.4	0.00	0.00	0.00
4,900.0	12.72	348.47	4,797.5	924.0	-188.5	924.0	0.00	0.00	0.00
5,000.0	12.72	348.47	4,895.1	945.6	-192.9	945.6	0.00	0.00	0.00
5,100.0	12.72	348.47	4,992.6	967.1	-197.3	967.1	0.00	0.00	0.00
5,169.1	12.72	348.47	5,060.0	982.0	-200.3	982.0	0.00	0.00	0.00
SHANNON									
5,200.0	12.72	348.47	5,090.2	988.7	-201.7	988.7	0.00	0.00	0.00
5,300.0	12.72	348.47	5,187.7	1,010.3	-206.1	1,010.3	0.00	0.00	0.00
5,400.0	12.72	348.47	5,285.3	1,031.8	-210.5	1,031.8	0.00	0.00	0.00
5,500.0	12.72	348.47	5,382.8	1,053.4	-214.9	1,053.4	0.00	0.00	0.00
5,600.0	12.72	348.47	5,480.4	1,075.0	-219.3	1,075.0	0.00	0.00	0.00
5,700.0	12.72	348.47	5,577.9	1,096.6	-223.7	1,096.6	0.00	0.00	0.00
5,800.0	12.72	348.47	5,675.4	1,118.1	-228.1	1,118.1	0.00	0.00	0.00
5,900.0	12.72	348.47	5,773.0	1,139.7	-232.5	1,139.7	0.00	0.00	0.00
6,000.0	12.72	348.47	5,870.5	1,161.3	-236.9	1,161.3	0.00	0.00	0.00
6,100.0	12.72	348.47	5,968.1	1,182.8	-241.3	1,182.8	0.00	0.00	0.00
6,200.0	12.72	348.47	6,065.6	1,204.4	-245.7	1,204.4	0.00	0.00	0.00
6,300.0	12.72	348.47	6,163.2	1,226.0	-250.1	1,226.0	0.00	0.00	0.00
6,400.0	12.72	348.47	6,260.7	1,247.6	-254.5	1,247.6	0.00	0.00	0.00
6,500.0	12.72	348.47	6,358.3	1,269.1	-258.9	1,269.1	0.00	0.00	0.00
6,600.0	12.72	348.47	6,455.8	1,290.7	-263.3	1,290.7	0.00	0.00	0.00
6,620.7	12.72	348.47	6,476.0	1,295.2	-264.2	1,295.2	0.00	0.00	0.00
KOP, Build 10°/100'									
6,650.0	13.61	336.18	6,504.5	1,301.5	-266.2	1,301.5	10.00	3.05	-41.92
6,700.0	16.26	319.61	6,552.9	1,312.2	-273.1	1,312.2	10.00	5.30	-33.14
6,750.0	19.82	308.19	6,600.4	1,322.8	-284.3	1,322.8	10.00	7.11	-22.83
6,800.0	23.88	300.32	6,646.8	1,333.1	-299.7	1,333.1	10.00	8.13	-15.74
6,850.0	28.23	294.69	6,691.7	1,343.2	-319.2	1,343.2	10.00	8.70	-11.26
6,900.0	32.75	290.48	6,734.8	1,352.9	-342.7	1,352.9	10.00	9.05	-8.42
6,950.0	37.39	287.20	6,775.7	1,362.1	-369.9	1,362.1	10.00	9.27	-6.56
7,000.0	42.09	284.55	6,814.2	1,370.8	-400.6	1,370.8	10.00	9.41	-5.29
7,050.0	46.85	282.35	6,849.9	1,378.9	-434.7	1,378.9	10.00	9.51	-4.40
7,072.6	49.01	281.47	6,865.0	1,382.4	-451.1	1,382.4	10.00	9.57	-3.91
SHARON SPRINGS									
7,100.0	51.64	280.47	6,882.5	1,386.4	-471.8	1,386.4	10.00	9.60	-3.64
7,112.3	52.82	280.05	6,890.0	1,388.1	-481.3	1,388.1	10.00	9.62	-3.45
NIORARA									
7,150.0	56.46	278.82	6,911.8	1,393.2	-511.7	1,393.2	10.00	9.64	-3.24
7,200.0	61.30	277.35	6,937.7	1,399.2	-554.0	1,399.2	10.00	9.68	-2.95
7,250.0	66.15	276.01	6,959.8	1,404.4	-598.5	1,404.4	10.00	9.71	-2.68
7,300.0	71.02	274.76	6,978.0	1,408.7	-644.9	1,408.7	10.00	9.73	-2.49
7,350.0	75.89	273.59	6,992.3	1,412.2	-692.7	1,412.2	10.00	9.74	-2.35
7,400.0	80.77	272.46	7,002.4	1,414.8	-741.5	1,414.8	10.00	9.75	-2.25
7,450.0	85.65	271.37	7,008.3	1,416.4	-791.2	1,416.4	10.00	9.76	-2.19
7,494.6	90.00	270.41	7,010.0	1,417.1	-835.7	1,417.1	10.00	9.76	-2.16
LP @ 90° Inc, 270.41° Azm Hold									
7,500.0	90.00	270.41	7,010.0	1,417.2	-841.1	1,417.2	0.00	0.00	0.00
7,600.0	90.00	270.41	7,010.0	1,417.9	-941.1	1,417.9	0.00	0.00	0.00
7,700.0	90.00	270.41	7,010.0	1,418.6	-1,041.1	1,418.6	0.00	0.00	0.00
7,800.0	90.00	270.41	7,010.0	1,419.3	-1,141.1	1,419.3	0.00	0.00	0.00
7,900.0	90.00	270.41	7,010.0	1,420.0	-1,241.1	1,420.0	0.00	0.00	0.00

Planning Report

Database:	EDT_32Bit_ODBC	Local Co-ordinate Reference:	Well AD-J EVANS 4-20-24
Company:	EXTRACTION OIL & GAS	TVD Reference:	KB-EST @ 4654.0usft (Original Well Elev)
Project:	Weld County	MD Reference:	KB-EST @ 4654.0usft (Original Well Elev)
Site:	Sec 21-T5N-R65W	North Reference:	True
Well:	AD-J EVANS 4-20-24	Survey Calculation Method:	Minimum Curvature
Wellbore:	ORIGINAL WELLBORE		
Design:	PROPOSAL #1		

Planned Survey										
Measured Depth (usft)	Inclination (°)	Azimuth (°)	Vertical Depth (usft)	+N/-S (usft)	+E/-W (usft)	Vertical Section (usft)	Dogleg Rate (°/100ft)	Build Rate (°/100ft)	Turn Rate (°/100ft)	
8,000.0	90.00	270.41	7,010.0	1,420.7	-1,341.1	1,420.7	0.00	0.00	0.00	
8,100.0	90.00	270.41	7,010.0	1,421.4	-1,441.1	1,421.4	0.00	0.00	0.00	
8,200.0	90.00	270.41	7,010.0	1,422.1	-1,541.1	1,422.1	0.00	0.00	0.00	
8,300.0	90.00	270.41	7,010.0	1,422.8	-1,641.1	1,422.8	0.00	0.00	0.00	
8,400.0	90.00	270.41	7,010.0	1,423.5	-1,741.1	1,423.5	0.00	0.00	0.00	
8,500.0	90.00	270.41	7,010.0	1,424.3	-1,841.1	1,424.3	0.00	0.00	0.00	
8,600.0	90.00	270.41	7,010.0	1,425.0	-1,941.1	1,425.0	0.00	0.00	0.00	
8,700.0	90.00	270.41	7,010.0	1,425.7	-2,041.1	1,425.7	0.00	0.00	0.00	
8,800.0	90.00	270.41	7,010.0	1,426.4	-2,141.1	1,426.4	0.00	0.00	0.00	
8,900.0	90.00	270.41	7,010.0	1,427.1	-2,241.1	1,427.1	0.00	0.00	0.00	
9,000.0	90.00	270.41	7,010.0	1,427.8	-2,341.1	1,427.8	0.00	0.00	0.00	
9,100.0	90.00	270.41	7,010.0	1,428.5	-2,441.1	1,428.5	0.00	0.00	0.00	
9,200.0	90.00	270.41	7,010.0	1,429.2	-2,541.1	1,429.2	0.00	0.00	0.00	
9,300.0	90.00	270.41	7,010.0	1,429.9	-2,641.1	1,429.9	0.00	0.00	0.00	
9,400.0	90.00	270.41	7,010.0	1,430.6	-2,741.1	1,430.6	0.00	0.00	0.00	
9,500.0	90.00	270.41	7,010.0	1,431.3	-2,841.1	1,431.3	0.00	0.00	0.00	
9,600.0	90.00	270.41	7,010.0	1,432.0	-2,941.0	1,432.0	0.00	0.00	0.00	
9,700.0	90.00	270.41	7,010.0	1,432.7	-3,041.0	1,432.7	0.00	0.00	0.00	
9,800.0	90.00	270.41	7,010.0	1,433.5	-3,141.0	1,433.5	0.00	0.00	0.00	
9,900.0	90.00	270.41	7,010.0	1,434.2	-3,241.0	1,434.2	0.00	0.00	0.00	
10,000.0	90.00	270.41	7,010.0	1,434.9	-3,341.0	1,434.9	0.00	0.00	0.00	
10,100.0	90.00	270.41	7,010.0	1,435.6	-3,441.0	1,435.6	0.00	0.00	0.00	
10,200.0	90.00	270.41	7,010.0	1,436.3	-3,541.0	1,436.3	0.00	0.00	0.00	
10,300.0	90.00	270.41	7,010.0	1,437.0	-3,641.0	1,437.0	0.00	0.00	0.00	
10,400.0	90.00	270.41	7,010.0	1,437.7	-3,741.0	1,437.7	0.00	0.00	0.00	
10,500.0	90.00	270.41	7,010.0	1,438.4	-3,841.0	1,438.4	0.00	0.00	0.00	
10,600.0	90.00	270.41	7,010.0	1,439.1	-3,941.0	1,439.1	0.00	0.00	0.00	
10,700.0	90.00	270.41	7,010.0	1,439.8	-4,041.0	1,439.8	0.00	0.00	0.00	
10,800.0	90.00	270.41	7,010.0	1,440.5	-4,141.0	1,440.5	0.00	0.00	0.00	
10,900.0	90.00	270.41	7,010.0	1,441.2	-4,241.0	1,441.2	0.00	0.00	0.00	
11,000.0	90.00	270.41	7,010.0	1,442.0	-4,341.0	1,442.0	0.00	0.00	0.00	
11,100.0	90.00	270.41	7,010.0	1,442.7	-4,441.0	1,442.7	0.00	0.00	0.00	
11,200.0	90.00	270.41	7,010.0	1,443.4	-4,541.0	1,443.4	0.00	0.00	0.00	
11,300.0	90.00	270.41	7,010.0	1,444.1	-4,641.0	1,444.1	0.00	0.00	0.00	
11,400.0	90.00	270.41	7,010.0	1,444.8	-4,741.0	1,444.8	0.00	0.00	0.00	
11,500.0	90.00	270.41	7,010.0	1,445.5	-4,841.0	1,445.5	0.00	0.00	0.00	
11,600.0	90.00	270.41	7,010.0	1,446.2	-4,941.0	1,446.2	0.00	0.00	0.00	
11,700.0	90.00	270.41	7,010.0	1,446.9	-5,041.0	1,446.9	0.00	0.00	0.00	
11,800.0	90.00	270.41	7,010.0	1,447.6	-5,141.0	1,447.6	0.00	0.00	0.00	
11,900.0	90.00	270.41	7,010.0	1,448.3	-5,241.0	1,448.3	0.00	0.00	0.00	
12,000.0	90.00	270.41	7,010.0	1,449.0	-5,341.0	1,449.0	0.00	0.00	0.00	
12,100.0	90.00	270.41	7,010.0	1,449.7	-5,441.0	1,449.7	0.00	0.00	0.00	
12,200.0	90.00	270.41	7,010.0	1,450.5	-5,541.0	1,450.5	0.00	0.00	0.00	
12,300.0	90.00	270.41	7,010.0	1,451.2	-5,641.0	1,451.2	0.00	0.00	0.00	
12,400.0	90.00	270.41	7,010.0	1,451.9	-5,741.0	1,451.9	0.00	0.00	0.00	
12,500.0	90.00	270.41	7,010.0	1,452.6	-5,841.0	1,452.6	0.00	0.00	0.00	
12,600.0	90.00	270.41	7,010.0	1,453.3	-5,941.0	1,453.3	0.00	0.00	0.00	
12,700.0	90.00	270.41	7,010.0	1,454.0	-6,041.0	1,454.0	0.00	0.00	0.00	
19,826.8	90.00	270.41	7,010.0	1,504.4	-13,167.6	1,504.4	0.00	0.00	0.00	
TD at 19826.8' MD										

Planning Report

Database:	EDT_32Bit_ODBC	Local Co-ordinate Reference:	Well AD-J EVANS 4-20-24
Company:	EXTRACTION OIL & GAS	TVD Reference:	KB-EST @ 4654.0usft (Original Well Elev)
Project:	Weld County	MD Reference:	KB-EST @ 4654.0usft (Original Well Elev)
Site:	Sec 21-T5N-R65W	North Reference:	True
Well:	AD-J EVANS 4-20-24	Survey Calculation Method:	Minimum Curvature
Wellbore:	ORIGINAL WELLBORE		
Design:	PROPOSAL #1		

Formations					
Measured Depth (usft)	Vertical Depth (usft)	Name	Lithology	Dip (°)	Dip Direction (°)
3,877.4	3,800.0	PARKMAN			
4,646.2	4,550.0	SUSSEX			
5,169.1	5,060.0	SHANNON			
7,072.6	6,865.0	SHARON SPRINGS			
7,112.3	6,890.0	NIOBRARA			

Plan Annotations				
Measured Depth (usft)	Vertical Depth (usft)	Local Coordinates		Comment
		+N/-S (usft)	+E/-W (usft)	
300.0	300.0	0.0	0.0	Build 2°/100'
935.9	930.7	68.9	-14.0	Hold 12.72° Inc
6,620.7	6,476.0	1,295.2	-264.2	KOP, Build 10°/100'
7,494.6	7,010.0	1,417.1	-835.7	LP @ 90° Inc, 270.41° Azm Hold
19,826.8	7,010.0	1,504.4	-13,167.6	TD at 19826.8' MD