



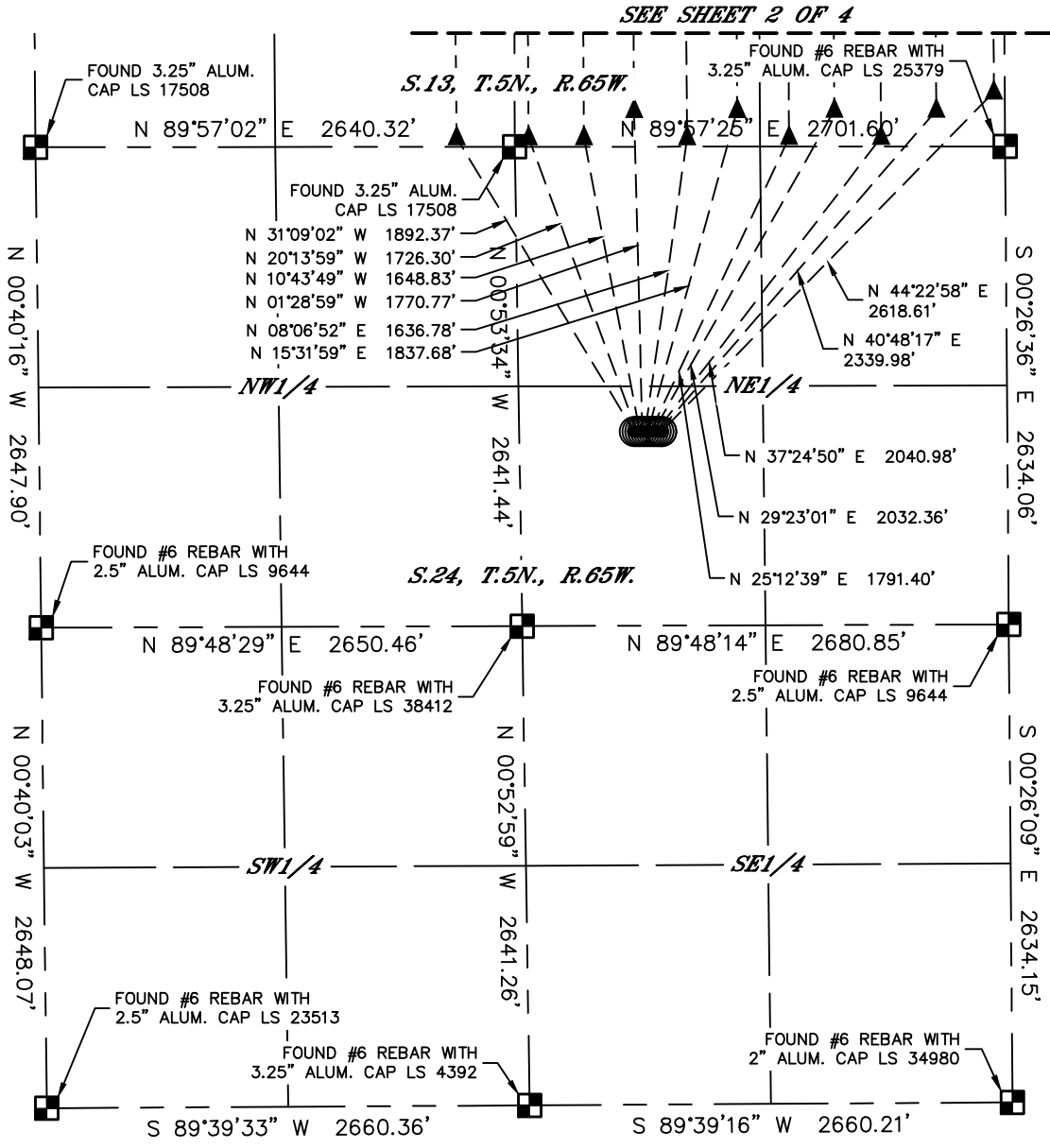
Lat40°, Inc. 6250 W. 10th Street, Unit 2, Greeley, CO 970-515-5294

MULTI-WELL PLAN

SANDIN FARMS 5N65W24N PAD

THIS MAP DOES NOT REPRESENT A BOUNDARY SURVEY

SECTION: 24
TOWNSHIP: 5N
RANGE: 65W
6TH. P.M.
WELD COUNTY, CO

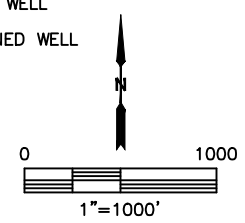


SEE SHEET 2 OF 4

S.13, T.5N., R.65W.

S.24, T.5N., R.65W.

- LEGEND
- = ALIQUOT MONUMENT AS DESCRIBED
 - = CALCULATED POSITION
 - = SURFACE HOLE LOCATION (SHL)
 - ▲ = ENTRY POINT LOCATION (EP)
 - _{BH} = BOTTOM HOLE LOCATION (BHL)
 - ⊙ = EXISTING WELL
 - ⊙ = ABANDONED WELL



| # | WELL NAME | BHL FOOTAGE | | | BHL LAT ° | BHL LONG ° | BHL S-T-R | |
|----|----------------|-------------|-----|------|-----------|------------|------------|---------|
| 1 | SANDIN 24V-401 | 50 | FNL | 60 | FEL | 40.42067 | -104.60198 | 12-5-65 |
| 2 | SANDIN 24V-341 | 50 | FNL | 378 | FEL | 40.42070 | -104.60312 | 12-5-65 |
| 3 | SANDIN 24C-221 | 50 | FNL | 683 | FEL | 40.42073 | -104.60421 | 12-5-65 |
| 4 | SANDIN 24C-321 | 50 | FNL | 940 | FEL | 40.42075 | -104.60514 | 12-5-65 |
| 5 | SANDIN 24C-201 | 50 | FNL | 1190 | FEL | 40.42078 | -104.60603 | 12-5-65 |
| 6 | SANDIN 24C-301 | 50 | FNL | 1475 | FEL | 40.42080 | -104.60706 | 12-5-65 |
| 7 | SANDIN 24C-241 | 50 | FNL | 1752 | FEL | 40.42083 | -104.60805 | 12-5-65 |
| 8 | SANDIN 24N-321 | 50 | FNL | 2043 | FEL | 40.42086 | -104.60910 | 12-5-65 |
| 9 | SANDIN 24N-221 | 50 | FNL | 2320 | FEL | 40.42088 | -104.61009 | 12-5-65 |
| 10 | SANDIN 24N-301 | 50 | FNL | 2625 | FEL | 40.42091 | -104.61119 | 12-5-65 |
| 11 | SANDIN 24N-241 | 50 | FNL | 2320 | FWL | 40.42095 | -104.61273 | 12-5-65 |



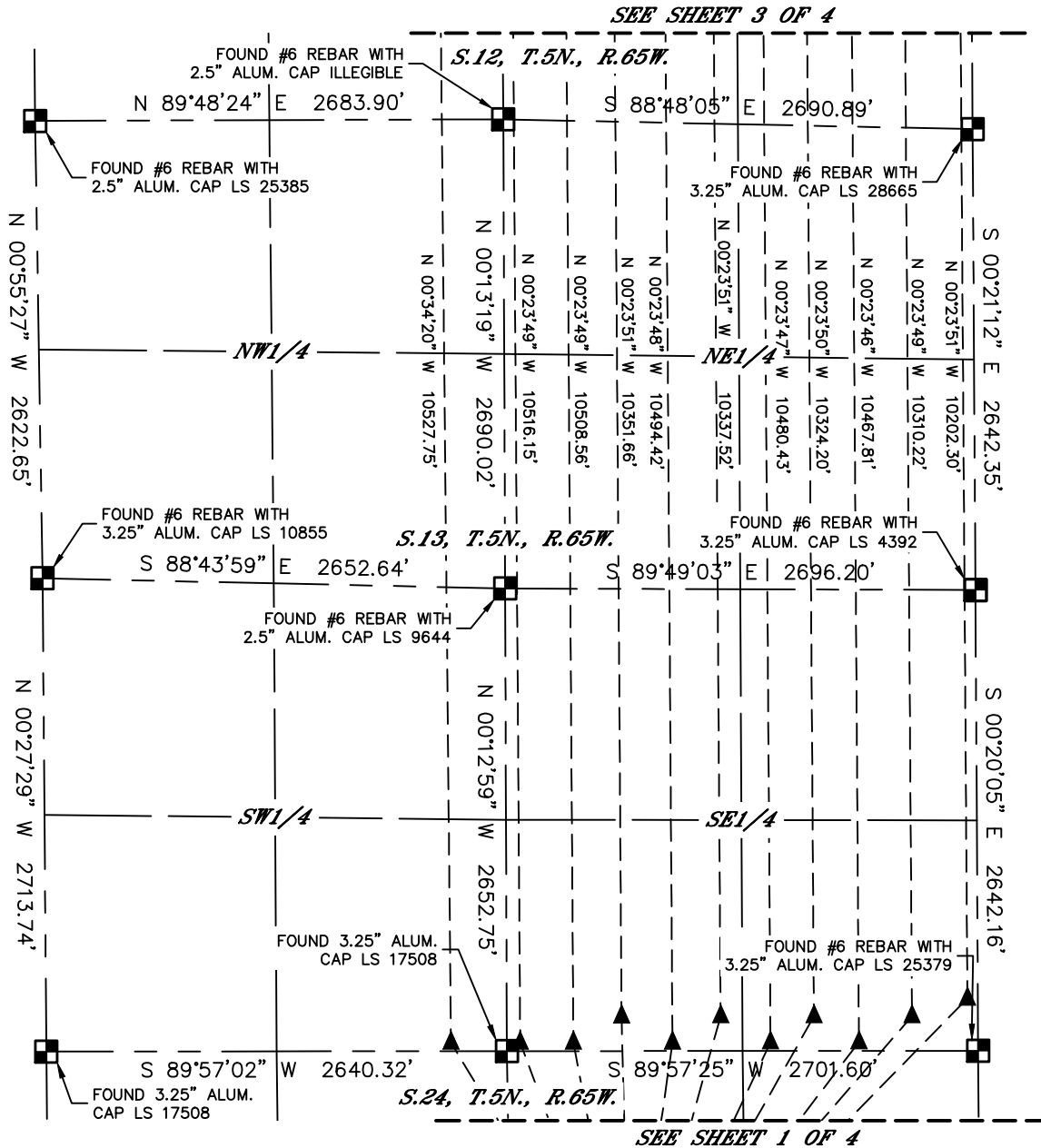
Lat40°, Inc. 6250 W. 10th Street, Unit 2, Greeley, CO 970-515-5294

MULTI-WELL PLAN

SANDIN FARMS 5N65W24N PAD

THIS MAP DOES NOT REPRESENT A BOUNDARY SURVEY

SECTION: 24
TOWNSHIP: 5N
RANGE: 65W
6TH. P.M.
WELD COUNTY, CO

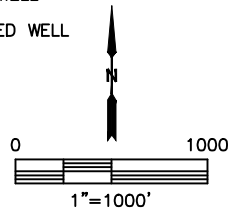


SEE SHEET 3 OF 4

SEE SHEET 1 OF 4

LEGEND

- = ALIQUOT MONUMENT AS DESCRIBED
- = CALCULATED POSITION
- = SURFACE HOLE LOCATION (SHL)
- ▲ = ENTRY POINT LOCATION (EP)
- _{BH} = BOTTOM HOLE LOCATION (BHL)
- ⊙ = EXISTING WELL
- ⊙_{AB} = ABANDONED WELL



| # | WELL NAME | BHL FOOTAGE | | | BHL LAT ° | BHL LONG ° | BHL S-T-R | |
|----|----------------|-------------|-----|------|-----------|------------|------------|---------|
| 1 | SANDIN 24V-401 | 50 | FNL | 60 | FEL | 40.42067 | -104.60198 | 12-5-65 |
| 2 | SANDIN 24V-341 | 50 | FNL | 378 | FEL | 40.42070 | -104.60312 | 12-5-65 |
| 3 | SANDIN 24C-221 | 50 | FNL | 683 | FEL | 40.42073 | -104.60421 | 12-5-65 |
| 4 | SANDIN 24C-321 | 50 | FNL | 940 | FEL | 40.42075 | -104.60514 | 12-5-65 |
| 5 | SANDIN 24C-201 | 50 | FNL | 1190 | FEL | 40.42078 | -104.60603 | 12-5-65 |
| 6 | SANDIN 24C-301 | 50 | FNL | 1475 | FEL | 40.42080 | -104.60706 | 12-5-65 |
| 7 | SANDIN 24C-241 | 50 | FNL | 1752 | FEL | 40.42083 | -104.60805 | 12-5-65 |
| 8 | SANDIN 24N-321 | 50 | FNL | 2043 | FEL | 40.42086 | -104.60910 | 12-5-65 |
| 9 | SANDIN 24N-221 | 50 | FNL | 2320 | FEL | 40.42088 | -104.61009 | 12-5-65 |
| 10 | SANDIN 24N-301 | 50 | FNL | 2625 | FEL | 40.42091 | -104.61119 | 12-5-65 |
| 11 | SANDIN 24N-241 | 50 | FNL | 2320 | FWL | 40.42095 | -104.61273 | 12-5-65 |



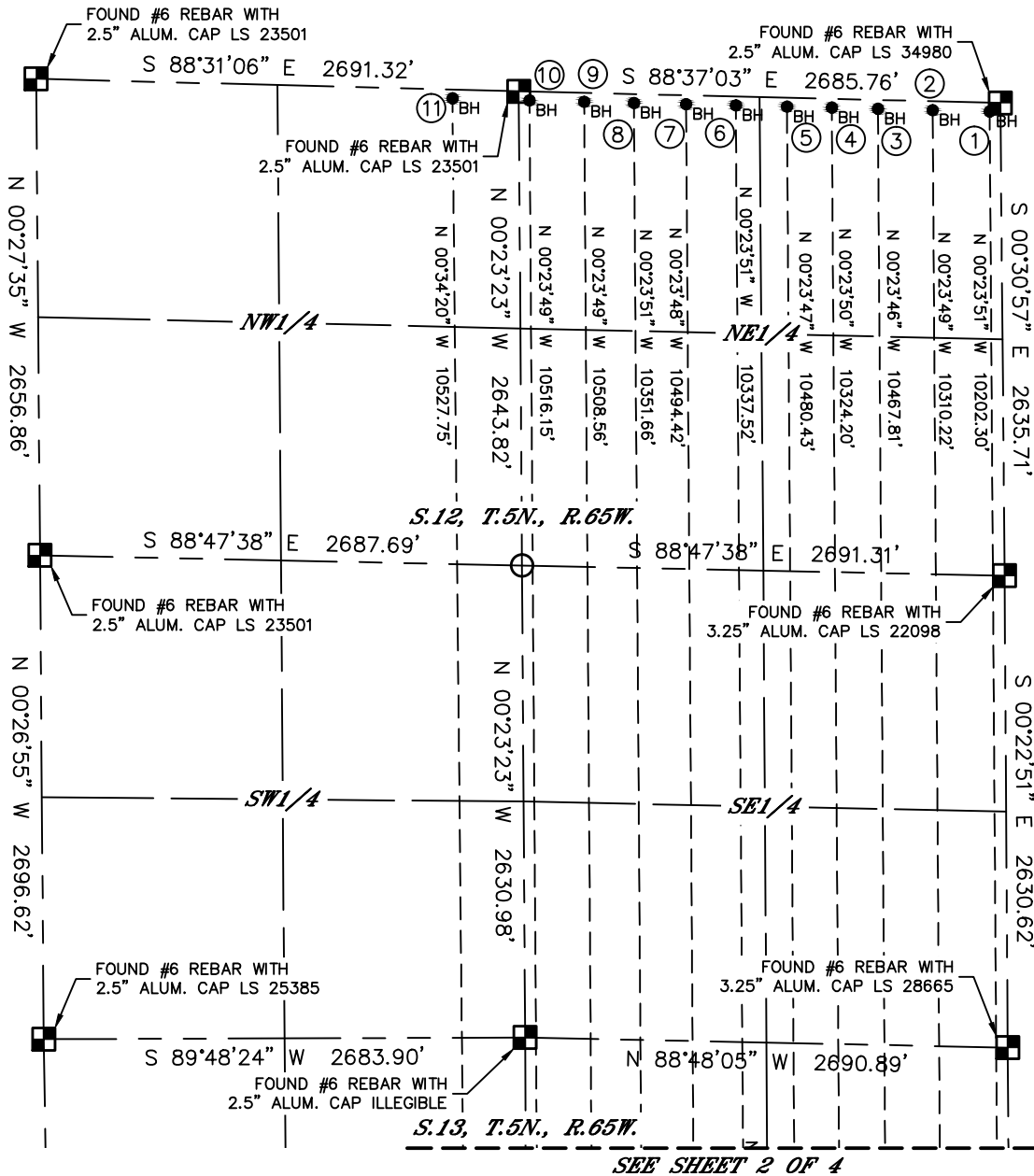
Lat40°, Inc. 6250 W. 10th Street, Unit 2, Greeley, CO 970-515-5294

MULTI-WELL PLAN

SANDIN FARMS 5N65W24N PAD

THIS MAP DOES NOT REPRESENT A BOUNDARY SURVEY

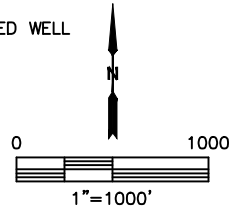
SECTION: 24
TOWNSHIP: 5N
RANGE: 65W
6TH. P.M.
WELD COUNTY, CO



SEE SHEET 2 OF 4

LEGEND

- = ALIQUOT MONUMENT AS DESCRIBED
- = CALCULATED POSITION
- = SURFACE HOLE LOCATION (SHL)
- ▲ = ENTRY POINT LOCATION (EP)
- _{BH} = BOTTOM HOLE LOCATION (BHL)
- ⊙ = EXISTING WELL
- ⊙ = ABANDONED WELL



| # | WELL NAME | BHL FOOTAGE | | | BHL LAT ° | BHL LONG ° | BHL S-T-R | |
|----|----------------|-------------|-----|------|-----------|------------|------------|---------|
| 1 | SANDIN 24V-401 | 50 | FNL | 60 | FEL | 40.42067 | -104.60198 | 12-5-65 |
| 2 | SANDIN 24V-341 | 50 | FNL | 378 | FEL | 40.42070 | -104.60312 | 12-5-65 |
| 3 | SANDIN 24C-221 | 50 | FNL | 683 | FEL | 40.42073 | -104.60421 | 12-5-65 |
| 4 | SANDIN 24C-321 | 50 | FNL | 940 | FEL | 40.42075 | -104.60514 | 12-5-65 |
| 5 | SANDIN 24C-201 | 50 | FNL | 1190 | FEL | 40.42078 | -104.60603 | 12-5-65 |
| 6 | SANDIN 24C-301 | 50 | FNL | 1475 | FEL | 40.42080 | -104.60706 | 12-5-65 |
| 7 | SANDIN 24C-241 | 50 | FNL | 1752 | FEL | 40.42083 | -104.60805 | 12-5-65 |
| 8 | SANDIN 24N-321 | 50 | FNL | 2043 | FEL | 40.42086 | -104.60910 | 12-5-65 |
| 9 | SANDIN 24N-221 | 50 | FNL | 2320 | FEL | 40.42088 | -104.61009 | 12-5-65 |
| 10 | SANDIN 24N-301 | 50 | FNL | 2625 | FEL | 40.42091 | -104.61119 | 12-5-65 |
| 11 | SANDIN 24N-241 | 50 | FNL | 2320 | FWL | 40.42095 | -104.61273 | 12-5-65 |



Lat40°, Inc. 6250 W. 10th Street, Unit 2, Greeley, CO 970-515-5294

MULTI-WELL PLAN

SANDIN FARMS 5N65W24N PAD

SECTION: 24
TOWNSHIP: 5N
RANGE: 65W
6TH. P.M.
WELD COUNTY, CO

