

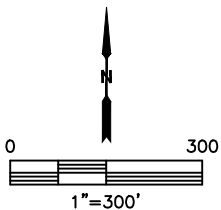
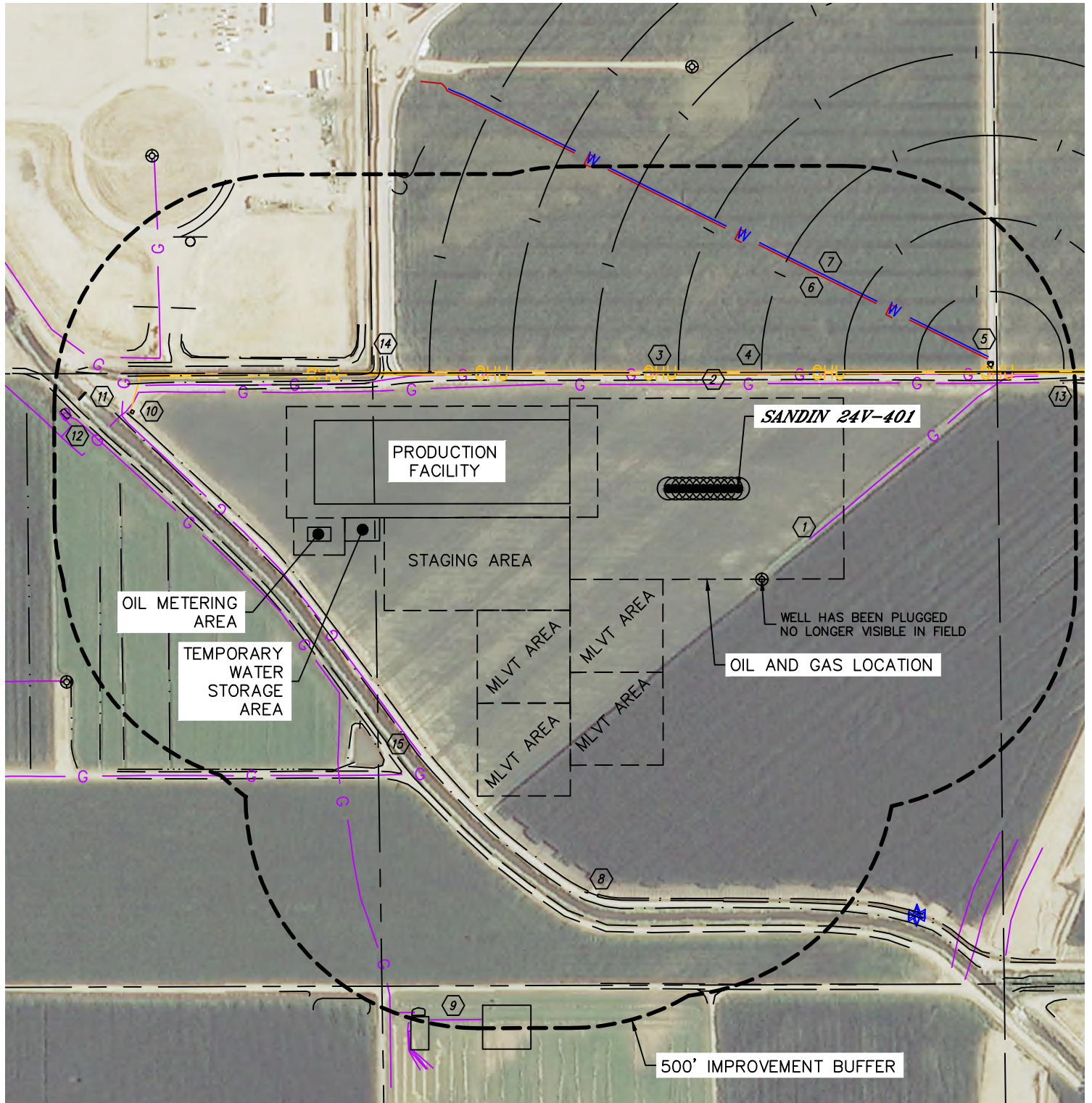


Lat40°, Inc. 6250 W. 10th Street, Unit 2, Greeley, CO 970-515-5294

LOCATION DRAWING

SANDIN FARMS 5N65W24N PAD

SECTION: 24
TOWNSHIP: 5N
RANGE: 65W
6TH. P.M.
WELD COUNTY, CO





Lat40°, Inc. 6250 W. 10th Street, Unit 2, Greeley, CO 970-515-5294

LOCATION DRAWING

SANDIN FARMS 5N65W24N PAD

SECTION: 24
TOWNSHIP: 5N
RANGE: 65W
6TH. P.M.
WELD COUNTY, CO

IMPROVEMENTS:

(MEASURED FROM THE PROPOSED SANDIN 24V-401 WELL LOCATION)

- ① NO BUILDING UNITS WITHIN 500' IMPROVEMENT BUFFER
- ② NO BUILDINGS WITHIN 500' IMPROVEMENT BUFFER
- ③ GAS LINE LOCATES 182' SE, 226' & 246' N, 891' & 965' SW, 1277' NW
- ④ ROAD/EDGE OF GRAVEL 235' N, 940' & 1068' S, 963' SW, 864' & 1266' NW
- ⑤ OVERHEAD UTILITY 247' N, 1319' NW
- ⑥ IRRIGATION PIVOT TRACK 260' N
- ⑦ IRRIGATION CENTER PIVOT 606' NE
- ⑧ ELECTRIC LINE LOCATES 490' NE
- ⑨ WATERLINE LOCATES 495' NE
- ⑩ PIPE 927', 956' & 1015' SW, 1084' S, 1210', 1232' & 1408' NW
- ⑪ PRODUCTION EQUIPMENT (PDC) 1199' & 1310' SW
- ⑫ IRRIGATION PUMP SHED 1311' NW
- ⑬ FOOT BRIDGE 1420' NW
- ⑭ LAUNCHER/RECEIVER 1446' NW
- ⑮ POND 725' NE, 954', 1360' & 1424' SW, 878', 961' 978' & 1316' NW
- ⑯ DITCH 812' NW, 882' S, 877' & 1060' SW, 1231' W
- ⑰ LATHAM DITCH 896' SW