

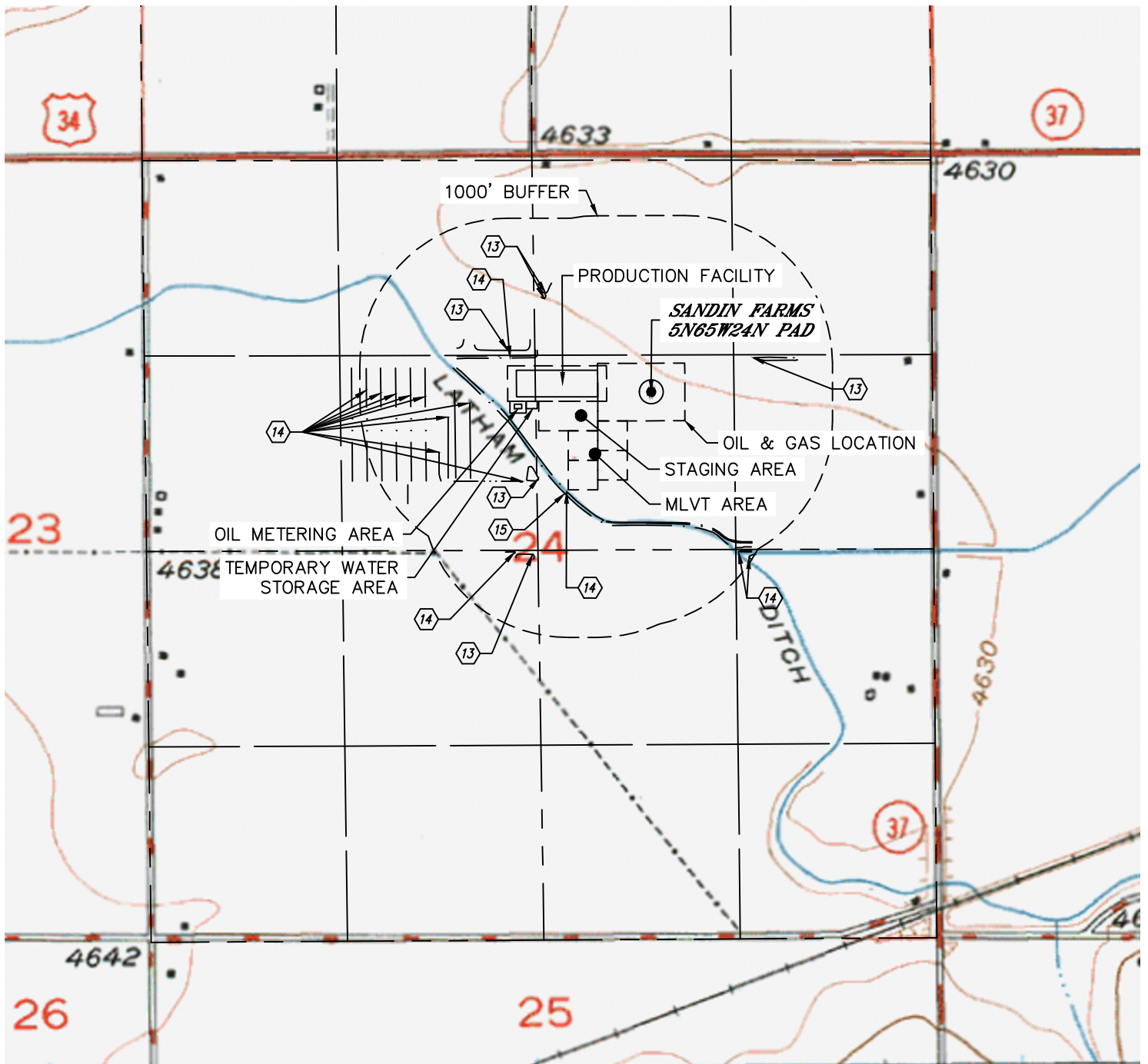


Lat40°, Inc. 6250 W. 10th Street, Unit 2, Greeley, CO 970-515-5294

# HYDROLOGY MAP

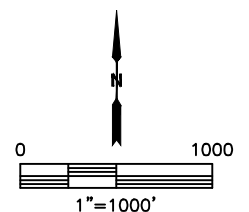
## SANDIN FARMS 5N65W24N PAD

SECTION: 24  
TOWNSHIP: 5N  
RANGE: 65W  
6TH. P.M.  
WELD COUNTY, CO



DISTANCES MEASURED FROM THE EDGE OF THE OIL AND GAS LOCATION.

- ⑬ POND 106', 457' & 493' N, 463' NE, 499' SW, 201' W
- ⑭ DITCH 16', 416', 548' & 556' SW, 54' N, 256', 310', 359', 558', 658', 757', 858' & 956' W
- ⑮ LATHAM DITCH 35' SW



NEAREST DOWN GRADIENT SURFACE WATER: POND 463' NE

DATE: 12/21/2016  
PROJECT#: 2016077