



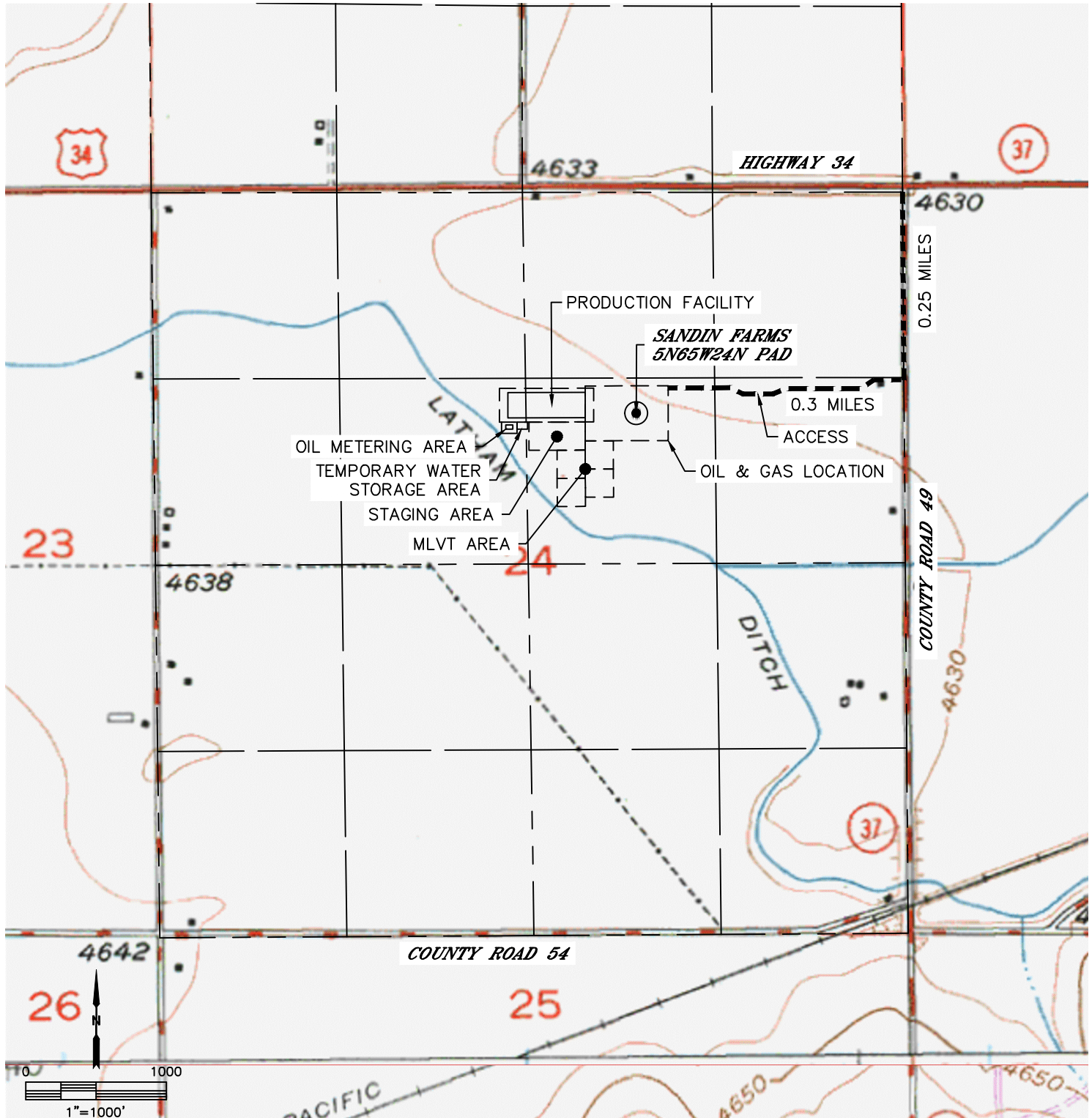
Lat40°, Inc. 6250 W. 10th Street, Unit 2, Greeley, CO 970-515-5294

ACCESS ROAD MAP

SANDIN FARMS 5N65W24N PAD

SECTION: 24
TOWNSHIP: 5N
RANGE: 65W
6TH. P.M.
WELD COUNTY, CO

DRIVING DIRECTIONS TO SANDIN FARMS 5N65W24N PAD
FROM THE INTERSECTION OF HIGHWAY 34 AND COUNTY ROAD 49 DRIVE SOUTH ON COUNTY ROAD 49
FOR 0.25 MILES TO AN EXISTING ACCESS TO THE WEST. DRIVE WEST FOR 0.3 MILES TO THE
PROPOSED DRILL PAD





Lat40°, Inc. 6250 W. 10th Street, Unit 2, Greeley, CO 970-515-5294

ACCESS ROAD MAP

SANDIN FARMS 5N65W24N PAD

SECTION: 24
TOWNSHIP: 5N
RANGE: 65W
6TH. P.M.
WELD COUNTY, CO

