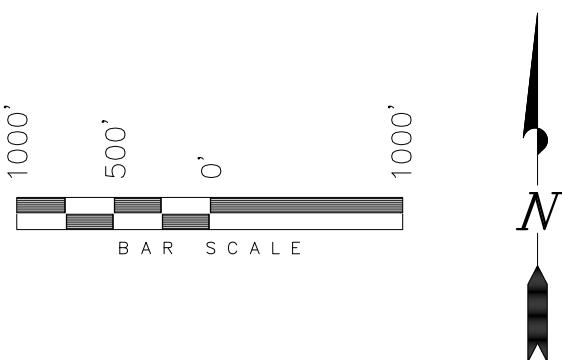
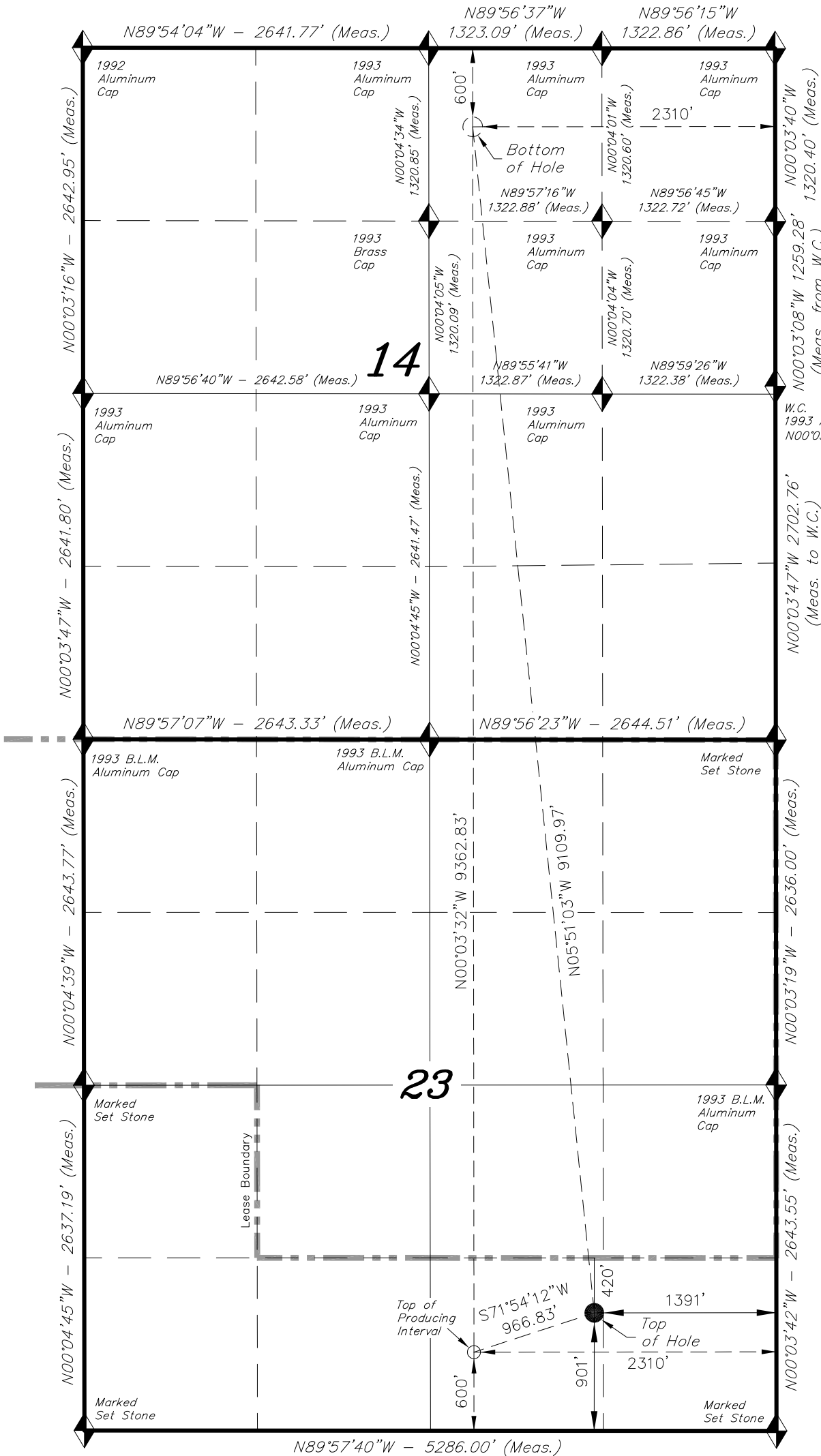


WELL LOCATION, BHR FED  
023-14-397-4RH, LOCATED AS SHOWN IN  
THE SW 1/4 SE 1/4 OF SECTION 23, T3N,  
R97W, 6TH P.M. RIO BLANCO COUNTY,  
COLORADO.

TARGET BOTTOM HOLE, BHR FED  
023-14-397-4RH, LOCATED AS SHOWN IN  
THE NW 1/4 NE 1/4 OF SECTION 14, T3N,  
R97W, 6TH P.M. RIO BLANCO COUNTY,  
COLORADO.

T3N, R97W, 6th P.M.



- NOTES:**
1. Well footages are measured at right angles to the Section Lines.
  2. Bearings are based on Global Positioning Satellite observations.
  3. G.P.S. Operator: K. Stewart, (PDOP) = 1.3

**WELL LOCATION:**  
**BHR FED 023-14-397-4RH**  
ELEV. GRADED GROUND = 6023'

◆ = SECTION CORNERS LOCATED

THIS IS TO CERTIFY THAT THE ABOVE PLAT WAS  
PREPARED FROM FIELD NOTES OF ACTUAL SURVEYS  
MADE BY ME OR UNDER MY SUPERVISION AND THAT  
THE SAME ARE TRUE AND CORRECT TO THE BEST  
OF MY KNOWLEDGE AND BELIEF.

TRI STATE LAND SURVEYING & CONSULTING  
180 NORTH VERNAL AVE. - VERNAL, UTAH 84078  
(435) 781-2501

DATE SURVEYED: 01-20-17  
DATE DRAWN: 11-19-14  
REVISED: 01-12-17 F.T.M.

SURVEYED BY: K.G.S.  
DRAWN BY: M.W.  
SCALE: 1" = 1000'

SHEET 1b

BASIS OF ELEV;  
U.S.G.S. 7-1/2 min QUAD  
(Indian Valley)

NAD 83 (SURFACE LOCATION)	
LATITUDE	= 40°12'34.75" (40.209653°)
LONGITUDE	= 108°14'27.74" (108.241040°)
NAD 27 (SURFACE LOCATION)	
LATITUDE	= 40°12'34.86" (40.209683°)
LONGITUDE	= 108°14'25.43" (108.240397°)
NAD 83 (TOP OF PROD. INTERVAL)	
LATITUDE	= 40°12'31.79" (40.208830°)
LONGITUDE	= 108°14'39.59" (108.244330°)
NAD 27 (TOP OF PROD. INTERVAL)	
LATITUDE	= 40°12'31.90" (40.208860°)
LONGITUDE	= 108°14'37.27" (108.243687°)
NAD 83 (BOTTOM HOLE LOCATION)	
LATITUDE	= 40°14'04.29" (40.234524°)
LONGITUDE	= 108°14'39.62" (108.244340°)
NAD 27 (BOTTOM HOLE LOCATION)	
LATITUDE	= 40°14'04.40" (40.234554°)
LONGITUDE	= 108°14'37.31" (108.243696°)