



Kerr-McGee Oil & Gas Onshore LP

A subsidiary of Anadarko Petroleum Corporation

1099 18th Street
Denver, CO 80202
720-929-6000

February 7, 2017

Matt Lepore
Director, Colorado Oil and Gas Conservation Commission
Department of Natural Resources
The Chancery Building
1120 Lincoln Street, Suite 801
Denver, CO 80203

Re: **30 Day Certification Letter - 318A.e**
RW 28C-5HZ (Doc No. 401203306)
Township 3 North, Range 65 West
Section 29: SESW
Unit Acreage: 560 acres
Unit Spacing: 03N65W Sec 29: E2SW, W2SE
03N65W Sec 32: E2W2, W2E2
02N65W Sec 5: NENW, NWNE
Weld County, Colorado

Dear Director Lepore:

Kerr McGee Oil and Gas Onshore LP (“KMG”) hereby certifies that KMG owns one hundred percent (100%) of the leasehold interest in the mineral rights in the proposed spacing unit. KMG hereby respectfully requests approval of this boundary well.

If you have any questions or issues regarding this permit, please contact our office.

Sincerely,

Kerr-McGee Oil and Gas Onshore LP

A handwritten signature in black ink that reads "Shayelyn Marshall".

Shayelyn Marshall
Regulatory Analyst I

Enclosure

PROPOSED SPACING UNIT

T3N, R65W

N. 1/4 COR.
SEC. 29, T3N, R65W
FOUND 3 1/4" ALUM. CAP
L.S. NO. 33642

NW. COR.
SEC. 29, T3N, R65W
FOUND 3 1/4" ALUM. CAP
W.C. 30' WEST
OF TRUE CORNER
P.L.S. NO. 10855

NE. COR.
SEC. 29, T3N, R65W
FOUND 2 1/2" ALUM. CAP
L.S. NO. 23501

S 89°03'04" W 2635.70' (M)

S 89°03'18" W 2635.85' (M)

N 00°42'56" W 2637.66' (M)

SURFACE LOCATION: NAD 83
GROUND ELEVATION= 4883.4'
LATITUDE= 40.190388°
LONGITUDE= -104.690250°
LATITUDE= 40°11'25.396"
LONGITUDE= -104°41'24.899"
HEEL LOCATION: NAD 83
LATITUDE= 40.192018°
LONGITUDE= -104.688623°
LATITUDE= 40°11'31.264"
LONGITUDE= -104°41'19.042"
BOTTOM HOLE LOCATION: NAD 83
LATITUDE= 40.173651°
LONGITUDE= -104.688612°
LATITUDE= 40°10'25.144"
LONGITUDE= -104°41'19.003"

31'24" 7°41"



N 00°36'50" W
2646.90' (C)

N 00°30'28" W 2655.98' (M)

W. 1/4 COR.
SEC. 29, T3N, R65W
FOUND 3 1/4" ALUM. CAP
W.C. 30' WEST
OF TRUE CORNER
P.L.S. NO. 10855

29

S 89°15'07" W
2630.97' (C)

S 89°15'07" W
2630.89' (C)

E. 1/4 COR.
SEC. 29, T3N, R65W
FOUND 2 1/2" ALUM. CAP
L.S. NO. 30120

N 00°42'42" W
1306.95' (M)

S. 1/16 COR.
SEC. 29 & SEC. 30,
T3N, R65W
FOUND 3 1/4" ALUM. CAP
L.S. NO. 38285

RW 28C-5HZ
SURFACE LOCATION

N 00°42'46" W
1307.13' (M)

1809'

HEEL LOCATION

N 00°36'50" W
2629.41' (C)

440'

SW. COR.
SEC. 29, T3N, R65W
FOUND 2 1/2" ALUM. CAP
P.L.S. NO. 20671

S 89°35'10" W 2626.49' (M)

S. 1/4 COR.
SEC. 29, T3N, R65W
FOUND 3 1/4" ALUM. CAP
ILLEGIBLE

S 89°33'54" W 2627.17' (M)

SE. COR.
SEC. 29, T3N, R65W
FOUND 2 1/2" ALUM. CAP
L.S. NO. 23501

WELLBORE CONTINUES
INTO SECTION 32

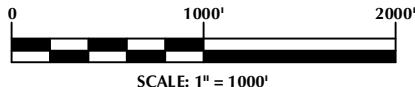
MATCH LINE
SEE SHEET 2

CERTIFICATE OF SURVEYOR:

THIS IS TO CERTIFY THAT THE ABOVE PLAT WAS PREPARED FROM FIELD NOTES OF ACTUAL SURVEY MADE BY ME OR UNDER MY SUPERVISION AND THAT THE SAME ARE TRUE AND CORRECT TO THE BEST OF MY KNOWLEDGE AND BELIEF. THIS CERTIFICATE DOES NOT REPRESENT A LAND SURVEY PLAT OR IMPROVEMENT SURVEY PLAT AS DEFINED BY C.R.S. 38-51-302 AND CANNOT BE RELIED UPON TO DETERMINE OWNERSHIP.

Randall K. French
PROFESSIONAL LAND SURVEYOR
COLORADO REGISTRATION NUMBER 38512
12/23/17

NOTICE:
ACCORDING TO COLORADO STATE LAW YOU MUST COMMENCE ANY LEGAL ACTION BASED UPON ANY DEFECT IN THIS SURVEY WITHIN THREE YEARS AFTER YOU FIRST DISCOVER SUCH DEFECT. IN NO EVENT MAY ANY ACTION BASED UPON ANY DEFECT IN THIS SURVEY BE COMMENCED MORE THAN TEN YEARS FROM THE DATE ON THE CERTIFICATION SHOWN HEREON.



NOTE:
MAGNETIC NORTH IS CURRENT AS OF 12/2/2016.
MAGNETIC NORTH CHANGES WEST 0°06' PER YEAR.

NOTES:

1. ▲ INDICATES SECTION CORNER
2. ● INDICATES CALCULATED CORNER
3. ELEVATION BASED ON NAVD88 (GEOID12B)
4. BASIS OF BEARING DERIVED FROM COLORADO COORDINATE SYSTEM OF 1983 NORTH ZONE.
5. ALL MEASURED DISTANCES ARE GRID.
COMBINED SCALE FACTOR: .99972501 CALCULATED FROM THE W. 1/4 CORNER OF SECTION 29, T3N, R65W
OPERATOR: ROB WILSON / PDOP = 1.2
6. SEE ADDENDUM TO WELL LOCATION CERTIFICATE FOR EXISTING IMPROVEMENTS WITHIN 500' OF THE WELL PAD.
7. WELL FOOTAGES ARE MEASURED AT RIGHT ANGLES TO THE SECTION LINES.
8. THE BOTTOM OF HOLE BEARS S00°33'00"E, 6691' FROM THE HEEL LOCATION.

WELL PAD - RW 29N-5HZ

RW 28C-5HZ
LOCATION CERTIFICATE
440' FSL & 1809' FWL SESW (SURFACE)
1035' FSL & 2265' FWL SESW (HEEL)
LOCATED IN SECTION 29
T3N, R65W, 6TH P.M.
370' FNL & 2310' FWL NENW (BOTTOM)
LOCATED IN SECTION 5
T2N, R65W, 6TH P.M.
WELD COUNTY, COLORADO

**Kerr-McGee Oil &
Gas Onshore L.P.**
1099 18th Street
Denver, Colorado 80202



CONSULTING, LLC

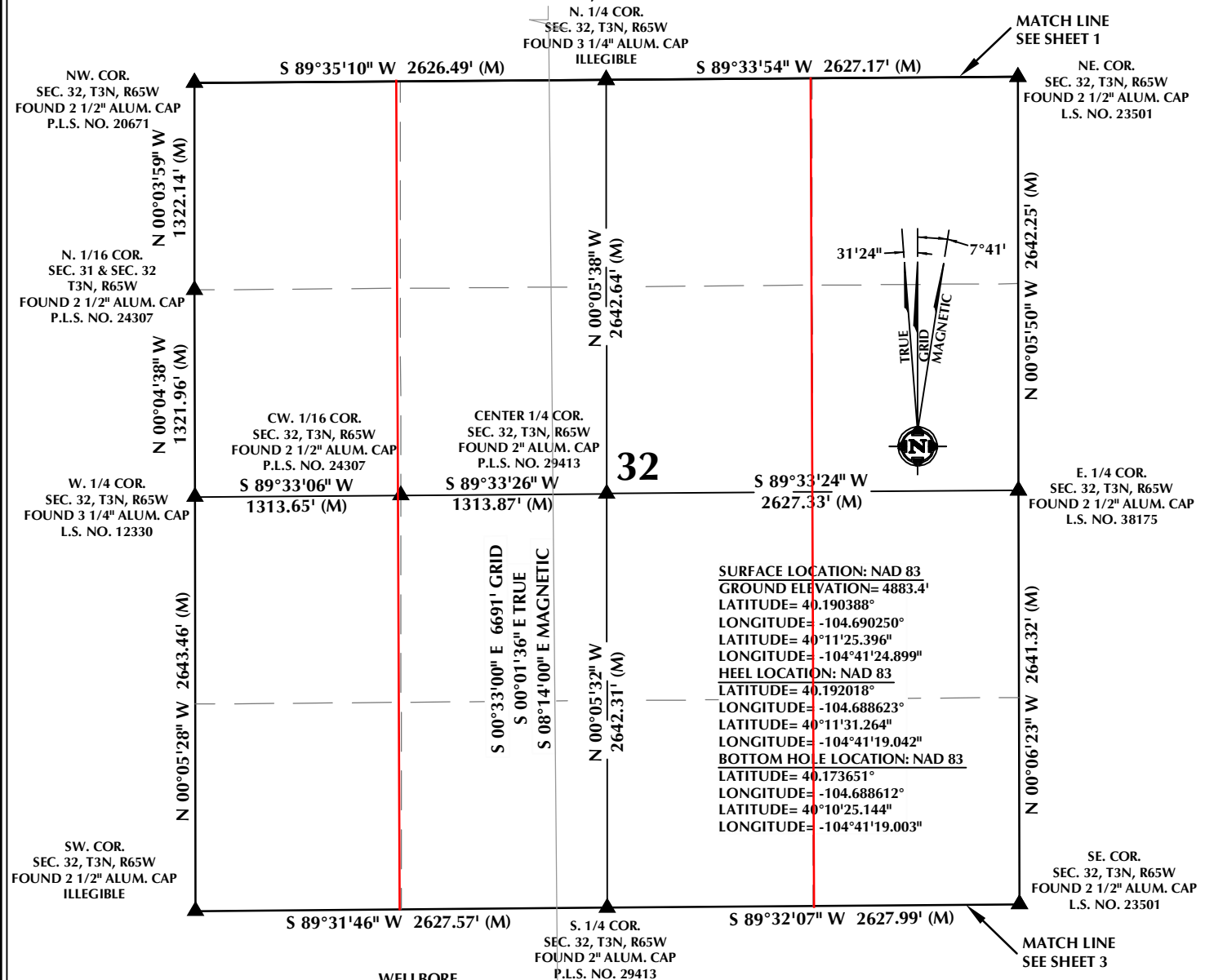
SHERIDAN OFFICE
1095 Saberton Avenue
Sheridan, Wyoming 82801
Phone 307-674-0609

LOVELAND OFFICE
1635 Foxtrail Drive, Suite 204
Loveland, Colorado 80538
Phone 970-776-4331

DRAFTED BY:	LMO	CHECKED BY:	RKF	SHEET NO:	1
DATE DRAFTED:	1/23/17	DATE SURVEYED:	12/1/16		
REVISED:		FILE NAME:	16-147		1 OF 3

PROPOSED SPACING UNIT

T3N, R65W

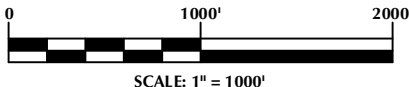


CERTIFICATE OF SURVEYOR:

THIS IS TO CERTIFY THAT THE ABOVE PLAT WAS PREPARED FROM FIELD NOTES OF ACTUAL SURVEY MADE BY ME OR UNDER MY SUPERVISION AND THAT THE SAME ARE TRUE AND CORRECT TO THE BEST OF MY KNOWLEDGE AND BELIEF. THIS CERTIFICATE DOES NOT REPRESENT A LAND SURVEY PLAT OR IMPROVEMENT SURVEY PLAT AS DEFINED BY C.R.S. 38-51-302 AND CANNOT BE RELIED UPON TO DETERMINE OWNERSHIP.

Randall K. French
Randall K. French
 PROFESSIONAL LAND SURVEYOR
 COLORADO REGISTRATION NUMBER 38512

NOTICE: ACCORDING TO COLORADO STATE LAW YOU MUST COMMENCE ANY LEGAL ACTION BASED UPON ANY DEFECT IN THIS SURVEY WITHIN THREE YEARS AFTER YOU FIRST DISCOVER SUCH DEFECT. IN NO EVENT MAY ANY ACTION BASED UPON ANY DEFECT IN THIS SURVEY BE COMMENCED MORE THAN TEN YEARS FROM THE DATE ON THE CERTIFICATION SHOWN HEREON.



NOTE:
 MAGNETIC NORTH IS CURRENT AS OF 12/2/2016.
 MAGNETIC NORTH CHANGES WEST 0°06' PER YEAR.

NOTES:

1. ▲ INDICATES SECTION CORNER
2. ● INDICATES CALCULATED CORNER
3. ELEVATION BASED ON NAVD88 (GEOID12B)
4. BASIS OF BEARING DERIVED FROM COLORADO COORDINATE SYSTEM OF 1983 NORTH ZONE.
5. ALL MEASURED DISTANCES ARE GRID.
 COMBINED SCALE FACTOR: .99972501 CALCULATED FROM THE W. 1/4 CORNER OF SECTION 29, T3N, R65W
 OPERATOR: ROB WILSON / PDOP = 1.2
6. SEE ADDENDUM TO WELL LOCATION CERTIFICATE FOR EXISTING IMPROVEMENTS WITHIN 500' OF THE WELL PAD.
7. WELL FOOTAGES ARE MEASURED AT RIGHT ANGLES TO THE SECTION LINES.
8. THE BOTTOM OF HOLE BEARS S00°33'00"E, 6691' FROM THE HEEL LOCATION.

WELL PAD - RW 29N-5HZ

RW 28C-5HZ
 LOCATION CERTIFICATE
 440' FSL & 1809' FWL SESW (SURFACE)
 1035' FSL & 2265' FWL SESW (HEEL)
 LOCATED IN SECTION 29
 T3N, R65W, 6TH P.M.
 370' FNL & 2310' FWL NENW (BOTTOM)
 LOCATED IN SECTION 5
 T2N, R65W, 6TH P.M.
 WELD COUNTY, COLORADO

**Kerr-McGee Oil &
 Gas Onshore L.P.**
 1099 18th Street
 Denver, Colorado 80202



CONSULTING, LLC

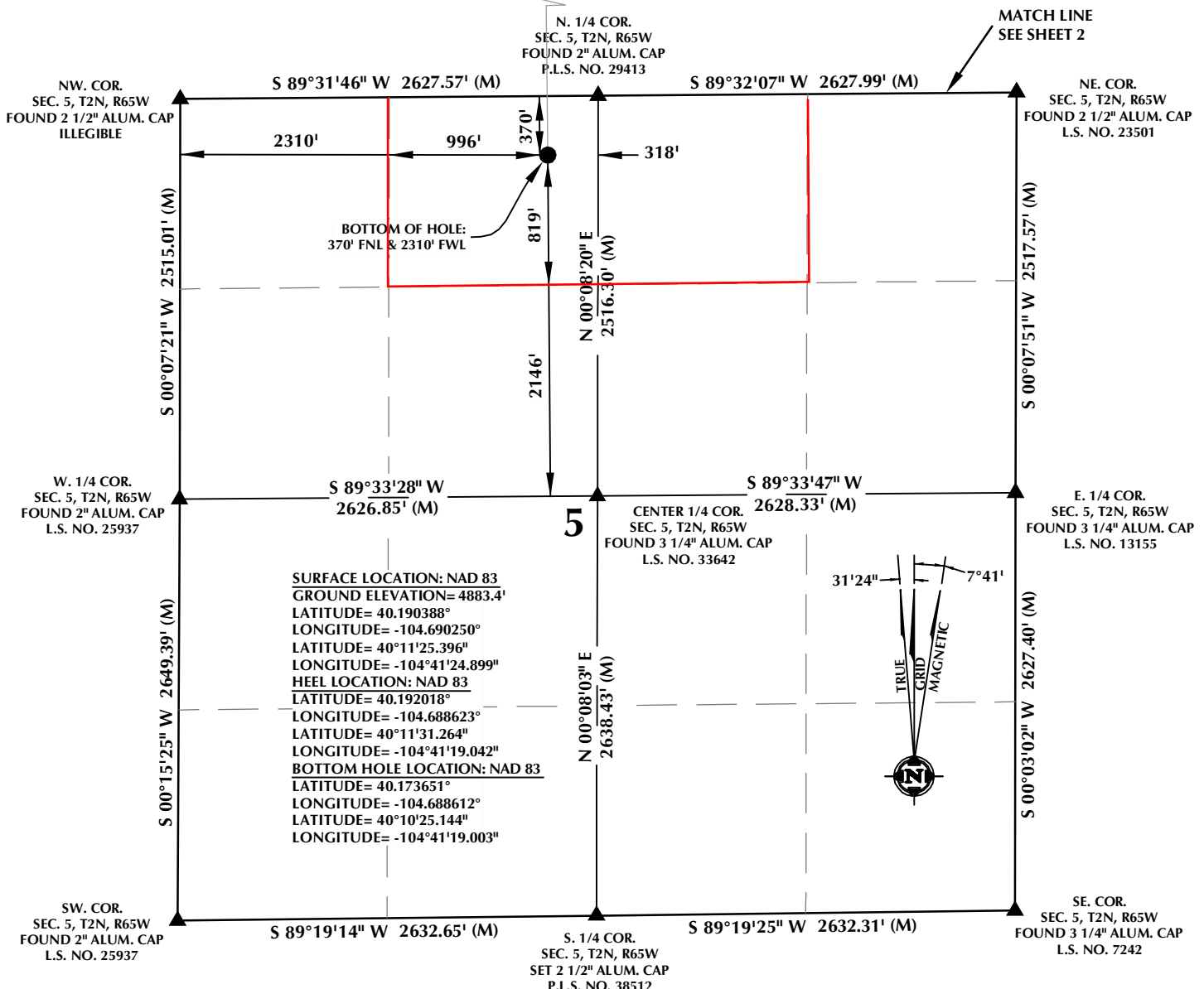
SHERIDAN OFFICE
 1095 Saberton Avenue
 Sheridan, Wyoming 82801
 Phone 307-674-0609

LOVELAND OFFICE
 1635 Foxtrail Drive, Suite 204
 Loveland, Colorado 80538
 Phone 970-776-4331

DRAFTED BY:	LMO	CHECKED BY:	RKF	SHEET NO:
DATE DRAFTED:	1/23/17	DATE SURVEYED:	12/1/16	2
REVISED:		FILE NAME:	16-147	2 OF 3

PROPOSED SPACING UNIT

T2N, R65W



CERTIFICATE OF SURVEYOR:

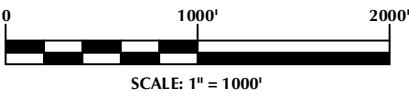
THIS IS TO CERTIFY THAT THE ABOVE PLAT WAS PREPARED FROM FIELD NOTES OF ACTUAL SURVEY MADE BY ME OR UNDER MY SUPERVISION AND THAT THE SAME ARE TRUE AND CORRECT TO THE BEST OF MY KNOWLEDGE AND BELIEF. THIS CERTIFICATE DOES NOT REPRESENT A LAND SURVEY PLAT OR IMPROVEMENT SURVEY PLAT AS DEFINED BY C.R.S. 38-51-302 AND CANNOT BE RELIED UPON TO DETERMINE OWNERSHIP.

Randall K. French
 RANDALL K. FRENCH
 PROFESSIONAL LAND SURVEYOR
 COLORADO REGISTRATION NUMBER 38512

NOTICE:
 ACCORDING TO COLORADO STATE LAW YOU MUST COMMENCE ANY LEGAL ACTION BASED UPON ANY DEFECT IN THIS SURVEY WITHIN THREE YEARS AFTER YOU FIRST DISCOVER SUCH DEFECT. IN NO EVENT MAY ANY ACTION BASED UPON ANY DEFECT IN THIS SURVEY BE COMMENCED MORE THAN TEN YEARS FROM THE DATE ON THE CERTIFICATION SHOWN HEREON.

NOTES:

- ▲ INDICATES SECTION CORNER
- INDICATES CALCULATED CORNER
- ELEVATION BASED ON NAVD88 (GEOID12B)
- BASIS OF BEARING DERIVED FROM COLORADO COORDINATE SYSTEM OF 1983 NORTH ZONE.
- ALL MEASURED DISTANCES ARE GRID.
- COMBINED SCALE FACTOR: .99972501 CALCULATED FROM THE W. 1/4 CORNER OF SECTION 29, T3N, R65W
- OPERATOR: ROB WILSON / PDOP = 1.2
- SEE ADDENDUM TO WELL LOCATION CERTIFICATE FOR EXISTING IMPROVEMENTS WITHIN 500' OF THE WELL PAD.
- WELL FOOTAGES ARE MEASURED AT RIGHT ANGLES TO THE SECTION LINES.
- THE BOTTOM OF HOLE BEARS S00°33'00"E, 6691' FROM THE HEEL LOCATION.



NOTE:
 MAGNETIC NORTH IS CURRENT AS OF 12/2/2016.
 MAGNETIC NORTH CHANGES WEST 0°06' PER YEAR.

WELL PAD - RW 29N-5HZ

RW 28C-5HZ
 LOCATION CERTIFICATE
 440' FSL & 1809' FWL SESW (SURFACE)
 1035' FSL & 2265' FWL SESW (HEEL)
 LOCATED IN SECTION 29
 T3N, R65W, 6TH P.M.
 370' FNL & 2310' FWL NENW (BOTTOM)
 LOCATED IN SECTION 5
 T2N, R65W, 6TH P.M.
 WELD COUNTY, COLORADO

Kerr-McGee Oil & Gas Onshore L.P.
 1099 18th Street
 Denver, Colorado 80202



CONSULTING, LLC

SHERIDAN OFFICE
 1095 Saberton Avenue
 Sheridan, Wyoming 82801
 Phone 307-674-0609

LOVELAND OFFICE
 1635 Foxtrail Drive, Suite 204
 Loveland, Colorado 80538
 Phone 970-776-4331

DRAFTED BY: LMO	CHECKED BY: RKF	SHEET NO: 3 3 OF 3
DATE DRAFTED: 1/23/17	DATE SURVEYED: 12/1/16	
REVISED:	FILE NAME: 16-147	