

# T3N, R65W

N. 1/4 COR.  
SEC. 29, T3N, R65W  
FOUND 3 1/4" ALUM. CAP  
L.S. NO. 33642

NW COR.  
SEC. 29, T3N, R65W  
FOUND 3 1/4" ALUM. CAP  
W.C. 30' WEST  
OF TRUE CORNER  
P.L.S. NO. 10855

NE COR.  
SEC. 29, T3N, R65W  
FOUND 2 1/2" ALUM. CAP  
L.S. NO. 23501

S 89°03'04" W 2635.70' (M)

S 89°03'18" W 2635.85' (M)

N 00°42'56" W 2637.66' (M)

N 00°36'50" W  
2646.90' (C)

N 00°30'28" W 2655.98' (M)

**SURFACE LOCATION: NAD 83**  
GROUND ELEVATION= 4883.4'  
LATITUDE= 40.190388°  
LONGITUDE= -104.690250°  
LATITUDE= 40°11'25.396"  
LONGITUDE= -104°41'24.899"  
**HEEL LOCATION: NAD 83**  
LATITUDE= 40.192018°  
LONGITUDE= -104.688623°  
LATITUDE= 40°11'31.264"  
LONGITUDE= -104°41'19.042"  
**BOTTOM HOLE LOCATION: NAD 83**  
LATITUDE= 40.173651°  
LONGITUDE= -104.688612°  
LATITUDE= 40°10'25.144"  
LONGITUDE= -104°41'19.003"

31'24" 7°41"



W. 1/4 COR.  
SEC. 29, T3N, R65W  
FOUND 3 1/4" ALUM. CAP  
W.C. 30' WEST  
OF TRUE CORNER  
P.L.S. NO. 10855

S 89°15'07" W  
2630.97' (C)

S 89°15'07" W  
2630.89' (C)

E. 1/4 COR.  
SEC. 29, T3N, R65W  
FOUND 2 1/2" ALUM. CAP  
L.S. NO. 30120

N 00°42'42" W  
1306.95' (M)

29

S. 1/16 COR.  
SEC. 29 & SEC. 30,  
T3N, R65W  
FOUND 3 1/4" ALUM. CAP  
L.S. NO. 38285

2265'

N 00°36'50" W  
2629.41' (C)

N 00°31'59" W 2643.78' (M)

**RW 28C-5HZ**  
SURFACE LOCATION

N 00°42'46" W  
1307.13' (M)

1809'

HEEL LOCATION

1035'

SW COR.  
SEC. 29, T3N, R65W  
FOUND 2 1/2" ALUM. CAP  
P.L.S. NO. 20671

S 89°35'10" W 2626.49' (M)

S. 1/4 COR.  
SEC. 29, T3N, R65W  
FOUND 3 1/4" ALUM. CAP  
ILLEGIBLE

S 89°33'54" W 2627.17' (M)

SE COR.  
SEC. 29, T3N, R65W  
FOUND 2 1/2" ALUM. CAP  
L.S. NO. 23501

WELLBORE CONTINUES  
INTO SECTION 32

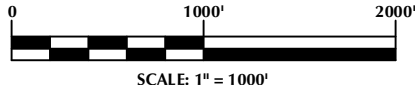
MATCH LINE  
SEE SHEET 2

## CERTIFICATE OF SURVEYOR:

THIS IS TO CERTIFY THAT THE ABOVE PLAT WAS PREPARED FROM FIELD NOTES OF ACTUAL SURVEY MADE BY ME OR UNDER MY SUPERVISION AND THAT THE SAME ARE TRUE AND CORRECT TO THE BEST OF MY KNOWLEDGE AND BELIEF. THIS CERTIFICATE DOES NOT REPRESENT A LAND SURVEY PLAT OR IMPROVEMENT SURVEY PLAT AS DEFINED BY C.R.S. 38-51-302 AND CANNOT BE RELIED UPON TO DETERMINE OWNERSHIP.

*Randall K. French*  
PROFESSIONAL LAND SURVEYOR  
COLORADO REGISTRATION NUMBER 38512  
12/23/17

NOTICE:  
ACCORDING TO COLORADO STATE LAW YOU MUST COMMENCE ANY LEGAL ACTION BASED UPON ANY DEFECT IN THIS SURVEY WITHIN THREE YEARS AFTER YOU FIRST DISCOVER SUCH DEFECT. IN NO EVENT MAY ANY ACTION BASED UPON ANY DEFECT IN THIS SURVEY BE COMMENCED MORE THAN TEN YEARS FROM THE DATE ON THE CERTIFICATION SHOWN HEREON.



NOTE:  
MAGNETIC NORTH IS CURRENT AS OF 12/2/2016.  
MAGNETIC NORTH CHANGES WEST 0°06' PER YEAR.

## NOTES:

- ▲ INDICATES SECTION CORNER
- INDICATES CALCULATED CORNER
- ELEVATION BASED ON NAVD88 (GEOID12B)
- BASIS OF BEARING DERIVED FROM COLORADO COORDINATE SYSTEM OF 1983 NORTH ZONE.
- ALL MEASURED DISTANCES ARE GRID.
- COMBINED SCALE FACTOR: .99972501 CALCULATED FROM THE W. 1/4 CORNER OF SECTION 29, T3N, R65W
- OPERATOR: ROB WILSON / PDOP = 1.2
- SEE ADDENDUM TO WELL LOCATION CERTIFICATE FOR EXISTING IMPROVEMENTS WITHIN 500' OF THE WELL PAD.
- WELL FOOTAGES ARE MEASURED AT RIGHT ANGLES TO THE SECTION LINES.
- THE BOTTOM OF HOLE BEARS S00°33'00"E, 6691' FROM THE HEEL LOCATION.

## WELL PAD - RW 29N-5HZ

RW 28C-5HZ  
LOCATION CERTIFICATE  
440' FSL & 1809' FWL SESW (SURFACE)  
1035' FSL & 2265' FWL SESW (HEEL)  
LOCATED IN SECTION 29  
T3N, R65W, 6TH P.M.  
370' FNL & 2310' FWL NENW (BOTTOM)  
LOCATED IN SECTION 5  
T2N, R65W, 6TH P.M.  
WELD COUNTY, COLORADO

**Kerr-McGee Oil &  
Gas Onshore L.P.**  
1099 18th Street  
Denver, Colorado 80202



## CONSULTING, LLC

SHERIDAN OFFICE  
1095 Saberton Avenue  
Sheridan, Wyoming 82801  
Phone 307-674-0609

LOVELAND OFFICE  
1635 Foxtrail Drive, Suite 204  
Loveland, Colorado 80538  
Phone 970-776-4331

DRAFTED BY:	LMO	CHECKED BY:	RKF	SHEET NO:
DATE DRAFTED:	1/23/17	DATE SURVEYED:	12/1/16	1
REVISED:		FILE NAME:	16-147	1 OF 3

# T3N, R65W

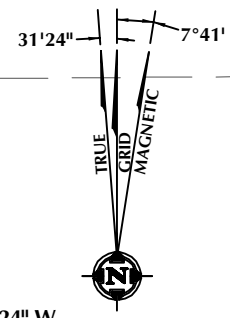
N. 1/4 COR.  
SEC. 32, T3N, R65W  
FOUND 3 1/4" ALUM. CAP  
ILLEGIBLE

MATCH LINE  
SEE SHEET 1

NW. COR.  
SEC. 32, T3N, R65W  
FOUND 2 1/2" ALUM. CAP  
P.L.S. NO. 20671

NE. COR.  
SEC. 32, T3N, R65W  
FOUND 2 1/2" ALUM. CAP  
L.S. NO. 23501

N. 1/16 COR.  
SEC. 31 & SEC. 32  
T3N, R65W  
FOUND 2 1/2" ALUM. CAP  
P.L.S. NO. 24307



CW. 1/16 COR.  
SEC. 32, T3N, R65W  
FOUND 2 1/2" ALUM. CAP  
P.L.S. NO. 24307

CENTER 1/4 COR.  
SEC. 32, T3N, R65W  
FOUND 2" ALUM. CAP  
P.L.S. NO. 29413

**32**

W. 1/4 COR.  
SEC. 32, T3N, R65W  
FOUND 3 1/4" ALUM. CAP  
L.S. NO. 12330

E. 1/4 COR.  
SEC. 32, T3N, R65W  
FOUND 2 1/2" ALUM. CAP  
L.S. NO. 38175

SW. COR.  
SEC. 32, T3N, R65W  
FOUND 2 1/2" ALUM. CAP  
ILLEGIBLE

SE. COR.  
SEC. 32, T3N, R65W  
FOUND 2 1/2" ALUM. CAP  
L.S. NO. 23501

**SURFACE LOCATION: NAD 83**  
GROUND ELEVATION= 4883.4'  
LATITUDE= 40.190388°  
LONGITUDE= -104.690250°  
LATITUDE= 40°11'25.396"  
LONGITUDE= -104°41'24.899"  
**HEEL LOCATION: NAD 83**  
LATITUDE= 40.192018°  
LONGITUDE= -104.688623°  
LATITUDE= 40°11'31.264"  
LONGITUDE= -104°41'19.042"  
**BOTTOM HOLE LOCATION: NAD 83**  
LATITUDE= 40.173651°  
LONGITUDE= -104.688612°  
LATITUDE= 40°10'25.144"  
LONGITUDE= -104°41'19.003"

S 00°33'00" E 6691' GRID  
S 00°01'36" E TRUE  
S 08°14'00" E MAGNETIC

S. 1/4 COR.  
SEC. 32, T3N, R65W  
FOUND 2" ALUM. CAP  
P.L.S. NO. 29413

MATCH LINE  
SEE SHEET 3

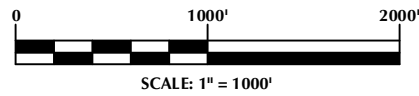
### CERTIFICATE OF SURVEYOR:

THIS IS TO CERTIFY THAT THE ABOVE PLAT WAS PREPARED FROM FIELD NOTES OF ACTUAL SURVEY MADE BY ME OR UNDER MY SUPERVISION AND THAT THE SAME ARE TRUE AND CORRECT TO THE BEST OF MY KNOWLEDGE AND BELIEF. THIS CERTIFICATE DOES NOT REPRESENT A LAND SURVEY PLAT OR IMPROVEMENT SURVEY PLAT AS DEFINED BY C.R.S. 38-51-302 AND CANNOT BE RELIED UPON TO DETERMINE OWNERSHIP.

*Randall K. French*  
PROFESSIONAL LAND SURVEYOR  
COLORADO REGISTRATION NUMBER 38512

NOTICE:  
ACCORDING TO COLORADO STATE LAW YOU MUST COMMENCE ANY LEGAL ACTION BASED UPON ANY DEFECT IN THIS SURVEY WITHIN THREE YEARS AFTER YOU FIRST DISCOVER SUCH DEFECT. IN NO EVENT MAY ANY ACTION BASED UPON ANY DEFECT IN THIS SURVEY BE COMMENCED MORE THAN TEN YEARS FROM THE DATE ON THE CERTIFICATION SHOWN HEREON.

WELLBORE CONTINUES INTO SECTION 5, T2N, R65W



NOTE:  
MAGNETIC NORTH IS CURRENT AS OF 12/2/2016.  
MAGNETIC NORTH CHANGES WEST 0°06' PER YEAR.

### NOTES:

- ▲ INDICATES SECTION CORNER
- INDICATES CALCULATED CORNER
- ELEVATION BASED ON NAVD88 (GEOID12B)
- BASIS OF BEARING DERIVED FROM COLORADO COORDINATE SYSTEM OF 1983 NORTH ZONE.
- ALL MEASURED DISTANCES ARE GRID.
- COMBINED SCALE FACTOR: .99972501 CALCULATED FROM THE W. 1/4 CORNER OF SECTION 29, T3N, R65W
- OPERATOR: ROB WILSON / PDOP = 1.2
- SEE ADDENDUM TO WELL LOCATION CERTIFICATE FOR EXISTING IMPROVEMENTS WITHIN 500' OF THE WELL PAD.
- WELL FOOTAGES ARE MEASURED AT RIGHT ANGLES TO THE SECTION LINES.
- THE BOTTOM OF HOLE BEARS S00°33'00"E, 6691' FROM THE HEEL LOCATION.

### WELL PAD - RW 29N-5HZ

RW 28C-5HZ  
LOCATION CERTIFICATE  
440' FSL & 1809' FWL SESW (SURFACE)  
1035' FSL & 2265' FWL SESW (HEEL)  
LOCATED IN SECTION 29  
T3N, R65W, 6TH P.M.  
370' FNL & 2310' FWL NENW (BOTTOM)  
LOCATED IN SECTION 5  
T2N, R65W, 6TH P.M.  
WELD COUNTY, COLORADO

**Kerr-McGee Oil & Gas Onshore L.P.**  
1099 18th Street  
Denver, Colorado 80202



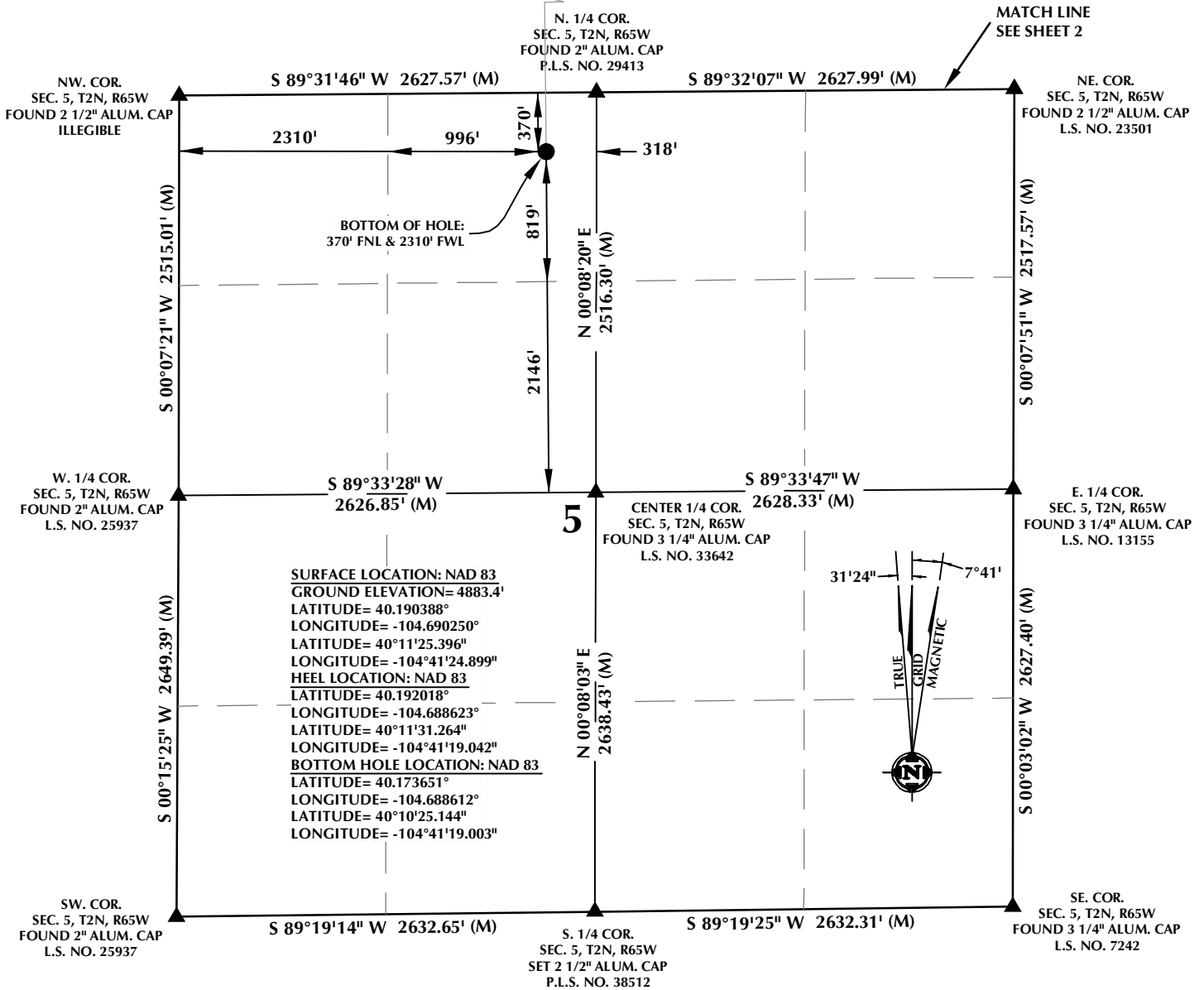
### CONSULTING, LLC

SHERIDAN OFFICE  
1095 Saberton Avenue  
Sheridan, Wyoming 82801  
Phone 307-674-0609

LOVELAND OFFICE  
1635 Foxtrail Drive, Suite 204  
Loveland, Colorado 80538  
Phone 970-776-4331

DRAFTED BY: LMO	CHECKED BY: RKF	SHEET NO: <b>2</b> 2 OF 3
DATE DRAFTED: 1/23/17	DATE SURVEYED: 12/1/16	
REVISED:	FILE NAME: 16-147	

# T2N, R65W

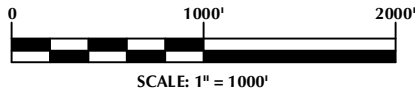


## CERTIFICATE OF SURVEYOR:

THIS IS TO CERTIFY THAT THE ABOVE PLAT WAS PREPARED FROM FIELD NOTES OF ACTUAL SURVEY MADE BY ME OR UNDER MY SUPERVISION AND THAT THE SAME ARE TRUE AND CORRECT TO THE BEST OF MY KNOWLEDGE AND BELIEF. THIS CERTIFICATE DOES NOT REPRESENT A LAND SURVEY PLAT OR IMPROVEMENT SURVEY PLAT AS DEFINED BY C.R.S. 38-51-102 AND CANNOT BE RELIED UPON TO DETERMINE OWNERSHIP.

*Randall K. French*  
**PROFESSIONAL LAND SURVEYOR**  
 COLORADO REGISTRATION NUMBER 38512

NOTICE:  
 ACCORDING TO COLORADO STATE LAW YOU MUST COMMENCE ANY LEGAL ACTION BASED UPON ANY DEFECT IN THIS SURVEY WITHIN THREE YEARS AFTER YOU FIRST DISCOVER SUCH DEFECT. IN NO EVENT MAY ANY ACTION BASED UPON ANY DEFECT IN THIS SURVEY BE COMMENCED MORE THAN TEN YEARS FROM THE DATE ON THE CERTIFICATION SHOWN HEREON.



NOTE:  
 MAGNETIC NORTH IS CURRENT AS OF 12/2/2016.  
 MAGNETIC NORTH CHANGES WEST 0°06' PER YEAR.

## NOTES:

- ▲ INDICATES SECTION CORNER
- INDICATES CALCULATED CORNER
- ELEVATION BASED ON NAVD88 (GEOID12B)
- BASIS OF BEARING DERIVED FROM COLORADO COORDINATE SYSTEM OF 1983 NORTH ZONE.
- ALL MEASURED DISTANCES ARE GRID.
- COMBINED SCALE FACTOR: .99972501 CALCULATED FROM THE W. 1/4 CORNER OF SECTION 29, T3N, R65W
- OPERATOR: ROB WILSON / PDOP = 1.2
- SEE ADDENDUM TO WELL LOCATION CERTIFICATE FOR EXISTING IMPROVEMENTS WITHIN 500' OF THE WELL PAD.
- WELL FOOTAGES ARE MEASURED AT RIGHT ANGLES TO THE SECTION LINES.
- THE BOTTOM OF HOLE BEARS S00°33'00"E, 6691' FROM THE HEEL LOCATION.

## WELL PAD - RW 29N-5HZ

RW 28C-5HZ  
 LOCATION CERTIFICATE  
 440' FSL & 1809' FWL SESW (SURFACE)  
 1035' FSL & 2265' FWL SESW (HEEL)  
 LOCATED IN SECTION 29  
 T3N, R65W, 6TH P.M.  
 370' FNL & 2310' FWL NENW (BOTTOM)  
 LOCATED IN SECTION 5  
 T2N, R65W, 6TH P.M.  
 WELD COUNTY, COLORADO

**Kerr-McGee Oil & Gas Onshore L.P.**  
 1099 18th Street  
 Denver, Colorado 80202



## CONSULTING, LLC

SHERIDAN OFFICE  
 1095 Saberton Avenue  
 Sheridan, Wyoming 82801  
 Phone 307-674-0609

LOVELAND OFFICE  
 1635 Foxtrail Drive, Suite 204  
 Loveland, Colorado 80538  
 Phone 970-776-4331

DRAFTED BY:	LMO	CHECKED BY:	RKF	SHEET NO:
DATE DRAFTED:	1/23/17	DATE SURVEYED:	12/1/16	<b>3</b>
REVISED:		FILE NAME:	16-147	3 OF 3