

T3N, R65W

N. 1/4 COR.
SEC. 29, T3N, R65W
FOUND 3 1/4" ALUM. CAP
L.S. NO. 33642

NW. COR.
SEC. 29, T3N, R65W
FOUND 3 1/4" ALUM. CAP
W.C. 30' WEST
OF TRUE CORNER
P.L.S. NO. 10855

NE. COR.
SEC. 29, T3N, R65W
FOUND 2 1/2" ALUM. CAP
L.S. NO. 23501

S 89°03'04" W 2635.70' (M)

S 89°03'18" W 2635.85' (M)

N 00°42'56" W 2637.66' (M)

N 00°36'50" W
2646.90' (C)

N 00°30'28" W 2655.98' (M)

SURFACE LOCATION: NAD 83
GROUND ELEVATION= 4884.5'
LATITUDE= 40.190388°
LONGITUDE= -104.690303°
LATITUDE= 40°11'25.398"
LONGITUDE= -104°41'25.092"
HEEL LOCATION: NAD 83
LATITUDE= 40.191954°
LONGITUDE= -104.690054°
LATITUDE= 40°11'31.034"
LONGITUDE= -104°41'24.195"
BOTTOM HOLE LOCATION: NAD 83
LATITUDE= 40.173654°
LONGITUDE= -104.690187°
LATITUDE= 40°10'25.154"
LONGITUDE= -104°41'24.673"

31°23" 7°41"



W. 1/4 COR.
SEC. 29, T3N, R65W
FOUND 3 1/4" ALUM. CAP
W.C. 30' WEST
OF TRUE CORNER
P.L.S. NO. 10855

S 89°15'07" W
2630.97' (C)

S 89°15'07" W
2630.89' (C)

E. 1/4 COR.
SEC. 29, T3N, R65W
FOUND 2 1/2" ALUM. CAP
L.S. NO. 30120

N 00°42'42" W
1306.95' (M)

29

S. 1/16 COR.
SEC. 29 & SEC. 30,
T3N, R65W
FOUND 3 1/4" ALUM. CAP
L.S. NO. 38285

N 00°42'46" W
1307.13' (M)

HEEL LOCATION

N 00°36'50" W
2629.41' (C)

N 00°31'59" W 2643.78' (M)

1865'
RW 14N-32HZ
SURFACE LOCATION

1794'
1011'

SW. COR.
SEC. 29, T3N, R65W
FOUND 2 1/2" ALUM. CAP
P.L.S. NO. 20671

S 89°35'10" W 2626.49' (M)

S. 1/4 COR.
SEC. 29, T3N, R65W
FOUND 3 1/4" ALUM. CAP
ILLEGIBLE

S 89°33'54" W 2627.17' (M)

MATCH LINE
SEE SHEET 2

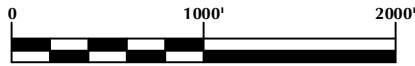
WELLBORE CONTINUES
INTO SECTION 32

CERTIFICATE OF SURVEYOR:

THIS IS TO CERTIFY THAT THE ABOVE PLAT WAS PREPARED FROM FIELD NOTES OF ACTUAL SURVEY MADE BY ME OR UNDER MY SUPERVISION AND THAT THE SAME ARE TRUE AND CORRECT TO THE BEST OF MY KNOWLEDGE AND BELIEF. THIS CERTIFICATE DOES NOT REPRESENT A LAND SURVEY PLAT OR IMPROVEMENT SURVEY PLAT AS DEFINED BY C.R.S. 38-51-302 AND CANNOT BE RELIED UPON TO DETERMINE OWNERSHIP.

Randall K. French
PROFESSIONAL LAND SURVEYOR
COLORADO REGISTRATION NUMBER 38512
12/23/17

NOTICE:
ACCORDING TO COLORADO STATE LAW YOU MUST COMMENCE ANY LEGAL ACTION BASED UPON ANY DEFECT IN THIS SURVEY WITHIN THREE YEARS AFTER YOU FIRST DISCOVER SUCH DEFECT. IN NO EVENT MAY ANY ACTION BASED UPON ANY DEFECT IN THIS SURVEY BE COMMENCED MORE THAN TEN YEARS FROM THE DATE ON THE CERTIFICATION SHOWN HEREON.



SCALE: 1" = 1000'

NOTE:
MAGNETIC NORTH IS CURRENT AS OF 12/2/2016.
MAGNETIC NORTH CHANGES WEST 0°06' PER YEAR.

NOTES:

- ▲ INDICATES SECTION CORNER
- INDICATES CALCULATED CORNER
- ELEVATION BASED ON NAVD88 (GEOID12B)
- BASIS OF BEARING DERIVED FROM COLORADO COORDINATE SYSTEM OF 1983 NORTH ZONE.
- ALL MEASURED DISTANCES ARE GRID.
- COMBINED SCALE FACTOR: .99972501 CALCULATED FROM THE W. 1/4 CORNER OF SECTION 29, T3N, R65W
- OPERATOR: ROB WILSON / PDOP = 1.2
- SEE ADDENDUM TO WELL LOCATION CERTIFICATE FOR EXISTING IMPROVEMENTS WITHIN 500' OF THE WELL PAD.
- WELL FOOTAGES ARE MEASURED AT RIGHT ANGLES TO THE SECTION LINES.
- THE BOTTOM OF HOLE BEARS S00°12'16"E, 6666' FROM THE HEEL LOCATION.

WELL PAD - RW 29N-5HZ

RW 14N-32HZ
LOCATION CERTIFICATE
441' FSL & 1794' FWL SESW (SURFACE)
1011' FSL & 1865' FWL SESW (HEEL)
LOCATED IN SECTION 29
T3N, R65W, 6TH P.M.
370' FNL & 1869' FWL NENW (BOTTOM)
LOCATED IN SECTION 5
T2N, R65W, 6TH P.M.
WELD COUNTY, COLORADO

**Kerr-McGee Oil &
Gas Onshore L.P.**
1099 18th Street
Denver, Colorado 80202



CONSULTING, LLC

SHERIDAN OFFICE
1095 Saberton Avenue
Sheridan, Wyoming 82801
Phone 307-674-0609

LOVELAND OFFICE
1635 Foxtrail Drive, Suite 204
Loveland, Colorado 80538
Phone 970-776-4331

DRAFTED BY:	LMO	CHECKED BY:	RKF	SHEET NO:
DATE DRAFTED:	1/23/17	DATE SURVEYED:	12/1/16	1
REVISED:		FILE NAME:	16-147	1 OF 3

T3N, R65W

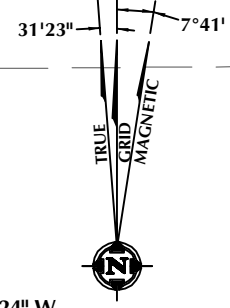
N. 1/4 COR.
SEC. 32, T3N, R65W
FOUND 3 1/4" ALUM. CAP
ILLEGIBLE

MATCH LINE
SEE SHEET 1

NW. COR.
SEC. 32, T3N, R65W
FOUND 2 1/2" ALUM. CAP
P.L.S. NO. 20671

NE. COR.
SEC. 32, T3N, R65W
FOUND 2 1/2" ALUM. CAP
L.S. NO. 23501

N. 1/16 COR.
SEC. 31 & SEC. 32
T3N, R65W
FOUND 2 1/2" ALUM. CAP
P.L.S. NO. 24307



CW. 1/16 COR.
SEC. 32, T3N, R65W
FOUND 2 1/2" ALUM. CAP
P.L.S. NO. 24307

CENTER 1/4 COR.
SEC. 32, T3N, R65W
FOUND 2" ALUM. CAP
P.L.S. NO. 29413

32

W. 1/4 COR.
SEC. 32, T3N, R65W
FOUND 3 1/4" ALUM. CAP
L.S. NO. 12330

E. 1/4 COR.
SEC. 32, T3N, R65W
FOUND 2 1/2" ALUM. CAP
L.S. NO. 38175

SW. COR.
SEC. 32, T3N, R65W
FOUND 2 1/2" ALUM. CAP
ILLEGIBLE

SE. COR.
SEC. 32, T3N, R65W
FOUND 2 1/2" ALUM. CAP
L.S. NO. 23501

SURFACE LOCATION: NAD 83
GROUND ELEVATION= 4884.5'
LATITUDE= 40.190388°
LONGITUDE= -104.690303°
LATITUDE= 40°11'25.398"
LONGITUDE= -104°41'25.092"
HEEL LOCATION: NAD 83
LATITUDE= 40.191954°
LONGITUDE= -104.690054°
LATITUDE= 40°11'31.034"
LONGITUDE= -104°41'24.195"
BOTTOM HOLE LOCATION: NAD 83
LATITUDE= 40.173654°
LONGITUDE= -104.690187°
LATITUDE= 40°10'25.154"
LONGITUDE= -104°41'24.673"

S 89°31'46" W 2627.57' (M)

S. 1/4 COR.
SEC. 32, T3N, R65W
FOUND 2" ALUM. CAP
P.L.S. NO. 29413

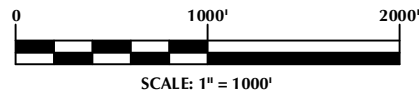
MATCH LINE
SEE SHEET 3

WELLBORE
CONTINUES INTO
SECTION 5, T2N, R65W

CERTIFICATE OF SURVEYOR:

THIS IS TO CERTIFY THAT THE ABOVE PLAT WAS PREPARED FROM FIELD NOTES OF ACTUAL SURVEY MADE BY ME OR UNDER MY SUPERVISION AND THAT THE SAME ARE TRUE AND CORRECT TO THE BEST OF MY KNOWLEDGE AND BELIEF. THIS CERTIFICATE DOES NOT REPRESENT A LAND SURVEY PLAT OR IMPROVEMENT SURVEY PLAT AS DEFINED BY C.R.S. 38-51-302 AND CANNOT BE RELIED UPON TO DETERMINE OWNERSHIP.

Randall K. French
PROFESSIONAL LAND SURVEYOR
COLORADO REGISTRATION NUMBER 38512



NOTE:
MAGNETIC NORTH IS CURRENT AS OF 12/2/2016.
MAGNETIC NORTH CHANGES WEST 0°06' PER YEAR.

NOTES:

- ▲ INDICATES SECTION CORNER
- INDICATES CALCULATED CORNER
- ELEVATION BASED ON NAVD88 (GEOID12B)
- BASIS OF BEARING DERIVED FROM COLORADO COORDINATE SYSTEM OF 1983 NORTH ZONE.
- ALL MEASURED DISTANCES ARE GRID.
- COMBINED SCALE FACTOR: .99972501 CALCULATED FROM THE W. 1/4 CORNER OF SECTION 29, T3N, R65W
- OPERATOR: ROB WILSON / PDOP = 1.2
- SEE ADDENDUM TO WELL LOCATION CERTIFICATE FOR EXISTING IMPROVEMENTS WITHIN 500' OF THE WELL PAD.
- WELL FOOTAGES ARE MEASURED AT RIGHT ANGLES TO THE SECTION LINES.
- THE BOTTOM OF HOLE BEARS S00°12'16"E, 6666' FROM THE HEEL LOCATION.

WELL PAD - RW 29N-5HZ

RW 14N-32HZ
LOCATION CERTIFICATE
441' FSL & 1794' FWL SESW (SURFACE)
1011' FSL & 1865' FWL SESW (HEEL)
LOCATED IN SECTION 29
T3N, R65W, 6TH P.M.
370' FNL & 1869' FWL NENW (BOTTOM)
LOCATED IN SECTION 5
T2N, R65W, 6TH P.M.
WELD COUNTY, COLORADO

**Kerr-McGee Oil &
Gas Onshore L.P.**
1099 18th Street
Denver, Colorado 80202



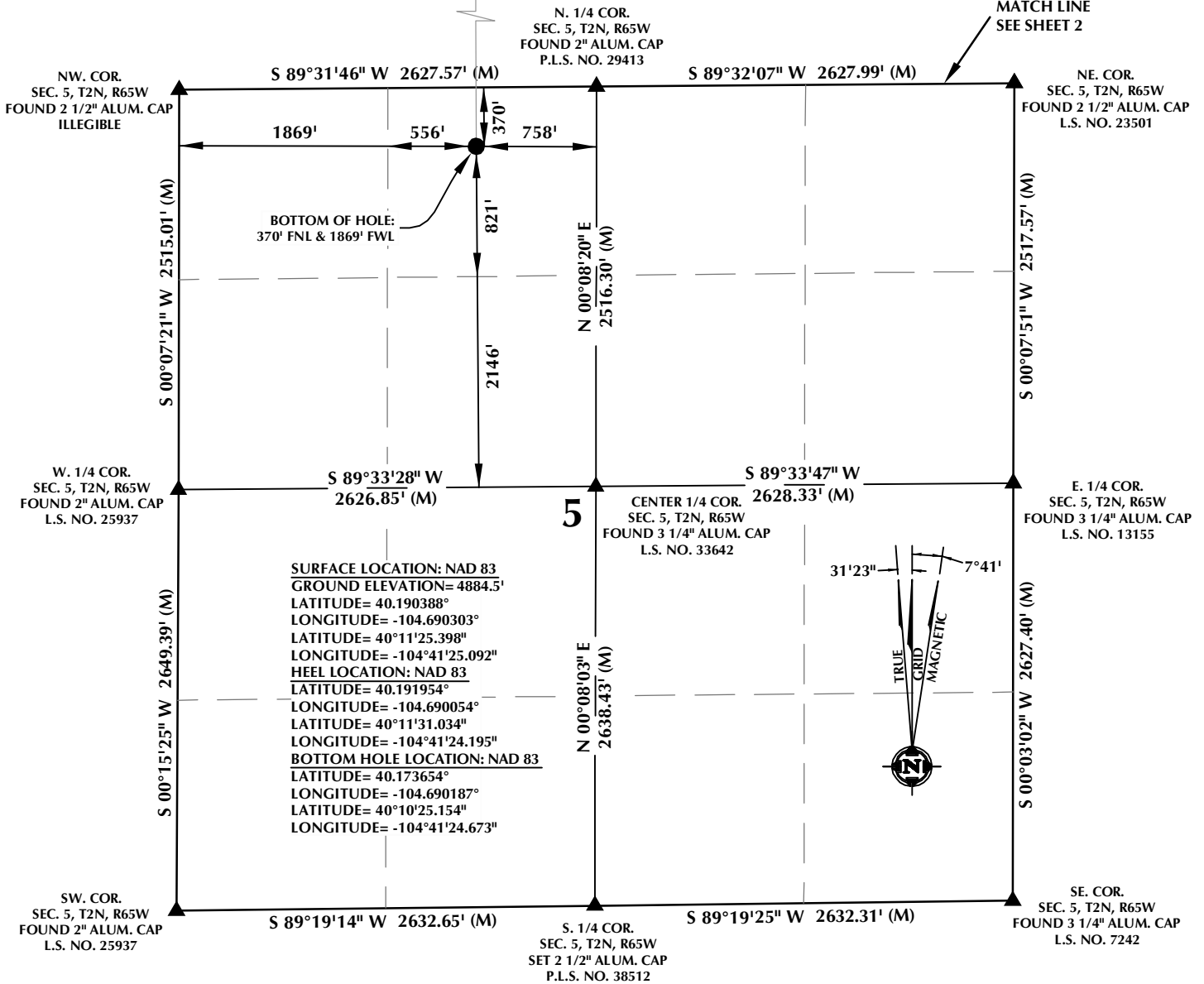
CONSULTING, LLC

SHERIDAN OFFICE
1095 Saberton Avenue
Sheridan, Wyoming 82801
Phone 307-674-0609

LOVELAND OFFICE
1635 Foxtrail Drive, Suite 204
Loveland, Colorado 80538
Phone 970-776-4331

DRAFTED BY:	LMO	CHECKED BY:	RKF	SHEET NO:
DATE DRAFTED:	1/23/17	DATE SURVEYED:	12/1/16	2
REVISED:		FILE NAME:	16-147	2 OF 3

T2N, R65W



CERTIFICATE OF SURVEYOR:

THIS IS TO CERTIFY THAT THE ABOVE PLAT WAS PREPARED FROM FIELD NOTES OF ACTUAL SURVEY MADE BY ME OR UNDER MY SUPERVISION AND THAT THE SAME ARE TRUE AND CORRECT TO THE BEST OF MY KNOWLEDGE AND BELIEF. THIS CERTIFICATE DOES NOT REPRESENT A LAND SURVEY, PLAT OR IMPROVEMENT SURVEY PLAT AS DEFINED BY C.R.S. 38-51-302 AND CANNOT BE RELIED UPON TO DETERMINE OWNERSHIP.

Randall K. French
PROFESSIONAL LAND SURVEYOR
COLORADO REGISTRATION NUMBER 38512

NOTICE:
ACCORDING TO COLORADO STATE LAW YOU MUST COMMENCE ANY LEGAL ACTION BASED UPON ANY DEFECT IN THIS SURVEY WITHIN THREE YEARS AFTER YOU FIRST DISCOVER SUCH DEFECT. IN NO EVENT MAY ANY ACTION BASED UPON ANY DEFECT IN THIS SURVEY BE COMMENCED MORE THAN TEN YEARS FROM THE DATE ON THE CERTIFICATION SHOWN HEREON.

NOTES:

- ▲ INDICATES SECTION CORNER
- INDICATES CALCULATED CORNER
- ELEVATION BASED ON NAVD88 (GEOID12B)
- BASIS OF BEARING DERIVED FROM COLORADO COORDINATE SYSTEM OF 1983 NORTH ZONE.
- ALL MEASURED DISTANCES ARE GRID.
COMBINED SCALE FACTOR: .99972501 CALCULATED FROM THE W. 1/4 CORNER OF SECTION 29, T3N, R65W
OPERATOR: ROB WILSON / PDOP = 1.2
- SEE ADDENDUM TO WELL LOCATION CERTIFICATE FOR EXISTING IMPROVEMENTS WITHIN 500' OF THE WELL PAD.
- WELL FOOTAGES ARE MEASURED AT RIGHT ANGLES TO THE SECTION LINES.
- THE BOTTOM OF HOLE BEARS S00°12'16"E, 6666' FROM THE HEEL LOCATION.

WELL PAD - RW 29N-5HZ

RW 14N-32HZ
LOCATION CERTIFICATE
441' FSL & 1794' FWL SESW (SURFACE)
1011' FSL & 1865' FWL SESW (HEEL)
LOCATED IN SECTION 29
T3N, R65W, 6TH P.M.
370' FNL & 1869' FWL NENW (BOTTOM)
LOCATED IN SECTION 5
T2N, R65W, 6TH P.M.
WELD COUNTY, COLORADO

**Kerr-McGee Oil &
Gas Onshore L.P.**
1099 18th Street
Denver, Colorado 80202



CONSULTING, LLC

SHERIDAN OFFICE
1095 Saberton Avenue
Sheridan, Wyoming 82801
Phone 307-674-0609

LOVELAND OFFICE
1635 Foxtrail Drive, Suite 204
Loveland, Colorado 80538
Phone 970-776-4331

DRAFTED BY:	LMO	CHECKED BY:	RKF	SHEET NO:
DATE DRAFTED:	1/23/17	DATE SURVEYED:	12/1/16	3
REVISED:		FILE NAME:	16-147	3 OF 3