



# Kerr-McGee Oil & Gas Onshore LP

A subsidiary of Anadarko Petroleum Corporation

1099 18<sup>th</sup> Street  
Denver, CO 80202  
720-929-6000

February 7, 2017

Matt Lepore  
Director, Colorado Oil and Gas Conservation Commission  
Department of Natural Resources  
The Chancery Building  
1120 Lincoln Street, Suite 801  
Denver, CO 80203

Re: **30 Day Certification Letter - 318A.e**  
RW 29N-5HZ (Doc No. 401203293)  
Township 3 North, Range 65 West  
Section 29: SESW  
Unit Acreage: 480 acres  
Unit Spacing: 03N65W Sec 29: S2SW  
03N65W Sec 32: W2  
02N65W Sec 5: N2NW  
Weld County, Colorado

Dear Director Lepore:

Kerr McGee Oil and Gas Onshore LP ("KMG") hereby certifies that KMG owns one hundred percent (100%) of the leasehold interest in the mineral rights in the proposed spacing unit. KMG hereby respectfully requests approval of this boundary well.

If you have any questions or issues regarding this permit, please contact our office.

Sincerely,

**Kerr-McGee Oil and Gas Onshore LP**

A handwritten signature in black ink that reads "Shayelyn Marshall".

Shayelyn Marshall  
Regulatory Analyst I

Enclosure

# PROPOSED SPACING UNIT

## T3N, R65W

N. 1/4 COR.  
SEC. 29, T3N, R65W  
FOUND 3 1/4" ALUM. CAP  
L.S. NO. 33642

NE COR.  
SEC. 29, T3N, R65W  
FOUND 2 1/2" ALUM. CAP  
L.S. NO. 23501

NW COR.  
SEC. 29, T3N, R65W  
FOUND 3 1/4" ALUM. CAP  
W.C. 30' WEST  
OF TRUE CORNER  
P.L.S. NO. 10855

W. 1/4 COR.  
SEC. 29, T3N, R65W  
FOUND 3 1/4" ALUM. CAP  
W.C. 30' WEST  
OF TRUE CORNER  
P.L.S. NO. 10855

S. 1/16 COR.  
SEC. 29 & SEC. 30,  
T3N, R65W  
FOUND 3 1/4" ALUM. CAP  
L.S. NO. 38285

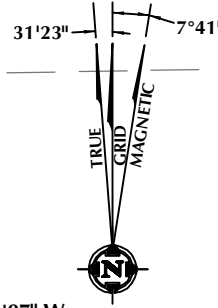
SW COR.  
SEC. 29, T3N, R65W  
FOUND 2 1/2" ALUM. CAP  
P.L.S. NO. 20671

S. 1/4 COR.  
SEC. 29, T3N, R65W  
FOUND 3 1/4" ALUM. CAP  
ILLEGIBLE

E. 1/4 COR.  
SEC. 29, T3N, R65W  
FOUND 2 1/2" ALUM. CAP  
L.S. NO. 30120

SE COR.  
SEC. 29, T3N, R65W  
FOUND 2 1/2" ALUM. CAP  
L.S. NO. 23501

SURFACE LOCATION: NAD 83  
GROUND ELEVATION= 4886.5'  
LATITUDE= 40.190390°  
LONGITUDE= -104.690572°  
HEEL LOCATION: NAD 83  
LATITUDE= 40.190447°  
LONGITUDE= -104.691948°  
BOTTOM HOLE LOCATION: NAD 83  
LATITUDE= 40.173660°  
LONGITUDE= -104.691715°  
LATITUDE= 40°10'25.176"  
LONGITUDE= -104°41'30.174"



29

**RW 29N-5HZ**  
SURFACE LOCATION

1334'  
1719'  
461'  
441'

WELLBORE CONTINUES  
INTO SECTION 32

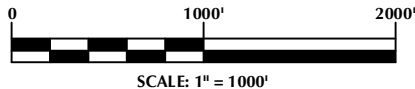
MATCH LINE  
SEE SHEET 2

**CERTIFICATE OF SURVEYOR:**

THIS IS TO CERTIFY THAT THE ABOVE PLAT WAS PREPARED FROM FIELD NOTES OF ACTUAL SURVEY MADE BY ME OR UNDER MY SUPERVISION AND THAT THE SAME ARE TRUE AND CORRECT TO THE BEST OF MY KNOWLEDGE AND BELIEF. THIS CERTIFICATE DOES NOT REPRESENT A LAND SURVEY, PLAT OR IMPROVEMENT SURVEY PLAT AS DEFINED BY C.R.S. 38-51-302 AND CANNOT BE RELIED UPON TO DETERMINE OWNERSHIP.

*Randall K. French*  
PROFESSIONAL LAND SURVEYOR  
COLORADO REGISTRATION NUMBER 38512  
12/23/17

NOTICE:  
ACCORDING TO COLORADO STATE LAW YOU MUST COMMENCE ANY LEGAL ACTION BASED UPON ANY DEFECT IN THIS SURVEY WITHIN THREE YEARS AFTER YOU FIRST DISCOVER SUCH DEFECT. IN NO EVENT MAY ANY ACTION BASED UPON ANY DEFECT IN THIS SURVEY BE COMMENCED MORE THAN TEN YEARS FROM THE DATE ON THE CERTIFICATION SHOWN HEREON.



NOTE:  
MAGNETIC NORTH IS CURRENT AS OF 12/2/2016.  
MAGNETIC NORTH CHANGES WEST 0°06' PER YEAR.

**NOTES:**

1. ▲ INDICATES SECTION CORNER
2. ● INDICATES CALCULATED CORNER
3. ELEVATION BASED ON NAVD88 (GEOID12B)
4. BASIS OF BEARING DERIVED FROM COLORADO COORDINATE SYSTEM OF 1983 NORTH ZONE.
5. ALL MEASURED DISTANCES ARE GRID.
6. COMBINED SCALE FACTOR: .99972501 CALCULATED FROM THE W. 1/4 CORNER OF SECTION 29, T3N, R65W
7. OPERATOR: ROB WILSON / PDOP = 1.2
8. SEE ADDENDUM TO WELL LOCATION CERTIFICATE FOR EXISTING IMPROVEMENTS WITHIN 500' OF THE WELL PAD.
9. WELL FOOTAGES ARE MEASURED AT RIGHT ANGLES TO THE SECTION LINES.
10. THE BOTTOM OF HOLE BEARS S01°08'00"E, 6116' FROM THE HEEL LOCATION.

**WELL PAD - RW 29N-5HZ**

RW 29N-5HZ  
LOCATION CERTIFICATE  
441' FSL & 1719' FWL SESW (SURFACE)  
461' FSL & 1334' FWL SESW (HEEL)  
LOCATED IN SECTION 29  
T3N, R65W, 6TH P.M.  
368' FNL & 1442' FWL NENW (BOTTOM)  
LOCATED IN SECTION 5  
T2N, R65W, 6TH P.M.  
WELD COUNTY, COLORADO

**Kerr-McGee Oil &  
Gas Onshore L.P.**  
1099 18th Street  
Denver, Colorado 80202



**CONSULTING, LLC**

SHERIDAN OFFICE      LOVELAND OFFICE  
1095 Saberton Avenue      1635 Foxtrail Drive, Suite 204  
Sheridan, Wyoming 82801      Loveland, Colorado 80538  
Phone 307-674-0609      Phone 970-776-4331

DRAFTED BY: LMO	CHECKED BY: RKF	SHEET NO:	<b>1</b>
DATE DRAFTED: 1/23/17	DATE SURVEYED: 12/1/16		
REVISED:	FILE NAME: 16-147		1 OF 3

# PROPOSED SPACING UNIT

## T3N, R65W

N. 1/4 COR.  
SEC. 32, T3N, R65W  
FOUND 3 1/4" ALUM. CAP  
ILLEGIBLE

MATCH LINE  
SEE SHEET 1

NW COR.  
SEC. 32, T3N, R65W  
FOUND 2 1/2" ALUM. CAP  
P.L.S. NO. 20671

NE COR.  
SEC. 32, T3N, R65W  
FOUND 2 1/2" ALUM. CAP  
L.S. NO. 23501

N. 1/16 COR.  
SEC. 31 & SEC. 32  
T3N, R65W  
FOUND 2 1/2" ALUM. CAP  
P.L.S. NO. 24307

CW. 1/16 COR.  
SEC. 32, T3N, R65W  
FOUND 2 1/2" ALUM. CAP  
P.L.S. NO. 24307

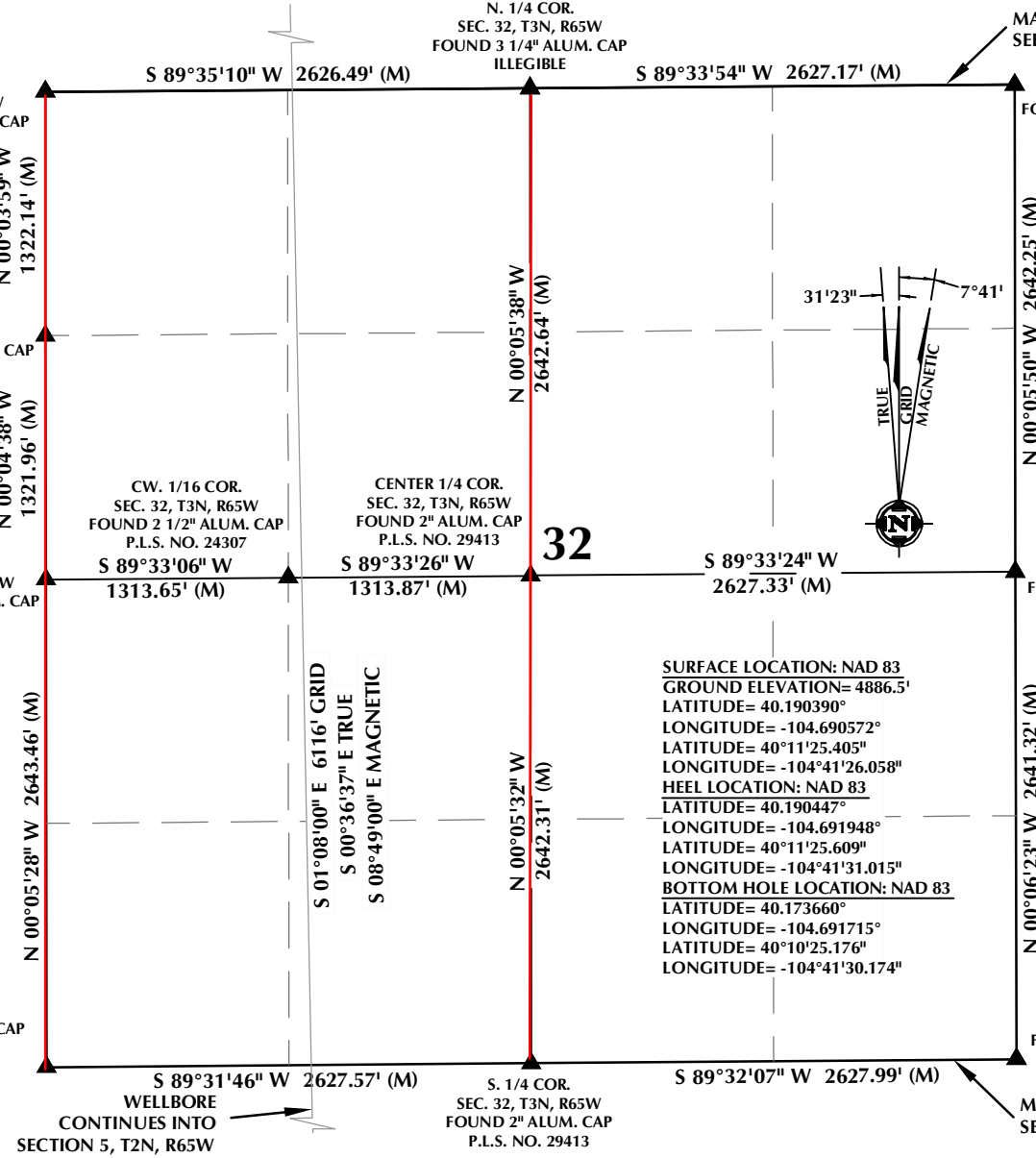
CENTER 1/4 COR.  
SEC. 32, T3N, R65W  
FOUND 2" ALUM. CAP  
P.L.S. NO. 29413

W. 1/4 COR.  
SEC. 32, T3N, R65W  
FOUND 3 1/4" ALUM. CAP  
L.S. NO. 12330

E. 1/4 COR.  
SEC. 32, T3N, R65W  
FOUND 2 1/2" ALUM. CAP  
L.S. NO. 38175

SW COR.  
SEC. 32, T3N, R65W  
FOUND 2 1/2" ALUM. CAP  
ILLEGIBLE

SE COR.  
SEC. 32, T3N, R65W  
FOUND 2 1/2" ALUM. CAP  
L.S. NO. 23501

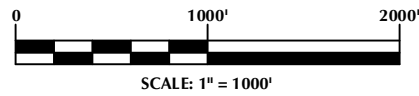


**SURFACE LOCATION: NAD 83**  
GROUND ELEVATION= 4886.5'  
LATITUDE= 40.190390°  
LONGITUDE= -104.690572°  
LATITUDE= 40°11'25.405"  
LONGITUDE= -104°41'26.058"  
**HEEL LOCATION: NAD 83**  
LATITUDE= 40.190447°  
LONGITUDE= -104.691948°  
LATITUDE= 40°11'25.609"  
LONGITUDE= -104°41'31.015"  
**BOTTOM HOLE LOCATION: NAD 83**  
LATITUDE= 40.173660°  
LONGITUDE= -104.691715°  
LATITUDE= 40°10'25.176"  
LONGITUDE= -104°41'30.174"

### CERTIFICATE OF SURVEYOR:

THIS IS TO CERTIFY THAT THE ABOVE PLAT WAS PREPARED FROM FIELD NOTES OF ACTUAL SURVEY MADE BY ME OR UNDER MY SUPERVISION AND THAT THE SAME ARE TRUE AND CORRECT TO THE BEST OF MY KNOWLEDGE AND BELIEF. THIS CERTIFICATE DOES NOT REPRESENT A LAND SURVEY PLAT OR IMPROVEMENT SURVEY PLAT AS DEFINED BY C.R.S. 38-51-302 AND CANNOT BE RELIED UPON TO DETERMINE OWNERSHIP.

*Randall K. French*  
PROFESSIONAL LAND SURVEYOR  
COLORADO REGISTRATION NUMBER 38512  
12/23/17



**NOTE:**  
MAGNETIC NORTH IS CURRENT AS OF 12/2/2016.  
MAGNETIC NORTH CHANGES WEST 0°06' PER YEAR.

### NOTES:

1. ▲ INDICATES SECTION CORNER
2. ● INDICATES CALCULATED CORNER
3. ELEVATION BASED ON NAVD88 (GEOID12B)
4. BASIS OF BEARING DERIVED FROM COLORADO COORDINATE SYSTEM OF 1983 NORTH ZONE.
5. ALL MEASURED DISTANCES ARE GRID.
6. COMBINED SCALE FACTOR: .99972501 CALCULATED FROM THE W. 1/4 CORNER OF SECTION 29, T3N, R65W
7. OPERATOR: ROB WILSON / PDOP = 1.2
8. SEE ADDENDUM TO WELL LOCATION CERTIFICATE FOR EXISTING IMPROVEMENTS WITHIN 500' OF THE WELL PAD.
9. WELL FOOTAGES ARE MEASURED AT RIGHT ANGLES TO THE SECTION LINES.
10. THE BOTTOM OF HOLE BEARS S01°08'00"E, 6116' FROM THE HEEL LOCATION.

### WELL PAD - RW 29N-5HZ

RW 29N-5HZ  
LOCATION CERTIFICATE  
441' FSL & 1719' FWL SESW (SURFACE)  
461' FSL & 1334' FWL SESW (HEEL)  
LOCATED IN SECTION 29  
T3N, R65W, 6TH P.M.  
368' FNL & 1442' FWL NENW (BOTTOM)  
LOCATED IN SECTION 5  
T2N, R65W, 6TH P.M.  
WELD COUNTY, COLORADO

**Kerr-McGee Oil &  
Gas Onshore L.P.**  
1099 18th Street  
Denver, Colorado 80202



### CONSULTING, LLC

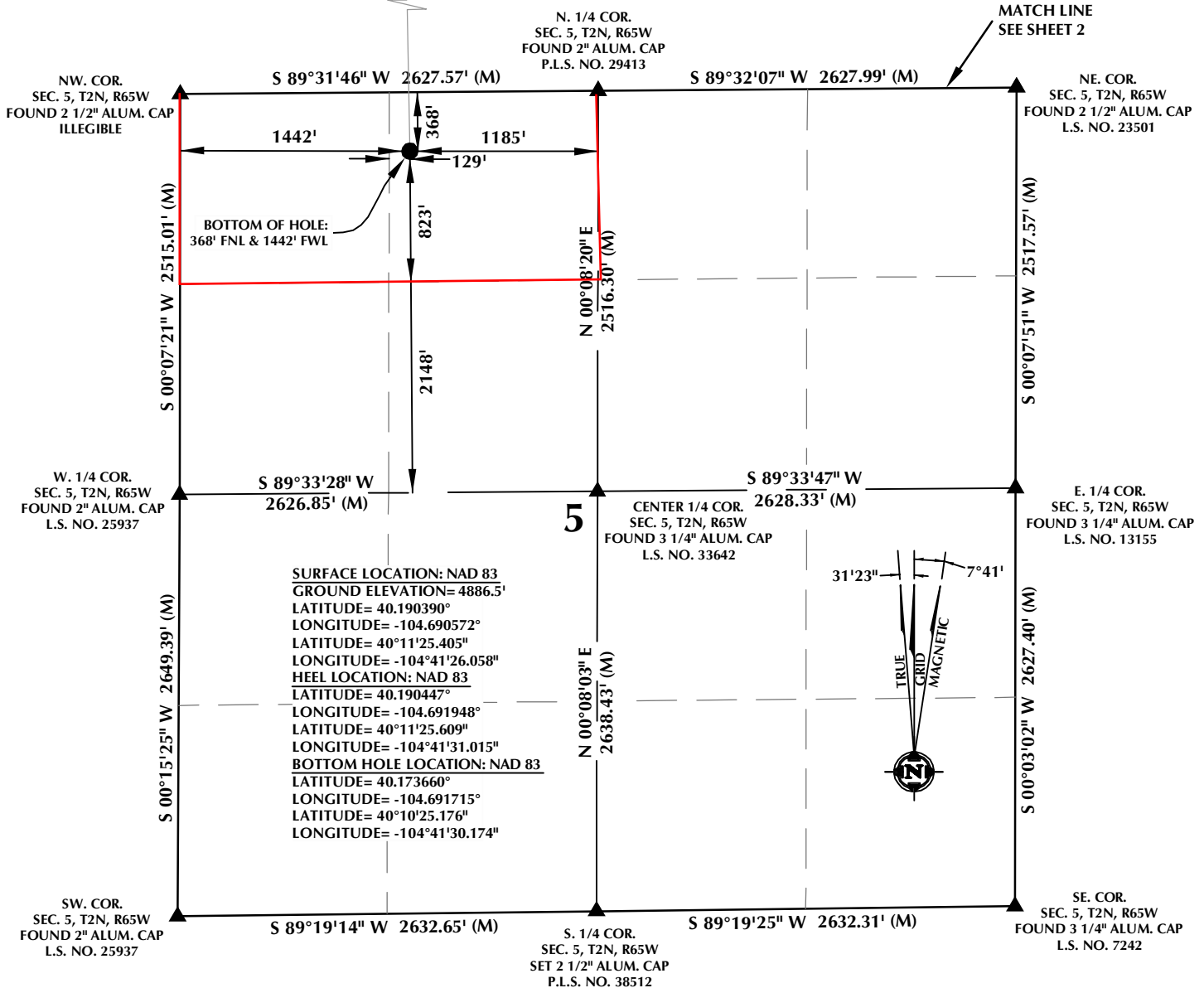
**SHERIDAN OFFICE**  
1095 Saberton Avenue  
Sheridan, Wyoming 82801  
Phone 307-674-0609

**LOVELAND OFFICE**  
1635 Foxtrail Drive, Suite 204  
Loveland, Colorado 80538  
Phone 970-776-4331

DRAFTED BY: LMO	CHECKED BY: RKF	SHEET NO:	2
DATE DRAFTED: 1/23/17	DATE SURVEYED: 12/1/16	FILE NAME:	16-147
REVISED:			2 OF 3

**PROPOSED SPACING UNIT**

**T2N, R65W**

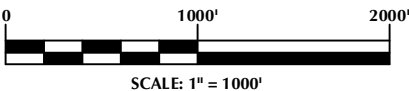


**CERTIFICATE OF SURVEYOR:**

THIS IS TO CERTIFY THAT THE ABOVE PLAT WAS PREPARED FROM FIELD NOTES OF ACTUAL MEASUREMENTS MADE UNDER MY SUPERVISION AND THAT THE SAME ARE TRUE AND CORRECT TO THE BEST OF MY KNOWLEDGE AND BELIEF. THIS CERTIFICATE DOES NOT REPRESENT A LAND SURVEY PLAT OR IMPROVEMENT SURVEY PLAT AS DEFINED BY C.R.S. 38-51-302 AND CANNOT BE RELIED UPON TO DETERMINE OWNERSHIP.

*Randall K. French*  
 RANDALL K. FRENCH  
 PROFESSIONAL LAND SURVEYOR  
 COLORADO REGISTRATION NUMBER 38512

**NOTICE:**  
 ACCORDING TO COLORADO STATE LAW YOU MUST COMMENCE ANY LEGAL ACTION BASED UPON ANY DEFECT IN THIS SURVEY WITHIN THREE YEARS AFTER YOU FIRST DISCOVER SUCH DEFECT. IN NO EVENT MAY ANY ACTION BASED UPON ANY DEFECT IN THIS SURVEY BE COMMENCED MORE THAN TEN YEARS FROM THE DATE ON THE CERTIFICATION SHOWN HEREON.



**NOTE:**  
 MAGNETIC NORTH IS CURRENT AS OF 12/2/2016.  
 MAGNETIC NORTH CHANGES WEST 0°06' PER YEAR.

**NOTES:**

- ▲ INDICATES SECTION CORNER
- INDICATES CALCULATED CORNER
- ELEVATION BASED ON NAVD88 (GEOID12B)
- BASIS OF BEARING DERIVED FROM COLORADO COORDINATE SYSTEM OF 1983 NORTH ZONE.
- ALL MEASURED DISTANCES ARE GRID.
- COMBINED SCALE FACTOR: .99972501 CALCULATED FROM THE W. 1/4 CORNER OF SECTION 29, T3N, R65W
- OPERATOR: ROB WILSON / PDOP = 1.2
- SEE ADDENDUM TO WELL LOCATION CERTIFICATE FOR EXISTING IMPROVEMENTS WITHIN 500' OF THE WELL PAD.
- WELL FOOTAGES ARE MEASURED AT RIGHT ANGLES TO THE SECTION LINES.
- THE BOTTOM OF HOLE BEARS S01°08'00"E, 6116' FROM THE HEEL LOCATION.

**WELL PAD - RW 29N-5HZ**

RW 29N-5HZ  
 LOCATION CERTIFICATE  
 441' FSL & 1719' FWL SESW (SURFACE)  
 461' FSL & 1334' FWL SESW (HEEL)  
 LOCATED IN SECTION 29  
 T3N, R65W, 6TH P.M.  
 368' FNL & 1442' FWL NENW (BOTTOM)  
 LOCATED IN SECTION 5  
 T2N, R65W, 6TH P.M.  
 WELD COUNTY, COLORADO

**Kerr-McGee Oil & Gas Onshore L.P.**  
 1099 18th Street  
 Denver, Colorado 80202



**CONSULTING, LLC**

**SHERIDAN OFFICE**  
 1095 Saberton Avenue  
 Sheridan, Wyoming 82801  
 Phone 307-674-0609

**LOVELAND OFFICE**  
 1635 Foxtrail Drive, Suite 204  
 Loveland, Colorado 80538  
 Phone 970-776-4331

DRAFTED BY:	LMO	CHECKED BY:	RKF	SHEET NO:	3
DATE DRAFTED:	1/23/17	DATE SURVEYED:	12/1/16	3 OF 3	
REVISED:		FILE NAME:	16-147		