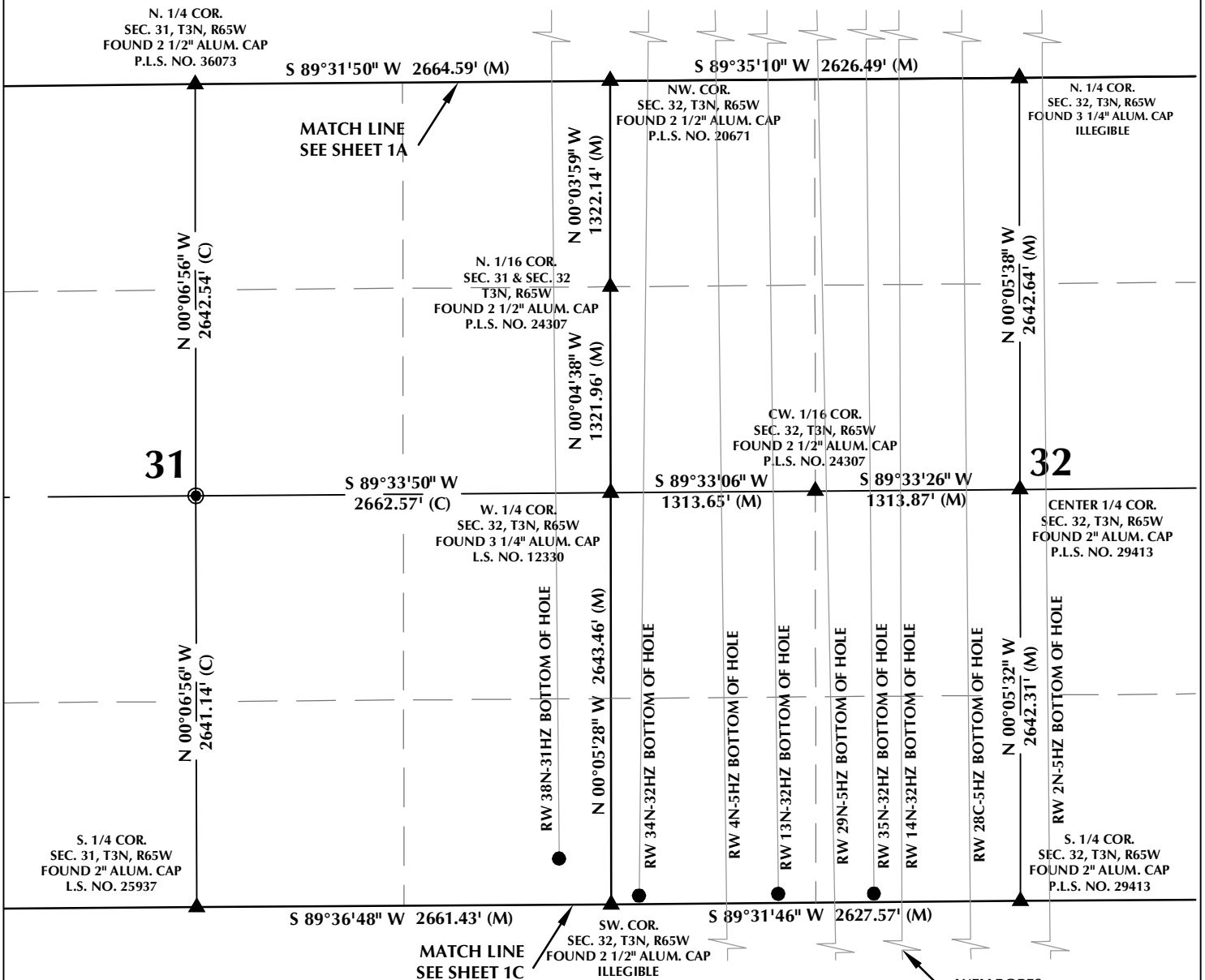




# MULTI-WELL PLAN SECTIONS 31 & 32, T3N, R65W



**WELL NOTES:**

- RW 38N-31HZ  
SURFACE: 442' FSL, 1614' FWL, SEC. 29, T3N, R65W  
BOTTOM HOLE: 296' FSL, 335' FEL, SEC. 31, T3N, R65W
- RW 30N-29HZ  
SURFACE: 442' FSL, 1629' FWL, SEC. 29, T3N, R65W  
BOTTOM HOLE: 54' FNL, 123' FWL, SEC. 29, T3N, R65W
- RW 34N-32HZ  
SURFACE: 441' FSL, 1659' FWL, SEC. 29, T3N, R65W  
BOTTOM HOLE: 55' FSL, 178' FWL, SEC. 32, T3N, R65W
- RW 4N-5HZ  
SURFACE: 441' FSL, 1674' FWL, SEC. 29, T3N, R65W  
BOTTOM HOLE: 366' FNL, 747' FWL, SEC. 5, T2N, R65W
- RW 13N-32HZ  
SURFACE: 441' FSL, 1704' FWL, SEC. 29, T3N, R65W  
BOTTOM HOLE: 59' FSL, 1072' FWL, SEC. 32, T3N, R65W
- RW 29N-5HZ  
SURFACE: 441' FSL, 1719' FWL, SEC. 29, T3N, R65W  
BOTTOM HOLE: 368' FNL, 1442' FWL, SEC. 5, T2N, R65W
- RW 29N-29HZ  
SURFACE: 441' FSL, 1749' FWL, SEC. 29, T3N, R65W  
BOTTOM HOLE: 56' FNL, 1564' FWL, SEC. 29, T3N, R65W
- RW 35N-32HZ  
SURFACE: 441' FSL, 1764' FWL, SEC. 29, T3N, R65W  
BOTTOM HOLE: 56' FSL, 1686' FWL, SEC. 32, T3N, R65W

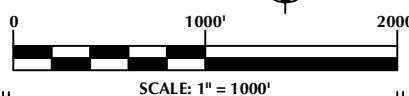
**RW 14N-32HZ**

- SURFACE: 441' FSL, 1794' FWL, SEC. 29, T3N, R65W  
BOTTOM HOLE: 370' FNL, 1869' FWL, SEC. 5, T2N, R65W
- RW 28C-5HZ  
SURFACE: 440' FSL, 1809' FWL, SEC. 29, T3N, R65W  
BOTTOM HOLE: 370' FNL, 2310' FWL, SEC. 5, T2N, R65W
- RW 2N-5HZ  
SURFACE: 440' FSL, 1839' FWL, SEC. 29, T3N, R65W  
BOTTOM HOLE: 372' FNL, 2435' FWL, SEC. 5, T2N, R65W
- RW 28N-29HZ  
SURFACE: 440' FSL, 1854' FWL, SEC. 29, T3N, R65W  
BOTTOM HOLE: 57' FNL, 2407' FWL, SEC. 29, T3N, R65W

**WELLS CONTINUE INTO SECTION 5, T2N, R65W**

**NOTES:**

1. ▲ INDICATES SECTION CORNER
2. ● INDICATES CALCULATED CORNER
3. BASIS OF BEARING DERIVED FROM COLORADO COORDINATE SYSTEM OF 1983 NORTH ZONE.
4. ALL MEASURED DISTANCES ARE GRID.
5. COMBINED SCALE FACTOR: .99972501 CALCULATED FROM THE W. 1/4 CORNER OF SECTION 29, T3N, R65W
6. WELL FOOTAGES ARE MEASURED AT RIGHT ANGLES TO THE SECTION LINES.



**WELL PAD - RW 29N-5HZ**

MULTI-WELL PLAN  
RW 38N-31HZ, RW 30N-29HZ, RW 34N-32HZ,  
RW 4N-5HZ, RW 13N-32HZ, RW 29N-5HZ,  
RW 29N-29HZ, RW 35N-32HZ, RW 14N-32HZ,  
RW 28C-5HZ, RW 2N-5HZ & RW 28N-29HZ  
LOCATED IN SECTIONS 29, 30, 31 & 32, T3N, R65W, 6TH P.M. &  
LOCATED IN SECTION 5, T2N, R65W, 6TH P.M.  
WELD COUNTY, COLORADO

**Kerr-McGee Oil &  
Gas Onshore L.P.**  
1099 18th Street  
Denver, Colorado 80202



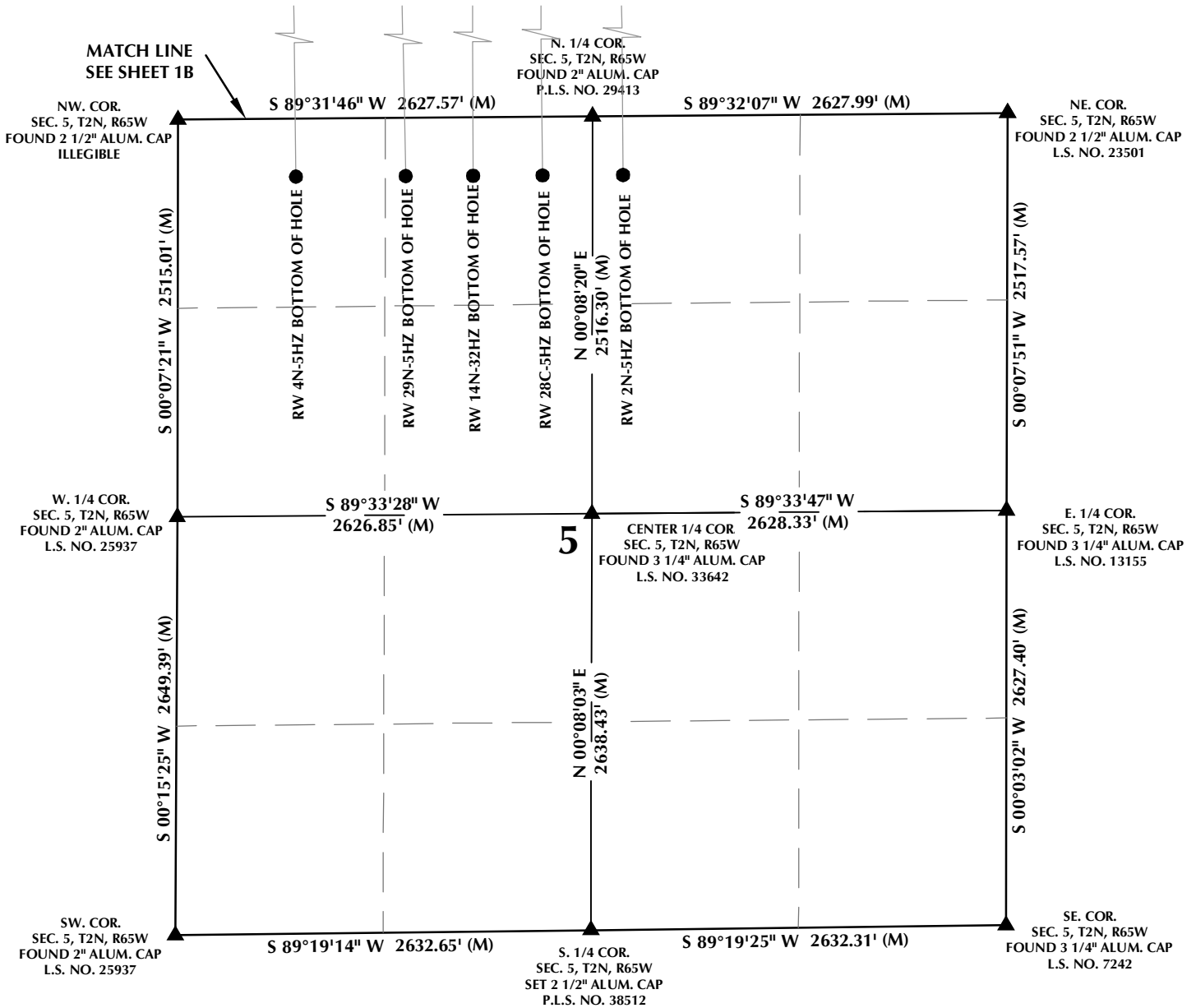
**CONSULTING, LLC**

**SHERIDAN OFFICE**  
1095 Saberton Avenue  
Sheridan, Wyoming 82801  
Phone 307-674-0609

**LOVELAND OFFICE**  
1635 Foxtrail Drive, Suite 204  
Loveland, Colorado 80538  
Phone 970-776-4331

DRAFTED BY: LMO	CHECKED BY: RKF	SHEET NO: <b>1B</b> 1B OF 1
DATE DRAFTED: 1/18/17	DATE SURVEYED: 12/1/16	
REVISED:	FILE NAME: 16-147	

# MULTI-WELL PLAN SECTION 5, T2N, R65W



**WELL NOTES:**

RW 38N-31HZ  
 SURFACE: 442' FSL, 1614' FWL, SEC. 29, T3N, R65W  
 BOTTOM HOLE: 296' FSL, 335' FEL, SEC. 31, T3N, R65W

RW 30N-29HZ  
 SURFACE: 442' FSL, 1629' FWL, SEC. 29, T3N, R65W  
 BOTTOM HOLE: 54' FNL, 1231' FWL, SEC. 29, T3N, R65W

RW 34N-32HZ  
 SURFACE: 441' FSL, 1659' FWL, SEC. 29, T3N, R65W  
 BOTTOM HOLE: 55' FSL, 178' FWL, SEC. 32, T3N, R65W

RW 4N-5HZ  
 SURFACE: 441' FSL, 1674' FWL, SEC. 29, T3N, R65W  
 BOTTOM HOLE: 366' FNL, 747' FWL, SEC. 5, T2N, R65W

RW 13N-32HZ  
 SURFACE: 441' FSL, 1704' FWL, SEC. 29, T3N, R65W  
 BOTTOM HOLE: 59' FSL, 1072' FWL, SEC. 32, T3N, R65W

RW 29N-5HZ  
 SURFACE: 441' FSL, 1719' FWL, SEC. 29, T3N, R65W  
 BOTTOM HOLE: 368' FNL, 1442' FWL, SEC. 5, T2N, R65W

RW 29N-29HZ  
 SURFACE: 441' FSL, 1749' FWL, SEC. 29, T3N, R65W  
 BOTTOM HOLE: 56' FNL, 1564' FWL, SEC. 29, T3N, R65W

RW 35N-32HZ  
 SURFACE: 441' FSL, 1764' FWL, SEC. 29, T3N, R65W  
 BOTTOM HOLE: 56' FSL, 1686' FWL, SEC. 32, T3N, R65W

RW 14N-32HZ  
 SURFACE: 441' FSL, 1794' FWL, SEC. 29, T3N, R65W  
 BOTTOM HOLE: 370' FNL, 1869' FWL, SEC. 5, T2N, R65W

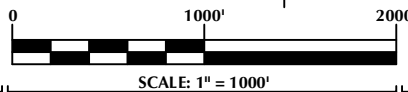
RW 28C-5HZ  
 SURFACE: 440' FSL, 1809' FWL, SEC. 29, T3N, R65W  
 BOTTOM HOLE: 370' FNL, 2310' FWL, SEC. 5, T2N, R65W

RW 2N-5HZ  
 SURFACE: 440' FSL, 1839' FWL, SEC. 29, T3N, R65W  
 BOTTOM HOLE: 372' FNL, 2435' FEL, SEC. 5, T2N, R65W

RW 28N-29HZ  
 SURFACE: 440' FSL, 1854' FWL, SEC. 29, T3N, R65W  
 BOTTOM HOLE: 57' FNL, 2407' FEL, SEC. 29, T3N, R65W

**NOTES:**

- ▲ INDICATES SECTION CORNER
- INDICATES CALCULATED CORNER
- BASIS OF BEARING DERIVED FROM COLORADO COORDINATE SYSTEM OF 1983 NORTH ZONE.
- ALL MEASURED DISTANCES ARE GRID. COMBINED SCALE FACTOR: .99972501 CALCULATED FROM THE W. 1/4 CORNER OF SECTION 29, T3N, R65W
- WELL FOOTAGES ARE MEASURED AT RIGHT ANGLES TO THE SECTION LINES.



**WELL PAD - RW 29N-5HZ**

MULTI-WELL PLAN  
 RW 38N-31HZ, RW 30N-29HZ, RW 34N-32HZ,  
 RW 4N-5HZ, RW 13N-32HZ, RW 29N-5HZ,  
 RW 29N-29HZ, RW 35N-32HZ, RW 14N-32HZ,  
 RW 28C-5HZ, RW 2N-5HZ & RW 28N-29HZ  
 LOCATED IN SECTIONS 29, 30, 31 & 32, T3N, R65W, 6TH P.M. &  
 LOCATED IN SECTION 5, T2N, R65W, 6TH P.M.  
 WELD COUNTY, COLORADO

**Kerr-McGee Oil &  
 Gas Onshore L.P.**  
 1099 18th Street  
 Denver, Colorado 80202



**CONSULTING, LLC**

**SHERIDAN OFFICE**  
 1095 Saberton Avenue  
 Sheridan, Wyoming 82801  
 Phone 307-674-0609

**LOVELAND OFFICE**  
 1635 Foxtrail Drive, Suite 204  
 Loveland, Colorado 80538  
 Phone 970-776-4331

DRAFTED BY: LMO	CHECKED BY: RKF	SHEET NO: <b>1C</b> 1C OF 1
DATE DRAFTED: 1/18/17	DATE SURVEYED: 12/1/16	
REVISED:	FILE NAME: 16-147	