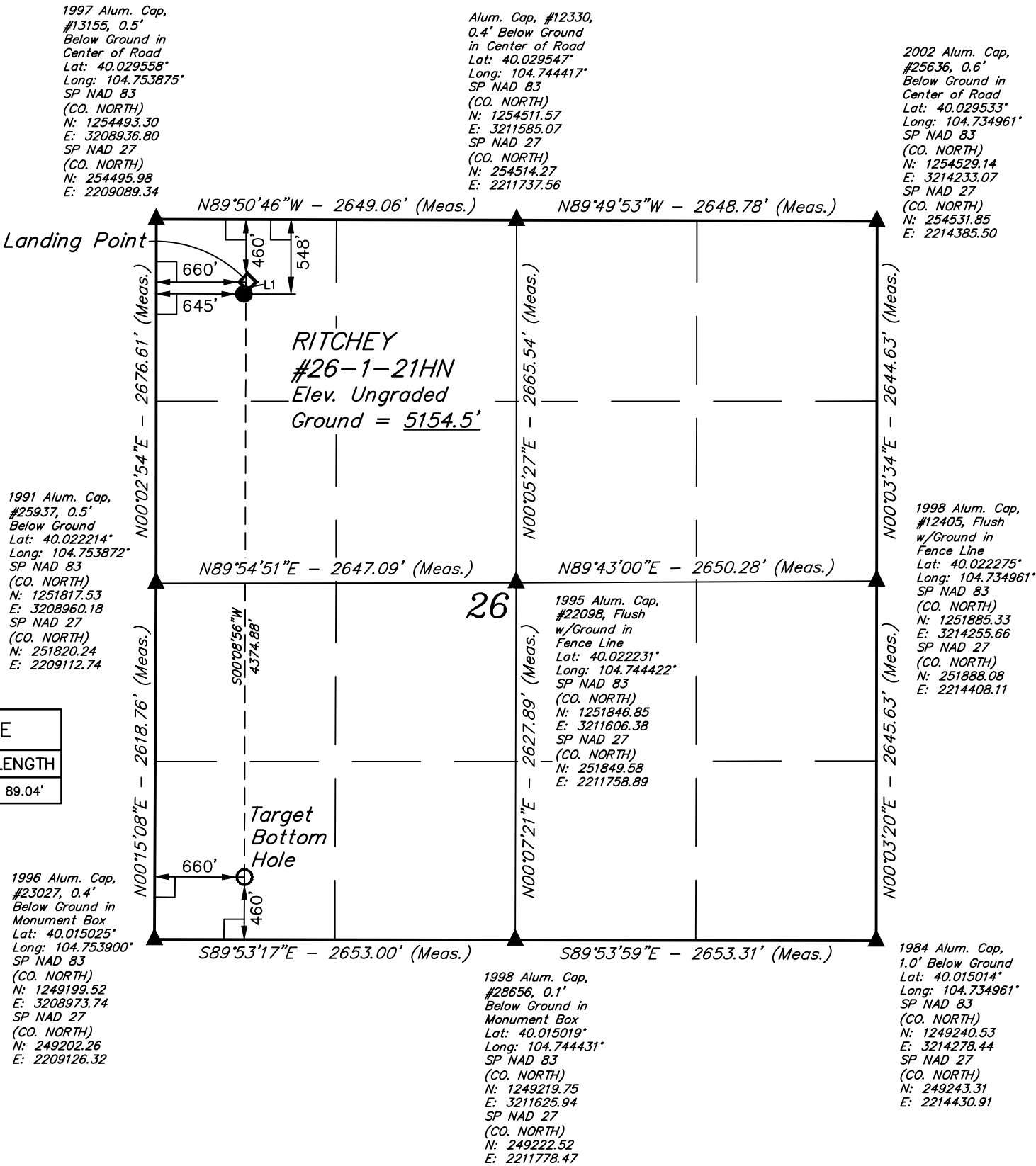


LEGEND:

- = 90° SYMBOL
- = PROPOSED WELLHEAD.
- = TARGET BOTTOM HOLE.
- = LANDING POINT.
- = SECTION CORNERS LOCATED. (NAD 83)

T1N, R66W, 6th P.M.



NAD 83 (SURFACE LOCATION)	NAD 83 (LANDING POINT)	NAD 83 (TARGET BOTTOM HOLE)
LATITUDE = 40°01'40.99" (40.028053)	LATITUDE = 40°01'41.86" (40.028294)	LATITUDE = 40°00'58.63" (40.016286)
LONGITUDE = 104°45'05.65" (104.751569)	LONGITUDE = 104°45'05.46" (104.751517)	LONGITUDE = 104°45'05.54" (104.751539)
NAD 27 (SURFACE LOCATION)	NAD 27 (LANDING POINT)	NAD 27 (TARGET BOTTOM HOLE)
LATITUDE = 40°01'41.05" (40.028069)	LATITUDE = 40°01'41.92" (40.028311)	LATITUDE = 40°00'58.69" (40.016303)
LONGITUDE = 104°45'03.76" (104.751044)	LONGITUDE = 104°45'03.57" (104.750992)	LONGITUDE = 104°45'03.65" (104.751014)
STATE PLANE NAD 83 (CO. NORTH)	STATE PLANE NAD 83 (CO. NORTH)	STATE PLANE NAD 83 (CO. NORTH)
N: 1253950.12 E: 3209586.39	N: 1254037.99 E: 3209600.62	N: 1249664.42 E: 3209631.16
STATE PLANE NAD 27 (CO. NORTH)	STATE PLANE NAD 27 (CO. NORTH)	STATE PLANE NAD 27 (CO. NORTH)
N: 253952.81 E: 2209738.92	N: 254040.69 E: 2209753.15	N: 249667.17 E: 2209783.73

CERTIFICATE

THIS IS TO CERTIFY THAT THE ABOVE PLAT WAS PREPARED FROM FIELD NOTES OF ACTUAL SURVEYS MADE BY ME OR UNDER MY SUPERVISION, AND THAT THE SAME ARE TRUE AND CORRECT TO THE BEST OF MY KNOWLEDGE AND BELIEF.



REV: 1 01-31-17 M.D. (SHL CHANGE)

BASIS OF BEARINGS

BASIS OF BEARINGS IS A G.P.S. OBSERVATION

BASIS OF ELEVATION

HUBBS TRIANGULATION STATION LOCATED IN THE NE 1/4 OF SECTION 21, T1N, R64W, 6th P.M., TAKEN FROM THE KEENESBURG, QUADRANGLE, COLORADO, WELD COUNTY, 7.5 MINUTE QUAD (TOPOGRAPHIC MAP) PUBLISHED BY THE UNITED STATES DEPARTMENT OF THE INTERIOR, GEOLOGICAL SURVEY. SAID ELEVATION IS MARKED AS BEING 5168 FEET.



UELS, LLC  
Corporate Office \* 85 South 200 East  
Vernal, UT 84078 \* (435) 789-1017



WARD PETROLEUM CORPORATION

RITCHEY #26-1-21HN  
NW 1/4 NW 1/4, SECTION 26, T1N, R66W, 6th P.M.  
WELD COUNTY, COLORADO

SURVEYED BY	GREG WEIMER, C.M.	01-04-17	SCALE
DRAWN BY	K.B.	01-10-17	1" = 1000'

WELL LOCATION PLAT