

LEGEND:

- = 90° SYMBOL
- = PROPOSED WELLHEAD.
- = TARGET BOTTOM HOLE.
- = LANDING POINT.
- = SECTION CORNERS LOCATED. (NAD 83)

T1N, R66W, 6th P.M.

1997 Alum. Cap,  
#13155, 0.5'  
Below Ground in  
Center of Road  
Lat: 40.029558°  
Long: 104.753875°  
SP NAD 83  
(CO. NORTH)  
N: 1254493.30  
E: 3208936.80  
SP NAD 27  
(CO. NORTH)  
N: 254495.98  
E: 2209089.34

Alum. Cap, #12330,  
0.4' Below Ground  
in Center of Road  
Lat: 40.029547°  
Long: 104.744417°  
SP NAD 83  
(CO. NORTH)  
N: 1254511.57  
E: 3211585.07  
SP NAD 27  
(CO. NORTH)  
N: 254514.27  
E: 2211737.56

2002 Alum. Cap,  
#25636, 0.6'  
Below Ground in  
Center of Road  
Lat: 40.029533°  
Long: 104.734961°  
SP NAD 83  
(CO. NORTH)  
N: 1254529.14  
E: 3214233.07  
SP NAD 27  
(CO. NORTH)  
N: 254531.85  
E: 2214385.50

1991 Alum. Cap,  
#25937, 0.5'  
Below Ground  
Lat: 40.022214°  
Long: 104.753872°  
SP NAD 83  
(CO. NORTH)  
N: 1251817.53  
E: 3208960.18  
SP NAD 27  
(CO. NORTH)  
N: 251820.24  
E: 2209112.74

1998 Alum. Cap,  
#12405, Flush  
w/Ground in  
Fence Line  
Lat: 40.022275°  
Long: 104.734961°  
SP NAD 83  
(CO. NORTH)  
N: 1251885.33  
E: 3214255.66  
SP NAD 27  
(CO. NORTH)  
N: 251888.08  
E: 2214408.11

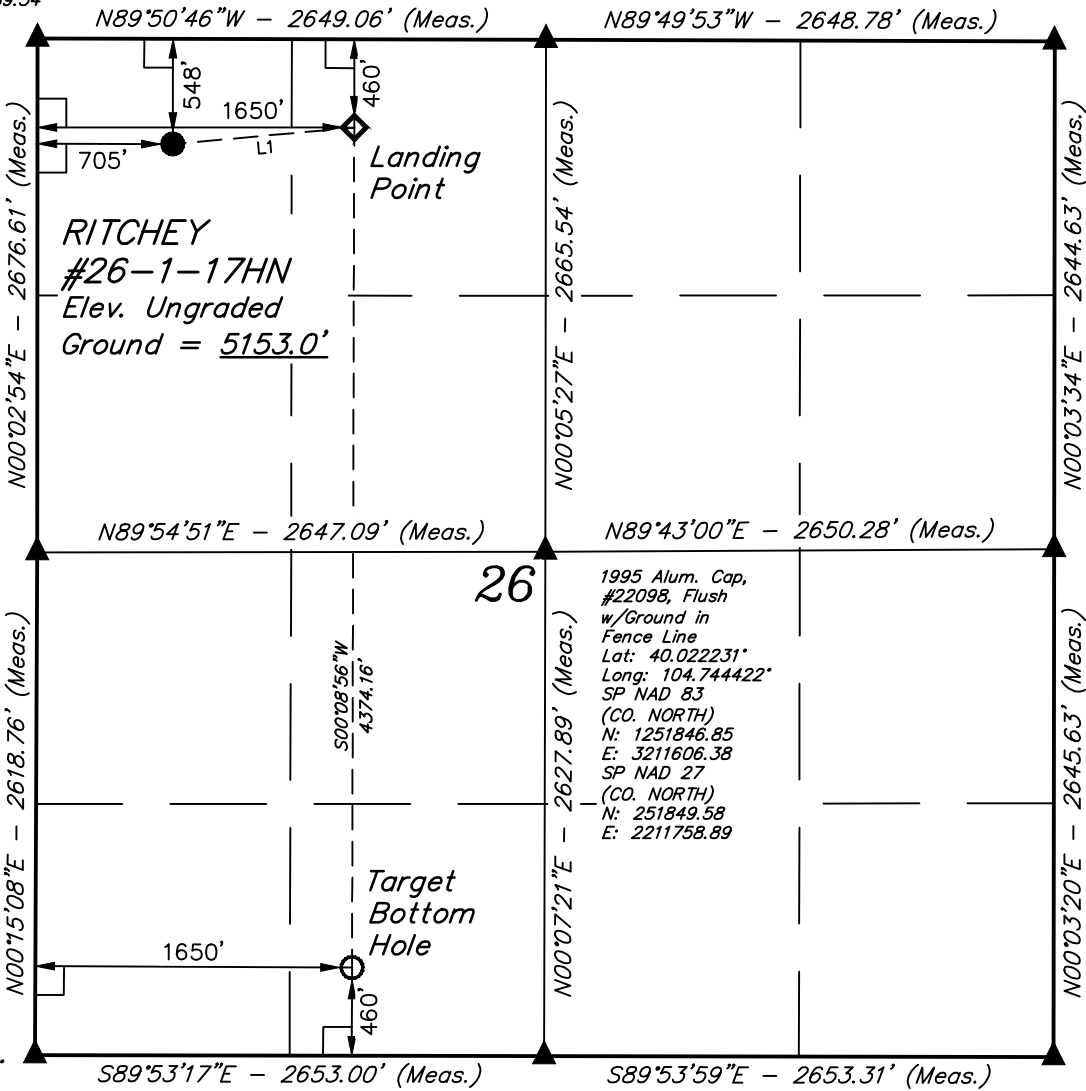
1995 Alum. Cap,  
#22098, Flush  
w/Ground in  
Fence Line  
Lat: 40.022231°  
Long: 104.744422°  
SP NAD 83  
(CO. NORTH)  
N: 1251846.85  
E: 3211606.38  
SP NAD 27  
(CO. NORTH)  
N: 251849.58  
E: 2211758.89

1984 Alum. Cap,  
1.0' Below Ground  
Lat: 40.015014°  
Long: 104.734961°  
SP NAD 83  
(CO. NORTH)  
N: 1249240.53  
E: 3214278.44  
SP NAD 27  
(CO. NORTH)  
N: 249243.31  
E: 2214430.91

1998 Alum. Cap,  
#28656, 0.1'  
Below Ground in  
Monument Box  
Lat: 40.015019°  
Long: 104.744431°  
SP NAD 83  
(CO. NORTH)  
N: 1249219.75  
E: 3211625.94  
SP NAD 27  
(CO. NORTH)  
N: 249222.52  
E: 2211778.47

1996 Alum. Cap,  
#23027, 0.4'  
Below Ground in  
Monument Box  
Lat: 40.015025°  
Long: 104.753900°  
SP NAD 83  
(CO. NORTH)  
N: 1249199.52  
E: 3208973.74  
SP NAD 27  
(CO. NORTH)  
N: 249202.26  
E: 2209126.32

LINE TABLE		
LINE	DIRECTION	LENGTH
L1	N84°50'23"E	948.88'



NAD 83 (SURFACE LOCATION)	NAD 83 (LANDING POINT)	NAD 83 (TARGET BOTTOM HOLE)
LATITUDE = 40°01'40.99" (40.028053)	LATITUDE = 40°01'41.84" (40.028289)	LATITUDE = 40°00'58.62" (40.016283)
LONGITUDE = 104°45'04.88" (104.751356)	LONGITUDE = 104°44'52.74" (104.747983)	LONGITUDE = 104°44'52.82" (104.748006)
NAD 27 (SURFACE LOCATION)	NAD 27 (LANDING POINT)	NAD 27 (TARGET BOTTOM HOLE)
LATITUDE = 40°01'41.05" (40.028069)	LATITUDE = 40°01'41.90" (40.028306)	LATITUDE = 40°00'58.68" (40.016300)
LONGITUDE = 104°45'02.99" (104.750831)	LONGITUDE = 104°44'50.85" (104.747458)	LONGITUDE = 104°44'50.93" (104.747481)
STATE PLANE NAD 83 (CO. NORTH)	STATE PLANE NAD 83 (CO. NORTH)	STATE PLANE NAD 83 (CO. NORTH)
N: 1253950.45 E: 3209646.42	N: 1254044.82 E: 3210590.33	N: 1249671.97 E: 3210620.86
STATE PLANE NAD 27 (CO. NORTH)	STATE PLANE NAD 27 (CO. NORTH)	STATE PLANE NAD 27 (CO. NORTH)
N: 253953.15 E: 2209798.94	N: 254047.52 E: 2210742.84	N: 249674.72 E: 2210773.41

CERTIFICATE  
THIS IS TO CERTIFY THAT THE ABOVE PLAT WAS PREPARED FROM FIELD  
NOTES OF ACTUAL SURVEYS MADE BY ME OR UNDER MY SUPERVISION  
AND THAT THE SAME ARE TRUE AND CORRECT TO THE BEST OF MY  
KNOWLEDGE AND BELIEF.



REGISTERED LAND SURVEYOR  
REGISTRATION NO. 28285  
STATE OF COLORADO

REV: 1 01-31-17 M.D. (SHL CHANGE)

BASIS OF BEARINGS  
BASIS OF BEARINGS IS A G.P.S. OBSERVATION

BASIS OF ELEVATION

HUBBS TRIANGULATION STATION LOCATED IN THE NE 1/4 OF SECTION 21, T1N, R64W,  
6th P.M., TAKEN FROM THE KEENESBURG, QUADRANGLE, COLORADO, WELD COUNTY,  
7.5 MINUTE QUAD (TOPOGRAPHIC MAP) PUBLISHED BY THE UNITED STATES  
DEPARTMENT OF THE INTERIOR, GEOLOGICAL SURVEY. SAID ELEVATION IS MARKED  
AS BEING 5168 FEET.



UELS, LLC  
Corporate Office \* 85 South 200 East  
Vernal, UT 84078 \* (435) 789-1017



WARD PETROLEUM CORPORATION

RITCHEY #26-1-17HN  
NW 1/4 NW 1/4, SECTION 26, T1N, R66W, 6th P.M.  
WELD COUNTY, COLORADO

SURVEYED BY	GREG WEIMER, C.M.	01-04-17	SCALE
DRAWN BY	K.B.	01-10-17	1" = 1000'

WELL LOCATION PLAT