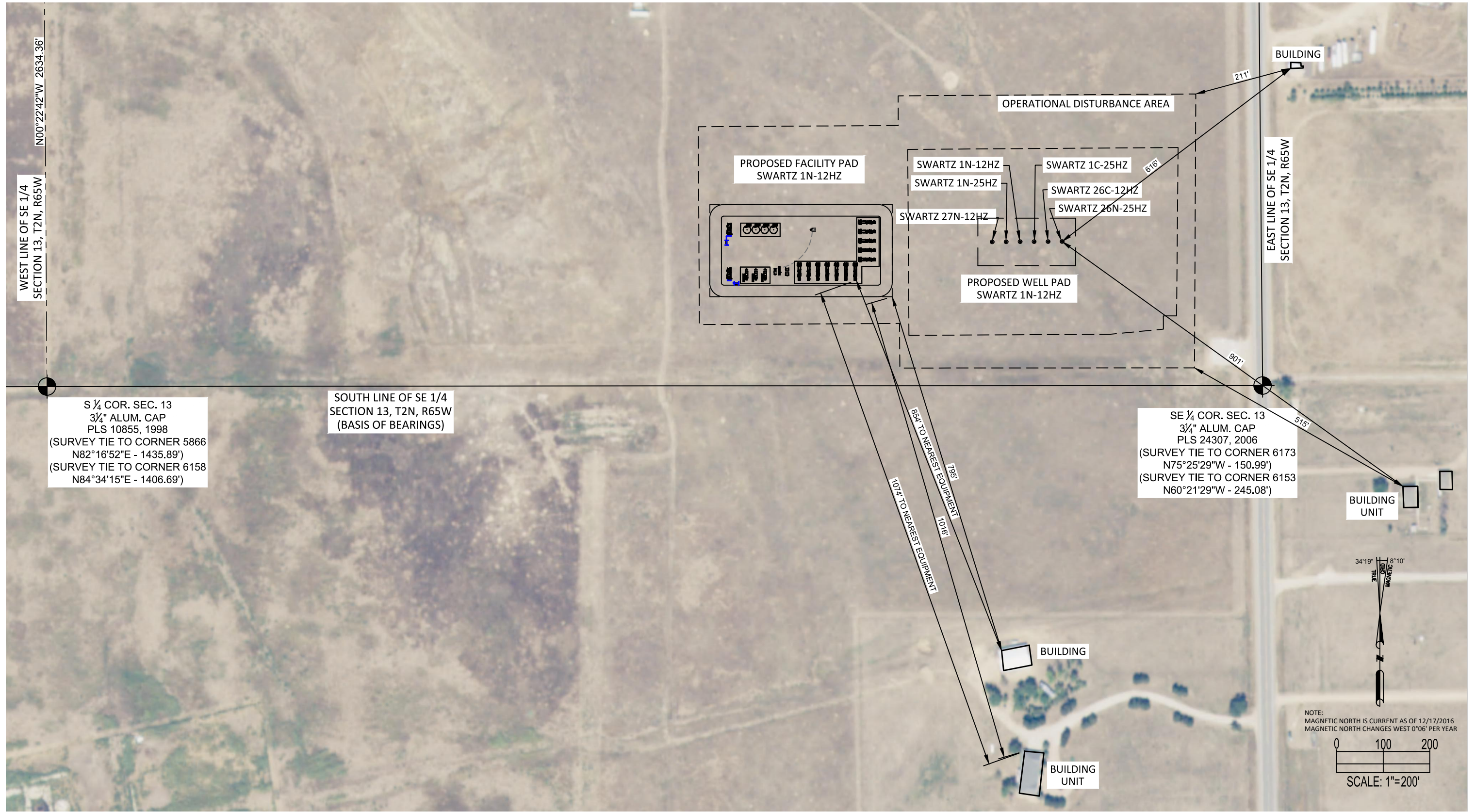


SWARTZ 1N-12HZ AERIAL FACILITY DRAWING



LEGEND

▭ = BUILDING

DATA SOURCES:

- AERIAL: NAIP 2015 WELD COUNTY

NOTES:

- EQUIPMENT PLACEMENT IS APPROXIMATE AND SUBJECT TO MINOR MODIFICATION DUE TO SPECIFIC CIRCUMSTANCES.
- THIS EXHIBIT IS NOT A PROPERTY BOUNDARY SURVEY AND CANNOT BE RELIED UPON TO DETERMINE OWNERSHIP.
- BASIS OF BEARINGS DERIVED FROM COLORADO COORDINATE SYSTEM OF 1983 NORTH ZONE.
- ALL MEASURED DISTANCES ARE GRID.
- COMBINED SCALE FACTOR: 0.999727846 (CALCULATED FROM THE C-E ¼ CORNER OF SECTION 24).
- DRAWING N/E COORDINATES ARE BASED ON COLORADO COORDINATE SYSTEM OF 1983 NORTH ZONE.

PREPARED BY:



FIELD DATE:
12-29-16

DRAWING DATE:
01-05-17

BY:
MDC

CHECKED BY:
MLP

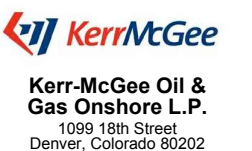
SITE NAME:

SWARTZ 1N-12HZ

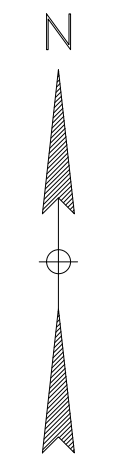
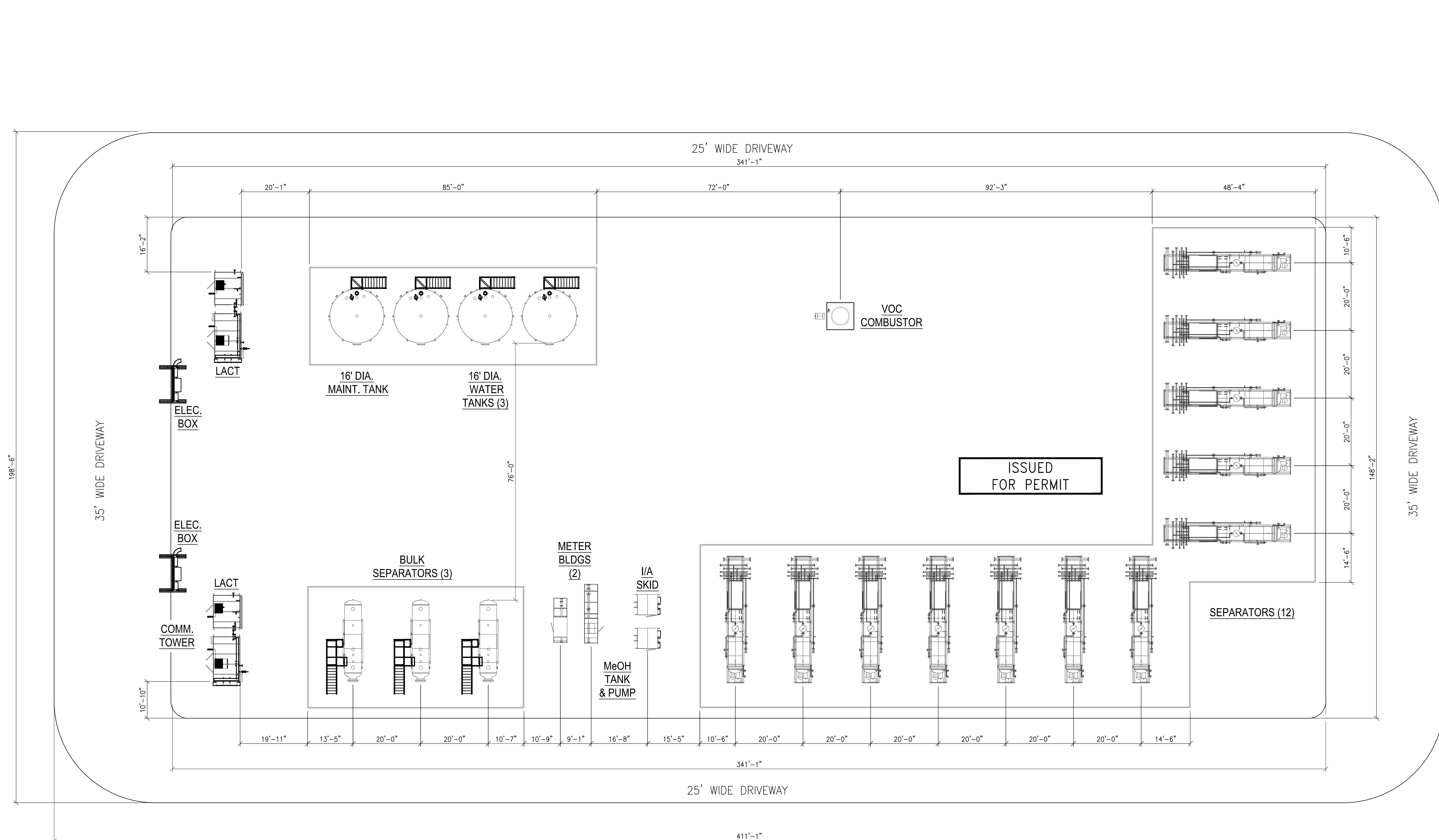
SURFACE LOCATION:

SE 1/4 SE 1/4 SEC. 13, T2N, R65W, 6TH P.M.
WELD COUNTY, COLORADO

PREPARED FOR:



THIS DRAWING AND THE DESIGN IT COVERS ARE CONFIDENTIAL AND REMAIN THE PROPERTY OF ANADARKO PETROLEUM CORPORATION AND SHALL NOT BE DISCLOSED TO OTHERS OR REPRODUCED IN ANY MANNER OR USED FOR ANY PURPOSE WHATSOEVER EXCEPT BY WRITTEN PERMISSION BY THE OWNER.



NOTES:

DWG. NO.	TITLE

NO.	DESCRIPTION	BY	DATE	CHK.	DATE	APPR.	DATE

SWARTZ

PERMIT PLOT PLAN PRODUCTION FACILITIES W/ EQUIPMENT LOCATION		
DRAWN BY: CBG	CREATION DATE: 11/17/16	
APPROVED: JTK	APPR. DATE: 11/17/16	
DWG. No.:	X20321-STOR-01-PP-2020 REV 1	SHEET No. 1 OF 1
SCALE: 1"=15'-0"		

FILE LOCATION: N:\Projects\Anadarko\4081 - 2015 Production Facilities\Drawings\Permit - CAD Drawings\20321-STOR-01-PP-2020 REV 1.dwg LAST SAVED: 12/23/2016 BY: Rocky Gossain PLOT STYLE: 11x17.rlb