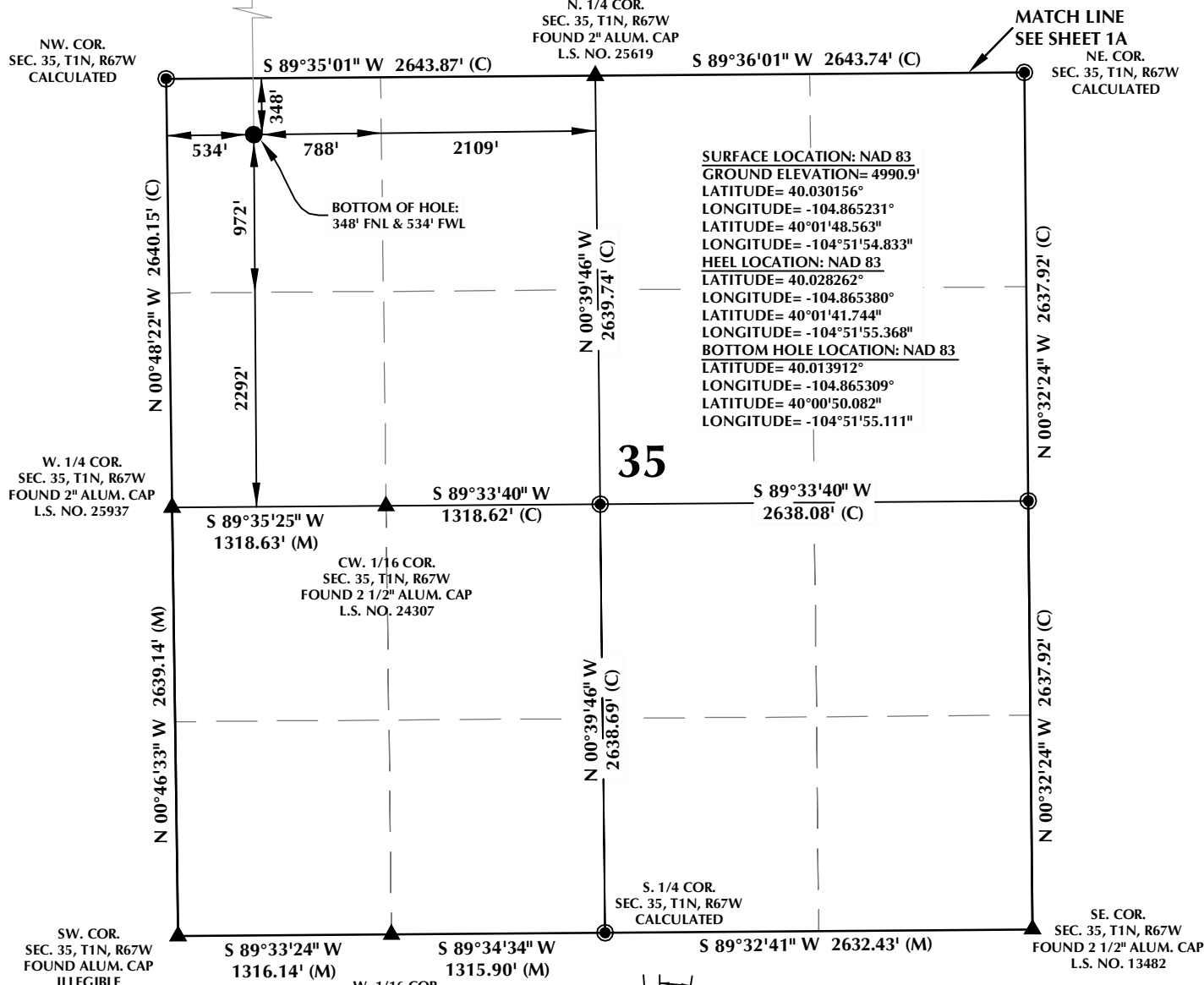


K:\ANADARKO\2015\2015_42_FLIP_FLOP_MESE_T1N_R67W_23\PLATS\PUMA\PLATS.dwg, 2/13/2017 8:20:10 AM, randy

T1N, R67W

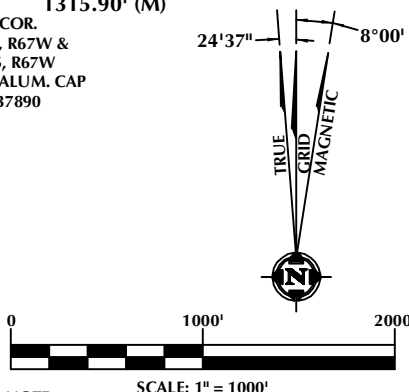


CERTIFICATE OF SURVEYOR:

THIS IS TO CERTIFY THAT THE ABOVE PLAT WAS PREPARED FROM FIELD NOTES OF ACTUAL SURVEY MADE BY ME OR UNDER MY SUPERVISION, AND THAT THE SAME ARE TRUE AND CORRECT TO THE BEST OF MY KNOWLEDGE AND BELIEF. THIS CERTIFICATE DOES NOT REPRESENT A LAND SURVEY PLAT OR IMPROVEMENT SURVEY PLAT AS DEFINED BY C.R.S. 38-51-302 AND CANNOT BE RELIED UPON TO DETERMINE OWNERSHIP.

Randall K. French
 RANDALL K. FRENCH
 PROFESSIONAL LAND SURVEYOR
 COLORADO REGISTRATION NUMBER 38512

NOTICE:
 ACCORDING TO COLORADO STATE LAW YOU MUST COMMENCE ANY LEGAL ACTION BASED UPON ANY DEFECT IN THIS SURVEY WITHIN THREE YEARS AFTER YOU FIRST DISCOVER SUCH DEFECT. IN NO EVENT MAY ANY ACTION BASED UPON ANY DEFECT IN THIS SURVEY BE COMMENCED MORE THAN TEN YEARS FROM THE DATE ON THE CERTIFICATION SHOWN HEREON.



NOTES:

- ▲ INDICATES SECTION CORNER
- INDICATES CALCULATED CORNER
- ELEVATION BASED ON NAVD88 (GEOID09)
- BASIS OF BEARING DERIVED FROM COLORADO COORDINATE SYSTEM OF 1983 NORTH ZONE.
- ALL MEASURED DISTANCES ARE GRID. COMBINED SCALE FACTOR: .99972876 CALCULATED FROM THE S. 1/4 CORNER OF SECTION 23, T1N, R67W OPERATOR: ROB WILSON / PDOP = 1.2
- SEE ADDENDUM TO WELL LOCATION CERTIFICATE FOR EXISTING IMPROVEMENTS WITHIN 500' OF THE WELL PAD.
- WELL FOOTAGES ARE MEASURED AT RIGHT ANGLES TO THE SECTION LINES.
- THE BOTTOM OF HOLE BEARS S02°08'28"E, 5165' FROM THE HEEL LOCATION.

WELL PAD - PUMA 4C-14HZ

PUMA FED 5S-35HZ
 WELL LOCATION CERTIFICATE
 290' FSL & 571' FWL SWSW (SURFACE)
 LOCATED IN SECTION 23
 400' FNL & 528' FWL NWNW (HEEL)
 LOCATED IN SECTION 26
 348' FNL & 534' FWL NWNW (BOTTOM)
 LOCATED IN SECTION 35
 T1N, R67W, 6TH P.M.
 WELD COUNTY, COLORADO

**Kerr-McGee Oil &
 Gas Onshore L.P.**
 1099 18th Street
 Denver, Colorado 80202



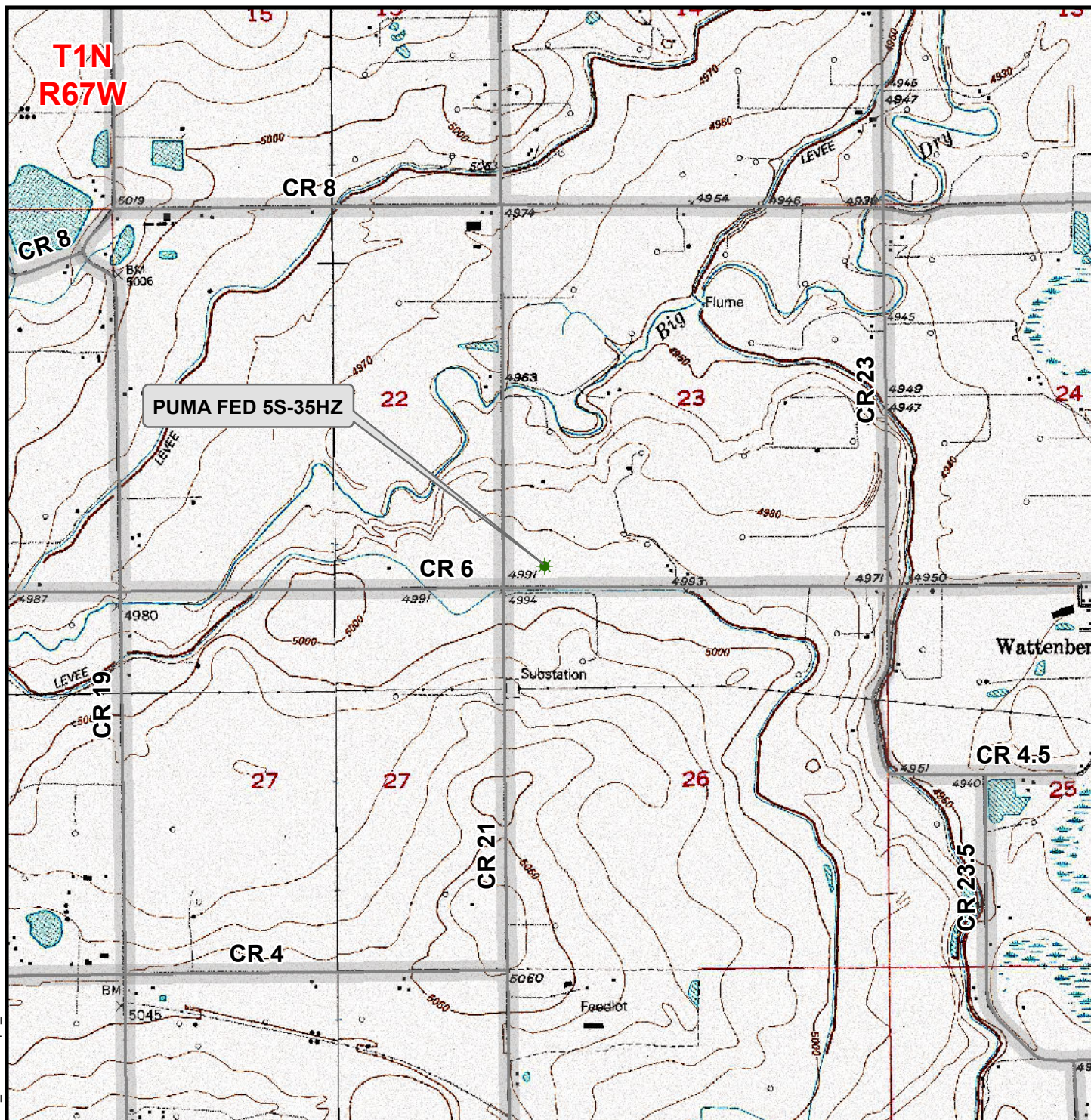
CONSULTING, LLC

SHERIDAN OFFICE
 1095 Saberton Avenue
 Sheridan, Wyoming 82801
 Phone 307-674-0609

LOVELAND OFFICE
 1635 Foxtrail Drive, Suite 204
 Loveland, Colorado 80538
 Phone 970-776-4331

DRAFTED BY:	LMO	CHECKED BY:	RKF	SHEET NO:
DATE DRAFTED:	8/19/15	DATE SURVEYED:	5/7/15	2
REVISED:	2/13/17	FILE NAME:	15-42	2 OF 2

K:\ANADARKO\2015\2015_42_FLIP_FLOP_MEESE_T1N_R67W_23\GIS\Maps_ABC\Puma 4C-14HZ\PumaFed 5S-35HZ.mxd 8/20/2015 10:51:07 AM



Legend

- Well - Federal - Proposed (Green star symbol)
- Well - Fee - Proposed (Red star symbol)
- Road - Primitive - Existing (Dashed line)
- Road - Improved - Existing (Thin solid line)
- Road - County - Existing (Thick solid line)
- Road - Highway - Existing (Thick solid line with double yellow lines)

WELL PAD - PUMA 4C-14HZ
GENERAL LOCATION MAP
PUMA FED 5S-35HZ
LOCATED IN SECTION 23
T1N, R67W, 6th P.M.
WELD COUNTY, COLORADO

**Kerr-McGee Oil &
Gas Onshore L.P.**

1099 18th Street
Denver, Colorado 80202



CONSULTING, LLC

SHERIDAN OFFICE
1095 Saberton Avenue
Sheridan, Wyoming 82801
Phone 307-674-0609

LOVELAND OFFICE
1635 Foxtail Drive, Suite 204
Loveland, Colorado 80538
Phone 970-776-4331



SCALE: 1" = 2,000ft

NAD83 CO-Nft

DRAWN: JELO

DATE: 31 July 2015

REVISED:

DATE: