

HALLIBURTON

iCem[®] Service

TEP ROCKY MOUNTAIN LLC

For: Abe Alexander & Lynn Cass

Date: Thursday, December 01, 2016

RU 14-7 Surface PJR

API/UWI #: 05-045-23259-00

Sincerely,

Grand Junction Cement Engineering

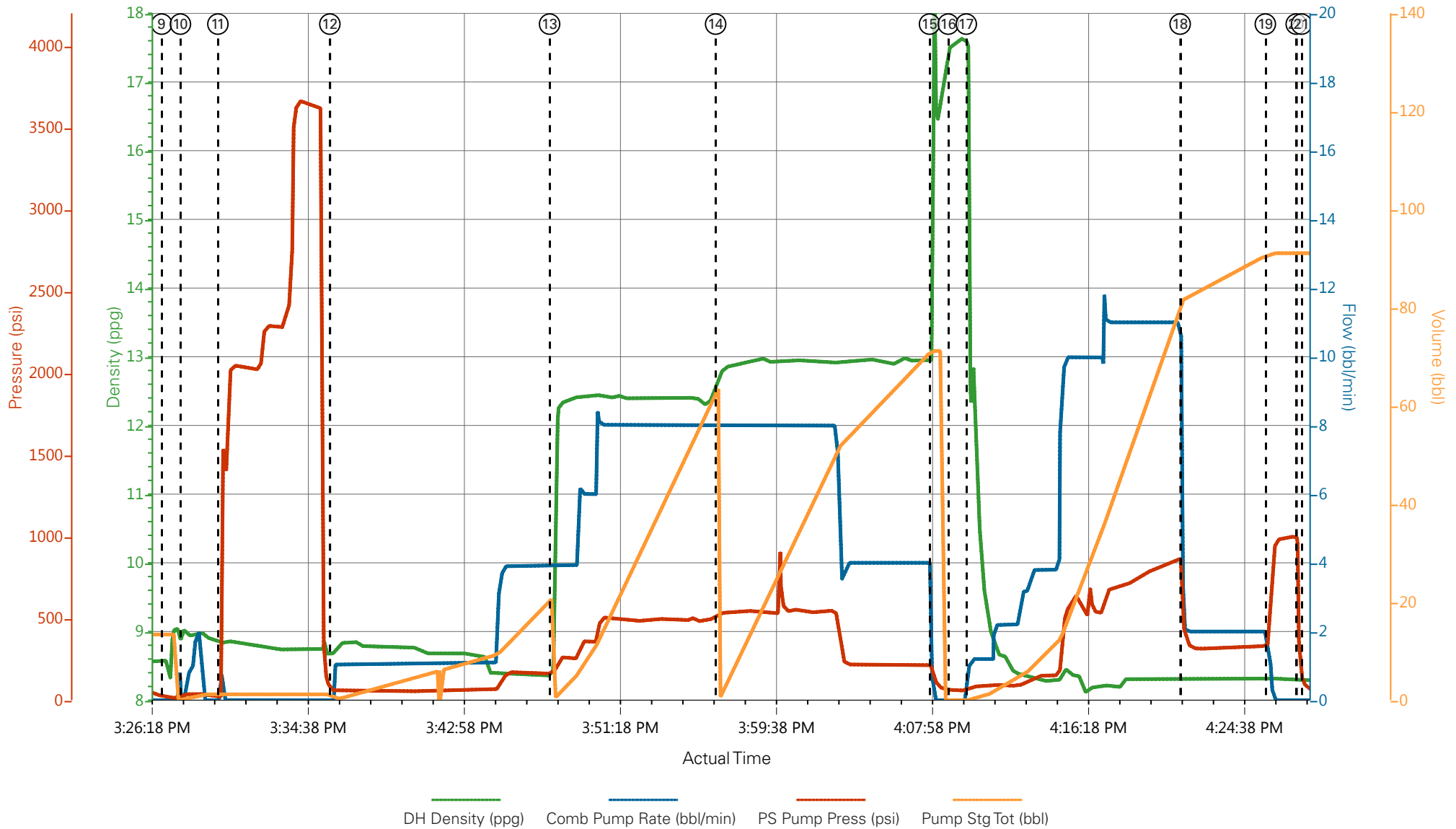
1.0 Real-Time Job Summary

1.1 Job Event Log

Type	Seq. No.	Graph Label	Date	Time	Source	DH Density <i>(ppg)</i>	Comb Pump Rate <i>(bbl/min)</i>	PS Pump Press <i>(psi)</i>	Pump Stg Tot <i>(bbl)</i>	Comments
Event	1	Call Out	12/1/2016	05:45:00	USER					Requested on Location @ 10:30
Event	2	Pre-Convoy Safety Meeting	12/1/2016	07:45:00	USER					
Event	3	Crew Leave Yard	12/1/2016	08:00:00	USER					1 Elite, 1 660, 1 pickup
Event	4	Arrive at Location from Service Center	12/1/2016	10:00:00	USER					Rig pulling drill pipe
Event	5	Assessment Of Location Safety Meeting	12/1/2016	10:30:00	USER					JSA completed - Customer offered/received SDS - water test pH 7.0, Cl <200, temp 80 degrees
Event	6	Pre-Rig Up Safety Meeting	12/1/2016	10:45:00	USER					
Event	7	Rig-Up Equipment	12/1/2016	11:00:00	USER					1 hardline to standpipe, water hoses to upright and day tank, bulk hoses to silo and 660.
Event	8	Pre-Job Safety Meeting	12/1/2016	14:00:00	USER					All HES personnel, Rig crew, and Company Rep
Event	9	Start Job	12/1/2016	15:27:00	COM6					TD 1160', TP 1150, SJ 43.8', FC 1106.2 OH 13.5'', Csg 9.625'' 32.3 lb/ft H-40, Mud 9.2 ppg.
Event	10	Fill Lines	12/1/2016	15:28:00	USER	8.4	2	44	2	Fresh water
Event	11	Test Lines	12/1/2016	15:30:00	COM6	8.4	.5	3667	.5	Held pressure 2 minutes no leaks
Event	12	Fresh water spacer	12/1/2016	15:35:58	COM6	8.4	4	170	20	Fresh water
Event	13	Pump Lead Cement	12/1/2016	15:47:42	COM6	12.3	8	500	57.2	135 Sks 12.3 ppg 2.38 yield 13.77 gal/sk

Event	14	Pump Tail Cement	12/1/2016	15:56:34	COM6	12.8	8	550	65.8	175 Sks 12.8 ppg 2.11 yield 11.78 gal/sk
Event	15	Shutdown	12/1/2016	16:08:00	USER					Wash up on top of plug
Event	16	Drop Top Plug	12/1/2016	16:09:00	USER					Verify Plug Launched
Event	17	Pump Displacement	12/1/2016	16:09:57	COM6	8.4	11	840	87.1	Fresh water
Event	18	Slow Rate	12/1/2016	16:21:23	USER	8.4	2	350	77	Slow Rate 10 bbls to Calculated Displacement
Event	19	Bump Plug	12/1/2016	16:25:55	USER	8.4	2	320	87.1	Plug Bumped at 320 psi, Brought up to 1000 psi
Event	20	Check Floats	12/1/2016	16:27:34	USER					Floats held – ½ bbl back to the truck
Event	21	End Job	12/1/2016	16:27:52	COM6					Good returns throughout job, pipe was not reciprocated during cement, 15 bbls of cement to surface
Event	22	Other	12/1/2016	16:34:34	USER					Rig Circulated 1 hr prior to cement job at 12 bpm 193 psi
Event	23	Pre-Rig Down Safety Meeting	12/1/2016	16:35:00	USER					40 lbs sugar, No add hours
Event	24	Rig-Down Equipment	12/1/2016	16:40:00	USER					
Event	25	Pre-Convoy Safety Meeting	12/1/2016	17:15:00	USER					
Event	26	Crew Leave Location	12/1/2016	17:30:00	USER					Thank you for using Halliburton – Ryan Muhlestein and crew.

TEP ROCKY MOUNTAIN LLC - RU 14-7 - SURFACE CASING



— DH Density (ppg)
 — Comb Pump Rate (bbl/min)
 — PS Pump Press (psi)
 — Pump Stg Tot (bbl)

- | | | | | |
|--|--------------------------|---------------------|--------------------------------|------------------------------|
| ① Call Out | ⑦ Rig-Up Equipment | ⑬ Pump Lead Cement | ⑰ Bump Plug | 25 Pre-Convoy Safety Meeting |
| ② Pre-Convoy Safety Meeting | ⑧ Pre-Job Safety Meeting | ⑭ Pump Tail Cement | 20 Check Floats | 26 Crew Leave Location |
| ③ Crew Leave Yard | ⑨ Start Job | ⑮ Shutdown | 21 End Job | |
| ④ Arrive at Location from Service Center | ⑩ Fill Lines | ⑯ Drop Top Plug | 22 Other | |
| ⑤ Assessment Of Location Safety Meeting | ⑪ Test Lines | ⑰ Pump Displacement | 23 Pre-Rig Down Safety Meeting | |
| ⑥ Pre-Rig Up Safety Meeting | ⑫ Fresh water spacer | ⑱ Slow Rate | 24 Rig-Down Equipment | |

▼ **HALLIBURTON** | iCem® Service

Created: 2016-12-01 12:08:09, Version: 4.2.393

[Edit](#)

Customer : TEP ROCKY MOUNTAIN LLC
 Representative : Brandon Haire

Job Date : 12/1/2016 12:26:10 PM
 Sales Order # : 903694928

Well : RU 14-7
 Elite 4 : Muhlestein/Blossom