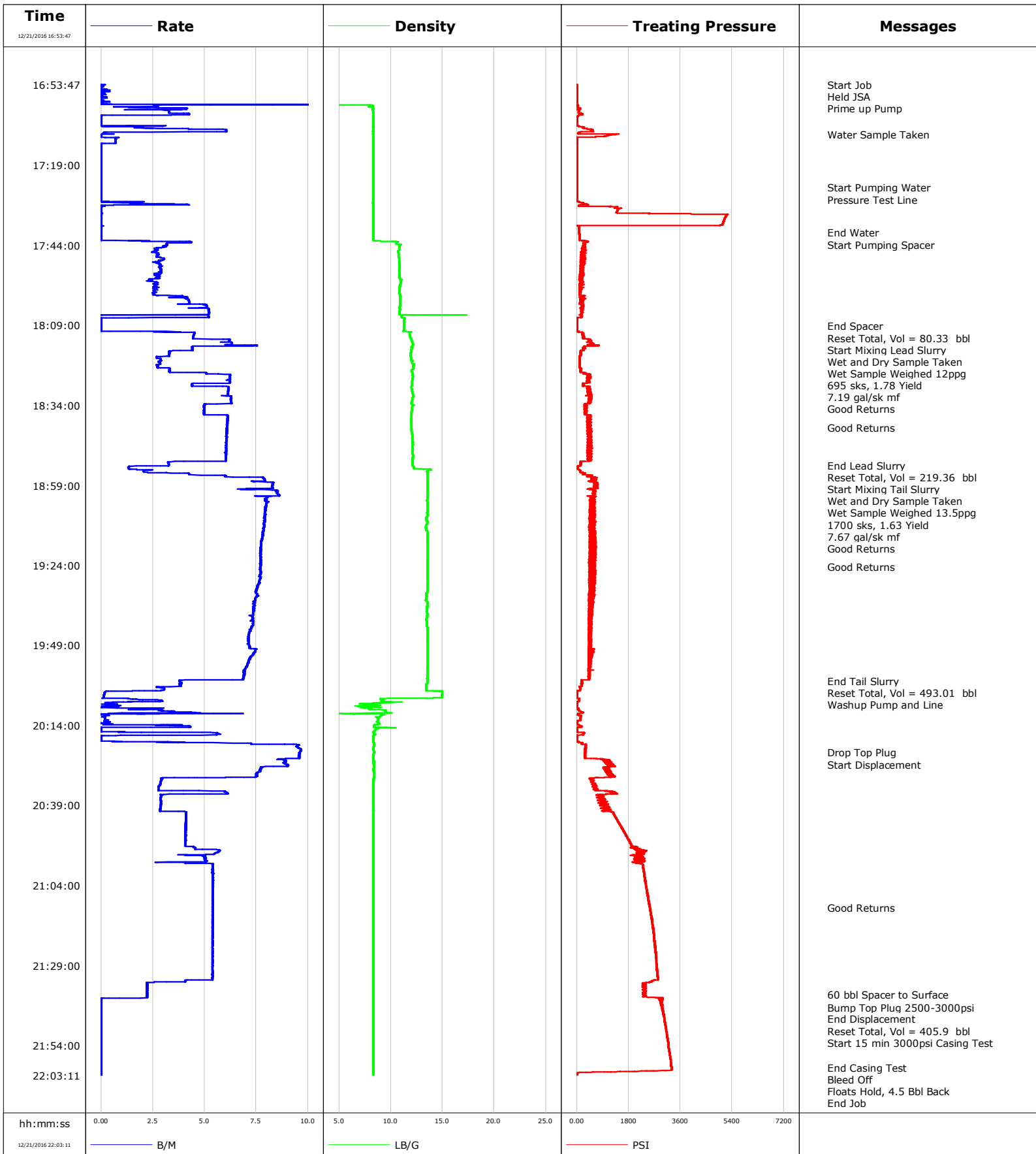


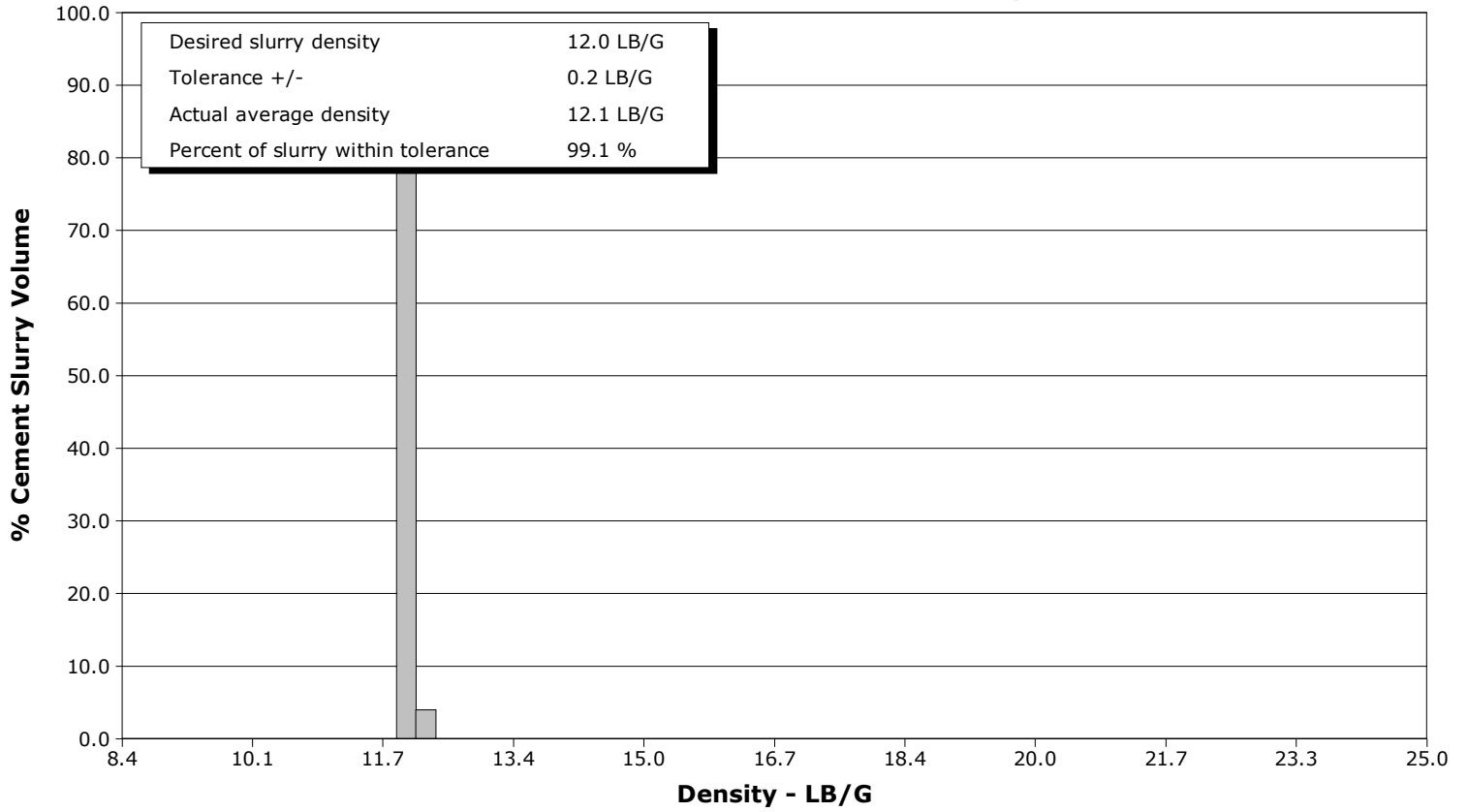
Well	JZM 29N-W3HZ	Client	Anadarko
Field	Wattenberg	SIR No.	DMBW-00571
Engineer	Ryan Drilling/Ken Sovereign	Job Type	5.5" Production
Country	United States	Job Date	12-21-2016



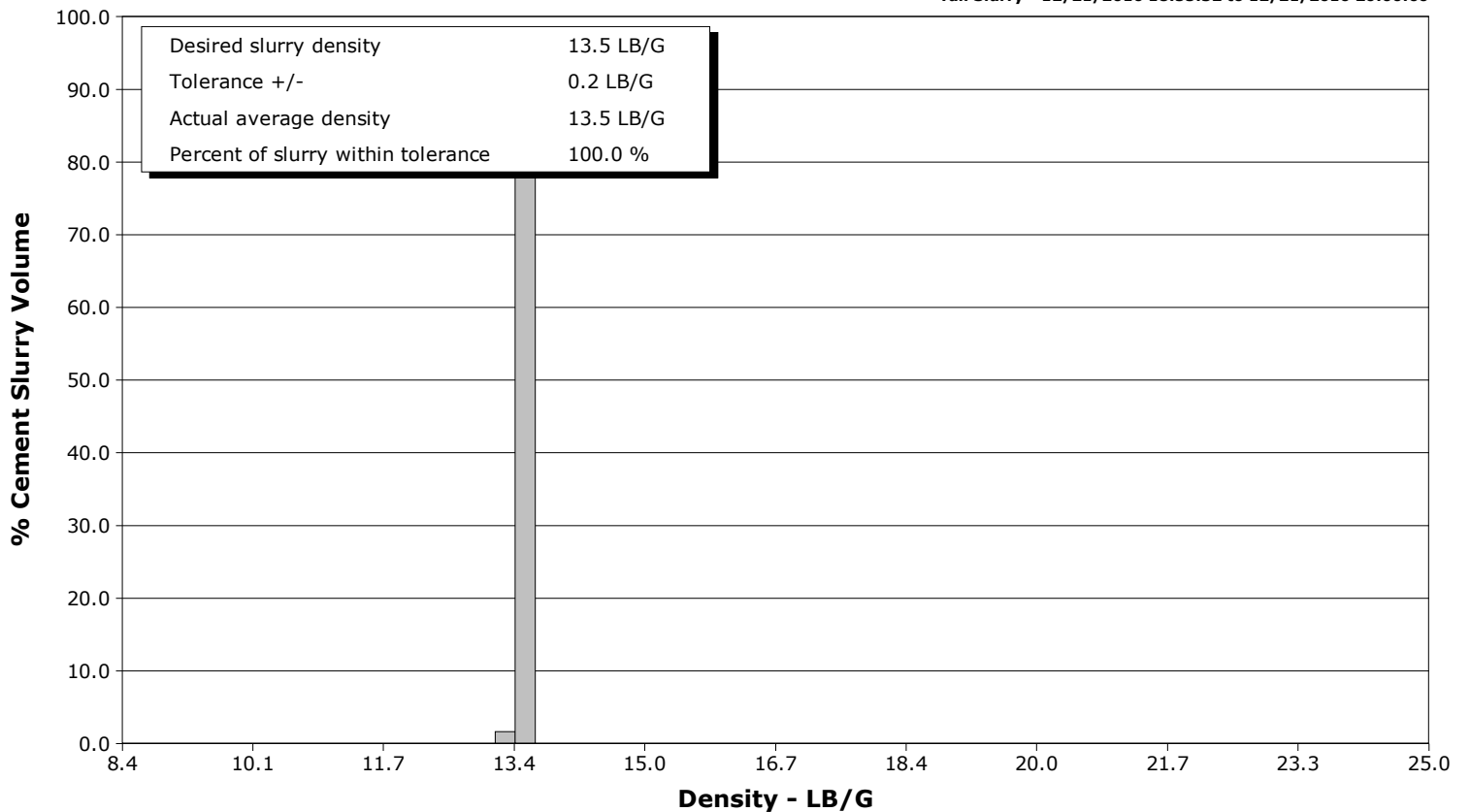
Well JZM 29N-W3HZ
Field Wattenberg
Engineer Ryan Drilling/Ken Sovereign
Country United States

Client Anadarko
SIR No. DMBW-00571
Job Type 5.5" Production
Job Date 12-21-2016

Lead Slurry - 12/21/2016 18:13:42 to 12/21/2016 18:52:46



Tail Slurry - 12/21/2016 18:55:32 to 12/21/2016 20:00:00



				Customer			Job Number			
				Anadarko			DMBW-00571			
Well		Location (legal)			Schlumberger Location			Job Start		
JZM 29N-W3HZ		CWY			CWY			Dec/21/2016		
Field		Formation Name/Type		Deviation	Bit Size	Well MD		Well TVD		
Wattenberg		Shale		90 deg	8.5 in	17554.9 ft		7498.0 ft		
County		State/Province		BHP	BHST	BHCT	Pore Press. Gradient			
Weld		Colorado		psi	230 degF	229 degF	lb/gal			
Well Master		API/UWI								
0631662932										
Rig Name	Drilled For		Service Via	Casing/Liner						
Xtreme 22	Oil & Gas		Land							
	Depth, ft	Size, in	Weight, lb/ft	Grade	Thread					
Offshore Zone	Well Class	Well Type	2250.0	9.6	36.0	j55	lrc			
	New	Development	17554.9	5.5	17.0	hcp110	lrc			
Drilling Fluid Type		Max. Density	Plastic Viscosity	Tubing/Drill Pipe						
OBM		9.50 lb/gal	cP							
T/D	Depth, ft	Size, in	Weight, lb/ft	Grade	Thread					
Service Line		Job Type		Perforations/Open Hole						
Cementing		5.5" Production								
Max. Allowed Tub. Press		Max. Allowed Ann. Press	WH Connection	Top, ft	Bottom, ft	shot/ft	No. of Shots	Total Interval		
psi		psi	Double Cement head	ft	ft			ft		
Service Instructions				ft	ft			Diameter		
9 5/8" 36# Previous Casing: 2,250'				ft	ft			in		
8 1/2" to TD // OH Excess: 4%										
Top of Lead Cement: 1,000'										
Top of Tail Cement: 6,000'										
TD: 17,535' (7,498')										
Temp Gradient 2.3 degF/100ft from Gradient Map --Bring 5 1/2" Head (Double Plug),										
Bowls, SLB Top and Bottom Plugs (For Backup Only)										
--Bring Defoamer, 200 lbs Sugar, and CemPRIME SCRUB Surfactant and Fiber										
Casing/Tubing Secured		1 Hole Vol. Circulated prior to Cement	Casing Tools	Squeeze Job						
<input checked="" type="checkbox"/>		<input checked="" type="checkbox"/>								
Lift Pressure		Shoe Type	Shoe Depth	Stage Tool Type	Tool Depth					
2500 psi		Float	17554.9 ft		ft					
Pipe Rotated		Pipe Reciprocated	Stage Tool Depth	Tail Pipe Size	Tail Pipe Depth					
<input type="checkbox"/>		<input type="checkbox"/>	ft	in	ft					
No. Centralizers		Top Plugs	Bottom Plugs	Cement Head Type	Collar Type	Collar Depth	Sqz. Total Vol.			
		1	1	Double	Float	17461.0 ft	bbl			
Job Scheduled For		Arrived on Location	Leave Location	Date	Time 24-hr clock	Treating Pressure PSI	Flow Rate B/M	Density LB/G	Volume BBL	Message
Dec/21/2016 12:00		Dec/21/2016 12:00	Dec/21/2016 23:00							
12/21/2016	16:53:47	1	0.0	0.01	0.0	0.0	0.0	0.0	0.0	Started Acquisition
12/21/2016	16:53:48	1	0.0	0.01	0.0	0.0	0.0	0.0	0.0	Start Job
12/21/2016	16:53:49	1	0.0	0.01	0.0	0.0	0.0	0.0	0.0	Held JSA
12/21/2016	16:54:00	0	0.0	0.01	0.0	0.0	0.0	0.0	0.0	Prime up Pump
12/21/2016	16:54:47	-0	0.0	0.02	0.0	0.0	0.0	0.0	0.0	
12/21/2016	16:55:47	1	0.0	0.01	0.0	0.0	0.0	0.0	0.0	
12/21/2016	16:56:47	1	0.0	0.01	0.0	0.0	0.0	0.0	0.0	
12/21/2016	16:57:47	1	0.0	0.01	0.0	0.0	0.0	0.0	0.0	
12/21/2016	16:58:47	1	0.0	0.01	0.0	0.0	0.0	0.0	0.0	
12/21/2016	16:59:47	0	0.0	0.02	0.0	0.1	0.0	0.0	0.0	
12/21/2016	17:00:47	10	0.6	8.30	3.5	0.0	0.0	0.0	0.0	
12/21/2016	17:01:47	80	3.0	8.28	6.7	0.0	0.0	0.0	0.0	
12/21/2016	17:02:47	111	3.7	8.31	9.9	0.0	0.0	0.0	0.0	
12/21/2016	17:03:47	25	0.0	8.31	12.5	0.0	0.0	0.0	0.0	
12/21/2016	17:04:47	4	0.0	8.31	12.5	0.0	0.0	0.0	0.0	
12/21/2016	17:05:47	2	0.0	8.31	12.5	0.0	0.0	0.0	0.0	
12/21/2016	17:06:47	78	3.0	8.31	0.2	0.0	0.0	0.0	0.0	
12/21/2016	17:07:47	515	5.1	8.31	2.4	0.0	0.0	0.0	0.0	
12/21/2016	17:08:47	68	0.1	8.34	7.5	0.0	0.0	0.0	0.0	
12/21/2016	17:09:20	1449	0.2	8.30	7.6	0.0	0.0	0.0	0.0	Water Sample Taken
12/21/2016	17:09:47	1074	0.0	8.31	7.6	0.0	0.0	0.0	0.0	

Well		Field		Job Start		Customer		Job Number	
JZM 29N-W3HZ		Wattenberg		Dec/21/2016		Anadarko		DMBW-00571	
Date	Time 24-hr clock	Treating Pressure PSI	Flow Rate B/M	Density LB/G	Volume BBL	Message			
12/21/2016	17:11:47	6	0.7	8.31	8.6				
12/21/2016	17:12:47	3	0.0	8.31	8.9				
12/21/2016	17:13:47	3	0.0	8.31	8.9				
12/21/2016	17:14:47	2	0.0	8.31	8.9				
12/21/2016	17:15:47	3	0.0	8.31	8.9				
12/21/2016	17:16:47	3	0.0	8.31	8.9				
12/21/2016	17:17:47	3	0.0	8.31	8.9				
12/21/2016	17:18:47	2	0.0	8.31	8.9				
12/21/2016	17:19:47	2	0.0	8.31	8.9				
12/21/2016	17:20:47	3	0.0	8.31	8.9				
12/21/2016	17:21:47	2	0.0	8.31	8.9				
12/21/2016	17:22:47	2	0.0	8.31	8.9				
12/21/2016	17:23:47	2	0.0	8.31	8.9				
12/21/2016	17:24:47	3	0.0	8.31	8.9				
12/21/2016	17:25:47	3	0.0	8.31	8.9				
12/21/2016	17:25:57	3	0.0	8.31	8.9	Start Pumping Water			
12/21/2016	17:26:47	3	0.0	8.31	9.0				
12/21/2016	17:27:47	3	0.0	8.31	9.0				
12/21/2016	17:28:47	3	0.0	8.31	9.0				
12/21/2016	17:29:47	3	0.0	8.31	9.0				
12/21/2016	17:30:47	227	2.0	8.30	9.3				
12/21/2016	17:31:47	56	0.0	8.31	0.0				
12/21/2016	17:32:47	1434	0.0	8.31	0.0				
12/21/2016	17:33:47	1379	0.0	8.31	0.0				
12/21/2016	17:34:47	5195	0.0	8.31	0.0				
12/21/2016	17:35:47	5138	0.0	8.31	0.0				
12/21/2016	17:36:47	5094	0.0	8.31	0.0				
12/21/2016	17:37:47	4985	0.0	8.31	0.0				
12/21/2016	17:38:47	80	0.0	8.31	0.1				
12/21/2016	17:39:47	84	0.0	8.31	0.1				
12/21/2016	17:39:58	85	0.0	8.31	0.1	End Water			
12/21/2016	17:40:03	86	0.0	8.31	0.1	Start Pumping Spacer			
12/21/2016	17:40:47	88	0.0	8.31	0.1				
12/21/2016	17:41:47	90	0.0	8.31	0.1				
12/21/2016	17:42:47	348	4.1	10.04	0.5				
12/21/2016	17:43:47	291	3.2	11.01	4.2				
12/21/2016	17:44:47	187	2.9	10.85	7.3				
12/21/2016	17:45:47	286	2.6	10.73	10.0				
12/21/2016	17:46:47	268	2.7	10.77	12.6				
12/21/2016	17:47:47	229	2.7	10.78	15.4				
12/21/2016	17:48:47	171	2.9	10.81	18.3				
12/21/2016	17:49:47	168	2.8	10.86	21.1				
12/21/2016	17:50:47	164	2.8	10.86	23.9				
12/21/2016	17:51:47	168	2.9	10.83	26.8				
12/21/2016	17:52:47	114	2.8	10.86	29.7				
12/21/2016	17:53:47	170	2.8	10.87	32.4				
12/21/2016	17:54:47	119	2.5	11.07	35.1				
12/21/2016	17:55:47	220	2.7	10.95	37.6				
12/21/2016	17:56:47	140	2.6	10.89	40.2				
12/21/2016	17:57:47	98	2.7	10.84	42.8				
12/21/2016	17:58:47	98	2.6	10.87	45.4				
12/21/2016	17:59:47	309	3.9	10.93	48.1				
12/21/2016	18:00:47	235	4.1	10.92	52.1				
12/21/2016	18:01:47	223	4.2	10.91	56.3				

Well		Field		Job Start		Customer		Job Number	
JZM 29N-W3HZ		Wattenberg		Dec/21/2016		Anadarko		DMBW-00571	
Date	Time 24-hr clock	Treating Pressure PSI	Flow Rate B/M	Density LB/G	Volume BBL	Message			
12/21/2016	18:03:47	176	5.2	10.88	65.8				
12/21/2016	18:04:47	161	5.2	10.88	71.0				
12/21/2016	18:05:47	138	0.0	16.72	76.0				
12/21/2016	18:06:47	19	0.0	11.33	80.4				
12/21/2016	18:07:47	6	0.0	11.31	80.4				
12/21/2016	18:08:47	4	0.0	11.30	80.4				
12/21/2016	18:09:14	5	0.0	11.30	80.4	End Spacer			
12/21/2016	18:09:15	4	0.0	11.30	80.4	Reset Total, Vol = 80.33 bbl			
12/21/2016	18:09:47	3	0.0	11.30	80.4				
12/21/2016	18:10:47	3	0.0	11.29	80.4				
12/21/2016	18:11:47	240	4.5	11.80	83.8				
12/21/2016	18:12:47	217	4.5	11.90	88.3				
12/21/2016	18:13:42	427	6.2	12.02	93.0	Start Mixing Lead Slurry			
12/21/2016	18:13:43	427	6.2	12.02	93.1	Wet and Dry Sample Taken			
12/21/2016	18:13:44	427	6.2	12.03	93.2	Wet Sample Weighed 12ppg			
12/21/2016	18:13:45	414	6.2	12.03	93.4	Good Returns			
12/21/2016	18:13:47	453	6.2	12.03	93.6				
12/21/2016	18:14:47	577	6.3	12.13	99.8				
12/21/2016	18:15:47	244	4.4	11.97	106.0				
12/21/2016	18:16:47	216	4.4	11.96	110.4				
12/21/2016	18:17:47	152	3.3	11.94	114.0				
12/21/2016	18:18:47	91	2.7	11.91	117.2				
12/21/2016	18:19:47	99	2.9	11.95	119.9				
12/21/2016	18:20:47	101	2.8	12.05	122.8				
12/21/2016	18:21:47	102	2.7	12.23	125.6				
12/21/2016	18:22:47	133	3.3	12.16	128.5				
12/21/2016	18:23:47	256	5.1	12.08	132.0				
12/21/2016	18:24:47	463	6.2	12.13	137.6				
12/21/2016	18:25:47	354	6.2	12.10	143.8				
12/21/2016	18:26:47	417	6.2	12.07	150.1				
12/21/2016	18:27:47	230	4.4	12.04	155.1				
12/21/2016	18:28:47	387	6.2	12.03	160.8				
12/21/2016	18:29:47	426	6.1	12.08	166.9				
12/21/2016	18:30:47	427	6.1	12.14	173.0				
12/21/2016	18:31:47	477	6.3	12.12	179.3				
12/21/2016	18:32:47	432	6.3	12.07	185.5				
12/21/2016	18:33:47	289	5.0	12.10	191.5				
12/21/2016	18:34:47	282	5.0	12.06	196.5				
12/21/2016	18:35:47	325	5.0	12.04	201.5				
12/21/2016	18:36:47	340	5.0	12.00	206.5				
12/21/2016	18:37:47	392	6.1	11.99	212.3				
12/21/2016	18:38:47	448	6.1	11.98	218.5				
12/21/2016	18:39:47	414	6.1	11.97	224.6				
12/21/2016	18:40:47	427	6.1	12.02	230.6				
12/21/2016	18:40:54	428	6.1	12.02	231.3	Good Returns			
12/21/2016	18:41:47	478	6.1	12.02	236.7				
12/21/2016	18:42:47	434	6.1	12.06	242.8				
12/21/2016	18:43:47	515	6.1	12.10	248.8				
12/21/2016	18:44:47	435	6.1	12.12	254.9				
12/21/2016	18:45:47	436	6.0	12.12	260.9				
12/21/2016	18:46:47	426	6.0	12.12	267.0				
12/21/2016	18:47:47	415	6.1	12.11	273.0				
12/21/2016	18:48:47	485	6.0	12.09	279.1				
12/21/2016	18:49:47	371	6.0	12.13	285.1				

Well			Field		Job Start	Customer		Job Number
JZM 29N-W3HZ			Wattenberg		Dec/21/2016	Anadarko		DMBW-00571
Date	Time 24-hr clock	Treating Pressure PSI	Flow Rate B/M	Density LB/G	Volume BBL	Message		
12/21/2016	18:51:47	145	3.2	12.12	296.5			
12/21/2016	18:52:46	137	3.3	12.12	299.7	End Lead Slurry		
12/21/2016	18:52:47	138	3.3	12.12	299.8	Reset Total, Vol = 219.36 bbl		
12/21/2016	18:53:47	48	1.3	12.23	301.4			
12/21/2016	18:54:47	121	2.1	13.50	303.4			
12/21/2016	18:55:32	242	4.3	13.55	305.9	Start Mixing Tail Slurry		
12/21/2016	18:55:33	267	4.3	13.55	305.9	Wet and Dry Sample Taken		
12/21/2016	18:55:34	304	4.3	13.55	306.0	1700 sks, 1.63 Yield		
12/21/2016	18:55:47	395	5.5	13.55	306.9			
12/21/2016	18:56:47	538	7.8	13.56	313.6			
12/21/2016	18:57:18	659	7.9	13.55	317.7	Good Returns		
12/21/2016	18:57:47	490	7.4	13.55	321.4			
12/21/2016	18:58:47	660	8.3	13.56	329.6			
12/21/2016	18:59:47	732	8.3	13.56	337.9			
12/21/2016	19:00:47	572	8.5	13.60	345.9			
12/21/2016	19:01:47	584	8.5	13.59	354.4			
12/21/2016	19:02:47	537	8.0	13.57	362.7			
12/21/2016	19:03:47	634	8.0	13.48	370.6			
12/21/2016	19:04:47	498	8.0	13.55	378.6			
12/21/2016	19:05:47	522	8.0	13.55	386.4			
12/21/2016	19:06:47	566	7.9	13.53	394.5			
12/21/2016	19:07:47	461	7.9	13.52	402.4			
12/21/2016	19:08:47	604	7.9	13.50	410.3			
12/21/2016	19:09:47	530	7.9	13.45	418.2			
12/21/2016	19:10:47	490	7.8	13.55	426.1			
12/21/2016	19:11:47	609	7.9	13.41	434.0			
12/21/2016	19:12:47	477	7.8	13.43	441.9			
12/21/2016	19:13:47	567	7.8	13.52	449.7			
12/21/2016	19:14:47	571	7.8	13.52	457.5			
12/21/2016	19:15:47	441	7.8	13.57	465.3			
12/21/2016	19:16:47	617	7.7	13.56	473.0			
12/21/2016	19:17:47	492	7.7	13.58	480.8			
12/21/2016	19:18:47	514	7.7	13.57	488.5			
12/21/2016	19:19:47	591	7.7	13.58	496.2			
12/21/2016	19:20:47	460	7.7	13.58	503.9			
12/21/2016	19:21:47	600	7.7	13.57	511.6			
12/21/2016	19:22:47	488	7.7	13.53	519.3			
12/21/2016	19:23:47	496	7.7	13.53	527.0			
12/21/2016	19:24:20	499	7.7	13.54	531.2	Good Returns		
12/21/2016	19:24:47	593	7.7	13.55	534.7			
12/21/2016	19:25:47	439	7.7	13.56	542.4			
12/21/2016	19:26:47	562	7.7	13.55	550.1			
12/21/2016	19:27:47	590	7.7	13.56	557.7			
12/21/2016	19:28:47	427	7.6	13.57	565.4			
12/21/2016	19:29:47	636	7.6	13.57	573.1			
12/21/2016	19:30:47	451	7.6	13.56	580.6			
12/21/2016	19:31:47	476	7.5	13.57	588.1			
12/21/2016	19:32:47	589	7.5	13.46	595.6			
12/21/2016	19:33:47	433	7.5	13.48	603.2			
12/21/2016	19:34:47	559	7.5	13.38	610.6			
12/21/2016	19:35:47	454	7.4	13.57	618.0			
12/21/2016	19:36:47	441	7.4	13.52	625.4			
12/21/2016	19:37:47	546	7.4	13.50	632.8			
12/21/2016	19:38:47	451	7.4	13.51	640.2			

Well			Field		Job Start	Customer	Job Number
JZM 29N-W3HZ			Wattenberg		Dec/21/2016	Anadarko	DMBW-00571
Date	Time 24-hr clock	Treating Pressure PSI	Flow Rate B/M	Density LB/G	Volume BBL	Message	
12/21/2016	19:40:47	517	7.3	13.46	654.8		
12/21/2016	19:41:47	430	7.4	13.49	662.1		
12/21/2016	19:42:47	508	7.3	13.51	669.5		
12/21/2016	19:43:47	405	7.2	13.54	676.8		
12/21/2016	19:44:47	459	7.2	13.55	684.0		
12/21/2016	19:45:47	500	7.1	13.55	691.1		
12/21/2016	19:46:47	451	7.1	13.55	698.2		
12/21/2016	19:47:47	486	7.1	13.56	705.3		
12/21/2016	19:48:47	436	7.1	13.58	712.4		
12/21/2016	19:49:47	497	7.2	13.58	719.6		
12/21/2016	19:50:47	518	7.4	13.60	727.0		
12/21/2016	19:51:47	410	7.3	13.60	734.4		
12/21/2016	19:52:47	525	7.2	13.59	741.7		
12/21/2016	19:53:47	453	7.1	13.58	748.8		
12/21/2016	19:54:47	433	7.1	13.59	756.0		
12/21/2016	19:55:47	456	7.0	13.58	763.0		
12/21/2016	19:56:47	413	6.9	13.57	770.0		
12/21/2016	19:57:47	460	6.9	13.57	776.9		
12/21/2016	19:58:47	444	6.9	13.56	783.8		
12/21/2016	19:59:47	166	5.4	13.54	790.6		
12/21/2016	20:00:00	161	3.8	13.54	791.5	End Tail Slurry	
12/21/2016	20:00:47	173	3.9	13.54	794.5		
12/21/2016	20:01:38	174	3.8	13.46	797.8	Reset Total, Vol = 493.01 bbl	
12/21/2016	20:01:47	159	3.8	13.46	798.3		
12/21/2016	20:02:47	114	3.1	13.46	801.3		
12/21/2016	20:03:12	32	1.8	14.08	802.5	Washup Pump and Line	
12/21/2016	20:03:47	5	0.2	14.97	802.8		
12/21/2016	20:04:47	8	0.1	14.93	802.9		
12/21/2016	20:05:47	76	1.6	9.15	803.4		
12/21/2016	20:06:47	7	0.6	10.04	805.8		
12/21/2016	20:07:47	7	0.5	8.03	806.2		
12/21/2016	20:08:47	43	2.0	8.16	807.2		
12/21/2016	20:09:47	204	3.5	9.50	809.9		
12/21/2016	20:10:47	59	0.2	9.14	812.4		
12/21/2016	20:11:47	129	0.2	8.81	812.6		
12/21/2016	20:12:47	19	0.2	8.74	812.8		
12/21/2016	20:13:47	78	3.5	8.51	813.1		
12/21/2016	20:14:47	18	0.0	8.75	816.2		
12/21/2016	20:15:47	4	0.0	8.42	816.2		
12/21/2016	20:16:47	220	5.6	8.51	819.9		
12/21/2016	20:17:47	3	0.0	8.33	821.3		
12/21/2016	20:18:47	2	0.0	8.32	821.3		
12/21/2016	20:19:47	177	7.3	8.38	825.1		
12/21/2016	20:20:47	308	9.5	8.33	834.4		
12/21/2016	20:21:47	300	9.7	8.34	844.0		
12/21/2016	20:22:30	293	9.6	8.35	850.9	Drop Top Plug	
12/21/2016	20:22:31	303	9.6	8.35	851.1	Start Displacement	
12/21/2016	20:22:47	284	9.6	8.35	853.6		
12/21/2016	20:23:47	297	9.6	8.34	863.2		
12/21/2016	20:24:47	904	8.8	8.35	872.4		
12/21/2016	20:25:47	1137	8.9	8.35	881.3		
12/21/2016	20:26:47	1331	9.0	8.35	890.2		
12/21/2016	20:27:47	1094	7.7	8.35	898.0		
12/21/2016	20:28:47	1035	7.6	8.36	905.7		

Well			Field		Job Start	Customer	Job Number
JZM 29N-W3HZ			Wattenberg		Dec/21/2016	Anadarko	DMBW-00571
Date	Time 24-hr clock	Treating Pressure PSI	Flow Rate B/M	Density LB/G	Volume BBL	Message	
12/21/2016	20:30:47	512	2.9	8.35	918.4		
12/21/2016	20:31:47	532	2.9	8.35	921.3		
12/21/2016	20:32:47	577	2.8	8.35	924.1		
12/21/2016	20:33:47	736	2.8	8.35	926.9		
12/21/2016	20:35:47	734	2.9	8.34	936.0		
12/21/2016	20:36:47	868	2.9	8.34	938.9		
12/21/2016	20:37:47	1011	2.9	8.34	941.8		
12/21/2016	20:38:47	1106	2.9	8.34	944.7		
12/21/2016	20:39:47	1009	2.9	8.34	947.5		
12/21/2016	20:40:47	908	2.8	8.32	950.4		
12/21/2016	20:41:47	1302	4.1	8.33	954.4		
12/21/2016	20:42:47	1364	4.1	8.33	958.5		
12/21/2016	20:43:47	1428	4.1	8.33	962.6		
12/21/2016	20:44:47	1484	4.1	8.33	966.7		
12/21/2016	20:45:47	1545	4.1	8.33	970.8		
12/21/2016	20:46:47	1610	4.1	8.33	974.9		
12/21/2016	20:47:47	1682	4.1	8.33	979.0		
12/21/2016	20:48:47	1749	4.1	8.33	983.1		
12/21/2016	20:49:47	1809	4.1	8.33	987.2		
12/21/2016	20:50:47	1857	4.1	8.33	991.3		
12/21/2016	20:51:47	1966	4.5	8.33	995.4		
12/21/2016	20:52:47	2218	5.7	8.33	999.9		
12/21/2016	20:53:47	2123	5.5	8.33	1005.6		
12/21/2016	20:54:47	1988	4.9	8.33	1010.6		
12/21/2016	20:55:47	2163	5.1	8.33	1015.7		
12/21/2016	20:56:47	2020	4.1	8.33	1020.4		
12/21/2016	20:57:47	2297	5.4	8.33	1025.4		
12/21/2016	20:58:47	2318	5.4	8.33	1030.8		
12/21/2016	20:59:47	2330	5.4	8.32	1036.2		
12/21/2016	21:00:47	2349	5.4	8.33	1041.6		
12/21/2016	21:01:47	2365	5.4	8.33	1047.0		
12/21/2016	21:02:47	2389	5.4	8.33	1052.4		
12/21/2016	21:03:47	2398	5.4	8.33	1057.8		
12/21/2016	21:04:47	2423	5.4	8.33	1063.2		
12/21/2016	21:05:47	2446	5.4	8.33	1068.6		
12/21/2016	21:06:47	2457	5.4	8.33	1074.0		
12/21/2016	21:07:47	2478	5.4	8.33	1079.4		
12/21/2016	21:08:47	2501	5.4	8.33	1084.8		
12/21/2016	21:09:47	2519	5.4	8.33	1090.2		
12/21/2016	21:10:47	2541	5.4	8.33	1095.6		
12/21/2016	21:10:48	2542	5.4	8.33	1095.7	Good Returns	
12/21/2016	21:11:47	2548	5.4	8.33	1101.0		
12/21/2016	21:12:47	2576	5.4	8.33	1106.4		
12/21/2016	21:13:47	2594	5.4	8.33	1111.8		
12/21/2016	21:14:47	2610	5.4	8.33	1117.2		
12/21/2016	21:15:47	2628	5.4	8.33	1122.5		
12/21/2016	21:16:47	2647	5.4	8.33	1127.9		
12/21/2016	21:17:47	2655	5.4	8.33	1133.3		
12/21/2016	21:18:47	2670	5.4	8.33	1138.7		
12/21/2016	21:19:47	2687	5.4	8.33	1144.1		
12/21/2016	21:20:47	2693	5.4	8.33	1149.5		
12/21/2016	21:21:47	2714	5.4	8.33	1154.8		
12/21/2016	21:22:47	2719	5.4	8.33	1160.2		
12/21/2016	21:23:47	2729	5.4	8.33	1165.6		

Well		Field		Job Start		Customer		Job Number	
JZM 29N-W3HZ		Wattenberg		Dec/21/2016		Anadarko		DMBW-00571	
Date	Time 24-hr clock	Treating Pressure PSI	Flow Rate B/M	Density LB/G	Volume BBL	Message			
12/21/2016	21:25:47	2759	5.4	8.33	1176.4				
12/21/2016	21:26:47	2762	5.4	8.33	1181.8				
12/21/2016	21:27:47	2770	5.4	8.33	1187.1				
12/21/2016	21:28:47	2771	5.4	8.33	1192.5				
12/21/2016	21:29:47	2780	5.4	8.33	1197.9				
12/21/2016	21:30:47	2797	5.4	8.33	1203.3				
12/21/2016	21:31:47	2810	5.4	8.33	1208.6				
12/21/2016	21:32:47	2812	5.4	8.33	1214.0				
12/21/2016	21:33:47	2621	4.1	8.33	1219.0				
12/21/2016	21:34:47	2396	2.2	8.33	1221.9				
12/21/2016	21:35:47	2317	2.2	8.33	1224.2				
12/21/2016	21:36:47	2393	2.2	8.33	1226.4				
12/21/2016	21:37:47	2353	2.2	8.33	1228.6				
12/21/2016	21:38:00	2297	2.2	8.33	1229.1	60 bbl Spacer to Surface			
12/21/2016	21:38:47	2436	2.2	8.33	1230.8				
12/21/2016	21:39:47	2988	0.0	8.34	1231.6				
12/21/2016	21:40:47	2962	0.0	8.34	1231.6				
12/21/2016	21:41:47	2948	0.0	8.34	1231.6				
12/21/2016	21:41:58	2986	0.0	8.34	1231.6	Bump Top Plug 2500-3000psi			
12/21/2016	21:41:59	2986	0.0	8.34	1231.6	End Displacement			
12/21/2016	21:42:02	2955	0.0	8.34	1231.6	Reset Total, Vol = 405.9 bbl			
12/21/2016	21:42:47	2983	0.0	8.34	1231.6				
12/21/2016	21:43:47	3002	0.0	8.34	1231.6				
12/21/2016	21:44:47	3031	0.0	8.34	1231.6				
12/21/2016	21:44:51	3026	0.0	8.34	1231.6	Start 15 min 3000psi Casing Test			
12/21/2016	21:45:47	3048	0.0	8.34	1231.6				
12/21/2016	21:46:47	3065	0.0	8.34	1231.6				
12/21/2016	21:47:47	3084	0.0	8.34	1231.7				
12/21/2016	21:48:47	3103	0.0	8.34	1231.7				
12/21/2016	21:49:47	3121	0.0	8.34	1231.7				
12/21/2016	21:50:47	3137	0.0	8.34	1231.7				
12/21/2016	21:51:47	3154	0.0	8.34	1231.7				
12/21/2016	21:52:47	3170	0.0	8.34	1231.7				
12/21/2016	21:53:47	3187	0.0	8.35	1231.7				
12/21/2016	21:54:47	3202	0.0	8.34	1231.7				
12/21/2016	21:55:47	3218	0.0	8.34	1231.7				
12/21/2016	21:56:47	3234	0.0	8.34	1231.7				
12/21/2016	21:57:47	3249	0.0	8.34	1231.7				
12/21/2016	21:58:47	3264	0.0	8.34	1231.7				
12/21/2016	21:59:47	3279	0.0	8.34	1231.7				
12/21/2016	22:00:47	3294	0.0	8.34	1231.7				
12/21/2016	22:00:52	3295	0.0	8.34	1231.7	End Casing Test			
12/21/2016	22:01:09	3299	0.0	8.34	1231.7	Bleed Off			
12/21/2016	22:01:47	2963	0.0	8.34	1231.7				
12/21/2016	22:02:30	6	0.0	8.34	1231.7	Floats Hold, 4.5 Bbl Back			
12/21/2016	22:02:32	3	0.0	8.34	1231.7	End Job			

Well JZM 29N-W3HZ	Field Wattenberg	Job Start Dec/21/2016	Customer Anadarko	Job Number DMBW-00571
-----------------------------	----------------------------	---------------------------------	-----------------------------	---------------------------------

Post Job Summary

Average Pump Rates, bbl/min					Volume of Fluid Injected, bbl			
Slurry 4.8	N2	Mud	Maximum Rate 25.0	Total Slurry 714.0	Mud 0.0	Spacer 80.0	N2	
Treating Pressure Summary, psi					Breakdown Fluid			
Maximum 5240	Final 4	Average 982	Bump Plug to 3000	Breakdown	Type	Volume bbl	Density lb/gal	
Avg. N2 Percent %	Designed Slurry Volume 710.0 bbl	Displacement 405.9 bbl	Mix Water Temp 66 degF	Cement Circulated to Surface? <input type="checkbox"/>	Volume bbl		To ft	
				Washed Thru Perfs <input type="checkbox"/>				
Customer or Authorized Representative Luke Rains			Schlumberger Supervisor Ryan Drilling/Ken Sovereign		Circulation Lost <input type="checkbox"/>	Job Completed <input checked="" type="checkbox"/>		
					-	-		