

BASIS OF BEARINGS:
US STATE PLANE 1983
CO NORTH 0501 GRID

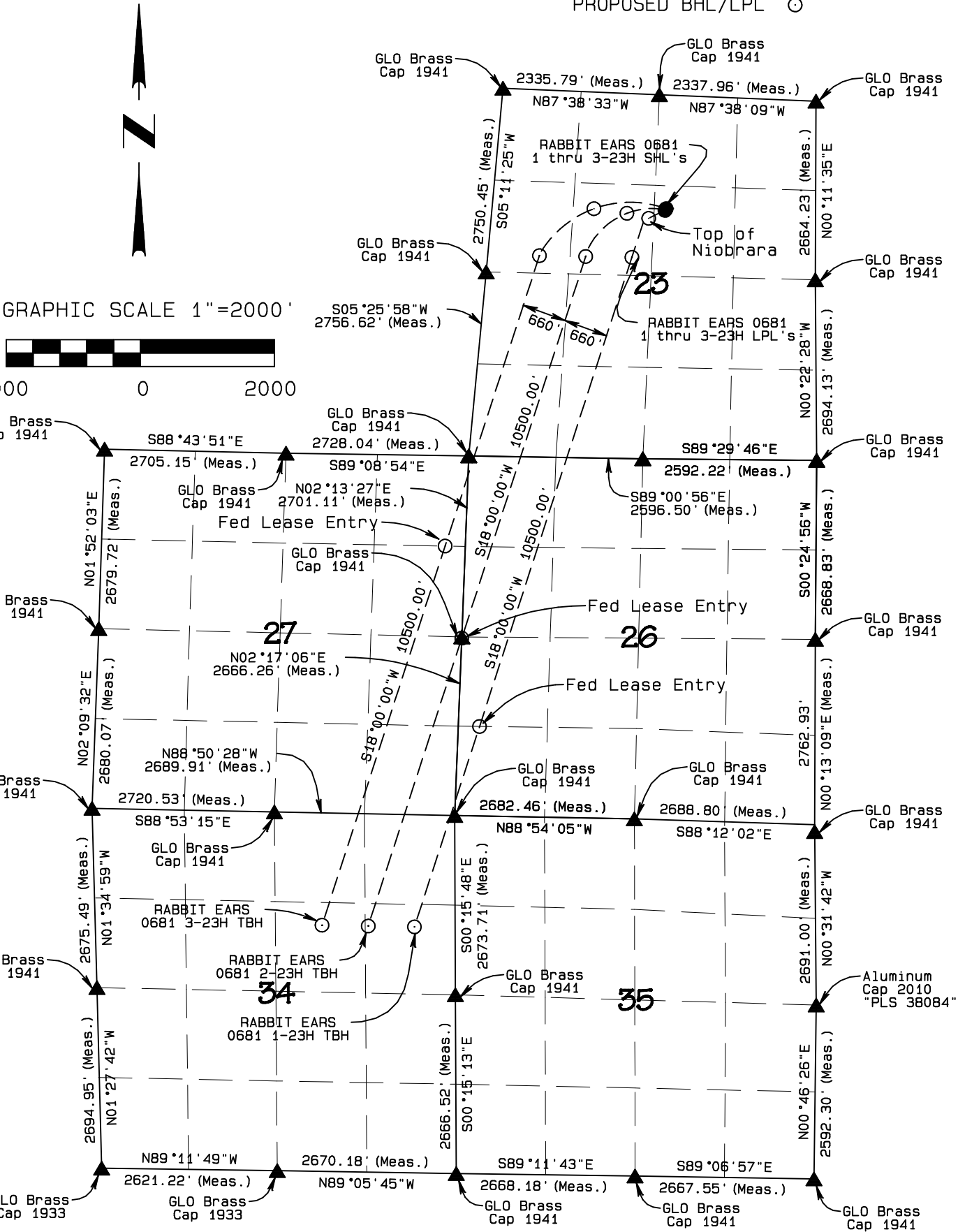
Multi-Well Plan,
RABBIT EARS 0681 S23 Pad
located as shown in Sections 23, 26,
27, 34 and 35, T6N, R81W, 6th P.M.,
Jackson County, Colorado.

BASIS OF ELEVATION

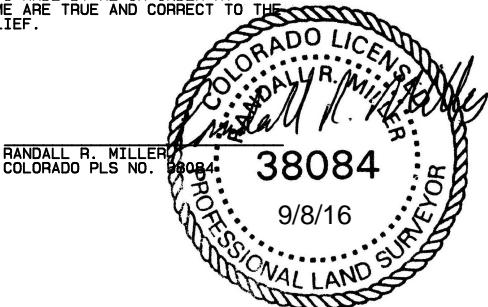
SPOT ELEVATION AT THE NW CORNER OF SECTION 23,
T6N, R81W, 6TH PM, TAKEN FROM THE SPICER PEAK
QUADRANGLE, USGS 7.5 MIN QUAD (TOPOGRAPHIC MAP)
WITH SAID ELEVATION MARKED AS BEING 8313 FEET.

LEGEND

FOUND CORNER
PROPOSED WELL
PROPOSED BHL/LPL



THIS IS TO CERTIFY THAT THE ABOVE PLAT WAS PREPARED FROM
FIELD NOTES OF ACTUAL SURVEYS MADE BY ME OR UNDER MY
SUPERVISION AND THAT THE SAME ARE TRUE AND CORRECT TO THE
BEST OF MY KNOWLEDGE AND BELIEF.



NORTH PARK ENGINEERING & CONSULTING, INC.

P.O. BOX 395
WALDEN, CO 80480
(970) 723-3725

| | |
|----------------------------------|---------------------------------|
| DATE OF FIELD WORK: MAR 20, 2016 | DRAWING COMPLETION: JUN 8, 2016 |
| SURVEYED BY: ADL | DRAWN BY: TKH |
| CHECKED BY: RRM | |
| REVISED: 9/7/2016 | |

T6N, R81W, 6th P.M.

GLO Brass
Cap 1941
Elev. = 8313'
N=1419853.87
E=2732188.34

GLO Brass Cap 1941
N=1419757.79, E=2734522.16

GLO Brass
Cap 1941
N=1419661.35
E=2736858.13

RABBIT EARS
0681 1-23H

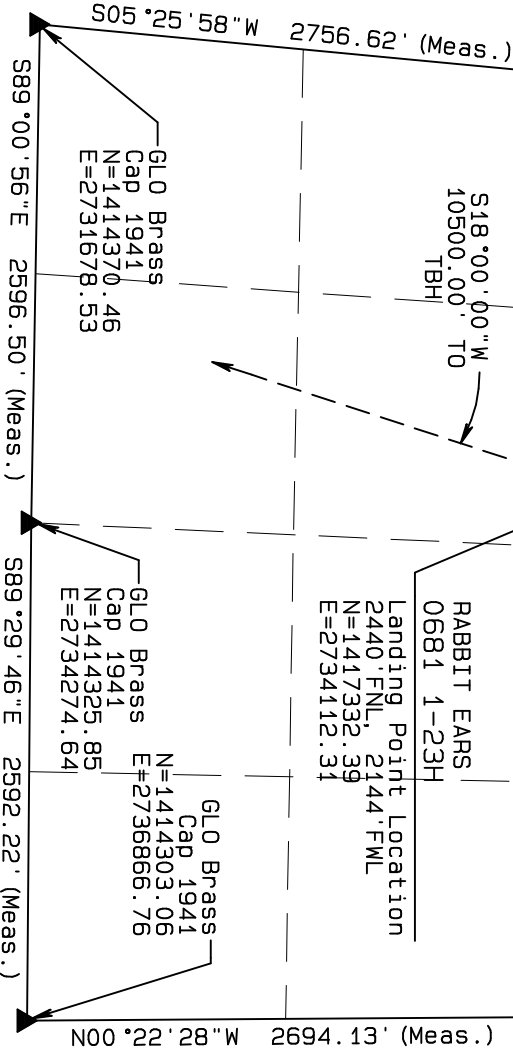
Surface Location Elev.
Ungraded Ground= 8308'
1720' FNL, 2246' FEL
N=1418032.39
E=2734606.19

RABBIT EARS
0681 1-23H

Landing Point Location
2440' FNL, 2144' FWL
N=1417332.39
E=2734112.31

GLO Brass
Cap 1941
N=1414370.46
E=2731678.53

GLO Brass
Cap 1941
N=1414325.85
E=2734274.64



Well location, RABBIT EARS 0681 1-23H located as shown in the SW1/4NE1/4 of Section 23, T6N, R81W, 6th P.M., Jackson County, Colorado.

Sandridge Exploration & Production, LLC

BASIS OF BEARINGS:

US STATE PLANE 1983
CO NORTH 0501 GRID

BASIS OF ELEVATION

SPOT ELEVATION AT THE NW CORNER OF SECTION 23, T6N, R81W, 6TH PM, TAKEN FROM THE SPICER PEAK QUADRANGLE, USGS 7.5 MIN QUAD (TOPOGRAPHIC MAP) WITH SAID ELEVATION MARKED AS BEING 8313 FEET.

LEGEND

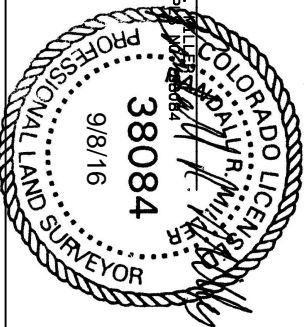
90° SYMBOL
FOUND CORNER
PROPOSED WELL
PROPOSED BHL/LPL

GRAPHIC SCALE 1"=1000'

GLO Brass Cap 1941
N=1416997.13
E=2736849.15

1000 0 1000

THIS IS TO CERTIFY THAT THE ABOVE PLAT WAS PREPARED FROM THE RECORDS OF ACTUAL SURVEYS MADE BY ME OR UNDER MY SUPERVISION AND THAT THE SAME ARE TRUE AND CORRECT TO THE BEST OF MY KNOWLEDGE AND BELIEF.



NORTH PARK ENGINEERING & CONSULTING, INC.

P.O. BOX 395
WALDEN, CO 80480
(970) 723-3725

DATE OF FIELD WORK: MAR 20, 2016 DRAWING COMPLETION: JUN 8, 2016
SURVEYED BY: ADL DRAWN BY: TKH CHECKED BY: RHM
REVISED: 9/7/2016

NAD 83 (TOP OF NIOBRARA)

LATITUDE=40.476649°N
LONGITUDE=106.454877°W
PDOP = 1.270

NAD 83 (TARGET BOTTOM HOLE)

LATITUDE=40.447539°N
LONGITUDE=106.467025°W

NAD 83 (LEASE ENTRY)

LATITUDE=40.455772°N
LONGITUDE=106.463653°W

T6N, R81W, 6th P.M.

GLO Brass
Cap 1941
N=1414370.46
E=2731678.53

589°00'56"E 2596.50' (Meas.)

589°29'46"E 2592.22' (Meas.)

GLO Brass
Cap 1941
N=1414325.85
E=2734274.64

GLO Brass
Cap 1941
N=1414303.06
E=2736866.76

GLO Brass
Cap 1941
N=1411671.38
E=2731573.69

GLO Brass
Cap 1941
N=1411634.30
E=2736847.40

RABBIT EARS 0681 1-23H
Lease Entry Point
1335' FSL 318' FWL
N=1407346.29
E=2730867.63

GLO Brass
Cap 1941
N=1408955.81
E=2734149.35

GLO Brass W.C.
Cap 1941
N=1408871.39
E=2736836.83

GLO Brass
Cap 1941
N=1409007.25
E=2731467.39

SandRidge Exploration & Production, LLC

Intermediate Section, RABBIT EARS 0681 1-23H
located in the W/2 of Section 26,
T6N, R81W, 6th P.M., Jackson County, Colorado.

BASIS OF BEARINGS:

US STATE PLANE 1983
CO NORTH 0501 GRID

BASIS OF ELEVATION

SPOT ELEVATION AT THE NW CORNER OF SECTION 23,
T6N, R81W, 6TH PM, TAKEN FROM THE SPICER PEAK
QUADRANGLE, USGS 7.5 MIN QUAD (TOPOGRAPHIC MAP)
WITH SAID ELEVATION MARKED AS BEING 8313 FEET.

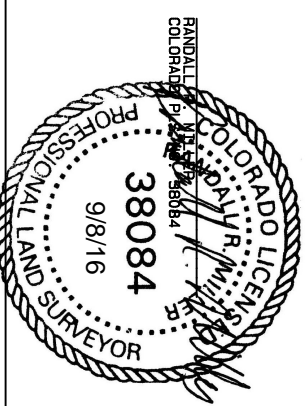
LEGEND

- 90° SYMBOL
- FOUND CORNER
- PROPOSED WELL
- PROPOSED BHL/LPL

GRAPHIC SCALE 1"=1000'

1000 0 1000

THIS IS TO CERTIFY THAT THE ABOVE PLAT WAS PREPARED FROM
FIELD NOTES OF ACTUAL SURVEY MADE BY ME OR UNDER MY
SUPERVISION AND THAT THE SAME ARE THE TRUE AND CORRECT TO THE
BEST OF MY KNOWLEDGE AND BELIEF.



NORTH PARK ENGINEERING &
CONSULTING, INC.

P.O. BOX 395
WALDEN, CO 80480
(970) 723-3725

DATE OF FIELD WORK: MAR 20, 2016 DRAWING COMPLETION: JUN 8, 2016
SURVEYED BY: ADL DRAWN BY: TKH CHECKED BY: RHM
REVISED: 9/7/2016

NAD 83 (TOP OF NIOBRARA)

LATITUDE=40.476649°N
LONGITUDE=106.454877°W
PDOP = 1.270

NAD 83 (TARGET BOTTOM HOLE)

LATITUDE=40.447539°N
LONGITUDE=106.467025°W

NAD 83 (LEASE ENTRY)

LATITUDE=40.455772°N
LONGITUDE=106.463653°W

SandRidge Exploration & Production, LLC

Intermediate Section, RABBIT EARS 0681 1-23H located as shown in the SE1/4SE1/4 of Section 27, T6N, R81W, 6th P.M., Jackson County, Colorado.

BASIS OF BEARINGS:

US STATE PLANE 1983
CO NORTH 0501 GRID

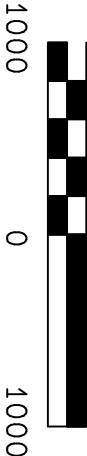
BASIS OF ELEVATION

SPOT ELEVATION AT THE NW CORNER OF SECTION 23, T6N, R81W, 6TH PM, TAKEN FROM THE SPICER PEAK QUADRANGLE, USGS 7.5 MIN QUAD (TOPOGRAPHIC MAP) WITH SAID ELEVATION MARKED AS BEING 8313 FEET.

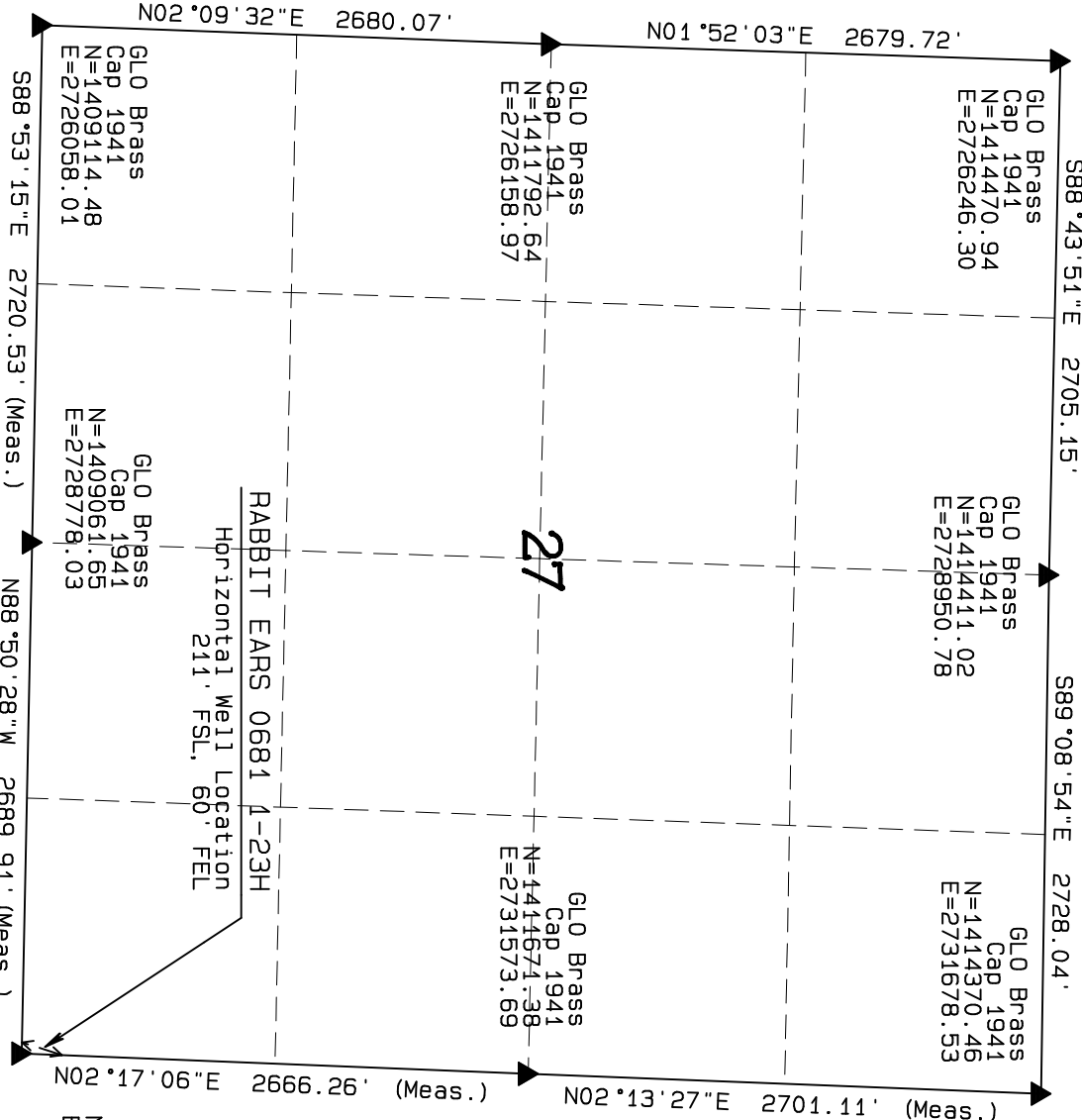
LEGEND

- 90° SYMBOL
- FOUND CORNER
- PROPOSED WELL
- PROPOSED BHL/LPL

GRAPHIC SCALE 1"=1000'



THIS IS TO CERTIFY THAT THE ABOVE PLAT WAS PREPARED FROM THE RECORDS OF ACTUAL SURVEYS MADE BY ME OR UNDER MY SUPERVISION AND THAT THE SAME ARE TRUE AND CORRECT TO THE BEST OF MY KNOWLEDGE AND BELIEF.



PROFESSIONAL LAND SURVEYOR
38084
9/8/16
RANDALL R. MILLER
COLORADO REG. #26684

NORTH PARK ENGINEERING & CONSULTING, INC.

P.O. BOX 395
WALDEN, CO 80480
(970) 723-3725

| | | | |
|-----------------------------|--|----------------------------------|--|
| NAD 83 (TOP OF NIOBRARA) | | NAD 83 (SURFACE LOCATION) | |
| LATITUDE=40.476649°N | | LATITUDE=40.476982°N | |
| LONGITUDE=106.454877°W | | LONGITUDE=106.454006°W | |
| | | PDOP = 1.270 | |
| NAD 83 (LEASE ENTRY) | | NAD 83 (LANDING POINT LOCATION) | |
| LATITUDE=40.455772°N | | LATITUDE=40.475046°N | |
| LONGITUDE=106.463653°W | | LONGITUDE=106.455754°W | |
| NAD 83 (TARGET BOTTOM HOLE) | | DATE OF FIELD WORK: MAR 20, 2016 | |
| LATITUDE=40.447539°N | | DRAWING COMPLETION: JUN 8, 2016 | |
| LONGITUDE=106.467025°W | | SURVEYED BY: ADL | |
| | | DRAWN BY: TKH | |
| | | CHECKED BY: RHM | |
| | | REVISED: 9/7/2016 | |

T6N, R81W, 6th P.M.

SandRidge Exploration & Production, LLC

Target Bottom Hole, RABBIT EARS 0681 1-23H located as shown in the SE1/4NE1/4 of Section 34, T6N, R81W, 6th P.M., Jackson County, Colorado.

BASIS OF BEARINGS:

US STATE PLANE 1983
CO NORTH 0501 GRID

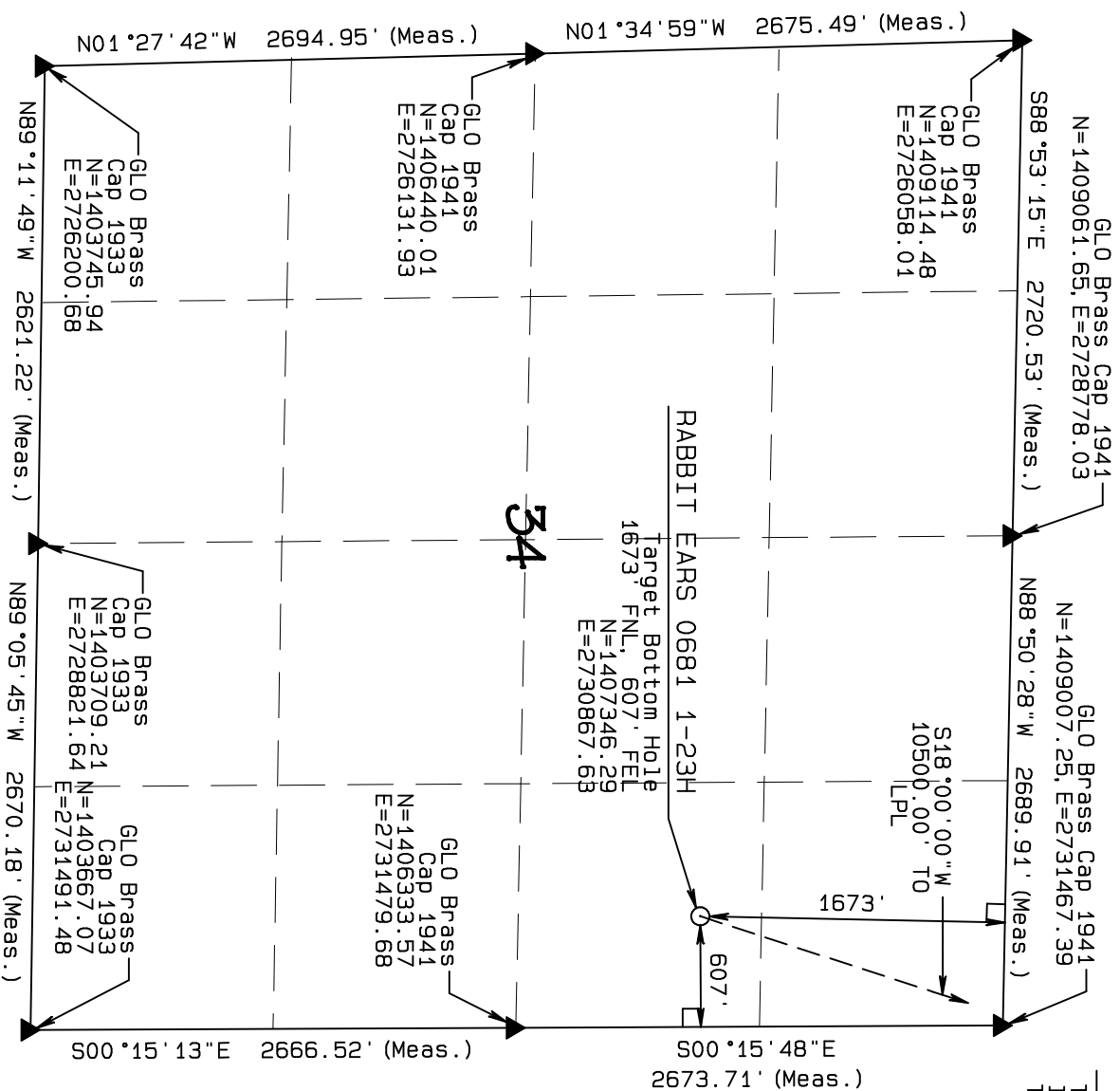
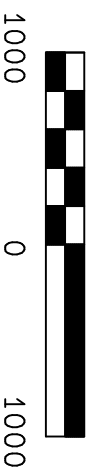
BASIS OF ELEVATION

SPOT ELEVATION AT THE NW CORNER OF SECTION 23, T6N, R81W, 6TH PM, TAKEN FROM THE SPICER PEAK QUADRANGLE, USGS 7.5 MIN QUAD (TOPOGRAPHIC MAP) WITH SAID ELEVATION MARKED AS BEING 8313 FEET.

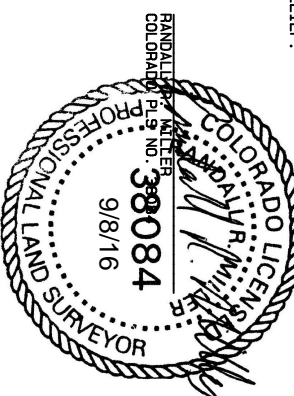
LEGEND

- 90° SYMBOL
- FOUND CORNER
- PROPOSED WELL
- PROPOSED BHL/LPL

GRAPHIC SCALE 1"=1000'



THIS IS TO CERTIFY THAT THE ABOVE PLAT WAS PREPARED FROM THE RECORDS OF ACTUAL SURVEYS MADE BY ME OR UNDER MY CLOSE SUPERVISION AND THAT THEY ARE THE TRUE AND CORRECT AND THE BEST OF MY KNOWLEDGE AND BELIEF.



NORTH PARK ENGINEERING & CONSULTING, INC.

P.O. BOX 395
WALDEN, CO 80480
(970) 723-3725

DATE OF FIELD WORK: MAR 20, 2016 DRAWING COMPLETION: JUN 8, 2016
SURVEYED BY: ADL DRAWN BY: TKH CHECKED BY: RHM
REVISED: 9/7/2016

NAD 83 (TOP OF NIOBRARA) NAD 83 (SURFACE LOCATION)

LATITUDE=40.476649°N LONGITUDE=106.454877°W PDOP = 1.270

NAD 83 (TARGET BOTTOM HOLE) NAD 83 (LANDING POINT LOCATION)

LATITUDE=40.447539°N LONGITUDE=106.467025°W

LATITUDE=40.455772°N LONGITUDE=106.463653°W

T6N, R81W, 6th P.M.

GLO Brass
Cap 1941
Elev. = 8313.
N=1419853.87
E=2732188.34

Well location, RABBIT EARS 0681 2-23H located as shown in the SW1/4NE1/4 of Section 23, T6N, R81W, 6th P.M., Jackson County, Colorado.

Sandridge Exploration & Production, LLC

BASIS OF BEARINGS:

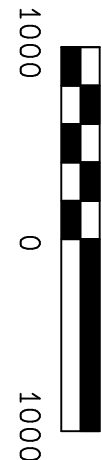
US STATE PLANE 1983
CO NORTH 0501 GRID

BASIS OF ELEVATION

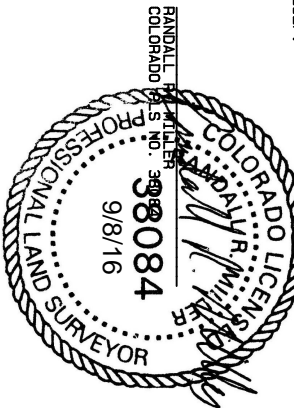
SPOT ELEVATION AT THE NW CORNER OF SECTION 23, T6N, R81W, 6TH PM, TAKEN FROM THE SPICER PEAK QUADRANGLE, USGS 7.5 MIN QUAD (TOPOGRAPHIC MAP) WITH SAID ELEVATION MARKED AS BEING 8313 FEET.

- LEGEND
- 90° SYMBOL
 - FOUND CORNER
 - PROPOSED WELL
 - PROPOSED BHL/LPL

GLO Brass Cap 1941
N=1416997.13
E=2736849.15



THIS IS TO CERTIFY THAT THE ABOVE PLAT WAS PREPARED FROM THE RECORDS OF ACTUAL SURVEY MADE BY ME OR UNDER MY SUPERVISION AND THAT THE SAME ARE TRUE AND CORRECT TO THE BEST OF MY KNOWLEDGE AND BELIEF.



NORTH PARK ENGINEERING & CONSULTING, INC.

P.O. BOX 395
WALDEN, CO 80480
(970) 723-3725

| | | | | | |
|-----------------------------|--|---------------------------------|--|----------------------------------|--|
| NAD 83 (LEASE ENTRY) | | NAD 83 (TOP OF NIOBRARA) | | NAD 83 (SURFACE LOCATION) | |
| LATITUDE=40.459381°N | | LATITUDE=40.476847°N | | LATITUDE=40.477047°N | |
| LONGITUDE=106.465659°W | | LONGITUDE=106.456052°W | | LONGITUDE=106.453979°W | |
| | | | | PDOP = 1.981 | |
| NAD 83 (TARGET BOTTOM HOLE) | | NAD 83 (LANDING POINT LOCATION) | | DATE OF FIELD WORK: MAR 20, 2016 | |
| LATITUDE=40.447554°N | | LATITUDE=40.475444°N | | DRAWING COMPLETION: JUN 8, 2016 | |
| LONGITUDE=106.469504°W | | LONGITUDE=106.458097°W | | SURVEYED BY: ADL | |
| | | | | DRAWN BY: TKH | |
| | | | | CHECKED BY: RRM | |
| | | | | REVISED: 9/7/2016 | |

T6N, R81W, 6th P.M.

GLO Brass
Cap 1941
N=1414370.46
E=2731678.53

589°00'56"E 2596.50' (Meas.)

589°29'46"E 2592.22' (Meas.)

GLO Brass
Cap 1941
N=1414325.85
E=2734274.64

GLO Brass
Cap 1941
N=1414303.06
E=2736866.76

N02°13'27"E 2701.11' (Meas.)

GLO Brass
Cap 1941
N=1411671.38
E=2731573.69

GLO Brass
Cap 1941
N=1411634.30
E=2736847.40

RABBIT EARS 0681 2-23H

Lease Entry Point
2648' FSL, 0' FWL
N=1411652.85
E=2731572.96

N02°17'06"E 2666.26' (Meas.)

GLO Brass
Cap 1941
N=1408955.81
E=2734149.35

GLO Brass W.C.
Cap 1941
N=1408871.39
E=2736836.83

N88°54'05"W 2682.46' (Meas.)

S88°12'02"E 2688.80' (Meas.)

GLO Brass
Cap 1941
N=1409007.25
E=2731467.39

| | | |
|--|--|--|
| NAD 83 (LEASE ENTRY) | NAD 83 (TOP OF NIOBRARA) | NAD 83 (SURFACE LOCATION) |
| LATITUDE=40.459381°N LONGITUDE=106.464659°W | LATITUDE=40.476847°N LONGITUDE=106.456052°W | LATITUDE=40.477047°N LONGITUDE=106.453979°W |
| NAD 83 (TARGET BOTTOM HOLE) | NAD 83 (LANDING POINT LOCATION) | |
| LATITUDE=40.447554°N LONGITUDE=106.469504°W | LATITUDE=40.475060°N LONGITUDE=106.458234°W | |

SandRidge Exploration & Production, LLC

Intermediate Section, RABBIT EARS 0681 2-23H
located as shown in the W1/2 of Section 26,
T6N, R81W, 6th P.M., Jackson County, Colorado.

BASIS OF BEARINGS:
US STATE PLANE 1983
CO NORTH 0501 GRID

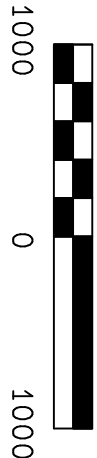
BASIS OF ELEVATION

SPOT ELEVATION AT THE NW CORNER OF SECTION 23,
T6N, R81W, 6TH PM, TAKEN FROM THE SPICER PEAK
QUADRANGLE, USGS 7.5 MIN QUAD (TOPOGRAPHIC MAP)
WITH SAID ELEVATION MARKED AS BEING 8313 FEET.

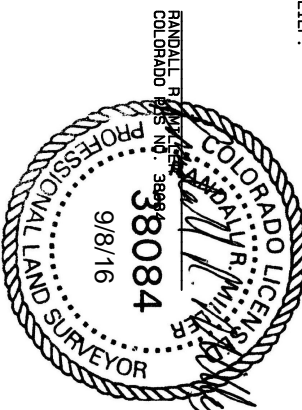
LEGEND

- 90° SYMBOL
- FOUND CORNER
- PROPOSED WELL
- PROPOSED BHL/LPL

GRAPHIC SCALE 1"=1000'



THIS IS TO CERTIFY THAT THE ABOVE PLAT WAS PREPARED FROM
FIELD NOTES OF ACTUAL SURVEY MADE BY ME OR UNDER MY
SUPERVISION AND THAT THE SAME ARE TRUE AND CORRECT TO THE
BEST OF MY KNOWLEDGE AND BELIEF.



NORTH PARK ENGINEERING &
CONSULTING, INC.

P.O. BOX 395
WALDEN, CO 80480
(970) 723-3725

DATE OF FIELD WORK: MAR 20, 2016 DRAWING COMPLETION: JUN 8, 2016
SURVEYED BY: ADL DRAWN BY: TKH CHECKED BY: RHM
REVISED: 9/7/2016

T6N, R81W, 6th P.M.

SandRidge Exploration & Production, LLC

Intermediate Section, RABBIT EARS 0681 2-23H located as shown in the E1/2SE1/4 of Section 27, T6N, R81W, 6th P.M., Jackson County, Colorado.

BASIS OF BEARINGS:

US STATE PLANE 1983
CO NORTH 0501 GRID

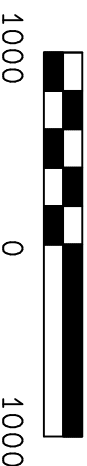
BASIS OF ELEVATION

SPOT ELEVATION AT THE NW CORNER OF SECTION 23, T6N, R81W, 6TH PM, TAKEN FROM THE SPICER PEAK QUADRANGLE, USGS 7.5 MIN QUAD (TOPOGRAPHIC MAP) WITH SAID ELEVATION MARKED AS BEING 8313 FEET.

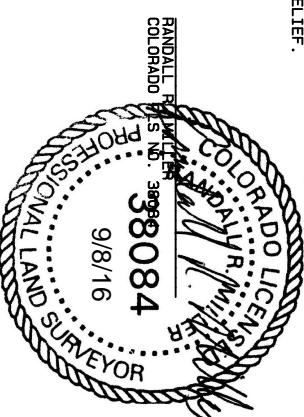
LEGEND

- 90° SYMBOL
- FOUND CORNER
- PROPOSED WELL
- PROPOSED BHL/LPL

GRAPHIC SCALE 1"=1000'



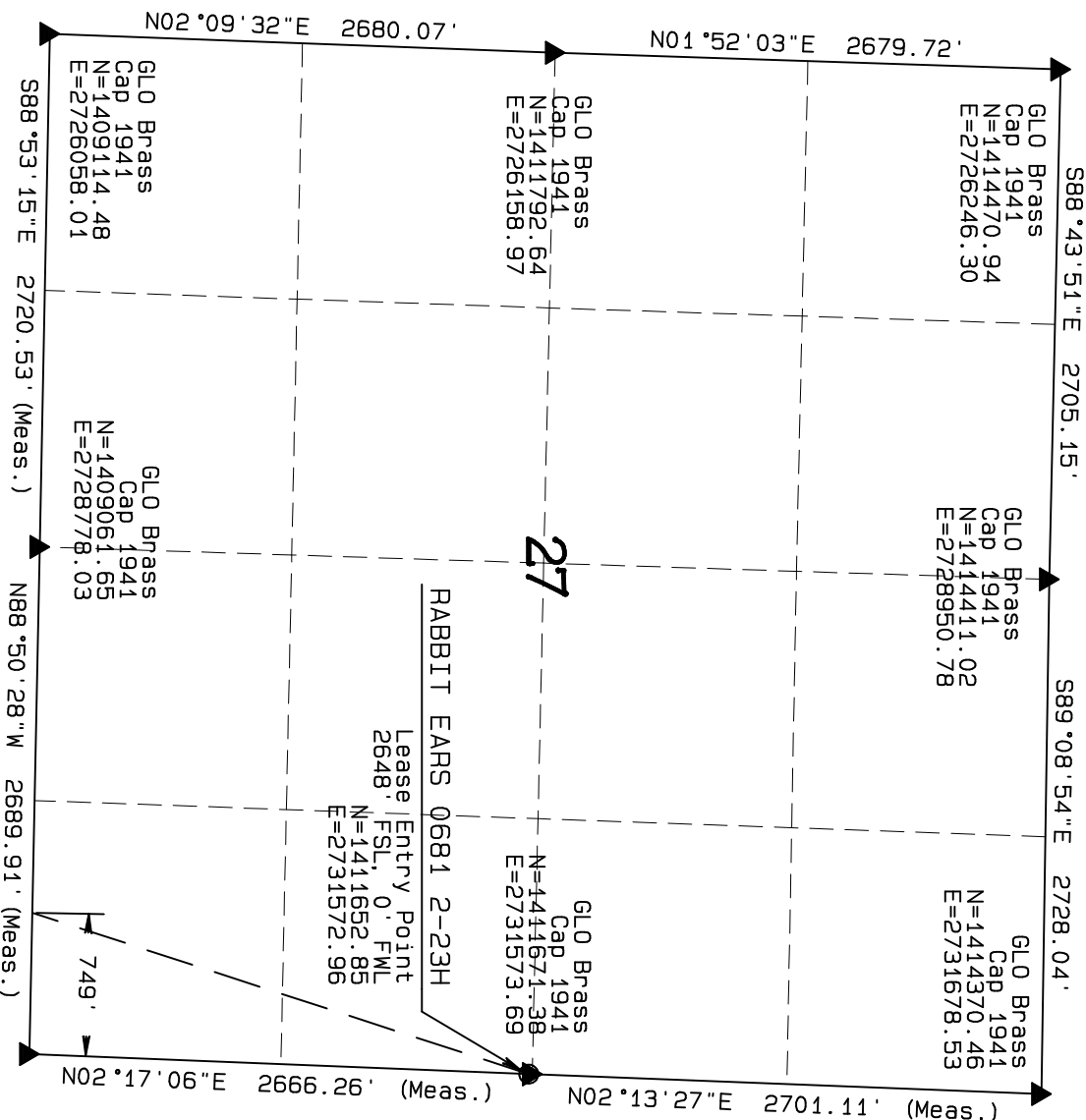
THIS IS TO CERTIFY THAT THE ABOVE PLAT WAS PREPARED FROM THE RECORDS OF ACTUAL SURVEYS MADE BY ME OR UNDER MY SUPERVISION AND THAT THE SAME ARE TRUE AND CORRECT TO THE BEST OF MY KNOWLEDGE AND BELIEF.



NORTH PARK ENGINEERING & CONSULTING, INC.

P.O. BOX 395
WALDEN, CO 80480
(970) 723-3725

DATE OF FIELD WORK: MAR 20, 2016 DRAWING COMPLETION: JUN 8, 2016
SURVEYED BY: ADL DRAWN BY: TKH CHECKED BY: RHM
REVISED: 9/7/2016



| | |
|--------------------------|---------------------------|
| NAD 83 (TOP OF NIOBRARA) | NAD 83 (SURFACE LOCATION) |
| LATITUDE=40.476847°N | LATITUDE=40.477047°N |
| LONGITUDE=106.456052°W | LONGITUDE=106.453979°W |
| | PDOP = 1.981 |

| | | |
|------------------------|-----------------------------|---------------------------------|
| NAD 83 (LEASE ENTRY) | NAD 83 (TARGET BOTTOM HOLE) | NAD 83 (LANDING POINT LOCATION) |
| LATITUDE=40.459381°N | LATITUDE=40.447554°N | LATITUDE=40.475060°N |
| LONGITUDE=106.464659°W | LONGITUDE=106.469504°W | LONGITUDE=106.458234°W |

SandRidge Exploration & Production, LLC

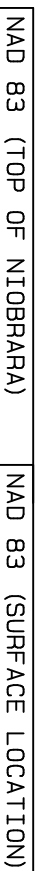
BASIS OF BEARINGS:
US STATE PLANE 1983
CO NORTH 0501 GRID

SPOT ELEVATION AT THE NW CORNER OF SECTION 23, T6N, R81W, 6TH PM, TAKEN FROM THE SPICER PEAK QUADRANGLE. USGS 7.5 MIN QUAD (TOPOGRAPHIC MAP) WITH SAID ELEVATION MARKED AS BEING 8313 FEET.

GRAPHIC SCALE 1"=1000'



RANDALL F. WILSON
 C.E.S. NO. 38084
 9/8/16
 COLORADO
 PROFESSIONAL LAND SURVEYOR



NORTH PARK ENGINEERING & CONSULTING, INC.

| | |
|----------------------------------|---------------------------------|
| DATE OF FIELD WORK: MAR 20, 2016 | DRAWING COMPLETION: JUN 8, 2016 |
| SURVEYED BY: ADL | DRAWN BY: TKH |
| | CHECKED BY: RHM |
| REVISED: 9/7/2016 | |

T6N, R81W, 6th P.M.

GLO Brass
Cap 1941
Elev. = 8313.
N=1419853.87
E=2732188.34

Well location, RABBIT EARS 0681 3-23H located
as shown in the SW1/4NE1/4 of Section 23, T6N,
R81W, 6th P.M., Jackson County, Colorado.

Sandridge Exploration & Production, LLC

BASIS OF BEARINGS:

US STATE PLANE 1983
CO NORTH 0501 GRID

BASIS OF ELEVATION

SPOT ELEVATION AT THE NW CORNER OF SECTION 23,
T6N, R81W, 6TH PM, TAKEN FROM THE SPICER PEAK
QUADRANGLE, USGS 7.5 MIN QUAD (TOPOGRAPHIC MAP)
WITH SAID ELEVATION MARKED AS BEING 8313 FEET.

LEGEND

90° SYMBOL
FOUND CORNER
PROPOSED WELL
PROPOSED BHL/LPL

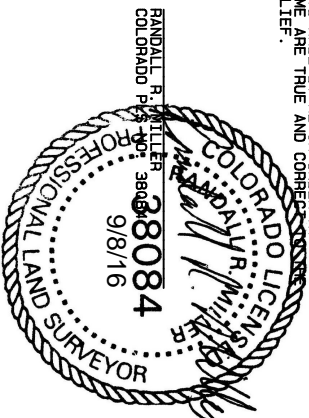
GLO Brass Cap 1941
N=1416997.13
E=2736849.15

25

1000 0 1000

GRAPHIC SCALE 1"=1000'

THIS IS TO CERTIFY THAT THE ABOVE PLAT WAS PREPARED FROM
THE RECORDS OF ACTUAL SURVEYS MADE BY ME OR UNDER MY
SUPERVISION AND THAT THE SAME ARE TRUE AND CORRECT
BEST OF MY KNOWLEDGE AND BELIEF.



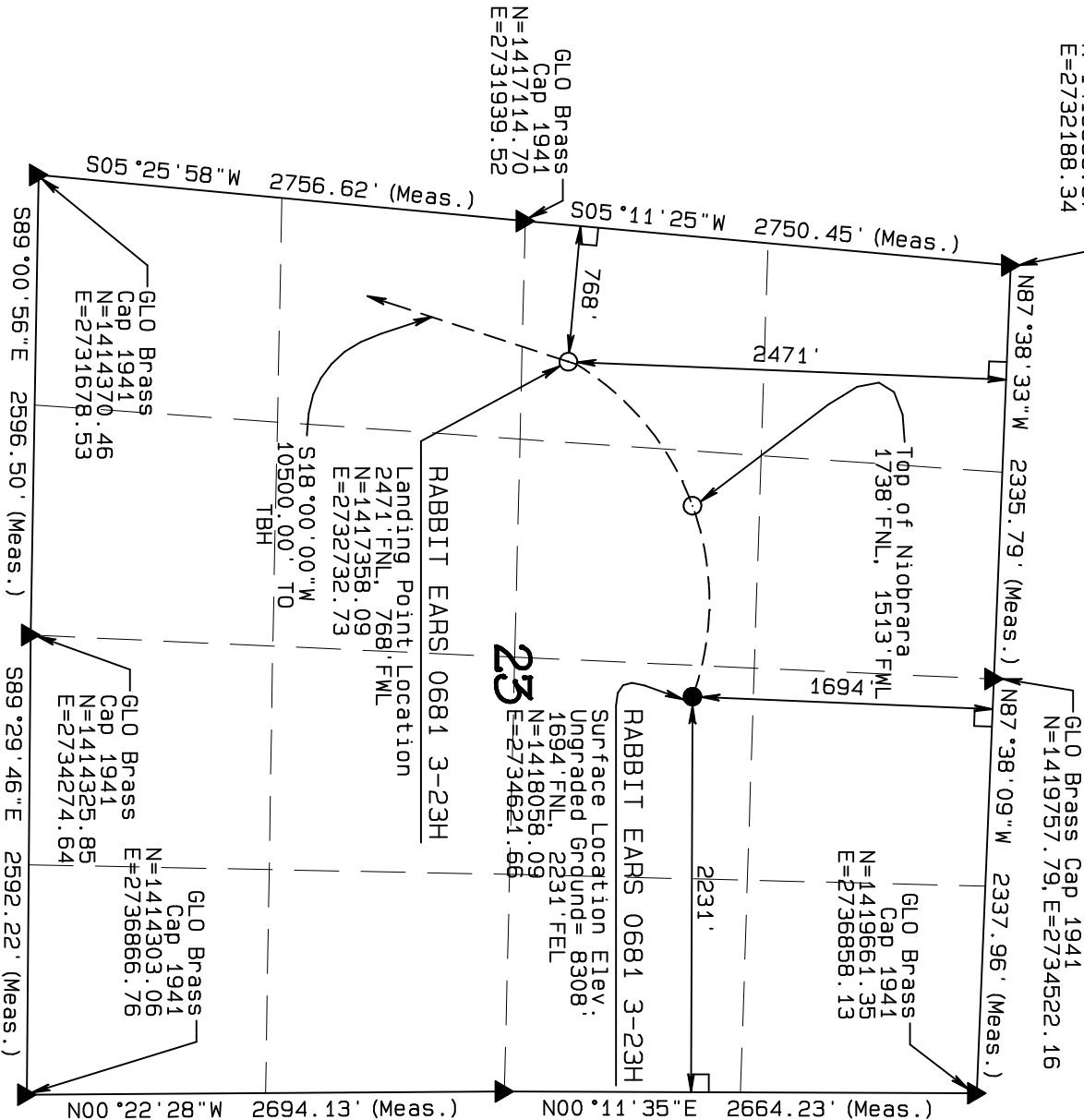
NORTH PARK ENGINEERING &
CONSULTING, INC.

P.O. BOX 395
WALDEN, CO 80480
(970) 723-3725

DATE OF FIELD WORK: MAR 20, 2016 DRAWING COMPLETION: JUN 8, 2016

SURVEYED BY: ADL DRAWN BY: TKH CHECKED BY: RRM

REVISED: 9/7/2016



NAD 83 (TOP OF NIOBRARA)

NAD 83 (SURFACE LOCATION)

LATITUDE=40.477021°N
LONGITUDE=106.457822°W

LATITUDE=40.477052°N
LONGITUDE=106.453952°W

PDOP = 1.912

NAD 83 (LEASE ENTRY)

NAD 83 (TARGET BOTTOM HOLE)

NAD 83 (LANDING POINT LOCATION)

LATITUDE=40.463144°N
LONGITUDE=106.465603°W

LATITUDE=40.447568°N
LONGITUDE=106.471983°W

LATITUDE=40.475862°N
LONGITUDE=106.460393°W

T6N, R81W, 6th P.M.

GLO Brass
Cap 1941
N=1414370.46
E=2731678.53

589°00'56"E 2596.50' (Meas.) 589°29'46"E 2592.22' (Meas.)

GLO Brass
Cap 1941
N=1414325.85
E=2734274.64

RABBIT EARS 0681 3-23H
Horizontal Well Location
292' FNL, 83' FWL

GLO Brass
Cap 1941
N=1411571.38
E=2731573.69

GLO Brass
Cap 1941
N=1411634.30
E=2736847.40

GLO Brass
Cap 1941
N=1408955.81
E=2734149.35

GLO Brass W.C.
Cap 1941
N=1408871.39
E=2736836.83

GLO Brass
Cap 1941
N=1409007.25
E=2731467.39

SandRidge Exploration & Production, LLC

Intermediate Section, RABBIT EARS 0681 3-23H
located as shown in the NW1/4NW1/4 of Section 26,
T6N, R81W, 6th P.M., Jackson County, Colorado.

BASIS OF BEARINGS:

US STATE PLANE 1983
CO NORTH 0501 GRID

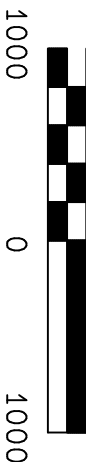
BASIS OF ELEVATION

SPOT ELEVATION AT THE NW CORNER OF SECTION 23,
T6N, R81W, 6TH PM, TAKEN FROM THE SPICER PEAK
QUADRANGLE, USGS 7.5 MIN QUAD (TOPOGRAPHIC MAP)
WITH SAID ELEVATION MARKED AS BEING 8313 FEET.

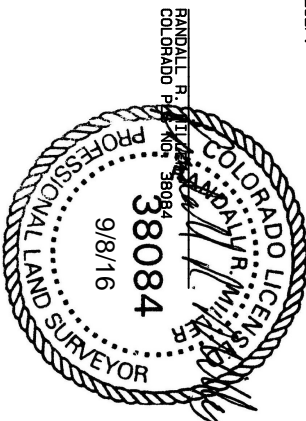
LEGEND

- 90° SYMBOL
- FOUND CORNER
- PROPOSED WELL
- PROPOSED BHL/LPL

GRAPHIC SCALE 1"=1000'



THIS IS TO CERTIFY THAT THE ABOVE PLAT WAS PREPARED FROM
FIELD NOTES OF ACTUAL SURVEY MADE BY ME OR UNDER MY
SUPERVISION AND THAT THE SAME ARE TRUE AND CORRECT TO THE
BEST OF MY KNOWLEDGE AND BELIEF.



NORTH PARK ENGINEERING &
CONSULTING, INC.

P.O. BOX 395
WALDEN, CO 80480
(970) 723-3725

DATE OF FIELD WORK: MAR 20, 2016 DRAWING COMPLETION: JUN 8, 2016
SURVEYED BY: ADL DRAWN BY: TKH CHECKED BY: RHM
REVISED: 9/7/2016

NAD 83 (TOP OF NIOBRARA)

LATITUDE=40.477021°N
LONGITUDE=106.457822°W
PDOP = 1.912

NAD 83 (TARGET BOTTOM HOLE)

LATITUDE=40.447568°N
LONGITUDE=106.471983°W

NAD 83 (LEASE ENTRY)

LATITUDE=40.463144°N
LONGITUDE=106.465603°W

T6N, R81W, 6th P.M.

SandRidge Exploration & Production, LLC

Intermediate Section, RABBIT EARS 0681 3-23H located as shown in the E1/2 of Section 27, T6N, R81W, 6th P.M., Jackson County, Colorado.

BASIS OF BEARINGS:

US STATE PLANE 1983
CO NORTH 0501 GRID

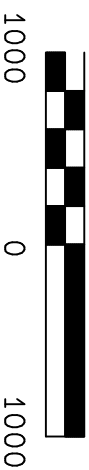
BASIS OF ELEVATION

SPOT ELEVATION AT THE NW CORNER OF SECTION 23, T6N, R81W, 6TH PM, TAKEN FROM THE SPICER PEAK QUADRANGLE, USGS 7.5 MIN QUAD (TOPOGRAPHIC MAP) WITH SAID ELEVATION MARKED AS BEING 8313 FEET.

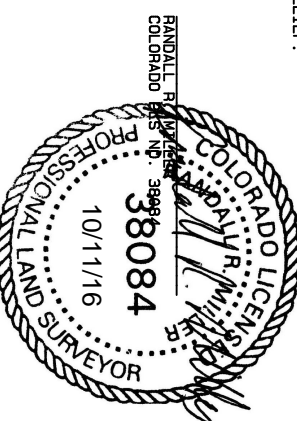
LEGEND

- 90° SYMBOL
- FOUND CORNER
- PROPOSED WELL
- PROPOSED BHL/LPL

GRAPHIC SCALE 1"=1000'



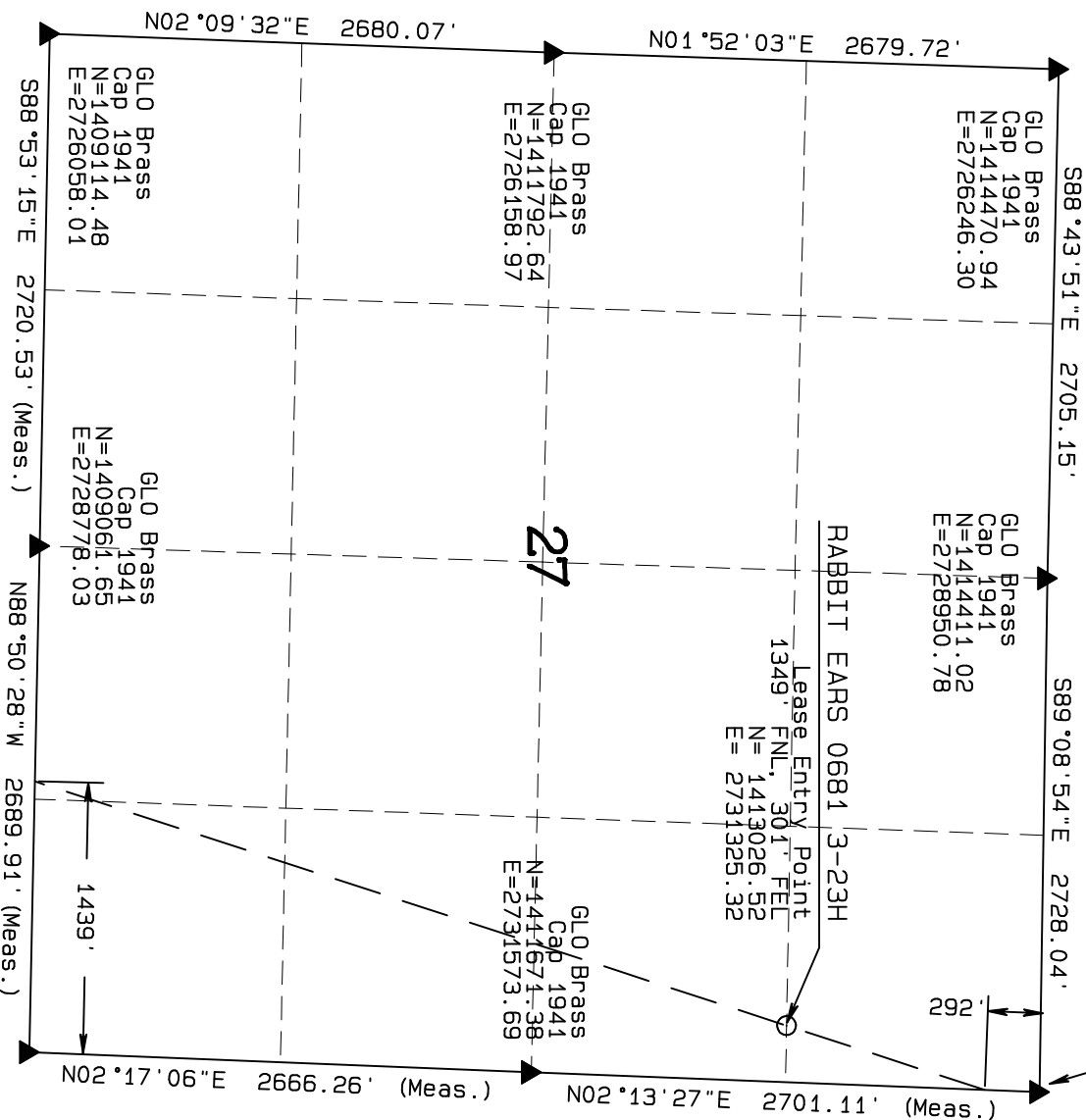
THIS IS TO CERTIFY THAT THE ABOVE PLAT WAS PREPARED FROM THE RECORDS OF ACTUAL SURVEYS MADE BY ME OR UNDER MY SUPERVISION AND THAT THE SAME ARE TRUE AND CORRECT TO THE BEST OF MY KNOWLEDGE AND BELIEF.



NORTH PARK ENGINEERING & CONSULTING, INC.

P.O. BOX 395
WALDEN, CO 80480
(970) 723-3725

DATE OF FIELD WORK: MAR 20, 2016 DRAWING COMPLETION: JUN 8, 2016
SURVEYED BY: ADL DRAWN BY: TKH CHECKED BY: RHM
REVISED: 9/7/2016



| | | |
|--|--|--|
| NAD 83 (LEASE ENTRY) | NAD 83 (TOP OF NIOBRARA) | NAD 83 (SURFACE LOCATION) |
| LATITUDE=40.463144°N LONGITUDE=106.465603°W | LATITUDE=40.477021°N LONGITUDE=106.457822°W | LATITUDE=40.477052°N LONGITUDE=106.453952°W |
| NAD 83 (TARGET BOTTOM HOLE) | NAD 83 (LANDING POINT LOCATION) | |
| LATITUDE=40.447568°N LONGITUDE=106.471983°W | LATITUDE=40.475075°N LONGITUDE=106.460714°W | |

PDOP = 1.912

T6N, R81W, 6th P.M.

Sandridge Exploration & Production, LLC

Target Bottom Hole, RABBIT EARS 0681 3-23H located in the SW1/4NE1/4 of Section 34, T6N, R81W, 6th P.M., Jackson County, Colorado.

BASIS OF BEARINGS:

US STATE PLANE 1983
CO NORTH 0501 GRID

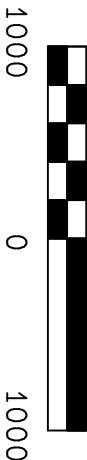
BASIS OF ELEVATION

SPOT ELEVATION AT THE NW CORNER OF SECTION 23, T6N, R81W, 6TH PM, TAKEN FROM THE SPICER PEAK QUADRANGLE, USGS 7.5 MIN QUAD (TOPOGRAPHIC MAP) WITH SAID ELEVATION MARKED AS BEING 8313 FEET.

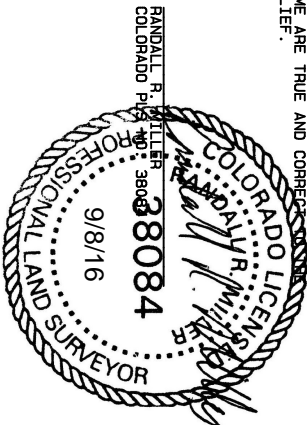
LEGEND

- 90° SYMBOL
- FOUND CORNER
- PROPOSED WELL
- PROPOSED BHL/LPL

GRAPHIC SCALE 1"=1000'



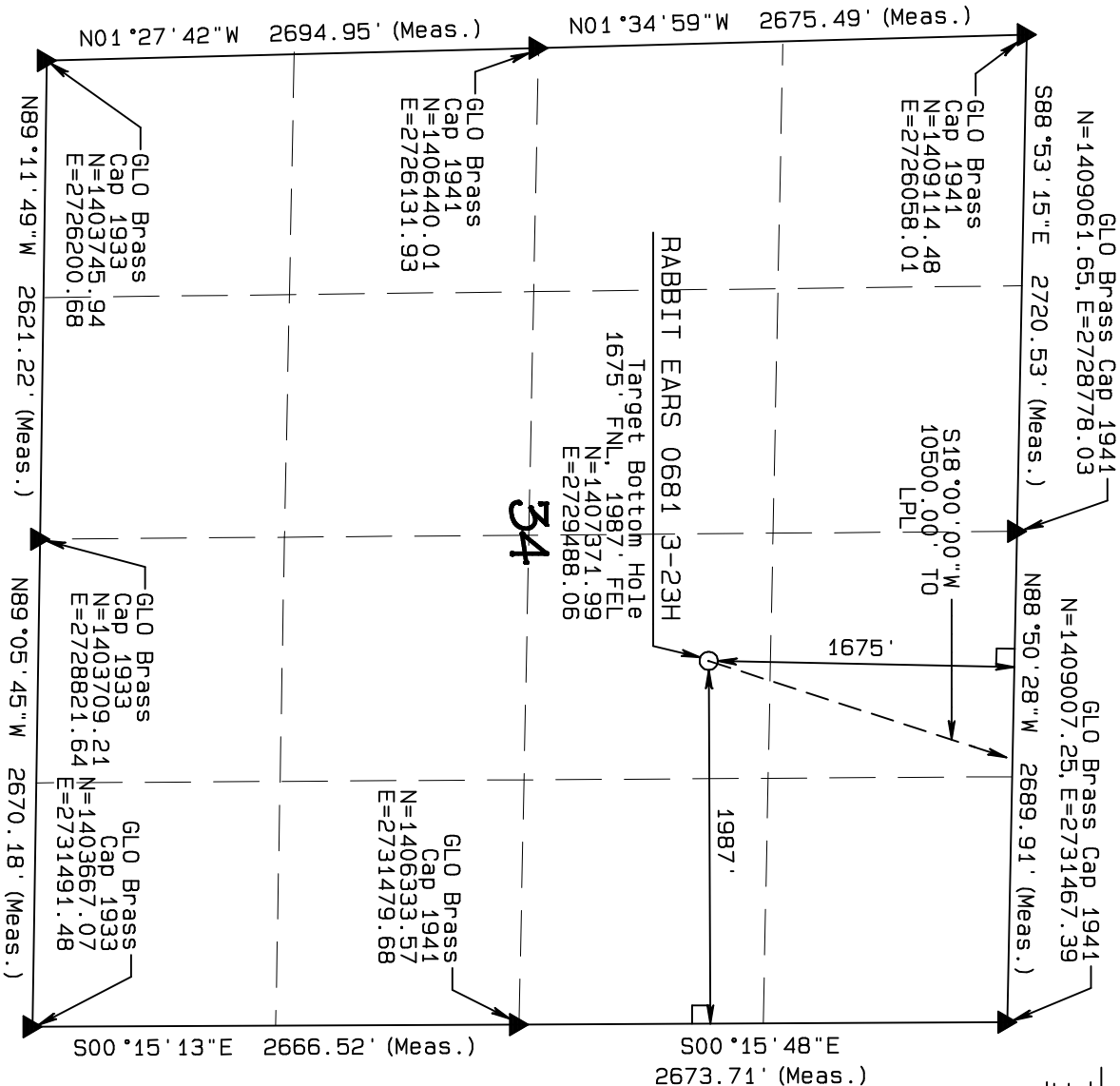
THIS IS TO CERTIFY THAT THE ABOVE PLAT WAS PREPARED FROM THE RECORDS OF ACTUAL SURVEYS MADE BY ME OR UNDER MY SUPERVISION AND THAT THE SAME ARE TRUE AND CORRECT TO THE BEST OF MY KNOWLEDGE AND BELIEF.



NORTH PARK ENGINEERING & CONSULTING, INC.

P.O. BOX 395
WALDEN, CO 80480
(970) 723-3725

DATE OF FIELD WORK: MAR 20, 2016 DRAWING COMPLETION: JUN 8, 2016
SURVEYED BY: ADL DRAWN BY: TKH CHECKED BY: RHM
REVISED: 9/7/2016



NAD 83 (TOP OF NIOBRARA)

LATITUDE=40.477021°N
LONGITUDE=106.457822°W
PDOP = 1.912

NAD 83 (TARGET BOTTOM HOLE)

LATITUDE=40.447568°N
LONGITUDE=106.471983°W

NAD 83 (LEASE ENTRY)

LATITUDE=40.463144°N
LONGITUDE=106.465603°W

NAD 83 (SURFACE LOCATION)

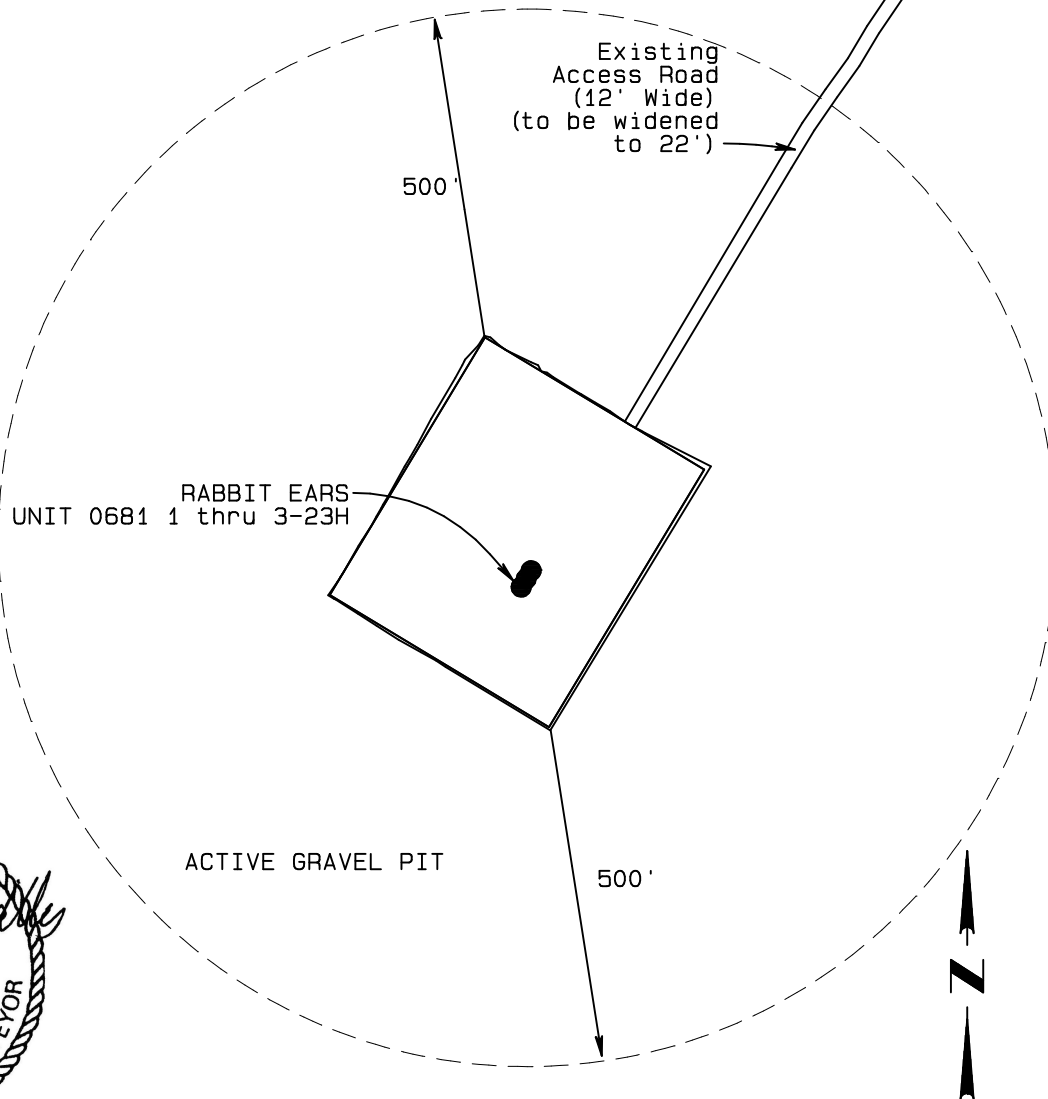
LATITUDE=40.477052°N
LONGITUDE=106.453952°W

NAD 83 (LANDING POINT LOCATION)

LATITUDE=40.475075°N
LONGITUDE=106.460714°W

SandRidge Exploration & Production, LLC

LOCATION OVERVIEW DRAWING
RABBIT EARS UNIT 0681 S23 PAD
SW1/4NE1/4 of SECTION 23,
T6N, R81W, 6th P.M.



GRAPHIC SCALE 1"=300'



DISTURBED AREA FOR DRILL PAD

BEFORE RECLAMATION:
PAD TOTAL=4.63 Ac

AFTER RECLAMATION:
PAD TOTAL=4.63 Ac

NO RECLAMATION OF THE DRILL PAD
IS REQUIRED DUE TO CURRENT AND
FUTURE USE OF AREA (GRAVEL PIT)

| CULTURAL FEATURE TABLE FROM PROD FACILITIES | | |
|---|------------|--------|
| EXISTING FEATURE | DIRECTION | LENGTH |
| BUILDING | S 58.93° E | 1585' |
| BUILDING UNIT | S 58.93° E | 1585' |
| HIGH OCC. BUILDING UNIT | | +5280' |
| DESIGNATED OUTSIDE AREA | | +5280' |
| PUBLIC ROAD (JCR14) | S 46.25° E | 781' |
| POWER LINE | S 45.65° E | 952' |
| RAILROAD | | +5280' |
| PROPERTY LINE | N 46.87° E | 814' |

CURRENT LAND USE

☐ CROP LAND ☐ IRRIGATED ☐ DRY LAND ☐ IMPROVED PASTURE ☐ HAY MEADOW ☐ CRP
☐ NON-CROP LAND ☐ RANGELAND ☐ TIMBER ☐ RECREATIONAL ☒ OTHER (Describe)
☐ SUBDIVIDED ☐ INDUSTRIAL ☐ COMMERCIAL ☐ RESIDENTIAL GRAVEL PIT

FUTURE LAND USE

☐ CROP LAND ☐ IRRIGATED ☐ DRY LAND ☐ IMPROVED PASTURE ☐ HAY MEADOW ☐ CRP
☐ NON-CROP LAND ☐ RANGELAND ☐ TIMBER ☐ RECREATIONAL ☒ OTHER (Describe)
☐ SUBDIVIDED ☐ INDUSTRIAL ☐ COMMERCIAL ☐ RESIDENTIAL GRAVEL PIT

PLANT COMMUNITY

☒ DISTURBED GRASSLAND
☐ NATIVE GRASSLAND
☐ SHRUB LAND
☐ PLAINS RIPARIAN
☐ MOUNTAIN RIPARIAN
☐ FOREST LAND
☐ WETLANDS AQUATIC
☐ ALPINE
☐ OTHER (Describe): _____

DRAWING REVISED: 12/8/2016

NORTH PARK ENGINEERING & CONSULTING, INC.
PO Box 395 Walden, CO 80480 970-723-3725

SandRidge Exploration & Production, LLC

LOCATION OVERVIEW DRAWING
RABBIT EARS 0681 S23 PAD
SW1/4NE1/4 of SECTION 23,
T6N, R81W, 6th P.M.

RABBIT EARS 0681 1-23H

SURFACE LOCATION

| CULTURAL FEATURE TABLE FROM WELLHEAD | | |
|--------------------------------------|------------|--------|
| EXISTING FEATURE | DIRECTION | LENGTH |
| BUILDING | S 62.02° E | 1738' |
| BUILDING UNIT | S 62.02° E | 1738' |
| HIGH OCC. BUILDING UNIT | | +5280' |
| DESIGNATED OUTSIDE AREA | | +5280' |
| PUBLIC ROAD (JCR14) | S 45.80° E | 965' |
| POWER LINE | S 45.90° E | 1136' |
| RAILROAD | | +5280' |
| PROPERTY LINE | N 46.87° E | 996' |

RABBIT EARS UNIT 2-23H

SURFACE LOCATION

| CULTURAL FEATURE TABLE FROM WELLHEAD | | |
|--------------------------------------|------------|--------|
| EXISTING FEATURE | DIRECTION | LENGTH |
| BUILDING | S 61.53° E | 1737' |
| BUILDING UNIT | S 61.53° E | 1737' |
| HIGH OCC. BUILDING UNIT | | +5280' |
| DESIGNATED OUTSIDE AREA | | +5280' |
| PUBLIC ROAD (JCR14) | S 44.02° E | 968' |
| POWER LINE | S 44.19° E | 1139' |
| RAILROAD | | +5280' |
| PROPERTY LINE | N 47.35° E | 964' |

RABBIT EARS 0681 3-23H

SURFACE LOCATION

| CULTURAL FEATURE TABLE FROM WELLHEAD | | |
|--------------------------------------|------------|--------|
| EXISTING FEATURE | DIRECTION | LENGTH |
| BUILDING | S 61.04° E | 1737' |
| BUILDING UNIT | S 61.04° E | 1737' |
| HIGH OCC. BUILDING UNIT | | +5280' |
| DESIGNATED OUTSIDE AREA | | +5280' |
| PUBLIC ROAD (JCR14) | S 43.18° E | 972' |
| POWER LINE | S 44.48° E | 1143' |
| RAILROAD | | +5280' |
| PROPERTY LINE | N 47.62° E | 950' |



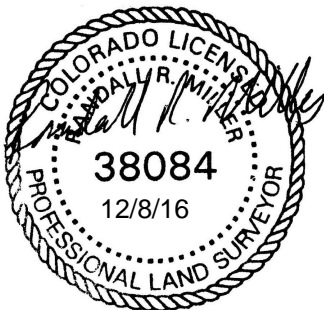
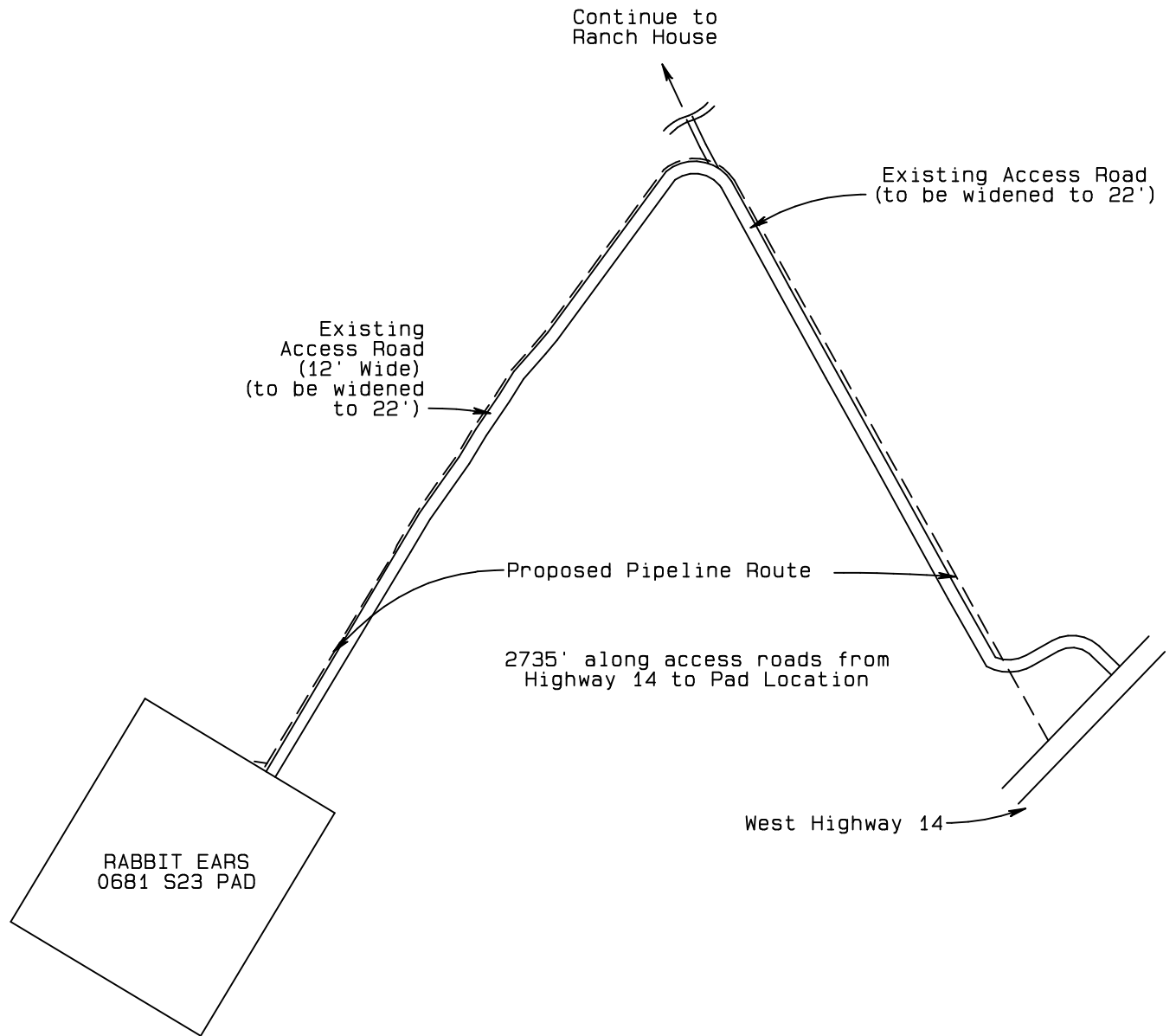
SandRidge Exploration & Production, LLC

ACCESS ROAD AND PROPOSED PIPELINE DRAWING

RABBIT EARS 0681 S23 PAD

SW1/4NE1/4 of SECTION 23,

T6N, R81W, 6th P.M.

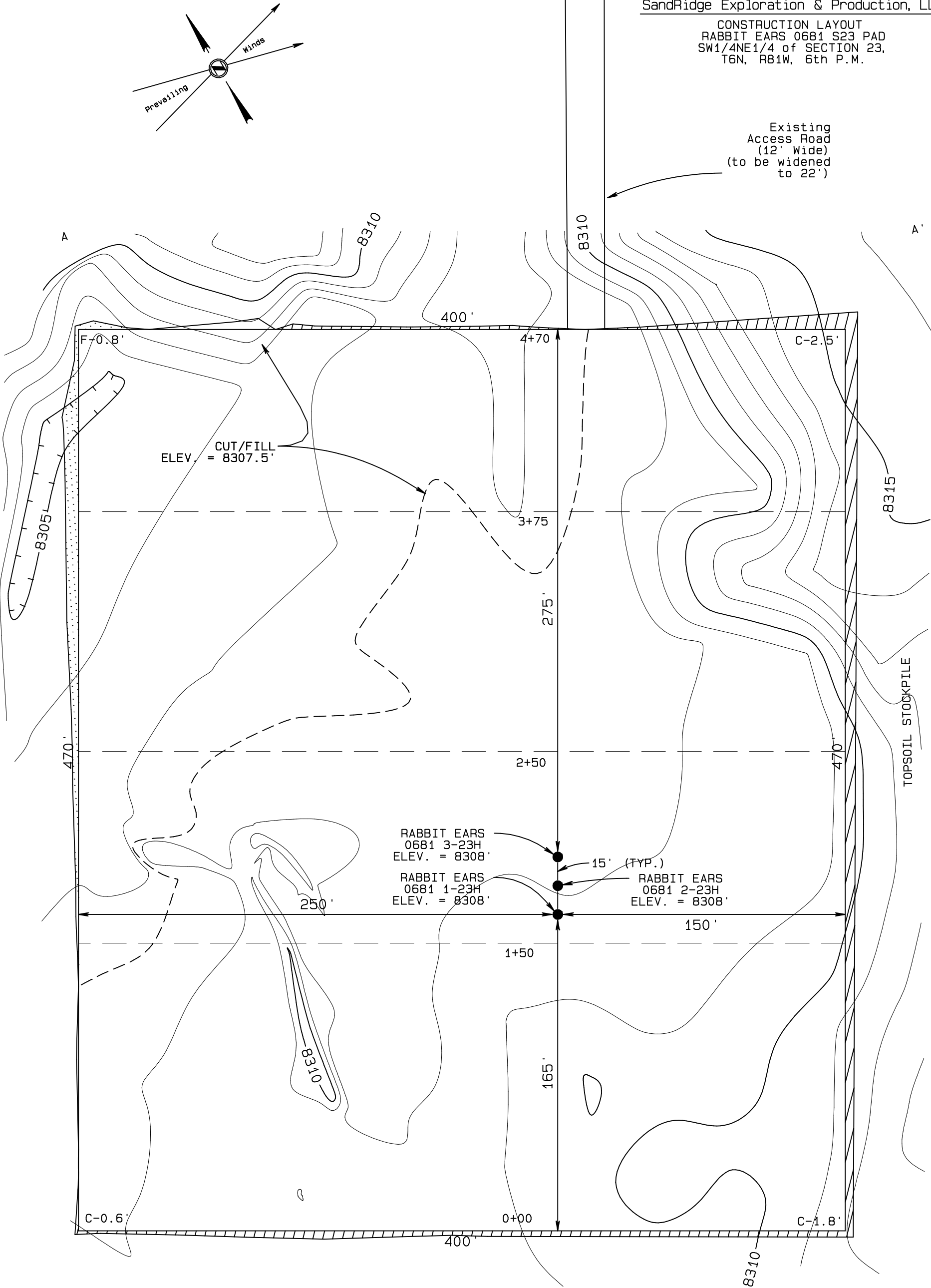


GRAPHIC SCALE 1"=300'



DRAWING REVISED: 12/8/2016

Existing
Access Road
(12' Wide)
(to be widened
to 22')



Final Pad Elevation = 8307.5'
Elev. for Surface Locations
are at Ungraded Ground

Earthwork:

Total Excavation - 1460 Cu. Yd.
Pad Fill/Borrow - 1460 Cu. Yd.
Topsoil Stockpile - None (due to location in gravel pit)
Total Pad (Disturbed) = 4.63 acres

BASIS OF ELEVATION

SPOT ELEVATION AT THE NW CORNER OF SECTION 23,
T6N, R81W, 6TH PM, TAKEN FROM THE SPICER PEAK
QUADRANGLE, USGS 7.5 MIN QUAD (TOPOGRAPHIC MAP)
WITH SAID ELEVATION MARKED AS BEING 8313 FEET.

CUT AREA
FILL AREA

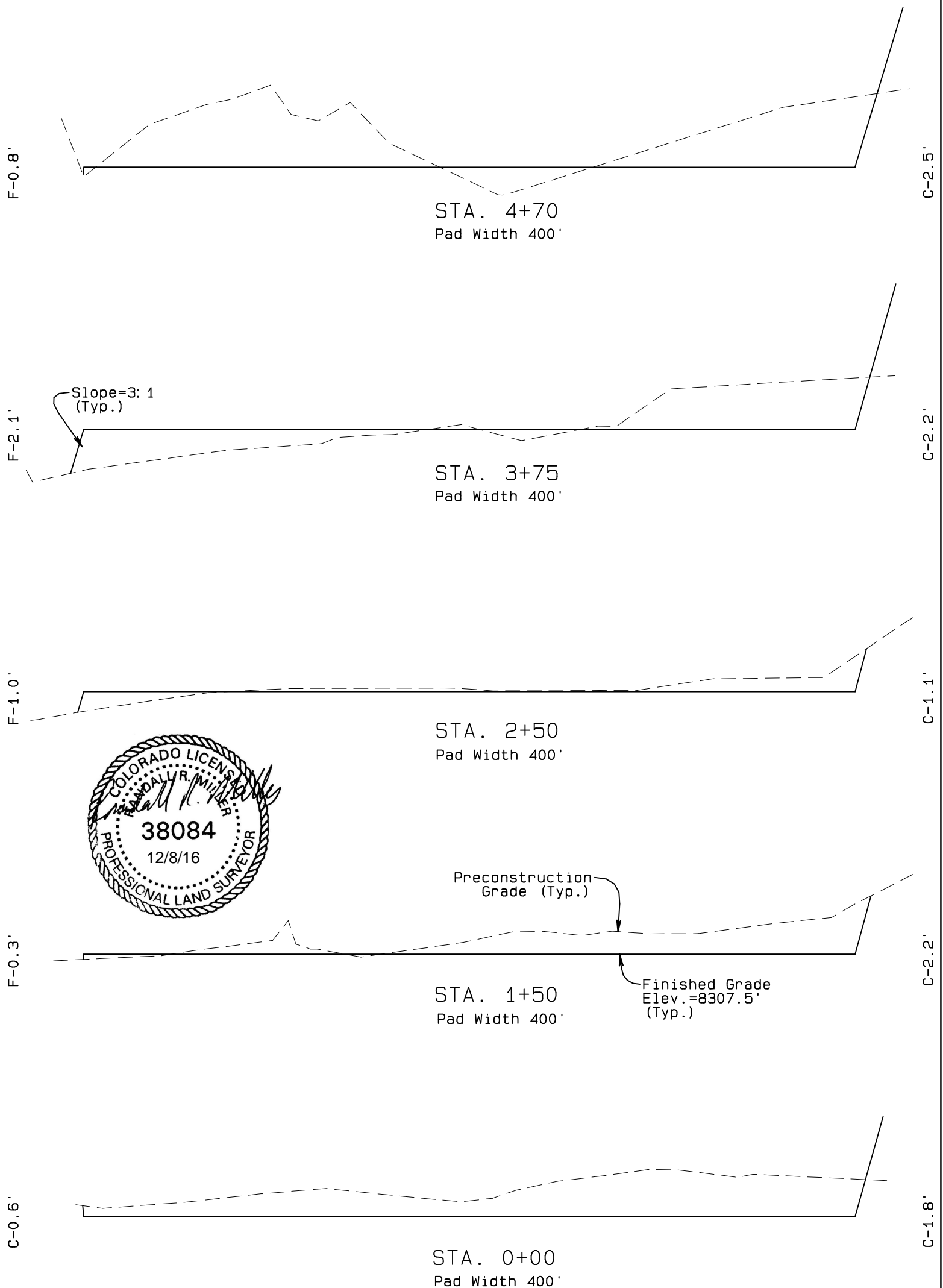


DRAWING REVISED: 12/8/2016



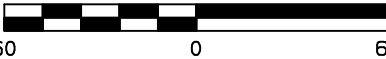
SandRidge Exploration & Production, LLC

CONSTRUCTION LAYOUT CROSS SECTION
RABBIT EARS 0681 S23 PAD
SW1/4NE1/4 of SECTION 23,
T6N, R81W, 6th P.M.



DRAWING REVISED: 12/8/2016

Vertical Exageration = 10 Times
GRAPHIC SCALE 1"=60'



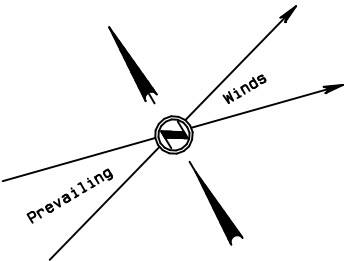
BASIS OF ELEVATION

SPOT ELEVATION AT THE NW CORNER OF SECTION 23,
T6N, R81W, 6TH PM, TAKEN FROM THE SPICER PEAK
QUADRANGLE, USGS 7.5 MIN QUAD (TOPOGRAPHIC MAP)
WITH SAID ELEVATION MARKED AS BEING 8313 FEET.

NORTH PARK ENGINEERING & CONSULTING, INC.
PO Box 395 Walden, CO 80480 970-723-3725

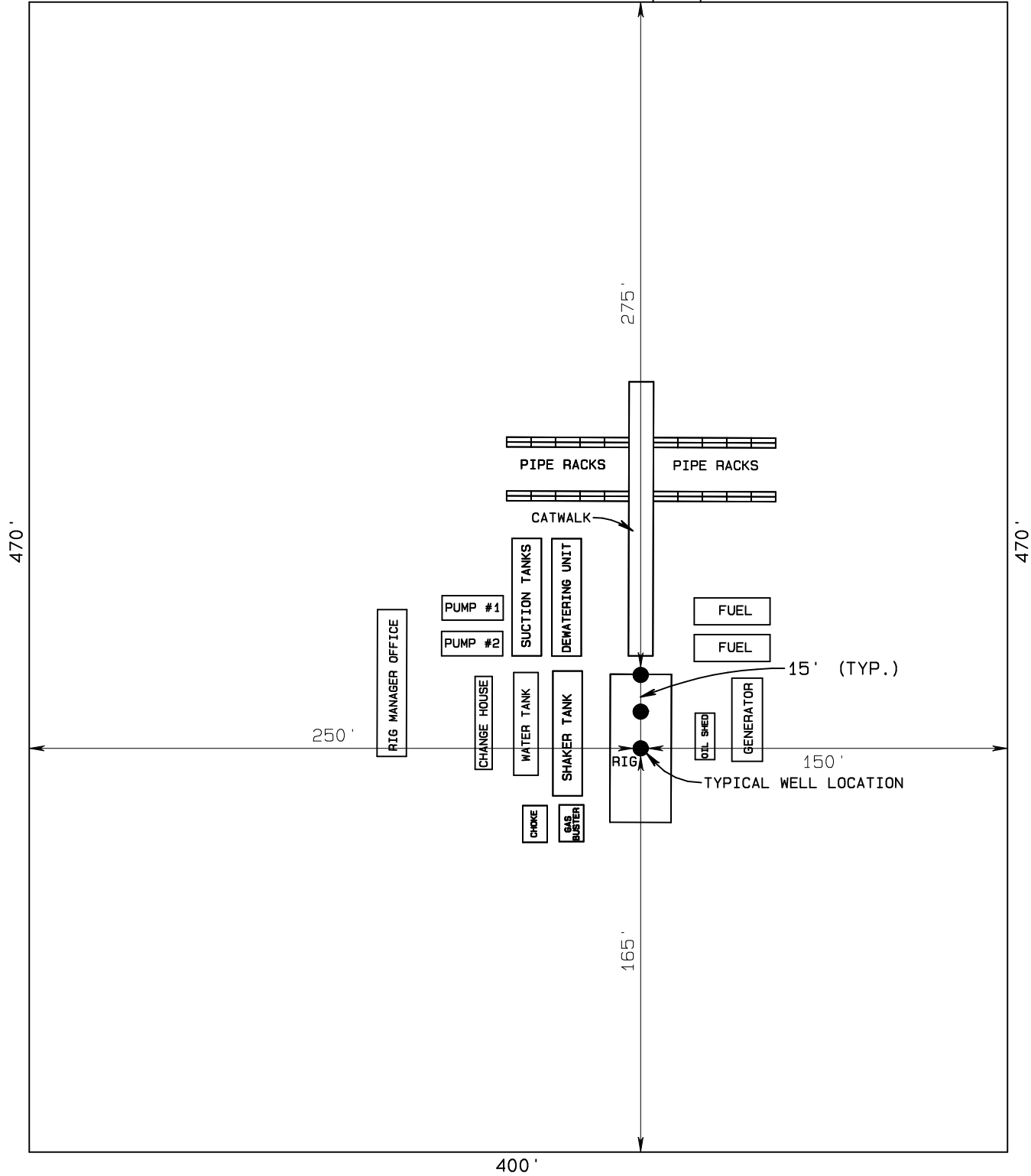
SandRidge Exploration & Production, LLC

TYPICAL RIG LAYOUT
RABBIT EARS 0681 S23 PAD
SW1/4NE1/4 of SECTION 23,
T6N, R81W, 6th P.M.

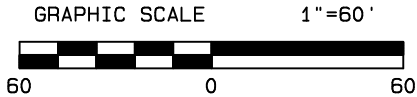


Existing
Access Road
(12' Wide)
(to be widened
to 22')

400'



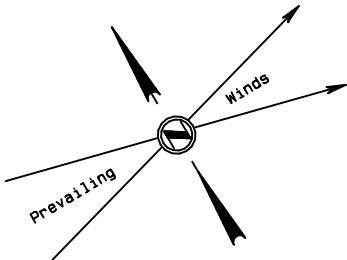
DRAWING REVISED: 12/8/2016



Final Pad Elevation = 8307.5'

NORTH PARK ENGINEERING & CONSULTING, INC.
PO Box 395 Walden, CO 80480 970-723-3725

SandRidge Exploration & Production, LLC
PRODUCTION FACILITY LAYOUT
RABBIT EARS 0681 S23 PAD
SW1/4NE1/4 of SECTION 23,
T6N, R81W, 6th P.M.

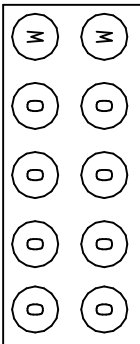


Existing
Access Road
(12' Wide)
(to be widened
to 22')

LP COMBUSTOR

400'

LP COMBUSTOR



(8) 1100BBL
OIL TANKS

(2) 1100BBL
WATER TANKS

275'

470'

470'

8' HEATER TREATER

8' HEATER TREATER

250'

RABBIT EARS
0681 3-23H

15' (TYP.)

RABBIT EARS
0681 1-23H

RABBIT EARS
0681 2-23H

150'

GAS SCRUBBER

GAS SCRUBBER



GAS METERS



HP COMBUSTOR

165'

400'



DRAWING REVISED: 12/8/2016

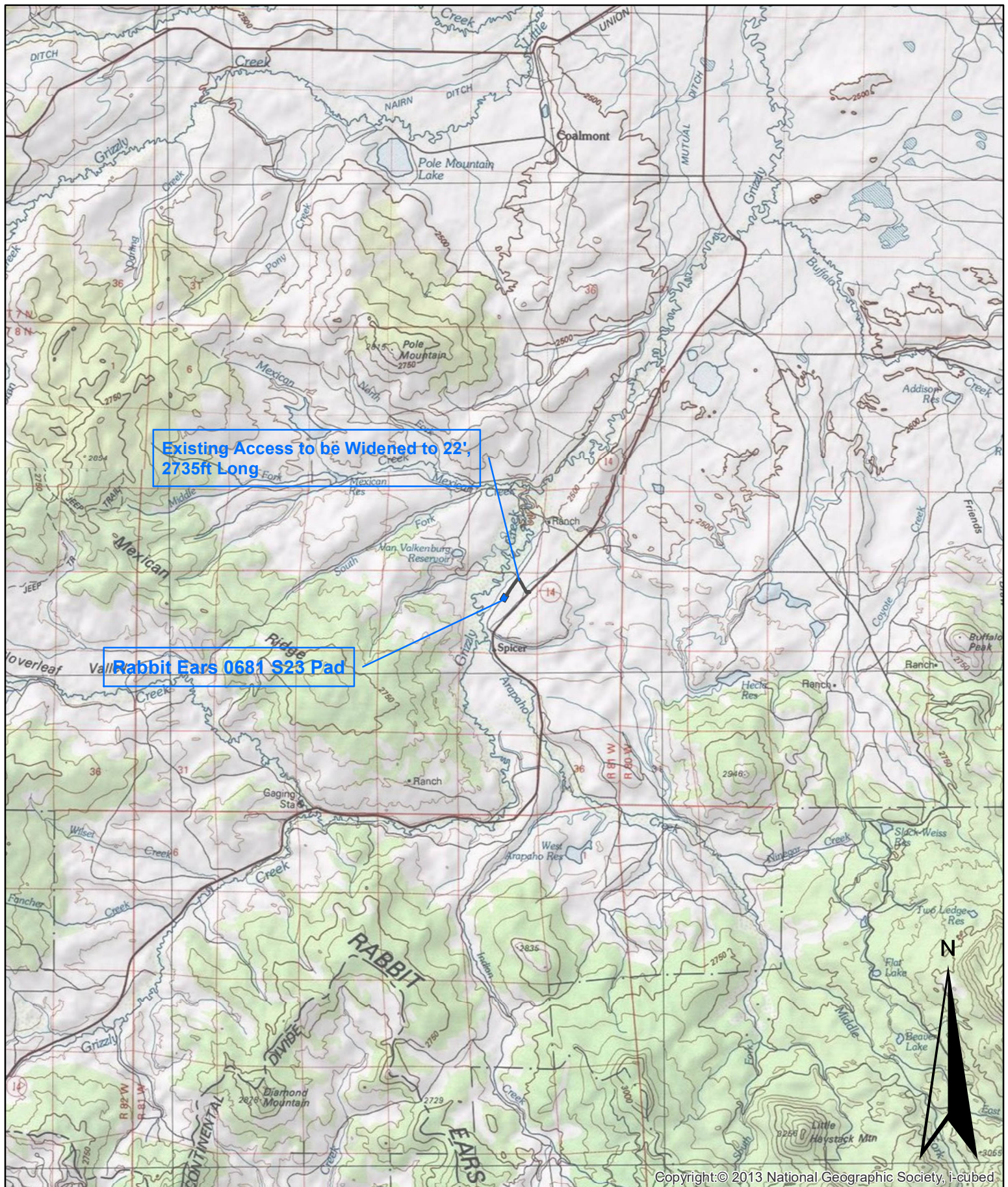
GRAPHIC SCALE 1"=60'



Final Pad Elevation = 8307.5'

NORTH PARK ENGINEERING & CONSULTING, INC.
PO Box 395 Walden, CO 80480 970-723-3725

Rabbit Ears 0681 S23 100k Map w/ Access



Copyright: © 2013 National Geographic Society, i-cubed

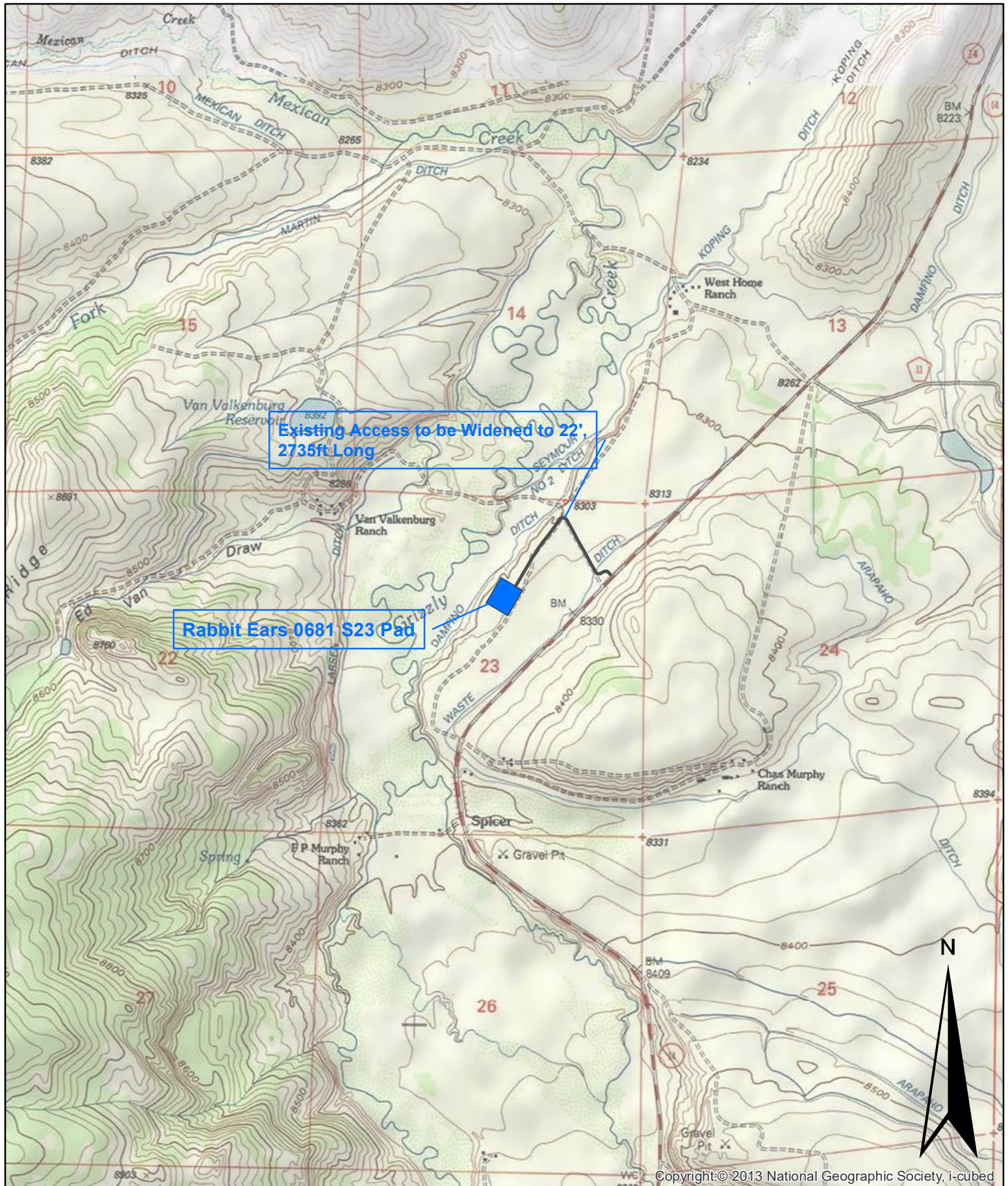
1:100,000

Miles

0 1 2 4

Sandridge Exploration
& Production, LLC

Rabbit Ears 0681 S23 24k Map w/ Access

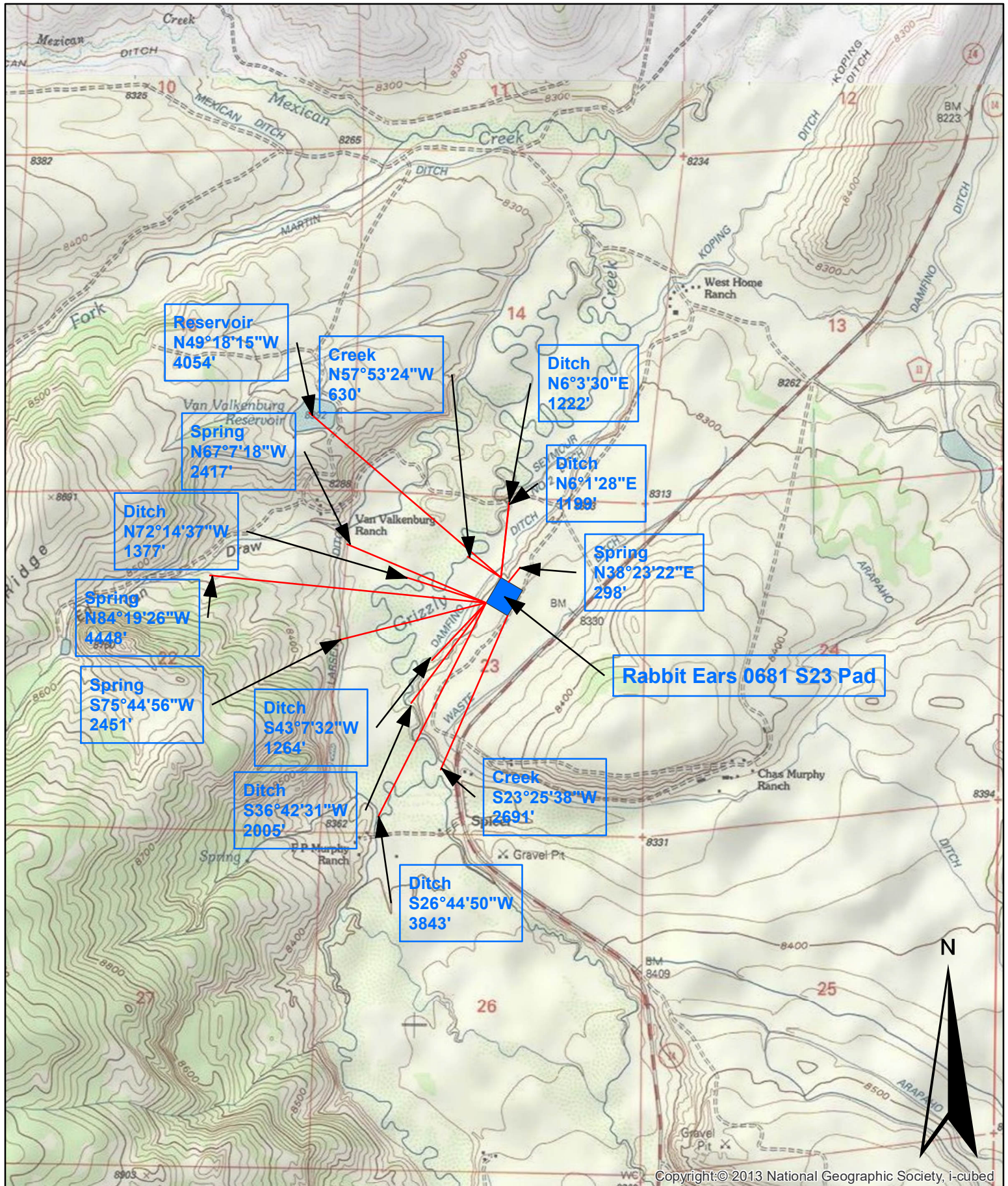


1:24,000

0 0.25 0.5 1 Miles

Sandridge Exploration
& Production, LLC

Rabbit Ears 0681 S23 Hydrology Map



Copyright: © 2013 National Geographic Society, i-cubed

1:24,000

0 0.25 0.5 1 Miles

Sandridge Exploration
& Production, LLC

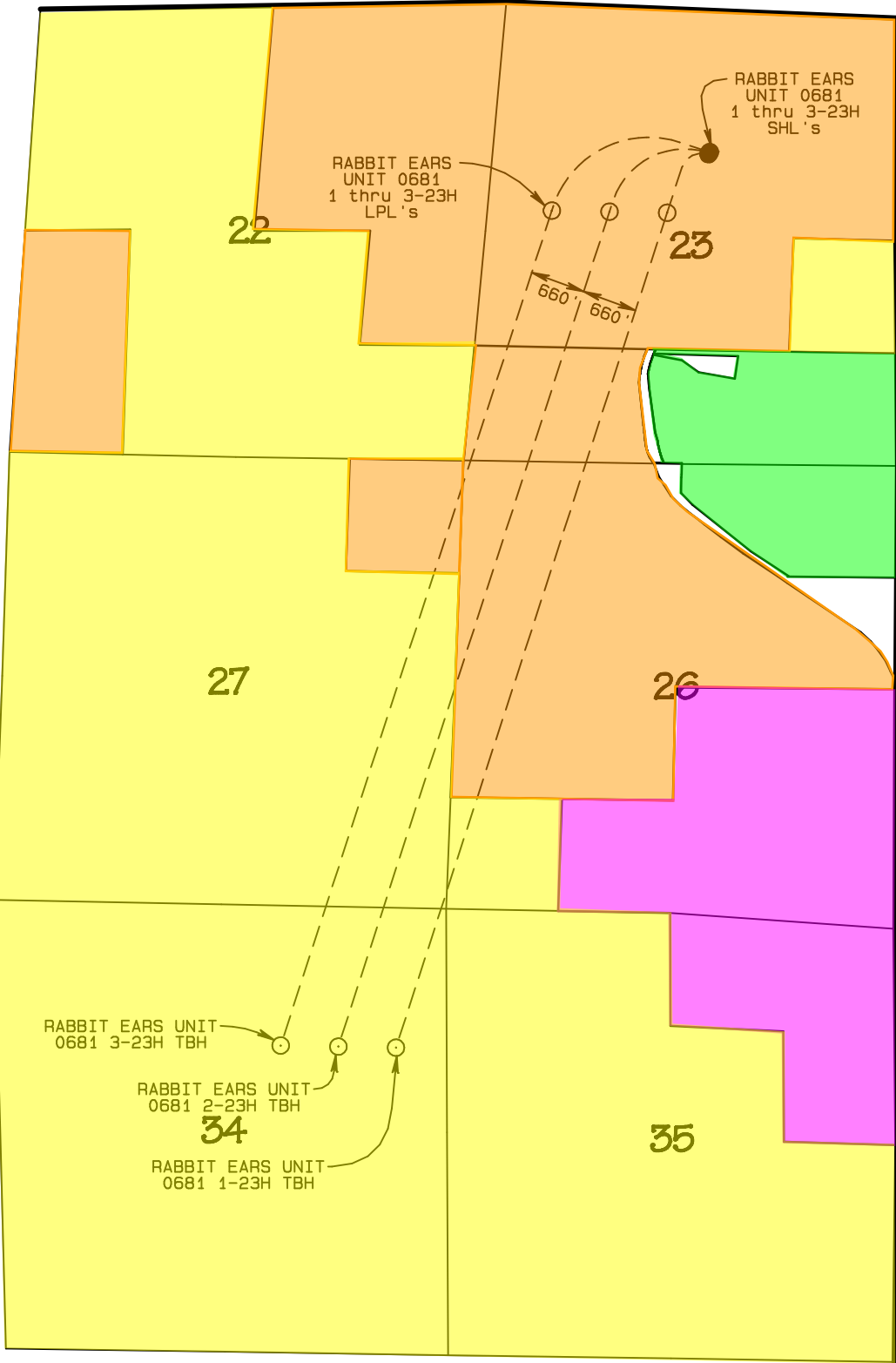
BASIS OF BEARINGS:
US STATE PLANE 1983
CO NORTH 0501 GRID

Lease Area Plan
RABBIT EARS 0680 S23 PAD
located as shown in Sections 23, 26,
27, 34 and 35, T6N, R81W, 6th P.M.,
Jackson County, Colorado.

LEGEND

PROPOSED WELL ●
PROPOSED BHL/LPL ○

Lease/Unit Boundary



- SHANNON MOSSMAN
- THE ARAPAHO RANCH CORP
- USA
- VAN VALKENBURG

RABBIT EARS UNIT

GRAPHIC SCALE 1"=2000'



2000 0 2000

NORTH PARK ENGINEERING & CONSULTING, INC.

P.O. BOX 395
WALDEN, CO 80480
(970) 723-3725

DATE OF FIELD WORK: MAR 20, 2016 DRAWING COMPLETION: JUN 8, 2016
SURVEYED BY: ADL DRAWN BY: TKH CHECKED BY: RRM