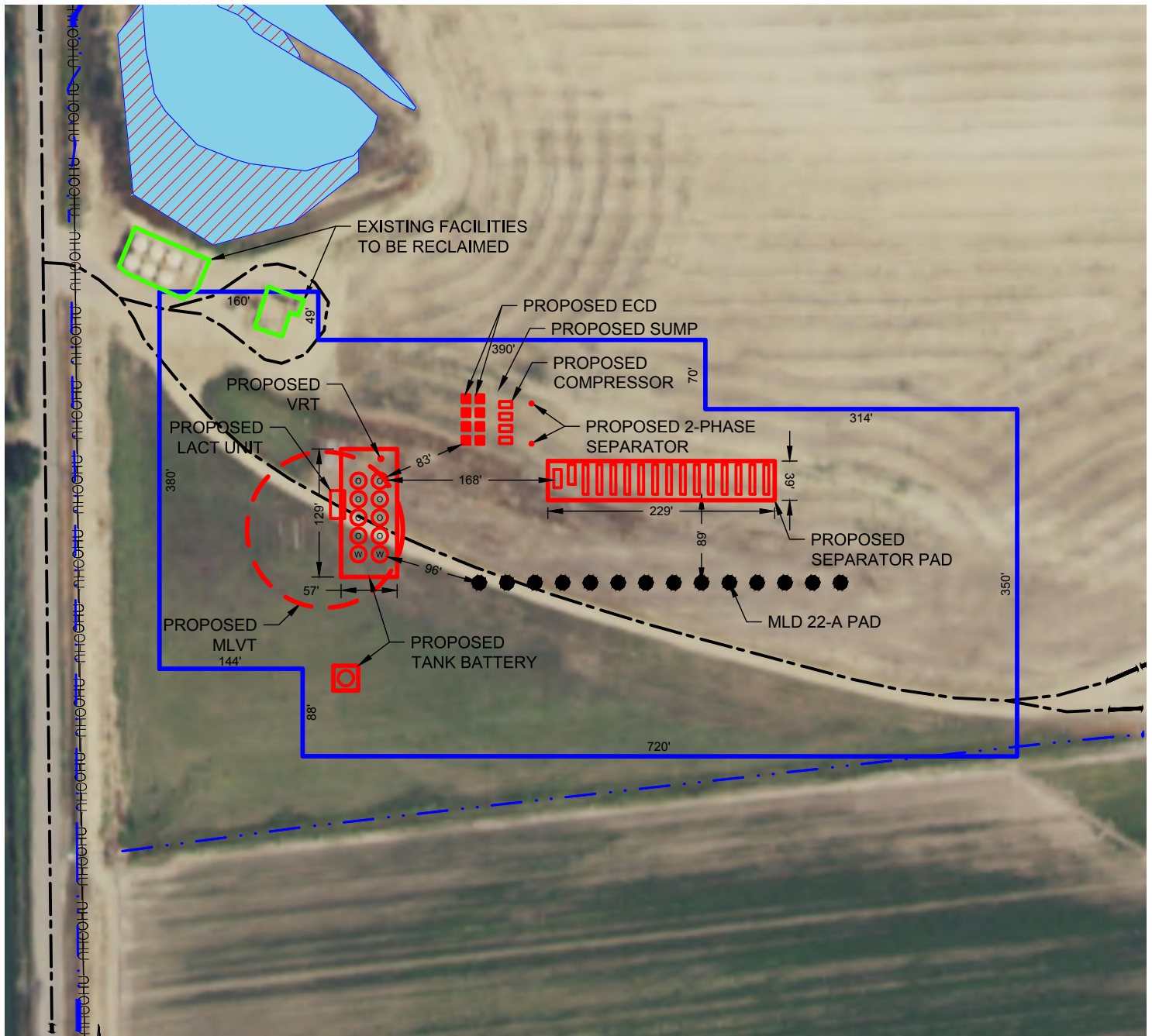


MLD 22-A PAD PRODUCTION FACILITY LAYOUT



LEGEND

- = PROPOSED WELL
- = PROPOSED DA
- = PROPOSED FACILITIES
- - - = PROPOSED MLVT
- = EXISTING FACILITIES
- = ROAD
- - - = DITCH
- OH— = OVERHEAD UTILITY
- = POND
- = WETLAND



DISCLAIMER:
THIS PLOT DOES NOT REPRESENT A MONUMENTED LAND SURVEY AND SHOULD NOT BE RELIED UPON TO DETERMINE BOUNDARY LINES, PROPERTY OWNERSHIP OR OTHER PROPERTY INTERESTS. PARCEL LINES, IF DEPICTED HAVE NOT BEEN FIELD VERIFIED AND MAY BE BASED UPON PUBLICLY AVAILABLE DATA THAT ALSO HAS NOT BEEN INDEPENDENTLY VERIFIED.

DATA SOURCE:
AERIAL IMAGE: NAIP 2015
NHD: USGS
WATER WELLS: COLORADO DWR

PUBLICLY AVAILABLE DATA SOURCES HAVE NOT BEEN INDEPENDENTLY VERIFIED BY PFS.

PREPARED BY:



FIELD DATE:
10-21-15

DRAWING DATE:
01-20-17

BY:
JLG

CHECKED BY:
JJA

SITE NAME:
MLD 22-A PAD

SURFACE LOCATION:

NW 1/4 NW 1/4 SEC. 22, T4N, R68W, 6TH P.M.
WELD COUNTY, COLORADO

PREPARED FOR:

