

EXTRACTION OIL & GAS

WELD COUNTY, COLORADO (NAD 83)

SEC. 22 T4N R68W 6th P.M.

MLD 14

ORIGINAL WELLBORE

29 July, 2014

Plan: PROPOSAL #1





Project: WELD COUNTY, COLORADO (NAD 83)
Site: SEC. 22 T4N R68W 6th P.M.
Well: MLD 14
Wellbore: ORIGINAL WELLBORE
Design: PROPOSAL #1

ANNOTATIONS

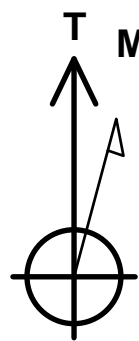
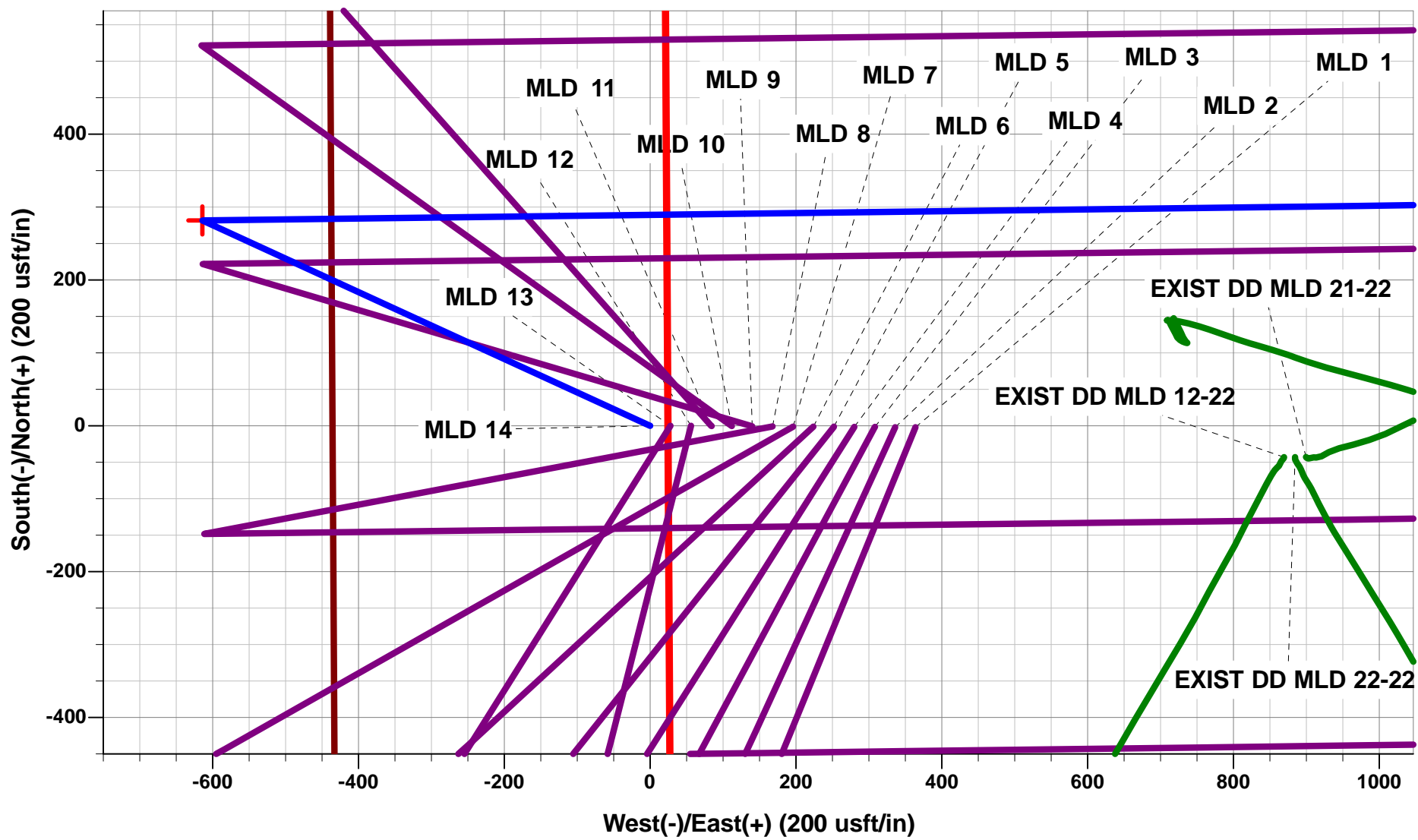
TVD	MD	Inc	Azi	+N/-S	+E/-W	VSect	Dep	Annotation
950.0	950.0	0.00	0.00	0.0	0.0	0.0	0.0	START NUDGE (3°/100ft)
1187.4	1188.1	7.14	294.64	6.2	-13.5	-12.9	14.8	EOB TO 7.14° INC
6342.0	6382.9	7.14	294.64	275.4	-600.5	-577.3	660.7	END OF TANGENT
6579.4	6620.9	0.00	0.00	281.6	-614.0	-590.3	675.5	EOD TO VERTICAL
6609.4	6650.9	0.00	0.00	281.6	-614.0	-590.3	675.5	KOP (9°/100ft BUR)
7246.0	7650.9	90.00	89.28	289.6	22.6	45.0	1312.1	7" ICP - MLD 14
7246.0	12054.8	90.00	89.29	344.7	4426.1	4439.5	5716.0	BHL - MLD 14

WELLBORE TARGET DETAILS (LAT/LONG)

Name	TVD	+N/-S	+E/-W	Latitude	Longitude
KOP - MLD 14	6609.4	281.6	-614.0	40.304746	-104.999471
7" ICP - MLD 14	7246.0	289.6	22.6	40.304768	-104.997189
BHL - MLD 14	7246.0	344.7	4426.1	40.304918	-104.981401

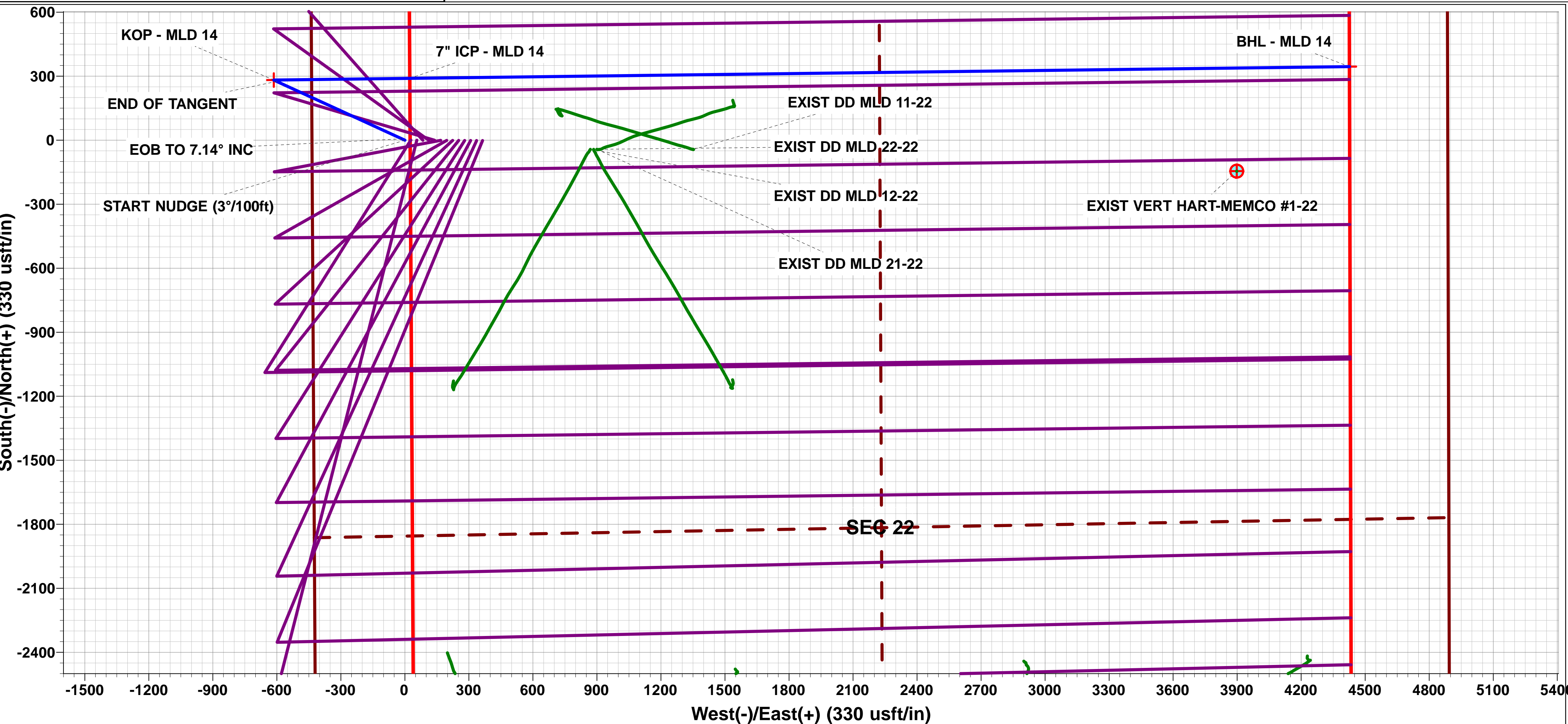
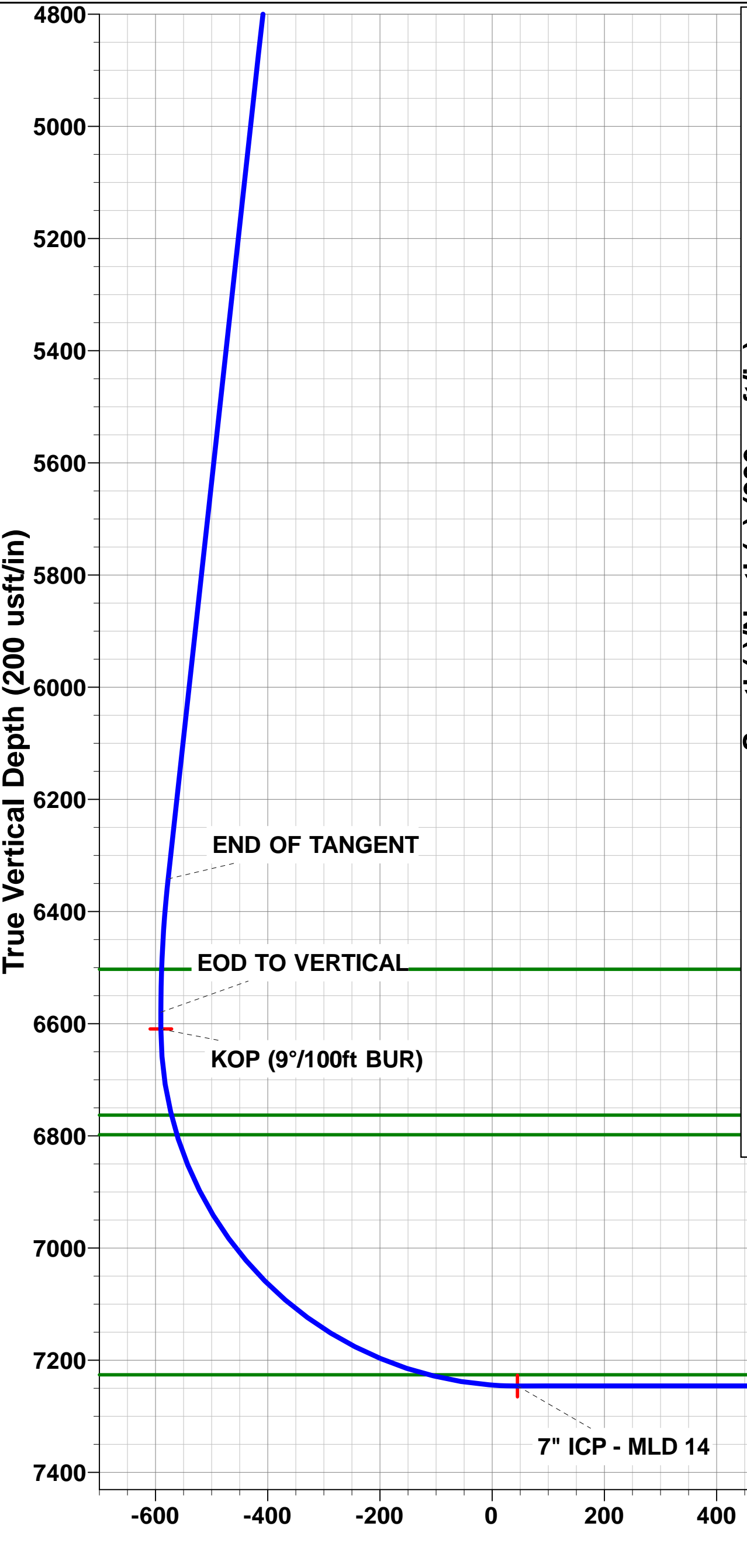
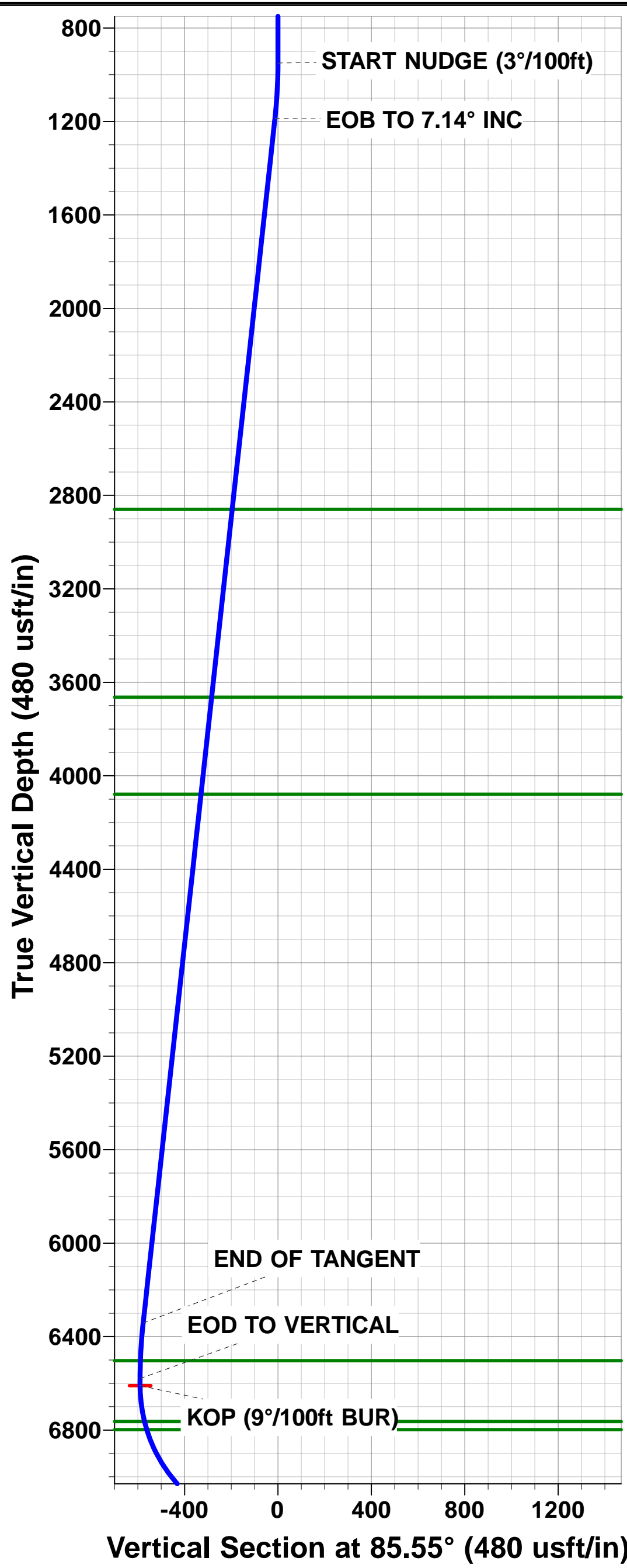
FORMATION TOP DETAILS

TVDPath	MDPath	Formation
2860.0	2873.7	PARKMAN
3664.0	3684.0	SUSSEX
4079.0	4102.2	SHANNON
6503.0	6544.5	NIOBRARA
6763.0	6806.1	FORT HAYS
6798.0	6842.4	CODELL
7226.0	7490.9	J SAND



Azimuths to True North
Magnetic North: 8.56°

Magnetic Field
Strength: 52727.2snT
Dip Angle: 66.83°
Date: 29/07/2014
Model: IGRF2010



SETBACK BOUNDARY FALLS 460ft FE/WL of Sec 22

BHL - MLD 14

Planning Report



Database:	EDM 5000.1 Single User Db	Local Co-ordinate Reference:	Well MLD 14
Company:	EXTRACTION OIL & GAS	TVD Reference:	KB-EST @ 4899.0usft (Original Well Elev)
Project:	WELD COUNTY, COLORADO (NAD 83)	MD Reference:	KB-EST @ 4899.0usft (Original Well Elev)
Site:	SEC. 22 T4N R68W 6th P.M.	North Reference:	True
Well:	MLD 14	Survey Calculation Method:	Minimum Curvature
Wellbore:	ORIGINAL WELLBORE		
Design:	PROPOSAL #1		

Project	WELD COUNTY, COLORADO (NAD 83)		
Map System:	US State Plane 1983	System Datum:	Mean Sea Level
Geo Datum:	North American Datum 1983		
Map Zone:	Colorado Northern Zone		Using geodetic scale factor

Site	SEC. 22 T4N R68W 6th P.M.		
Site Position:		Northing:	1,350,393.80 usft
From:	Lat/Long	Easting:	3,140,798.83 usft
Position Uncertainty:	0.0 usft	Slot Radius:	1.10000ft
		Latitude:	40.294131
		Longitude:	-104.995243
		Grid Convergence:	0.33 °

Well	MLD 14		
Well Position	+N-S	3,585.5 usft	Northing: 1,353,975.86 usfi
	+E-W	-565.4 usft	Easting: 3,140,213.09 usfi
Position Uncertainty		0.0 usft	Wellhead Elevation: usfi
			Latitude: 40.303973
			Longitude: -104.997270
			Ground Level: 4,875.0 usft

Wellbore	ORIGINAL WELLBORE				
Magnetics	Model Name	Sample Date	Declination (°)	Dip Angle (°)	Field Strength (nT)
	IGRF2010	29/07/2014	8.56	66.83	52,727

Design	PROPOSAL #1			
Audit Notes:				
Version:	Phase:	PROTOTYPE	Tie On Depth:	0.0
Vertical Section:	Depth From (TVD) (usft)	+N-S (usft)	+E-W (usft)	Direction (°)
	0.0	0.0	0.0	85.55

Plan Sections											
MD (usft)	Inc (°)	Azi (°)	Vertical Depth	SS (usft)	+N-S (usft)	+E-W (usft)	Dogleg Rate (°/100usf)	Build Rate (°/100usf)	Turn Rate (°/100usf)	TFO (°)	Target
0.0	0.00	0.00	0.0	-4,899.0	0.0	0.0	0.00	0.00	0.00	0.00	
950.0	0.00	0.00	950.0	-3,949.0	0.0	0.0	0.00	0.00	0.00	0.00	
1,188.1	7.14	294.64	1,187.4	-3,711.6	6.2	-13.5	3.00	3.00	0.00	294.64	
6,382.9	7.14	294.64	6,342.0	1,443.0	275.4	-600.5	0.00	0.00	0.00	0.00	
6,620.9	0.00	0.00	6,579.4	1,680.4	281.6	-614.0	3.00	-3.00	0.00	180.00	
6,650.9	0.00	0.00	6,609.4	1,710.4	281.6	-614.0	0.00	0.00	0.00	0.00	KOP - MLD 14
7,650.9	90.00	89.28	7,246.0	2,347.0	289.6	22.6	9.00	9.00	8.93	89.28	7" ICP - MLD 14
12,054.8	90.00	89.29	7,246.0	2,347.0	344.7	4,426.1	0.00	0.00	0.00	120.02	BHL - MLD 14

Planning Report



Database:	EDM 5000.1 Single User Db	Local Co-ordinate Reference:	Well MLD 14
Company:	EXTRACTION OIL & GAS	TVD Reference:	KB-EST @ 4899.0usft (Original Well Elev)
Project:	WELD COUNTY, COLORADO (NAD 83)	MD Reference:	KB-EST @ 4899.0usft (Original Well Elev)
Site:	SEC. 22 T4N R68W 6th P.M.	North Reference:	True
Well:	MLD 14	Survey Calculation Method:	Minimum Curvature
Wellbore:	ORIGINAL WELLBORE		
Design:	PROPOSAL #1		

Planned Survey

MD (usft)	Inc (°)	Azi (°)	TVD (usft)	SS (usft)	+N/-S (usft)	+E/-W (usft)	Vertical Section (usft)	Dogleg Rate (°/100usft)	Build Rate (°/100usft)	Turn Rate (°/100usft)
0.0	0.00	0.00	0.0	4,899.00	0.0	0.0	0.0	0.00	0.00	0.00
100.0	0.00	0.00	100.0	4,799.00	0.0	0.0	0.0	0.00	0.00	0.00
200.0	0.00	0.00	200.0	4,699.00	0.0	0.0	0.0	0.00	0.00	0.00
300.0	0.00	0.00	300.0	4,599.00	0.0	0.0	0.0	0.00	0.00	0.00
400.0	0.00	0.00	400.0	4,499.00	0.0	0.0	0.0	0.00	0.00	0.00
500.0	0.00	0.00	500.0	4,399.00	0.0	0.0	0.0	0.00	0.00	0.00
600.0	0.00	0.00	600.0	4,299.00	0.0	0.0	0.0	0.00	0.00	0.00
700.0	0.00	0.00	700.0	4,199.00	0.0	0.0	0.0	0.00	0.00	0.00
800.0	0.00	0.00	800.0	4,099.00	0.0	0.0	0.0	0.00	0.00	0.00
900.0	0.00	0.00	900.0	3,999.00	0.0	0.0	0.0	0.00	0.00	0.00
START NUDGE (3°/100ft)										
950.0	0.00	0.00	950.0	3,949.00	0.0	0.0	0.0	0.00	0.00	0.00
1,000.0	1.50	294.64	1,000.0	3,899.01	0.3	-0.6	-0.6	3.00	3.00	0.00
1,100.0	4.50	294.64	1,099.8	3,799.15	2.5	-5.4	-5.1	3.00	3.00	0.00
EOB TO 7.14° INC										
1,188.1	7.14	294.64	1,187.4	3,711.55	6.2	-13.5	-12.9	3.00	3.00	0.00
1,200.0	7.14	294.64	1,199.3	3,699.71	6.8	-14.8	-14.2	0.00	0.00	0.00
1,300.0	7.14	294.64	1,298.5	3,600.48	12.0	-26.1	-25.1	0.00	0.00	0.00
1,400.0	7.14	294.64	1,397.7	3,501.26	17.2	-37.4	-36.0	0.00	0.00	0.00
1,500.0	7.14	294.64	1,497.0	3,402.04	22.3	-48.7	-46.8	0.00	0.00	0.00
1,600.0	7.14	294.64	1,596.2	3,302.81	27.5	-60.0	-57.7	0.00	0.00	0.00
1,700.0	7.14	294.64	1,695.4	3,203.59	32.7	-71.3	-68.6	0.00	0.00	0.00
1,800.0	7.14	294.64	1,794.6	3,104.36	37.9	-82.6	-79.4	0.00	0.00	0.00
1,900.0	7.14	294.64	1,893.9	3,005.14	43.1	-93.9	-90.3	0.00	0.00	0.00
2,000.0	7.14	294.64	1,993.1	2,905.92	48.3	-105.2	-101.2	0.00	0.00	0.00
2,100.0	7.14	294.64	2,092.3	2,806.69	53.4	-116.5	-112.0	0.00	0.00	0.00
2,200.0	7.14	294.64	2,191.5	2,707.47	58.6	-127.8	-122.9	0.00	0.00	0.00
2,300.0	7.14	294.64	2,290.8	2,608.24	63.8	-139.1	-133.8	0.00	0.00	0.00
2,400.0	7.14	294.64	2,390.0	2,509.02	69.0	-150.4	-144.6	0.00	0.00	0.00
2,500.0	7.14	294.64	2,489.2	2,409.80	74.2	-161.7	-155.5	0.00	0.00	0.00
2,600.0	7.14	294.64	2,588.4	2,310.57	79.4	-173.0	-166.3	0.00	0.00	0.00
2,700.0	7.14	294.64	2,687.7	2,211.35	84.5	-184.3	-177.2	0.00	0.00	0.00
2,800.0	7.14	294.64	2,786.9	2,112.12	89.7	-195.6	-188.1	0.00	0.00	0.00
PARKMAN										
2,873.7	7.14	294.64	2,860.0	2,039.00	93.5	-204.0	-196.1	0.00	0.00	0.00
2,900.0	7.14	294.64	2,886.1	2,012.90	94.9	-206.9	-198.9	0.00	0.00	0.00
3,000.0	7.14	294.64	2,985.3	1,913.67	100.1	-218.2	-209.8	0.00	0.00	0.00
3,100.0	7.14	294.64	3,084.5	1,814.45	105.3	-229.5	-220.7	0.00	0.00	0.00
3,200.0	7.14	294.64	3,183.8	1,715.23	110.5	-240.8	-231.5	0.00	0.00	0.00
3,300.0	7.14	294.64	3,283.0	1,616.00	115.6	-252.1	-242.4	0.00	0.00	0.00
3,400.0	7.14	294.64	3,382.2	1,516.78	120.8	-263.4	-253.3	0.00	0.00	0.00
3,500.0	7.14	294.64	3,481.4	1,417.55	126.0	-274.7	-264.1	0.00	0.00	0.00
3,600.0	7.14	294.64	3,580.7	1,318.33	131.2	-286.0	-275.0	0.00	0.00	0.00
SUSSEX										
3,684.0	7.14	294.64	3,664.0	1,235.00	135.5	-295.5	-284.1	0.00	0.00	0.00
3,700.0	7.14	294.64	3,679.9	1,219.11	136.4	-297.3	-285.9	0.00	0.00	0.00
3,800.0	7.14	294.64	3,779.1	1,119.88	141.6	-308.6	-296.7	0.00	0.00	0.00
3,900.0	7.14	294.64	3,878.3	1,020.66	146.7	-319.9	-307.6	0.00	0.00	0.00
4,000.0	7.14	294.64	3,977.6	921.43	151.9	-331.2	-318.4	0.00	0.00	0.00
4,100.0	7.14	294.64	4,076.8	822.21	157.1	-342.5	-329.3	0.00	0.00	0.00
SHANNON										
4,102.2	7.14	294.64	4,079.0	820.00	157.2	-342.8	-329.6	0.00	0.00	0.00
4,200.0	7.14	294.64	4,176.0	722.99	162.3	-353.8	-340.2	0.00	0.00	0.00
4,300.0	7.14	294.64	4,275.2	623.76	167.5	-365.1	-351.0	0.00	0.00	0.00

Planning Report



Database:	EDM 5000.1 Single User Db	Local Co-ordinate Reference:	Well MLD 14
Company:	EXTRACTION OIL & GAS	TVD Reference:	KB-EST @ 4899.0usft (Original Well Elev)
Project:	WELD COUNTY, COLORADO (NAD 83)	MD Reference:	KB-EST @ 4899.0usft (Original Well Elev)
Site:	SEC. 22 T4N R68W 6th P.M.	North Reference:	True
Well:	MLD 14	Survey Calculation Method:	Minimum Curvature
Wellbore:	ORIGINAL WELLBORE		
Design:	PROPOSAL #1		

Planned Survey										
MD (usft)	Inc (°)	Azi (°)	TVD (usft)	SS (usft)	+N/-S (usft)	+E/-W (usft)	Vertical Section (usft)	Dogleg Rate (°/100usft)	Build Rate (°/100usft)	Turn Rate (°/100usft)
4,400.0	7.14	294.64	4,374.5	524.54	172.7	-376.4	-361.9	0.00	0.00	0.00
4,500.0	7.14	294.64	4,473.7	425.31	177.8	-387.7	-372.8	0.00	0.00	0.00
4,600.0	7.14	294.64	4,572.9	326.09	183.0	-399.0	-383.6	0.00	0.00	0.00
4,700.0	7.14	294.64	4,672.1	226.86	188.2	-410.4	-394.5	0.00	0.00	0.00
4,800.0	7.14	294.64	4,771.4	127.64	193.4	-421.7	-405.4	0.00	0.00	0.00
4,900.0	7.14	294.64	4,870.6	28.42	198.6	-433.0	-416.2	0.00	0.00	0.00
5,000.0	7.14	294.64	4,969.8	-70.81	203.7	-444.3	-427.1	0.00	0.00	0.00
5,100.0	7.14	294.64	5,069.0	-170.03	208.9	-455.6	-438.0	0.00	0.00	0.00
5,200.0	7.14	294.64	5,168.3	-269.26	214.1	-466.9	-448.8	0.00	0.00	0.00
5,300.0	7.14	294.64	5,267.5	-368.48	219.3	-478.2	-459.7	0.00	0.00	0.00
5,400.0	7.14	294.64	5,366.7	-467.70	224.5	-489.5	-470.6	0.00	0.00	0.00
5,500.0	7.14	294.64	5,465.9	-566.93	229.7	-500.8	-481.4	0.00	0.00	0.00
5,600.0	7.14	294.64	5,565.2	-666.15	234.8	-512.1	-492.3	0.00	0.00	0.00
5,700.0	7.14	294.64	5,664.4	-765.38	240.0	-523.4	-503.1	0.00	0.00	0.00
5,800.0	7.14	294.64	5,763.6	-864.60	245.2	-534.7	-514.0	0.00	0.00	0.00
5,900.0	7.14	294.64	5,862.8	-963.82	250.4	-546.0	-524.9	0.00	0.00	0.00
6,000.0	7.14	294.64	5,962.0	-1,063.05	255.6	-557.3	-535.7	0.00	0.00	0.00
6,100.0	7.14	294.64	6,061.3	-1,162.27	260.8	-568.6	-546.6	0.00	0.00	0.00
6,200.0	7.14	294.64	6,160.5	-1,261.50	265.9	-579.9	-557.5	0.00	0.00	0.00
6,300.0	7.14	294.64	6,259.7	-1,360.72	271.1	-591.2	-568.3	0.00	0.00	0.00
END OF TANGENT										
6,382.9	7.14	294.64	6,342.0	-1,442.95	275.4	-600.5	-577.3	0.00	0.00	0.00
6,400.0	6.63	294.64	6,359.0	-1,459.95	276.3	-602.4	-579.1	3.00	-3.00	0.00
6,500.0	3.63	294.64	6,458.5	-1,559.54	280.0	-610.5	-586.9	3.00	-3.00	0.00
NIORARA										
6,544.5	2.29	294.64	6,503.0	-1,604.00	281.0	-612.6	-588.9	3.00	-3.00	0.00
6,600.0	0.63	294.64	6,558.5	-1,659.46	281.6	-613.9	-590.2	3.00	-3.00	0.00
EOD TO VERTICAL										
6,620.9	0.00	0.00	6,579.4	-1,680.40	281.6	-614.0	-590.3	3.00	-3.00	0.00
KOP (9°/100ft BUR)										
6,650.9	0.00	0.00	6,609.4	-1,710.40	281.6	-614.0	-590.3	0.00	0.00	0.00
6,700.0	4.42	89.28	6,658.4	-1,759.41	281.6	-612.1	-588.4	9.00	9.00	0.00
6,800.0	13.42	89.28	6,757.1	-1,858.10	281.8	-596.6	-572.9	9.00	9.00	0.00
FORT HAYS										
6,806.1	13.96	89.28	6,763.0	-1,864.00	281.8	-595.2	-571.5	9.00	9.00	0.00
CODELL										
6,842.4	17.23	89.28	6,798.0	-1,899.00	282.0	-585.4	-561.8	9.00	9.00	0.00
6,900.0	22.42	89.28	6,852.2	-1,953.16	282.2	-565.9	-542.3	9.00	9.00	0.00
7,000.0	31.42	89.28	6,941.2	-2,042.23	282.8	-520.7	-497.2	9.00	9.00	0.00
7,100.0	40.42	89.28	7,022.1	-2,123.14	283.5	-462.1	-438.7	9.00	9.00	0.00
7,200.0	49.42	89.28	7,092.9	-2,193.88	284.4	-391.6	-368.3	9.00	9.00	0.00
7,300.0	58.42	89.28	7,151.7	-2,252.71	285.4	-310.8	-287.7	9.00	9.00	0.00
7,400.0	67.42	89.28	7,197.2	-2,298.19	286.5	-221.9	-199.0	9.00	9.00	0.00
J SAND										
7,490.9	75.60	89.28	7,226.0	-2,327.00	287.6	-135.8	-113.0	9.00	9.00	0.00
7,500.0	76.42	89.28	7,228.2	-2,329.20	287.7	-126.9	-104.2	9.00	9.00	0.00
7,600.0	85.42	89.28	7,244.0	-2,344.97	289.0	-28.3	-5.8	9.00	9.00	0.00
7" ICP - MLD 14										
7,650.9	90.00	89.28	7,246.0	-2,347.00	289.6	22.6	45.0	9.00	9.00	0.00
7,700.0	90.00	89.28	7,246.0	-2,347.00	290.2	71.6	94.0	0.00	0.00	0.00
7,800.0	90.00	89.28	7,246.0	-2,346.99	291.5	171.6	193.7	0.00	0.00	0.00
7,900.0	90.00	89.28	7,246.0	-2,346.98	292.8	271.6	293.5	0.00	0.00	0.00
8,000.0	90.00	89.28	7,246.0	-2,346.98	294.0	371.6	393.3	0.00	0.00	0.00

Database:	EDM 5000.1 Single User Db	Local Co-ordinate Reference:	Well MLD 14
Company:	EXTRACTION OIL & GAS	TVD Reference:	KB-EST @ 4899.0usft (Original Well Elev)
Project:	WELD COUNTY, COLORADO (NAD 83)	MD Reference:	KB-EST @ 4899.0usft (Original Well Elev)
Site:	SEC. 22 T4N R68W 6th P.M.	North Reference:	True
Well:	MLD 14	Survey Calculation Method:	Minimum Curvature
Wellbore:	ORIGINAL WELLBORE		
Design:	PROPOSAL #1		

Planned Survey

MD (usft)	Inc (°)	Azi (°)	TVD (usft)	SS (usft)	+N/-S (usft)	+E/-W (usft)	Vertical Section (usft)	Dogleg Rate (°/100usft)	Build Rate (°/100usft)	Turn Rate (°/100usft)
8,100.0	90.00	89.28	7,246.0	-2,346.97	295.3	471.6	493.1	0.00	0.00	0.00
8,200.0	90.00	89.28	7,246.0	-2,346.97	296.5	571.6	592.9	0.00	0.00	0.00
8,300.0	90.00	89.28	7,246.0	-2,346.96	297.8	671.6	692.7	0.00	0.00	0.00
8,400.0	90.00	89.28	7,246.0	-2,346.96	299.1	771.6	792.5	0.00	0.00	0.00
8,500.0	90.00	89.28	7,246.0	-2,346.95	300.3	871.6	892.3	0.00	0.00	0.00
8,600.0	90.00	89.28	7,246.0	-2,346.95	301.6	971.6	992.0	0.00	0.00	0.00
8,700.0	90.00	89.28	7,245.9	-2,346.95	302.8	1,071.6	1,091.8	0.00	0.00	0.00
8,800.0	90.00	89.28	7,245.9	-2,346.94	304.1	1,171.6	1,191.6	0.00	0.00	0.00
8,900.0	90.00	89.28	7,245.9	-2,346.94	305.3	1,271.5	1,291.4	0.00	0.00	0.00
9,000.0	90.00	89.28	7,245.9	-2,346.94	306.6	1,371.5	1,391.2	0.00	0.00	0.00
9,100.0	90.00	89.28	7,245.9	-2,346.93	307.9	1,471.5	1,491.0	0.00	0.00	0.00
9,200.0	90.00	89.28	7,245.9	-2,346.93	309.1	1,571.5	1,590.8	0.00	0.00	0.00
9,300.0	90.00	89.28	7,245.9	-2,346.93	310.4	1,671.5	1,690.6	0.00	0.00	0.00
9,400.0	90.00	89.28	7,245.9	-2,346.93	311.6	1,771.5	1,790.4	0.00	0.00	0.00
9,500.0	90.00	89.28	7,245.9	-2,346.93	312.9	1,871.5	1,890.1	0.00	0.00	0.00
9,600.0	90.00	89.28	7,245.9	-2,346.93	314.1	1,971.5	1,989.9	0.00	0.00	0.00
9,700.0	90.00	89.28	7,245.9	-2,346.93	315.4	2,071.5	2,089.7	0.00	0.00	0.00
9,800.0	90.00	89.28	7,245.9	-2,346.93	316.6	2,171.5	2,189.5	0.00	0.00	0.00
9,900.0	90.00	89.28	7,245.9	-2,346.93	317.9	2,271.5	2,289.3	0.00	0.00	0.00
10,000.0	90.00	89.28	7,245.9	-2,346.93	319.1	2,371.5	2,389.1	0.00	0.00	0.00
10,100.0	90.00	89.28	7,245.9	-2,346.93	320.4	2,471.4	2,488.9	0.00	0.00	0.00
10,200.0	90.00	89.28	7,245.9	-2,346.93	321.6	2,571.4	2,588.7	0.00	0.00	0.00
10,300.0	90.00	89.29	7,245.9	-2,346.93	322.9	2,671.4	2,688.4	0.00	0.00	0.00
10,400.0	90.00	89.29	7,245.9	-2,346.93	324.1	2,771.4	2,788.2	0.00	0.00	0.00
10,500.0	90.00	89.29	7,245.9	-2,346.93	325.4	2,871.4	2,888.0	0.00	0.00	0.00
10,600.0	90.00	89.29	7,245.9	-2,346.93	326.6	2,971.4	2,987.8	0.00	0.00	0.00
10,700.0	90.00	89.29	7,245.9	-2,346.94	327.8	3,071.4	3,087.6	0.00	0.00	0.00
10,800.0	90.00	89.29	7,245.9	-2,346.94	329.1	3,171.4	3,187.4	0.00	0.00	0.00
10,900.0	90.00	89.29	7,245.9	-2,346.94	330.3	3,271.4	3,287.2	0.00	0.00	0.00
11,000.0	90.00	89.29	7,245.9	-2,346.95	331.6	3,371.4	3,386.9	0.00	0.00	0.00
11,100.0	90.00	89.29	7,245.9	-2,346.95	332.8	3,471.4	3,486.7	0.00	0.00	0.00
11,200.0	90.00	89.29	7,246.0	-2,346.95	334.1	3,571.4	3,586.5	0.00	0.00	0.00
11,300.0	90.00	89.29	7,246.0	-2,346.96	335.3	3,671.4	3,686.3	0.00	0.00	0.00
11,400.0	90.00	89.29	7,246.0	-2,346.96	336.6	3,771.3	3,786.1	0.00	0.00	0.00
11,500.0	90.00	89.29	7,246.0	-2,346.97	337.8	3,871.3	3,885.9	0.00	0.00	0.00
11,600.0	90.00	89.29	7,246.0	-2,346.97	339.0	3,971.3	3,985.7	0.00	0.00	0.00
11,700.0	90.00	89.29	7,246.0	-2,346.98	340.3	4,071.3	4,085.5	0.00	0.00	0.00
11,800.0	90.00	89.29	7,246.0	-2,346.98	341.5	4,171.3	4,185.2	0.00	0.00	0.00
11,900.0	90.00	89.29	7,246.0	-2,346.99	342.8	4,271.3	4,285.0	0.00	0.00	0.00
12,000.0	90.00	89.29	7,246.0	-2,347.00	344.0	4,371.3	4,384.8	0.00	0.00	0.00
BHL - MLD 14										
12,054.8	90.00	89.29	7,246.0	-2,347.00	344.7	4,426.1	4,439.5	0.00	0.00	0.00

Database:	EDM 5000.1 Single User Db	Local Co-ordinate Reference:	Well MLD 14
Company:	EXTRACTION OIL & GAS	TVD Reference:	KB-EST @ 4899.0usft (Original Well Elev)
Project:	WELD COUNTY, COLORADO (NAD 83)	MD Reference:	KB-EST @ 4899.0usft (Original Well Elev)
Site:	SEC. 22 T4N R68W 6th P.M.	North Reference:	True
Well:	MLD 14	Survey Calculation Method:	Minimum Curvature
Wellbore:	ORIGINAL WELLBORE		
Design:	PROPOSAL #1		

Formations

MD (usft)	TVD (usft)	Name	Lithology	Dip (°)	Dip Direction (°)
2,873.7	2,860.0	PARKMAN		0.00	
3,684.0	3,664.0	SUSSEX		0.00	
4,102.2	4,079.0	SHANNON		0.00	
6,544.5	6,503.0	NIOBRARA		0.00	
6,806.1	6,763.0	FORT HAYS		0.00	
6,842.4	6,798.0	CODELL		0.00	
7,490.9	7,226.0	J SAND		0.00	

Plan Annotations

MD (usft)	TVD (usft)	Local Coordinates		Comment
		+N/-S (usft)	+E/-W (usft)	
950.0	950.0	0.0	0.0	START NUDGE (3°/100ft)
1,188.1	1,187.4	6.2	-13.5	EOB TO 7.14° INC
6,382.9	6,342.0	275.4	-600.5	END OF TANGENT
6,620.9	6,579.4	281.6	-614.0	EOD TO VERTICAL
6,650.9	6,609.4	281.6	-614.0	KOP (9°/100ft BUR)
7,650.9	7,246.0	289.6	22.6	7" ICP - MLD 14
12,054.8	7,246.0	344.7	4,426.1	BHL - MLD 14