

EXTRACTION OIL & GAS

WELD COUNTY, COLORADO (NAD 83)

SEC. 22 T4N R68W 6th P.M.

MLD 6

ORIGINAL WELLBORE

29 July, 2014

Plan: PROPOSAL #1





Project: WELD COUNTY, COLORADO (NAD 83)
Site: SEC. 22 T4N R68W 6th P.M.
Well: MLD 6
Wellbore: ORIGINAL WELLBORE
Design: PROPOSAL #1

ANNOTATIONS

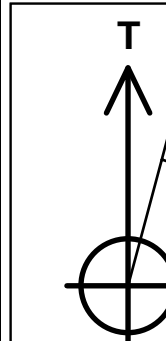
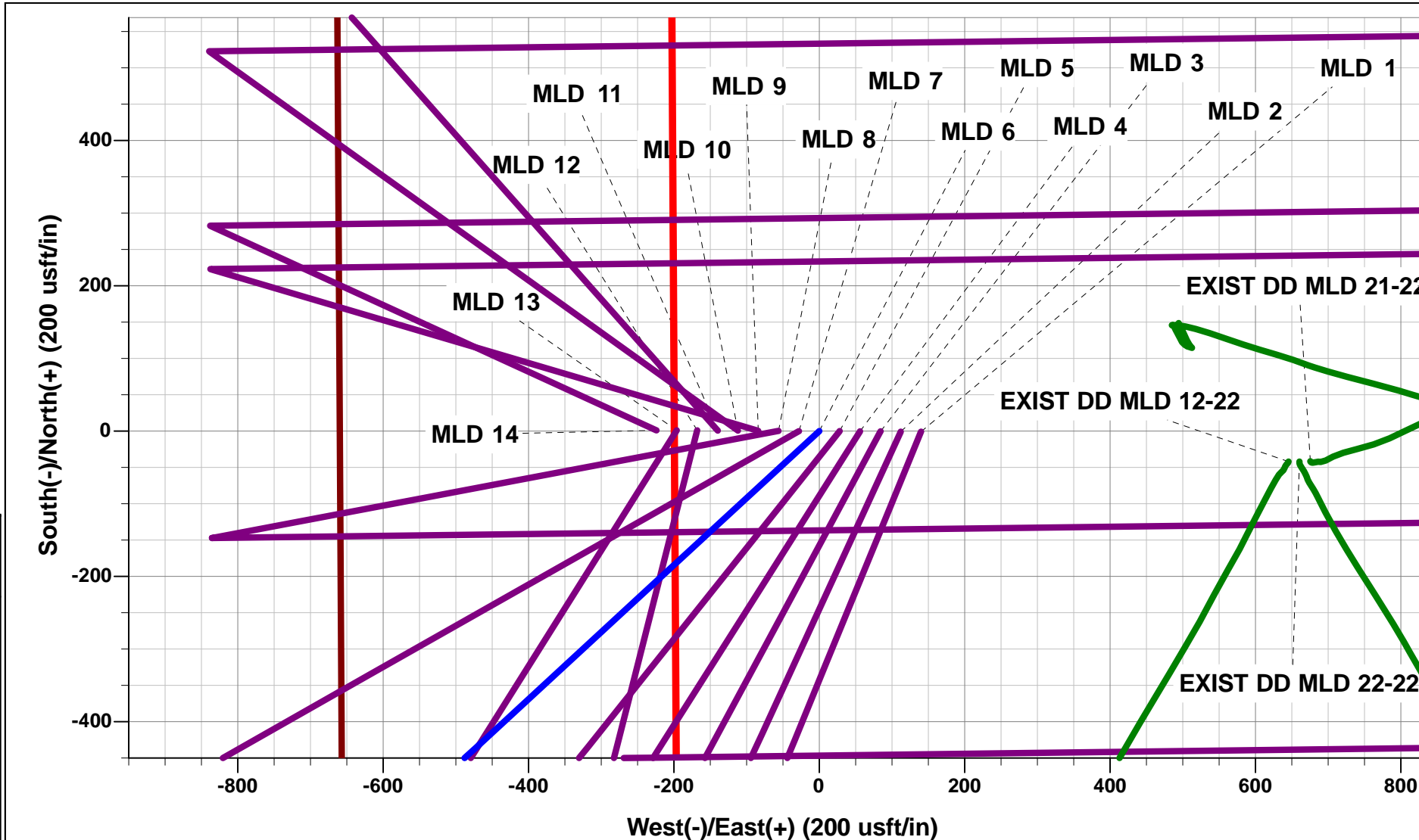
TVD	MD	Inc	Azi	+N/-S	+E/-W	Vsect	Dep	Annotation
1750.0	1750.0	0.00	0.00	0.0	0.0	0.0	0.0	START NUDGE (3°/100ft BUR)
2317.6	2326.3	17.29	227.31	-58.5	-63.4	-52.9	86.3	EOB TO 17.29° INC
5398.8	5553.3	17.29	227.31	-708.7	-768.4	-640.8	1045.3	END OF TANGENT
5966.4	6129.6	0.00	0.00	-767.2	-831.8	-693.7	1131.6	EOD TO VERTICAL
5996.4	6159.6	0.00	0.00	-767.2	-831.8	-693.7	1131.6	KOP (9°/100ft BUR)
6633.0	7159.6	90.00	89.28	-759.2	-195.2	-67.2	1768.2	7" ICP - MLD 6
6633.0	11560.0	90.00	89.29	-704.2	4204.8	4263.4	6168.6	BHL - MLD 6

WELLBORE TARGET DETAILS (LAT/LONG)

Name	TVD	+N/-S	+E/-W	Latitude	Longitude
KOP - MLD 6	5996.4	-767.2	-831.8	40.301864	-104.999449
7" ICP - MLD 6	6633.0	-759.2	-195.2	40.301886	-104.997167
BHL - MLD 6	6633.0	-704.2	4204.8	40.302036	-104.981392

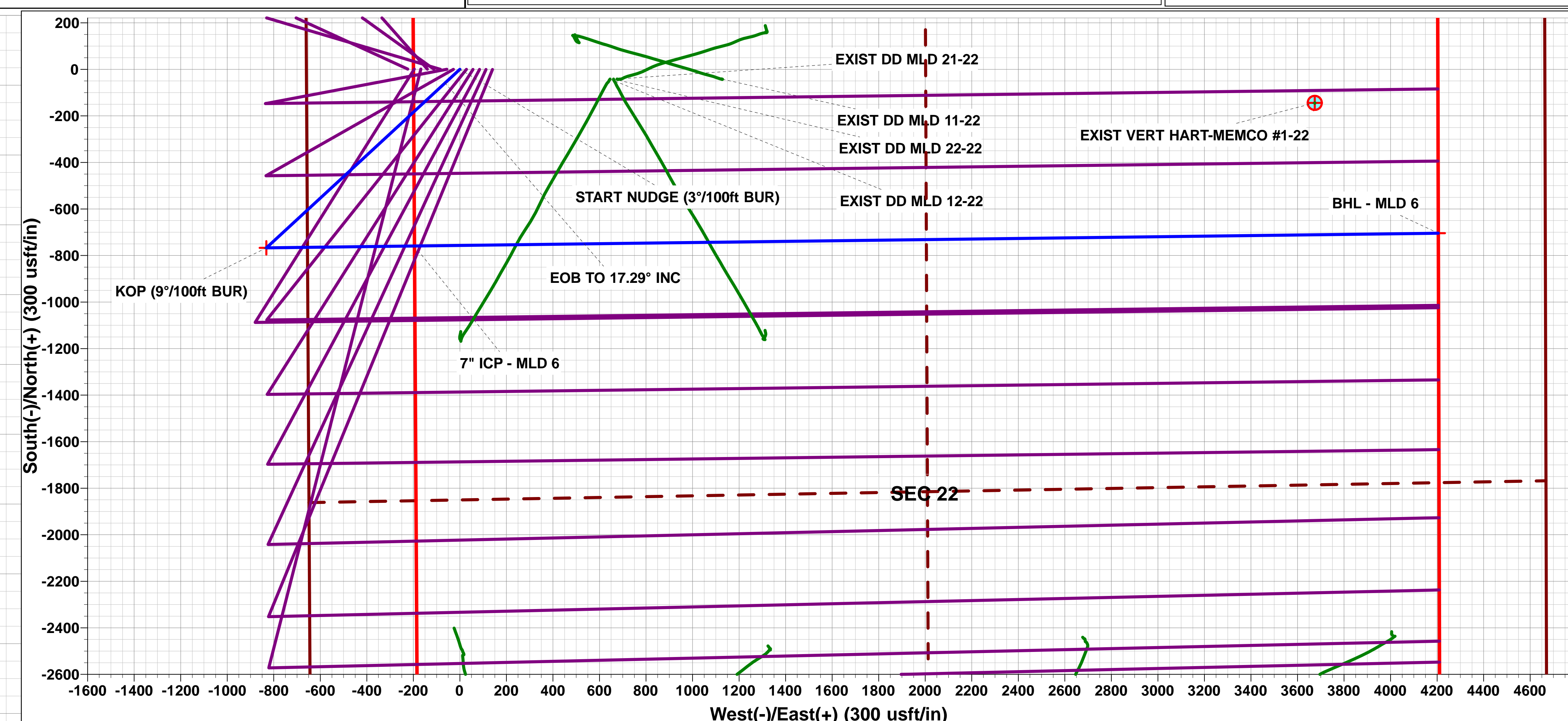
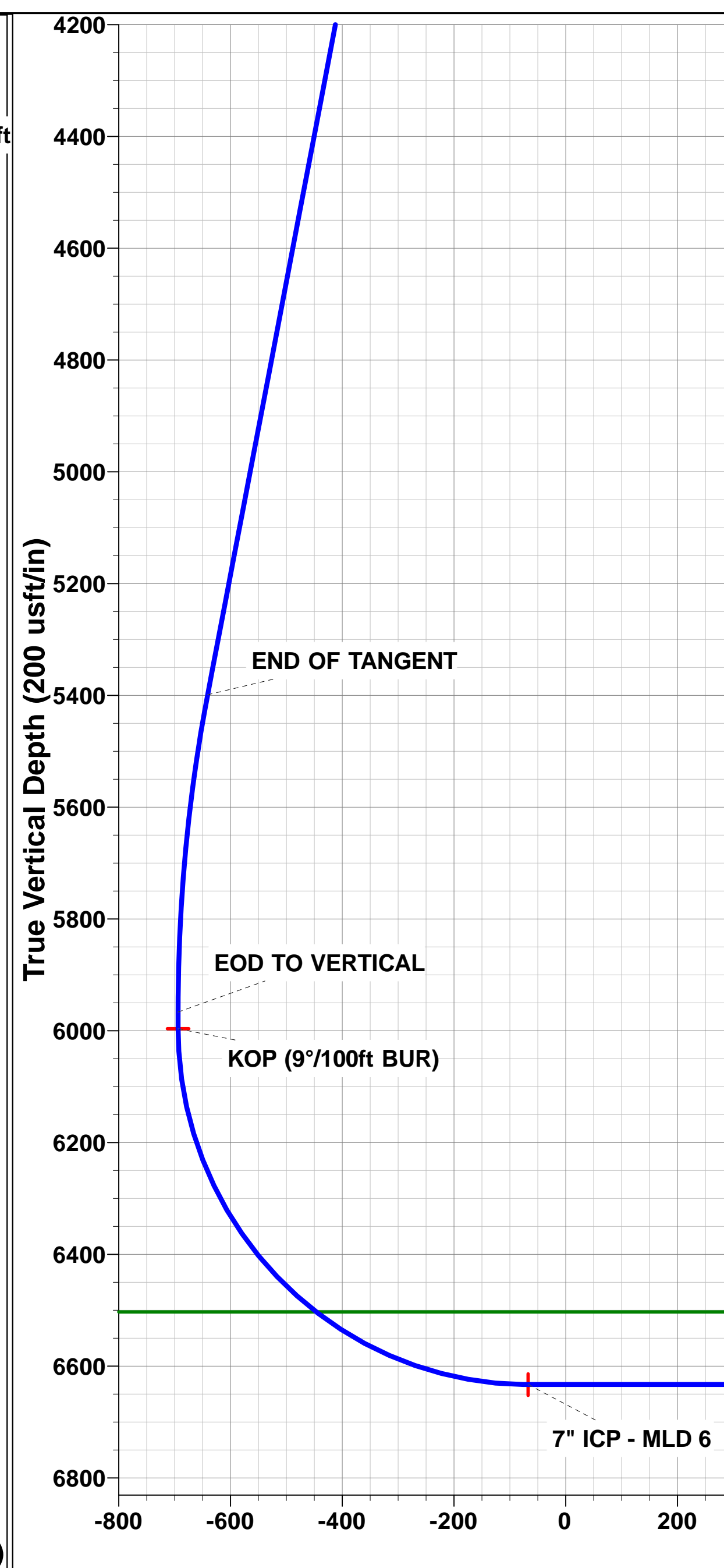
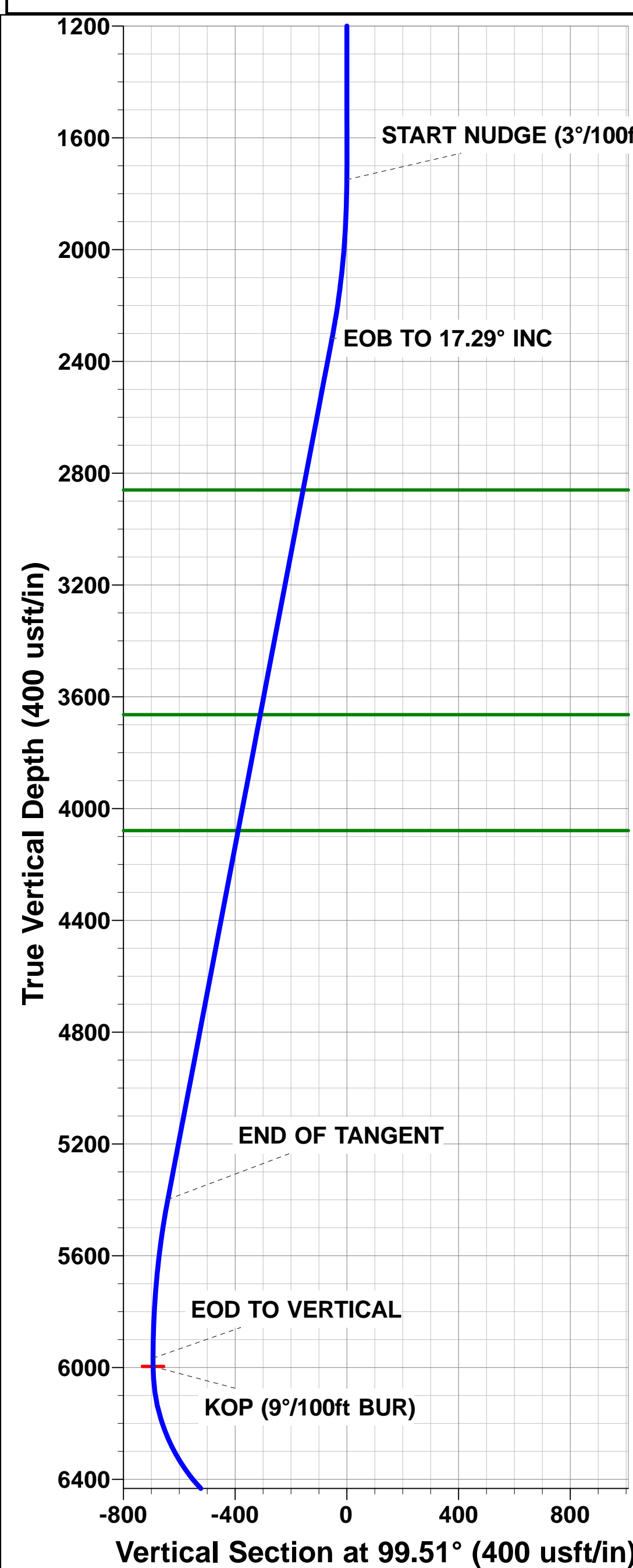
FORMATION TOP DETAILS

TVDPath	MDPath	Formation
2860.0	2894.4	PARKMAN
3664.0	3736.4	SUSSEX
4079.0	4171.0	SHANNON
6503.0	6745.5	NIOBRARA



Azimuths to True North
Magnetic North: 8.56°

Magnetic Field
Strength: 52727.3snT
Dip Angle: 66.83°
Date: 29/07/2014
Model: IGRF2010



SETBACK BOUNDARY FALLS 460ft FE/WL of Sec 22

BHL - MLD 6

Planning Report



Database:	EDM 5000.1 Single User Db	Local Co-ordinate Reference:	Well MLD 6
Company:	EXTRACTION OIL & GAS	TVD Reference:	KB-EST @ 4900.0usft (Original Well Elev)
Project:	WELD COUNTY, COLORADO (NAD 83)	MD Reference:	KB-EST @ 4900.0usft (Original Well Elev)
Site:	SEC. 22 T4N R68W 6th P.M.	North Reference:	True
Well:	MLD 6	Survey Calculation Method:	Minimum Curvature
Wellbore:	ORIGINAL WELLBORE		
Design:	PROPOSAL #1		

Project	WELD COUNTY, COLORADO (NAD 83)		
Map System:	US State Plane 1983	System Datum:	Mean Sea Level
Geo Datum:	North American Datum 1983		
Map Zone:	Colorado Northern Zone		Using geodetic scale factor

Site	SEC. 22 T4N R68W 6th P.M.		
Site Position:		Northing:	1,350,393.80 usft
From:	Lat/Long	Easting:	3,140,798.83 usft
Position Uncertainty:	0.0 usft	Slot Radius:	1.10000 ft
		Latitude:	40.294131
		Longitude:	-104.995243
		Grid Convergence:	0.33 °

Well	MLD 6		
Well Position	+N-S	3,584.4 usft	Northing: 1,353,976.04 usfi
	+E-W	-341.4 usft	Easting: 3,140,437.05 usfi
Position Uncertainty	0.0 usft	Wellhead Elevation:	usfi
		Latitude:	40.303970
		Longitude:	-104.996467
		Ground Level:	4,876.0 usft

Wellbore	ORIGINAL WELLBORE				
Magnetics	Model Name	Sample Date	Declination (°)	Dip Angle (°)	Field Strength (nT)
	IGRF2010	29/07/2014	8.56	66.83	52,727

Design	PROPOSAL #1			
Audit Notes:				
Version:	Phase:	PROTOTYPE	Tie On Depth:	0.0
Vertical Section:	Depth From (TVD) (usft)	+N-S (usft)	+E-W (usft)	Direction (°)
	0.0	0.0	0.0	99.51

Plan Sections											
MD (usft)	Inc (°)	Azi (°)	Vertical Depth	SS (usft)	+N-S (usft)	+E-W (usft)	Dogleg Rate (°/100usf)	Build Rate (°/100usf)	Turn Rate (°/100usf)	TFO (°)	Target
0.0	0.00	0.00	0.0	-4,900.0	0.0	0.0	0.00	0.00	0.00	0.00	
1,750.0	0.00	0.00	1,750.0	-3,150.0	0.0	0.0	0.00	0.00	0.00	0.00	
2,326.3	17.29	227.31	2,317.6	-2,582.4	-58.5	-63.4	3.00	3.00	0.00	227.31	
5,553.3	17.29	227.31	5,398.8	498.8	-708.7	-768.4	0.00	0.00	0.00	0.00	
6,129.6	0.00	0.00	5,966.4	1,066.4	-767.2	-831.8	3.00	-3.00	0.00	180.00	
6,159.6	0.00	0.00	5,996.4	1,096.4	-767.2	-831.8	0.00	0.00	0.00	0.00	KOP - MLD 6
7,159.6	90.00	89.28	6,633.0	1,733.0	-759.2	-195.2	9.00	9.00	8.93	89.28	7" ICP - MLD 6
11,560.0	90.00	89.29	6,633.0	1,733.0	-704.2	4,204.8	0.00	0.00	0.00	93.59	BHL - MLD 6

Planning Report



Database:	EDM 5000.1 Single User Db	Local Co-ordinate Reference:	Well MLD 6
Company:	EXTRACTION OIL & GAS	TVD Reference:	KB-EST @ 4900.0usft (Original Well Elev)
Project:	WELD COUNTY, COLORADO (NAD 83)	MD Reference:	KB-EST @ 4900.0usft (Original Well Elev)
Site:	SEC. 22 T4N R68W 6th P.M.	North Reference:	True
Well:	MLD 6	Survey Calculation Method:	Minimum Curvature
Wellbore:	ORIGINAL WELLBORE		
Design:	PROPOSAL #1		

Planned Survey

MD (usft)	Inc (°)	Azi (°)	TVD (usft)	SS (usft)	+N/-S (usft)	+E/-W (usft)	Vertical Section (usft)	Dogleg Rate (°/100usft)	Build Rate (°/100usft)	Turn Rate (°/100usft)
0.0	0.00	0.00	0.0	4,900.00	0.0	0.0	0.0	0.00	0.00	0.00
100.0	0.00	0.00	100.0	4,800.00	0.0	0.0	0.0	0.00	0.00	0.00
200.0	0.00	0.00	200.0	4,700.00	0.0	0.0	0.0	0.00	0.00	0.00
300.0	0.00	0.00	300.0	4,600.00	0.0	0.0	0.0	0.00	0.00	0.00
400.0	0.00	0.00	400.0	4,500.00	0.0	0.0	0.0	0.00	0.00	0.00
500.0	0.00	0.00	500.0	4,400.00	0.0	0.0	0.0	0.00	0.00	0.00
600.0	0.00	0.00	600.0	4,300.00	0.0	0.0	0.0	0.00	0.00	0.00
700.0	0.00	0.00	700.0	4,200.00	0.0	0.0	0.0	0.00	0.00	0.00
800.0	0.00	0.00	800.0	4,100.00	0.0	0.0	0.0	0.00	0.00	0.00
900.0	0.00	0.00	900.0	4,000.00	0.0	0.0	0.0	0.00	0.00	0.00
1,000.0	0.00	0.00	1,000.0	3,900.00	0.0	0.0	0.0	0.00	0.00	0.00
1,100.0	0.00	0.00	1,100.0	3,800.00	0.0	0.0	0.0	0.00	0.00	0.00
1,200.0	0.00	0.00	1,200.0	3,700.00	0.0	0.0	0.0	0.00	0.00	0.00
1,300.0	0.00	0.00	1,300.0	3,600.00	0.0	0.0	0.0	0.00	0.00	0.00
1,400.0	0.00	0.00	1,400.0	3,500.00	0.0	0.0	0.0	0.00	0.00	0.00
1,500.0	0.00	0.00	1,500.0	3,400.00	0.0	0.0	0.0	0.00	0.00	0.00
1,600.0	0.00	0.00	1,600.0	3,300.00	0.0	0.0	0.0	0.00	0.00	0.00
1,700.0	0.00	0.00	1,700.0	3,200.00	0.0	0.0	0.0	0.00	0.00	0.00
START NUDGE (3°/100ft BUR)										
1,750.0	0.00	0.00	1,750.0	3,150.00	0.0	0.0	0.0	0.00	0.00	0.00
1,800.0	1.50	227.31	1,800.0	3,100.01	-0.4	-0.5	-0.4	3.00	3.00	0.00
1,900.0	4.50	227.31	1,899.8	3,000.15	-4.0	-4.3	-3.6	3.00	3.00	0.00
2,000.0	7.50	227.31	1,999.3	2,900.71	-11.1	-12.0	-10.0	3.00	3.00	0.00
2,100.0	10.50	227.31	2,098.0	2,801.96	-21.7	-23.5	-19.6	3.00	3.00	0.00
2,200.0	13.50	227.31	2,195.8	2,704.15	-35.8	-38.8	-32.3	3.00	3.00	0.00
2,300.0	16.50	227.31	2,292.4	2,607.57	-53.3	-57.8	-48.2	3.00	3.00	0.00
EOB TO 17.29° INC										
2,326.3	17.29	227.31	2,317.6	2,582.43	-58.5	-63.4	-52.9	3.00	3.00	0.00
2,400.0	17.29	227.31	2,388.0	2,512.04	-73.4	-79.5	-66.3	0.00	0.00	0.00
2,500.0	17.29	227.31	2,483.4	2,416.55	-93.5	-101.4	-84.5	0.00	0.00	0.00
2,600.0	17.29	227.31	2,578.9	2,321.07	-113.7	-123.2	-102.8	0.00	0.00	0.00
2,700.0	17.29	227.31	2,674.4	2,225.59	-133.8	-145.1	-121.0	0.00	0.00	0.00
2,800.0	17.29	227.31	2,769.9	2,130.11	-153.9	-166.9	-139.2	0.00	0.00	0.00
PARKMAN										
2,894.4	17.29	227.31	2,860.0	2,040.00	-173.0	-187.5	-156.4	0.00	0.00	0.00
2,900.0	17.29	227.31	2,865.4	2,034.62	-174.1	-188.8	-157.4	0.00	0.00	0.00
3,000.0	17.29	227.31	2,960.9	1,939.14	-194.2	-210.6	-175.6	0.00	0.00	0.00
3,100.0	17.29	227.31	3,056.3	1,843.66	-214.4	-232.4	-193.8	0.00	0.00	0.00
3,200.0	17.29	227.31	3,151.8	1,748.18	-234.5	-254.3	-212.1	0.00	0.00	0.00
3,300.0	17.29	227.31	3,247.3	1,652.70	-254.7	-276.1	-230.3	0.00	0.00	0.00
3,400.0	17.29	227.31	3,342.8	1,557.21	-274.8	-298.0	-248.5	0.00	0.00	0.00
3,500.0	17.29	227.31	3,438.3	1,461.73	-295.0	-319.8	-266.7	0.00	0.00	0.00
3,600.0	17.29	227.31	3,533.7	1,366.25	-315.1	-341.7	-284.9	0.00	0.00	0.00
3,700.0	17.29	227.31	3,629.2	1,270.77	-335.3	-363.5	-303.1	0.00	0.00	0.00
SUSSEX										
3,736.4	17.29	227.31	3,664.0	1,236.00	-342.6	-371.5	-309.8	0.00	0.00	0.00
3,800.0	17.29	227.31	3,724.7	1,175.29	-355.4	-385.4	-321.4	0.00	0.00	0.00
3,900.0	17.29	227.31	3,820.2	1,079.80	-375.6	-407.2	-339.6	0.00	0.00	0.00
4,000.0	17.29	227.31	3,915.7	984.32	-395.7	-429.1	-357.8	0.00	0.00	0.00
4,100.0	17.29	227.31	4,011.2	888.84	-415.9	-450.9	-376.0	0.00	0.00	0.00
SHANNON										
4,171.0	17.29	227.31	4,079.0	821.00	-430.2	-466.4	-389.0	0.00	0.00	0.00
4,200.0	17.29	227.31	4,106.6	793.36	-436.0	-472.7	-394.2	0.00	0.00	0.00
4,300.0	17.29	227.31	4,202.1	697.88	-456.2	-494.6	-412.4	0.00	0.00	0.00

Database:	EDM 5000.1 Single User Db	Local Co-ordinate Reference:	Well MLD 6
Company:	EXTRACTION OIL & GAS	TVD Reference:	KB-EST @ 4900.0usft (Original Well Elev)
Project:	WELD COUNTY, COLORADO (NAD 83)	MD Reference:	KB-EST @ 4900.0usft (Original Well Elev)
Site:	SEC. 22 T4N R68W 6th P.M.	North Reference:	True
Well:	MLD 6	Survey Calculation Method:	Minimum Curvature
Wellbore:	ORIGINAL WELLBORE		
Design:	PROPOSAL #1		

Planned Survey

MD (usft)	Inc (°)	Azi (°)	TVD (usft)	SS (usft)	+N/-S (usft)	+E/-W (usft)	Vertical Section (usft)	Dogleg Rate (°/100usft)	Build Rate (°/100usft)	Turn Rate (°/100usft)
4,400.0	17.29	227.31	4,297.6	602.39	-476.3	-516.4	-430.7	0.00	0.00	0.00
4,500.0	17.29	227.31	4,393.1	506.91	-496.5	-538.3	-448.9	0.00	0.00	0.00
4,600.0	17.29	227.31	4,488.6	411.43	-516.6	-560.1	-467.1	0.00	0.00	0.00
4,700.0	17.29	227.31	4,584.1	315.95	-536.8	-582.0	-485.3	0.00	0.00	0.00
4,800.0	17.29	227.31	4,679.5	220.46	-556.9	-603.8	-503.5	0.00	0.00	0.00
4,900.0	17.29	227.31	4,775.0	124.98	-577.1	-625.7	-521.7	0.00	0.00	0.00
5,000.0	17.29	227.31	4,870.5	29.50	-597.2	-647.5	-540.0	0.00	0.00	0.00
5,100.0	17.29	227.31	4,966.0	-65.98	-617.4	-669.3	-558.2	0.00	0.00	0.00
5,200.0	17.29	227.31	5,061.5	-161.46	-637.5	-691.2	-576.4	0.00	0.00	0.00
5,300.0	17.29	227.31	5,156.9	-256.95	-657.7	-713.0	-594.6	0.00	0.00	0.00
5,400.0	17.29	227.31	5,252.4	-352.43	-677.8	-734.9	-612.8	0.00	0.00	0.00
5,500.0	17.29	227.31	5,347.9	-447.91	-698.0	-756.7	-631.0	0.00	0.00	0.00
END OF TANGENT										
5,553.3	17.29	227.31	5,398.8	-498.83	-708.7	-768.4	-640.8	0.00	0.00	0.00
5,600.0	15.89	227.31	5,443.6	-543.56	-717.7	-778.2	-648.9	3.00	-3.00	0.00
5,700.0	12.89	227.31	5,540.4	-640.41	-734.6	-796.4	-664.2	3.00	-3.00	0.00
5,800.0	9.89	227.31	5,638.4	-738.43	-748.0	-810.9	-676.3	3.00	-3.00	0.00
5,900.0	6.89	227.31	5,737.3	-837.35	-757.9	-821.7	-685.2	3.00	-3.00	0.00
6,000.0	3.89	227.31	5,836.9	-936.90	-764.2	-828.6	-691.0	3.00	-3.00	0.00
6,100.0	0.89	227.31	5,936.8	-1,036.80	-767.0	-831.6	-693.5	3.00	-3.00	0.00
EOD TO VERTICAL										
6,129.6	0.00	0.00	5,966.4	-1,066.40	-767.2	-831.8	-693.7	3.00	-3.00	0.00
KOP (9°/100ft BUR)										
6,159.6	0.00	0.00	5,996.4	-1,096.40	-767.2	-831.8	-693.7	0.00	0.00	0.00
6,200.0	3.64	89.28	6,036.8	-1,136.77	-767.2	-830.5	-692.4	9.00	9.00	0.00
6,300.0	12.64	89.28	6,135.7	-1,235.66	-767.0	-816.4	-678.5	9.00	9.00	0.00
6,400.0	21.64	89.28	6,231.1	-1,331.12	-766.6	-787.0	-649.5	9.00	9.00	0.00
6,500.0	30.64	89.28	6,320.8	-1,420.81	-766.1	-742.9	-606.2	9.00	9.00	0.00
6,600.0	39.64	89.28	6,402.5	-1,502.50	-765.4	-685.5	-549.6	9.00	9.00	0.00
6,700.0	48.64	89.28	6,474.2	-1,574.19	-764.5	-615.9	-481.2	9.00	9.00	0.00
NIOBRARA										
6,745.5	52.73	89.28	6,503.0	-1,603.00	-764.0	-580.7	-446.5	9.00	9.00	0.00
6,800.0	57.64	89.28	6,534.1	-1,634.12	-763.5	-536.0	-402.5	9.00	9.00	0.00
6,900.0	66.64	89.28	6,580.8	-1,680.81	-762.4	-447.7	-315.6	9.00	9.00	0.00
7,000.0	75.64	89.28	6,613.1	-1,713.10	-761.2	-353.1	-222.6	9.00	9.00	0.00
7,100.0	84.64	89.28	6,630.2	-1,730.21	-760.0	-254.7	-125.7	9.00	9.00	0.00
7" ICP - MLD 6										
7,159.6	90.00	89.28	6,633.0	-1,733.00	-759.2	-195.2	-67.2	9.00	9.00	0.00
7,200.0	90.00	89.28	6,633.0	-1,733.00	-758.7	-154.8	-27.4	0.00	0.00	0.00
7,300.0	90.00	89.28	6,633.0	-1,733.00	-757.4	-54.8	71.0	0.00	0.00	0.00
7,400.0	90.00	89.28	6,633.0	-1,733.00	-756.2	45.2	169.4	0.00	0.00	0.00
7,500.0	90.00	89.28	6,633.0	-1,733.00	-754.9	145.2	267.9	0.00	0.00	0.00
7,600.0	90.00	89.28	6,633.0	-1,733.00	-753.7	245.1	366.3	0.00	0.00	0.00
7,700.0	90.00	89.28	6,633.0	-1,733.00	-752.4	345.1	464.7	0.00	0.00	0.00
7,800.0	90.00	89.28	6,633.0	-1,733.00	-751.2	445.1	563.1	0.00	0.00	0.00
7,900.0	90.00	89.28	6,633.0	-1,733.00	-749.9	545.1	661.5	0.00	0.00	0.00
8,000.0	90.00	89.28	6,633.0	-1,733.00	-748.7	645.1	759.9	0.00	0.00	0.00
8,100.0	90.00	89.28	6,633.0	-1,733.00	-747.4	745.1	858.3	0.00	0.00	0.00
8,200.0	90.00	89.28	6,633.0	-1,733.00	-746.1	845.1	956.7	0.00	0.00	0.00
8,300.0	90.00	89.28	6,633.0	-1,733.00	-744.9	945.1	1,055.1	0.00	0.00	0.00
8,400.0	90.00	89.28	6,633.0	-1,733.00	-743.6	1,045.1	1,153.6	0.00	0.00	0.00
8,500.0	90.00	89.28	6,633.0	-1,733.00	-742.4	1,145.1	1,252.0	0.00	0.00	0.00
8,600.0	90.00	89.28	6,633.0	-1,733.00	-741.1	1,245.1	1,350.4	0.00	0.00	0.00

Database:	EDM 5000.1 Single User Db	Local Co-ordinate Reference:	Well MLD 6
Company:	EXTRACTION OIL & GAS	TVD Reference:	KB-EST @ 4900.0usft (Original Well Elev)
Project:	WELD COUNTY, COLORADO (NAD 83)	MD Reference:	KB-EST @ 4900.0usft (Original Well Elev)
Site:	SEC. 22 T4N R68W 6th P.M.	North Reference:	True
Well:	MLD 6	Survey Calculation Method:	Minimum Curvature
Wellbore:	ORIGINAL WELLBORE		
Design:	PROPOSAL #1		

Planned Survey

MD (usft)	Inc (°)	Azi (°)	TVD (usft)	SS (usft)	+N/-S (usft)	+E/-W (usft)	Vertical Section (usft)	Dogleg Rate (°/100usft)	Build Rate (°/100usft)	Turn Rate (°/100usft)
8,700.0	90.00	89.28	6,633.0	-1,733.00	-739.9	1,345.1	1,448.8	0.00	0.00	0.00
8,800.0	90.00	89.28	6,633.0	-1,733.00	-738.6	1,445.0	1,547.2	0.00	0.00	0.00
8,900.0	90.00	89.28	6,633.0	-1,733.00	-737.4	1,545.0	1,645.6	0.00	0.00	0.00
9,000.0	90.00	89.28	6,633.0	-1,733.00	-736.1	1,645.0	1,744.0	0.00	0.00	0.00
9,100.0	90.00	89.28	6,633.0	-1,733.00	-734.9	1,745.0	1,842.4	0.00	0.00	0.00
9,200.0	90.00	89.28	6,633.0	-1,733.00	-733.6	1,845.0	1,940.9	0.00	0.00	0.00
9,300.0	90.00	89.28	6,633.0	-1,733.00	-732.4	1,945.0	2,039.3	0.00	0.00	0.00
9,400.0	90.00	89.28	6,633.0	-1,733.00	-731.1	2,045.0	2,137.7	0.00	0.00	0.00
9,500.0	90.00	89.28	6,633.0	-1,733.00	-729.9	2,145.0	2,236.1	0.00	0.00	0.00
9,600.0	90.00	89.28	6,633.0	-1,733.00	-728.6	2,245.0	2,334.5	0.00	0.00	0.00
9,700.0	90.00	89.28	6,633.0	-1,733.00	-727.4	2,345.0	2,432.9	0.00	0.00	0.00
9,800.0	90.00	89.28	6,633.0	-1,733.00	-726.1	2,445.0	2,531.3	0.00	0.00	0.00
9,900.0	90.00	89.28	6,633.0	-1,733.00	-724.9	2,545.0	2,629.7	0.00	0.00	0.00
10,000.0	90.00	89.28	6,633.0	-1,733.00	-723.6	2,645.0	2,728.2	0.00	0.00	0.00
10,100.0	90.00	89.29	6,633.0	-1,733.00	-722.4	2,744.9	2,826.6	0.00	0.00	0.00
10,200.0	90.00	89.29	6,633.0	-1,733.00	-721.1	2,844.9	2,925.0	0.00	0.00	0.00
10,300.0	90.00	89.29	6,633.0	-1,733.00	-719.9	2,944.9	3,023.4	0.00	0.00	0.00
10,400.0	90.00	89.29	6,633.0	-1,733.00	-718.6	3,044.9	3,121.8	0.00	0.00	0.00
10,500.0	90.00	89.29	6,633.0	-1,733.00	-717.4	3,144.9	3,220.2	0.00	0.00	0.00
10,600.0	90.00	89.29	6,633.0	-1,733.00	-716.2	3,244.9	3,318.6	0.00	0.00	0.00
10,700.0	90.00	89.29	6,633.0	-1,733.00	-714.9	3,344.9	3,417.0	0.00	0.00	0.00
10,800.0	90.00	89.29	6,633.0	-1,733.00	-713.7	3,444.9	3,515.5	0.00	0.00	0.00
10,900.0	90.00	89.29	6,633.0	-1,733.00	-712.4	3,544.9	3,613.9	0.00	0.00	0.00
11,000.0	90.00	89.29	6,633.0	-1,733.00	-711.2	3,644.9	3,712.3	0.00	0.00	0.00
11,100.0	90.00	89.29	6,633.0	-1,733.00	-709.9	3,744.9	3,810.7	0.00	0.00	0.00
11,200.0	90.00	89.29	6,633.0	-1,733.00	-708.7	3,844.9	3,909.1	0.00	0.00	0.00
11,300.0	90.00	89.29	6,633.0	-1,733.00	-707.4	3,944.9	4,007.5	0.00	0.00	0.00
11,400.0	90.00	89.29	6,633.0	-1,733.00	-706.2	4,044.8	4,105.9	0.00	0.00	0.00
11,500.0	90.00	89.29	6,633.0	-1,733.00	-704.9	4,144.8	4,204.3	0.00	0.00	0.00
BHL - MLD 6										
11,560.0	90.00	89.29	6,633.0	-1,733.00	-704.2	4,204.8	4,263.4	0.00	0.00	0.00

Formations

MD (usft)	TVD (usft)	Name	Lithology	Dip (°)	Dip Direction (°)
2,894.4	2,860.0	PARKMAN		0.00	
3,736.4	3,664.0	SUSSEX		0.00	
4,171.0	4,079.0	SHANNON		0.00	
6,745.5	6,503.0	NIOBRARA		0.00	

Database:	EDM 5000.1 Single User Db	Local Co-ordinate Reference:	Well MLD 6
Company:	EXTRACTION OIL & GAS	TVD Reference:	KB-EST @ 4900.0usft (Original Well Elev)
Project:	WELD COUNTY, COLORADO (NAD 83)	MD Reference:	KB-EST @ 4900.0usft (Original Well Elev)
Site:	SEC. 22 T4N R68W 6th P.M.	North Reference:	True
Well:	MLD 6	Survey Calculation Method:	Minimum Curvature
Wellbore:	ORIGINAL WELLBORE		
Design:	PROPOSAL #1		

Plan Annotations

MD (usft)	TVD (usft)	Local Coordinates		Comment
		+N/-S (usft)	+E/-W (usft)	
1,750.0	1,750.0	0.0	0.0	START NUDGE (3°/100ft BUR)
2,326.3	2,317.6	-58.5	-63.4	EOB TO 17.29° INC
5,553.3	5,398.8	-708.7	-768.4	END OF TANGENT
6,129.6	5,966.4	-767.2	-831.8	EOD TO VERTICAL
6,159.6	5,996.4	-767.2	-831.8	KOP (9°/100ft BUR)
7,159.6	6,633.0	-759.2	-195.2	7" ICP - MLD 6
11,560.0	6,633.0	-704.2	4,204.8	BHL - MLD 6