

EXTRACTION OIL & GAS

WELD COUNTY, COLORADO (NAD 83)

SEC. 22 T4N R68W 6th P.M.

MLD 5

ORIGINAL WELLBORE

29 July, 2014

Plan: PROPOSAL #1





Project: WELD COUNTY, COLORADO (NAD 83)
Site: SEC. 22 T4N R68W 6th P.M.
Well: MLD 5
Wellbore: ORIGINAL WELLBORE
Design: PROPOSAL #1

ANNOTATIONS

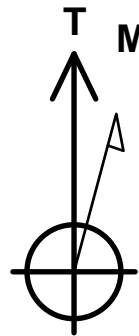
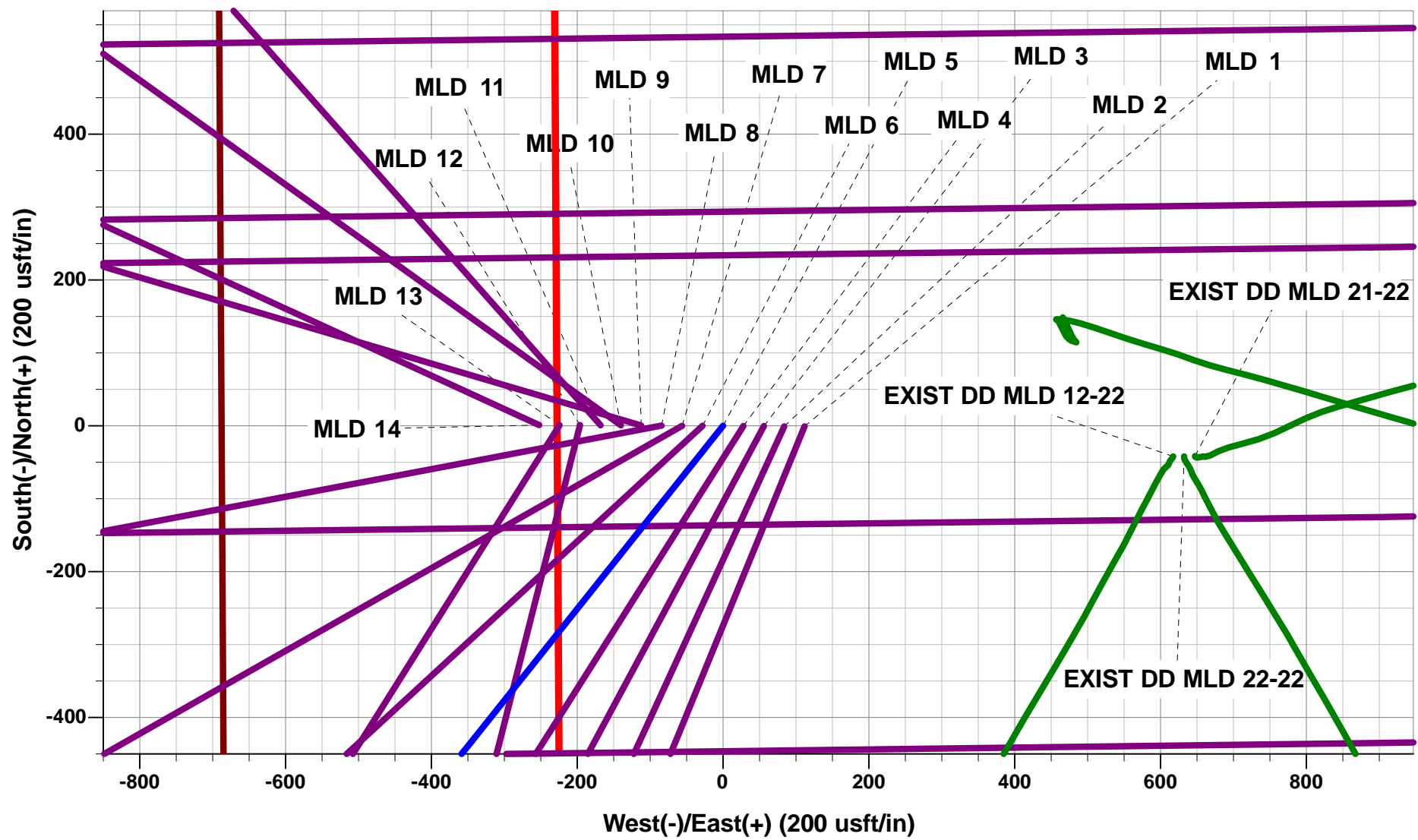
TVD	MD	Inc	Azi	+N/-S	+E/-W	VSect	Dep	Annotation
1850.0	1850.0	0.00	0.00	0.0	0.0	0.0	0.0	START NUDGE (3°/100ft BUR)
2561.0	2578.5	21.86	218.55	-107.4	-85.5	-57.8	137.3	EOB TO 21.86° INC
5310.4	5540.9	21.86	218.55	-969.8	-772.8	-522.1	1240.1	END OF TANGENT
6021.4	6269.4	0.00	0.00	-1077.2	-858.3	-579.9	1377.3	EOD TO VERTICAL
6171.4	6419.4	0.00	0.00	-1077.2	-858.3	-579.9	1377.3	KOP (9°/100ft BUR)
6808.0	7419.4	90.00	89.28	-1069.2	-221.7	36.8	2013.9	7" ICP - MLD 5
6808.0	11819.0	90.00	89.29	-1014.2	4177.5	4298.9	6413.5	BHL - MLD 5

WELLBORE TARGET DETAILS (LAT/LONG)

Name	TVD	+N/-S	+E/-W	Latitude	Longitude
KOP - MLD 5	6171.4	-1077.2	-858.3	40.301013	-104.999443
7" ICP - MLD 5	6808.0	-1069.2	-221.7	40.301035	-104.997161
BHL - MLD 5	6808.0	-1014.2	4177.5	40.301185	-104.981389

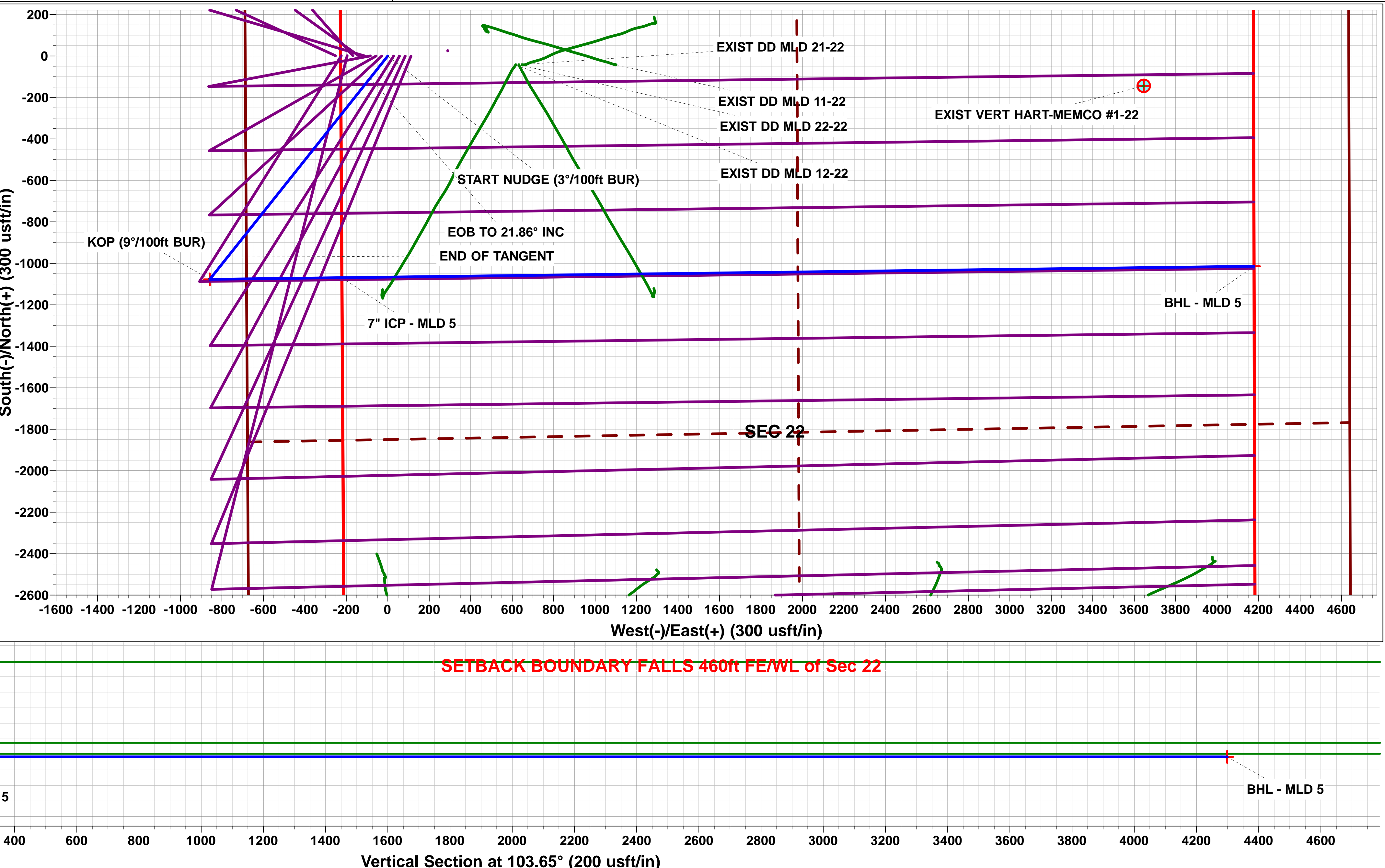
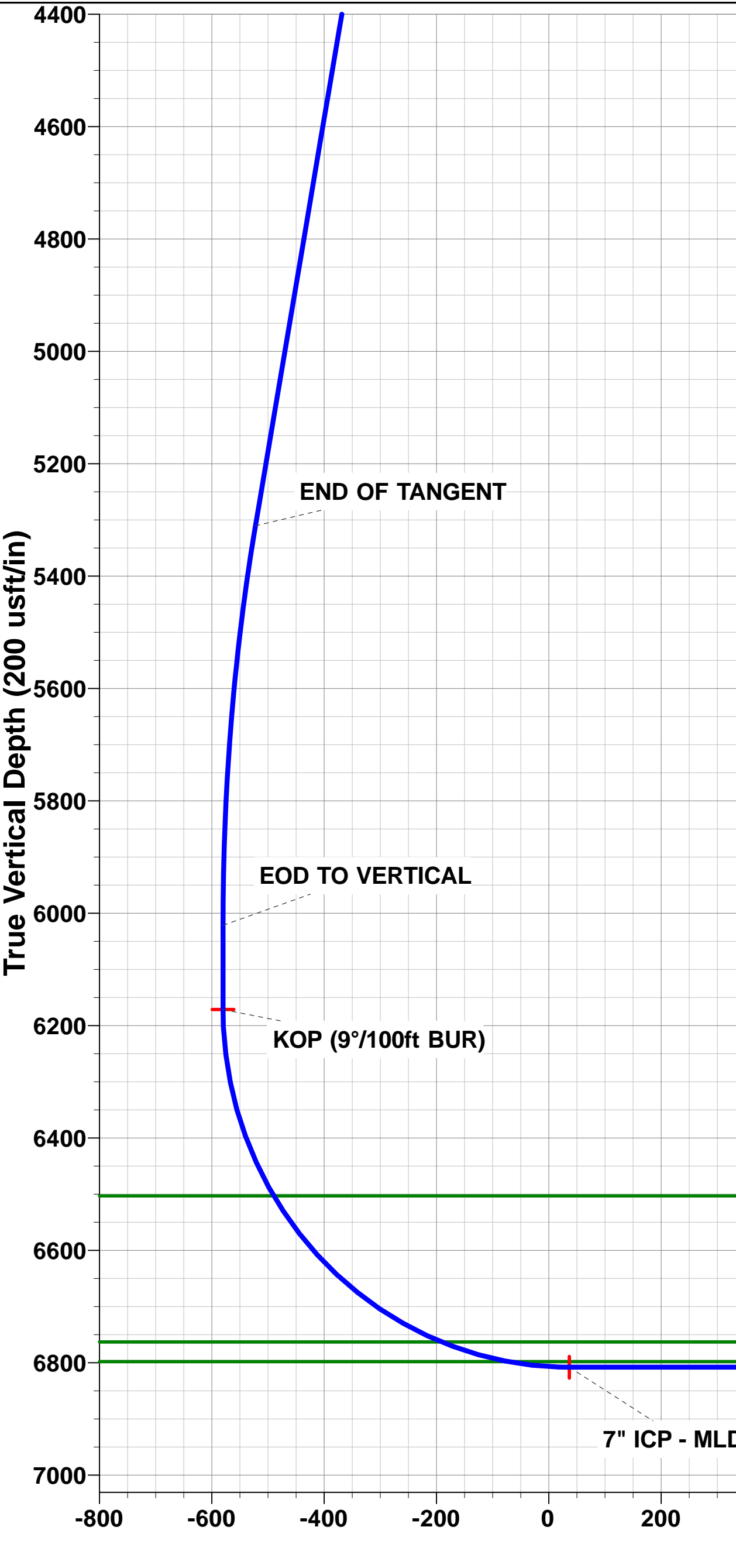
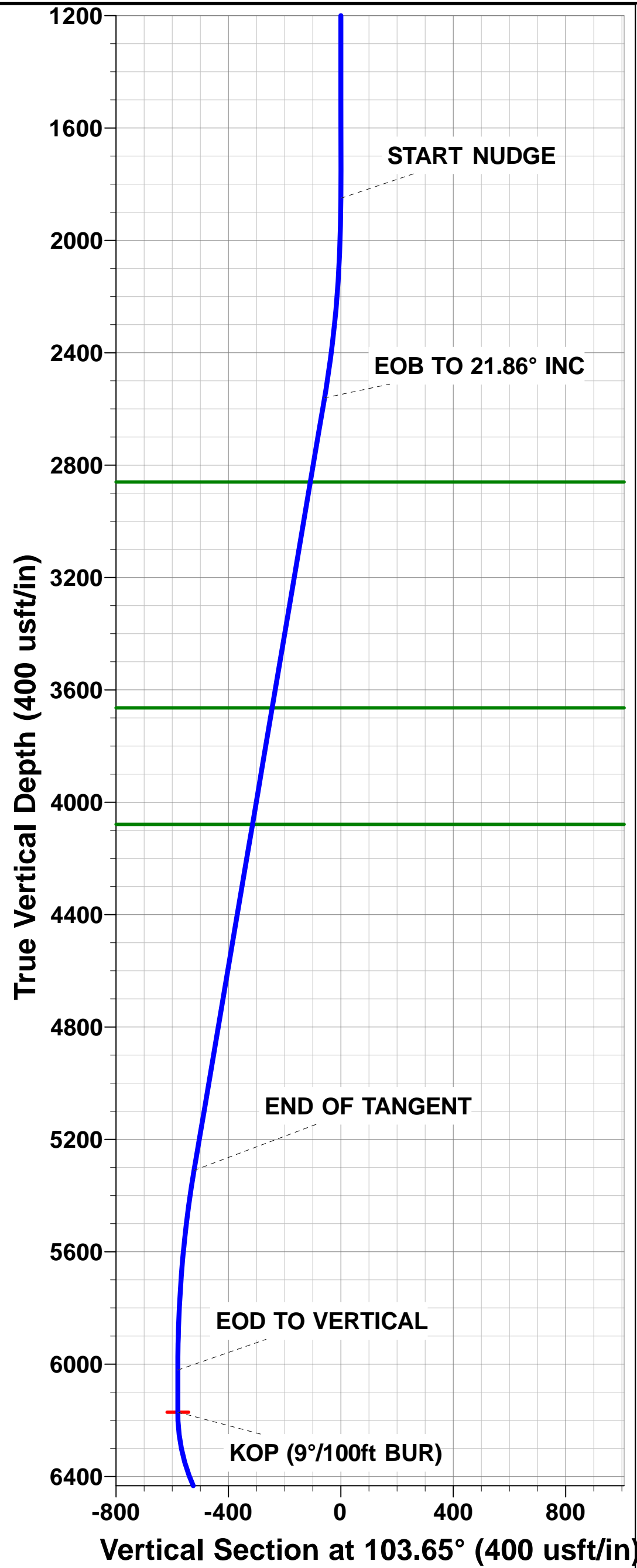
FORMATION TOP DETAILS

TVDPath	MDPath	Formation
2860.0	2900.7	PARKMAN
3664.0	3767.0	SUSSEX
4079.0	4214.1	SHANNON
6503.0	6768.2	NIOBRARA
6763.0	7178.6	FORT HAYS
6798.0	7306.4	CODELL



Azimuths to True North
Magnetic North: 8.56°

Magnetic Field
Strength: 52727.3snT
Dip Angle: 66.83°
Date: 29/07/2014
Model: IGRF2010



Planning Report



Database:	EDM 5000.1 Single User Db	Local Co-ordinate Reference:	Well MLD 5
Company:	EXTRACTION OIL & GAS	TVD Reference:	KB-EST @ 4900.0usft (Original Well Elev)
Project:	WELD COUNTY, COLORADO (NAD 83)	MD Reference:	KB-EST @ 4900.0usft (Original Well Elev)
Site:	SEC. 22 T4N R68W 6th P.M.	North Reference:	True
Well:	MLD 5	Survey Calculation Method:	Minimum Curvature
Wellbore:	ORIGINAL WELLBORE		
Design:	PROPOSAL #1		

Project	WELD COUNTY, COLORADO (NAD 83)		
Map System:	US State Plane 1983	System Datum:	Mean Sea Level
Geo Datum:	North American Datum 1983		
Map Zone:	Colorado Northern Zone		Using geodetic scale factor

Site	SEC. 22 T4N R68W 6th P.M.		
Site Position:		Northing:	1,350,393.80 usft
From:	Lat/Long	Easting:	3,140,798.83 usft
Position Uncertainty:	0.0 usft	Slot Radius:	1.10000 ft
		Latitude:	40.294131
		Longitude:	-104.995243
		Grid Convergence:	0.33 °

Well	MLD 5		
Well Position	+N-S	3,584.4 usft	Northing: 1,353,976.20 usfi
	+E-W	-313.2 usft	Easting: 3,140,465.22 usfi
Position Uncertainty		0.0 usft	Wellhead Elevation: usfi
			Latitude: 40.303970
			Longitude: -104.996366
			Ground Level: 4,876.0 usft

Wellbore	ORIGINAL WELLBORE				
Magnetics	Model Name	Sample Date	Declination (°)	Dip Angle (°)	Field Strength (nT)
	IGRF2010	29/07/2014	8.56	66.83	52,727

Design	PROPOSAL #1			
Audit Notes:				
Version:	Phase:	PROTOTYPE	Tie On Depth:	0.0
Vertical Section:	Depth From (TVD) (usft)	+N-S (usft)	+E-W (usft)	Direction (°)
	0.0	0.0	0.0	103.65

Plan Sections											
MD (usft)	Inc (°)	Azi (°)	Vertical Depth	SS (usft)	+N-S (usft)	+E-W (usft)	Dogleg Rate (°/100usf)	Build Rate (°/100usf)	Turn Rate (°/100usf)	TFO (°)	Target
0.0	0.00	0.00	0.0	-4,900.0	0.0	0.0	0.00	0.00	0.00	0.00	
1,850.0	0.00	0.00	1,850.0	-3,050.0	0.0	0.0	0.00	0.00	0.00	0.00	
2,578.5	21.86	218.55	2,561.0	-2,339.0	-107.4	-85.5	3.00	3.00	0.00	218.55	
5,540.9	21.86	218.55	5,310.4	410.4	-969.8	-772.8	0.00	0.00	0.00	0.00	
6,269.4	0.00	0.00	6,021.4	1,121.4	-1,077.2	-858.3	3.00	-3.00	0.00	180.00	
6,419.4	0.00	0.00	6,171.4	1,271.4	-1,077.2	-858.3	0.00	0.00	0.00	0.00	KOP - MLD 5
7,419.4	90.00	89.28	6,808.0	1,908.0	-1,069.2	-221.7	9.00	9.00	8.93	89.28	7" ICP - MLD 5
11,819.0	90.00	89.29	6,808.0	1,908.0	-1,014.2	4,177.5	0.00	0.00	0.00	95.54	BHL - MLD 5

Planning Report



Database:	EDM 5000.1 Single User Db	Local Co-ordinate Reference:	Well MLD 5
Company:	EXTRACTION OIL & GAS	TVD Reference:	KB-EST @ 4900.0usft (Original Well Elev)
Project:	WELD COUNTY, COLORADO (NAD 83)	MD Reference:	KB-EST @ 4900.0usft (Original Well Elev)
Site:	SEC. 22 T4N R68W 6th P.M.	North Reference:	True
Well:	MLD 5	Survey Calculation Method:	Minimum Curvature
Wellbore:	ORIGINAL WELLBORE		
Design:	PROPOSAL #1		

Planned Survey

MD (usft)	Inc (°)	Azi (°)	TVD (usft)	SS (usft)	+N/-S (usft)	+E/-W (usft)	Vertical Section (usft)	Dogleg Rate (°/100usft)	Build Rate (°/100usft)	Turn Rate (°/100usft)
0.0	0.00	0.00	0.0	4,900.00	0.0	0.0	0.0	0.00	0.00	0.00
100.0	0.00	0.00	100.0	4,800.00	0.0	0.0	0.0	0.00	0.00	0.00
200.0	0.00	0.00	200.0	4,700.00	0.0	0.0	0.0	0.00	0.00	0.00
300.0	0.00	0.00	300.0	4,600.00	0.0	0.0	0.0	0.00	0.00	0.00
400.0	0.00	0.00	400.0	4,500.00	0.0	0.0	0.0	0.00	0.00	0.00
500.0	0.00	0.00	500.0	4,400.00	0.0	0.0	0.0	0.00	0.00	0.00
600.0	0.00	0.00	600.0	4,300.00	0.0	0.0	0.0	0.00	0.00	0.00
700.0	0.00	0.00	700.0	4,200.00	0.0	0.0	0.0	0.00	0.00	0.00
800.0	0.00	0.00	800.0	4,100.00	0.0	0.0	0.0	0.00	0.00	0.00
900.0	0.00	0.00	900.0	4,000.00	0.0	0.0	0.0	0.00	0.00	0.00
1,000.0	0.00	0.00	1,000.0	3,900.00	0.0	0.0	0.0	0.00	0.00	0.00
1,100.0	0.00	0.00	1,100.0	3,800.00	0.0	0.0	0.0	0.00	0.00	0.00
1,200.0	0.00	0.00	1,200.0	3,700.00	0.0	0.0	0.0	0.00	0.00	0.00
1,300.0	0.00	0.00	1,300.0	3,600.00	0.0	0.0	0.0	0.00	0.00	0.00
1,400.0	0.00	0.00	1,400.0	3,500.00	0.0	0.0	0.0	0.00	0.00	0.00
1,500.0	0.00	0.00	1,500.0	3,400.00	0.0	0.0	0.0	0.00	0.00	0.00
1,600.0	0.00	0.00	1,600.0	3,300.00	0.0	0.0	0.0	0.00	0.00	0.00
1,700.0	0.00	0.00	1,700.0	3,200.00	0.0	0.0	0.0	0.00	0.00	0.00
1,800.0	0.00	0.00	1,800.0	3,100.00	0.0	0.0	0.0	0.00	0.00	0.00
START NUDGE (3°/100ft BUR)										
1,850.0	0.00	0.00	1,850.0	3,050.00	0.0	0.0	0.0	0.00	0.00	0.00
1,900.0	1.50	218.55	1,900.0	3,000.01	-0.5	-0.4	-0.3	3.00	3.00	0.00
2,000.0	4.50	218.55	1,999.8	2,900.15	-4.6	-3.7	-2.5	3.00	3.00	0.00
2,100.0	7.50	218.55	2,099.3	2,800.71	-12.8	-10.2	-6.9	3.00	3.00	0.00
2,200.0	10.50	218.55	2,198.0	2,701.96	-25.0	-19.9	-13.5	3.00	3.00	0.00
2,300.0	13.50	218.55	2,295.8	2,604.15	-41.3	-32.9	-22.2	3.00	3.00	0.00
2,400.0	16.50	218.55	2,392.4	2,507.57	-61.5	-49.0	-33.1	3.00	3.00	0.00
2,500.0	19.50	218.55	2,487.5	2,412.48	-85.7	-68.3	-46.1	3.00	3.00	0.00
EOB TO 21.86° INC										
2,578.5	21.86	218.55	2,561.0	2,339.02	-107.4	-85.5	-57.8	3.00	3.00	0.00
2,600.0	21.86	218.55	2,580.9	2,319.08	-113.6	-90.5	-61.2	0.00	0.00	0.00
2,700.0	21.86	218.55	2,673.7	2,226.27	-142.7	-113.7	-76.8	0.00	0.00	0.00
2,800.0	21.86	218.55	2,766.5	2,133.46	-171.8	-136.9	-92.5	0.00	0.00	0.00
2,900.0	21.86	218.55	2,859.4	2,040.65	-201.0	-160.1	-108.2	0.00	0.00	0.00
PARKMAN										
2,900.7	21.86	218.55	2,860.0	2,040.00	-201.2	-160.3	-108.3	0.00	0.00	0.00
3,000.0	21.86	218.55	2,952.2	1,947.83	-230.1	-183.3	-123.9	0.00	0.00	0.00
3,100.0	21.86	218.55	3,045.0	1,855.02	-259.2	-206.5	-139.5	0.00	0.00	0.00
3,200.0	21.86	218.55	3,137.8	1,762.21	-288.3	-229.7	-155.2	0.00	0.00	0.00
3,300.0	21.86	218.55	3,230.6	1,669.40	-317.4	-252.9	-170.9	0.00	0.00	0.00
3,400.0	21.86	218.55	3,323.4	1,576.58	-346.5	-276.1	-186.6	0.00	0.00	0.00
3,500.0	21.86	218.55	3,416.2	1,483.77	-375.6	-299.3	-202.2	0.00	0.00	0.00
3,600.0	21.86	218.55	3,509.0	1,390.96	-404.8	-322.5	-217.9	0.00	0.00	0.00
3,700.0	21.86	218.55	3,601.9	1,298.14	-433.9	-345.7	-233.6	0.00	0.00	0.00
SUSSEX										
3,767.0	21.86	218.55	3,664.0	1,236.00	-453.4	-361.2	-244.1	0.00	0.00	0.00
3,800.0	21.86	218.55	3,694.7	1,205.33	-463.0	-368.9	-249.3	0.00	0.00	0.00
3,900.0	21.86	218.55	3,787.5	1,112.52	-492.1	-392.1	-264.9	0.00	0.00	0.00
4,000.0	21.86	218.55	3,880.3	1,019.71	-521.2	-415.3	-280.6	0.00	0.00	0.00
4,100.0	21.86	218.55	3,973.1	926.89	-550.3	-438.5	-296.3	0.00	0.00	0.00
4,200.0	21.86	218.55	4,065.9	834.08	-579.4	-461.7	-312.0	0.00	0.00	0.00
SHANNON										
4,214.1	21.86	218.55	4,079.0	821.00	-583.6	-465.0	-314.2	0.00	0.00	0.00
4,300.0	21.86	218.55	4,158.7	741.27	-608.6	-484.9	-327.6	0.00	0.00	0.00

Database:	EDM 5000.1 Single User Db	Local Co-ordinate Reference:	Well MLD 5
Company:	EXTRACTION OIL & GAS	TVD Reference:	KB-EST @ 4900.0usft (Original Well Elev)
Project:	WELD COUNTY, COLORADO (NAD 83)	MD Reference:	KB-EST @ 4900.0usft (Original Well Elev)
Site:	SEC. 22 T4N R68W 6th P.M.	North Reference:	True
Well:	MLD 5	Survey Calculation Method:	Minimum Curvature
Wellbore:	ORIGINAL WELLBORE		
Design:	PROPOSAL #1		

Planned Survey

MD (usft)	Inc (°)	Azi (°)	TVD (usft)	SS (usft)	+N/-S (usft)	+E/-W (usft)	Vertical Section (usft)	Dogleg Rate (°/100usft)	Build Rate (°/100usft)	Turn Rate (°/100usft)
4,400.0	21.86	218.55	4,251.5	648.46	-637.7	-508.1	-343.3	0.00	0.00	0.00
4,500.0	21.86	218.55	4,344.4	555.64	-666.8	-531.3	-359.0	0.00	0.00	0.00
4,600.0	21.86	218.55	4,437.2	462.83	-695.9	-554.5	-374.7	0.00	0.00	0.00
4,700.0	21.86	218.55	4,530.0	370.02	-725.0	-577.7	-390.3	0.00	0.00	0.00
4,800.0	21.86	218.55	4,622.8	277.21	-754.1	-600.9	-406.0	0.00	0.00	0.00
4,900.0	21.86	218.55	4,715.6	184.39	-783.3	-624.1	-421.7	0.00	0.00	0.00
5,000.0	21.86	218.55	4,808.4	91.58	-812.4	-647.3	-437.3	0.00	0.00	0.00
5,100.0	21.86	218.55	4,901.2	-1.23	-841.5	-670.5	-453.0	0.00	0.00	0.00
5,200.0	21.86	218.55	4,994.0	-94.04	-870.6	-693.7	-468.7	0.00	0.00	0.00
5,300.0	21.86	218.55	5,086.9	-186.86	-899.7	-716.9	-484.4	0.00	0.00	0.00
5,400.0	21.86	218.55	5,179.7	-279.67	-928.8	-740.1	-500.0	0.00	0.00	0.00
5,500.0	21.86	218.55	5,272.5	-372.48	-957.9	-763.3	-515.7	0.00	0.00	0.00
END OF TANGENT										
5,540.9	21.86	218.55	5,310.4	-410.42	-969.8	-772.8	-522.1	0.00	0.00	0.00
5,600.0	20.08	218.55	5,365.6	-465.63	-986.4	-785.9	-531.0	3.00	-3.00	0.00
5,700.0	17.08	218.55	5,460.4	-560.40	-1,011.3	-805.8	-544.5	3.00	-3.00	0.00
5,800.0	14.08	218.55	5,556.7	-656.72	-1,032.3	-822.5	-555.8	3.00	-3.00	0.00
5,900.0	11.08	218.55	5,654.3	-754.30	-1,049.3	-836.1	-564.9	3.00	-3.00	0.00
6,000.0	8.08	218.55	5,752.9	-852.90	-1,062.4	-846.5	-571.9	3.00	-3.00	0.00
6,100.0	5.08	218.55	5,852.2	-952.23	-1,071.3	-853.6	-576.8	3.00	-3.00	0.00
6,200.0	2.08	218.55	5,952.0	-1,052.02	-1,076.2	-857.5	-579.4	3.00	-3.00	0.00
EOD TO VERTICAL										
6,269.4	0.00	0.00	6,021.4	-1,121.40	-1,077.2	-858.3	-579.9	3.00	-3.00	0.00
6,300.0	0.00	0.00	6,052.0	-1,152.00	-1,077.2	-858.3	-579.9	0.00	0.00	0.00
6,400.0	0.00	0.00	6,152.0	-1,252.00	-1,077.2	-858.3	-579.9	0.00	0.00	0.00
KOP (9°/100ft BUR)										
6,419.4	0.00	0.00	6,171.4	-1,271.40	-1,077.2	-858.3	-579.9	0.00	0.00	0.00
6,500.0	7.25	89.28	6,251.8	-1,351.79	-1,077.1	-853.2	-575.0	9.00	9.00	0.00
6,600.0	16.25	89.28	6,349.6	-1,449.59	-1,076.9	-832.9	-555.3	9.00	9.00	0.00
6,700.0	25.26	89.28	6,443.0	-1,543.01	-1,076.4	-797.5	-521.0	9.00	9.00	0.00
NIOBRARA										
6,768.2	31.39	89.28	6,503.0	-1,603.00	-1,076.0	-765.1	-489.7	9.00	9.00	0.00
6,800.0	34.26	89.28	6,529.7	-1,629.73	-1,075.8	-747.9	-473.0	9.00	9.00	0.00
6,900.0	43.26	89.28	6,607.6	-1,707.63	-1,075.0	-685.4	-412.4	9.00	9.00	0.00
7,000.0	52.26	89.28	6,674.8	-1,774.79	-1,074.1	-611.4	-340.7	9.00	9.00	0.00
7,100.0	61.26	89.28	6,729.6	-1,829.56	-1,073.1	-527.9	-259.8	9.00	9.00	0.00
FORT HAYS										
7,178.6	68.33	89.28	6,763.0	-1,863.00	-1,072.2	-456.8	-191.0	9.00	9.00	0.00
7,200.0	70.26	89.28	6,770.6	-1,870.58	-1,071.9	-436.8	-171.6	9.00	9.00	0.00
7,300.0	79.26	89.28	6,796.8	-1,896.84	-1,070.7	-340.4	-78.2	9.00	9.00	0.00
CODELL										
7,306.4	79.83	89.28	6,798.0	-1,898.00	-1,070.6	-334.1	-72.1	9.00	9.00	0.00
7,400.0	88.26	89.28	6,807.7	-1,907.71	-1,069.5	-241.1	18.0	9.00	9.00	0.00
7" ICP - MLD 5										
7,419.4	90.00	89.28	6,808.0	-1,908.00	-1,069.2	-221.7	36.8	9.00	9.00	0.00
7,500.0	90.00	89.28	6,808.0	-1,908.00	-1,068.2	-141.1	114.9	0.00	0.00	0.00
7,600.0	90.00	89.28	6,808.0	-1,908.00	-1,067.0	-41.1	211.8	0.00	0.00	0.00
7,700.0	90.00	89.28	6,808.0	-1,908.00	-1,065.7	58.9	308.6	0.00	0.00	0.00
7,800.0	90.00	89.28	6,808.0	-1,908.00	-1,064.5	158.9	405.5	0.00	0.00	0.00
7,900.0	90.00	89.28	6,808.0	-1,908.00	-1,063.2	258.8	502.4	0.00	0.00	0.00
8,000.0	90.00	89.28	6,808.0	-1,908.00	-1,062.0	358.8	599.3	0.00	0.00	0.00
8,100.0	90.00	89.28	6,808.0	-1,908.00	-1,060.7	458.8	696.1	0.00	0.00	0.00
8,200.0	90.00	89.28	6,808.0	-1,908.00	-1,059.5	558.8	793.0	0.00	0.00	0.00

Planning Report



Database:	EDM 5000.1 Single User Db	Local Co-ordinate Reference:	Well MLD 5
Company:	EXTRACTION OIL & GAS	TVD Reference:	KB-EST @ 4900.0usft (Original Well Elev)
Project:	WELD COUNTY, COLORADO (NAD 83)	MD Reference:	KB-EST @ 4900.0usft (Original Well Elev)
Site:	SEC. 22 T4N R68W 6th P.M.	North Reference:	True
Well:	MLD 5	Survey Calculation Method:	Minimum Curvature
Wellbore:	ORIGINAL WELLBORE		
Design:	PROPOSAL #1		

Planned Survey										
MD (usft)	Inc (°)	Azi (°)	TVD (usft)	SS (usft)	+N/-S (usft)	+E/-W (usft)	Vertical Section (usft)	Dogleg Rate (°/100usft)	Build Rate (°/100usft)	Turn Rate (°/100usft)
8,300.0	90.00	89.28	6,808.0	-1,908.00	-1,058.2	658.8	889.9	0.00	0.00	0.00
8,400.0	90.00	89.28	6,808.0	-1,908.00	-1,056.9	758.8	986.8	0.00	0.00	0.00
8,500.0	90.00	89.28	6,808.0	-1,908.00	-1,055.7	858.8	1,083.6	0.00	0.00	0.00
8,600.0	90.00	89.28	6,808.0	-1,908.00	-1,054.4	958.8	1,180.5	0.00	0.00	0.00
8,700.0	90.00	89.28	6,808.0	-1,908.00	-1,053.2	1,058.8	1,277.4	0.00	0.00	0.00
8,800.0	90.00	89.28	6,808.0	-1,908.00	-1,051.9	1,158.8	1,374.2	0.00	0.00	0.00
8,900.0	90.00	89.28	6,808.0	-1,908.00	-1,050.7	1,258.8	1,471.1	0.00	0.00	0.00
9,000.0	90.00	89.28	6,808.0	-1,908.00	-1,049.4	1,358.8	1,568.0	0.00	0.00	0.00
9,100.0	90.00	89.28	6,808.0	-1,908.00	-1,048.2	1,458.8	1,664.9	0.00	0.00	0.00
9,200.0	90.00	89.28	6,808.0	-1,908.00	-1,046.9	1,558.7	1,761.7	0.00	0.00	0.00
9,300.0	90.00	89.28	6,808.0	-1,908.00	-1,045.7	1,658.7	1,858.6	0.00	0.00	0.00
9,400.0	90.00	89.28	6,808.0	-1,908.00	-1,044.4	1,758.7	1,955.5	0.00	0.00	0.00
9,500.0	90.00	89.28	6,808.0	-1,908.00	-1,043.2	1,858.7	2,052.4	0.00	0.00	0.00
9,600.0	90.00	89.28	6,808.0	-1,908.00	-1,041.9	1,958.7	2,149.2	0.00	0.00	0.00
9,700.0	90.00	89.28	6,808.0	-1,908.00	-1,040.7	2,058.7	2,246.1	0.00	0.00	0.00
9,800.0	90.00	89.28	6,808.0	-1,908.00	-1,039.4	2,158.7	2,343.0	0.00	0.00	0.00
9,900.0	90.00	89.28	6,808.0	-1,908.00	-1,038.2	2,258.7	2,439.9	0.00	0.00	0.00
10,000.0	90.00	89.28	6,808.0	-1,908.00	-1,036.9	2,358.7	2,536.7	0.00	0.00	0.00
10,100.0	90.00	89.28	6,808.0	-1,908.00	-1,035.7	2,458.7	2,633.6	0.00	0.00	0.00
10,200.0	90.00	89.28	6,808.0	-1,908.00	-1,034.4	2,558.7	2,730.5	0.00	0.00	0.00
10,300.0	90.00	89.28	6,808.0	-1,908.00	-1,033.2	2,658.7	2,827.4	0.00	0.00	0.00
10,400.0	90.00	89.28	6,808.0	-1,908.00	-1,031.9	2,758.7	2,924.2	0.00	0.00	0.00
10,500.0	90.00	89.28	6,808.0	-1,908.00	-1,030.7	2,858.6	3,021.1	0.00	0.00	0.00
10,600.0	90.00	89.28	6,808.0	-1,908.00	-1,029.4	2,958.6	3,118.0	0.00	0.00	0.00
10,700.0	90.00	89.28	6,808.0	-1,908.00	-1,028.2	3,058.6	3,214.9	0.00	0.00	0.00
10,800.0	90.00	89.28	6,808.0	-1,908.00	-1,026.9	3,158.6	3,311.7	0.00	0.00	0.00
10,900.0	90.00	89.28	6,808.0	-1,908.00	-1,025.7	3,258.6	3,408.6	0.00	0.00	0.00
11,000.0	90.00	89.28	6,808.0	-1,908.00	-1,024.5	3,358.6	3,505.5	0.00	0.00	0.00
11,100.0	90.00	89.28	6,808.0	-1,908.00	-1,023.2	3,458.6	3,602.4	0.00	0.00	0.00
11,200.0	90.00	89.28	6,808.0	-1,908.00	-1,022.0	3,558.6	3,699.2	0.00	0.00	0.00
11,300.0	90.00	89.28	6,808.0	-1,908.00	-1,020.7	3,658.6	3,796.1	0.00	0.00	0.00
11,400.0	90.00	89.28	6,808.0	-1,908.00	-1,019.5	3,758.6	3,893.0	0.00	0.00	0.00
11,500.0	90.00	89.28	6,808.0	-1,908.00	-1,018.2	3,858.6	3,989.9	0.00	0.00	0.00
11,600.0	90.00	89.29	6,808.0	-1,908.00	-1,017.0	3,958.6	4,086.7	0.00	0.00	0.00
11,700.0	90.00	89.29	6,808.0	-1,908.00	-1,015.7	4,058.6	4,183.6	0.00	0.00	0.00
11,800.0	90.00	89.29	6,808.0	-1,908.00	-1,014.5	4,158.5	4,280.5	0.00	0.00	0.00
BHL - MLD 5										
11,819.0	90.00	89.29	6,808.0	-1,908.00	-1,014.2	4,177.5	4,298.9	0.00	0.00	0.00

Formations						
MD (usft)	TVD (usft)	Name	Lithology	Dip (°)	Dip Direction (°)	
2,900.7	2,860.0	PARKMAN		0.00		
3,767.0	3,664.0	SUSSEX		0.00		
4,214.1	4,079.0	SHANNON		0.00		
6,768.2	6,503.0	NIOBRARA		0.00		
7,178.6	6,763.0	FORT HAYS		0.00		
7,306.4	6,798.0	CODELL		0.00		

Database:	EDM 5000.1 Single User Db	Local Co-ordinate Reference:	Well MLD 5
Company:	EXTRACTION OIL & GAS	TVD Reference:	KB-EST @ 4900.0usft (Original Well Elev)
Project:	WELD COUNTY, COLORADO (NAD 83)	MD Reference:	KB-EST @ 4900.0usft (Original Well Elev)
Site:	SEC. 22 T4N R68W 6th P.M.	North Reference:	True
Well:	MLD 5	Survey Calculation Method:	Minimum Curvature
Wellbore:	ORIGINAL WELLBORE		
Design:	PROPOSAL #1		

Plan Annotations

MD (usft)	TVD (usft)	Local Coordinates		Comment
		+N/-S (usft)	+E/-W (usft)	
1,850.0	1,850.0	0.0	0.0	START NUDGE (3°/100ft BUR)
2,578.5	2,561.0	-107.4	-85.5	EOB TO 21.86° INC
5,540.9	5,310.4	-969.8	-772.8	END OF TANGENT
6,269.4	6,021.4	-1,077.2	-858.3	EOD TO VERTICAL
6,419.4	6,171.4	-1,077.2	-858.3	KOP (9°/100ft BUR)
7,419.4	6,808.0	-1,069.2	-221.7	7" ICP - MLD 5
11,819.0	6,808.0	-1,014.2	4,177.5	BHL - MLD 5