

EXTRACTION OIL & GAS

WELD COUNTY, COLORADO (NAD 83)

SEC. 22 T4N R68W 6th P.M.

MLD 2

ORIGINAL WELLBORE

29 July, 2014

Plan: PROPOSAL #1





Project: WELD COUNTY, COLORADO (NAD 83)
Site: SEC. 22 T4N R68W 6th P.M.
Well: MLD 2
Wellbore: ORIGINAL WELLBORE
Design: PROPOSAL #1

ANNOTATIONS

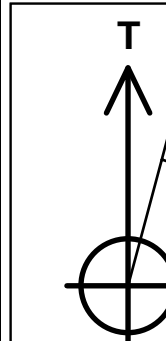
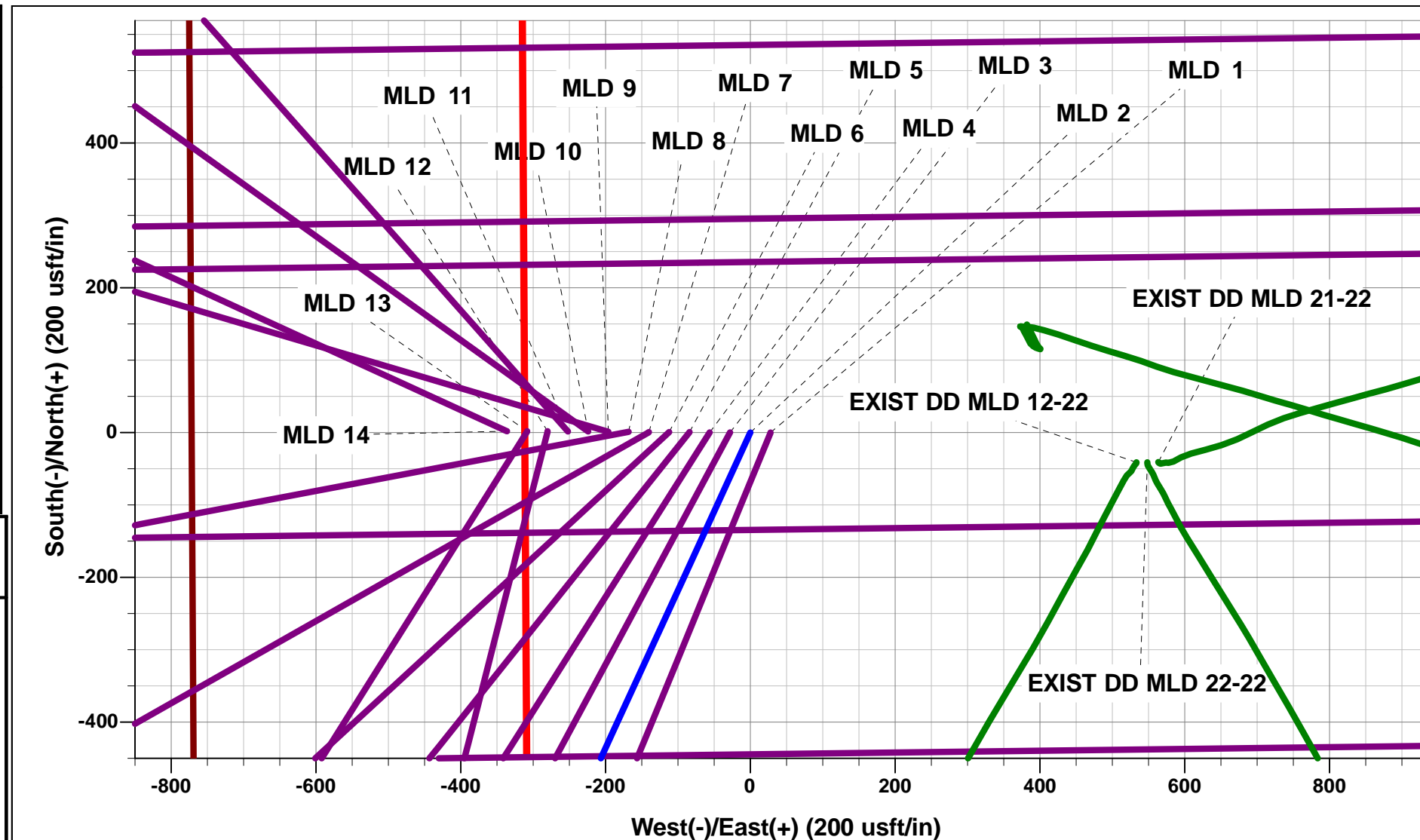
TVD	MD	Inc	Azi	+N/-S	+E/-W	VSect	Dep	Annotation
2150.0	2150.0	0.00	0.00	0.0	0.0	0.0	0.0	START NUDGE (3°/100ft BUR)
3507.6	3660.1	45.30	204.65	-514.9	-236.2	5.3	566.5	EOB TO 45.3° INC
4608.6	5225.5	45.30	204.65	-1526.3	-700.3	15.8	1679.2	END OF TANGENT
5966.2	6735.5	0.00	0.00	-2041.2	-936.5	21.1	2245.8	EOD TO VERTICAL
5996.2	6765.5	0.00	0.00	-2041.2	-936.5	21.1	2245.8	KOP (9°/100ft BUR)
6633.0	7765.8	90.00	88.69	-2026.6	-299.9	591.0	2882.6	7" ICP - MLD 2
6633.0	12163.1	90.00	88.69	-1926.1	4096.2	4526.5	7279.8	BHL - MLD 2

WELLBORE TARGET DETAILS (LAT/LONG)

Name	TVD	+N/-S	+E/-W	Latitude	Longitude
KOP - MLD 2	5996.2	-2041.2	-936.5	40.298365	-104.999422
7" ICP - MLD 2	6633.0	-2026.6	-299.9	40.298405	-104.997140
BHL - MLD 2	6633.0	-1926.1	4096.2	40.298680	-104.981380

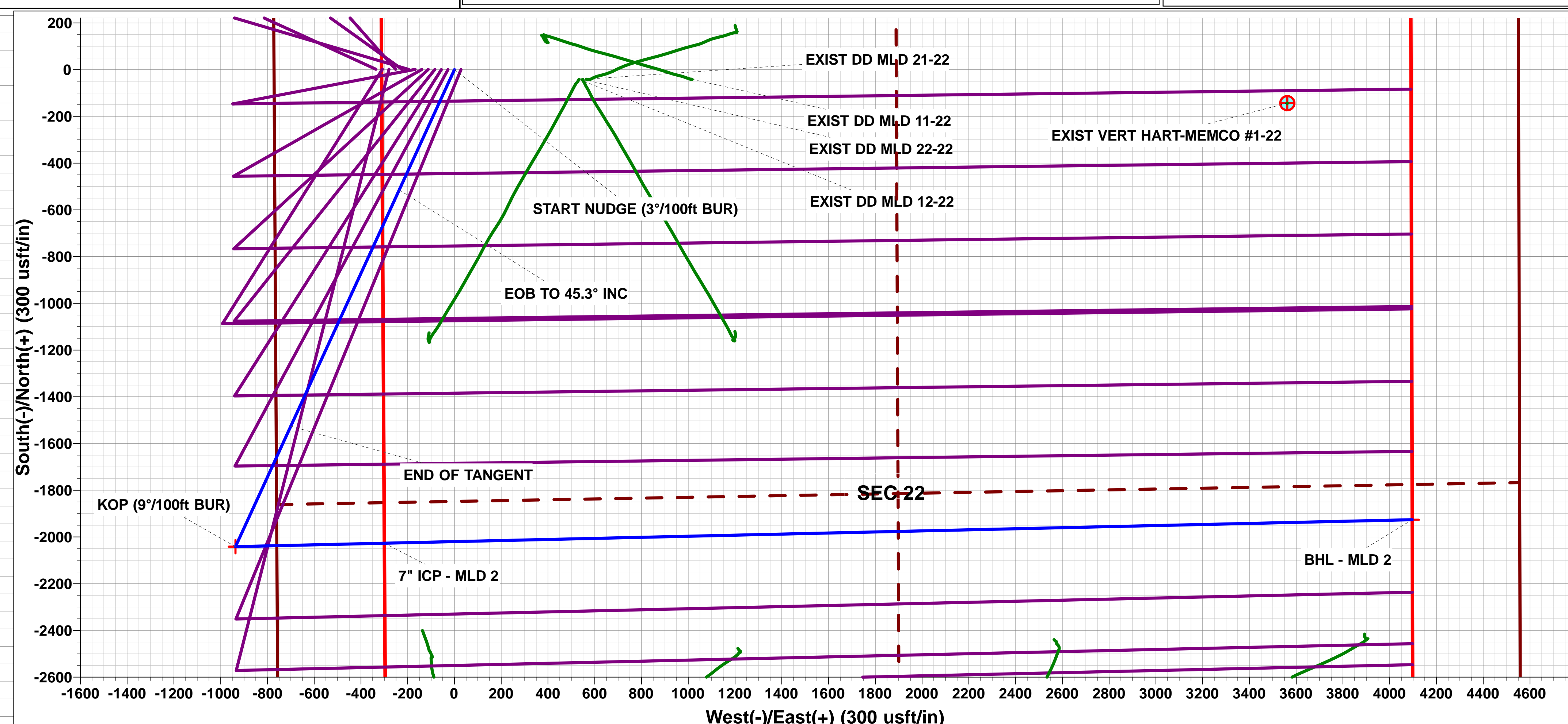
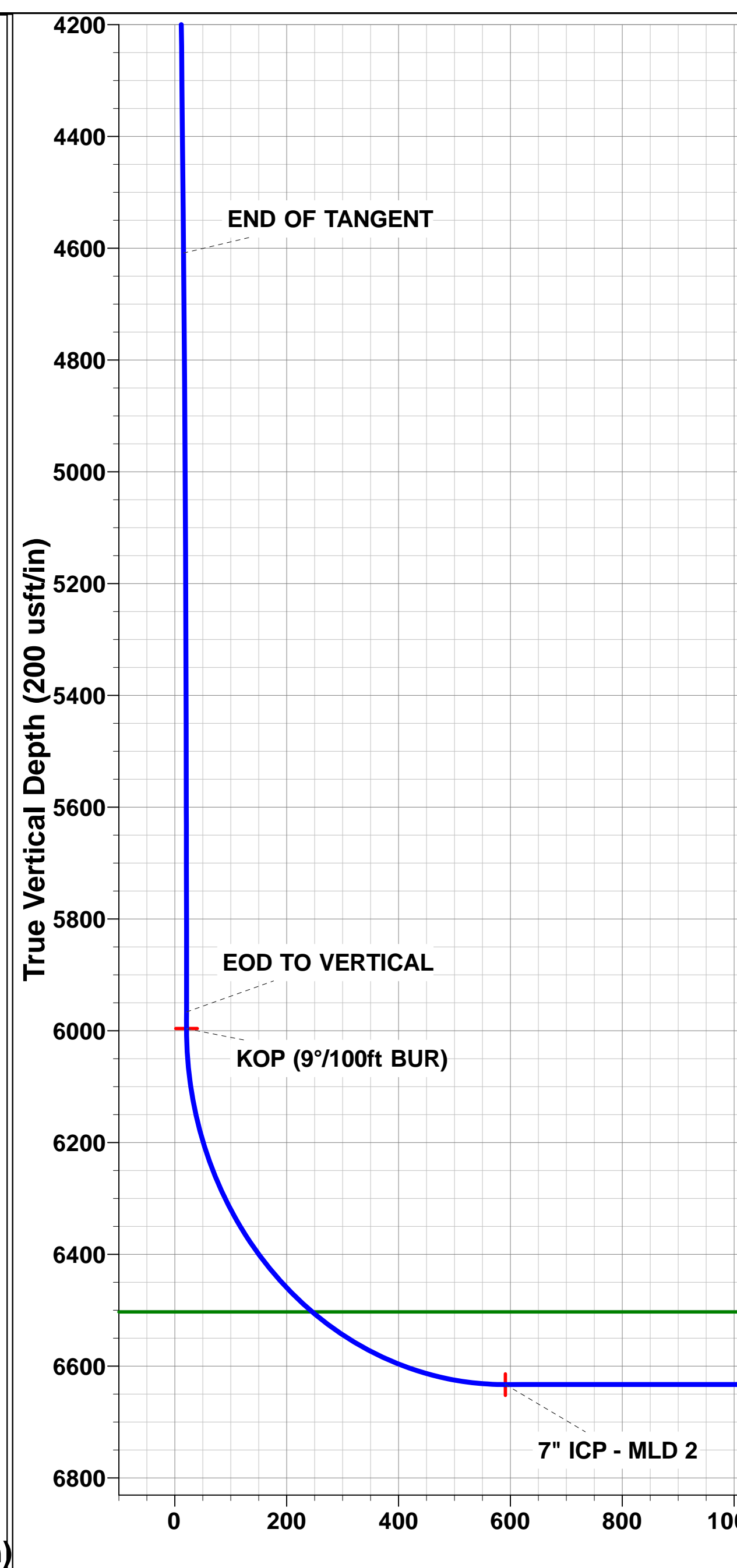
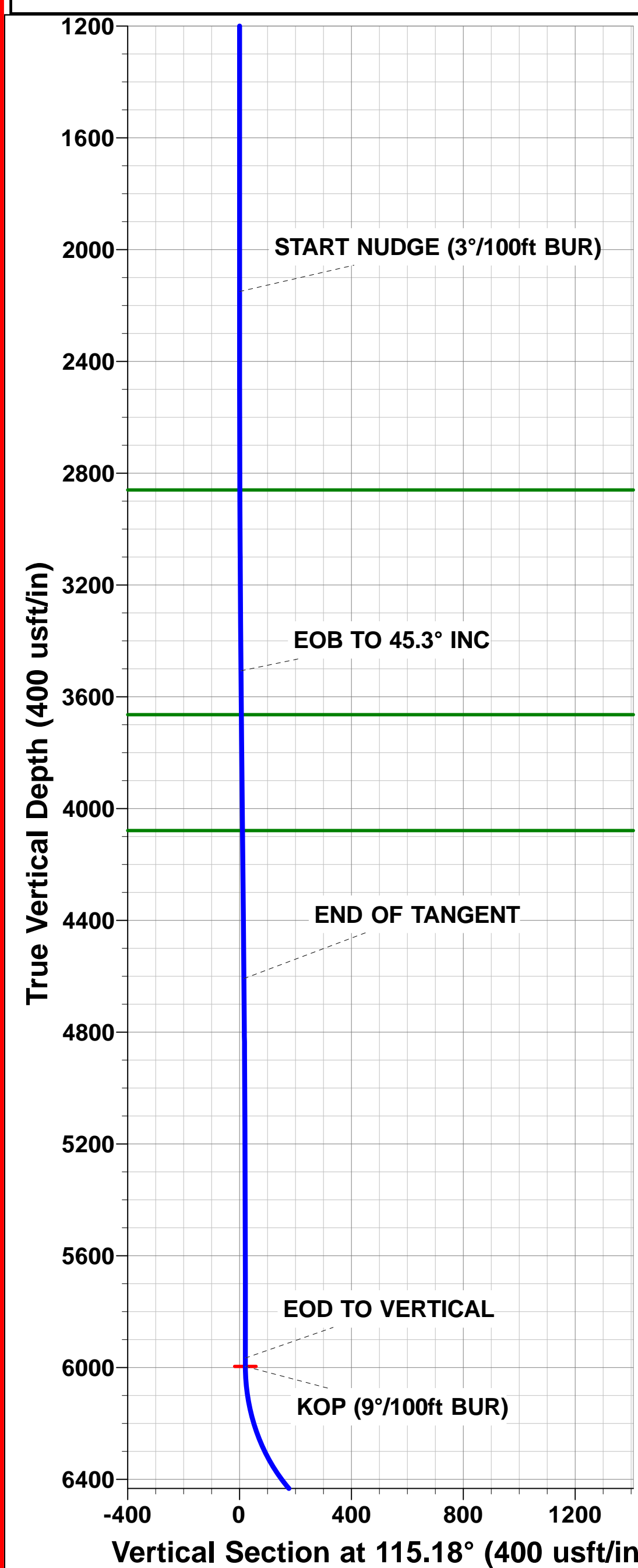
FORMATION TOP DETAILS

TVDPath	MDPath	Formation
2860.0	2877.5	PARKMAN
3664.0	3882.5	SUSSEX
4079.0	4472.5	SHANNON
6503.0	7351.7	NIOBRARA



Azimuths to True North
Magnetic North: 8.56°

Magnetic Field
Strength: 52727.3snT
Dip Angle: 66.83°
Date: 29/07/2014
Model: IGRF2010



SETBACK BOUNDARY FALLS 460ft FE/WL of Sec 22

Vertical Section at 115.18° (200 usft/in)

Planning Report



Database:	EDM 5000.1 Single User Db	Local Co-ordinate Reference:	Well MLD 2
Company:	EXTRACTION OIL & GAS	TVD Reference:	KB-EST @ 4901.0usft (Original Well Elev)
Project:	WELD COUNTY, COLORADO (NAD 83)	MD Reference:	KB-EST @ 4901.0usft (Original Well Elev)
Site:	SEC. 22 T4N R68W 6th P.M.	North Reference:	True
Well:	MLD 2	Survey Calculation Method:	Minimum Curvature
Wellbore:	ORIGINAL WELLBORE		
Design:	PROPOSAL #1		

Project	WELD COUNTY, COLORADO (NAD 83)		
Map System:	US State Plane 1983	System Datum:	Mean Sea Level
Geo Datum:	North American Datum 1983		
Map Zone:	Colorado Northern Zone		Using geodetic scale factor

Site	SEC. 22 T4N R68W 6th P.M.		
Site Position:		Northing:	1,350,393.80 usft
From:	Lat/Long	Easting:	3,140,798.83 usft
Position Uncertainty:	0.0 usft	Slot Radius:	1.10000ft
		Latitude:	40.294131
		Longitude:	-104.995243
		Grid Convergence:	0.33 °

Well	MLD 2		
Well Position	+N-S	3,583.7 usft	Northing: 1,353,975.94 usfi
	+E-W	-229.3 usft	Easting: 3,140,549.17 usfi
Position Uncertainty		0.0 usft	Wellhead Elevation: usfi
			Latitude: 40.303968
			Longitude: -104.996065
			Ground Level: 4,877.0 usft

Wellbore	ORIGINAL WELLBORE				
Magnetics	Model Name	Sample Date	Declination (°)	Dip Angle (°)	Field Strength (nT)
	IGRF2010	29/07/2014	8.56	66.83	52,727

Design	PROPOSAL #1			
Audit Notes:				
Version:	Phase:	PROTOTYPE	Tie On Depth:	0.0
Vertical Section:	Depth From (TVD) (usft)	+N-S (usft)	+E-W (usft)	Direction (°)
	0.0	0.0	0.0	115.18

Plan Sections											
MD (usft)	Inc (°)	Azi (°)	Vertical Depth	SS (usft)	+N-S (usft)	+E-W (usft)	Dogleg Rate (°/100usf)	Build Rate (°/100usf)	Turn Rate (°/100usf)	TFO (°)	Target
0.0	0.00	0.00	0.0	-4,901.0	0.0	0.0	0.00	0.00	0.00	0.00	
2,150.0	0.00	0.00	2,150.0	-2,751.0	0.0	0.0	0.00	0.00	0.00	0.00	
3,660.1	45.30	204.65	3,507.6	-1,393.4	-514.9	-236.2	3.00	3.00	0.00	204.65	
5,225.5	45.30	204.65	4,608.6	-292.4	-1,526.3	-700.3	0.00	0.00	0.00	0.00	
6,735.5	0.00	0.00	5,966.2	1,065.2	-2,041.2	-936.5	3.00	-3.00	0.00	180.00	
6,765.5	0.00	0.00	5,996.2	1,095.2	-2,041.2	-936.5	0.00	0.00	0.00	0.00	KOP - MLD 2
7,765.8	90.00	88.69	6,633.0	1,732.0	-2,026.6	-299.9	9.00	9.00	8.87	88.69	7" ICP - MLD 2
12,163.1	90.00	88.69	6,633.0	1,732.0	-1,926.1	4,096.2	0.00	0.00	0.00	106.41	BHL - MLD 2

Planning Report



Database:	EDM 5000.1 Single User Db	Local Co-ordinate Reference:	Well MLD 2
Company:	EXTRACTION OIL & GAS	TVD Reference:	KB-EST @ 4901.0usft (Original Well Elev)
Project:	WELD COUNTY, COLORADO (NAD 83)	MD Reference:	KB-EST @ 4901.0usft (Original Well Elev)
Site:	SEC. 22 T4N R68W 6th P.M.	North Reference:	True
Well:	MLD 2	Survey Calculation Method:	Minimum Curvature
Wellbore:	ORIGINAL WELLBORE		
Design:	PROPOSAL #1		

Planned Survey

MD (usft)	Inc (°)	Azi (°)	TVD (usft)	SS (usft)	+N/-S (usft)	+E/-W (usft)	Vertical Section (usft)	Dogleg Rate (°/100usft)	Build Rate (°/100usft)	Turn Rate (°/100usft)
0.0	0.00	0.00	0.0	4,901.00	0.0	0.0	0.0	0.00	0.00	0.00
100.0	0.00	0.00	100.0	4,801.00	0.0	0.0	0.0	0.00	0.00	0.00
200.0	0.00	0.00	200.0	4,701.00	0.0	0.0	0.0	0.00	0.00	0.00
300.0	0.00	0.00	300.0	4,601.00	0.0	0.0	0.0	0.00	0.00	0.00
400.0	0.00	0.00	400.0	4,501.00	0.0	0.0	0.0	0.00	0.00	0.00
500.0	0.00	0.00	500.0	4,401.00	0.0	0.0	0.0	0.00	0.00	0.00
600.0	0.00	0.00	600.0	4,301.00	0.0	0.0	0.0	0.00	0.00	0.00
700.0	0.00	0.00	700.0	4,201.00	0.0	0.0	0.0	0.00	0.00	0.00
800.0	0.00	0.00	800.0	4,101.00	0.0	0.0	0.0	0.00	0.00	0.00
900.0	0.00	0.00	900.0	4,001.00	0.0	0.0	0.0	0.00	0.00	0.00
1,000.0	0.00	0.00	1,000.0	3,901.00	0.0	0.0	0.0	0.00	0.00	0.00
1,100.0	0.00	0.00	1,100.0	3,801.00	0.0	0.0	0.0	0.00	0.00	0.00
1,200.0	0.00	0.00	1,200.0	3,701.00	0.0	0.0	0.0	0.00	0.00	0.00
1,300.0	0.00	0.00	1,300.0	3,601.00	0.0	0.0	0.0	0.00	0.00	0.00
1,400.0	0.00	0.00	1,400.0	3,501.00	0.0	0.0	0.0	0.00	0.00	0.00
1,500.0	0.00	0.00	1,500.0	3,401.00	0.0	0.0	0.0	0.00	0.00	0.00
1,600.0	0.00	0.00	1,600.0	3,301.00	0.0	0.0	0.0	0.00	0.00	0.00
1,700.0	0.00	0.00	1,700.0	3,201.00	0.0	0.0	0.0	0.00	0.00	0.00
1,800.0	0.00	0.00	1,800.0	3,101.00	0.0	0.0	0.0	0.00	0.00	0.00
1,900.0	0.00	0.00	1,900.0	3,001.00	0.0	0.0	0.0	0.00	0.00	0.00
2,000.0	0.00	0.00	2,000.0	2,901.00	0.0	0.0	0.0	0.00	0.00	0.00
2,100.0	0.00	0.00	2,100.0	2,801.00	0.0	0.0	0.0	0.00	0.00	0.00
START NUDGE (3°/100ft BUR)										
2,150.0	0.00	0.00	2,150.0	2,751.00	0.0	0.0	0.0	0.00	0.00	0.00
2,200.0	1.50	204.65	2,200.0	2,701.01	-0.6	-0.3	0.0	3.00	3.00	0.00
2,300.0	4.50	204.65	2,299.8	2,601.15	-5.4	-2.5	0.1	3.00	3.00	0.00
2,400.0	7.50	204.65	2,399.3	2,501.71	-14.9	-6.8	0.2	3.00	3.00	0.00
2,500.0	10.50	204.65	2,498.0	2,402.96	-29.1	-13.3	0.3	3.00	3.00	0.00
2,600.0	13.50	204.65	2,595.8	2,305.15	-48.0	-22.0	0.5	3.00	3.00	0.00
2,700.0	16.50	204.65	2,692.4	2,208.57	-71.5	-32.8	0.7	3.00	3.00	0.00
2,800.0	19.50	204.65	2,787.5	2,113.48	-99.6	-45.7	1.0	3.00	3.00	0.00
PARKMAN										
2,877.5	21.82	204.65	2,860.0	2,041.00	-124.4	-57.1	1.3	3.00	3.00	0.00
2,900.0	22.50	204.65	2,880.9	2,020.13	-132.1	-60.6	1.4	3.00	3.00	0.00
3,000.0	25.50	204.65	2,972.2	1,928.78	-169.1	-77.6	1.7	3.00	3.00	0.00
3,100.0	28.50	204.65	3,061.3	1,839.69	-210.4	-96.5	2.2	3.00	3.00	0.00
3,200.0	31.50	204.65	3,147.9	1,753.10	-255.8	-117.4	2.6	3.00	3.00	0.00
3,300.0	34.50	204.65	3,231.8	1,669.24	-305.3	-140.1	3.2	3.00	3.00	0.00
3,400.0	37.50	204.65	3,312.6	1,588.35	-358.7	-164.6	3.7	3.00	3.00	0.00
3,500.0	40.50	204.65	3,390.4	1,510.65	-415.9	-190.8	4.3	3.00	3.00	0.00
3,600.0	43.50	204.65	3,464.7	1,436.34	-476.7	-218.7	4.9	3.00	3.00	0.00
EOB TO 45.3° INC										
3,660.1	45.30	204.65	3,507.6	1,393.42	-514.9	-236.2	5.3	3.00	3.00	0.00
3,700.0	45.30	204.65	3,535.7	1,365.34	-540.7	-248.1	5.6	0.00	0.00	0.00
3,800.0	45.30	204.65	3,606.0	1,295.00	-605.3	-277.7	6.3	0.00	0.00	0.00
SUSSEX										
3,882.5	45.30	204.65	3,664.0	1,237.00	-658.6	-302.2	6.8	0.00	0.00	0.00
3,900.0	45.30	204.65	3,676.3	1,224.67	-669.9	-307.4	6.9	0.00	0.00	0.00
4,000.0	45.30	204.65	3,746.7	1,154.33	-734.5	-337.0	7.6	0.00	0.00	0.00
4,100.0	45.30	204.65	3,817.0	1,083.99	-799.1	-366.6	8.3	0.00	0.00	0.00
4,200.0	45.30	204.65	3,887.3	1,013.66	-863.8	-396.3	8.9	0.00	0.00	0.00
4,300.0	45.30	204.65	3,957.7	943.32	-928.4	-425.9	9.6	0.00	0.00	0.00
4,400.0	45.30	204.65	4,028.0	872.98	-993.0	-455.6	10.3	0.00	0.00	0.00
SHANNON										

Planning Report



Database:	EDM 5000.1 Single User Db	Local Co-ordinate Reference:	Well MLD 2
Company:	EXTRACTION OIL & GAS	TVD Reference:	KB-EST @ 4901.0usft (Original Well Elev)
Project:	WELD COUNTY, COLORADO (NAD 83)	MD Reference:	KB-EST @ 4901.0usft (Original Well Elev)
Site:	SEC. 22 T4N R68W 6th P.M.	North Reference:	True
Well:	MLD 2	Survey Calculation Method:	Minimum Curvature
Wellbore:	ORIGINAL WELLBORE		
Design:	PROPOSAL #1		

Planned Survey

MD (usft)	Inc (°)	Azi (°)	TVD (usft)	SS (usft)	+N/-S (usft)	+E/-W (usft)	Vertical Section (usft)	Dogleg Rate (°/100usft)	Build Rate (°/100usft)	Turn Rate (°/100usft)
4,472.5	45.30	204.65	4,079.0	822.00	-1,039.8	-477.1	10.7	0.00	0.00	0.00
4,500.0	45.30	204.65	4,098.4	802.65	-1,057.6	-485.2	10.9	0.00	0.00	0.00
4,600.0	45.30	204.65	4,168.7	732.31	-1,122.2	-514.9	11.6	0.00	0.00	0.00
4,700.0	45.30	204.65	4,239.0	661.97	-1,186.8	-544.5	12.3	0.00	0.00	0.00
4,800.0	45.30	204.65	4,309.4	591.64	-1,251.4	-574.1	12.9	0.00	0.00	0.00
4,900.0	45.30	204.65	4,379.7	521.30	-1,316.0	-603.8	13.6	0.00	0.00	0.00
5,000.0	45.30	204.65	4,450.0	450.96	-1,380.6	-633.4	14.3	0.00	0.00	0.00
5,100.0	45.30	204.65	4,520.4	380.63	-1,445.2	-663.1	14.9	0.00	0.00	0.00
5,200.0	45.30	204.65	4,590.7	310.29	-1,509.8	-692.7	15.6	0.00	0.00	0.00
END OF TANGENT										
5,225.5	45.30	204.65	4,608.6	292.38	-1,526.3	-700.3	15.8	0.00	0.00	0.00
5,300.0	43.07	204.65	4,662.1	238.93	-1,573.5	-721.9	16.3	3.00	-3.00	0.00
5,400.0	40.07	204.65	4,736.9	164.12	-1,633.8	-749.6	16.9	3.00	-3.00	0.00
5,500.0	37.07	204.65	4,815.1	85.94	-1,690.4	-775.6	17.5	3.00	-3.00	0.00
5,600.0	34.07	204.65	4,896.4	4.61	-1,743.3	-799.8	18.0	3.00	-3.00	0.00
5,700.0	31.07	204.65	4,980.7	-79.66	-1,792.2	-822.3	18.5	3.00	-3.00	0.00
5,800.0	28.07	204.65	5,067.6	-166.63	-1,837.1	-842.8	19.0	3.00	-3.00	0.00
5,900.0	25.07	204.65	5,157.1	-256.06	-1,877.7	-861.5	19.4	3.00	-3.00	0.00
6,000.0	22.07	204.65	5,248.7	-347.71	-1,914.0	-878.2	19.8	3.00	-3.00	0.00
6,100.0	19.07	204.65	5,342.3	-441.32	-1,946.0	-892.8	20.1	3.00	-3.00	0.00
6,200.0	16.07	204.65	5,437.7	-536.65	-1,973.4	-905.4	20.4	3.00	-3.00	0.00
6,300.0	13.07	204.65	5,534.4	-633.42	-1,996.3	-915.9	20.6	3.00	-3.00	0.00
6,400.0	10.07	204.65	5,632.4	-731.38	-2,014.5	-924.2	20.8	3.00	-3.00	0.00
6,500.0	7.07	204.65	5,731.3	-830.26	-2,028.0	-930.5	21.0	3.00	-3.00	0.00
6,600.0	4.07	204.65	5,830.8	-929.77	-2,036.8	-934.5	21.0	3.00	-3.00	0.00
6,700.0	1.07	204.65	5,930.7	-1,029.66	-2,040.9	-936.4	21.1	3.00	-3.00	0.00
EOD TO VERTICAL										
6,735.5	0.00	0.00	5,966.2	-1,065.20	-2,041.2	-936.5	21.1	3.00	-3.00	0.00
KOP (9°/100ft BUR)										
6,765.5	0.00	0.00	5,996.2	-1,095.20	-2,041.2	-936.5	21.1	0.00	0.00	0.00
6,800.0	3.10	88.69	6,030.6	-1,129.64	-2,041.2	-935.6	21.9	9.00	9.00	0.00
6,900.0	12.10	88.69	6,129.7	-1,228.66	-2,040.9	-922.4	33.7	9.00	9.00	0.00
7,000.0	21.10	88.69	6,225.4	-1,324.40	-2,040.2	-893.8	59.3	9.00	9.00	0.00
7,100.0	30.09	88.69	6,315.5	-1,414.49	-2,039.2	-850.7	97.9	9.00	9.00	0.00
7,200.0	39.09	88.69	6,397.7	-1,496.73	-2,037.9	-794.0	148.7	9.00	9.00	0.00
7,300.0	48.09	88.69	6,470.1	-1,569.09	-2,036.4	-725.1	210.3	9.00	9.00	0.00
NI0BRARA										
7,351.7	52.74	88.69	6,503.0	-1,602.00	-2,035.4	-685.3	245.9	9.00	9.00	0.00
7,400.0	57.09	88.69	6,530.8	-1,629.78	-2,034.5	-645.8	281.3	9.00	9.00	0.00
7,500.0	66.08	88.69	6,578.3	-1,677.32	-2,032.5	-558.0	359.9	9.00	9.00	0.00
7,600.0	75.08	88.69	6,611.5	-1,710.53	-2,030.4	-463.8	444.3	9.00	9.00	0.00
7,700.0	84.08	88.69	6,629.6	-1,728.60	-2,028.1	-365.6	532.2	9.00	9.00	0.00
7" ICP - MLD 2										
7,765.8	90.00	88.69	6,633.0	-1,732.00	-2,026.6	-299.9	591.0	9.00	9.00	0.00
7,800.0	90.00	88.69	6,633.0	-1,732.00	-2,025.8	-265.7	621.6	0.00	0.00	0.00
7,900.0	90.00	88.69	6,633.0	-1,732.00	-2,023.5	-165.7	711.1	0.00	0.00	0.00
8,000.0	90.00	88.69	6,633.0	-1,732.00	-2,021.3	-65.8	800.6	0.00	0.00	0.00
8,100.0	90.00	88.69	6,633.0	-1,732.00	-2,019.0	34.2	890.1	0.00	0.00	0.00
8,200.0	90.00	88.69	6,633.0	-1,732.00	-2,016.7	134.2	979.6	0.00	0.00	0.00
8,300.0	90.00	88.69	6,633.0	-1,731.99	-2,014.4	234.2	1,069.1	0.00	0.00	0.00
8,400.0	90.00	88.69	6,633.0	-1,731.99	-2,012.1	334.1	1,158.6	0.00	0.00	0.00
8,500.0	90.00	88.69	6,633.0	-1,731.99	-2,009.8	434.1	1,248.1	0.00	0.00	0.00
8,600.0	90.00	88.69	6,633.0	-1,731.99	-2,007.5	534.1	1,337.6	0.00	0.00	0.00

Planning Report



Database:	EDM 5000.1 Single User Db	Local Co-ordinate Reference:	Well MLD 2
Company:	EXTRACTION OIL & GAS	TVD Reference:	KB-EST @ 4901.0usft (Original Well Elev)
Project:	WELD COUNTY, COLORADO (NAD 83)	MD Reference:	KB-EST @ 4901.0usft (Original Well Elev)
Site:	SEC. 22 T4N R68W 6th P.M.	North Reference:	True
Well:	MLD 2	Survey Calculation Method:	Minimum Curvature
Wellbore:	ORIGINAL WELLBORE		
Design:	PROPOSAL #1		

Planned Survey										
MD (usft)	Inc (°)	Azi (°)	TVD (usft)	SS (usft)	+N/-S (usft)	+E/-W (usft)	Vertical Section (usft)	Dogleg Rate (°/100usft)	Build Rate (°/100usft)	Turn Rate (°/100usft)
8,700.0	90.00	88.69	6,633.0	-1,731.99	-2,005.2	634.1	1,427.1	0.00	0.00	0.00
8,800.0	90.00	88.69	6,633.0	-1,731.99	-2,002.9	734.0	1,516.6	0.00	0.00	0.00
8,900.0	90.00	88.69	6,633.0	-1,731.99	-2,000.7	834.0	1,606.1	0.00	0.00	0.00
9,000.0	90.00	88.69	6,633.0	-1,731.99	-1,998.4	934.0	1,695.6	0.00	0.00	0.00
9,100.0	90.00	88.69	6,633.0	-1,731.99	-1,996.1	1,034.0	1,785.1	0.00	0.00	0.00
9,200.0	90.00	88.69	6,633.0	-1,731.99	-1,993.8	1,133.9	1,874.6	0.00	0.00	0.00
9,300.0	90.00	88.69	6,633.0	-1,731.99	-1,991.5	1,233.9	1,964.1	0.00	0.00	0.00
9,400.0	90.00	88.69	6,633.0	-1,731.99	-1,989.2	1,333.9	2,053.5	0.00	0.00	0.00
9,500.0	90.00	88.69	6,633.0	-1,731.99	-1,986.9	1,433.9	2,143.0	0.00	0.00	0.00
9,600.0	90.00	88.69	6,633.0	-1,731.99	-1,984.7	1,533.8	2,232.5	0.00	0.00	0.00
9,700.0	90.00	88.69	6,633.0	-1,731.99	-1,982.4	1,633.8	2,322.0	0.00	0.00	0.00
9,800.0	90.00	88.69	6,633.0	-1,731.99	-1,980.1	1,733.8	2,411.5	0.00	0.00	0.00
9,900.0	90.00	88.69	6,633.0	-1,731.99	-1,977.8	1,833.8	2,501.0	0.00	0.00	0.00
10,000.0	90.00	88.69	6,633.0	-1,731.99	-1,975.5	1,933.7	2,590.5	0.00	0.00	0.00
10,100.0	90.00	88.69	6,633.0	-1,731.99	-1,973.2	2,033.7	2,680.0	0.00	0.00	0.00
10,200.0	90.00	88.69	6,633.0	-1,731.99	-1,970.9	2,133.7	2,769.5	0.00	0.00	0.00
10,300.0	90.00	88.69	6,633.0	-1,731.99	-1,968.6	2,233.6	2,859.0	0.00	0.00	0.00
10,400.0	90.00	88.69	6,633.0	-1,731.99	-1,966.4	2,333.6	2,948.5	0.00	0.00	0.00
10,500.0	90.00	88.69	6,633.0	-1,731.99	-1,964.1	2,433.6	3,038.0	0.00	0.00	0.00
10,600.0	90.00	88.69	6,633.0	-1,731.99	-1,961.8	2,533.6	3,127.5	0.00	0.00	0.00
10,700.0	90.00	88.69	6,633.0	-1,731.99	-1,959.5	2,633.5	3,217.0	0.00	0.00	0.00
10,800.0	90.00	88.69	6,633.0	-1,731.99	-1,957.2	2,733.5	3,306.5	0.00	0.00	0.00
10,900.0	90.00	88.69	6,633.0	-1,731.99	-1,954.9	2,833.5	3,396.0	0.00	0.00	0.00
11,000.0	90.00	88.69	6,633.0	-1,731.99	-1,952.7	2,933.5	3,485.5	0.00	0.00	0.00
11,100.0	90.00	88.69	6,633.0	-1,731.99	-1,950.4	3,033.4	3,575.0	0.00	0.00	0.00
11,200.0	90.00	88.69	6,633.0	-1,731.99	-1,948.1	3,133.4	3,664.5	0.00	0.00	0.00
11,300.0	90.00	88.69	6,633.0	-1,731.99	-1,945.8	3,233.4	3,754.0	0.00	0.00	0.00
11,400.0	90.00	88.69	6,633.0	-1,731.99	-1,943.5	3,333.4	3,843.5	0.00	0.00	0.00
11,500.0	90.00	88.69	6,633.0	-1,731.99	-1,941.2	3,433.3	3,933.0	0.00	0.00	0.00
11,600.0	90.00	88.69	6,633.0	-1,731.99	-1,939.0	3,533.3	4,022.5	0.00	0.00	0.00
11,700.0	90.00	88.69	6,633.0	-1,732.00	-1,936.7	3,633.3	4,112.0	0.00	0.00	0.00
11,800.0	90.00	88.69	6,633.0	-1,732.00	-1,934.4	3,733.3	4,201.5	0.00	0.00	0.00
11,900.0	90.00	88.69	6,633.0	-1,732.00	-1,932.1	3,833.2	4,291.0	0.00	0.00	0.00
12,000.0	90.00	88.69	6,633.0	-1,732.00	-1,929.8	3,933.2	4,380.5	0.00	0.00	0.00
12,100.0	90.00	88.69	6,633.0	-1,732.00	-1,927.5	4,033.2	4,470.0	0.00	0.00	0.00
BHL - MLD 2										
12,163.1	90.00	88.69	6,633.0	-1,732.00	-1,926.1	4,096.2	4,526.5	0.00	0.00	0.00

Formations						
MD (usft)	TVD (usft)	Name	Lithology	Dip (°)	Dip Direction (°)	
2,877.5	2,860.0	PARKMAN		0.00		
3,882.5	3,664.0	SUSSEX		0.00		
4,472.5	4,079.0	SHANNON		0.00		
7,351.7	6,503.0	NIOBRARA		0.00		

Database:	EDM 5000.1 Single User Db	Local Co-ordinate Reference:	Well MLD 2
Company:	EXTRACTION OIL & GAS	TVD Reference:	KB-EST @ 4901.0usft (Original Well Elev)
Project:	WELD COUNTY, COLORADO (NAD 83)	MD Reference:	KB-EST @ 4901.0usft (Original Well Elev)
Site:	SEC. 22 T4N R68W 6th P.M.	North Reference:	True
Well:	MLD 2	Survey Calculation Method:	Minimum Curvature
Wellbore:	ORIGINAL WELLBORE		
Design:	PROPOSAL #1		

Plan Annotations

MD (usft)	TVD (usft)	Local Coordinates		Comment
		+N/-S (usft)	+E/-W (usft)	
2,150.0	2,150.0	0.0	0.0	START NUDGE (3°/100ft BUR)
3,660.1	3,507.6	-514.9	-236.2	EOB TO 45.3° INC
5,225.5	4,608.6	-1,526.3	-700.3	END OF TANGENT
6,735.5	5,966.2	-2,041.2	-936.5	EOD TO VERTICAL
6,765.5	5,996.2	-2,041.2	-936.5	KOP (9°/100ft BUR)
7,765.8	6,633.0	-2,026.6	-299.9	7" ICP - MLD 2
12,163.1	6,633.0	-1,926.1	4,096.2	BHL - MLD 2