



October 4, 2016

Colorado Oil and Gas Conservation Commission
The Chancery Building
1120 Lincoln Street, Suite 801
Denver, CO 80203
Attn: Mr. Matt Lepore, Director

RE: Judy 34-3-7, Doc # 401094785
Section 34: SWSW Township 1N, Range 65 West, 6th P.M.
Weld County, Colorado

Dear Director:

Edge Energy, LLC. ("Edge") is planning to drill the captioned boundary well in accordance with the provisions of COGCC Rule 318A.e.

Edge's proposed wellbore spacing unit consists of the W2W2 Sec. 3, T1S, R65W, creating a 160-acre wellbore spacing unit for the Niobrara formation. Edge is the only working interest owner within the proposed wellbore spacing unit, therefore Edge hereby attest that no notice letters are required under COGCC Rule 318Ae.(5).

Enclosed are copies of the following documents to assist you in your review and approval of Edge's proposed APD for the captioned well:

- Plat illustrating proposed wellbore spacing unit.

Thank you for your attention to the enclosed. Edge respectfully requests that the COGCC review the enclosed information and approve the Application for Permit to Drill the captioned well.

Sincerely,

Julie Webb
Regulatory Analyst
Edge Energy LLC

Kyle E. Rutz—On behalf of L&L405, Inc.
Colorado Licensed Professional Land Surveyor No. 38307
DATE: 8/4/2016
PROJECT#: 2016079

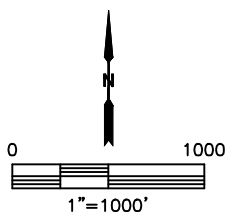
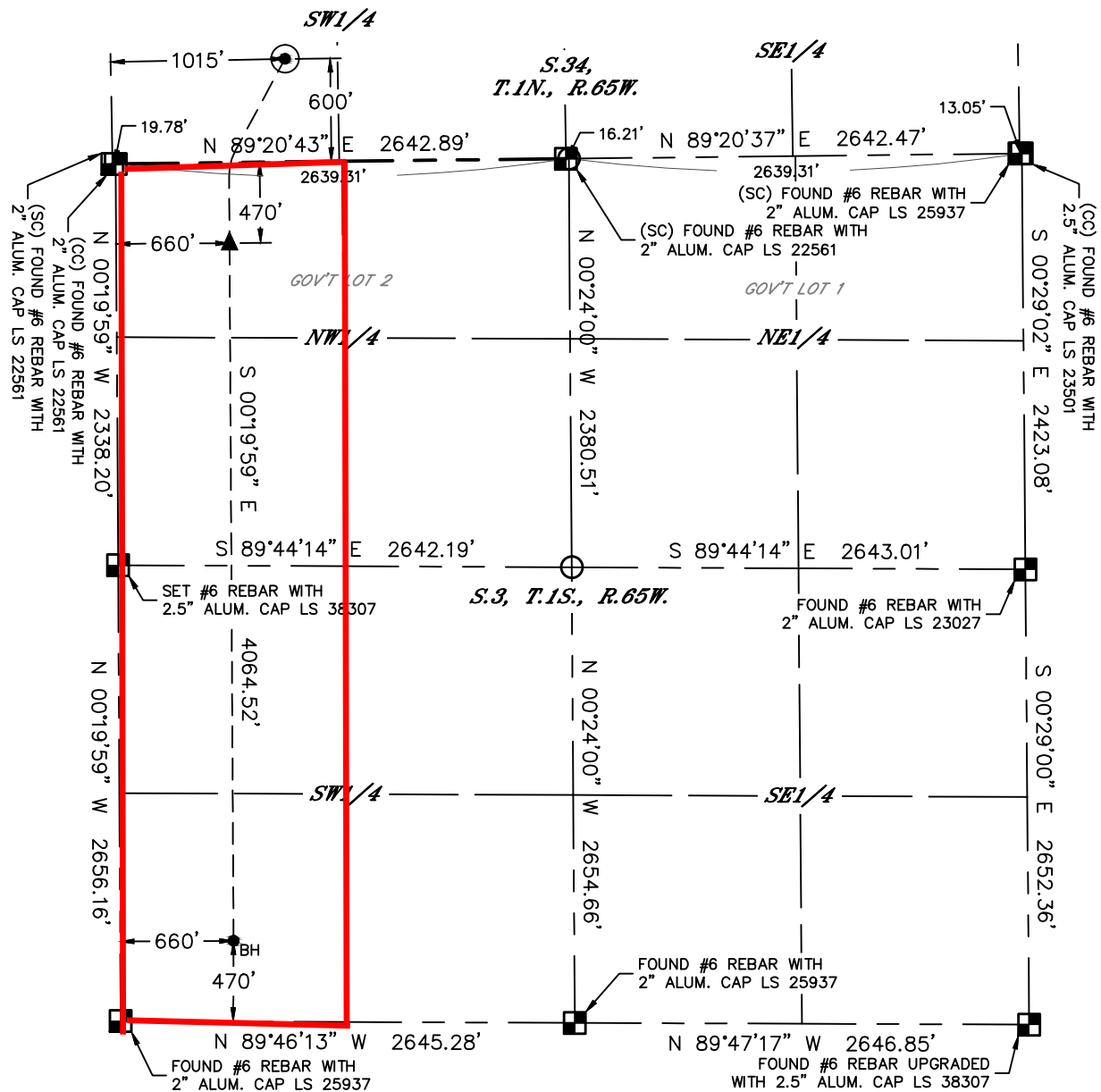


Lat40°, Inc. 6250 W. 10th Street, Unit 2, Greeley, CO 970-515-5294

WELL LOCATION CERTIFICATE

JUDY 34-3-7

SECTION: 34
TOWNSHIP: 1N
RANGE: 65W
6TH. P.M.
WELD COUNTY, CO



LEGEND

- = ALIQUOT MONUMENT AS DESCRIBED
- = CALCULATED POSITION
- ⊙ = SURFACE HOLE LOCATION (SHL)
- ▲ = ENTRY POINT LOCATION (EP)
- = BOTTOM HOLE LOCATION (BHL)
- ⊕ = EXISTING WELL
- ⊖ = ABANDONED WELL



SHEET 2 OF 2

Kyle E. Rutz—On behalf of Lat40, Inc.
Colorado Licensed Professional Land Surveyor No. 38307
DATE: 8/4/2016
PROJECT#: 2016079