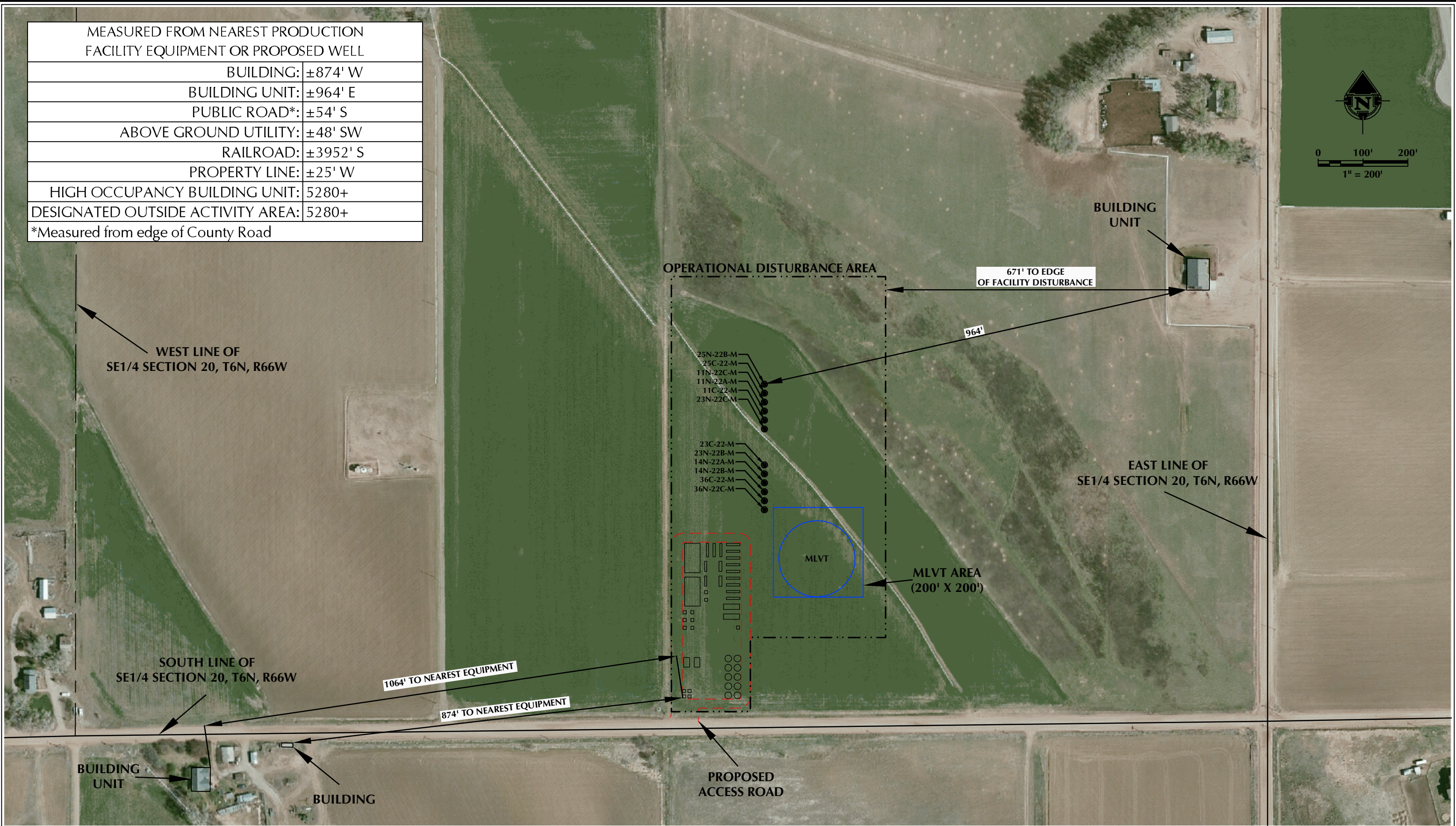


MEASURED FROM NEAREST PRODUCTION FACILITY EQUIPMENT OR PROPOSED WELL	
BUILDING:	±874' W
BUILDING UNIT:	±964' E
PUBLIC ROAD*:	±54' S
ABOVE GROUND UTILITY:	±48' SW
RAILROAD:	±3952' S
PROPERTY LINE:	±25' W
HIGH OCCUPANCY BUILDING UNIT:	5280+
DESIGNATED OUTSIDE ACTIVITY AREA:	5280+
*Measured from edge of County Road	



**NOTES:**  
1. EQUIPMENT PLACEMENT IS APPROXIMATE AND SUBJECT TO MINOR MODIFICATION DUE TO SPECIFIC CIRCUMSTANCES.

**DATA SOURCES:**  
- AERIAL COURTESY OF ESRI, INC.



**609**  
CONSULTING, LLC

**LOVELAND OFFICE**  
1635 Foxtrail Drive, Suite 204  
Loveland, Colorado 80538  
Phone 970-776-4331

**SHERIDAN OFFICE**  
1095 Saberton Avenue  
Sheridan, Wyoming 82801  
Phone 307-674-0609



**SYNERGY**  
RESOURCES CORPORATION

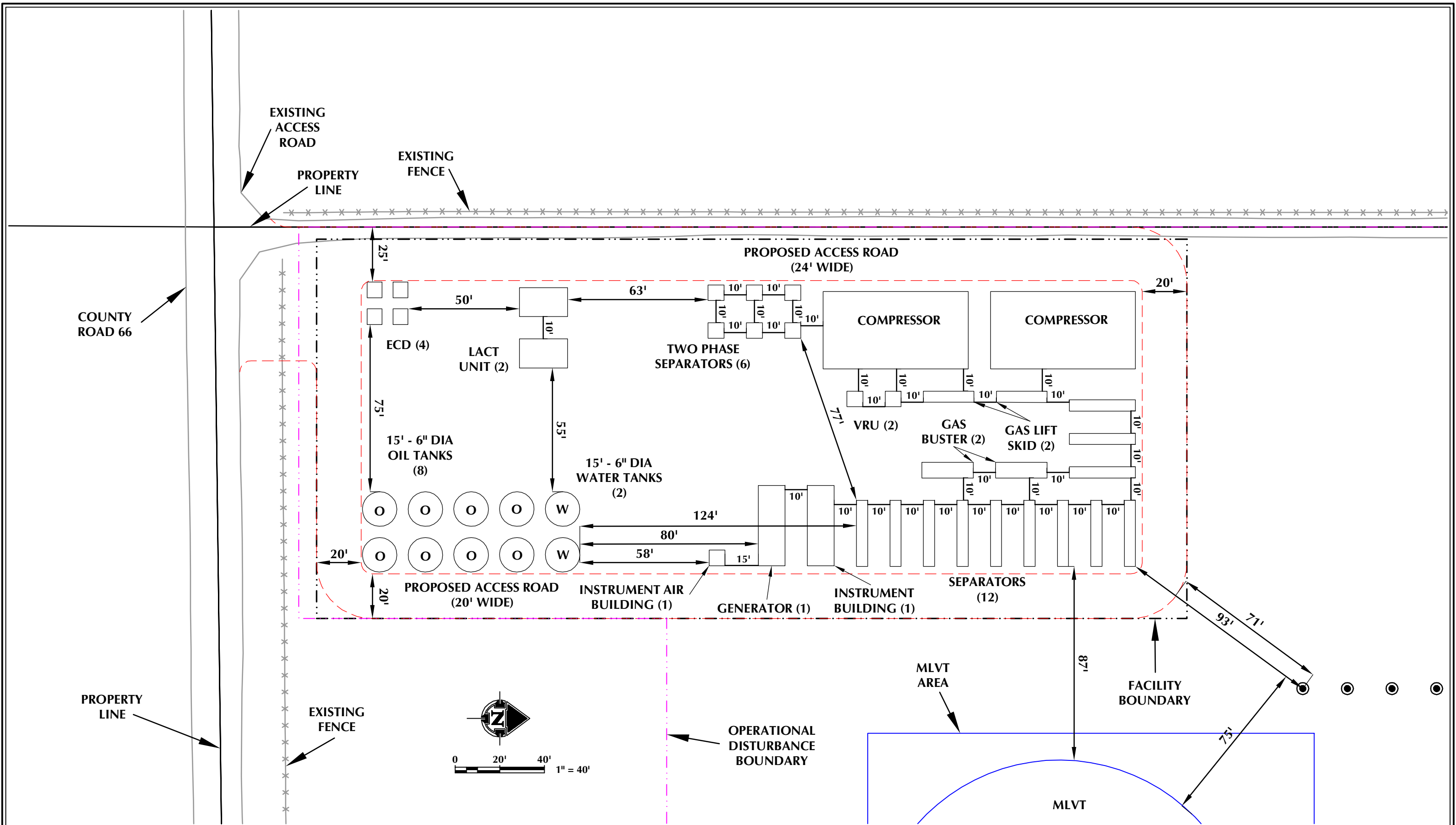
1625 Broadway, Suite 300  
Denver, Colorado 80202

SCALE:	1" = 200'
DATE SURVEYED:	7/7/16
DATE:	9/13/16
DRAFTER:	CDJ
REVISED:	2/9/17

**FACILITY LOCATION DRAWING (A)**  
HOOD-DOLES 37-20  
LOCATED IN SECTION 20, T6N, R66W, 6TH P.M.  
WELD COUNTY, COLORADO



K:\SYNERGY RESOURCES\2016\_80\_HOOD\_DOLES\_T6N\_R66W\_SEC\_20\DWG\GDSU\_48 & 49.dwg 2/9/2017 10:07:17 AM jake



<p><b>NOTES:</b></p> <p>1. EQUIPMENT PLACEMENT IS APPROXIMATE AND SUBJECT TO MINOR MODIFICATION DUE TO SPECIFIC CIRCUMSTANCES.</p>		<div data-bbox="1305 1764 1460 1935"></div> <p><b>LOVELAND OFFICE</b> 1635 Foxtrail Drive, Suite 204 Loveland, Colorado 80538 Phone 970-776-4331</p> <p><b>SHERIDAN OFFICE</b> 1095 Saberton Avenue Sheridan, Wyoming 82801 Phone 307-674-0609</p> <p><b>CONSULTING, LLC</b></p>	<div data-bbox="1693 1774 2004 1844"></div> <p><b>SYNERGY</b> RESOURCES CORPORATION</p> <p>1625 Broadway, Suite 300 Denver, Colorado 80202</p>	<table border="0"><tr><td>SCALE:</td><td>1" = 40'</td></tr><tr><td>DATE SURVEYED:</td><td>7/7/16</td></tr><tr><td>DATE:</td><td>9/8/16</td></tr><tr><td>DRAFTER:</td><td>CDJ</td></tr><tr><td>REVISED:</td><td>2/9/17</td></tr></table>	SCALE:	1" = 40'	DATE SURVEYED:	7/7/16	DATE:	9/8/16	DRAFTER:	CDJ	REVISED:	2/9/17	<p><b>FACILITY LOCATION DRAWING (B)</b></p> <p>HOOD-DOLES 37-20</p> <p>LOCATED IN SECTION 20, T6N, R66W, 6TH P.M.</p> <p>WELD COUNTY, COLORADO</p>
SCALE:	1" = 40'														
DATE SURVEYED:	7/7/16														
DATE:	9/8/16														
DRAFTER:	CDJ														
REVISED:	2/9/17														