

WELL LOCATION CERTIFICATE  
SHARP 23-3-4HN

NAD 83 LATITUDE AND LONGITUDE

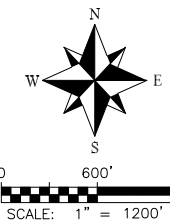
**SHARP 23-3-4HN SURFACE HOLE:**  
 LATITUDE: N39.94407°  
 LONGITUDE: W104.84602°  
 ELEVATION: 5019'  
 FOOTAGE: 265' FSL, 197' FWL  
 PDOP: 1.3  
 QTR/QTR: SW4/SW4

**LANDING POINT:**  
 LATITUDE: N39.94459°  
 LONGITUDE: W104.84908°  
 FOOTAGE: 460' FSL, 660' FEL  
 SEC. 23, T1S, R67W

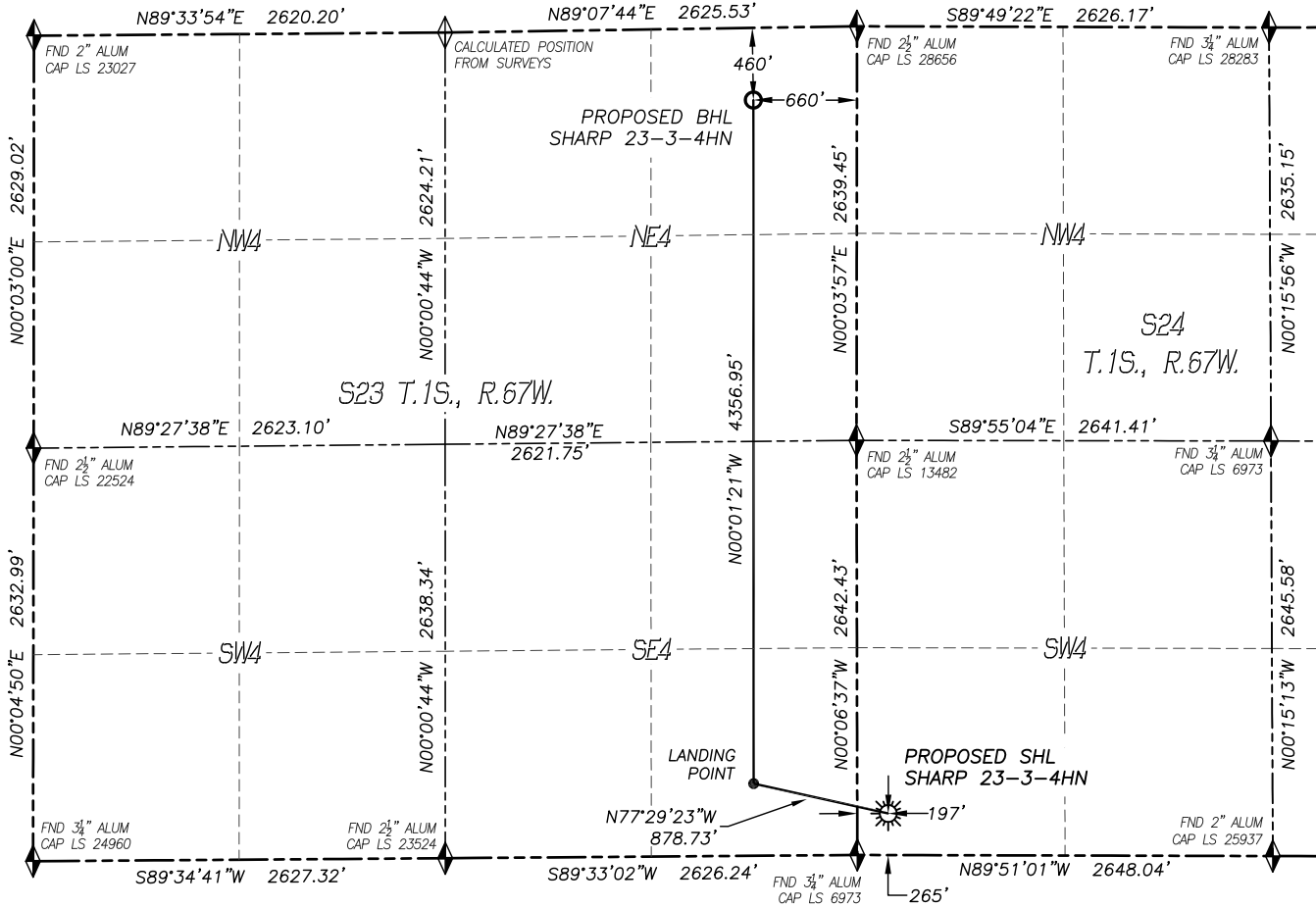
**BOTTOM HOLE:**  
 LATITUDE: N39.95655°  
 LONGITUDE: W104.84908°

NEAREST CULTURAL ITEMS:

BUILDING:	597± SE
BUILDING UNIT:	586± SE
HIGH OCC. BLD. UNIT:	5280'+
DES. OUTSIDE ACTIVITY AREA:	5280'+
PUBLIC ROAD:	254± S
ABOVE GROUND UTILITY:	233± S
RAILROAD:	1784± SE
PROPERTY LINE:	197± W



- LEGEND
- ◆ FOUND MONUMENT AS DESCRIBED
  - ◇ CALCULATED POSITION
  - ☀ PROPOSED WELL
  - BOTTOM HOLE

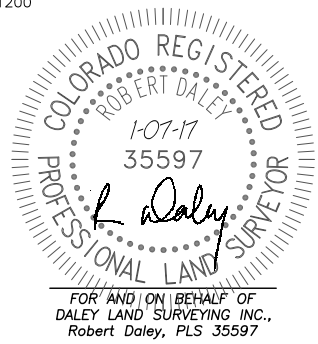


NOTES:

- 1) BEARINGS FOR THIS MAP ARE ASSUMED AND BASED UPON GPS OBSERVATIONS MADE BETWEEN MONUMENTS LOCATED AT THE SOUTHWEST CORNER AND SOUTH QUARTER CORNER OF SECTION 24, TOWNSHIP 1 SOUTH, RANGE 67 WEST OF THE 6TH PRINCIPAL MERIDIAN, ADAMS COUNTY, COLORADO.
- 2) HORIZONTAL DATUM IS NAD83.
- 3) VERTICAL DATUM IS NAVD88 AND ORIGINATES FROM THE LOCAL C.O.R.S. NETWORK, UTILIZING THE GEOID12A MODEL.
- 4) SEE LOCATION DRAWING FOR VISIBLE IMPROVEMENTS WITHIN 500' OF PROPOSED DISTURBED AREA.
- 5) SURFACE USE: AGRICULTURAL.
- 6) INST. OPERATOR: SCOTT ESTABROOKS

IN ACCORDANCE WITH A REQUEST FROM WARD PETROLEUM, DALEY LAND SURVEYING, INC. HAS DETERMINED THE SURFACE LOCATION OF THE SHARP 23-3-4HN WELL TO BE 265' FSL, 197' FWL, AS MEASURED AT NINETY (90) DEGREES FROM THE SECTION LINES OF SECTION 24, TOWNSHIP 1 SOUTH, RANGE 67 WEST, AND THE BOTTOM HOLE LOCATION TO BE 460' FNL, 660' FEL, AS MEASURED AT NINETY (90) DEGREES FROM THE SECTION LINES OF SECTION 23, TOWNSHIP 1 SOUTH, RANGE 67 WEST OF THE 6TH PRINCIPAL MERIDIAN, ADAMS COUNTY, COLORADO.

I HEREBY CERTIFY THAT THIS WELL LOCATION CERTIFICATE WAS PREPARED BY ME OR UNDER MY DIRECT SUPERVISION, THAT THE WORK WAS COMPLETED ON 10/31/16 FOR AND ON BEHALF OF WARD PETROLEUM, AND THAT THIS MAP DOES NOT REPRESENT A BOUNDARY SURVEY, IT IS NOT A LAND SURVEY PLAT OR AN IMPROVEMENT SURVEY PLAT AND IT IS NOT TO BE RELIED UPON FOR THE ESTABLISHMENT OF FENCE, BUILDING OR OTHER FUTURE IMPROVEMENT LINES.



\\Survey\1304001\Drawings\Sharp 23-3-4HN.dwg