

N

LEGEND:

●

= WELLHEAD LOCATION.

○

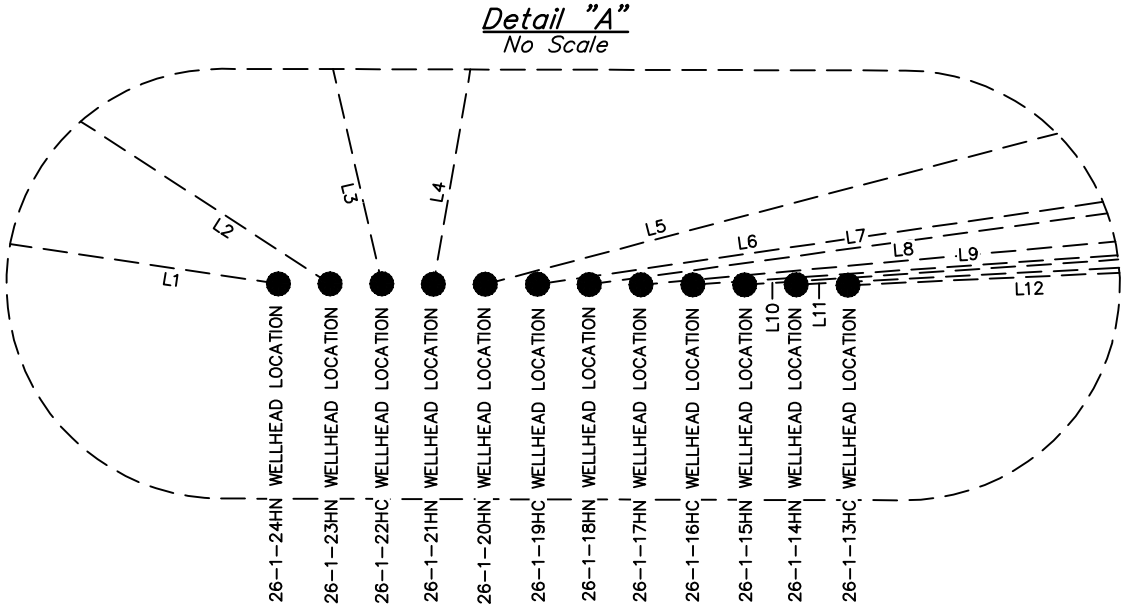
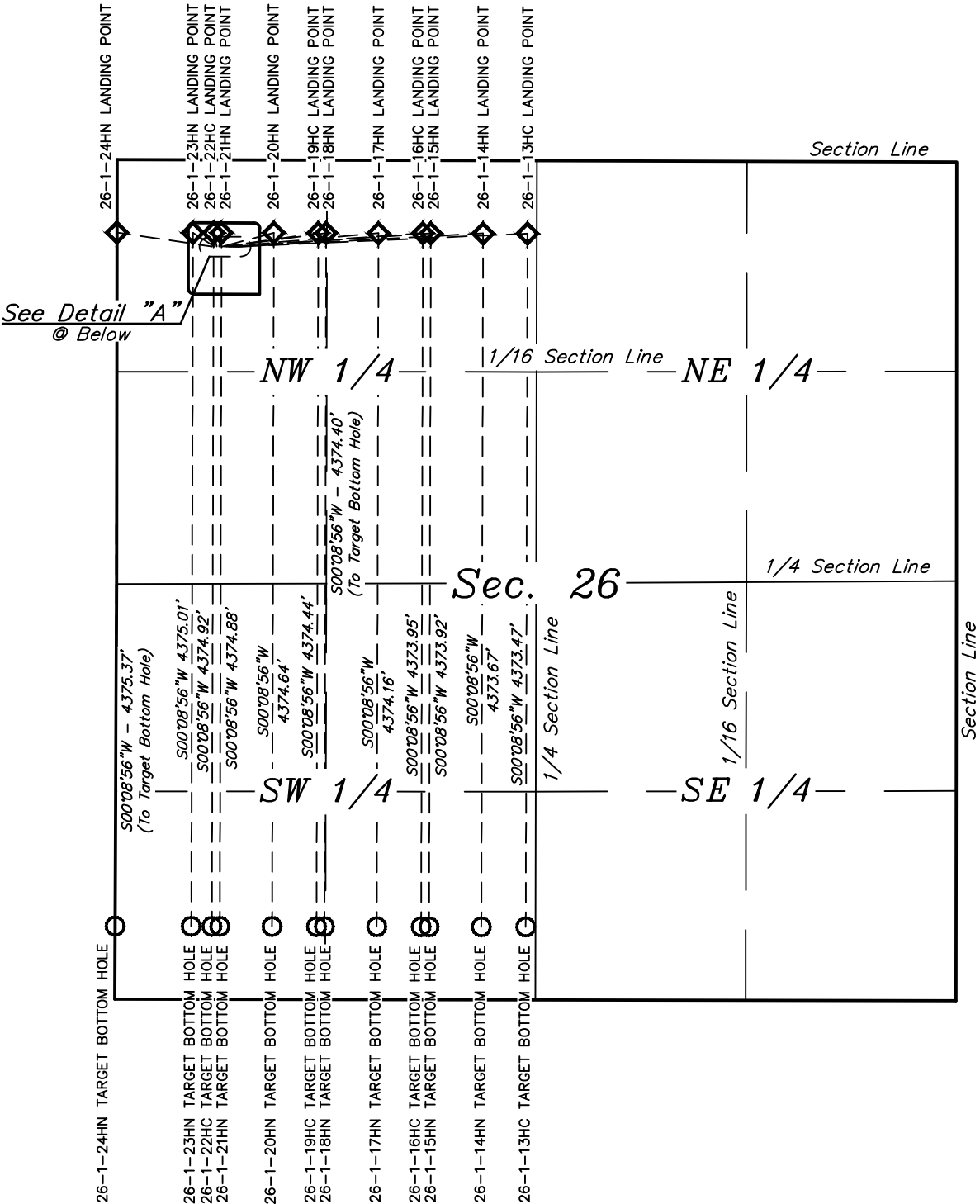
= TARGET BOTTOM HOLE.

◇

= LANDING POINT.



LINE TABLE		
LINE	DIRECTION	LENGTH
L1	N81°31'20"W	606.61'
L2	N56°48'30"W	161.26'
L3	N12°45'49"W	90.16'
L4	N09°45'04"E	89.04'
L5	N75°13'10"E	341.35'
L6	N81°45'34"E	601.37'
L7	N82°12'40"E	635.91'
L8	N84°50'23"E	948.88'
L9	N85°59'36"E	1213.03'
L10	N86°06'42"E	1247.89'
L11	N86°55'40"E	1562.32'
L12	N87°23'45"E	1827.09'



REV: 1 01-31-17 M.D. (SHL AND PAD CHANGE)

NOTES:

WARD PETROLEUM CORPORATION

RITCHEY PAD
NW 1/4 NW 1/4, SECTION 26, T1N, R66W, 6th P.M.
WELD COUNTY, COLORADO



UELS, LLC
Corporate Office * 85 South 200 East
Vernal, UT 84078 * (435) 789-1017

SURVEYED BY	GREG WEIMER, C.M.	01-04-17	SCALE
DRAWN BY	K.B.	01-10-17	1" = 1000'
MULTI-WELL PLAN		FIGURE #5	