

# LEGEND:

 PROPOSED LOCATION



## WARD PETROLEUM CORPORATION

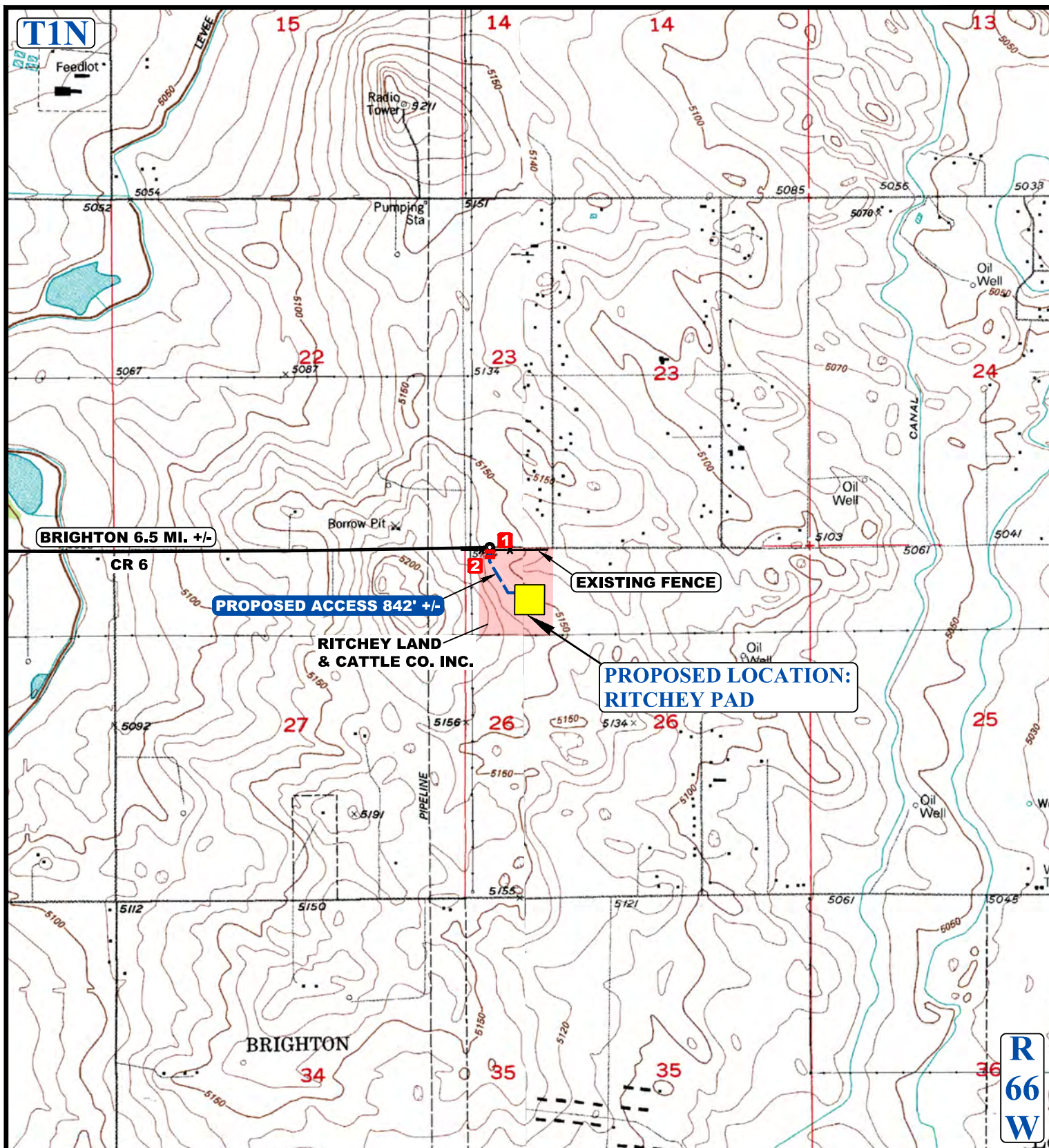
RITCHEY PAD  
 NE 1/4 NE 1/4, SECTION 26, T1N, R66W, 6th P.M.  
 WELD COUNTY, COLORADO



UELS, LLC  
 Corporate Office \* 85 South 200 East  
 Vernal, UT 84078 \* (435) 789-1017

SURVEYED BY	G.W., C.M.	01-04-17	SCALE
DRAWN BY	J.L.G.	01-10-17	1 : 100,000
ACCESS ROAD MAP			TOPO A





NOTE: PARCEL DATA SHOWN HAS BEEN OBTAINED FROM VARIOUS SOURCES AND SHOULD BE USED FOR MAPPING, GRAPHIC AND PLANNING PURPOSES ONLY. NO WARRANTY IS MADE BY UINTAH ENGINEERING AND LAND SURVEYING (UELS) FOR ACCURACY OF THE PARCEL DATA.

#### LEGEND:

- EXISTING ROAD
- PROPOSED ROAD
- 1 INSTALL 18" CULVERT
- 2 INSTALL CATTLE GUARD



**UELS, LLC**  
Corporate Office \* 85 South 200 East  
Vernal, UT 84078 \* (435) 789-1017



#### WARD PETROLEUM CORPORATION

**RITCHEY PAD**  
NE 1/4 NE 1/4, SECTION 26, T1N, R66W, 6th P.M.  
WELD COUNTY, COLORADO

SURVEYED BY	G.W., C.M.	01-04-17	SCALE
DRAWN BY	J.L.G.	01-10-17	1 : 24,000
<b>ACCESS ROAD MAP</b>			<b>TOPO B</b>