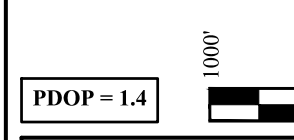
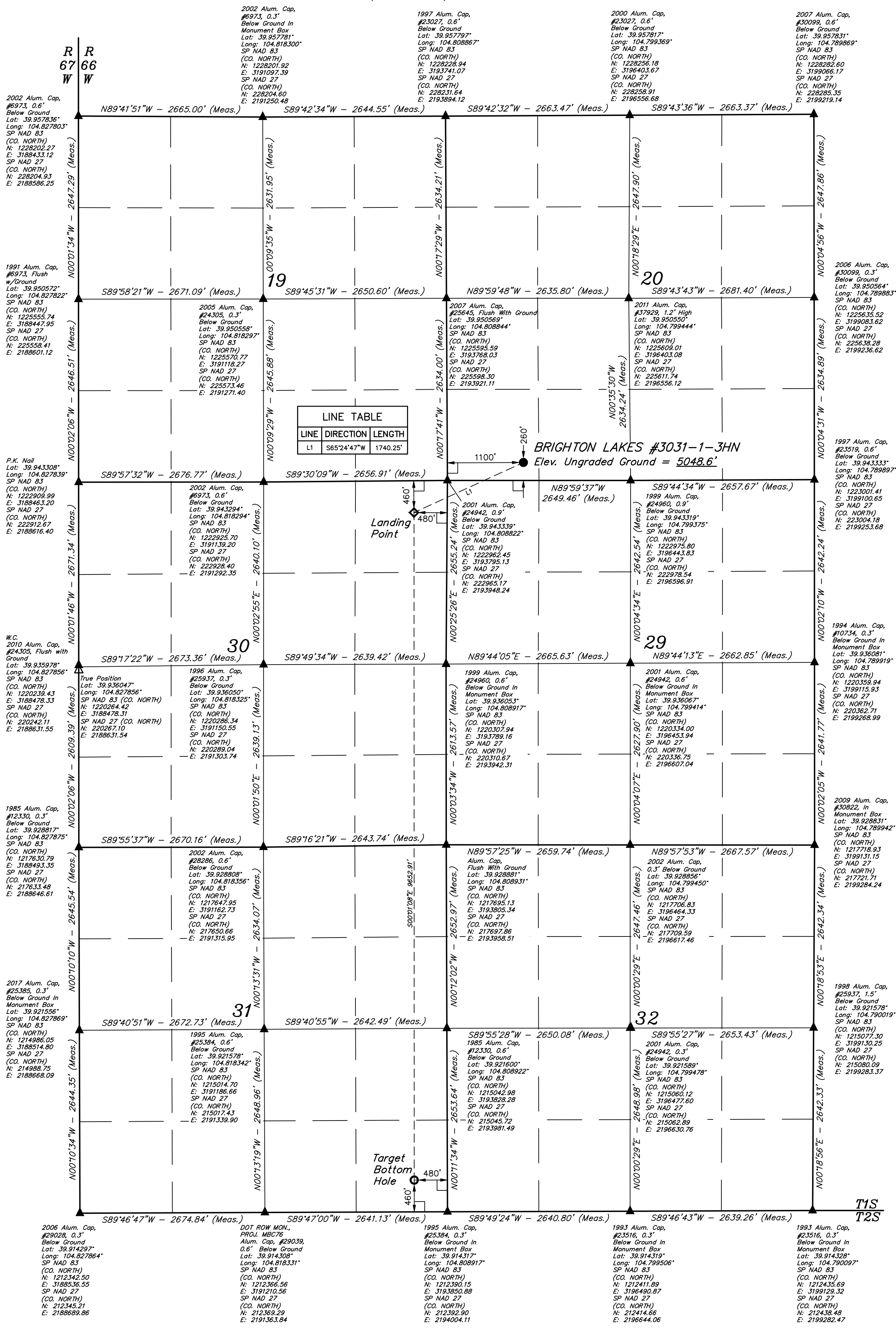


- LEGEND:**
- ◻ = 90° SYMBOL
  - = PROPOSED WELLHEAD
  - = TARGET BOTTOM HOLE
  - ◆ = LANDING POINT
  - ◊ = SECTION CORNERS LOCATED, (NAD 83)
  - △ = SECTION CORNERS RE-ESTABLISHED, (Not Set on Ground.) (NAD 83)

T1S, R66W, 6th P.M.



NAD 83 (SURFACE LOCATION)	NAD 83 (LANDING POINT)	NAD 83 (TARGET BOTTOM HOLE)
LATITUDE = 39°56'38.56" (39.944044)	LATITUDE = 39°56'31.45" (39.942069)	LATITUDE = 39°54'56.08" (39.915578)
LONGITUDE = 104°48'17.64" (104.804900)	LONGITUDE = 104°48'37.98" (104.810550)	LONGITUDE = 104°48'38.26" (104.810628)
NAD 27 (SURFACE LOCATION)	NAD 27 (LANDING POINT)	NAD 27 (TARGET BOTTOM HOLE)
LATITUDE = 39°56'38.62" (39.944061)	LATITUDE = 39°56'31.51" (39.942086)	LATITUDE = 39°54'56.13" (39.915592)
LONGITUDE = 104°48'15.74" (104.804372)	LONGITUDE = 104°48'36.08" (104.810022)	LONGITUDE = 104°48'36.36" (104.810100)
STATE PLANE NAD 83 (CO. NORTH)	STATE PLANE NAD 83 (CO. NORTH)	STATE PLANE NAD 83 (CO. NORTH)
N: 1223227.89 E: 3194892.49	N: 1222495.87 E: 3193314.21	N: 1212845.72 E: 3193367.11
STATE PLANE NAD 27 (CO. NORTH)	STATE PLANE NAD 27 (CO. NORTH)	STATE PLANE NAD 27 (CO. NORTH)
N: 223230.62 E: 2195045.59	N: 222498.59 E: 2193467.34	N: 212848.47 E: 2193520.35

**BASIS OF BEARINGS**  
BASIS OF BEARINGS IS A G.P.S. OBSERVATION

**BASIS OF ELEVATION**  
USGS COOPERATIVE BASE NETWORK CONTROL STATION, DESIGNATION "JR 53 5026". NGS DATA SHEET LISTS THE NAVD 88 ELEVATION AS BEING 5028 FEET.

**UELS, LLC**  
Corporate Office • 85 South 200 East  
Vernal, UT 84078 • (435) 789-1017

**2006 Alum. Cap. #29028, 0.3' Below Ground**  
Lat: 39.914297° Long: 104.827864° SP NAD 83 (CO. NORTH) N: 1212342.50 E: 3188536.55 SP NAD 27 (CO. NORTH) N: 212345.21 E: 2188639.86

**DOT ROW MON. PROJ. MNC76 Alum. Cap. #29039, 0.6' Below Ground**  
Lat: 39.914308° Long: 104.818331° SP NAD 83 (CO. NORTH) N: 1212366.56 E: 3191210.56 SP NAD 27 (CO. NORTH) N: 212369.29 E: 2191363.84

**1995 Alum. Cap. #25384, 0.3' Below Ground**  
Lat: 39.914317° Long: 104.808917° SP NAD 83 (CO. NORTH) N: 1212390.15 E: 3193850.88 SP NAD 27 (CO. NORTH) N: 212392.90 E: 2194004.11

**1993 Alum. Cap. #23516, 0.3' Below Ground**  
Lat: 39.914319° Long: 104.799506° SP NAD 83 (CO. NORTH) N: 1212411.89 E: 3196490.87 SP NAD 27 (CO. NORTH) N: 212416.66 E: 2196644.06

**2006 Alum. Cap. #29028, 0.3' Below Ground**  
Lat: 39.914297° Long: 104.827864° SP NAD 83 (CO. NORTH) N: 1212342.50 E: 3188536.55 SP NAD 27 (CO. NORTH) N: 212345.21 E: 2188639.86

**2007 Alum. Cap. #23027, 0.6' Below Ground**  
Lat: 39.957797° Long: 104.808867° SP NAD 83 (CO. NORTH) N: 1228228.94 E: 3193741.07 SP NAD 27 (CO. NORTH) N: 228231.64 E: 2193894.12

**2000 Alum. Cap. #23027, 0.6' Below Ground**  
Lat: 39.957817° Long: 104.799369° SP NAD 83 (CO. NORTH) N: 1228256.18 E: 3196403.67 SP NAD 27 (CO. NORTH) N: 228258.91 E: 2196556.68

**2007 Alum. Cap. #30099, 0.6' Below Ground**  
Lat: 39.957831° Long: 104.789869° SP NAD 83 (CO. NORTH) N: 1228282.60 E: 3199086.17 SP NAD 27 (CO. NORTH) N: 228285.35 E: 2199219.14

**2006 Alum. Cap. #29028, 0.3' Below Ground**  
Lat: 39.914297° Long: 104.827864° SP NAD 83 (CO. NORTH) N: 1212342.50 E: 3188536.55 SP NAD 27 (CO. NORTH) N: 212345.21 E: 2188639.86

**2007 Alum. Cap. #23027, 0.6' Below Ground**  
Lat: 39.957797° Long: 104.808867° SP NAD 83 (CO. NORTH) N: 1228228.94 E: 3193741.07 SP NAD 27 (CO. NORTH) N: 228231.64 E: 2193894.12

**2000 Alum. Cap. #23027, 0.6' Below Ground**  
Lat: 39.957817° Long: 104.799369° SP NAD 83 (CO. NORTH) N: 1228256.18 E: 3196403.67 SP NAD 27 (CO. NORTH) N: 228258.91 E: 2196556.68

**2007 Alum. Cap. #30099, 0.6' Below Ground**  
Lat: 39.957831° Long: 104.789869° SP NAD 83 (CO. NORTH) N: 1228282.60 E: 3199086.17 SP NAD 27 (CO. NORTH) N: 228285.35 E: 2199219.14

**2006 Alum. Cap. #29028, 0.3' Below Ground**  
Lat: 39.914297° Long: 104.827864° SP NAD 83 (CO. NORTH) N: 1212342.50 E: 3188536.55 SP NAD 27 (CO. NORTH) N: 212345.21 E: 2188639.86

**2007 Alum. Cap. #23027, 0.6' Below Ground**  
Lat: 39.957797° Long: 104.808867° SP NAD 83 (CO. NORTH) N: 1228228.94 E: 3193741.07 SP NAD 27 (CO. NORTH) N: 228231.64 E: 2193894.12

**2000 Alum. Cap. #23027, 0.6' Below Ground**  
Lat: 39.957817° Long: 104.799369° SP NAD 83 (CO. NORTH) N: 1228256.18 E: 3196403.67 SP NAD 27 (CO. NORTH) N: 228258.91 E: 2196556.68

**2007 Alum. Cap. #30099, 0.6' Below Ground**  
Lat: 39.957831° Long: 104.789869° SP NAD 83 (CO. NORTH) N: 1228282.60 E: 3199086.17 SP NAD 27 (CO. NORTH) N: 228285.35 E: 2199219.14

**CERTIFICATE OF REGISTRATION**

THIS IS TO CERTIFY THAT THE ABOVE DESCRIBED SURVEY WAS MADE AND THAT THE SAME ARE TRUE AND CORRECT TO THE BEST OF MY KNOWLEDGE AND BELIEF.

**WARD PETROLEUM CORPORATION**  
BRIGHTON LAKES #3031-1-3HN  
SW 1/4 SW 1/4, SECTION 20, T1S, R66W, 6th P.M.  
ADAMS COUNTY, COLORADO

**WELL LOCATION PLAT**