



## **Ursa Operating Company, LLC**

**Rockies Region**

**Monument Ridge B**

**Monument Ridge B 44C-08-07-95**

**Wellbore #1**

**Design: Actual**

## **End of Well Report**

**01 November, 2016**



<b>Company:</b>	Ursa Operating Company, LLC	<b>Local Co-ordinate Reference:</b>	Well Monument Ridge B 44C-08-07-95
<b>Project:</b>	Rockies Region	<b>TVD Reference:</b>	Monument Ridge B 44C-08-07-95 @ 5718.8usft (PLAN)
<b>Site:</b>	Monument Ridge B	<b>MD Reference:</b>	Monument Ridge B 44C-08-07-95 @ 5718.8usft (PLAN)
<b>Well:</b>	Monument Ridge B 44C-08-07-95	<b>North Reference:</b>	True
<b>Wellbore:</b>	Wellbore #1	<b>Survey Calculation Method:</b>	Minimum Curvature
<b>Design:</b>	Actual	<b>Database:</b>	EDM 5000.1 Single User Db

Project		Rockies Region	
Map System:	US State Plane 1983	System Datum:	Mean Sea Level
Geo Datum:	North American Datum 1983		
Map Zone:	Colorado Central Zone		

Site	Monument Ridge B					
Site Position:		Northing:	1,596,716.56	usft	Latitude:	39.444583700°N
From:	Lat/Long	Easting:	2,287,433.43	usft	Longitude:	108.023518100°W
Position Uncertainty:	0.0	Slot Radius:	13-3/16	"	Grid Convergence:	-1.59 °

Well		Monument Ridge B 44C-08-07-95, SHL: 39.447750475 -108.012276385				
Well Position	+N/-S	0.0 usft	Northing:	1,597,781.58 usft	Latitude:	39.447750463°N
	+E/-W	0.0 usft	Easting:	2,290,638.84 usft	Longitude:	108.012276385°W
Position Uncertainty		0.0 usft	Wellhead Elevation:	5,718.8 usft	Ground Level:	5,701.8 usft

Wellbore	Wellbore #1				
Magnetics	Model Name	Sample Date	Declination (°)	Dip Angle (°)	Field Strength (nT)
	IGRF2015	11/1/2016	9.77	65.56	51,572

Design		Actual			
Audit Notes:					
Version:	1.0	Phase:	ACTUAL	Tie On Depth:	0.0
Vertical Section:	Depth From (TVD) (usft)		+N/-S (usft)	+E/-W (usft)	Direction (°)
	0.0		0.0	0.0	229.82

Survey Program		Date	11/1/2016		
From (usft)	To (usft)	Survey (Wellbore)	Tool Name	Description	
112.0	6,975.0	Actual (Wellbore #1)	MWD	MWD - Standard	

<b>Company:</b>	Ursa Operating Company, LLC	<b>Local Co-ordinate Reference:</b>	Well Monument Ridge B 44C-08-07-95
<b>Project:</b>	Rockies Region	<b>TVD Reference:</b>	Monument Ridge B 44C-08-07-95 @ 5718.8usft (PLAN
<b>Site:</b>	Monument Ridge B	<b>MD Reference:</b>	Monument Ridge B 44C-08-07-95 @ 5718.8usft (PLAN
<b>Well:</b>	Monument Ridge B 44C-08-07-95	<b>North Reference:</b>	True
<b>Wellbore:</b>	Wellbore #1	<b>Survey Calculation Method:</b>	Minimum Curvature
<b>Design:</b>	Actual	<b>Database:</b>	EDM 5000.1 Single User Db

Survey										
MD (usft)	Inc (°)	Azi (azimuth) (°)	TVD (usft)	V. Sec (usft)	N/S (usft)	E/W (usft)	DLeg (°/100usft)	Build (°/100usft)	Turn (°/100usft)	
0.0	0.00	0.00	0.0	0.0	0.0	0.0	0.00	0.00	0.00	
112.0	0.44	244.41	112.0	0.4	-0.2	-0.4	0.39	0.39	0.00	
142.0	0.54	243.77	142.0	0.7	-0.3	-0.6	0.33	0.33	-2.13	
173.0	0.66	255.75	173.0	1.0	-0.4	-0.9	0.56	0.39	38.65	
203.0	0.48	284.93	203.0	1.2	-0.4	-1.2	1.12	-0.60	97.27	
232.0	0.75	322.90	232.0	1.3	-0.2	-1.4	1.64	0.93	130.93	
262.0	0.73	335.93	262.0	1.2	0.1	-1.6	0.56	-0.07	43.43	
293.0	0.76	12.87	293.0	1.0	0.5	-1.7	1.53	0.10	119.16	
323.0	0.70	40.16	323.0	0.6	0.8	-1.5	1.16	-0.20	90.97	
354.0	0.88	55.80	354.0	0.2	1.1	-1.2	0.90	0.58	50.45	
384.0	0.97	65.86	384.0	-0.3	1.3	-0.8	0.62	0.30	33.53	
415.0	1.05	75.40	415.0	-0.8	1.5	-0.3	0.60	0.26	30.77	
445.0	1.10	74.74	445.0	-1.3	1.6	0.3	0.17	0.17	-2.20	
476.0	1.27	78.83	476.0	-1.9	1.8	0.9	0.61	0.55	13.19	
507.0	1.27	75.27	507.0	-2.5	1.9	1.6	0.25	0.00	-11.48	
537.0	1.49	74.65	536.9	-3.1	2.1	2.3	0.74	0.73	-2.07	
568.0	1.49	80.94	567.9	-3.8	2.3	3.1	0.53	0.00	20.29	
599.0	1.41	76.46	598.9	-4.5	2.5	3.8	0.45	-0.26	-14.45	
629.0	0.70	85.60	628.9	-5.0	2.6	4.4	2.42	-2.37	30.47	
660.0	0.31	100.41	659.9	-5.2	2.6	4.6	1.32	-1.26	47.77	
690.0	0.26	127.30	689.9	-5.3	2.5	4.8	0.47	-0.17	89.63	
720.0	0.13	153.36	719.9	-5.3	2.4	4.9	0.51	-0.43	86.87	
751.0	0.00	276.05	750.9	-5.3	2.4	4.9	0.42	-0.42	0.00	
781.0	0.28	209.79	780.9	-5.2	2.3	4.8	0.93	0.93	0.00	
812.0	1.04	242.81	811.9	-4.9	2.1	4.5	2.64	2.45	106.52	
842.0	1.76	241.43	841.9	-4.1	1.8	3.9	2.40	2.40	-4.60	
884.0	3.15	237.46	883.9	-2.4	0.9	2.4	3.33	3.31	-9.45	

<b>Company:</b>	Ursa Operating Company, LLC	<b>Local Co-ordinate Reference:</b>	Well Monument Ridge B 44C-08-07-95
<b>Project:</b>	Rockies Region	<b>TVD Reference:</b>	Monument Ridge B 44C-08-07-95 @ 5718.8usft (PLAN
<b>Site:</b>	Monument Ridge B	<b>MD Reference:</b>	Monument Ridge B 44C-08-07-95 @ 5718.8usft (PLAN
<b>Well:</b>	Monument Ridge B 44C-08-07-95	<b>North Reference:</b>	True
<b>Wellbore:</b>	Wellbore #1	<b>Survey Calculation Method:</b>	Minimum Curvature
<b>Design:</b>	Actual	<b>Database:</b>	EDM 5000.1 Single User Db

Survey										
MD (usft)	Inc (°)	Azi (azimuth) (°)	TVD (usft)	V. Sec (usft)	N/S (usft)	E/W (usft)	DLeg (°/100usft)	Build (°/100usft)	Turn (°/100usft)	
927.0	4.49	233.69	926.8	0.5	-0.8	0.0	3.17	3.12	-8.77	
970.0	5.79	230.86	969.6	4.3	-3.1	-3.0	3.08	3.02	-6.58	
1,013.0	7.08	231.49	1,012.3	9.2	-6.2	-6.8	3.00	3.00	1.47	
1,055.0	8.60	232.09	1,053.9	14.9	-9.7	-11.3	3.62	3.62	1.43	
1,098.0	9.62	231.41	1,096.4	21.7	-13.9	-16.6	2.39	2.37	-1.58	
1,141.0	9.80	232.42	1,138.8	28.9	-18.4	-22.3	0.58	0.42	2.35	
1,184.0	9.67	232.77	1,181.2	36.2	-22.8	-28.1	0.33	-0.30	0.81	
1,227.0	10.24	233.25	1,223.5	43.6	-27.3	-34.1	1.34	1.33	1.12	
1,269.0	10.46	229.91	1,264.8	51.2	-32.0	-40.0	1.52	0.52	-7.95	
1,312.0	10.81	227.32	1,307.1	59.1	-37.2	-45.9	1.38	0.81	-6.02	
1,355.0	11.21	226.57	1,349.3	67.3	-42.8	-51.9	0.99	0.93	-1.74	
1,397.0	11.47	227.98	1,390.5	75.5	-48.4	-58.0	0.90	0.62	3.36	
1,440.0	11.60	228.42	1,432.6	84.1	-54.1	-64.4	0.37	0.30	1.02	
1,483.0	11.78	227.28	1,474.7	92.8	-60.0	-70.9	0.68	0.42	-2.65	
1,526.0	11.91	227.76	1,516.8	101.7	-66.0	-77.4	0.38	0.30	1.12	
1,568.0	11.74	231.48	1,557.9	110.3	-71.5	-83.9	1.86	-0.40	8.86	
1,611.0	12.13	231.71	1,600.0	119.2	-77.1	-90.9	0.91	0.91	0.53	
1,654.0	12.44	230.88	1,642.0	128.3	-82.8	-98.0	0.83	0.72	-1.93	
1,670.0	12.52	229.65	1,657.6	131.8	-85.0	-100.7	1.73	0.50	-7.69	
Last PZD Surface Survey										
1,744.0	12.92	230.48	1,729.8	148.0	-95.4	-113.2	0.59	0.54	1.12	
1,829.0	12.17	231.93	1,812.8	166.5	-107.0	-127.6	0.96	-0.88	1.71	
1,915.0	11.69	230.66	1,896.9	184.3	-118.1	-141.4	0.64	-0.56	-1.48	
2,000.0	10.99	229.08	1,980.3	201.0	-128.9	-154.2	0.90	-0.82	-1.86	
2,086.0	10.77	234.71	2,064.7	217.2	-138.9	-167.0	1.26	-0.26	6.55	
2,171.0	10.55	232.86	2,148.2	232.9	-148.2	-179.7	0.48	-0.26	-2.18	
2,256.0	10.15	231.76	2,231.9	248.1	-157.5	-191.7	0.52	-0.47	-1.29	

<b>Company:</b>	Ursa Operating Company, LLC	<b>Local Co-ordinate Reference:</b>	Well Monument Ridge B 44C-08-07-95
<b>Project:</b>	Rockies Region	<b>TVD Reference:</b>	Monument Ridge B 44C-08-07-95 @ 5718.8usft (PLAN
<b>Site:</b>	Monument Ridge B	<b>MD Reference:</b>	Monument Ridge B 44C-08-07-95 @ 5718.8usft (PLAN
<b>Well:</b>	Monument Ridge B 44C-08-07-95	<b>North Reference:</b>	True
<b>Wellbore:</b>	Wellbore #1	<b>Survey Calculation Method:</b>	Minimum Curvature
<b>Design:</b>	Actual	<b>Database:</b>	EDM 5000.1 Single User Db

Survey										
MD (usft)	Inc (°)	Azi (azimuth) (°)	TVD (usft)	V. Sec (usft)	N/S (usft)	E/W (usft)	DLeg (°/100usft)	Build (°/100usft)	Turn (°/100usft)	
2,342.0	9.49	230.35	2,316.6	262.8	-166.7	-203.2	0.82	-0.77	-1.64	
2,427.0	8.72	230.33	2,400.5	276.2	-175.3	-213.5	0.91	-0.91	-0.02	
2,513.0	9.70	232.71	2,485.4	290.0	-183.9	-224.3	1.22	1.14	2.77	
2,598.0	10.81	234.09	2,569.1	305.1	-192.9	-236.4	1.34	1.31	1.62	
2,683.0	10.22	234.19	2,652.6	320.6	-202.0	-249.0	0.69	-0.69	0.12	
2,768.0	11.65	232.37	2,736.1	336.7	-211.6	-261.9	1.73	1.68	-2.14	
2,854.0	11.07	231.85	2,820.4	353.6	-222.0	-275.3	0.68	-0.67	-0.60	
2,939.0	10.20	231.01	2,903.9	369.3	-231.8	-287.6	1.04	-1.02	-0.99	
3,024.0	11.69	232.72	2,987.4	385.4	-241.8	-300.3	1.79	1.75	2.01	
3,110.0	11.34	231.54	3,071.7	402.5	-252.3	-313.8	0.49	-0.41	-1.37	
3,195.0	10.72	232.20	3,155.1	418.8	-262.3	-326.6	0.74	-0.73	0.78	
3,280.0	10.11	231.67	3,238.7	434.2	-271.8	-338.7	0.73	-0.72	-0.62	
3,366.0	9.80	231.19	3,323.4	449.0	-281.1	-350.3	0.37	-0.36	-0.56	
3,451.0	8.96	229.91	3,407.3	462.9	-289.9	-361.0	1.02	-0.99	-1.51	
3,536.0	10.55	231.01	3,491.0	477.3	-299.0	-372.1	1.88	1.87	1.29	
3,622.0	10.06	231.45	3,575.6	492.6	-308.7	-384.1	0.58	-0.57	0.51	
3,707.0	11.07	229.43	3,659.2	508.2	-318.6	-396.1	1.27	1.19	-2.38	
3,792.0	10.06	228.77	3,742.8	523.8	-328.8	-407.9	1.20	-1.19	-0.78	
3,878.0	10.63	231.67	3,827.4	539.2	-338.7	-419.8	0.90	0.66	3.37	
3,963.0	9.57	230.79	3,911.0	554.1	-348.0	-431.4	1.26	-1.25	-1.04	
4,049.0	10.33	231.89	3,995.7	569.0	-357.3	-443.0	0.91	0.88	1.28	
4,134.0	10.02	230.75	4,079.4	584.0	-366.7	-454.8	0.43	-0.36	-1.34	
4,219.0	8.92	232.59	4,163.2	598.0	-375.3	-465.7	1.34	-1.29	2.16	
4,304.0	8.09	231.93	4,247.3	610.5	-383.0	-475.7	0.98	-0.98	-0.78	
4,390.0	7.12	233.98	4,332.6	621.9	-389.9	-484.7	1.17	-1.13	2.38	
4,475.0	6.33	235.14	4,417.0	631.8	-395.7	-492.8	0.94	-0.93	1.36	
4,561.0	5.41	232.64	4,502.5	640.6	-400.8	-500.0	1.11	-1.07	-2.91	

<b>Company:</b>	Ursa Operating Company, LLC	<b>Local Co-ordinate Reference:</b>	Well Monument Ridge B 44C-08-07-95
<b>Project:</b>	Rockies Region	<b>TVD Reference:</b>	Monument Ridge B 44C-08-07-95 @ 5718.8usft (PLAN
<b>Site:</b>	Monument Ridge B	<b>MD Reference:</b>	Monument Ridge B 44C-08-07-95 @ 5718.8usft (PLAN
<b>Well:</b>	Monument Ridge B 44C-08-07-95	<b>North Reference:</b>	True
<b>Wellbore:</b>	Wellbore #1	<b>Survey Calculation Method:</b>	Minimum Curvature
<b>Design:</b>	Actual	<b>Database:</b>	EDM 5000.1 Single User Db

Survey										
MD (usft)	Inc (°)	Azi (azimuth) (°)	TVD (usft)	V. Sec (usft)	N/S (usft)	E/W (usft)	DLeg (°/100usft)	Build (°/100usft)	Turn (°/100usft)	
4,646.0	4.92	230.35	4,587.2	648.2	-405.6	-505.9	0.63	-0.58	-2.69	
4,732.0	3.47	227.28	4,672.9	654.5	-409.7	-510.7	1.71	-1.69	-3.57	
4,795.0	2.00	214.29	4,735.9	657.5	-411.9	-512.7	2.52	-2.34	-20.61	
Monument Ridge B 44C-08-07-95 TGT										
4,817.0	1.54	204.12	4,757.9	658.1	-412.5	-513.1	2.52	-2.08	-46.28	
4,902.0	1.10	187.77	4,842.8	659.8	-414.4	-513.6	0.68	-0.52	-19.24	
4,988.0	1.05	192.65	4,928.8	661.0	-416.0	-513.9	0.12	-0.06	5.67	
5,073.0	1.19	176.12	5,013.8	662.2	-417.6	-514.0	0.41	0.16	-19.45	
5,158.0	0.76	340.04	5,098.8	662.5	-417.9	-514.2	2.27	-0.51	192.85	
5,244.0	0.46	10.57	5,184.8	662.0	-417.1	-514.3	0.50	-0.35	35.50	
5,329.0	0.31	29.61	5,269.8	661.5	-416.5	-514.1	0.23	-0.18	22.40	
5,415.0	0.35	137.19	5,355.8	661.3	-416.5	-513.8	0.62	0.05	125.09	
5,500.0	0.44	124.71	5,440.8	661.2	-416.9	-513.4	0.15	0.11	-14.68	
5,585.0	0.35	145.36	5,525.8	661.1	-417.3	-513.0	0.20	-0.11	24.29	
5,671.0	0.57	120.00	5,611.8	661.0	-417.7	-512.4	0.34	0.26	-29.49	
5,756.0	0.53	119.48	5,696.8	660.7	-418.1	-511.7	0.05	-0.05	-0.61	
5,842.0	0.57	131.34	5,782.8	660.5	-418.6	-511.1	0.14	0.05	13.79	
5,927.0	0.83	139.66	5,867.8	660.5	-419.4	-510.3	0.33	0.31	9.79	
6,012.0	0.88	290.64	5,952.8	660.8	-419.6	-510.6	1.95	0.06	177.62	
6,098.0	1.24	287.44	6,038.7	661.6	-419.1	-512.1	0.42	0.42	-3.72	
6,183.0	0.88	276.54	6,123.7	662.6	-418.7	-513.6	0.48	-0.42	-12.82	
6,269.0	0.57	280.62	6,209.7	663.3	-418.6	-514.7	0.37	-0.36	4.74	
6,354.0	0.62	310.11	6,294.7	663.6	-418.2	-515.4	0.36	0.06	34.69	
6,439.0	0.45	320.87	6,379.7	663.7	-417.7	-516.0	0.23	-0.20	12.66	
6,525.0	0.26	321.58	6,465.7	663.7	-417.2	-516.3	0.22	-0.22	0.83	
6,610.0	0.44	313.10	6,550.7	663.7	-416.9	-516.7	0.22	0.21	-9.98	
6,695.0	0.75	313.67	6,635.7	663.8	-416.3	-517.3	0.36	0.36	0.67	

<b>Company:</b>	Ursa Operating Company, LLC	<b>Local Co-ordinate Reference:</b>	Well Monument Ridge B 44C-08-07-95
<b>Project:</b>	Rockies Region	<b>TVD Reference:</b>	Monument Ridge B 44C-08-07-95 @ 5718.8usft (PLAN
<b>Site:</b>	Monument Ridge B	<b>MD Reference:</b>	Monument Ridge B 44C-08-07-95 @ 5718.8usft (PLAN
<b>Well:</b>	Monument Ridge B 44C-08-07-95	<b>North Reference:</b>	True
<b>Wellbore:</b>	Wellbore #1	<b>Survey Calculation Method:</b>	Minimum Curvature
<b>Design:</b>	Actual	<b>Database:</b>	EDM 5000.1 Single User Db

Survey									
MD (usft)	Inc (°)	Azi (azimuth) (°)	TVD (usft)	V. Sec (usft)	N/S (usft)	E/W (usft)	DLeg (°/100usft)	Build (°/100usft)	Turn (°/100usft)
6,781.0	0.31	296.45	6,721.7	664.0	-415.8	-517.9	0.54	-0.51	-20.02
6,866.0	0.44	264.67	6,806.7	664.3	-415.7	-518.5	0.28	0.15	-37.39
6,920.0	0.44	251.27	6,860.7	664.7	-415.8	-518.9	0.19	0.00	-24.81
Last PZD Survey									
6,975.0	0.44	251.27	6,915.7	665.1	-415.9	-519.3	0.00	0.00	0.00
Straight Line Projection to TD/Monument Ridge B 44C-08-07-95/Actual									

Design Annotations					
Measured Depth (usft)	Vertical Depth (usft)	Local Coordinates			
		+N/-S (usft)	+E/-W (usft)	Comment	
1,670.0	1,657.6	-85.0	-100.7	Last PZD Surface Survey	
6,920.0	6,860.7	-415.8	-518.9	Last PZD Survey	
6,975.0	6,915.7	-415.9	-519.3	Straight Line Projection to TD/Monument Ridge B 44C-08-07-95/Actual	

Checked By: \_\_\_\_\_ Approved By: \_\_\_\_\_ Date: \_\_\_\_\_

THIS SURVEY IS CORRECT TO THE BEST OF  
MY KNOWLEDGE AND IS SUPPORTED  
BY ACTUAL FIELD DATA





## **Ursa Operating Company, LLC**

**Rockies Region**

**Monument Ridge B**

**Monument Ridge B 44C-08-07-95**

**Wellbore #1**

**Plan: Design #2**

## **Ursa Operating Company LLC Planning Report**

**04 August, 2016**



<b>Company:</b>	Ursa Operating Company, LLC	<b>Local Co-ordinate Reference:</b>	Well Monument Ridge B 44C-08-07-95
<b>Project:</b>	Rockies Region	<b>TVD Reference:</b>	Monument Ridge B 44C-08-07-95 @ 5718.8usft (PLAN
<b>Site:</b>	Monument Ridge B	<b>MD Reference:</b>	Monument Ridge B 44C-08-07-95 @ 5718.8usft (PLAN
<b>Well:</b>	Monument Ridge B 44C-08-07-95	<b>North Reference:</b>	True
<b>Wellbore:</b>	Wellbore #1	<b>Survey Calculation Method:</b>	Minimum Curvature
<b>Design:</b>	Design #2	<b>Database:</b>	MasterDB

Project		Rockies Region	
Map System:	US State Plane 1983	System Datum:	Mean Sea Level
Geo Datum:	North American Datum 1983		
Map Zone:	Colorado Central Zone		

Site	Monument Ridge B					
Site Position:			Northing:	1,596,716.56 usft	Latitude:	39° 26' 40.501 N
From:	Lat/Long		Easting:	2,287,433.43 usft	Longitude:	108° 1' 24.665 W
Position Uncertainty:	0.0 usft		Slot Radius:	13-3/16 "	Grid Convergence:	-1.59 °

Well	Monument Ridge B 44C-08-07-95, SHL: 39.447750475 -108.012276385					
Well Position	+N/-S	0.0 usft	Northing:	1,597,781.58 usft	Latitude:	39° 26' 51.902 N
	+E/-W	0.0 usft	Easting:	2,290,638.84 usft	Longitude:	108° 0' 44.195 W
Position Uncertainty		0.0 usft	Wellhead Elevation:	5,718.8 usft	Ground Level:	5,701.8 usft

Wellbore	Wellbore #1				
Magnetics	Model Name	Sample Date	Declination (°)	Dip Angle (°)	Field Strength (nT)
	IGRF2015	8/1/2016	9.79	65.56	51,600

Design	Design #2			
Audit Notes:				
Version:	Phase:	PROTOTYPE	Tie On Depth:	0.0
Vertical Section:	Depth From (TVD) (usft)	+N/-S (usft)	+E/-W (usft)	Direction (°)
	0.0	0.0	0.0	230.86

Survey Tool Program		Date	8/4/2016		
From (usft)	To (usft)	Survey (Wellbore)	Tool Name	Description	
0.0	7,097.8	Design #2 (Wellbore #1)	MWD	MWD - Standard	

<b>Company:</b>	Ursa Operating Company, LLC	<b>Local Co-ordinate Reference:</b>	Well Monument Ridge B 44C-08-07-95
<b>Project:</b>	Rockies Region	<b>TVD Reference:</b>	Monument Ridge B 44C-08-07-95 @ 5718.8usft (PLAN
<b>Site:</b>	Monument Ridge B	<b>MD Reference:</b>	Monument Ridge B 44C-08-07-95 @ 5718.8usft (PLAN
<b>Well:</b>	Monument Ridge B 44C-08-07-95	<b>North Reference:</b>	True
<b>Wellbore:</b>	Wellbore #1	<b>Survey Calculation Method:</b>	Minimum Curvature
<b>Design:</b>	Design #2	<b>Database:</b>	MasterDB

## Planned Survey

MD (usft)	Inc (°)	Azi (azimuth) (°)	TVD (usft)	TVDSS (usft)	N/S (usft)	E/W (usft)	V. Sec (usft)	DLeg (°/100usft)	Northing (usft)	Easting (usft)
0.0	0.00	0.00	0.0	-5,718.8	0.0	0.0	0.0	0.00	1,597,781.58	2,290,638.84
<b>SHL: 39.447750475, -108.012276385</b>										
100.0	0.00	0.00	100.0	-5,618.8	0.0	0.0	0.0	0.00	1,597,781.58	2,290,638.84
200.0	0.00	0.00	200.0	-5,518.8	0.0	0.0	0.0	0.00	1,597,781.58	2,290,638.84
300.0	0.00	0.00	300.0	-5,418.8	0.0	0.0	0.0	0.00	1,597,781.58	2,290,638.84
400.0	0.00	0.00	400.0	-5,318.8	0.0	0.0	0.0	0.00	1,597,781.58	2,290,638.84
500.0	0.00	0.00	500.0	-5,218.8	0.0	0.0	0.0	0.00	1,597,781.58	2,290,638.84
600.0	0.00	0.00	600.0	-5,118.8	0.0	0.0	0.0	0.00	1,597,781.58	2,290,638.84
700.0	0.00	0.00	700.0	-5,018.8	0.0	0.0	0.0	0.00	1,597,781.58	2,290,638.84
800.0	0.00	0.00	800.0	-4,918.8	0.0	0.0	0.0	0.00	1,597,781.58	2,290,638.84
<b>Start Build 3.50</b>										
900.0	3.50	230.86	899.9	-4,818.9	-1.9	-2.4	3.1	3.50	1,597,779.72	2,290,636.42
1,000.0	7.00	230.86	999.5	-4,719.3	-7.7	-9.5	12.2	3.50	1,597,774.15	2,290,629.17
1,102.2	10.58	230.86	1,100.5	-4,618.3	-17.6	-21.6	27.8	3.50	1,597,764.63	2,290,616.79
<b>Start 3391.5 hold at 1102.2 MD</b>										
1,200.0	10.58	230.86	1,196.6	-4,522.2	-28.9	-35.5	45.8	0.00	1,597,753.69	2,290,602.56
1,300.0	10.58	230.86	1,294.9	-4,423.9	-40.5	-49.7	64.1	0.00	1,597,742.50	2,290,588.01
1,400.0	10.58	230.86	1,393.2	-4,325.6	-52.1	-64.0	82.5	0.00	1,597,731.32	2,290,573.46
1,500.0	10.58	230.86	1,491.5	-4,227.3	-63.6	-78.2	100.8	0.00	1,597,720.13	2,290,558.91
1,600.0	10.58	230.86	1,589.8	-4,129.0	-75.2	-92.4	119.2	0.00	1,597,708.94	2,290,544.36
1,700.0	10.58	230.86	1,688.1	-4,030.7	-86.8	-106.7	137.5	0.00	1,597,697.76	2,290,529.81
1,712.1	10.58	230.86	1,700.0	-4,018.8	-88.2	-108.4	139.8	0.00	1,597,696.40	2,290,528.05
<b>Surface Casing</b>										
1,800.0	10.58	230.86	1,786.4	-3,932.4	-98.4	-120.9	155.9	0.00	1,597,686.57	2,290,515.26
1,900.0	10.58	230.86	1,884.7	-3,834.1	-110.0	-135.1	174.2	0.00	1,597,675.38	2,290,500.71
2,000.0	10.58	230.86	1,983.0	-3,735.8	-121.6	-149.4	192.6	0.00	1,597,664.19	2,290,486.16
2,100.0	10.58	230.86	2,081.3	-3,637.5	-133.2	-163.6	211.0	0.00	1,597,653.01	2,290,471.61
2,200.0	10.58	230.86	2,179.6	-3,539.2	-144.7	-177.9	229.3	0.00	1,597,641.82	2,290,457.05

<b>Company:</b>	Ursa Operating Company, LLC	<b>Local Co-ordinate Reference:</b>	Well Monument Ridge B 44C-08-07-95
<b>Project:</b>	Rockies Region	<b>TVD Reference:</b>	Monument Ridge B 44C-08-07-95 @ 5718.8usft (PLAN
<b>Site:</b>	Monument Ridge B	<b>MD Reference:</b>	Monument Ridge B 44C-08-07-95 @ 5718.8usft (PLAN
<b>Well:</b>	Monument Ridge B 44C-08-07-95	<b>North Reference:</b>	True
<b>Wellbore:</b>	Wellbore #1	<b>Survey Calculation Method:</b>	Minimum Curvature
<b>Design:</b>	Design #2	<b>Database:</b>	MasterDB

## Planned Survey

MD (usft)	Inc (°)	Azi (azimuth) (°)	TVD (usft)	TVDSS (usft)	N/S (usft)	E/W (usft)	V. Sec (usft)	DLeg (°/100usft)	Northing (usft)	Easting (usft)
2,300.0	10.58	230.86	2,277.9	-3,440.9	-156.3	-192.1	247.7	0.00	1,597,630.63	2,290,442.50
2,400.0	10.58	230.86	2,376.2	-3,342.6	-167.9	-206.3	266.0	0.00	1,597,619.45	2,290,427.95
2,500.0	10.58	230.86	2,474.5	-3,244.3	-179.5	-220.6	284.4	0.00	1,597,608.26	2,290,413.40
2,600.0	10.58	230.86	2,572.8	-3,146.0	-191.1	-234.8	302.7	0.00	1,597,597.07	2,290,398.85
2,700.0	10.58	230.86	2,671.1	-3,047.7	-202.7	-249.0	321.1	0.00	1,597,585.89	2,290,384.30
2,800.0	10.58	230.86	2,769.4	-2,949.4	-214.2	-263.3	339.4	0.00	1,597,574.70	2,290,369.75
2,900.0	10.58	230.86	2,867.7	-2,851.1	-225.8	-277.5	357.8	0.00	1,597,563.51	2,290,355.20
3,000.0	10.58	230.86	2,966.0	-2,752.8	-237.4	-291.7	376.1	0.00	1,597,552.33	2,290,340.65
3,100.0	10.58	230.86	3,064.3	-2,654.5	-249.0	-306.0	394.5	0.00	1,597,541.14	2,290,326.10
3,200.0	10.58	230.86	3,162.6	-2,556.2	-260.6	-320.2	412.8	0.00	1,597,529.95	2,290,311.55
3,300.0	10.58	230.86	3,261.0	-2,457.8	-272.2	-334.4	431.2	0.00	1,597,518.76	2,290,297.00
3,400.0	10.58	230.86	3,359.3	-2,359.5	-283.8	-348.7	449.6	0.00	1,597,507.58	2,290,282.45
3,500.0	10.58	230.86	3,457.6	-2,261.2	-295.3	-362.9	467.9	0.00	1,597,496.39	2,290,267.90
3,600.0	10.58	230.86	3,555.9	-2,162.9	-306.9	-377.2	486.3	0.00	1,597,485.20	2,290,253.35
3,700.0	10.58	230.86	3,654.2	-2,064.6	-318.5	-391.4	504.6	0.00	1,597,474.02	2,290,238.80
3,702.7	10.58	230.86	3,656.8	-2,062.0	-318.8	-391.8	505.1	0.00	1,597,473.72	2,290,238.40
<b>Williams Fork</b>										
3,800.0	10.58	230.86	3,752.5	-1,966.3	-330.1	-405.6	523.0	0.00	1,597,462.83	2,290,224.24
3,900.0	10.58	230.86	3,850.8	-1,868.0	-341.7	-419.9	541.3	0.00	1,597,451.64	2,290,209.69
4,000.0	10.58	230.86	3,949.1	-1,769.7	-353.3	-434.1	559.7	0.00	1,597,440.46	2,290,195.14
4,100.0	10.58	230.86	4,047.4	-1,671.4	-364.9	-448.3	578.0	0.00	1,597,429.27	2,290,180.59
4,200.0	10.58	230.86	4,145.7	-1,573.1	-376.4	-462.6	596.4	0.00	1,597,418.08	2,290,166.04
4,300.0	10.58	230.86	4,244.0	-1,474.8	-388.0	-476.8	614.7	0.00	1,597,406.90	2,290,151.49
4,400.0	10.58	230.86	4,342.3	-1,376.5	-399.6	-491.0	633.1	0.00	1,597,395.71	2,290,136.94
4,493.7	10.58	230.86	4,434.3	-1,284.5	-410.5	-504.4	650.3	0.00	1,597,385.23	2,290,123.31
<b>Start Drop -3.50</b>										
4,493.9	10.58	230.86	4,434.5	-1,284.3	-410.5	-504.4	650.3	0.00	1,597,385.21	2,290,123.28

<b>Company:</b>	Ursa Operating Company, LLC	<b>Local Co-ordinate Reference:</b>	Well Monument Ridge B 44C-08-07-95
<b>Project:</b>	Rockies Region	<b>TVD Reference:</b>	Monument Ridge B 44C-08-07-95 @ 5718.8usft (PLAN
<b>Site:</b>	Monument Ridge B	<b>MD Reference:</b>	Monument Ridge B 44C-08-07-95 @ 5718.8usft (PLAN
<b>Well:</b>	Monument Ridge B 44C-08-07-95	<b>North Reference:</b>	True
<b>Wellbore:</b>	Wellbore #1	<b>Survey Calculation Method:</b>	Minimum Curvature
<b>Design:</b>	Design #2	<b>Database:</b>	MasterDB

## Planned Survey

MD (usft)	Inc (°)	Azi (azimuth) (°)	TVD (usft)	TVDSS (usft)	N/S (usft)	E/W (usft)	V. Sec (usft)	DLeg (°/100usft)	Northing (usft)	Easting (usft)
4,500.0	10.36	230.86	4,440.6	-1,278.2	-411.2	-505.3	651.4	3.50	1,597,384.53	2,290,122.40
4,600.0	6.86	230.86	4,539.4	-1,179.4	-420.6	-516.9	666.4	3.50	1,597,375.40	2,290,110.53
4,700.0	3.36	230.86	4,639.0	-1,079.8	-426.3	-523.8	675.3	3.50	1,597,369.97	2,290,103.47
4,795.8	0.01	230.86	4,734.8	-984.0	-428.0	-526.0	678.1	3.50	1,597,368.26	2,290,101.24
<b>Start 2302.2 hold at 4795.8 MD - Top of Gas</b>										
4,796.0	0.00	0.00	4,735.0	-983.8	-428.0	-526.0	678.1	3.50	1,597,368.26	2,290,101.24
<b>Back to Vertical</b>										
4,800.0	0.00	0.00	4,739.0	-979.8	-428.0	-526.0	678.1	0.00	1,597,368.26	2,290,101.24
4,900.0	0.00	0.00	4,839.0	-879.8	-428.0	-526.0	678.1	0.00	1,597,368.26	2,290,101.24
5,000.0	0.00	0.00	4,939.0	-779.8	-428.0	-526.0	678.1	0.00	1,597,368.26	2,290,101.24
5,100.0	0.00	0.00	5,039.0	-679.8	-428.0	-526.0	678.1	0.00	1,597,368.26	2,290,101.24
5,200.0	0.00	0.00	5,139.0	-579.8	-428.0	-526.0	678.1	0.00	1,597,368.26	2,290,101.24
5,300.0	0.00	0.00	5,239.0	-479.8	-428.0	-526.0	678.1	0.00	1,597,368.26	2,290,101.24
5,400.0	0.00	0.00	5,339.0	-379.8	-428.0	-526.0	678.1	0.00	1,597,368.26	2,290,101.24
5,500.0	0.00	0.00	5,439.0	-279.8	-428.0	-526.0	678.1	0.00	1,597,368.26	2,290,101.24
5,600.0	0.00	0.00	5,539.0	-179.8	-428.0	-526.0	678.1	0.00	1,597,368.26	2,290,101.24
5,700.0	0.00	0.00	5,639.0	-79.8	-428.0	-526.0	678.1	0.00	1,597,368.26	2,290,101.24
5,800.0	0.00	0.00	5,739.0	20.2	-428.0	-526.0	678.1	0.00	1,597,368.26	2,290,101.24
5,900.0	0.00	0.00	5,839.0	120.2	-428.0	-526.0	678.1	0.00	1,597,368.26	2,290,101.24
6,000.0	0.00	0.00	5,939.0	220.2	-428.0	-526.0	678.1	0.00	1,597,368.26	2,290,101.24
6,097.8	0.00	0.00	6,036.8	318.0	-428.0	-526.0	678.1	0.00	1,597,368.26	2,290,101.24
<b>Cameo</b>										
6,100.0	0.00	0.00	6,039.0	320.2	-428.0	-526.0	678.1	0.00	1,597,368.26	2,290,101.24
6,200.0	0.00	0.00	6,139.0	420.2	-428.0	-526.0	678.1	0.00	1,597,368.26	2,290,101.24
6,300.0	0.00	0.00	6,239.0	520.2	-428.0	-526.0	678.1	0.00	1,597,368.26	2,290,101.24
6,400.0	0.00	0.00	6,339.0	620.2	-428.0	-526.0	678.1	0.00	1,597,368.26	2,290,101.24
6,500.0	0.00	0.00	6,439.0	720.2	-428.0	-526.0	678.1	0.00	1,597,368.26	2,290,101.24

<b>Company:</b>	Ursa Operating Company, LLC	<b>Local Co-ordinate Reference:</b>	Well Monument Ridge B 44C-08-07-95
<b>Project:</b>	Rockies Region	<b>TVD Reference:</b>	Monument Ridge B 44C-08-07-95 @ 5718.8usft (PLAN
<b>Site:</b>	Monument Ridge B	<b>MD Reference:</b>	Monument Ridge B 44C-08-07-95 @ 5718.8usft (PLAN
<b>Well:</b>	Monument Ridge B 44C-08-07-95	<b>North Reference:</b>	True
<b>Wellbore:</b>	Wellbore #1	<b>Survey Calculation Method:</b>	Minimum Curvature
<b>Design:</b>	Design #2	<b>Database:</b>	MasterDB

Planned Survey											
MD (usft)	Inc (°)	Azi (azimuth) (°)		TVD (usft)	TVDSS (usft)	N/S (usft)	E/W (usft)	V. Sec (usft)	DLeg (°/100usft)	Northing (usft)	Easting (usft)
6,600.0	0.00	0.00		6,539.0	820.2	-428.0	-526.0	678.1	0.00	1,597,368.26	2,290,101.24
6,700.0	0.00	0.00		6,639.0	920.2	-428.0	-526.0	678.1	0.00	1,597,368.26	2,290,101.24
6,797.8	0.00	0.00		6,736.8	1,018.0	-428.0	-526.0	678.1	0.00	1,597,368.26	2,290,101.24
Rollins											
6,800.0	0.00	0.00		6,739.0	1,020.2	-428.0	-526.0	678.1	0.00	1,597,368.26	2,290,101.24
6,900.0	0.00	0.00		6,839.0	1,120.2	-428.0	-526.0	678.1	0.00	1,597,368.26	2,290,101.24
7,000.0	0.00	0.00		6,939.0	1,220.2	-428.0	-526.0	678.1	0.00	1,597,368.26	2,290,101.24
7,097.8	0.00	0.00		7,036.8	1,318.0	-428.0	-526.0	678.1	0.00	1,597,368.26	2,290,101.24
TD											
7,098.0	0.00	0.00		7,037.0	1,318.2	-428.0	-526.0	678.1	0.00	1,597,368.26	2,290,101.24
TD at 7098.0 - BHL: 39.4465753000, -108.0141389000											

Formations						
Measured Depth (usft)	Vertical Depth (usft)	Name	Lithology	Dip (°)	Dip Direction (°)	
6,097.8	6,036.8	Cameo		0.00		
3,702.7	3,656.8	Williams Fork		0.00		
7,097.8	7,036.8	TD		0.00		
4,795.8	4,734.8	Top of Gas		0.00		
6,797.8	6,736.8	Rollins		0.00		

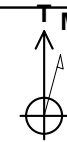
<b>Company:</b>	Ursa Operating Company, LLC	<b>Local Co-ordinate Reference:</b>	Well Monument Ridge B 44C-08-07-95
<b>Project:</b>	Rockies Region	<b>TVD Reference:</b>	Monument Ridge B 44C-08-07-95 @ 5718.8usft (PLAN
<b>Site:</b>	Monument Ridge B	<b>MD Reference:</b>	Monument Ridge B 44C-08-07-95 @ 5718.8usft (PLAN
<b>Well:</b>	Monument Ridge B 44C-08-07-95	<b>North Reference:</b>	True
<b>Wellbore:</b>	Wellbore #1	<b>Survey Calculation Method:</b>	Minimum Curvature
<b>Design:</b>	Design #2	<b>Database:</b>	MasterDB

Plan Annotations				
Measured Depth (usft)	Vertical Depth (usft)	Local Coordinates		Comment
+N/-S (usft)	+E/-W (usft)			
0.0	0.0	0.0	0.0	SHL: 39.447750475, -108.012276385
800.0	800.0	0.0	0.0	Start Build 3.50
1,102.2	1,100.5	-17.6	-21.6	Start 3391.5 hold at 1102.2 MD
1,712.1	1,700.0	-88.2	-108.4	Surface Casing
4,493.7	4,434.3	-410.5	-504.4	Start Drop -3.50
4,795.8	4,734.8	-428.0	-526.0	Start 2302.2 hold at 4795.8 MD
4,796.0	4,735.0	-428.0	-526.0	Back to Vertical
7,098.0	7,037.0	-428.0	-526.0	TD at 7098.0
7,098.0	7,037.0	-428.0	-526.0	BHL: 39.4465753000, -108.0141389000

Checked By: _____	Approved By: _____	Date: _____
-------------------	--------------------	-------------



Well Name: Monument Ridge B 44C-08-07-95  
Surface Location: Monument Ridge B  
North American Datum 1983, US State Plane 1983, Colorado Central Zone  
Ground Elevation: 5701.8  
+N/-S +E/-W Northing Easting Latitude Longitude Slot  
0.0 0.0 1597781.58 2290638.84 39° 26' 51.902 N 108° 0' 44.195 W  
PLAN KB Monument Ridge B 44C-08-07-95 @ 5718.8usft (PLAN KB)



Azimuths to True North  
Magnetic North: 9.79°  
Magnetic Field  
Strength: 51600.4snT  
Dip Angle: 65.56°  
Date: 8/1/2016  
Model: IGRF2015

Monument Ridge B  
Monument Ridge B 44C-08-07-95  
Design #2  
19:50, August 04 2016

#### WELLBORE TARGET DETAILS (MAP CO-ORDINATES AND LAT/LONG)

Name	TVD	+N/-S	+E/-W	Northing	Easting	Latitude	Longitude	Shape
Monument Ridge B 44C-08-07-95 TGT	4737.0	-428.0	-526.0	1597368.26	2290101.24	39° 26' 47.671 N	108° 0' 50.900 W	Rectangle (Sides: L40.0 W100.0)

#### SECTION DETAILS

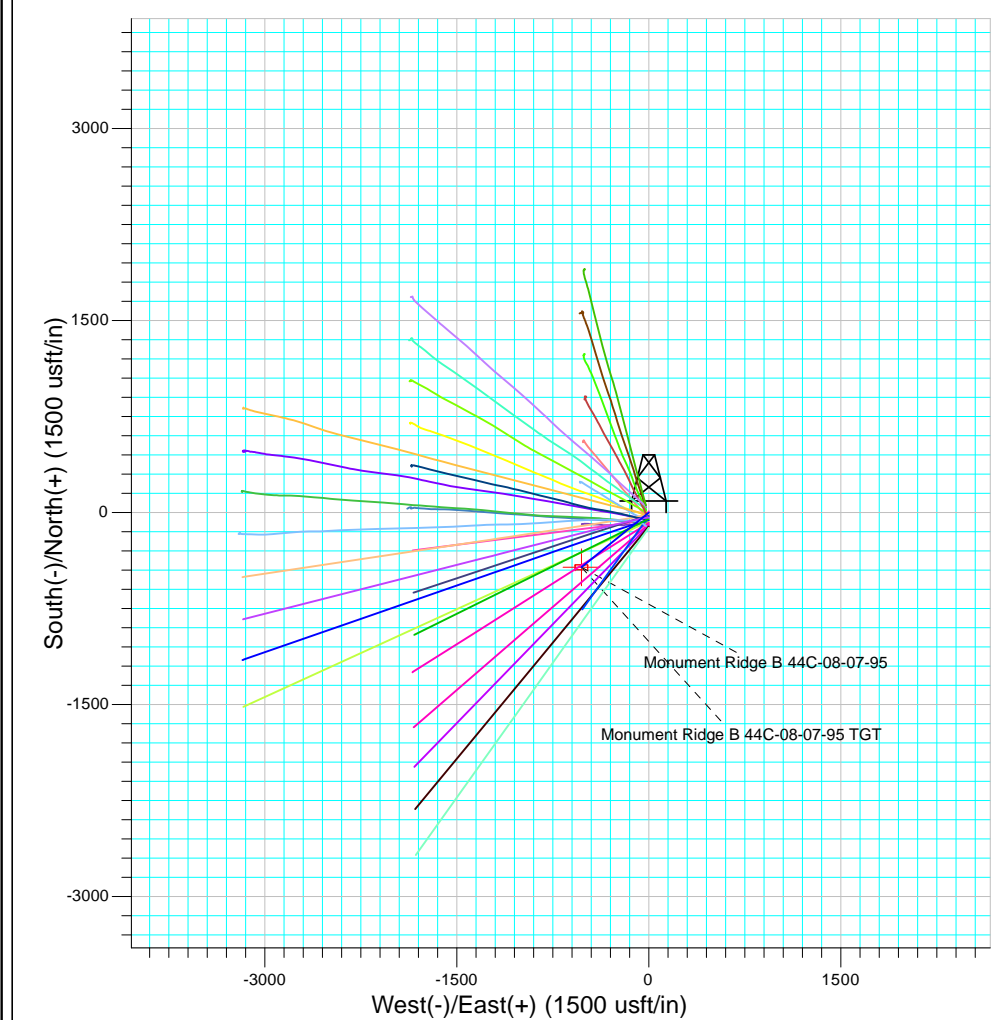
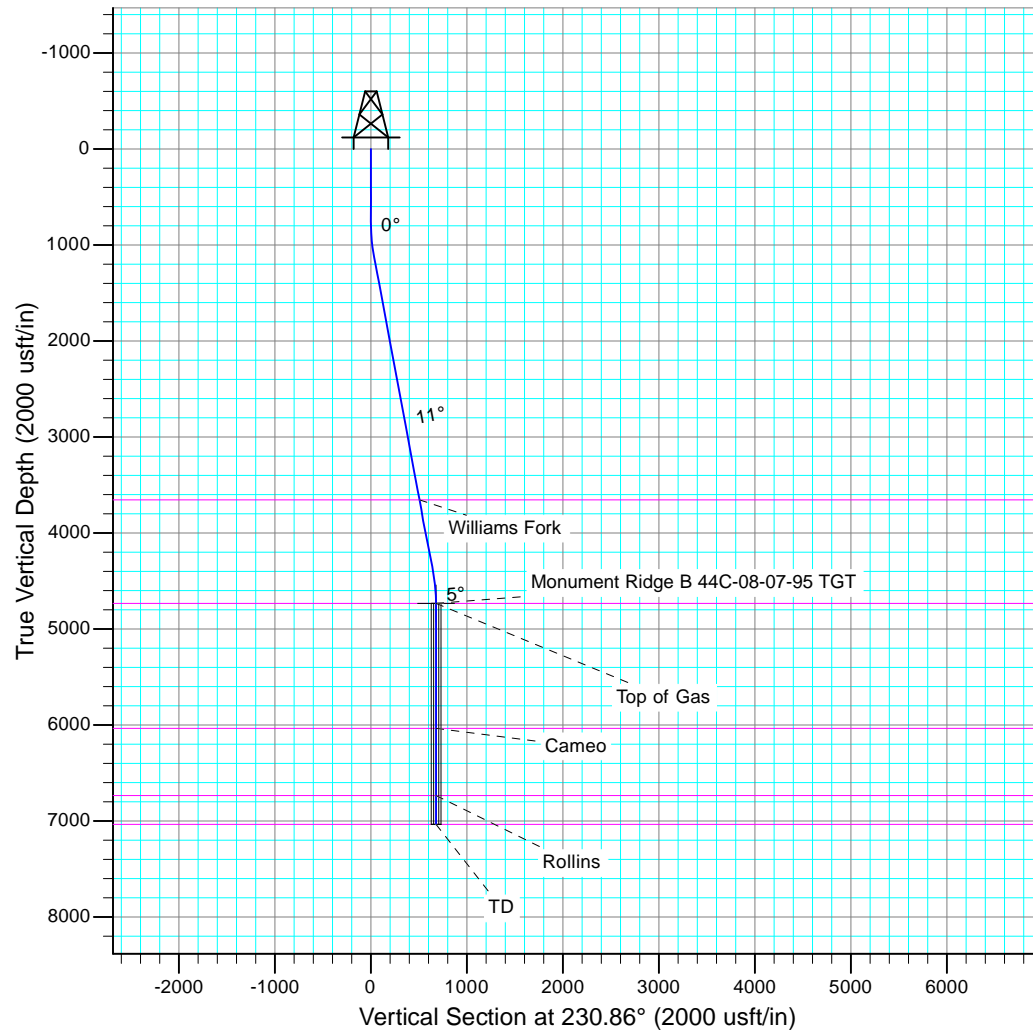
Sec	MD	Inc	Azi	TVD	+N/-S	+E/-W	Dleg	TFace	Vsect	Target
1	0.0	0.00	0.00	0.0	0.0	0.0	0.00	0.00	0.0	
2	800.0	0.00	0.00	800.0	0.0	0.0	0.00	0.00	0.0	
3	1102.2	10.58	230.86	1100.5	-17.6	-21.6	3.50	230.86	27.8	
4	4493.9	10.58	230.86	4434.5	-410.5	-504.4	0.00	0.00	650.3	
5	4796.0	0.00	0.00	4735.0	-428.0	-526.0	3.50	180.00	678.1	
6	7098.0	0.00	0.00	7037.0	-428.0	-526.0	0.00	0.00	678.1	

#### ANNOTATIONS

TVD	MD	Annotation
0.0	0.0	SHL: 39.447750475, -108.012276385
800.0	800.0	Start Build 3.50
1100.5	1102.2	Start 3391.5 hold at 1102.2 MD
1700.0	1712.1	Surface Casing
4434.3	4493.7	Start Drop -3.50
4734.8	4795.8	Start 2302.2 hold at 4795.8 MD
4735.0	4796.0	Back to Vertical
7037.0	7098.0	TD at 7098.0
7037.0	7098.0	BHL: 39.4465753000, -108.0141389000

#### FORMATION TOP DETAILS

TVDPath	MDPath	Formation	DipAngle	DipDir
3656.8	3702.7	Williams Fork	0.00	
4734.8	4795.8	Top of Gas	0.00	
6036.8	6097.8	Cameo	0.00	
6736.8	6797.8	Rollins	0.00	
7036.8	7097.8	TD	0.00	





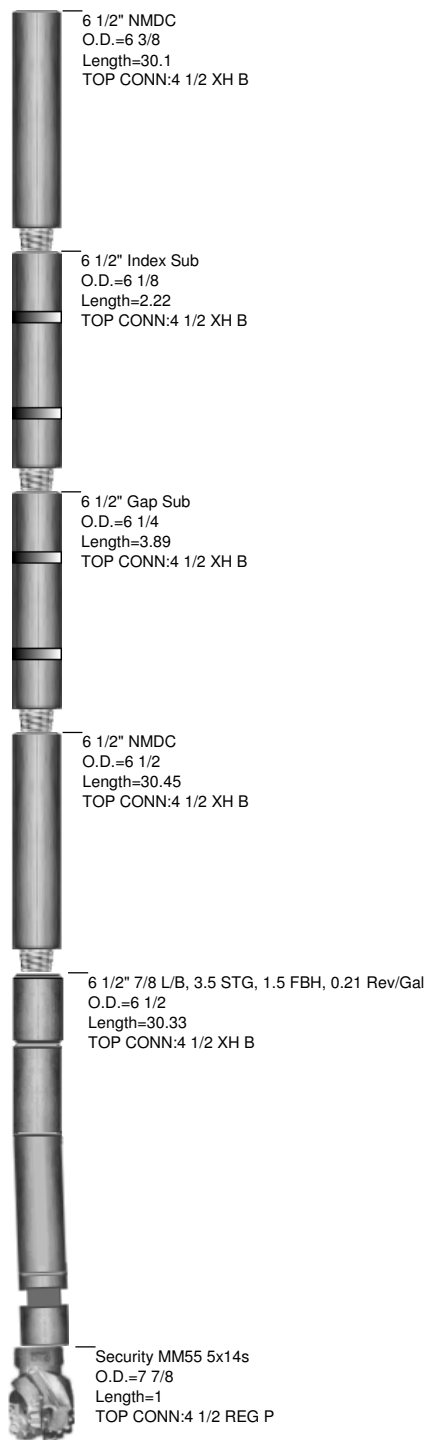


## Well Information

**BHA #****1**

<b>JOB NO.:</b>	CO16572	<b>FIELD:</b>	Battlement Mesa
<b>Company:</b>	URSA Resources	<b>Township:</b>	7S
<b>LOCATION:</b>	Monument Ridge B Pad	<b>SECT:RANGE:</b>	8
<b>RIG NAME:</b>	Capstar 321		95W
<b>STATE:</b>	Colorado		
<b>COUNTY:</b>	Garfield	<b>BHA TYPE</b>	Steerable Assembly
<b>WELL NAME:</b>	Monument Ridge B 44C-08-07-95		

***Picking up directional tools to hold  
10.58 INC through tangent drop to  
vertical hold to TD***





**JOB NO.:** CO16572  
**Company:** URSA Resources  
**LOCATION:** Monument Ridge B Pad  
**RIG NAME:** Capstar 321  
**STATE:** Colorado  
**COUNTY:** Country  
**WELL NAME:** Monument Ridge B 44C-08-07-95

**FIELD:** Battlement Mesa  
**Township:** 7S  
**Range** 95W

MOTOR INFORMATION			
Desc: 7/8 L/B, 3.5 STG, 1.5 FBH, 0.21 Rev/Gal			
Bent Hsg/Sub: 1.5 / 0	Bit to Bend: 6		
Pad OD: 6 3/4	NB Stab:		

## Slide Report for BHA # 1

Note: Surveys listed are interpolated from the actual surveys

#	Date	Drill Mode	Start Time	End Time	Hours	Start MD	End MD	Depth Drilled	WOB	ROP	RPM	Surf. Torque	Flow Rate	SPP	TFO	INC	AZM	DLS	Note
1	27-Oct	Drilling	15:32	16:02	0.50	1725	1799	74	20	148.0	45	3500	400	1400		12.43	231.40	0.96	
1	27-Oct	Drilling	16:13	16:38	0.42	1799	1884	85	20	204.0	45	3500	400	1400		11.86	231.13	0.64	
1	27-Oct	Drilling	16:42	17:05	0.38	1884	1970	86	20	224.3	45	3500	400	1400		11.24	229.66	0.90	
1	27-Oct	Drilling	17:10	17:30	0.33	1970	2055	85	20	255.0	45	3500	400	1400		10.84	232.66	1.26	
1	27-Oct	Sliding	17:35	17:45	0.17	2055	2065	10	20	60.0	0	3500	400	1400	90R	10.81	233.32	1.26	
1	27-Oct	Drilling	17:45	18:05	0.33	2065	2141	76	25	228.0	45	5000	460	1850		10.63	233.52	0.48	
1	27-Oct	Drilling	18:10	18:40	0.50	2141	2226	85	25	170.0	45	5000	460	1850		10.29	232.16	0.52	
1	27-Oct	Drilling	18:45	19:05	0.33	2226	2311	85	25	255.0	45	5000	460	1850		9.73	230.88	0.82	
1	27-Oct	Drilling	19:10	19:35	0.42	2311	2397	86	25	206.4	45	5000	460	1850		8.99	230.34	0.91	
1	27-Oct	Drilling	19:40	20:00	0.33	2397	2482	85	25	255.0	45	5000	460	1850		9.34	231.91	1.22	
1	27-Oct	Sliding	20:05	20:15	0.17	2482	2494	12	20	72.0	0	5000	400	1850	20R	9.48	232.23	1.22	
1	27-Oct	Drilling	20:15	20:30	0.25	2494	2568	74	25	296.0	45	5000	460	1850		10.42	233.64	1.34	
1	27-Oct	Sliding	20:35	20:45	0.17	2568	2583	15	20	90.0	0	5000	400	1850		10.61	233.87	1.34	
1	27-Oct	Drilling	20:45	21:05	0.33	2583	2653	70	25	210.0	45	5000	460	1850		10.43	234.15	0.69	
1	27-Oct	Drilling	21:10	21:35	0.42	2653	2738	85	25	204.0	45	5000	460	1850		11.14	232.96	1.73	
1	27-Oct	Sliding	21:40	21:55	0.25	2738	2758	20	25	80.0	0	5000	460	1850		11.48	232.56	1.73	
1	27-Oct	Drilling	21:55	22:15	0.33	2758	2823	65	25	195.0	45	5000	460	1850		11.28	232.04	0.68	
1	27-Oct	Drilling	22:20	22:45	0.42	2823	2909	86	25	206.4	45	5000	460	1850		10.51	231.32	1.04	
1	27-Oct	Drilling	22:50	23:10	0.33	2909	2994	85	25	255.0	45	5000	460	1850		11.16	232.17	1.79	
1	27-Oct	Sliding	23:15	23:30	0.25	2994	3014	20	25	80.0	0	5000	460	1850	360G	11.51	232.54	1.79	
1	27-Oct	Drilling	23:30	23:55	0.42	3014	3079	65	25	156.0	45	5000	460	1850		11.47	231.97	0.49	
1	28-Oct	Drilling	00:00	00:25	0.42	3079	3165	86	25	206.4	45	5000	460	1850		10.94	231.96	0.74	
1	28-Oct	Drilling	00:30	00:50	0.33	3165	3250	85	25	255.0	45	5000	460	1850		10.33	231.86	0.73	
1	28-Oct	Drilling	00:55	01:30	0.58	3250	3335	85	25	145.7	45	5000	460	1850		9.91	231.37	0.37	
1	28-Oct	Drilling	01:35	02:00	0.42	3335	3418	83	25	199.2	45	5000	460	1850		9.29	230.43	1.02	
1	28-Oct	Drilling	02:05	02:30	0.42	3418	3506	88	25	211.2	45	5000	460	1850		9.99	230.66	1.88	

# Slide Report for BHA # 1

Note: Surveys listed are interpolated from the actual surveys

#	Date	Drill Mode	Start Time	End Time	Hours	Start MD	End MD	Depth Drilled	WOB	ROP	RPM	Surf. Torque	Flow Rate	SPP	TFO	INC	AZM	DLS	Note
1	28-Oct	Sliding	02:35	02:50	0.25	3506	3526	20	25	80.0	0	5000	460	1850	360G	10.36	230.90	1.88	
1	28-Oct	Drilling	02:50	03:15	0.42	3526	3591	65	25	156.0	45	5000	460	1850		10.24	231.29	0.58	
1	28-Oct	Drilling	03:20	03:55	0.58	3591	3677	86	25	147.4	45	5000	460	1850		10.71	230.10	1.27	
1	28-Oct	Sliding	04:00	04:15	0.25	3677	3697	20	25	80.0	0	5000	460	1850	360G	10.95	229.65	1.27	
1	28-Oct	Drilling	04:15	04:35	0.33	3697	3762	65	25	195.0	45	5000	460	1850		10.42	229.02	1.20	
1	28-Oct	Drilling	04:40	05:08	0.47	3762	3847	85	25	182.1	45	10000	460	2000		10.42	230.66	0.90	
1	28-Oct	Sliding	05:15	05:25	0.17	3847	3862	15	25	90.0	0	10000	460	2000	15R	10.52	231.15	0.90	
1	28-Oct	Drilling	05:25	05:50	0.42	3862	3933	71	25	170.4	45	10000	460	2000		9.94	231.12	1.26	
1	28-Oct	Drilling	05:55	06:29	0.57	3933	4018	85	25	150.0	45	10000	460	2000		10.06	231.51	0.91	
1	28-Oct	Sliding	06:35	06:45	0.17	4018	4038	20	25	120.0	45	10000	460	2000	0G	10.23	231.76	0.91	
1	28-Oct	Drilling	06:45	07:09	0.40	4038	4104	66	25	165.0	45	10000	460	2000		10.13	231.16	0.43	
1	28-Oct	Drilling	07:15	07:50	0.58	4104	4189	85	25	145.7	45	10000	460	2000		9.31	231.89	1.34	
1	28-Oct	Drilling	07:56	08:28	0.53	4189	4274	85	25	159.4	45	10000	460	2000		8.38	232.18	0.98	
1	28-Oct	Drilling	08:35	09:10	0.58	4274	4359	85	25	145.7	45	10000	460	2000		7.47	233.18	1.17	
1	28-Oct	Drilling	09:50	10:22	0.53	4359	4445	86	25	161.3	45	10000	460	2000		6.61	234.70	0.94	
1	28-Oct	Drilling	10:28	11:04	0.60	4445	4530	85	25	141.7	45	10000	460	2000		5.74	233.63	1.11	
1	28-Oct	Drilling	11:10	11:45	0.58	4530	4616	86	25	147.4	45	10000	460	2000		5.09	231.21	0.63	
1	28-Oct	Drilling	11:51	12:30	0.65	4616	4701	85	25	130.8	45	10000	460	2000		3.99	228.64	1.71	
1	28-Oct	Sliding	12:37	12:49	0.20	4701	4719	18	25	90.0	0	10000	460	2000	170L	3.69	227.90	1.71	
1	28-Oct	Drilling	12:49	13:20	0.52	4719	4787	68	25	131.6	45	10000	460	2000		2.18	216.90	2.52	
1	28-Oct	Sliding	13:28	13:44	0.27	4787	4810	23	25	86.2	0	10000	460	2000	170R	1.68	207.96	2.52	
1	28-Oct	Drilling	13:44	14:08	0.40	4810	4872	62	25	155.0	45	10000	460	2000		1.24	194.84	0.68	
1	28-Oct	Drilling	14:15	14:50	0.58	4872	4957	85	25	145.7	45	10000	460	2000		1.07	190.84	0.12	
1	28-Oct	Drilling	14:55	15:32	0.62	4957	5043	86	25	139.5	45	10000	460	2000		1.13	181.47	0.41	
1	28-Oct	Drilling	15:38	16:18	0.67	5043	5128	85	25	127.5	45	10000	460	2000		0.15	287.21	2.27	
1	28-Oct	Sliding	16:24	16:38	0.23	5128	5148	20	25	85.7	0	10000	460	2000	350M	0.54	335.90	2.27	
1	28-Oct	Drilling	16:38	17:10	0.53	5148	5213	65	25	121.9	45	10000	460	2000		0.55	355.86	0.50	
1	28-Oct	Drilling	17:15	17:55	0.67	5213	5299	86	25	129.0	45	10000	460	2000		0.36	21.10	0.23	
1	28-Oct	Drilling	18:00	18:45	0.75	5299	5384	85	25	113.3	45	10000	460	2000		0.22	107.92	0.62	
1	28-Oct	Drilling	18:50	19:35	0.75	5384	5470	86	25	114.7	45	10000	460	2000		0.41	128.48	0.15	
1	28-Oct	Drilling	19:40	20:15	0.58	5470	5555	85	25	145.7	45	10000	460	2000		0.38	136.98	0.20	
1	28-Oct	Drilling	20:20	21:00	0.67	5555	5640	85	25	127.5	45	10000	460	2000		0.48	126.44	0.34	
1	28-Oct	Drilling	21:05	21:50	0.75	5640	5726	86	25	114.7	45	10000	460	2000		0.54	119.67	0.05	
1	28-Oct	Drilling	21:55	22:35	0.67	5726	5811	85	25	127.5	45	10000	460	2000		0.55	127.27	0.14	
1	28-Oct	Drilling	22:40	23:20	0.67	5811	5897	86	25	129.0	45	10000	460	2000		0.74	137.40	0.33	

# Slide Report for BHA # 1

Note: Surveys listed are interpolated from the actual surveys

#	Date	Drill Mode	Start Time	End Time	Hours	Start MD	End MD	Depth Drilled	WOB	ROP	RPM	Surf. Torque	Flow Rate	SPP	TFO	INC	AZM	DLS	Note
1	28-Oct	Drilling	23:25	24:00	0.58	5897	5958	61	25	104.6	45	10000	460	2000		0.29	171.92	1.95	
1	29-Oct	Drilling	00:00	00:05	0.08	5958	5982	24	25	288.0	45	10000	460	2000		0.34	266.24	1.95	
1	29-Oct	Sliding	00:10	00:35	0.42	5982	6002	20	25	48.0	0	10000	460	2000	300M	0.69	286.72	1.95	
1	29-Oct	Drilling	00:35	01:10	0.58	6002	6067	65	25	111.4	45	10000	460	2000		1.11	288.35	0.42	
1	29-Oct	Drilling	01:15	02:00	0.75	6067	6153	86	25	114.7	45	10000	460	2000		1.00	281.27	0.48	
1	29-Oct	Drilling	02:05	02:45	0.67	6153	6238	85	25	127.5	45	10000	460	2000		0.68	278.72	0.37	
1	29-Oct	Drilling	02:50	03:30	0.67	6238	6324	86	25	129.0	45	10000	460	2000		0.58	300.36	0.36	
1	29-Oct	Drilling	03:35	04:10	0.58	6324	6409	85	25	145.7	45	10000	460	2000		0.51	316.26	0.23	
1	29-Oct	Drilling	04:15	05:02	0.78	6409	6494	85	25	108.5	45	10000	460	2000		0.33	321.23	0.22	
1	29-Oct	Drilling	05:08	05:45	0.62	6494	6580	86	25	139.5	45	10000	460	2000		0.38	315.16	0.22	
1	29-Oct	Drilling	05:53	06:30	0.62	6580	6665	85	25	137.8	45	14000	460	2400		0.64	313.53	0.36	
1	29-Oct	Drilling	06:45	07:26	0.68	6665	6750	85	25	124.4	45	14000	460	2400		0.46	306.39	0.54	
1	29-Oct	Drilling	07:32	08:12	0.67	6750	6836	86	25	129.0	45	14000	460	2400		0.38	273.34	0.28	
1	29-Oct	Drilling	08:16	09:01	0.75	6836	6921	85	25	113.3	45	14000	460	2400		0.44	251.27	0.00	
1	29-Oct	Drilling	09:06	09:41	0.58	6921	6975	54	25	92.6	45	14000	460	2400		0.44	251.24	0.00	

**Total Drilled:** 5250 **Avg. Total ROP:** 143.31 **DEPTH% - TIME %**

**Total Rotary Drilled:** 5017 **Avg. Rotary ROP:** 148.95 **Percent Rotary:** 95.56 - 91.95

**Total Drilled Sliding:** 233 **Avg. Slide ROP:** 78.98 **Percent Slide:** 4.44 - 8.05



<b>JOB NO.:</b>	CO16572
<b>Company:</b>	URSA Resources
<b>LOCATION:</b>	Monument Ridge B Pad
<b>RIG NAME:</b>	Capstar 321
<b>STATE:</b>	Colorado
<b>COUNTY:</b>	USA
<b>WELL NAME:</b>	Monument Ridge B 44C-08-07-95

<b>FIELD:</b>	Battlement Mesa	
<b>Township:</b>	7S	
<b>SECT\ RANGE:</b>	8	95W

## Tool Utilization Report

### Bits

#### 12631072 - Security MM55 5x14s

BHA #	Rotary Hours	Slide Hours	Total Hours	Circ. Hours	Below Rotary	Amount Drilled
1	32.90	2.95	37.98	37.98	51.25	5,250.00
1	32.90	2.95	37.98	37.98	51.25	5,250.00
1	32.90	2.95	37.98	37.98	51.25	5,250.00

<< Summary for 12631072

<< Summary for Bits

### DC

#### DD650-005 - 6 1/2" NMDC

BHA #	Rotary Hours	Slide Hours	Total Hours	Circ. Hours	Below Rotary	Amount Drilled
1	32.90	2.95	37.98	37.98	51.25	5,250.00
1	32.90	2.95	37.98	37.98	51.25	5,250.00

<< Summary for DD650-005

#### DD650-022 - 6 1/2" NMDC

BHA #	Rotary Hours	Slide Hours	Total Hours	Circ. Hours	Below Rotary	Amount Drilled
1	32.90	2.95	37.98	37.98	51.25	5,250.00
1	32.90	2.95	37.98	37.98	51.25	5,250.00
2	65.80	5.90	75.97	75.97	102.50	10,500.00

<< Summary for DD650-022

<< Summary for DC

### Motors

#### 6253(BRT) - 6 1/2" 7/8 L/B, 3.5 STG, 1.5 FBH, 0.21 Rev/Gal

BHA #	Rotary Hours	Slide Hours	Total Hours	Circ. Hours	Below Rotary	Amount Drilled
1	32.90	2.95	37.98	37.98	51.25	5,250.00
1	32.90	2.95	37.98	37.98	51.25	5,250.00
1	32.90	2.95	37.98	37.98	51.25	5,250.00

<< Summary for 6253(BRT)

<< Summary for Motors

### MWD

## Tool Utilization Report

### PZDGS610 - 6 1/2" Gap Sub

BHA #	Rotary Hours	Slide Hours	Total Hours	Circ. Hours	Below Rotary	Amount Drilled
1	32.90	2.95	37.98	37.98	51.25	5,250.00
1	32.90	2.95	37.98	37.98	51.25	5,250.00

<< Summary for PZDGS610

### PZDIS619 - 6 1/2" Index Sub

BHA #	Rotary Hours	Slide Hours	Total Hours	Circ. Hours	Below Rotary	Amount Drilled
1	32.90	2.95	37.98	37.98	51.25	5,250.00
1	32.90	2.95	37.98	37.98	51.25	5,250.00
2	65.80	5.90	75.97	75.97	102.50	10,500.00

<< Summary for PZDIS619

<< Summary for MWD



**JOB NO.:** CO16572  
**Company:** URSA Resources  
**LOCATION:** Monument Ridge B Pad  
**RIG NAME:** Capstar 321  
**STATE:** Colorado  
**COUNTY:** Garfield  
**WELL NAME:** Monument Ridge B  
 44C-08-07-95

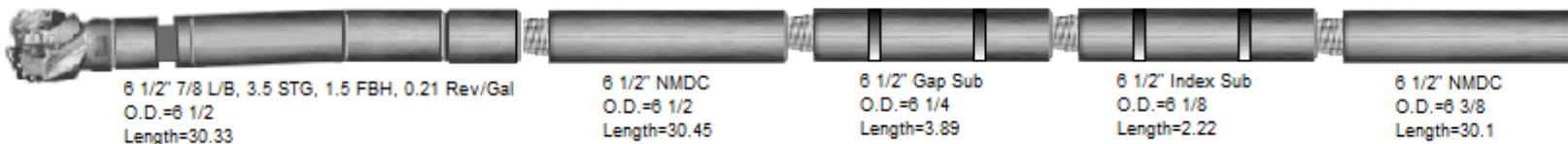
**FIELD:** Battlement Mesa  
**Township:** 7S  
**SECT\ RANGE:** 8 95W

COMMENT

## BHA Summary Report for JOB

#	TIME IN - OUT			DEPTHS		Footage			ROP			RPM	FLOW	Incl.		Azimuth		Weight Ranges		
	Time IN	Time Out	Hrs.	IN	OUT	Rotary	Slide	Total	AVG.	Rotary	Slide		Rate	IN	OUT	IN	OUT	SO	PU	RAB
1	27-Oct-16 @ 12:15	29-Oct-16 @ 15:30	51.25	1725.0	6975.0	5017.0	233.0	5250.0	146.44	152.5	79.0	0-45	400-460	.0	.0	.0	.0	60-75	70-125	65-100
				Hours>		32.90	2.95	35.85												

Security MM55 5x14s  
 O.D.=7 7/8  
 Length=1





# Well Information

**BHA #** 1

**JOB NO.:** CO16572  
**Company:** URSA Resources  
**LOCATION:** Monument Ridge B Pad  
**RIG NAME:** Capstar 321  
**STATE:** Colorado  
**COUNTY:** Garfield

**FIELD:** Battlement Mesa  
**Township:** 7S  
**SECT. RANGE:** 8 95W  
**Lead DD:** Stephen Pickering  
**Co. Man:** Nate Gill  
**BHA TYPE:** Steerable Assembly

**WELL NAME:** Monument Ridge B 44C-08-07-95

## BHA Summary Information

TIME IN - OUT		Rotary Hours	33.68	Start Depth	1725.00	RPM	Flow Rate
Start Time	End Time	Circ Hrs Tot/Only	38.57 / 1.93	End Depth	6975.00	Range	
27-Oct-16 @ 12:15	29-Oct-16 @ 15:30	Slide Hours	2.95	Percent Rotary:	95.56	0 -45	400
		Below Rotary Hrs.	51.25	Percent Slide:	4.44		-460
Total Drilled:		5250.00	Avg. Total ROP:	143.31	Incl.	Azimuth	
Total Rotary Drilled:		5017.00	Avg. Rotary ROP:	148.95	IN	OUT	OUT
Total Drilled Sliding:		233.00	Avg. Slide ROP:	78.98	.0	.0	.00
SPP	900 -2400	Weights	SO	60 -75	PU	70 -125	RAB
							65 -100
							Reason POOH
							TD

Bit Data								MOTOR DATA						Mud Data							
Security		Security MM55 5x14s						7/8 L/B, 3.5 STG, 1.5 FBH, 0.21 Rev/Gal						Type	Gel/Chem						
Type Bit				PDC				Model: Arrow						Pad OD		WT	9.35	GAS	0	Solids	6.5
TFA		0.751						MFG. Hunting						6 3/4		Vis	43	SAND	0.25	T °	104
JETS			14	14	14	14	14	Bend °		1.5	Stator/Rotor		7/8		PV	15	PH	9.6	Chlor	1500	
			0	0	0	0	0	Bit to Bend		6	Motor Diff		YP	13	WL	6.5	Oil %	0			
Bit Coding				IADC#				Rev/GAL		0.21		PUMPS		PUMP1		PUMP1					
IR	OR	DL	Loc	BS	G	ODL	NB Stab		0		NAME			Gardner Denver		Gardner Denver					
2	1	CT	S				Rotor Jet		0		Model			PZ-9		PZ-9					
Bit Drop:			323 PSI @ 460 GPM					Sensor Offsets				Type		Triplex		Triplex					
Comments				Sensor	55	Sonic	0	6.50		6.50											
				Gamma	0	DNsc	1725	9.00		9.00											
				Restiv	0	GYRO	0	95.00		95.00											
Comments				Stroke					95.00		95.00										
				Efficiency																	

Picking up directional tools to hold 10.58 INC through tangent drop to vertical hold to TD

## BHA Detail

#	Description	Serial #	I.D.	O.D.	Length	Sum	Top Conn
1	Security MM55 5x14s	12631072		7 7/8	1.00	1.00	4 1/2 REGP
2	6 1/2" 7/8 L/B, 3.5 STG, 1.5 FBH, 0.21 Rev/Gal	6253(BRT)	0	6 1/2	30.33	31.33	4 1/2 XHB
3	6 1/2" NMDC	DD650-022	2 3/8	6 1/2	30.45	61.78	4 1/2 XHB
4	6 1/2" Gap Sub	PZDGS610	2 7/8	6 1/4	3.89	65.67	4 1/2 XHB
5	6 1/2" Index Sub	PZDIS619	2 7/8	6 1/8	2.22	67.89	4 1/2 XHB
6	6 1/2" NMDC	DD650-005	2 3/8	6 3/8	30.10	97.99	4 1/2 XHB

6 1/2" NMDC  
O.D.=6 3/8  
Length=30.1

6 1/2" Index Sub  
O.D.=6 1/8  
Length=2.22

6 1/2" Gap Sub  
O.D.=6 1/4  
Length=3.89

6 1/2" NMDC  
O.D.=6 1/2  
Length=30.45

6 1/2" 7/8 L/B, 3.5 STG, 1.5 FBH, 0.21  
O.D.=6 1/2  
Length=30.33

Security MM55 5x14s  
O.D.=7 7/8  
Length=1





<b>JOB NO.:</b>	CO16572	<b>Report Time:</b>	2400	1 of 3
<b>Company:</b>	URSA Resources	<b>API JOB #</b>	05-045-22964-00	
<b>LOCATION:</b>	Monument Ridge B Pad	<b>WORK ORDER#</b>	CO16572	
<b>RIG NAME:</b>	Capstar 321	<b>FIELD:</b>	Battlement Mesa	
<b>STATE:</b>	Colorado	<b>Township:</b>	7S	
<b>COUNTY:</b>	Garfield	<b>SECT RANGE:</b>	8	95W
<b>WELL NAME:</b>	Monument Ridge B 44C-08-07-95			

From Thursday, October 27, 2016 at 0000 to Thursday, October 27, 2016 at 2400

DRILLING SUMMARY				Drilling Parameters							
Start Depth	1725.00	Rotary Hours	6.83	WOB	25	Pick UP	70	Slack Off	60	SPM	
End Depth	3079.00	Circulating Hours	0.00	RAB	65	SPP	1850	FlowRate	0 - 460	125	
Total Drilled:	1354.00	Avg. Total ROP:	172.85	Mud Data							
Total Rotary Drilled:	1277.00	Avg. Rotary ROP:	186.88	Type	Gel/Chem			PV	10	SOLID	3.5
Total Drilled Sliding:	77.00	Avg. Slide ROP:	77.00	Weight	8.9	GAS	0	YP	5	BHT°	0
Slide Hours:	1.00	Percent Rotary:	94.31	Viscosity	36	SAND	0.25	PH	11.5	Flow T°	85
Below Rotary Hrs.	19.25	Percent Slide:	5.69	Chlorides	1400	WL	7			Oil %	0
PERSONNEL				CASING					BHA		
Lead Directional :	Stephen Pickering			Size	Lb/ft	Set Depth		BHA # 1:Security MM55 5x14s, 6 1/2" 7/8 L/B, 3.5 STG, 1.5 FBH, 0.21 Rev/Gal, 6 1/2" NMDC, 6 1/2" Gap Sub, 6 1/2" Index Sub, 6 1/2" NMDC,			
Second Directional :	Sam Sisneros			8 5/8	24	1710					
MWD Operator1	Colin Chudy			Signature:							
MWD Operator2											
Directional Company:	Payzone										
Geologist:											
Company Man:	Nate Gill										
Incl. In:	12.92	Azm. In:	230.48	Incl. Out:	10.2	Azm. Out:	231.01				

#### GENERAL COMMENT

Drilling ahead @ 3079'

Date	Start Time	End Time	Hours	Start Depth	End Depth	Activity Code	COMMENT
27-Oct-16	00:00	06:00	6.00	1725	1725	Other	Run csg. & cement
27-Oct-16	06:00	07:00	1.00	1725	1725	Other	Skid
27-Oct-16	07:00	08:00	1.00	1725	1725	N/U BOPS	N/U BOPS
27-Oct-16	08:00	11:45	3.75	1725	1725	Test BOPS	Test BOPS
27-Oct-16	11:45	12:15	0.50	1725	1725	Change BHA	Change BHA, P/U tools
27-Oct-16	12:15	13:00	0.75	1725	1725	TIH	TIH
27-Oct-16	13:00	14:00	1.00	1725	1725	Other	Slip & Cut drill line
27-Oct-16	14:00	14:45	0.75	1725	1725	TIH	TIH
27-Oct-16	14:45	15:32	0.78	1725	1725	Drilling Cement	Drill Cement
27-Oct-16	15:32	16:02	0.50	1725	1799	Drilling	Drilling - (WOB:20;GPM :400;RPM:45)
27-Oct-16	16:02	16:13	0.18	1799	1799	Survey & Conn.	Survey & Conn.@1744' Inc 12.92° Azm 230.48°
27-Oct-16	16:13	16:38	0.42	1799	1884	Drilling	Drilling - (WOB:20;GPM :400;RPM:45)
27-Oct-16	16:38	16:42	0.07	1884	1884	Survey & Conn.	Survey & Conn.@1829' Inc 12.17° Azm 231.93°
27-Oct-16	16:42	17:05	0.38	1884	1970	Drilling	Drilling - (WOB:20;GPM :400;RPM:45)
27-Oct-16	17:05	17:10	0.08	1970	1970	Survey & Conn.	Survey & Conn.@1915' Inc 11.69° Azm 230.66°
27-Oct-16	17:10	17:30	0.33	1970	2055	Drilling	Drilling - (WOB:20;GPM :400;RPM:45)
27-Oct-16	17:30	17:35	0.08	2055	2055	Survey & Conn.	Survey & Conn.@2000' Inc 10.99° Azm 229.08°

Date	Start Time	End Time	Hours	Start Depth	End Depth	Activity Code	COMMENT
27-Oct-16	17:35	17:45	0.17	2055	2065	Sliding	Drilling - (WOB:20;GPM :400;RPM:0)
27-Oct-16	17:45	18:05	0.33	2065	2141	Drilling	Drilling - (WOB:25;GPM :460;RPM:45)
27-Oct-16	18:05	18:10	0.08	2141	2141	Survey & Conn.	Survey & Conn.@2086' Inc 10.77° Azm 234.71°
27-Oct-16	18:10	18:40	0.50	2141	2226	Drilling	Drilling - (WOB:25;GPM :460;RPM:45)
27-Oct-16	18:40	18:45	0.08	2226	2226	Survey & Conn.	Survey & Conn.@2171' Inc 10.55° Azm 232.86°
27-Oct-16	18:45	19:05	0.33	2226	2311	Drilling	Drilling - (WOB:25;GPM :460;RPM:45)
27-Oct-16	19:05	19:10	0.08	2311	2311	Survey & Conn.	Survey & Conn.@2256' Inc 10.15° Azm 231.76°
27-Oct-16	19:10	19:35	0.42	2311	2397	Drilling	Drilling - (WOB:25;GPM :460;RPM:45)
27-Oct-16	19:35	19:40	0.08	2397	2397	Survey & Conn.	Survey & Conn.@2342' Inc 9.49° Azm 230.35°
27-Oct-16	19:40	20:00	0.33	2397	2482	Drilling	Drilling - (WOB:25;GPM :460;RPM:45)
27-Oct-16	20:00	20:05	0.08	2482	2482	Survey & Conn.	Survey & Conn.@2427' Inc 8.72° Azm 230.33°
27-Oct-16	20:05	20:15	0.17	2482	2494	Sliding	Sliding - (WOB:20;GPM :400;TFO:20R))
27-Oct-16	20:15	20:30	0.25	2494	2568	Drilling	Drilling - (WOB:25;GPM :460;RPM:45)
27-Oct-16	20:30	20:35	0.08	2568	2568	Survey & Conn.	Survey & Conn.@2513' Inc 9.7° Azm 232.71°
27-Oct-16	20:35	20:45	0.17	2568	2583	Sliding	Sliding - (WOB:20;GPM :400;TFO:0))
27-Oct-16	20:45	21:05	0.33	2583	2653	Drilling	Drilling - (WOB:25;GPM :460;RPM:45)
27-Oct-16	21:05	21:10	0.08	2653	2653	Survey & Conn.	Survey & Conn.@2598' Inc 10.81° Azm 234.09°
27-Oct-16	21:10	21:35	0.42	2653	2738	Drilling	Drilling - (WOB:25;GPM :460;RPM:45)
27-Oct-16	21:35	21:40	0.08	2738	2738	Survey & Conn.	Survey & Conn.@2683' Inc 10.22° Azm 234.19°
27-Oct-16	21:40	21:55	0.25	2738	2758	Sliding	Sliding - (WOB:25;GPM :460;TFO:0))
27-Oct-16	21:55	22:15	0.33	2758	2823	Drilling	Drilling - (WOB:25;GPM :460;RPM:45)
27-Oct-16	22:15	22:20	0.08	2823	2823	Survey & Conn.	Survey & Conn.@2768' Inc 11.65° Azm 232.37°
27-Oct-16	22:20	22:45	0.42	2823	2909	Drilling	Drilling - (WOB:25;GPM :460;RPM:45)
27-Oct-16	22:45	22:50	0.08	2909	2909	Survey & Conn.	Survey & Conn.@2854' Inc 11.07° Azm 231.85°
27-Oct-16	22:50	23:10	0.33	2909	2994	Drilling	Drilling - (WOB:25;GPM :460;RPM:45)
27-Oct-16	23:10	23:15	0.08	2994	2994	Survey & Conn.	Survey & Conn.@2939' Inc 10.2° Azm 231.01°
27-Oct-16	23:15	23:30	0.25	2994	3014	Sliding	Sliding - (WOB:25;GPM :460;TFO:360G))
27-Oct-16	23:30	23:55	0.42	3014	3079	Drilling	Drilling - (WOB:25;GPM :460;RPM:45)
27-Oct-16	23:55	24:00	0.08	3079	3079	Survey & Conn.	Survey & Conn.@3024' Inc 11.69° Azm 232.72°



<b>JOB NO.:</b>	CO16572	<b>Report Time:</b>	2400	2 of 3
<b>Company:</b>	URSA Resources	<b>API JOB #</b>	05-045-22964-00	
<b>LOCATION:</b>	Monument Ridge B Pad	<b>WORK ORDER#</b>	CO16572	
<b>RIG NAME:</b>	Capstar 321	<b>FIELD:</b>	Battlement Mesa	
<b>STATE:</b>	Colorado	<b>Township:</b>	7S	
<b>COUNTY:</b>	Garfield	<b>SECT RANGE:</b>	8	95W
<b>WELL NAME:</b>	Monument Ridge B 44C-08-07-95			

From Friday, October 28, 2016 at 0000 to Friday, October 28, 2016 at 2400

DRILLING SUMMARY				Drilling Parameters						
Start Depth	3079.00	Rotary Hours	18.82	WOB	25	Pick UP	100	Slack Off	70	SPM
End Depth	5958.00	Circulating Hours	0.58	RAB	85	SPP	2000	FlowRate	460 - 460	125
Total Drilled:	2879.00	Avg. Total ROP:	141.47	Mud Data						
Total Rotary Drilled:	2743.00	Avg. Rotary ROP:	145.78	Type	Gel/Chem		PV	15	SOLID	6.5
Total Drilled Sliding:	136.00	Avg. Slide ROP:	88.70	Weight	9.35	GAS	0	YP	13	BHT °
Slide Hours:	1.53	Percent Rotary:	95.28	Viscosity	43	SAND	0.25	PH	9.6	Flow T °
Below Rotary Hrs.	24.00	Percent Slide:	4.72	Chlorides	1500	WL	6.5	Oil %		0

PERSONNEL						CASING			BHA
Lead Directional :		Stephen Pickering				Size	Lb/ft	Set Depth	BHA # 1:Security MM55 5x14s, 6 1/2" 7/8 L/B, 3.5 STG, 1.5 FBH, 0.21 Rev/Gal, 6 1/2" NMDC, 6 1/2" Gap Sub, 6 1/2" Index Sub, 6 1/2" NMDC,
Second Directional :		Sam Sisneros				8 5/8	24	1710	
MWD Operator1		Colin Chudy				Signature:			
MWD Operator2									
Directional Company:		Payzone							
Geologist:									
Company Man:		Nate Gill							
Incl. In:	10.2	Azm. In:	231.01	Incl. Out:	0.57	Azm. Out:	131.34		

#### GENERAL COMMENT

Drilling ahead @ 5958'

Date	Start Time	End Time	Hours	Start Depth	End Depth	Activity Code	COMMENT
28-Oct-16	00:00	00:25	0.42	3079	3165	Drilling	Drilling - (WOB:25;GPM :460;RPM:45)
28-Oct-16	00:25	00:30	0.08	3165	3165	Survey & Conn.	Survey & Conn.@3110' Inc 11.34° Azm 231.54°
28-Oct-16	00:30	00:50	0.33	3165	3250	Drilling	Drilling - (WOB:25;GPM :460;RPM:45)
28-Oct-16	00:50	00:55	0.08	3250	3250	Survey & Conn.	Survey & Conn.@3195' Inc 10.72° Azm 232.2°
28-Oct-16	00:55	01:30	0.58	3250	3335	Drilling	Drilling - (WOB:25;GPM :460;RPM:45)
28-Oct-16	01:30	01:35	0.08	3335	3335	Survey & Conn.	Survey & Conn.@3280' Inc 10.11° Azm 231.67°
28-Oct-16	01:35	02:00	0.42	3335	3418	Drilling	Drilling - (WOB:25;GPM :460;RPM:45)
28-Oct-16	02:00	02:05	0.08	3418	3418	Survey & Conn.	Survey & Conn.@3366' Inc 9.8° Azm 231.19°
28-Oct-16	02:05	02:30	0.42	3418	3506	Drilling	Drilling - (WOB:25;GPM :460;RPM:45)
28-Oct-16	02:30	02:35	0.08	3506	3506	Survey & Conn.	Survey & Conn.@3451' Inc 8.96° Azm 229.91°
28-Oct-16	02:35	02:50	0.25	3506	3526	Sliding	Sliding - (WOB:25;GPM :460;TFO:360G))
28-Oct-16	02:50	03:15	0.42	3526	3591	Drilling	Drilling - (WOB:25;GPM :460;RPM:45)
28-Oct-16	03:15	03:20	0.08	3591	3591	Survey & Conn.	Survey & Conn.@3536' Inc 10.55° Azm 231.01°
28-Oct-16	03:20	03:55	0.58	3591	3677	Drilling	Drilling - (WOB:25;GPM :460;RPM:45)
28-Oct-16	03:55	04:00	0.08	3677	3677	Survey & Conn.	Survey & Conn.@3622' Inc 10.06° Azm 231.45°
28-Oct-16	04:00	04:15	0.25	3677	3697	Sliding	Sliding - (WOB:25;GPM :460;TFO:360G))
28-Oct-16	04:15	04:35	0.33	3697	3762	Drilling	Drilling - (WOB:25;GPM :460;RPM:45)

Date	Start Time	End Time	Hours	Start Depth	End Depth	Activity Code	COMMENT
28-Oct-16	04:35	04:40	0.08	3762	3762	Survey & Conn.	Survey & Conn.@3707' Inc 11.07° Azm 229.43°
28-Oct-16	04:40	05:08	0.47	3762	3847	Drilling	Drilling - (WOB:25;GPM :460;RPM:45)
28-Oct-16	05:08	05:15	0.12	3847	3847	Survey & Conn.	Survey & Conn.@3792' Inc 10.06° Azm 228.77°
28-Oct-16	05:15	05:25	0.17	3847	3862	Sliding	Sliding - (WOB:25;GPM :460;TFO:15R))
28-Oct-16	05:25	05:50	0.42	3862	3933	Drilling	Drilling - (WOB:25;GPM :460;RPM:45)
28-Oct-16	05:50	05:55	0.08	3933	3933	Survey & Conn.	Survey & Conn.@3878' Inc 10.63° Azm 231.67°
28-Oct-16	05:55	06:29	0.57	3933	4018	Drilling	Drilling - (WOB:25;GPM :460;RPM:45)
28-Oct-16	06:29	06:35	0.10	4018	4018	Survey & Conn.	Survey & Conn.@3963' Inc 9.57° Azm 230.79°
28-Oct-16	06:35	06:45	0.17	4018	4038	Sliding	Sliding - (WOB:25;GPM :460;TFO:0G))
28-Oct-16	06:45	07:09	0.40	4038	4104	Drilling	Drilling - (WOB:25;GPM :460;RPM:45)
28-Oct-16	07:09	07:15	0.10	4104	4104	Survey & Conn.	Survey & Conn.@4049' Inc 10.33° Azm 231.89°
28-Oct-16	07:15	07:50	0.58	4104	4189	Drilling	Drilling - (WOB:25;GPM :460;RPM:45)
28-Oct-16	07:50	07:56	0.10	4189	4189	Survey & Conn.	Survey & Conn.@4134' Inc 10.02° Azm 230.75°
28-Oct-16	07:56	08:28	0.53	4189	4274	Drilling	Drilling - (WOB:25;GPM :460;RPM:45)
28-Oct-16	08:28	08:35	0.12	4274	4274	Survey & Conn.	Survey & Conn.@4219' Inc 8.92° Azm 232.59°
28-Oct-16	08:35	09:10	0.58	4274	4359	Drilling	Drilling - (WOB:25;GPM :460;RPM:45)
28-Oct-16	09:10	09:45	0.58	4359	4359	Rig Service-Inhole	Rig Service-Inhole
28-Oct-16	09:45	09:50	0.08	4359	4359	Survey & Conn.	Survey & Conn.@4304' Inc 8.09° Azm 231.93°
28-Oct-16	09:50	10:22	0.53	4359	4445	Drilling	Drilling - (WOB:25;GPM :460;RPM:45)
28-Oct-16	10:22	10:28	0.10	4445	4445	Survey & Conn.	Survey & Conn.@4390' Inc 7.12° Azm 233.98°
28-Oct-16	10:28	11:04	0.60	4445	4530	Drilling	Drilling - (WOB:25;GPM :460;RPM:45)
28-Oct-16	11:04	11:10	0.10	4530	4530	Survey & Conn.	Survey & Conn.@4475' Inc 6.33° Azm 235.14°
28-Oct-16	11:10	11:45	0.58	4530	4616	Drilling	Drilling - (WOB:25;GPM :460;RPM:45)
28-Oct-16	11:45	11:51	0.10	4616	4616	Survey & Conn.	Survey & Conn.@4561' Inc 5.41° Azm 232.64°
28-Oct-16	11:51	12:30	0.65	4616	4701	Drilling	Drilling - (WOB:25;GPM :460;RPM:45)
28-Oct-16	12:30	12:37	0.12	4701	4701	Survey & Conn.	Survey & Conn.@4646' Inc 4.92° Azm 230.35°
28-Oct-16	12:37	12:49	0.20	4701	4719	Sliding	Sliding - (WOB:25;GPM :460;TFO:170L))
28-Oct-16	12:49	13:20	0.52	4719	4787	Drilling	Drilling - (WOB:25;GPM :460;RPM:45)
28-Oct-16	13:20	13:28	0.13	4787	4787	Survey & Conn.	Survey & Conn.@4732' Inc 3.47° Azm 227.28°
28-Oct-16	13:28	13:44	0.27	4787	4810	Sliding	Sliding - (WOB:25;GPM :460;TFO:170R))
28-Oct-16	13:44	14:08	0.40	4810	4872	Drilling	Drilling - (WOB:25;GPM :460;RPM:45)
28-Oct-16	14:08	14:15	0.12	4872	4872	Survey & Conn.	Survey & Conn.@4817' Inc 1.54° Azm 204.12°
28-Oct-16	14:15	14:50	0.58	4872	4957	Drilling	Drilling - (WOB:25;GPM :460;RPM:45)
28-Oct-16	14:50	14:55	0.08	4957	4957	Survey & Conn.	Survey & Conn.@4902' Inc 1.1° Azm 187.77°
28-Oct-16	14:55	15:32	0.62	4957	5043	Drilling	Drilling - (WOB:25;GPM :460;RPM:45)
28-Oct-16	15:32	15:38	0.10	5043	5043	Survey & Conn.	Survey & Conn.@4988' Inc 1.05° Azm 192.65°
28-Oct-16	15:38	16:18	0.67	5043	5128	Drilling	Drilling - (WOB:25;GPM :460;RPM:45)
28-Oct-16	16:18	16:24	0.10	5128	5128	Survey & Conn.	Survey & Conn.@5073' Inc 1.19° Azm 176.12°
28-Oct-16	16:24	16:38	0.23	5128	5148	Sliding	Sliding - (WOB:25;GPM :460;TFO:350M))
28-Oct-16	16:38	17:10	0.53	5148	5213	Drilling	Drilling - (WOB:25;GPM :460;RPM:45)
28-Oct-16	17:10	17:15	0.08	5213	5213	Survey & Conn.	Survey & Conn.@5158' Inc 0.76° Azm 340.04°
28-Oct-16	17:15	17:55	0.67	5213	5299	Drilling	Drilling - (WOB:25;GPM :460;RPM:45)
28-Oct-16	17:55	18:00	0.08	5299	5299	Survey & Conn.	Survey & Conn.@5244' Inc 0.46° Azm 10.57°
28-Oct-16	18:00	18:45	0.75	5299	5384	Drilling	Drilling - (WOB:25;GPM :460;RPM:45)
28-Oct-16	18:45	18:50	0.08	5384	5384	Survey & Conn.	Survey & Conn.@5329' Inc 0.31° Azm 29.61°
28-Oct-16	18:50	19:35	0.75	5384	5470	Drilling	Drilling - (WOB:25;GPM :460;RPM:45)
28-Oct-16	19:35	19:40	0.08	5470	5470	Survey & Conn.	Survey & Conn.@5415' Inc 0.35° Azm 137.19°
28-Oct-16	19:40	20:15	0.58	5470	5555	Drilling	Drilling - (WOB:25;GPM :460;RPM:45)

Date	Start Time	End Time	Hours	Start Depth	End Depth	Activity Code	COMMENT
28-Oct-16	20:15	20:20	0.08	5555	5555	Survey & Conn.	Survey & Conn.@5500' Inc 0.44° Azm 124.71°
28-Oct-16	20:20	21:00	0.67	5555	5640	Drilling	Drilling - (WOB:25;GPM :460;RPM:45)
28-Oct-16	21:00	21:05	0.08	5640	5640	Survey & Conn.	Survey & Conn.@5585' Inc 0.35° Azm 145.36°
28-Oct-16	21:05	21:50	0.75	5640	5726	Drilling	Drilling - (WOB:25;GPM :460;RPM:45)
28-Oct-16	21:50	21:55	0.08	5726	5726	Survey & Conn.	Survey & Conn.@5671' Inc 0.57° Azm 120°
28-Oct-16	21:55	22:35	0.67	5726	5811	Drilling	Drilling - (WOB:25;GPM :460;RPM:45)
28-Oct-16	22:35	22:40	0.08	5811	5811	Survey & Conn.	Survey & Conn.@5756' Inc 0.53° Azm 119.48°
28-Oct-16	22:40	23:20	0.67	5811	5897	Drilling	Drilling - (WOB:25;GPM :460;RPM:45)
28-Oct-16	23:20	23:25	0.08	5897	5897	Survey & Conn.	Survey & Conn.@5842' Inc 0.57° Azm 131.34°
28-Oct-16	23:25	24:00	0.58	5897	5958	Drilling	Drilling - (WOB:25;GPM :460;RPM:45)





<b>JOB NO.:</b>	CO16572	<b>Report Time:</b>	2400	3 of 3
<b>Company:</b>	URSA Resources	<b>API JOB #</b>	05-045-22964-00	
<b>LOCATION:</b>	Monument Ridge B Pad	<b>WORK ORDER#</b>	CO16572	
<b>RIG NAME:</b>	Capstar 321	<b>FIELD:</b>	Battlement Mesa	
<b>STATE:</b>	Colorado	<b>Township:</b>	7S	
<b>COUNTY:</b>	Garfield	<b>SECT RANGE:</b>	8	95W
<b>WELL NAME:</b>	Monument Ridge B 44C-08-07-95			

From Saturday, October 29, 2016 at 0000 to Saturday, October 29, 2016 at 2400

DRILLING SUMMARY				Drilling Parameters							
Start Depth	3079.00	Rotary Hours	18.82	WOB	25	Pick UP	125	Slack Off	75	SPM	
End Depth	5958.00	Circulating Hours	0.58	RAB	100	SPP	2400	FlowRate	460 - 460	125	
Total Drilled:	2879.00	Avg. Total ROP:	141.47	Mud Data							
Total Rotary Drilled:	2743.00	Avg. Rotary ROP:	145.78	Type	Gel/Chem			PV	15	SOLID	6.5
Total Drilled Sliding:	136.00	Avg. Slide ROP:	88.70	Weight	9.35	GAS	0	YP	13	BHT°	0
Slide Hours:	1.53	Percent Rotary:	95.28	Viscosity	43	SAND	0.25	PH	9.6	Flow T°	104
Below Rotary Hrs.	24.00	Percent Slide:	4.72	Chlorides	1500	WL	6.5			Oil %	0
PERSONNEL				CASING					BHA		
Lead Directional :	Stephen Pickering			Size	Lb/ft	Set Depth		BHA # 1:Security MM55 5x14s, 6 1/2" 7/8 L/B, 3.5 STG, 1.5 FBH, 0.21 Rev/Gal, 6 1/2" NMDC, 6 1/2" Gap Sub, 6 1/2" Index Sub, 6 1/2" NMDC,			
Second Directional :	Sam Sisneros			8 5/8	24	1710					
MWD Operator1	Colin Chudy			Signature:							
MWD Operator2											
Directional Company:	Payzone										
Geologist:											
Company Man:	Nate Gill										
Incl. In:	0.57	Azm. In:	131.34	Incl. Out:	0	Azm. Out:	0				

#### GENERAL COMMENT

Date	Start Time	End Time	Hours	Start Depth	End Depth	Activity Code	COMMENT
29-Oct-16	00:00	00:05	0.08	5958	5982	Drilling	Drilling - (WOB:25;GPM :460;RPM:45)
29-Oct-16	00:05	00:10	0.08	5982	5982	Survey & Conn.	Survey & Conn.@5927' Inc 0.83° Azm 139.66°
29-Oct-16	00:10	00:35	0.42	5982	6002	Sliding	Sliding - (WOB:25;GPM :460;TFO:300M))
29-Oct-16	00:35	01:10	0.58	6002	6067	Drilling	Drilling - (WOB:25;GPM :460;RPM:45)
29-Oct-16	01:10	01:15	0.08	6067	6067	Survey & Conn.	Survey & Conn.@6012' Inc 0.88° Azm 290.64°
29-Oct-16	01:15	02:00	0.75	6067	6153	Drilling	Drilling - (WOB:25;GPM :460;RPM:45)
29-Oct-16	02:00	02:05	0.08	6153	6153	Survey & Conn.	Survey & Conn.@6098' Inc 1.24° Azm 287.44°
29-Oct-16	02:05	02:45	0.67	6153	6238	Drilling	Drilling - (WOB:25;GPM :460;RPM:45)
29-Oct-16	02:45	02:50	0.08	6238	6238	Survey & Conn.	Survey & Conn.@6183' Inc 0.88° Azm 276.54°
29-Oct-16	02:50	03:30	0.67	6238	6324	Drilling	Drilling - (WOB:25;GPM :460;RPM:45)
29-Oct-16	03:30	03:35	0.08	6324	6324	Survey & Conn.	Survey & Conn.@6269' Inc 0.57° Azm 280.62°
29-Oct-16	03:35	04:10	0.58	6324	6409	Drilling	Drilling - (WOB:25;GPM :460;RPM:45)
29-Oct-16	04:10	04:15	0.08	6409	6409	Survey & Conn.	Survey & Conn.@6354' Inc 0.62° Azm 310.11°
29-Oct-16	04:15	05:02	0.78	6409	6494	Drilling	Drilling - (WOB:25;GPM :460;RPM:45)
29-Oct-16	05:02	05:08	0.10	6494	6494	Survey & Conn.	Survey & Conn.@6439' Inc 0.45° Azm 320.87°
29-Oct-16	05:08	05:45	0.62	6494	6580	Drilling	Drilling - (WOB:25;GPM :460;RPM:45)
29-Oct-16	05:45	05:53	0.13	6580	6580	Survey & Conn.	Survey & Conn.@6525' Inc 0.26° Azm 321.58°

Date	Start Time	End Time	Hours	Start Depth	End Depth	Activity Code	COMMENT
29-Oct-16	05:53	06:30	0.62	6580	6665	Drilling	Drilling - (WOB:25;GPM :460;RPM:45)
29-Oct-16	06:30	06:45	0.25	6665	6665	Survey & Conn.	Survey & Conn.@6610' Inc 0.44° Azm 313.1°
29-Oct-16	06:45	07:26	0.68	6665	6750	Drilling	Drilling - (WOB:25;GPM :460;RPM:45)
29-Oct-16	07:26	07:32	0.10	6750	6750	Survey & Conn.	Survey & Conn.@6695' Inc 0.75° Azm 313.67°
29-Oct-16	07:32	08:12	0.67	6750	6836	Drilling	Drilling - (WOB:25;GPM :460;RPM:45)
29-Oct-16	08:12	08:16	0.07	6836	6836	Survey & Conn.	Survey & Conn.@6781' Inc 0.31° Azm 296.45°
29-Oct-16	08:16	09:01	0.75	6836	6921	Drilling	Drilling - (WOB:25;GPM :460;RPM:45)
29-Oct-16	09:01	09:06	0.08	6921	6921	Survey & Conn.	Survey & Conn.@6866' Inc 0.44° Azm 264.67°
29-Oct-16	09:06	09:41	0.58	6921	6975	Drilling	Drilling - (WOB:25;GPM :460;RPM:45)
29-Oct-16	09:41	09:49	0.13	6975	6975	Survey & Conn.	Survey & Conn.@6920' Inc 0.44° Azm 251.27°
29-Oct-16	09:49	11:10	1.35	6975	6975	Circulating	Circulating
29-Oct-16	11:10	15:00	3.83	6975	6975	POOH	POOH
29-Oct-16	15:00	15:30	0.50	6975	6975	Change BHA	Change BHA, L/D Tools

**BHA # 1****Mud Motor Report**

**JOB NO.:** CO16572  
**Company:** URSA Resources  
**LOCATION:** Monument Ridge B Pad  
**RIG NAME:** Capstar 321  
**STATE:** Colorado  
**COUNTY:** Garfield

**FIELD:** Battlement Mesa  
**Township:** 7S  
**Range** 95W  
**Lead DD:** Stephen Pickering  
**Co. Man:** Nate Gill

**WELL NAME:** Monument Ridge B 44C-08-07155 **Motor Failed?: NO**

Time and Depths (This BHA)	MOTOR DATA	Drilling Parameters
<b>Date In:</b> 27-Oct-16 @ 12:15	<b>Desc:</b> 7/8 L/B, 3.5 STG, 1.5 FBH, 0.21	<b>SO/PU:</b> 60 - 75 / 70-125
<b>Date Out:</b> 29-Oct-16 @ 15:30	<b>MFG.:</b> Hunting	<b>Rot Wt:</b> 65-100
<b>Hrs In Hole:</b> 51.25	<b>BHA Circ/ All BHA:</b> 38.57 / 37.98	<b>WOB:</b> 10 - 25
<b>Start Depth:</b> 1725.00	<b>Motor SN:</b> 6253(BRT)	<b>TORQ:</b> 3500 - 14000
<b>End Depth:</b> 6975.00	<b>Pad OD:</b> 6 3/4	<b>SPP:</b> 900 - 2400
<b>Total Drilled:</b> 5250.00	<b>NB Stab:</b> 0	<b>Motor RPM:</b> 84 - 97
<b>Avg. Total ROP:</b> 143.31	<b>Bit to Bend:</b> 6	<b>Rotary RPM:</b> 45 - 45
<b>Circ Hrs:Tot/Only</b> 38.57 / 1.93	<b>Bent Hsg / Sub:</b> 1.5 / 0	<b>Flow Rate:</b> 400 - 460
<b>Percent Slide:</b> 4.44	<b>Lobe/Stage:</b> 7/8 / 3.5	<b>Avg Diff:</b>
<b>Percent Hrs:</b> 8.05	<b>Rev/GAL:</b> 0.21	<b>Stall Pres.:</b>
<b>Slide Hours:</b> 2.95	<b>Rotor Jet:</b> 0	<b>Off Bot Pres.:</b>
<b>Total Sliding:</b> 233.00	<b>Prop BUR:</b>	<b>Bit Record</b> Security / Security MM55 5x14s
<b>Avg. Slide ROP:</b> 78.98	<b>Act BUR:</b>	
<b>Percent Rotary:</b> 95.56	<b>Stator Clearance:</b> 0	<b>Run #:</b> 1
<b>Percent Hrs:</b> 91.95	<b>Lower Stab OD:</b>	<b>Type Bit:</b> PDC
<b>Rot / Total Hrs:</b> 33.68 / 36.63	<b>Upper Stab OD:</b>	<b>IADC#:</b> TFA: 0.751
<b>Rotary Drilled:</b> 5017.00	<b>Extended Motor?</b> NO	<b>JETS:</b> 5-14
<b>Avg. Rotary ROP:</b> 148.95	<b>Number of Stalls:</b> 0	<b>Bit Drop:</b> 323 PSI @ 460 GPM
<b>Reason POOH:</b> TD	<b>Stall Duration:</b> 0	<b>Cond.:</b> Green

**Mud Data**

**Type** Gel/Chem **WT:** 9.35 **Vis:** 43 **WL:** 6.5 **PV:** 15 **Flow T %:** 104  
**SAND:** 0.25 **Chlor:** 1500 **GAS:** 0 **SOL:** 6.5 **Oil %:** 0 **YP:** 13 **PH:** 9.6 **Bottom Hole T %:** 0

**Formation:****EXPANDED REASON PULLED:**

TD

**BHA PERFORMANCE:**

As expected

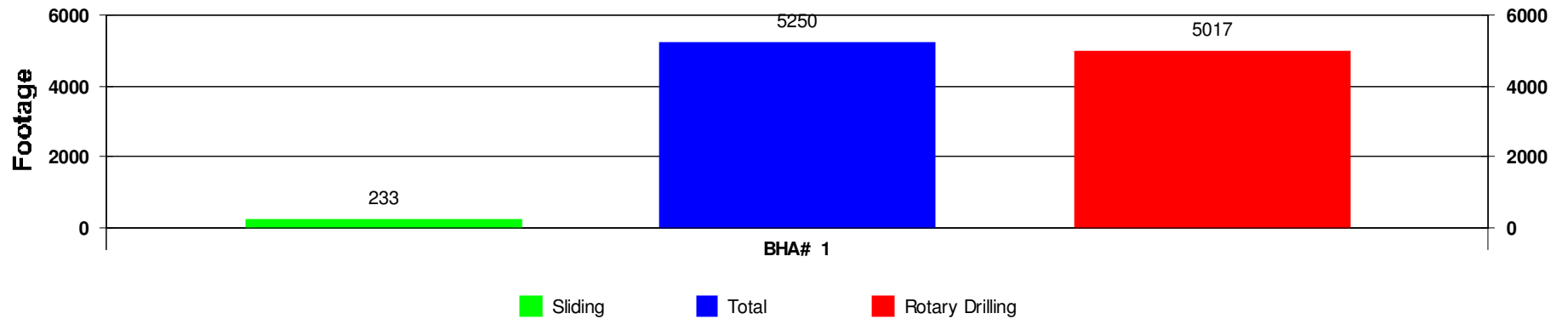
**ADDITIONAL COMMENTS: (Expands to next page if necessary)**



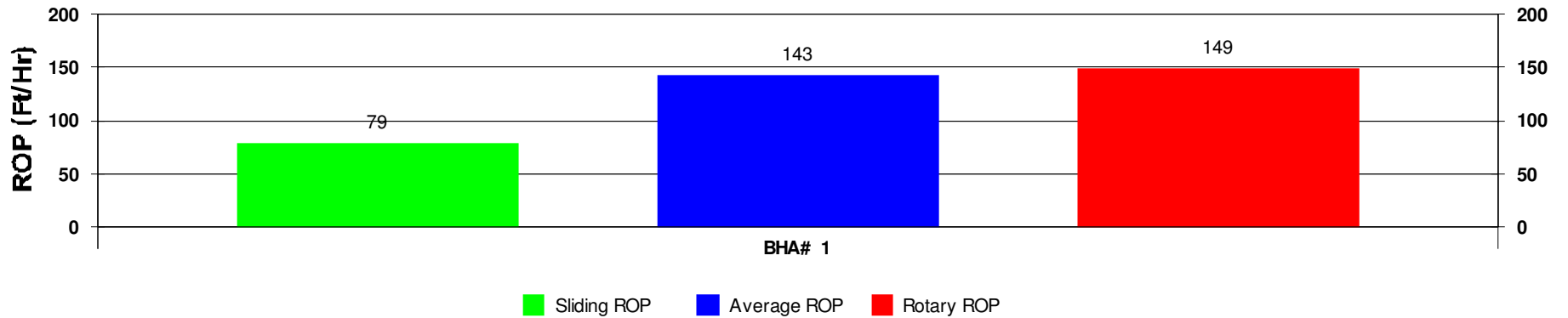


JOB NO.:	CO16572	FIELD:	Battlement Mesa	
Company:	URSA Resources	Township:	7S	
LOCATION:	Monument Ridge B Pad	SECT\	RANGE: 8	95W
RIG NAME:	Capstar 321	COMMENT		
STATE:	Colorado			
COUNTY:	Garfield			
WELL NAME:	Monument Ridge B 44C-08-07-95			

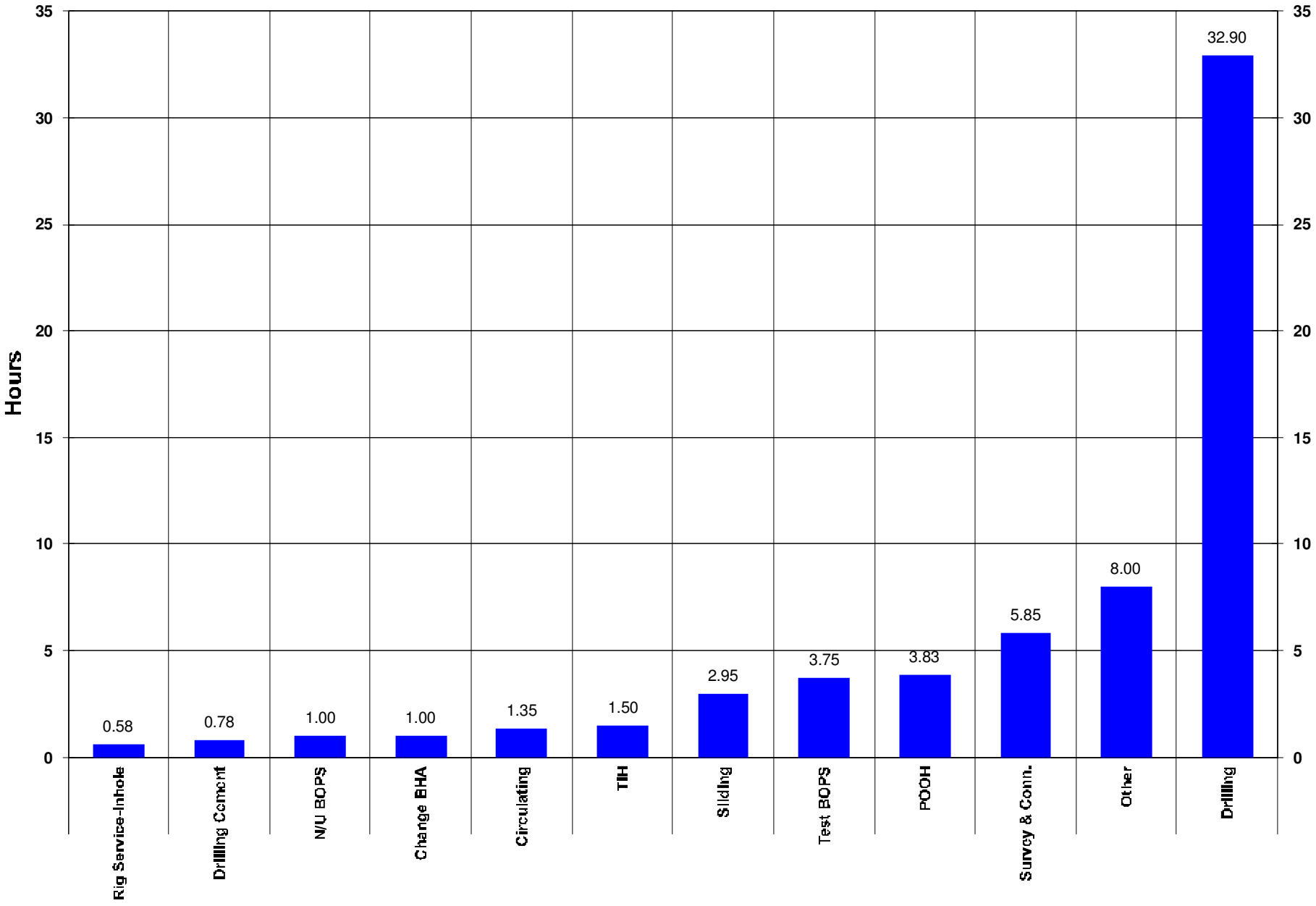
### Footage Drilled with BHA



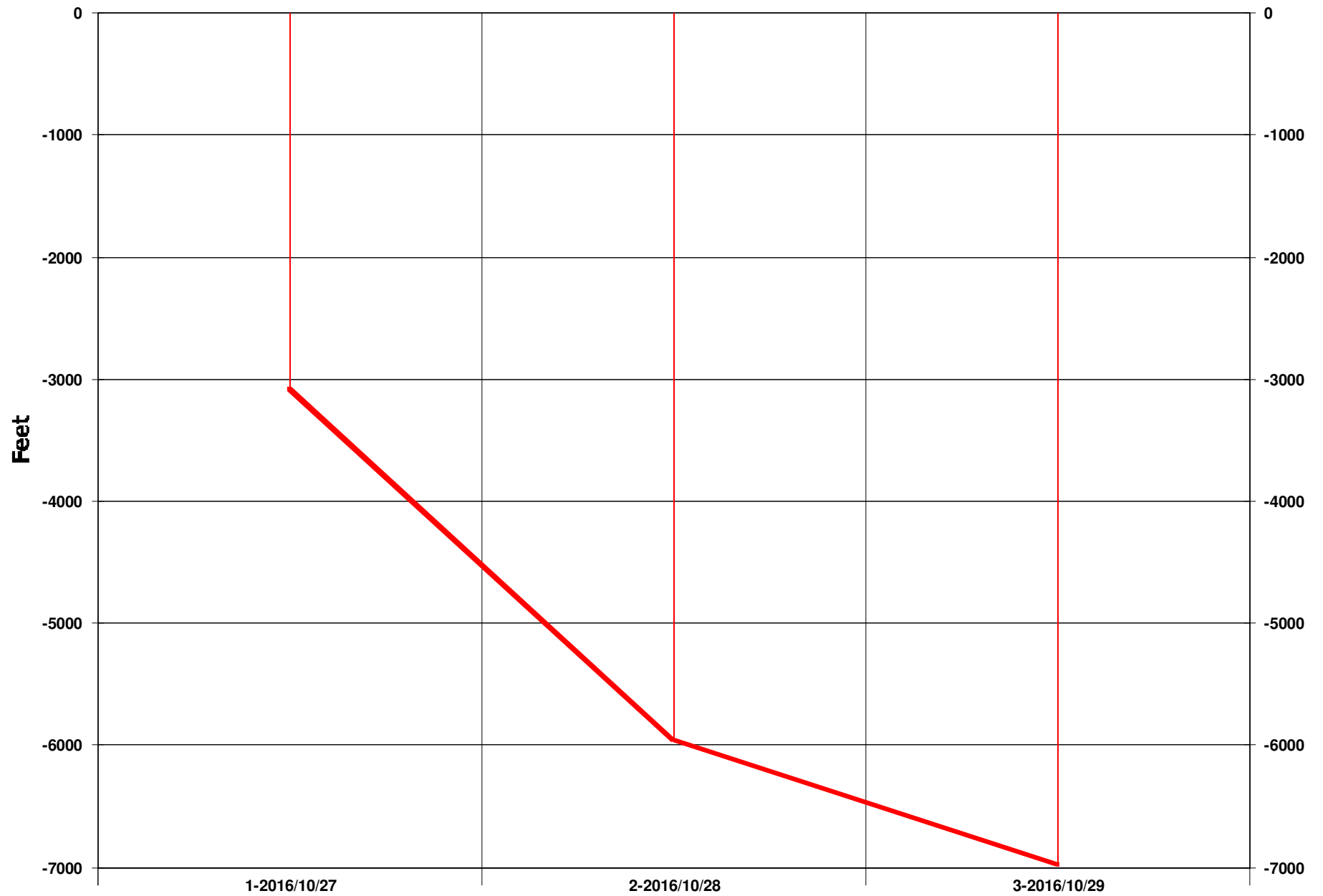
### ROP vs BHA



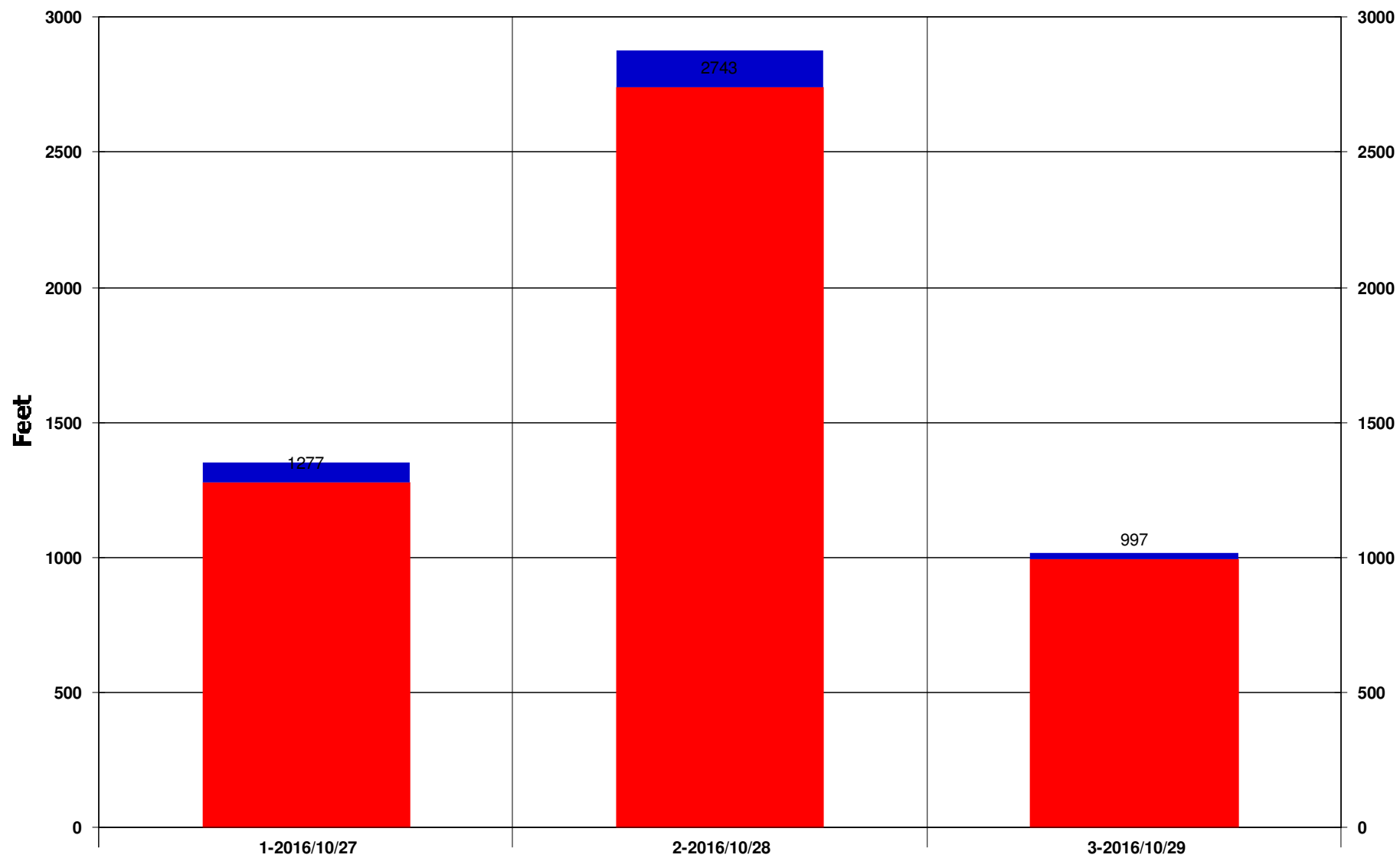
Activity Histogram



Measured Depth vs Days

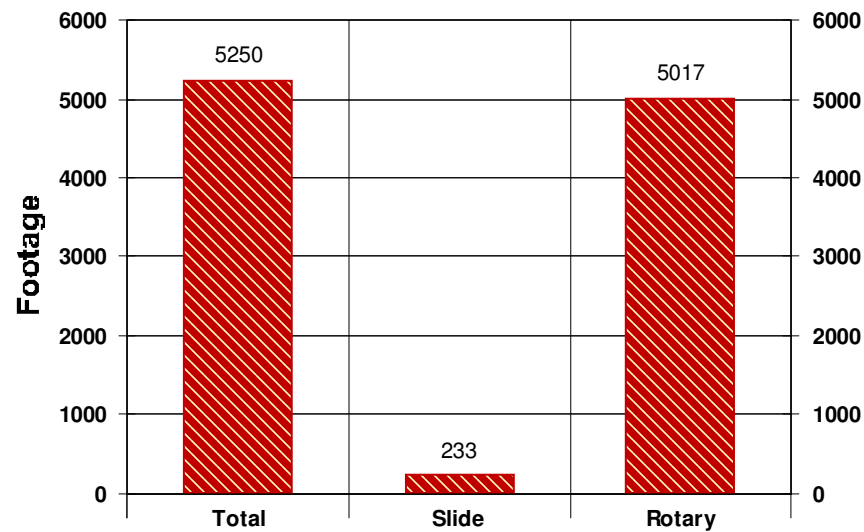


## Daily Footage

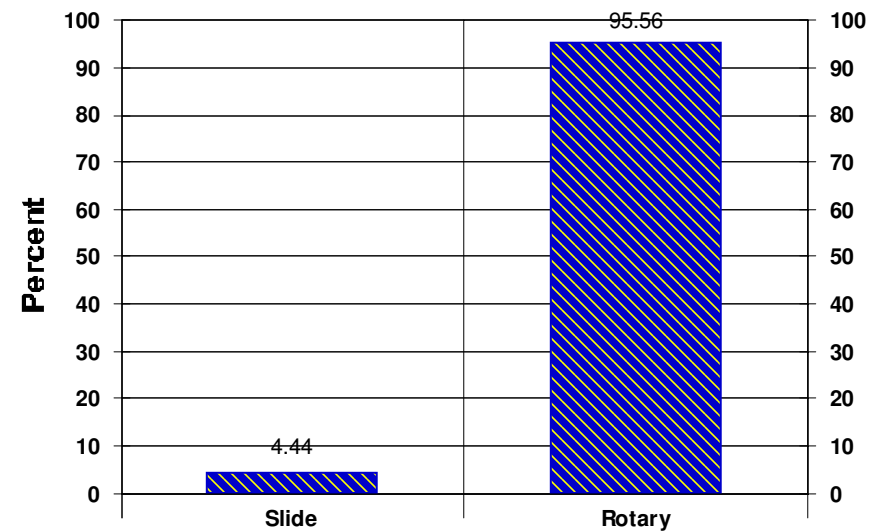


Rotary Drilling Sliding

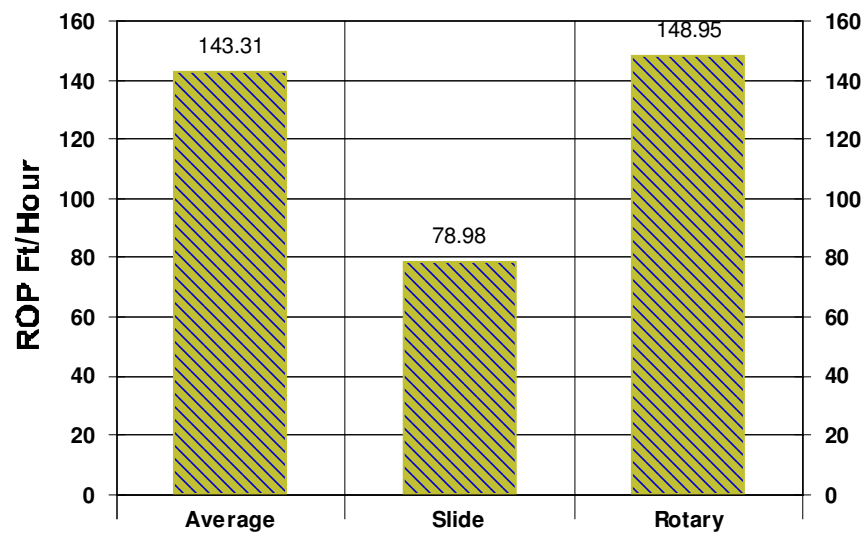
Footage Drilled Totals



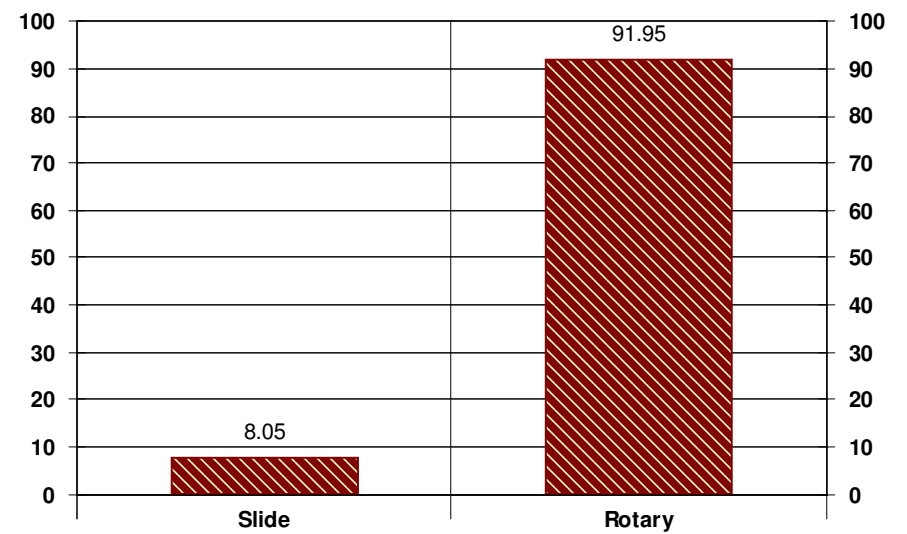
Footage Percent



Rate of Penetration Totals



Time Percent





## **Corporate Office**

*700 17th Street; Suite 900*

*Denver, CO 80202*

*303-876-6240*

## **Rocky Mountain Operations**

*2535 S. 2800 W, Bldg A*

*Roosevelt, UT 84066*

*435-856-3170*

## **Rockies/West Coast Operations Manager**

*Ben Fagnant*

*bfagnant@payzonedirectional.com*

*435-401-0656*

## **Well Planning**

*Derek Stephens*

*dstephens@payzonedirectional.com*

*713-842-0616*

## **West Coast Operations**

*4205 Atlas Court*

*Bakersfield, CA 93308*

## **Accounts Payable/Receivable**

*Jennifer Castille*

*jcastille@payzonedirectional.com*