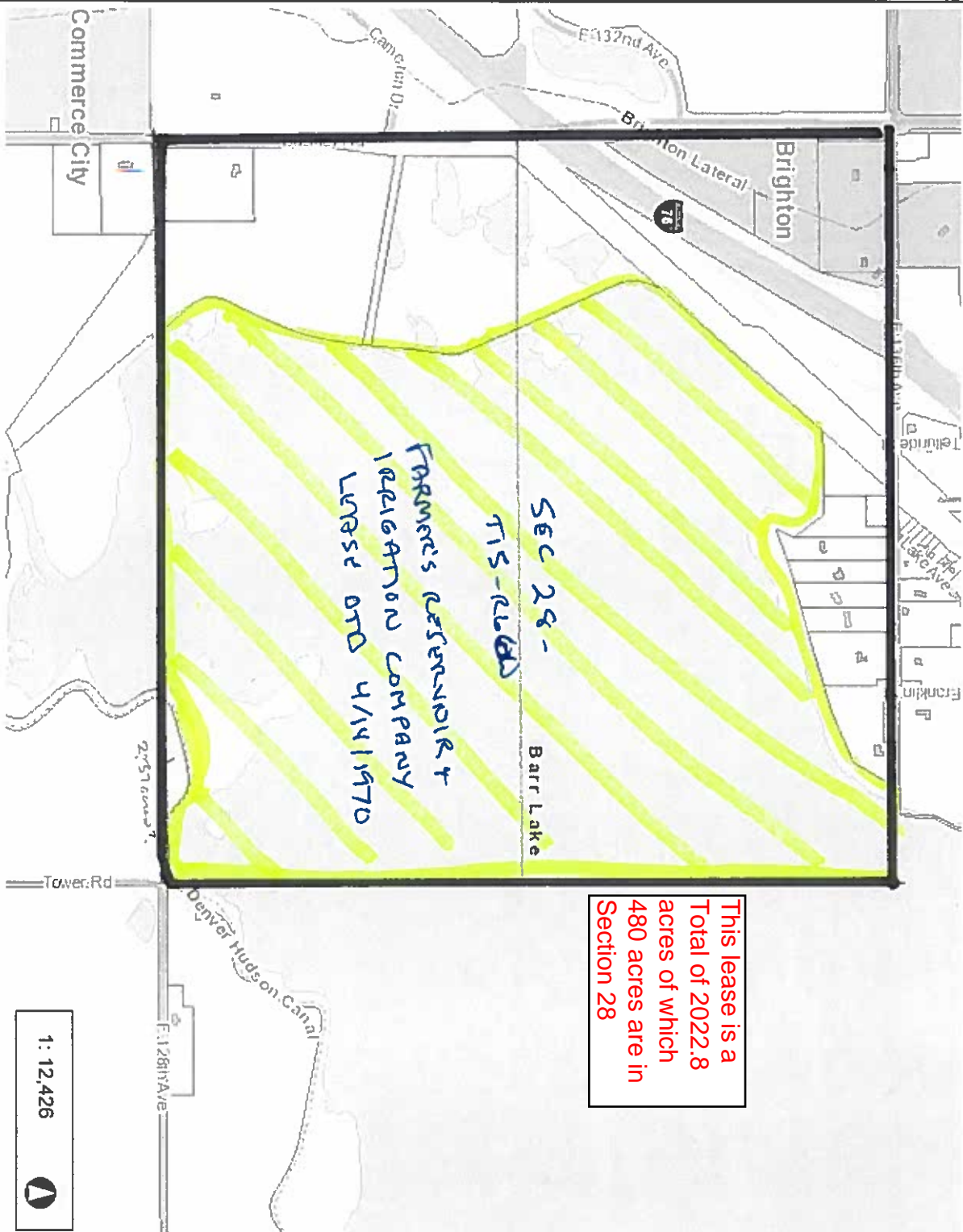


Adams County Map



This lease is a
Total of 2022.8
acres of which
480 acres are in
Section 28

1: 12,426



- Legend**
- Highways
 - Highways (10,000 - 20,000)
 - Interstate
 - Highway
 - Tolway
 - Streets
 - Streets (10,000 - 20,000)
 - Streets
 - Ramp
 - Building
 - County Parks and Open Space
 - Cities
 - Aurora
 - Aurora
 - Bennett
 - Brighton
 - Commerce City
 - Federal Heights
 - Lockbue
 - Northglenn
 - Thornton
 - Westminster
 - Small Lakes
 - Major Lakes
 - Rivers
 - Canal
 - Ditch
 - Primary Creek

Notes

Sec 28, T1S, R66W

0.4 0 0.20 0.4 Miles

NAD_1983_StatePlane_Colorado_Central_FIPS_0502_Feet

© Latitude Geographics Group Ltd.

This map is a user generated static output from an internet mapping site and is for reference only. Data layers that appear on this map may or may not be accurate, current, or otherwise reliable.

THIS MAP IS NOT TO BE USED FOR NAVIGATION