

HALLIBURTON

iCem[®] Service

GREAT WESTERN OIL & GAS LLC - eBUS

For: SHANNON DAVIS

Date: Saturday, September 06, 2014

SCHMUNK EF 31-369HN

SCHMUNK EF

Case 1

Sincerely,

AARON SMITH

The Road to Excellence Starts with Safety

Sold To #: 346459	Ship To #: 3353922	Quote #:	Sales Order #: 0901631087
Customer: GREAT WESTERN OIL & GAS LLC - eBUS		Customer Rep: SHANNON DAVIS	
Well Name: SCHMUNK -EF-	Well #: 31-369 HN	API/UWI #: 05-123-38934-00	
Field: WATTENBERG	City (SAP): EATON	County/Parish: WELD	State: COLORADO
Legal Description: NW NE-31-7N-65W-530FNL-2034FEL			
Contractor:		Rig/Platform Name/Num: Craig 7	
Job BOM: 7521			
Well Type: HORIZONTAL OIL			
Sales Person: HALAMERICA\H117930		Srv Supervisor: Aaron Smith	
Job			

Formation Name	
Formation Depth (MD)	Top Bottom
Form Type	BHST
Job depth MD	1055ft Job Depth TVD 1055
Water Depth	Wk Ht Above Floor 5
Perforation Depth (MD)	From To

Well Data

Description	New / Used	Size in	ID in	Weight lbm/ft	Thread	Grade	Top MD ft	Bottom MD ft	Top TVD ft	Bottom TVD ft
Casing	0	9.625	8.921	36	LTC	J-55	0	1055	0	1055
Open Hole Section			13.5				0	1070	0	1070

Tools and Accessories

Type	Size in	Qty	Make	Depth ft	Type	Size in	Qty	Make
Guide Shoe	9.625				Top Plug	9.625	1	HES
Float Shoe	9.625	1	SSII	1055	Bottom Plug	9.625		HES
Float Collar	9.625	1	SSII	1015	SSR plug set	9.625		HES
Insert Float	9.625				Plug Container	9.625	1	HES
Stage Tool	9.625				Centralizers	9.625		HES

Miscellaneous Materials

Gelling Agt	Conc	Surfactant	Conc	Acid Type	Qty	Conc
Treatment Fld	Conc	Inhibitor	Conc	Sand Type	Size	Qty

Fluid Data

Stage/Plug #: 1									
Fluid #	Stage Type	Fluid Name	Qty	Qty UoM	Mixing Density lbm/gal	Yield ft3/sack	Mix Fluid Gal	Rate bbl/min	Total Mix Fluid Gal
1	Fresh Water Spacer	Mud Flush III	10	bbl	8.4			6	

Fluid #	Stage Type	Fluid Name	Qty	Qty UoM	Mixing Density lbm/gal	Yield ft3/sack	Mix Fluid Gal	Rate bbl/min	Total Mix Fluid Gal
2	SwiftCem B2	SWIFTCEM (TM) SYSTEM	430	sack	14.2	1.54		6	7.64
7.64 Gal		FRESH WATER							
Fluid #	Stage Type	Fluid Name	Qty	Qty UoM	Mixing Density lbm/gal	Yield ft3/sack	Mix Fluid Gal	Rate bbl/min	Total Mix Fluid Gal
3	Displacement	Displacement	78.5	bbl	8.33			6	
Cement Left In Pipe		Amount	42 ft		Reason		Shoe Joint		
Comment									

HALLIBURTON

GREAT WESTERN OIL & GAS LLC - eBUS
GREAT WESTERN SCHMUNK EF 31-369HN SURFACE
Case 1

4.5 Job Event Log

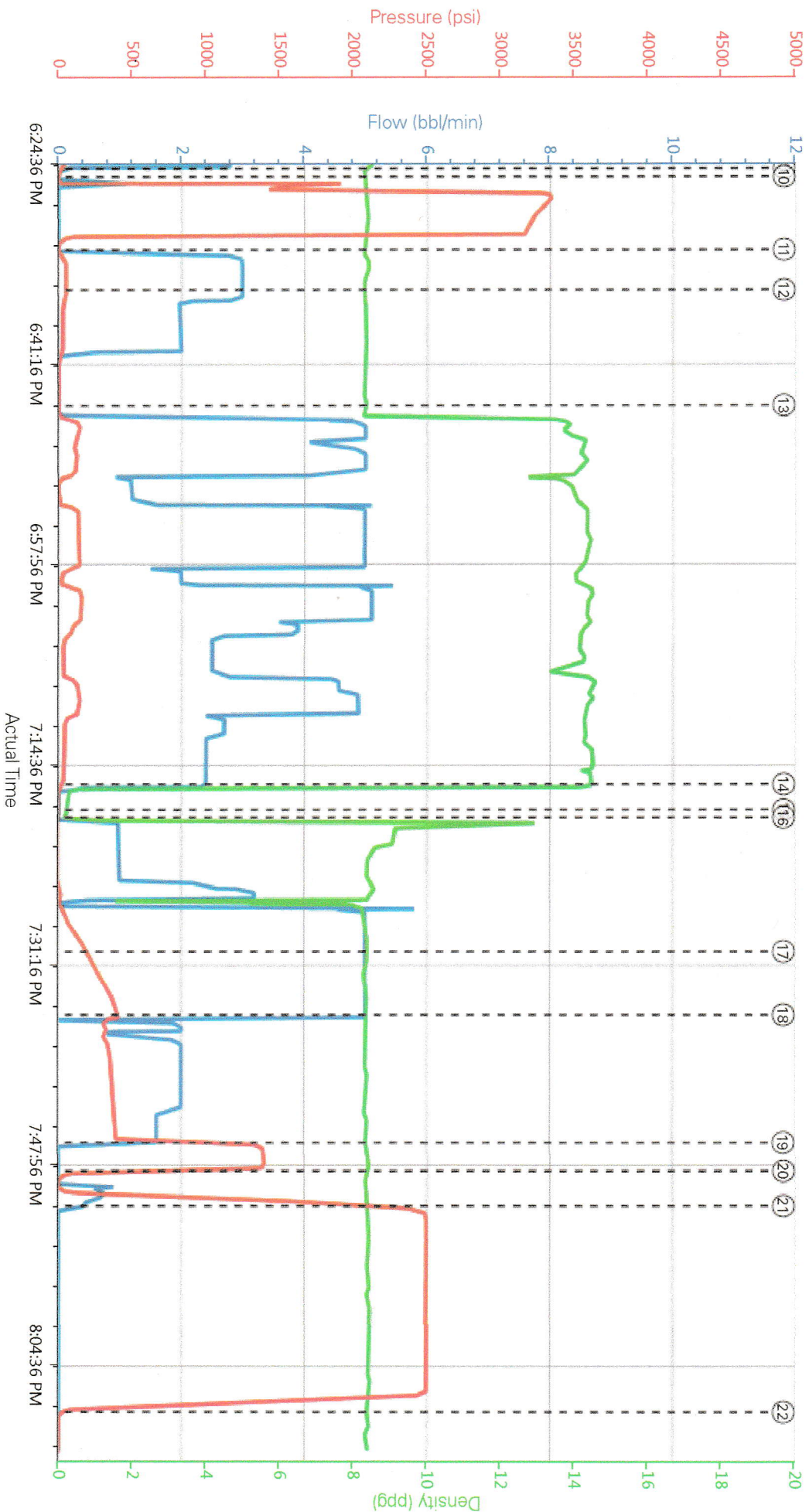
Type	Seq. No.	Activity	Graph Label	Date	Time	Source	Comb Pump Rate (bbl/min)	DH Density (ppg)	PS Pump Press (psi)	Comments
Event	1	Call Out	Call Out	9/6/2014	12:00:00	USER				CALLED OUT FOR ON LOCATION @ 1700
Event	2	Depart Yard Safety Meeting	Depart Yard Safety Meeting	9/6/2014	15:00:00	USER				JOURNEY MANAGEMENT MEETING PRIOR TO DEPARTURE
Event	3	Depart from Service Center or Other Site	Depart from Service Center or Other Site	9/6/2014	15:15:00	USER				
Event	4	Arrive at Location from Service Center	Arrive at Location from Service Center	9/6/2014	16:30:00	USER				WITH ALL EQUIPMENT AND MATERIALS, RIG STILL RUNNING CASING
Event	5	Pre-Rig Up Safety Meeting	Pre-Rig Up Safety Meeting	9/6/2014	16:35:00	USER				RIG-UP JSA WITH HES CREW
Event	6	Rig-Up Equipment	Rig-Up Equipment	9/6/2014	16:40:00	USER				
Event	7	Rig-Up Completed	Rig-Up Completed	9/6/2014	17:00:00	USER				
Event	8	Pre-Job Safety Meeting	Pre-Job Safety Meeting	9/6/2014	18:00:00	USER	0.00	8.40	-4.00	WITH CUSTOMER REP AND RIG CREW
Event	9	Start Job	Start Job	9/6/2014	18:25:18	COM4	0.00	8.34	6.00	
Event	10	Test Lines	Test Lines	9/6/2014	18:26:00	COM4	0.00	8.34	3.00	@3500
Event	11	Pump Spacer 1	Pump Spacer 1	9/6/2014	18:32:04	USER	1.40	8.26	6.00	10 BBLS MUD FLUSH
Event	12	Pump Spacer 2	Pump Spacer 2	9/6/2014	18:35:24	COM4	3.00	8.32	51.00	10BBLS FRESH WATER WITH RED DYE
Event	13	Pump Cement	Pump Cement	9/6/2014	18:45:00	COM4	0.00	8.37	0.00	118 BBLS/430 SKS @ 14.2 PPG, 1.54 YIELD, 7.56 GAL/SK
Event	14	Shutdown	Shutdown	9/6/2014	19:16:31	COM4	0.00	1.13	16.00	
Event	15	Drop Top Plug	Drop Top Plug	9/6/2014	19:18:39	COM4	0.00	0.25	-4.00	PRE-LOADED HWE TOP PLUG IN PLUG CONTAINER, VERIFIED BY CUSTOMER REP
Event	16	Pump Displacement	Pump Displacement	9/6/2014	19:19:17	COM4	0.90	3.29	1.00	78.5 BBLS FRESH WATER

HALLIBURTON

GREAT WESTERN OIL & GAS LLC - eBUS
GREAT WESTERN SCHMUNK EF 31-369HN SURFACE
Case 1

Type	Seq. No.	Activity	Graph Label	Date	Time	Source	Comb Pump Rate (bbl/min)	DH Density (ppg)	PS Pump Press (psi)	Comments
Event	17	Other	Spacer Returns to Surface	9/6/2014	19:30:26	COM4	5.00	8.36	207.00	@ 38 BBLS DISPLACEMENT 20 BBLS TO SURFACE
Event	18	Other	Cement Returns to Surface	9/6/2014	19:35:42	COM4	0.50	8.37	395.00	@ 58 BBLS DISPLACEMENT, 20.5 BBLS TO SURFACE
Event	19	Bump Plug	Bump Plug	9/6/2014	<u>19:46:20</u>	COM4	0.00	8.39	1378.00	@ 1000 OVER, FINAL CIRCULATING PRESSURE 384 PSI, FINAL BUMP 1394
Event	20	Check Floats	Check Floats	9/6/2014	19:48:42	USER	0.00	8.41	48.00	FLOATS GOOD, 1 BBL BACK CASING TEST 2400 PSI FOR 15 MIN
Event	21	Other	Other	9/6/2014	19:51:37	COM4	0.00	8.41	2447.00	THANKS AARON SMITH AND CREW
Event	22	End Job	End Job	9/6/2014	20:08:45	COM4	0.00	8.35	1.00	RIG-DOWN JSA WITH HES CREW
Event	23	Pre-Rig Down Safety Meeting	Pre-Rig Down Safety Meeting	9/6/2014	20:30:00	USER				
Event	24	Rig-Down Equipment	Rig-Down Equipment	9/6/2014	20:35:00	USER				
Event	25	Rig-Down Completed	Rig-Down Completed	9/6/2014	20:45:00	USER				
Event	26	Depart Location for Service Center or Other Site	Depart Location for Service Center or Other Site	9/6/2014	20:45:01	USER				JOURNEY MANAGEMENT MEETING HELD PRIOR TO DEPARTURE

GREAT WESTERN SCHMUNK EF31-369HN SURFACE



Comb Pump Rate (bbl/min) 0 DH Density (ppg) 8.4 PS Pump Press (psi) -2

- ① Call Out [n/a;n/a;n/a](#)
 - ② Depart Yard Safety Meeting [n/a;n/a;n/a](#)
 - ③ Depart from Service Center or Other Site [n/a;n/a;n/a](#)
 - ④ Arrive at Location from Service Center [n/a;n/a;n/a](#)
 - ⑤ Pre-Rig Up Safety Meeting [n/a;n/a;n/a](#)
 - ⑥ Rig-Up Equipment [n/a;n/a;n/a](#)
 - ⑦ Rig-Up Completed [n/a;n/a;n/a](#)
 - ⑧ Pre-Job Safety Meeting [0:8:4;-4](#)
 - ⑨ Start Job [0:8:34;6](#)
 - ⑩ Test Lines [0:8:34;3](#)
- Created: 2014-09-06 16:39:52, Version: 4.0.248

HALLIBURTON | iCem® Service

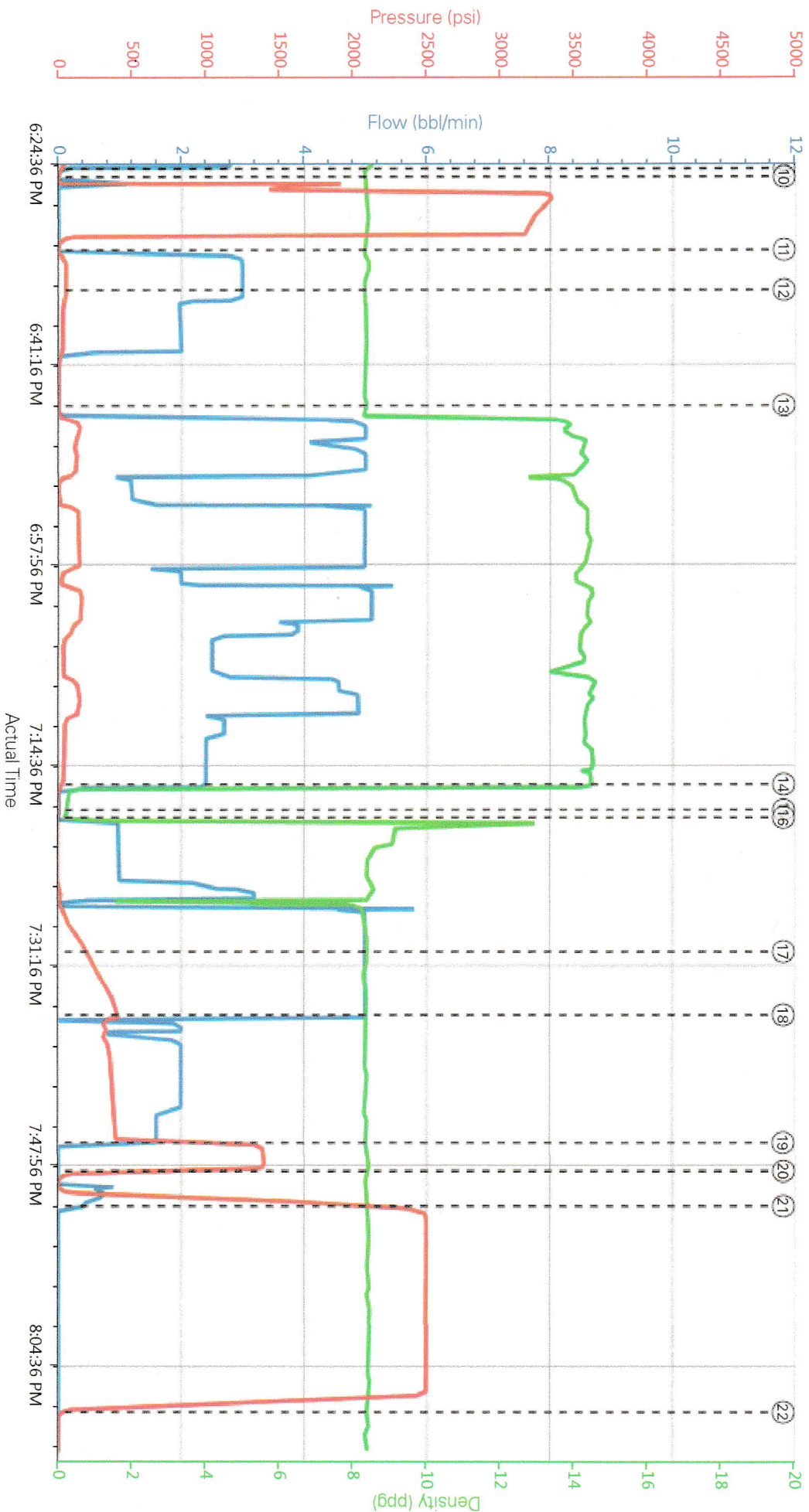
Customer : GREAT WESTERN OIL & GAS LLC - eBUS
Representative : AARON SMITH

Job Date : 9/6/2014 5:44:55 PM
Sales Order # : 901631087

Well : SCHMUNK EF 31-369HN

Edit

GREAT WESTERN SCHMUNK EF31-369HN SURFACE



- ① Call Out [n/a;n/a;n/a](#)
 - ② Depart Yard Safety Meeting [n/a;n/a;n/a](#)
 - ③ Depart from Service Center or Other Site [n/a;n/a;n/a](#)
 - ④ Arrive at Location from Service Center [n/a;n/a;n/a](#)
 - ⑤ Pre-Rig Up Safety Meeting [n/a;n/a;n/a](#)
 - ⑥ Rig-Up Equipment [n/a;n/a;n/a](#)
 - ⑦ Rig-Up Completed [n/a;n/a;n/a](#)
 - ⑧ Pre-Job Safety Meeting [0;8;4;-4](#)
 - ⑨ Start Job [0;8;34;6](#)
 - ⑩ Test Lines [0;8;34;3](#)
- ▼ **HALLIBURTON** | iCem® Service
- Created: 2014-09-06 16:39:52, Version: 4.0.248 Edit

Customer : GREAT WESTERN OIL & GAS LLC - eBUS

Job Date : 9/6/2014 5:44:55 PM

Representative : AARON SMITH

Sales Order # : 901631087

Well : SCHMUNK EF 31-369HN