

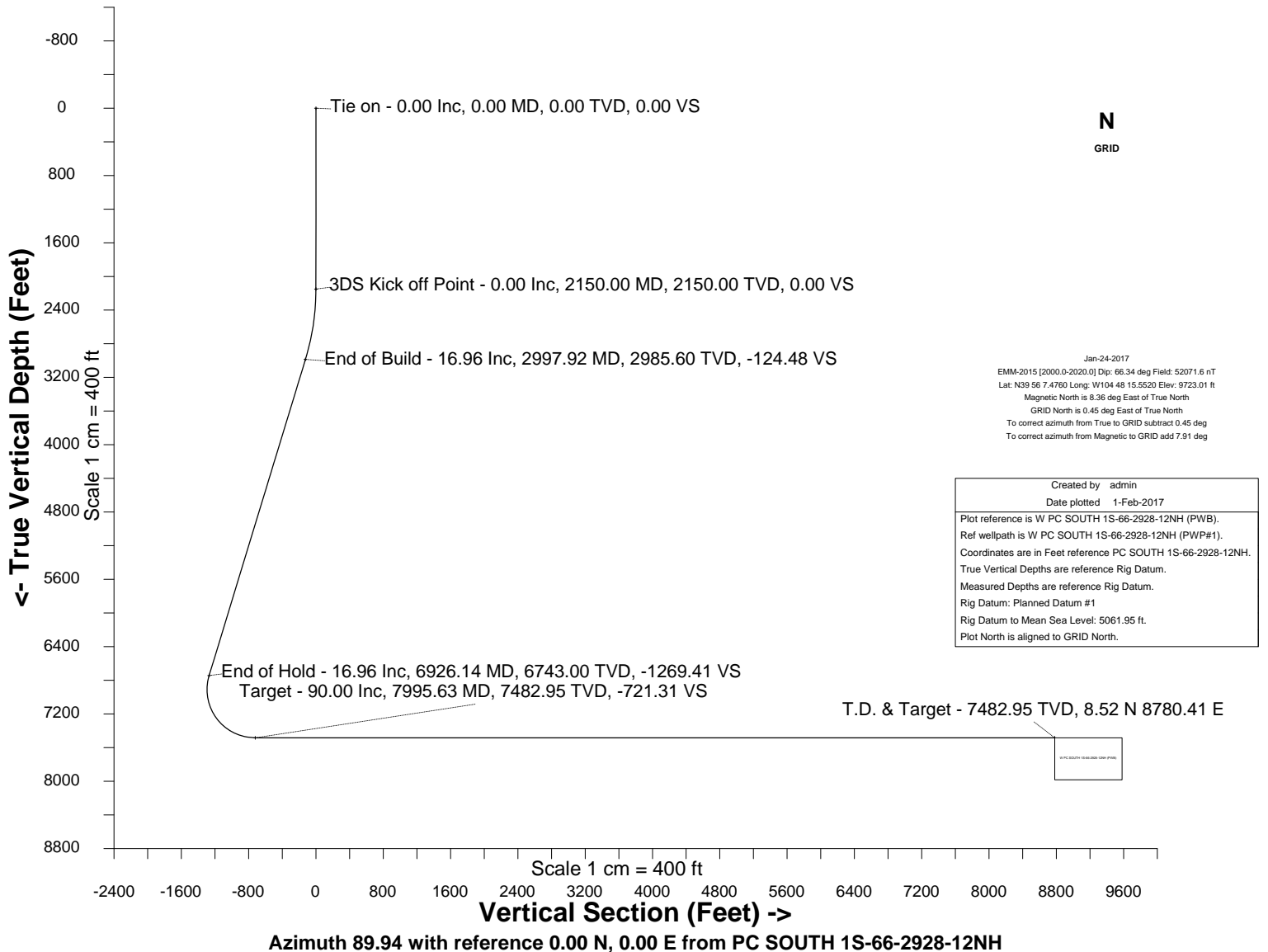
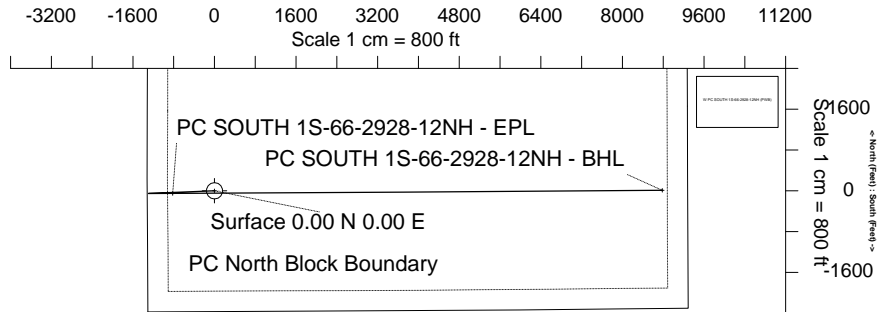
HRM Resources

Location	DJ Basin	Slot	PC SOUTH 1S-66-2928-12NH
Field	WATTENBERG	Well	W PC SOUTH 1S-66-2928-12NH
Installation	PC 1S-66-2928 PAD	Wellbore	W PC SOUTH 1S-66-2928-12NH (PWB)

WELL PROFILE DATA

Point	MD	Inc	Azi	TVD	North	East	deg/100ft	V. Sect
Tie on	0.00	0.00	0.00	0.00	S 0.00	W 0.00		0.00
KOP	2150.00	0.00	267.75	2150.00	S 0.00	W 0.00	0.00	0.00
End of Build	2997.92	16.96	267.75	2985.60	S 4.90	W 124.48	2.00	-124.48
End of Hold	6926.14	16.96	267.75	6743.00	S 49.98	W 1269.37	0.00	-1269.41
Target PC SOU... - EPL	7995.63	90.00	89.62	7482.95	S 53.79	W 721.26	10.00	-721.31
T.D. & Target PC ...BHL	17497.51	90.00	89.62	7482.95	N 8.52	E 8780.41	0.00	8780.42

East (Feet) ->





SYSDRILL
Well Design Combined Report
Wellbore: W PC SOUTH 1S-66-2928-12NH (PWB)



Wellhead Details							
Name	Latitude	Longitude	Northing	Easting	North	East	Slot Elevation Above Ground
PC SOUTH 1S-66-2928-12NH	N39 56 7.3320	W104 48 15.1560	1220069.3537	3195110.7954	14.33S	30.96E	0.00

Declination		
Date	Source	Time
Jan-24-2017	EMM-2015 [2000.0-2020.0]	09:32

Installation Details						
Name	Installation Position (Latitude)	.00 89.620 7482.95 21.63S	Northing	Easting	Coord System Name	North Alignment
PC 1S-66-2928 PAD	N39 56 7.4760	W104 48 15.5520	1220083.6821	3195079.8360	CO83-NF on NORTH AMERICAN DATUM 1983 datum	Grid

Summary Wellpath									
MD[ft]	Inc[deg]	Azi[deg]	TVD[ft]	North[ft]	East[ft]	Dogleg [deg/100ft]	Vertical Section[ft]	Northing	Easting
0.00	0.00	0.000	0.00	0.00N	0.00E		0.00	1220069.35	3195110.80
2150.00	0.00	267.750	2150.00	0.00N	0.00E	==>	0.00	1220069.35	3195110.80
2997.92	16.96	267.750	2985.60	4.90S	124.48W	2.00	-124.48	1220064.45	3194986.32
6926.14	16.96	267.750	6743.00	49.98S	1269.37W	==>	-1269.41	1220019.37	3193841.47
7995.63	90.00	89.620	7482.95	53.79S	721.26W	10.00	-721.31	1220015.57	3194389.56
17497.51	90.00	89.620	7482.95	8.52N	8780.41E	==>	8780.42	1220077.87	3203890.94

Interpolated Wellpath								
MD[ft]	Inc[deg]	Azi[deg]	TVD[ft]	North[ft]	East[ft]	Dogleg [deg/100ft]	Vertical Section[ft]	All Station Comments
0.00	0.00	0.000	0.00	0.00N	0.00E		0.00	Slot Datum
100.00	0.00	0.000	100.00	0.00N	0.00E	==>	0.00	
200.00	0.00	0.000	200.00	0.00N	0.00E	==>	0.00	
300.00	0.00	0.000	300.00	0.00N	0.00E	==>	0.00	
400.00	0.00	0.000	400.00	0.00N	0.00E	==>	0.00	
500.00	0.00	0.000	500.00	0.00N	0.00E	==>	0.00	
600.00	0.00	0.000	600.00	0.00N	0.00E	==>	0.00	
700.00	0.00	0.000	700.00	0.00N	0.00E	==>	0.00	
800.00	0.00	0.000	800.00	0.00N	0.00E	==>	0.00	
900.00	0.00	0.000	900.00	0.00N	0.00E	==>	0.00	
1000.00	0.00	0.000	1000.00	0.00N	0.00E	==>	0.00	
1100.00	0.00	0.000	1100.00	0.00N	0.00E	==>	0.00	
1200.00	0.00	0.000	1200.00	0.00N	0.00E	==>	0.00	
1300.00	0.00	0.000	1300.00	0.00N	0.00E	==>	0.00	
1400.00	0.00	0.000	1400.00	0.00N	0.00E	==>	0.00	
1500.00	0.00	0.000	1500.00	0.00N	0.00E	==>	0.00	
1600.00	0.00	0.000	1600.00	0.00N	0.00E	==>	0.00	
1700.00	0.00	0.000	1700.00	0.00N	0.00E	==>	0.00	
1800.00	0.00	0.000	1800.00	0.00N	0.00E	==>	0.00	
1900.00	0.00	0.000	1900.00	0.00N	0.00E	==>	0.00	
2000.00	0.00	0.000	2000.00	0.00N	0.00E	==>	0.00	
2100.00	0.00	0.000	2100.00	0.00N	0.00E	==>	0.00	
2200.00	1.00	267.750	2200.00	0.02S	0.44W	2.00	-0.44	
2300.00	3.00	267.750	2299.93	0.15S	3.92W	2.00	-3.92	
2400.00	5.00	267.750	2399.68	0.43S	10.89W	2.00	-10.89	
2500.00	7.00	267.750	2499.13	0.84S	21.34W	2.00	-21.34	
2600.00	9.00	267.750	2598.15	1.39S	35.24W	2.00	-35.24	
2700.00	11.00	267.750	2696.63	2.07S	52.59W	2.00	-52.60	
2800.00	13.00	267.750	2794.44	2.89S	73.37W	2.00	-73.37	
2900.00	15.00	267.750	2891.46	3.84S	97.54W	2.00	-97.54	
3000.00	16.96	267.750	2987.58	4.93S	125.08W	==>	-125.08	
3100.00	16.96	267.750	3083.24	6.07S	154.23W	==>	-154.23	

All data is in Feet unless otherwise stated
Coordinates are from Slot MD's are from Rig and TVD's are from Rig (Planned Datum #1 5062.0ft above Mean Sea Level)
Vertical Section is from 0.00N 0.00E on azimuth 89.940 degrees
Bottom hole distance is 8780.42 Feet on azimuth 89.94 degrees from Wellhead
Calculation method uses Minimum Curvature method
Prepared by IPT
Date Printed: 1-Feb-2017



SYSDRILL
Well Design Combined Report
Wellbore: W PC SOUTH 1S-66-2928-12NH (PWB)



Interpolated Wellpath								
MD[ft]	Inc[deg]	Azi[deg]	TVD[ft]	North[ft]	East[ft]	Dogleg [deg/100ft]	Vertical Section[ft]	All Station Comments
3200.00	16.96	267.750	3178.89	7.22S	183.37W	==>	-183.38	
3300.00	16.96	267.750	3274.54	8.37S	212.52W	==>	-212.52	
3400.00	16.96	267.750	3370.19	9.52S	241.66W	==>	-241.67	
3500.00	16.96	267.750	3465.84	10.66S	270.81W	==>	-270.82	
3600.00	16.96	267.750	3561.49	11.81S	299.95W	==>	-299.96	
3700.00	16.96	267.750	3657.14	12.96S	329.10W	==>	-329.11	
3800.00	16.96	267.750	3752.80	14.11S	358.24W	==>	-358.26	
3900.00	16.96	267.750	3848.45	15.25S	387.39W	==>	-387.40	
4000.00	16.96	267.750	3944.10	16.40S	416.53W	==>	-416.55	
4100.00	16.96	267.750	4039.75	17.55S	445.68W	==>	-445.70	
4200.00	16.96	267.750	4135.40	18.70S	474.82W	==>	-474.84	
4300.00	16.96	267.750	4231.05	19.84S	503.97W	==>	-503.99	
4400.00	16.96	267.750	4326.71	20.99S	533.11W	==>	-533.13	
4500.00	16.96	267.750	4422.36	22.14S	562.26W	==>	-562.28	
4600.00	16.96	267.750	4518.01	23.29S	591.40W	==>	-591.43	
4700.00	16.96	267.750	4613.66	24.44S	620.55W	==>	-620.57	
4800.00	16.96	267.750	4709.31	25.58S	649.70W	==>	-649.72	
4900.00	16.96	267.750	4804.96	26.73S	678.84W	==>	-678.87	
5000.00	16.96	267.750	4900.62	27.88S	707.99W	==>	-708.01	
5100.00	16.96	267.750	4996.27	29.03S	737.13W	==>	-737.16	
5200.00	16.96	267.750	5091.92	30.17S	766.28W	==>	-766.31	
5300.00	16.96	267.750	5187.57	31.32S	795.42W	==>	-795.45	
5400.00	16.96	267.750	5283.22	32.47S	824.57W	==>	-824.60	
5500.00	16.96	267.750	5378.87	33.62S	853.71W	==>	-853.74	
5600.00	16.96	267.750	5474.53	34.76S	882.86W	==>	-882.89	
5700.00	16.96	267.750	5570.18	35.91S	912.00W	==>	-912.04	
5800.00	16.96	267.750	5665.83	37.06S	941.15W	==>	-941.18	
5900.00	16.96	267.750	5761.48	38.21S	970.29W	==>	-970.33	
6000.00	16.96	267.750	5857.13	39.35S	999.44W	==>	-999.48	
6100.00	16.96	267.750	5952.78	40.50S	1028.58W	==>	-1028.62	
6200.00	16.96	267.750	6048.44	41.65S	1057.73W	==>	-1057.77	
6300.00	16.96	267.750	6144.09	42.80S	1086.88W	==>	-1086.92	
6400.00	16.96	267.750	6239.74	43.95S	1116.02W	==>	-1116.06	
6500.00	16.96	267.750	6335.39	45.09S	1145.17W	==>	-1145.21	
6600.00	16.96	267.750	6431.04	46.24S	1174.31W	==>	-1174.36	
6700.00	16.96	267.750	6526.69	47.39S	1203.46W	==>	-1203.50	
6800.00	16.96	267.750	6622.35	48.54S	1232.60W	==>	-1232.65	
6900.00	16.96	267.750	6718.00	49.68S	1261.75W	==>	-1261.79	
7000.00	9.58	266.230	6814.84	50.81S	1286.29W	10.00	-1286.33	
7100.00	0.72	142.300	6914.39	51.86S	1294.22W	10.00	-1294.27	
7200.00	10.45	92.730	7013.81	52.79S	1284.76W	10.00	-1284.81	
7300.00	20.44	91.160	7110.07	53.58S	1258.17W	10.00	-1258.22	
7400.00	30.44	90.600	7200.26	54.20S	1215.26W	10.00	-1215.32	
7500.00	40.44	90.300	7281.63	54.64S	1157.35W	10.00	-1157.41	
7600.00	50.44	90.100	7351.71	54.87S	1086.19W	10.00	-1086.25	
7700.00	60.44	89.950	7408.36	54.90S	1003.95W	10.00	-1004.00	
7800.00	70.44	89.830	7449.88	54.72S	913.11W	10.00	-913.16	
7900.00	80.44	89.720	7474.99	54.33S	816.45W	10.00	-816.50	
8000.00	90.00	89.620	7482.95	53.76S	716.89W	==>	-716.94	
8100.00	90.00	89.620	7482.95	53.10S	616.89W	==>	-616.94	
8200.00	90.00	89.620	7482.95	52.45S	516.89W	==>	-516.95	
8300.00	90.00	89.620	7482.95	51.79S	416.90W	==>	-416.95	
8400.00	90.00	89.620	7482.95	51.14S	316.90W	==>	-316.95	
8500.00	90.00	89.620	7482.95	50.48S	216.90W	==>	-216.95	
8600.00	90.00	89.620	7482.95	49.83S	116.90W	==>	-116.95	
8700.00	90.00	89.620	7482.95	49.17S	16.91W	==>	-16.95	
8800.00	90.00	89.620	7482.95	48.51S	83.09E	==>	83.05	
8900.00	90.00	89.620	7482.95	47.86S	183.09E	==>	183.04	
9000.00	90.00	89.620	7482.95	47.20S	283.09E	==>	283.04	

All data is in Feet unless otherwise stated
Coordinates are from Slot MD's are from Rig and TVD's are from Rig (Planned Datum #1 5062.0ft above Mean Sea Level)
Vertical Section is from 0.00N 0.00E on azimuth 89.940 degrees
Bottom hole distance is 8780.42 Feet on azimuth 89.94 degrees from Wellhead
Calculation method uses Minimum Curvature method
Prepared by IPT
Date Printed: 1-Feb-2017



SYSDRILL
Well Design Combined Report
Wellbore: W PC SOUTH 1S-66-2928-12NH (PWB)



Interpolated Wellpath								
MD[ft]	Inc[deg]	Azi[deg]	TVD[ft]	North[ft]	East[ft]	Dogleg [deg/100ft]	Vertical Section[ft]	All Station Comments
9100.00	90.00	89.620	7482.95	46.55S	383.09E	==>	383.04	
9200.00	90.00	89.620	7482.95	45.89S	483.08E	==>	483.04	
9300.00	90.00	89.620	7482.95	45.24S	583.08E	==>	583.04	
9400.00	90.00	89.620	7482.95	44.58S	683.08E	==>	683.04	
9500.00	90.00	89.620	7482.95	43.92S	783.08E	==>	783.03	
9600.00	90.00	89.620	7482.95	43.27S	883.08E	==>	883.03	
9700.00	90.00	89.620	7482.95	42.61S	983.07E	==>	983.03	
9800.00	90.00	89.620	7482.95	41.96S	1083.07E	==>	1083.03	
9900.00	90.00	89.620	7482.95	41.30S	1183.07E	==>	1183.03	
10000.00	90.00	89.620	7482.95	40.65S	1283.07E	==>	1283.03	
10100.00	90.00	89.620	7482.95	39.99S	1383.06E	==>	1383.02	
10200.00	90.00	89.620	7482.95	39.33S	1483.06E	==>	1483.02	
10300.00	90.00	89.620	7482.95	38.68S	1583.06E	==>	1583.02	
10400.00	90.00	89.620	7482.95	38.02S	1683.06E	==>	1683.02	
10500.00	90.00	89.620	7482.95	37.37S	1783.06E	==>	1783.02	
10600.00	90.00	89.620	7482.95	36.71S	1883.05E	==>	1883.02	
10700.00	90.00	89.620	7482.95	36.06S	1983.05E	==>	1983.02	
10800.00	90.00	89.620	7482.95	35.40S	2083.05E	==>	2083.01	
10900.00	90.00	89.620	7482.95	34.74S	2183.05E	==>	2183.01	
11000.00	90.00	89.620	7482.95	34.09S	2283.04E	==>	2283.01	
11100.00	90.00	89.620	7482.95	33.43S	2383.04E	==>	2383.01	
11200.00	90.00	89.620	7482.95	32.78S	2483.04E	==>	2483.01	
11300.00	90.00	89.620	7482.95	32.12S	2583.04E	==>	2583.01	
11400.00	90.00	89.620	7482.95	31.47S	2683.04E	==>	2683.00	
11500.00	90.00	89.620	7482.95	30.81S	2783.03E	==>	2783.00	
11600.00	90.00	89.620	7482.95	30.15S	2883.03E	==>	2883.00	
11700.00	90.00	89.620	7482.95	29.50S	2983.03E	==>	2983.00	
11800.00	90.00	89.620	7482.95	28.84S	3083.03E	==>	3083.00	
11900.00	90.00	89.620	7482.95	28.19S	3183.03E	==>	3183.00	
12000.00	90.00	89.620	7482.95	27.53S	3283.02E	==>	3283.00	
12100.00	90.00	89.620	7482.95	26.88S	3383.02E	==>	3382.99	
12200.00	90.00	89.620	7482.95	26.22S	3483.02E	==>	3482.99	
12300.00	90.00	89.620	7482.95	25.56S	3583.02E	==>	3582.99	
12400.00	90.00	89.620	7482.95	24.91S	3683.01E	==>	3682.99	
12500.00	90.00	89.620	7482.95	24.25S	3783.01E	==>	3782.99	
12600.00	90.00	89.620	7482.95	23.60S	3883.01E	==>	3882.99	
12700.00	90.00	89.620	7482.95	22.94S	3983.01E	==>	3982.98	
12800.00	90.00	89.620	7482.95	22.29S	4083.01E	==>	4082.98	
12900.00	90.00	89.620	7482.95	21.63S	4183.00E	==>	4182.98	
13000.00	90.00	89.620	7482.95	20.97S	4283.00E	==>	4282.98	
13100.00	90.00	89.620	7482.95	20.32S	4383.00E	==>	4382.98	
13200.00	90.00	89.620	7482.95	19.66S	4483.00E	==>	4482.98	
13300.00	90.00	89.620	7482.95	19.01S	4583.00E	==>	4582.97	
13400.00	90.00	89.620	7482.95	18.35S	4682.99E	==>	4682.97	
13500.00	90.00	89.620	7482.95	17.70S	4782.99E	==>	4782.97	
13600.00	90.00	89.620	7482.95	17.04S	4882.99E	==>	4882.97	
13700.00	90.00	89.620	7482.95	16.38S	4982.99E	==>	4982.97	
13800.00	90.00	89.620	7482.95	15.73S	5082.98E	==>	5082.97	
13900.00	90.00	89.620	7482.95	15.07S	5182.98E	==>	5182.97	
14000.00	90.00	89.620	7482.95	14.42S	5282.98E	==>	5282.96	
14100.00	90.00	89.620	7482.95	13.76S	5382.98E	==>	5382.96	
14200.00	90.00	89.620	7482.95	13.11S	5482.98E	==>	5482.96	
14300.00	90.00	89.620	7482.95	12.45S	5582.97E	==>	5582.96	
14400.00	90.00	89.620	7482.95	11.79S	5682.97E	==>	5682.96	
14500.00	90.00	89.620	7482.95	11.14S	5782.97E	==>	5782.96	
14600.00	90.00	89.620	7482.95	10.48S	5882.97E	==>	5882.95	
14700.00	90.00	89.620	7482.95	9.83S	5982.97E	==>	5982.95	
14800.00	90.00	89.620	7482.95	9.17S	6082.96E	==>	6082.95	
14900.00	90.00	89.620	7482.95	8.52S	6182.96E	==>	6182.95	

All data is in Feet unless otherwise stated
Coordinates are from Slot MD's are from Rig and TVD's are from Rig (Planned Datum #1 5062.0ft above Mean Sea Level)
Vertical Section is from 0.00N 0.00E on azimuth 89.940 degrees
Bottom hole distance is 8780.42 Feet on azimuth 89.94 degrees from Wellhead
Calculation method uses Minimum Curvature method
Prepared by IPT
Date Printed: 1-Feb-2017



SYSDRILL
Well Design Combined Report
Wellbore: W PC SOUTH 1S-66-2928-12NH (PWB)



Interpolated Wellpath								
MD[ft]	Inc[deg]	Azi[deg]	TVD[ft]	North[ft]	East[ft]	Dogleg [deg/100ft]	Vertical Section[ft]	All Station Comments
15000.00	90.00	89.620	7482.95	7.86S	6282.96E	==>	6282.95	
15100.00	90.00	89.620	7482.95	7.20S	6382.96E	==>	6382.95	
15200.00	90.00	89.620	7482.95	6.55S	6482.95E	==>	6482.95	
15300.00	90.00	89.620	7482.95	5.89S	6582.95E	==>	6582.94	
15400.00	90.00	89.620	7482.95	5.24S	6682.95E	==>	6682.94	
15500.00	90.00	89.620	7482.95	4.58S	6782.95E	==>	6782.94	
15600.00	90.00	89.620	7482.95	3.93S	6882.95E	==>	6882.94	
15700.00	90.00	89.620	7482.95	3.27S	6982.94E	==>	6982.94	
15800.00	90.00	89.620	7482.95	2.61S	7082.94E	==>	7082.94	
15900.00	90.00	89.620	7482.95	1.96S	7182.94E	==>	7182.93	
16000.00	90.00	89.620	7482.95	1.30S	7282.94E	==>	7282.93	
16100.00	90.00	89.620	7482.95	0.65S	7382.94E	==>	7382.93	
16200.00	90.00	89.620	7482.95	0.01N	7482.93E	==>	7482.93	
16300.00	90.00	89.620	7482.95	0.67N	7582.93E	==>	7582.93	
16400.00	90.00	89.620	7482.95	1.32N	7682.93E	==>	7682.93	
16500.00	90.00	89.620	7482.95	1.98N	7782.93E	==>	7782.92	
16600.00	90.00	89.620	7482.95	2.63N	7882.92E	==>	7882.92	
16700.00	90.00	89.620	7482.95	3.29N	7982.92E	==>	7982.92	
16800.00	90.00	89.620	7482.95	3.94N	8082.92E	==>	8082.92	
16900.00	90.00	89.620	7482.95	4.60N	8182.92E	==>	8182.92	
17000.00	90.00	89.620	7482.95	5.26N	8282.92E	==>	8282.92	
17100.00	90.00	89.620	7482.95	5.91N	8382.91E	==>	8382.92	
17200.00	90.00	89.620	7482.95	6.57N	8482.91E	==>	8482.91	
17300.00	90.00	89.620	7482.95	7.22N	8582.91E	==>	8582.91	
17400.00	90.00	89.620	7482.95	7.88N	8682.91E	==>	8682.91	
17497.51	90.00	89.620	7482.95	8.52N	8780.41E	==>	8780.42	

All data is in Feet unless otherwise stated
Coordinates are from Slot MD's are from Rig and TVD's are from Rig (Planned Datum #1 5062.0ft above Mean Sea Level)
Vertical Section is from 0.00N 0.00E on azimuth 89.940 degrees
Bottom hole distance is 8780.42 Feet on azimuth 89.94 degrees from Wellhead
Calculation method uses Minimum Curvature method
Prepared by IPT
Date Printed: 1-Feb-2017



All data is in Feet unless otherwise stated
 Coordinates are from Slot MD's are from Rig and TVD's are from Rig (Planned Datum #1 5062.0ft above Mean Sea Level)
 Vertical Section is from 0.00N 0.00E on azimuth 89.940 degrees
 Bottom hole distance is 8780.42 Feet on azimuth 89.94 degrees from Wellhead
 Calculation method uses Minimum Curvature method
 Prepared by IPT
 Date Printed: 1-Feb-2017



SYSDRILL
Closest Approach + Clearance Factor Summary Report
Wellbore: W PC SOUTH 1S-66-2928-12NH (PWB)



Ellipse separations are reported ONLY if BOTH wells have uncertainty data
Only Depth and Magnetic Reference Field error terms are correlated across tie points
Scan limit is calculated on CENTRE to CENTRE distance
Summary data uses Closest Approach clearance calculation for all minima
Hole size/Casings ARE included
Hole size/Casings are NOT subtracted from Centre-Centre distance
Confidence limit of 95.00% / 2.80 SD.

Wellbore		
Name	Created	Last Revised
W PC SOUTH 1S-66-2928-12NH (PWB)	Jan-24-2017	Jan-24-2017

Well		
Name	Government ID	Last Revised
W PC SOUTH 1S-66-2928-12NH		Jan-24-2017

Slot						
Name	Latitude	Longitude	Grid Northing	Grid Easting	North	East
PC SOUTH 1S-66-2928-12NH	N39 56 7.3320	W104 48 15.1560	1220069.3537	3195110.7954	14.33S	30.96E

Installation						
Name	Installation Position (Latitude)	Installation Position (Longitude)	Easting	Northing	Coord System Name	North Alignment
PC 1S-66-2928 PAD	N39 56 7.4760	W104 48 15.5520	3195079.8360	1220083.6821	CO83-NF on NORTH AMERICAN DATUM 1983 datum	Grid

Clearance Summary							
Offset WellName	Separation [ft]	MD[ft]	Diverging From[ft]	Ellipse Separation [ft]	Ellipse MD[ft]	Clearance Factor	Clearance MD[ft]
W PC SOUTH 1S-66-2928-13C DH	14.57	2100.00	7200.00	-164.03	17497.51	0.66	17497.51
W PC NORTH 1S-66-2928-11N H	14.57	2165.35	17497.51	-385.93	17497.51	0.48	17497.51
W PC SOUTH 1S-66-2928-14N H	29.14	2050.52	2000.00	-359.71	17497.51	0.52	17497.51
W PC NORTH 1S-66-2928-2NH	30.85	1150.02	17497.51	28.99	1150.02	3.29	17497.51
W PC NORTH 1S-66-2928-3NH	34.12	1200.00	17497.51	32.16	1230.31	2.88	17497.51
W PC NORTH 1S-66-2928-4CD H	42.00	1443.57	17497.51	39.67	1459.97	2.68	17497.51
W PC SOUTH 1S-66-2928-15N H	47.36	2000.00	1968.50	16.00	17497.51	1.02	17497.51
W PC NORTH 1S-66-2928-5NH	53.36	1625.55	17497.51	50.72	1640.42	2.41	17497.51
W PC SOUTH 1S-66-2928-16C DH	61.93	1949.59	1949.59	57.06	2001.31	1.44	17497.51
W PC NORTH 1S-66-2928-6NH	65.20	1712.49	17497.51	62.09	1738.85	1.90	17497.51
W PC SOUTH 1S-66-2928-17N H	76.50	1900.00	1870.08	72.06	1935.70	1.53	17497.51

All data is in Feet unless otherwise stated
Coordinates are from Slot MD's are from Rig and TVD's are from Rig (Planned Datum #1 5062.0ft above Mean Sea Level)
Vertical Section is from 0.00N 0.00E on azimuth 89.940 degrees
Prepared by IPT
Date Printed: 1-Feb-2017



SYSDRILL
Closest Approach + Clearance Factor Summary Report
Wellbore: W PC SOUTH 1S-66-2928-12NH (PWB)



Clearance Summary							
Offset WellName	Separation [ft]	MD[ft]	Diverging From[ft]	Ellipse Separation [ft]	Ellipse MD[ft]	Clearance Factor	Clearance MD[ft]
W PC NORTH 1S-66-2928-7CD H	77.27	1804.80	17497.51	73.83	1837.27	1.67	17497.51
W PC NORTH 1S-66-2928-8NH	90.32	1886.48	17497.51	85.87	1919.29	1.44	17497.51
W PC SOUTH 1S-66-2928-18N H	91.07	1849.35	1849.35	87.10	1886.48	2.02	17497.51
W PC SOUTH 1S-66-2928-19C DH	105.64	1800.00	1771.65	102.04	1837.27	2.48	17497.51
W PC NORTH 1S-66-2928-9NH	107.19	1876.17	17497.51	-24.03	17497.51	0.97	17497.51
W PC SOUTH 1S-66-2928-20N H	120.21	1749.20	17492.21	116.99	1771.65	2.56	17497.51
W PC NORTH 1S-66-2928-10C DH	122.46	1888.31	3625.33	-62.08	17497.51	0.91	17497.51
W POLLARD #1	1656.63	13372.60	13372.60	1397.77	13435.04	6.33	13582.68

