

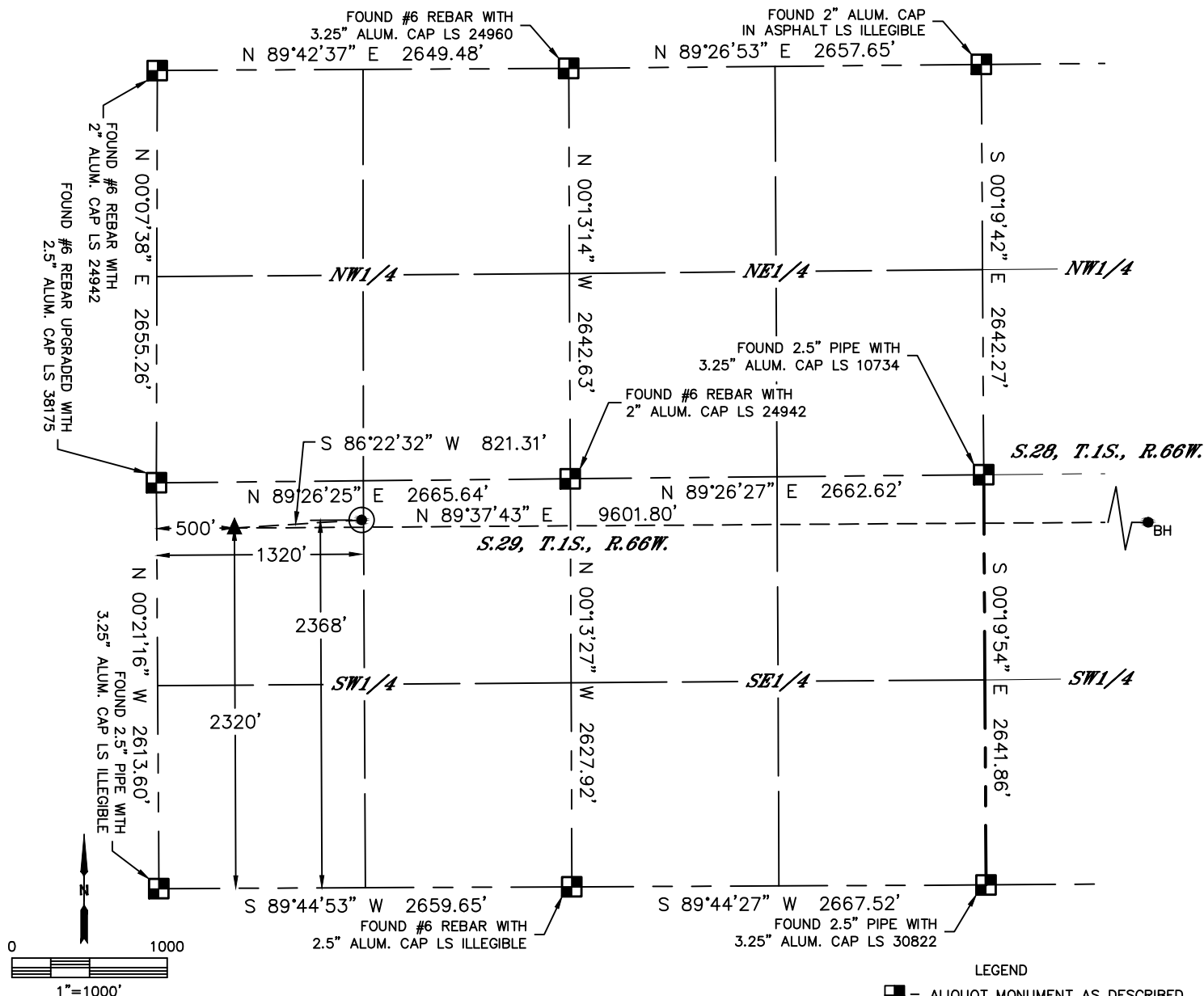


Lat40°, Inc. 6250 W. 10th Street, Unit 2, Greeley, CO 970-515-5294

# WELL LOCATION CERTIFICATE

PC SOUTH 1S-66-2928-12NH

SECTION: 29  
TOWNSHIP: 1S  
RANGE: 66W  
6TH. P.M.  
ADAMS COUNTY, CO



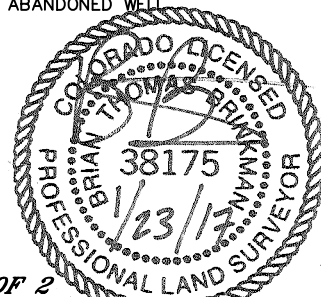
CLIENT: HRM RESOURCES II LLC					LANDMAN: DAN KELLY				
INSTRUMENT OPERATOR: BRIAN ROTTINGHAUS					SURVEY DATE: 1/10/2017		SURFACE USE: CROP LAND		
SHL FOOTAGE				SHL LAT °	SHL LONG °	SHL PDOP	SHL ELEV (FT.)	SHL 1/4/1/4	SHL S-T-R
2368	FSL	1320	FWL	39.93537	-104.80421	1.6	5062	NWSW	29-1S-66

BHL FOOTAGE				BHL LAT °	BHL LONG °	BHL S-T-R	EP LAT °	EP LONG °	EP S-T-R
2320	FSL	500	FEL	39.93520	-104.77290	28-1S-66	39.93524	-104.80714	29-1S-66

NOTE:  
1) Bearings shown are Grid Bearings of the Colorado State Plane Coordinate System, North Zone, North American Datum 1983. The lineal dimensions as contained herein are based upon the "U.S. Survey Foot."  
2) Distances to section lines measured at 90 degrees from said section lines.  
3) Ground elevations are based on an observed GPS elevation (NAVD 1988 DATUM).  
4) Latitude and Longitude shown are (NAD 83 DATUM).  
5) IMPROVEMENTS: See LOCATION DRAWING for all visible improvements within 500' of oil and gas location.  
6) This map does not represent a boundary survey.

NEAREST CULTURAL ITEMS	
BUILDING	±1378' W
BUILDING UNIT	±1468' W
HIGH OCCUPANCY BUILDING UNIT	5280'+
DESIGNATED OUTSIDE ACTIVITY AREA	5280'+
PUBLIC ROAD (EAST 132ND AVENUE)	±240' N
ABOVE GROUND UTILITY	±278' N
RAILROAD	±2856' SE
PROPERTY LINE	±222' N

- LEGEND
- = ALIQUOT MONUMENT AS DESCRIBED
  - = CALCULATED POSITION
  - = SURFACE HOLE LOCATION (SHL)
  - ▲ = ENTRY POINT LOCATION (EP)
  - BH = BOTTOM HOLE LOCATION (BHL)
  - ⊙ = EXISTING WELL
  - ⊙ = ABANDONED WELL



SHEET 1 OF 2

Brian T. Brinkman—On behalf of Lat40°, Inc.  
Colorado Licensed Professional Land Surveyor No. 38175  
DATE: 1/23/2017  
PROJECT#: 2016052

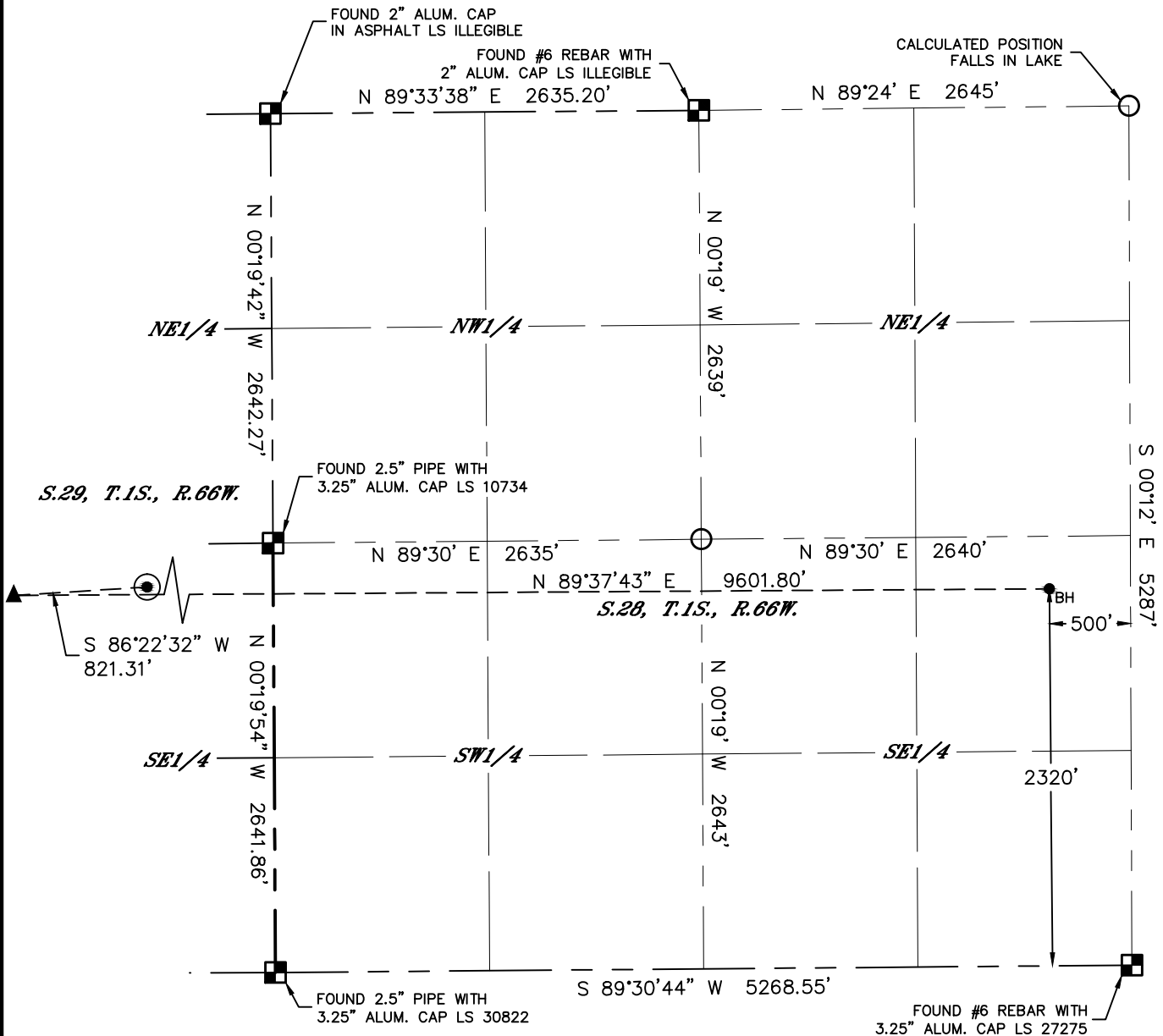


Lat40°, Inc. 6250 W. 10th Street, Unit 2, Greeley, CO 970-515-5294

# WELL LOCATION CERTIFICATE

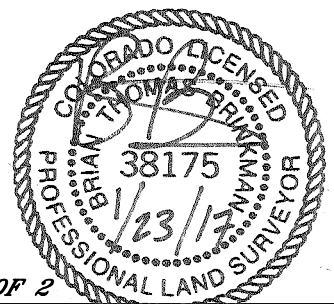
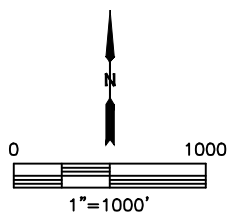
PC SOUTH 1S-66-2928-12NH

SECTION: 29  
TOWNSHIP: 1S  
RANGE: 66W  
6TH. P.M.  
ADAMS COUNTY, CO



## LEGEND

- = ALIQUOT MONUMENT AS DESCRIBED
- = CALCULATED POSITION
- = SURFACE HOLE LOCATION (SHL)
- ▲ = ENTRY POINT LOCATION (EP)
- = BOTTOM HOLE LOCATION (BHL)
- ⊙ = EXISTING WELL
- ⊙ = ABANDONED WELL



**SHEET 2 OF 2**

Brian T. Brinkman—On behalf of Lat40°, Inc.  
Colorado Licensed Professional Land Surveyor No. 38175  
DATE: 1/23/2017  
PROJECT#: 2016052