

EXTRACTION OIL & GAS

**Weld County
Sec 18-T4N-R68W
KENNEDY 16**

Original Wellbore

Plan: Proposal 1

Standard Planning Report

07 February, 2017



Project: Weld County
Site: Sec 18-T4N-R68W
Well: KENNEDY 16
Wellbore: Original Wellbore
Design: Proposal 1



Azimuths to True North
Magnetic North: 8.39°
Magnetic Field
Strength: 52362.6nT
Dip Angle: 66.76°
Date: 1/30/2017
Model: IGRF2015

WELL DETAILS: KENNEDY 16

+N/-S	+E/-W	Northing	Easting	4963.0	Latitude	Longitude	Slot
0.0	0.0	1358980.04	3128800.30	40° 19' 4.368 N	105° 2' 17.146 W		

SECTION DETAILS

Sec	MD	Inc	Azi	TVD	+N/-S	+E/-W	Dleg	TFace	VSec	Target
1	0.0	0.00	0.00	0.0	0.0	0.0	0.00	0.00	0.0	
2	1550.0	0.00	0.00	1550.0	0.0	0.0	0.00	0.00	0.0	
3	3402.2	37.04	175.90	3275.8	-576.7	41.3	2.00	175.90	291.3	
4	6274.2	37.04	175.90	5568.2	-2302.5	165.0	0.00	0.00	1163.1	
5	7256.0	90.00	88.62	6062.0	-2659.3	810.1	9.00	-87.83	1899.5	Kennedy 16 LP
6	11646.2	90.00	88.62	6062.0	-2553.5	5199.1	0.00	0.00	5792.3	Kennedy 16 PBHL

ANNOTATIONS

MD	Inc	Azi	TVD	+N/-S	+E/-W	VSec	Departure	Annotation
1550.0	0.00	0.00	1550.0	0.0	0.0	0.0	0.0	Start Build 2.00
3402.2	37.04	175.90	3275.8	-576.7	41.3	291.3	578.2	Start 2872.0 hold at 3402.2 MD
6274.2	37.04	175.90	5568.2	-2302.5	165.0	1163.1	2308.4	Start DLS 9.00 TFO -87.83
7256.0	90.00	88.62	6062.0	-2659.3	810.1	1899.5	3156.2	Start 4390.2 hold at 7256.0 MD
11646.2	90.00	88.62	6062.0	-2553.5	5199.1	5792.3	7546.5	TD at 11646.2

DESIGN TARGET DETAILS

Name	TVD	+N/-S	+E/-W	Northing	Easting	Latitude	Longitude	Shape
Kennedy 16 LP	6062.0	-2659.3	810.1	1356325.00	3129624.28	40° 18' 38.088 N	105° 2' 6.688 W	Point
- plan hits target center								
Kennedy 16 PBHL	6062.0	-2553.5	5199.1	1356453.67	3134012.62	40° 18' 39.128 N	105° 1' 10.031 W	Point
- plan hits target center								

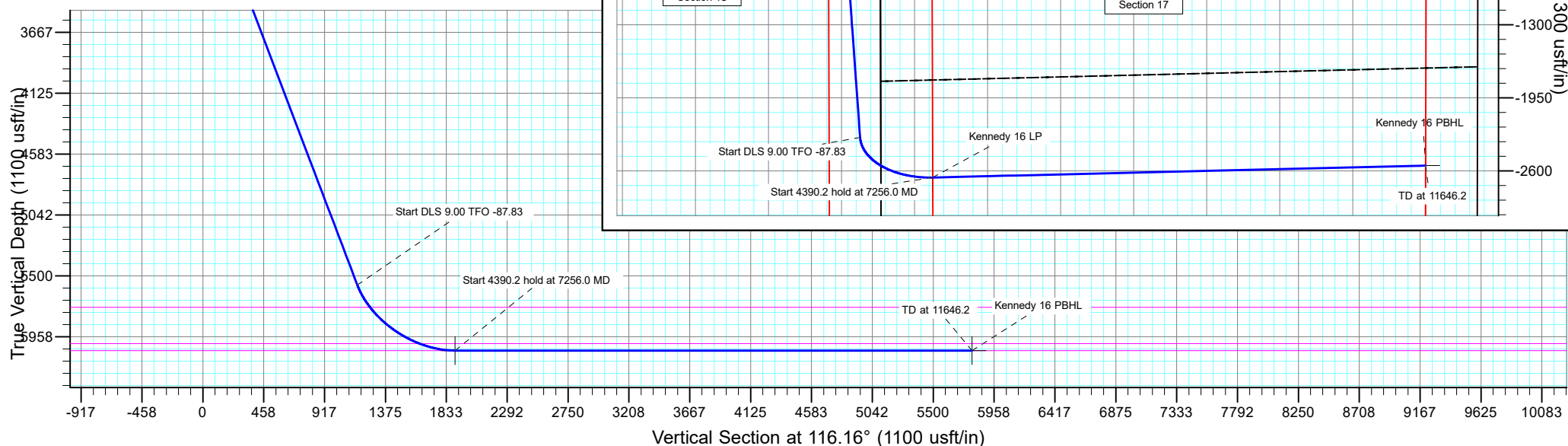
FORMATION TOP DETAILS

TVDPath	MDPath	Formation
2210.0	2216.0	PARKMAN
2810.0	2854.6	SUSSEX
3250.0	3370.0	SHANNON
5737.0	6490.9	NIOBRARA
6010.0	6965.5	FORT HAYS
6062.0	7253.0	CODELL

PROJECT DETAILS: Weld County

Geodetic System: US State Plane 1983
Datum: North American Datum 1983
Ellipsoid: GRS 1980
Zone: Colorado Northern Zone
System Datum: Mean Sea Level

SHL:
851' FNL, 343' FEL
Sec 18-T4N-R68W
BHL:
1779' FNL, 460' FEL
Sec 17-T4N-R68W
LP:
1776' FNL, 460' FWL
Sec 17-T4N-R68W



Planning Report

Database:	EDT_32Bit_ODBC	Local Co-ordinate Reference:	Well KENNEDY 16
Company:	EXTRACTION OIL & GAS	TVD Reference:	KB 11' @ 4974.0usft
Project:	Weld County	MD Reference:	KB 11' @ 4974.0usft
Site:	Sec 18-T4N-R68W	North Reference:	True
Well:	KENNEDY 16	Survey Calculation Method:	Minimum Curvature
Wellbore:	Original Wellbore		
Design:	Proposal 1		

Project	Weld County		
Map System:	US State Plane 1983	System Datum:	Mean Sea Level
Geo Datum:	North American Datum 1983		
Map Zone:	Colorado Northern Zone		

Site		Sec 18-T4N-R68W			
Site Position:		Northing:	1,359,838.99 usft	Latitude:	40° 19' 12.839 N
From:	Lat/Long	Easting:	3,129,136.57 usft	Longitude:	105° 2' 12.746 W
Position Uncertainty:	0.0 usft	Slot Radius:	13.200 in	Grid Convergence:	0.30 °

Well		KENNEDY 16				
Well Position	+N/-S	-857.2 usft	Northing:	1,358,980.04 usft	Latitude:	40° 19' 4.368 N
	+E/-W	-340.8 usft	Easting:	3,128,800.30 usft	Longitude:	105° 2' 17.146 W
Position Uncertainty		0.0 usft	Wellhead Elevation:		Ground Level:	4,963.0 usft

Wellbore	Original Wellbore				
Magnetics	Model Name	Sample Date	Declination (°)	Dip Angle (°)	Field Strength (nT)
	IGRF2015	1/30/2017	8.39	66.76	52,362.60609814

Design	Proposal 1			
Audit Notes:				
Version:	Phase:	PROTOTYPE	Tie On Depth:	0.0
Vertical Section:	Depth From (TVD) (usft)	+N/-S (usft)	+E/-W (usft)	Direction (°)
	0.0	0.0	0.0	116.16

Plan Survey Tool Program			Date	2/7/2017	
Depth From (usft)	Depth To (usft)	Survey (Wellbore)	Tool Name	Remarks	
1	0.0	11,646.2	Proposal 1 (Original Wellbore)	MWD OWSG Rev 2	OWSG MWD - Standard

Plan Sections										
Measured Depth (usft)	Inclination (°)	Azimuth (°)	Vertical Depth (usft)	+N/-S (usft)	+E/-W (usft)	Dogleg Rate (°/100ft)	Build Rate (°/100ft)	Turn Rate (°/100ft)	TFO (°)	Target
0.0	0.00	0.00	0.0	0.0	0.0	0.00	0.00	0.00	0.00	
1,550.0	0.00	0.00	1,550.0	0.0	0.0	0.00	0.00	0.00	0.00	
3,402.2	37.04	175.90	3,275.8	-576.7	41.3	2.00	2.00	0.00	175.90	
6,274.2	37.04	175.90	5,568.2	-2,302.5	165.0	0.00	0.00	0.00	0.00	
7,256.0	90.00	88.62	6,062.0	-2,659.3	810.1	9.00	5.39	-8.89	-87.83	Kennedy 16 LP
11,646.2	90.00	88.62	6,062.0	-2,553.5	5,199.1	0.00	0.00	0.00	0.00	Kennedy 16 PBHL

Planning Report

Database:	EDT_32Bit_ODBC	Local Co-ordinate Reference:	Well KENNEDY 16
Company:	EXTRACTION OIL & GAS	TVD Reference:	KB 11' @ 4974.0usft
Project:	Weld County	MD Reference:	KB 11' @ 4974.0usft
Site:	Sec 18-T4N-R68W	North Reference:	True
Well:	KENNEDY 16	Survey Calculation Method:	Minimum Curvature
Wellbore:	Original Wellbore		
Design:	Proposal 1		

Planned Survey									
Measured Depth (usft)	Inclination (°)	Azimuth (°)	Vertical Depth (usft)	+N/-S (usft)	+E/-W (usft)	Vertical Section (usft)	Dogleg Rate (°/100ft)	Build Rate (°/100ft)	Turn Rate (°/100ft)
0.0	0.00	0.00	0.0	0.0	0.0	0.0	0.00	0.00	0.00
100.0	0.00	0.00	100.0	0.0	0.0	0.0	0.00	0.00	0.00
200.0	0.00	0.00	200.0	0.0	0.0	0.0	0.00	0.00	0.00
300.0	0.00	0.00	300.0	0.0	0.0	0.0	0.00	0.00	0.00
400.0	0.00	0.00	400.0	0.0	0.0	0.0	0.00	0.00	0.00
500.0	0.00	0.00	500.0	0.0	0.0	0.0	0.00	0.00	0.00
600.0	0.00	0.00	600.0	0.0	0.0	0.0	0.00	0.00	0.00
700.0	0.00	0.00	700.0	0.0	0.0	0.0	0.00	0.00	0.00
800.0	0.00	0.00	800.0	0.0	0.0	0.0	0.00	0.00	0.00
900.0	0.00	0.00	900.0	0.0	0.0	0.0	0.00	0.00	0.00
1,000.0	0.00	0.00	1,000.0	0.0	0.0	0.0	0.00	0.00	0.00
1,100.0	0.00	0.00	1,100.0	0.0	0.0	0.0	0.00	0.00	0.00
1,200.0	0.00	0.00	1,200.0	0.0	0.0	0.0	0.00	0.00	0.00
1,300.0	0.00	0.00	1,300.0	0.0	0.0	0.0	0.00	0.00	0.00
1,400.0	0.00	0.00	1,400.0	0.0	0.0	0.0	0.00	0.00	0.00
1,500.0	0.00	0.00	1,500.0	0.0	0.0	0.0	0.00	0.00	0.00
1,550.0	0.00	0.00	1,550.0	0.0	0.0	0.0	0.00	0.00	0.00
Start Build 2.00									
1,600.0	1.00	175.90	1,600.0	-0.4	0.0	0.2	2.00	2.00	0.00
1,700.0	3.00	175.90	1,699.9	-3.9	0.3	2.0	2.00	2.00	0.00
1,800.0	5.00	175.90	1,799.7	-10.9	0.8	5.5	2.00	2.00	0.00
1,900.0	7.00	175.90	1,899.1	-21.3	1.5	10.8	2.00	2.00	0.00
2,000.0	9.00	175.90	1,998.2	-35.2	2.5	17.8	2.00	2.00	0.00
2,100.0	11.00	175.90	2,096.6	-52.5	3.8	26.5	2.00	2.00	0.00
2,200.0	13.00	175.90	2,194.4	-73.2	5.2	37.0	2.00	2.00	0.00
2,216.0	13.32	175.90	2,210.0	-76.9	5.5	38.8	2.00	2.00	0.00
PARKMAN									
2,300.0	15.00	175.90	2,291.5	-97.4	7.0	49.2	2.00	2.00	0.00
2,400.0	17.00	175.90	2,387.6	-124.9	8.9	63.1	2.00	2.00	0.00
2,500.0	19.00	175.90	2,482.7	-155.7	11.2	78.6	2.00	2.00	0.00
2,600.0	21.00	175.90	2,576.6	-189.8	13.6	95.9	2.00	2.00	0.00
2,700.0	23.00	175.90	2,669.4	-227.2	16.3	114.7	2.00	2.00	0.00
2,800.0	25.00	175.90	2,760.7	-267.7	19.2	135.2	2.00	2.00	0.00
2,854.6	26.09	175.90	2,810.0	-291.2	20.9	147.1	2.00	2.00	0.00
SUSSEX									
2,900.0	27.00	175.90	2,850.6	-311.4	22.3	157.3	2.00	2.00	0.00
3,000.0	29.00	175.90	2,938.9	-358.3	25.7	181.0	2.00	2.00	0.00
3,100.0	31.00	175.90	3,025.5	-408.1	29.2	206.2	2.00	2.00	0.00
3,200.0	33.00	175.90	3,110.3	-461.0	33.0	232.9	2.00	2.00	0.00
3,300.0	35.00	175.90	3,193.2	-516.8	37.0	261.1	2.00	2.00	0.00
3,370.0	36.40	175.90	3,250.0	-557.5	39.9	281.6	2.00	2.00	0.00
SHANNON									
3,402.2	37.04	175.90	3,275.8	-576.7	41.3	291.3	2.00	2.00	0.00
Start 2872.0 hold at 3402.2 MD									
3,500.0	37.04	175.90	3,353.9	-635.5	45.5	321.0	0.00	0.00	0.00
3,600.0	37.04	175.90	3,433.7	-695.6	49.8	351.4	0.00	0.00	0.00
3,700.0	37.04	175.90	3,513.5	-755.7	54.2	381.7	0.00	0.00	0.00
3,800.0	37.04	175.90	3,593.3	-815.7	58.5	412.1	0.00	0.00	0.00
3,900.0	37.04	175.90	3,673.2	-875.8	62.8	442.4	0.00	0.00	0.00
4,000.0	37.04	175.90	3,753.0	-935.9	67.1	472.8	0.00	0.00	0.00
4,100.0	37.04	175.90	3,832.8	-996.0	71.4	503.1	0.00	0.00	0.00
4,200.0	37.04	175.90	3,912.6	-1,056.1	75.7	533.5	0.00	0.00	0.00
4,300.0	37.04	175.90	3,992.4	-1,116.2	80.0	563.9	0.00	0.00	0.00

Planning Report

Database:	EDT_32Bit_ODBC	Local Co-ordinate Reference:	Well KENNEDY 16
Company:	EXTRACTION OIL & GAS	TVD Reference:	KB 11' @ 4974.0usft
Project:	Weld County	MD Reference:	KB 11' @ 4974.0usft
Site:	Sec 18-T4N-R68W	North Reference:	True
Well:	KENNEDY 16	Survey Calculation Method:	Minimum Curvature
Wellbore:	Original Wellbore		
Design:	Proposal 1		

Planned Survey									
Measured Depth (usft)	Inclination (°)	Azimuth (°)	Vertical Depth (usft)	+N/-S (usft)	+E/-W (usft)	Vertical Section (usft)	Dogleg Rate (°/100ft)	Build Rate (°/100ft)	Turn Rate (°/100ft)
4,400.0	37.04	175.90	4,072.2	-1,176.3	84.3	594.2	0.00	0.00	0.00
4,500.0	37.04	175.90	4,152.1	-1,236.4	88.6	624.6	0.00	0.00	0.00
4,600.0	37.04	175.90	4,231.9	-1,296.5	92.9	654.9	0.00	0.00	0.00
4,700.0	37.04	175.90	4,311.7	-1,356.5	97.2	685.3	0.00	0.00	0.00
4,800.0	37.04	175.90	4,391.5	-1,416.6	101.5	715.6	0.00	0.00	0.00
4,900.0	37.04	175.90	4,471.3	-1,476.7	105.8	746.0	0.00	0.00	0.00
5,000.0	37.04	175.90	4,551.2	-1,536.8	110.1	776.3	0.00	0.00	0.00
5,100.0	37.04	175.90	4,631.0	-1,596.9	114.4	806.7	0.00	0.00	0.00
5,200.0	37.04	175.90	4,710.8	-1,657.0	118.7	837.0	0.00	0.00	0.00
5,300.0	37.04	175.90	4,790.6	-1,717.1	123.0	867.4	0.00	0.00	0.00
5,400.0	37.04	175.90	4,870.4	-1,777.2	127.4	897.8	0.00	0.00	0.00
5,500.0	37.04	175.90	4,950.2	-1,837.3	131.7	928.1	0.00	0.00	0.00
5,600.0	37.04	175.90	5,030.1	-1,897.3	136.0	958.5	0.00	0.00	0.00
5,700.0	37.04	175.90	5,109.9	-1,957.4	140.3	988.8	0.00	0.00	0.00
5,800.0	37.04	175.90	5,189.7	-2,017.5	144.6	1,019.2	0.00	0.00	0.00
5,900.0	37.04	175.90	5,269.5	-2,077.6	148.9	1,049.5	0.00	0.00	0.00
6,000.0	37.04	175.90	5,349.3	-2,137.7	153.2	1,079.9	0.00	0.00	0.00
6,100.0	37.04	175.90	5,429.1	-2,197.8	157.5	1,110.2	0.00	0.00	0.00
6,200.0	37.04	175.90	5,509.0	-2,257.9	161.8	1,140.6	0.00	0.00	0.00
6,274.2	37.04	175.90	5,568.2	-2,302.5	165.0	1,163.1	0.00	0.00	0.00
Start DLS 9.00 TFO -87.83									
6,300.0	37.19	172.06	5,588.8	-2,317.9	166.6	1,171.4	9.00	0.58	-14.88
6,350.0	37.83	164.74	5,628.4	-2,347.7	172.8	1,190.0	9.00	1.28	-14.64
6,400.0	38.91	157.70	5,667.7	-2,377.0	182.8	1,211.9	9.00	2.15	-14.09
6,450.0	40.38	151.03	5,706.2	-2,405.8	196.6	1,237.0	9.00	2.95	-13.33
6,490.9	41.86	145.90	5,737.0	-2,428.7	210.6	1,259.7	9.00	3.61	-12.54
NIOBRARA									
6,500.0	42.22	144.81	5,743.8	-2,433.7	214.1	1,265.0	9.00	3.94	-12.08
6,550.0	44.37	139.04	5,780.2	-2,460.6	235.3	1,295.9	9.00	4.30	-11.54
6,600.0	46.78	133.72	5,815.2	-2,486.4	259.9	1,329.4	9.00	4.83	-10.64
6,650.0	49.43	128.82	5,848.6	-2,510.9	287.9	1,365.3	9.00	5.29	-9.79
6,700.0	52.26	124.31	5,880.1	-2,534.0	319.0	1,403.4	9.00	5.67	-9.02
6,750.0	55.26	120.15	5,909.7	-2,555.5	353.1	1,443.5	9.00	5.99	-8.34
6,800.0	58.38	116.28	5,937.1	-2,575.2	390.0	1,485.3	9.00	6.25	-7.74
6,850.0	61.61	112.66	5,962.1	-2,593.1	429.4	1,528.6	9.00	6.47	-7.23
6,900.0	64.94	109.26	5,984.6	-2,609.1	471.1	1,573.0	9.00	6.65	-6.80
6,950.0	68.33	106.05	6,004.4	-2,623.0	514.8	1,618.4	9.00	6.79	-6.43
6,965.5	69.40	105.08	6,010.0	-2,626.9	528.8	1,632.7	9.00	6.87	-6.23
FORT HAYS									
7,000.0	71.79	102.98	6,021.4	-2,634.7	560.3	1,664.4	9.00	6.93	-6.09
7,050.0	75.29	100.03	6,035.6	-2,644.3	607.3	1,710.8	9.00	7.00	-5.89
7,100.0	78.83	97.18	6,046.8	-2,651.6	655.5	1,757.3	9.00	7.08	-5.71
7,150.0	82.39	94.40	6,055.0	-2,656.5	704.5	1,803.5	9.00	7.13	-5.57
7,200.0	85.98	91.66	6,060.0	-2,659.2	754.2	1,849.2	9.00	7.16	-5.48
7,250.0	89.57	88.94	6,062.0	-2,659.4	804.1	1,894.2	9.00	7.18	-5.43
7,253.0	89.57	88.94	6,062.0	-2,659.4	807.1	1,896.8	0.00	0.00	0.00
CODELL									
7,256.0	90.00	88.62	6,062.0	-2,659.3	810.1	1,899.5	18.00	14.37	-10.84
Start 4390.2 hold at 7256.0 MD									
7,300.0	90.00	88.62	6,062.0	-2,658.2	854.1	1,938.5	0.00	0.00	0.00
7,400.0	90.00	88.62	6,062.0	-2,655.8	954.1	2,027.2	0.00	0.00	0.00
7,500.0	90.00	88.62	6,062.0	-2,653.4	1,054.1	2,115.8	0.00	0.00	0.00
7,600.0	90.00	88.62	6,062.0	-2,651.0	1,154.0	2,204.5	0.00	0.00	0.00

Planning Report

Database:	EDT_32Bit_ODBC	Local Co-ordinate Reference:	Well KENNEDY 16
Company:	EXTRACTION OIL & GAS	TVD Reference:	KB 11' @ 4974.0usft
Project:	Weld County	MD Reference:	KB 11' @ 4974.0usft
Site:	Sec 18-T4N-R68W	North Reference:	True
Well:	KENNEDY 16	Survey Calculation Method:	Minimum Curvature
Wellbore:	Original Wellbore		
Design:	Proposal 1		

Planned Survey									
Measured Depth (usft)	Inclination (°)	Azimuth (°)	Vertical Depth (usft)	+N/-S (usft)	+E/-W (usft)	Vertical Section (usft)	Dogleg Rate (°/100ft)	Build Rate (°/100ft)	Turn Rate (°/100ft)
7,700.0	90.00	88.62	6,062.0	-2,648.6	1,254.0	2,293.2	0.00	0.00	0.00
7,800.0	90.00	88.62	6,062.0	-2,646.2	1,354.0	2,381.9	0.00	0.00	0.00
7,900.0	90.00	88.62	6,062.0	-2,643.8	1,453.9	2,470.5	0.00	0.00	0.00
8,000.0	90.00	88.62	6,062.0	-2,641.4	1,553.9	2,559.2	0.00	0.00	0.00
8,100.0	90.00	88.62	6,062.0	-2,639.0	1,653.9	2,647.9	0.00	0.00	0.00
8,200.0	90.00	88.62	6,062.0	-2,636.5	1,753.9	2,736.5	0.00	0.00	0.00
8,300.0	90.00	88.62	6,062.0	-2,634.1	1,853.8	2,825.2	0.00	0.00	0.00
8,400.0	90.00	88.62	6,062.0	-2,631.7	1,953.8	2,913.9	0.00	0.00	0.00
8,500.0	90.00	88.62	6,062.0	-2,629.3	2,053.8	3,002.5	0.00	0.00	0.00
8,600.0	90.00	88.62	6,062.0	-2,626.9	2,153.7	3,091.2	0.00	0.00	0.00
8,700.0	90.00	88.62	6,062.0	-2,624.5	2,253.7	3,179.9	0.00	0.00	0.00
8,800.0	90.00	88.62	6,062.0	-2,622.1	2,353.7	3,268.6	0.00	0.00	0.00
8,900.0	90.00	88.62	6,062.0	-2,619.7	2,453.7	3,357.2	0.00	0.00	0.00
9,000.0	90.00	88.62	6,062.0	-2,617.3	2,553.6	3,445.9	0.00	0.00	0.00
9,100.0	90.00	88.62	6,062.0	-2,614.9	2,653.6	3,534.6	0.00	0.00	0.00
9,200.0	90.00	88.62	6,062.0	-2,612.4	2,753.6	3,623.2	0.00	0.00	0.00
9,300.0	90.00	88.62	6,062.0	-2,610.0	2,853.5	3,711.9	0.00	0.00	0.00
9,400.0	90.00	88.62	6,062.0	-2,607.6	2,953.5	3,800.6	0.00	0.00	0.00
9,500.0	90.00	88.62	6,062.0	-2,605.2	3,053.5	3,889.2	0.00	0.00	0.00
9,600.0	90.00	88.62	6,062.0	-2,602.8	3,153.5	3,977.9	0.00	0.00	0.00
9,700.0	90.00	88.62	6,062.0	-2,600.4	3,253.4	4,066.6	0.00	0.00	0.00
9,800.0	90.00	88.62	6,062.0	-2,598.0	3,353.4	4,155.3	0.00	0.00	0.00
9,900.0	90.00	88.62	6,062.0	-2,595.6	3,453.4	4,243.9	0.00	0.00	0.00
10,000.0	90.00	88.62	6,062.0	-2,593.2	3,553.3	4,332.6	0.00	0.00	0.00
10,100.0	90.00	88.62	6,062.0	-2,590.8	3,653.3	4,421.3	0.00	0.00	0.00
10,200.0	90.00	88.62	6,062.0	-2,588.3	3,753.3	4,509.9	0.00	0.00	0.00
10,300.0	90.00	88.62	6,062.0	-2,585.9	3,853.3	4,598.6	0.00	0.00	0.00
10,400.0	90.00	88.62	6,062.0	-2,583.5	3,953.2	4,687.3	0.00	0.00	0.00
10,500.0	90.00	88.62	6,062.0	-2,581.1	4,053.2	4,775.9	0.00	0.00	0.00
10,600.0	90.00	88.62	6,062.0	-2,578.7	4,153.2	4,864.6	0.00	0.00	0.00
10,700.0	90.00	88.62	6,062.0	-2,576.3	4,253.1	4,953.3	0.00	0.00	0.00
10,800.0	90.00	88.62	6,062.0	-2,573.9	4,353.1	5,042.0	0.00	0.00	0.00
10,900.0	90.00	88.62	6,062.0	-2,571.5	4,453.1	5,130.6	0.00	0.00	0.00
11,000.0	90.00	88.62	6,062.0	-2,569.1	4,553.0	5,219.3	0.00	0.00	0.00
11,100.0	90.00	88.62	6,062.0	-2,566.7	4,653.0	5,308.0	0.00	0.00	0.00
11,200.0	90.00	88.62	6,062.0	-2,564.2	4,753.0	5,396.6	0.00	0.00	0.00
11,300.0	90.00	88.62	6,062.0	-2,561.8	4,853.0	5,485.3	0.00	0.00	0.00
11,400.0	90.00	88.62	6,062.0	-2,559.4	4,952.9	5,574.0	0.00	0.00	0.00
11,500.0	90.00	88.62	6,062.0	-2,557.0	5,052.9	5,662.6	0.00	0.00	0.00
11,600.0	90.00	88.62	6,062.0	-2,554.6	5,152.9	5,751.3	0.00	0.00	0.00
11,646.2	90.00	88.62	6,062.0	-2,553.5	5,199.1	5,792.3	0.00	0.00	0.00
TD at 11646.2									

Planning Report

Database:	EDT_32Bit_ODBC	Local Co-ordinate Reference:	Well KENNEDY 16
Company:	EXTRACTION OIL & GAS	TVD Reference:	KB 11' @ 4974.0usft
Project:	Weld County	MD Reference:	KB 11' @ 4974.0usft
Site:	Sec 18-T4N-R68W	North Reference:	True
Well:	KENNEDY 16	Survey Calculation Method:	Minimum Curvature
Wellbore:	Original Wellbore		
Design:	Proposal 1		

Design Targets									
Target Name									
- hit/miss target	Dip Angle	Dip Dir.	TVD	+N/-S	+E/-W	Northing	Easting	Latitude	Longitude
- Shape	(°)	(°)	(usft)	(usft)	(usft)	(usft)	(usft)		
Kennedy 16 LP	0.00	0.00	6,062.0	-2,659.3	810.1	1,356,325.00	3,129,624.28	40° 18' 38.088 N	105° 2' 6.688 W
- plan hits target center									
- Point									
Kennedy 16 PBHL	0.00	0.00	6,062.0	-2,553.5	5,199.1	1,356,453.67	3,134,012.62	40° 18' 39.128 N	105° 1' 10.031 W
- plan hits target center									
- Point									

Formations						
Measured Depth	Vertical Depth	Name	Lithology	Dip	Dip Direction	
(usft)	(usft)			(°)	(°)	
2,216.0	2,210.0	PARKMAN				
2,854.6	2,810.0	SUSSEX				
3,370.0	3,250.0	SHANNON				
6,490.9	5,737.0	NIOBRARA				
6,965.5	6,010.0	FORT HAYS				
7,253.0	6,062.0	CODELL				

Plan Annotations					
Measured Depth	Vertical Depth	Local Coordinates			
(usft)	(usft)	+N/-S	+E/-W	Comment	
(usft)	(usft)	(usft)	(usft)		
1,550.0	1,550.0	0.0	0.0	Start Build 2.00	
3,402.2	3,275.8	-576.7	41.3	Start 2872.0 hold at 3402.2 MD	
6,274.2	5,568.2	-2,302.5	165.0	Start DLS 9.00 TFO -87.83	
7,256.0	6,062.0	-2,659.3	810.1	Start 4390.2 hold at 7256.0 MD	
11,646.2	6,062.0	-2,553.5	5,199.1	TD at 11646.2	