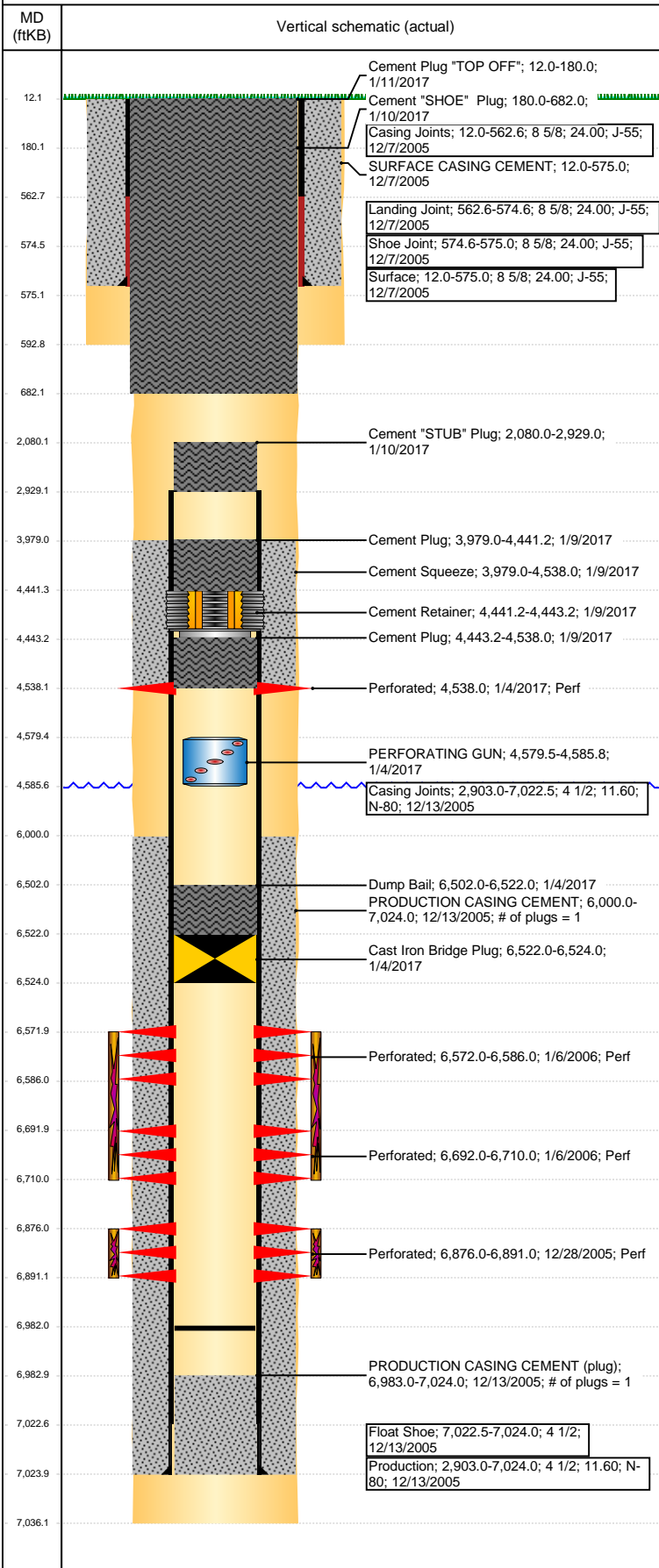


Well Name: KLEIN B19-06

VERTICAL - ORIGINAL HOLE, 2/8/2017 10:52:07 AM



Well Header

API 05-123-23345	Business Unit DJ BASIN	District 15	Well Config VERTICAL
Original KB Elevation (ft) 4,635	KB - GL / MSL (ftKB) 12.00	Spud Date 12/6/2005	P & A Date 1/10/2017

Comment

Directions To Well
HWY 34 & 51, S 1/2, ON NS OF HOUSE GO W 1/2, N 2/10, SW 1/10 INTO

Congressional Location

Quarter 3 SE	Quarter 4 NW	Section 19	Township 5	Twnshp N/S Dir N	Range 64	Range E/W Dir W
-----------------	-----------------	---------------	---------------	---------------------	-------------	--------------------

Bottom Hole Location

North-South Distance (ft)	From N or S Line	East-West Distance (ft)	From E or W Line
---------------------------	------------------	-------------------------	------------------

Plug Back Total Depths

Date	Depth (ftKB)	Method	Com
12/13/2005	6,983.0	CASING TALLY	LATCH DOWN COLLAR
12/28/2005	6,979.0	CASED HOLE LOG	DEPTH LOGGER ON CBL
2/4/2006	6,982.0	TAG	C/ O & LAND TBG

Wellbore Sections

Section Des	Size (in)	Act Top, MD (ftKB)	Act Btm, MD (ftKB)
SURFACE	12 1/4	12	593
PRODUCTION	7 7/8	593	7,036

Zone Statuses

Zone Name	Status Date	Status	Fluid Type	Job	Prod Method
NIOBRARA	1/10/2006	PR	Water	DRILLING/CO...	Flowing
NIOBRARA	2/11/2010	PR	Water	ABANDON WE...	
NIOBRARA	1/4/2017	P&A	Water	ABANDON WE...	Flowing
CODELL	1/10/2006	PR	Water	DRILLING/CO...	
CODELL	2/11/2010	PR	Water	ABANDON WE...	
CODELL	10/16/2016	SI			
CODELL	1/4/2017	P&A		ABANDON WE...	

Casing Strings

Casing Description	Run Date	OD (in)	W/Len (L...)	Grade	Top, MD (ft...)	MD (ftKB)
Surface	12/7/2005	8 5/8	24.00	J-55	12.0	575.0

Production, 7,024.0ftKB

Casing Description	Run Date	OD (in)	W/Len (L...)	Grade	Top, MD (ft...)	MD (ftKB)
Production	12/13/2005	4 1/2	11.60	N-80	12.0	7,024.0

Cement

Description	Top Depth (ftKB)	Bottom Depth (ftKB)
SURFACE CASING CEMENT	12.0	575.0
PRODUCTION CASING CEMENT	6,000.0	7,024.0
Dump Bail	6,502.0	6,522.0
Cement Squeeze	3,979.0	4,538.0
Cement Plug	4,443.2	4,538.0
Cement Plug	3,979.0	4,441.2
Cement "STUB" Plug	2,080.0	2,929.0
Cement "SHOE" Plug	180.0	682.0
Cement Plug "TOP OFF"	12.0	180.0

Tubing Strings

Tubing Description	Run Date	String...	ID (in)	Wt (lb/ft)	Grade	Len (ft)	Set De...
Tubing - Production	2/4/2006	2 3/8	2.00	4.70	J-55	6,852.80	

Other In Hole

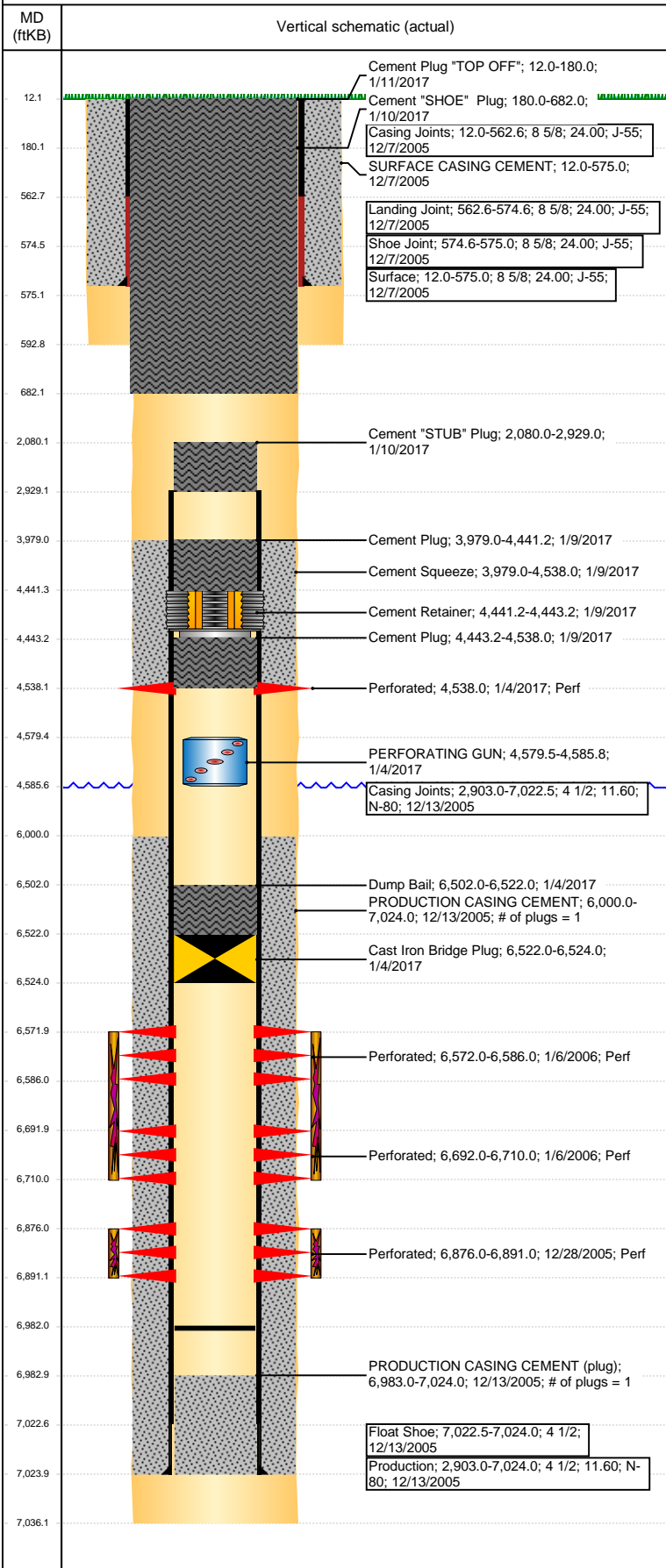
Run Date	Des	OD (in)	Top (ftKB)	Btm (ftKB)
1/4/2017	PERFORATING GUN	3 1/8	4,579.5	4,585.8
1/4/2017	Cast Iron Bridge Plug	3.99	6,522.0	6,524.0
1/9/2017	Cement Retainer	3.99	4,441.2	4,443.2

Logs

Date	Type	Top, MD (ftKB)	Btm, MD (ftKB)
12/12/2005	COMPENSATED DENSITY	3,100.0	7,012.0

Well Name: KLEIN B19-06

VERTICAL - ORIGINAL HOLE, 2/8/2017 10:52:10 AM



Logs			
Date	Type	Top, MD (ftKB)	Btn, MD (ftKB)
12/12/2005	INDUCTION	575.0	7,032.0
12/28/2005	CBL/CCL/GR	575.0	7,032.0
5/23/2016	GYRO	0.0	6,800.0

Perforation Data					
Linked Zone	Bnch/St g	Sum of Entered Shot Total	Top (ftKB)	Btn (ftKB)	Date
CODELL, ORIGINAL HOLE		4	4,538.00	4,538.00	1/4/2017
NIOBRARA, ORIGINAL HOLE		84	6,572.00	6,586.00	1/6/2006
NIOBRARA, ORIGINAL HOLE		108	6,692.00	6,710.00	1/6/2006
CODELL, ORIGINAL HOLE		60	6,876.00	6,891.00	12/28/2005
Total (Sum)		256			

Stimulation Intervals		
Start Date	Primary Job Type	
1/6/2006	DRILLING/COMPLETION - ORIGINAL	
Technical Result	Tech Result Details	Tech Result Note
Comment		

Start Date	Primary Job Type	
1/6/2006	DRILLING/COMPLETION - ORIGINAL	
Technical Result	Tech Result Details	Tech Result Note
Comment		