

Brian T. Brinkman—On behalf of L&L, Inc.  
Colorado Licensed Professional Land Surveyor No. 38175      DATE: 1/23/2017  
PROJECT#: 2016052

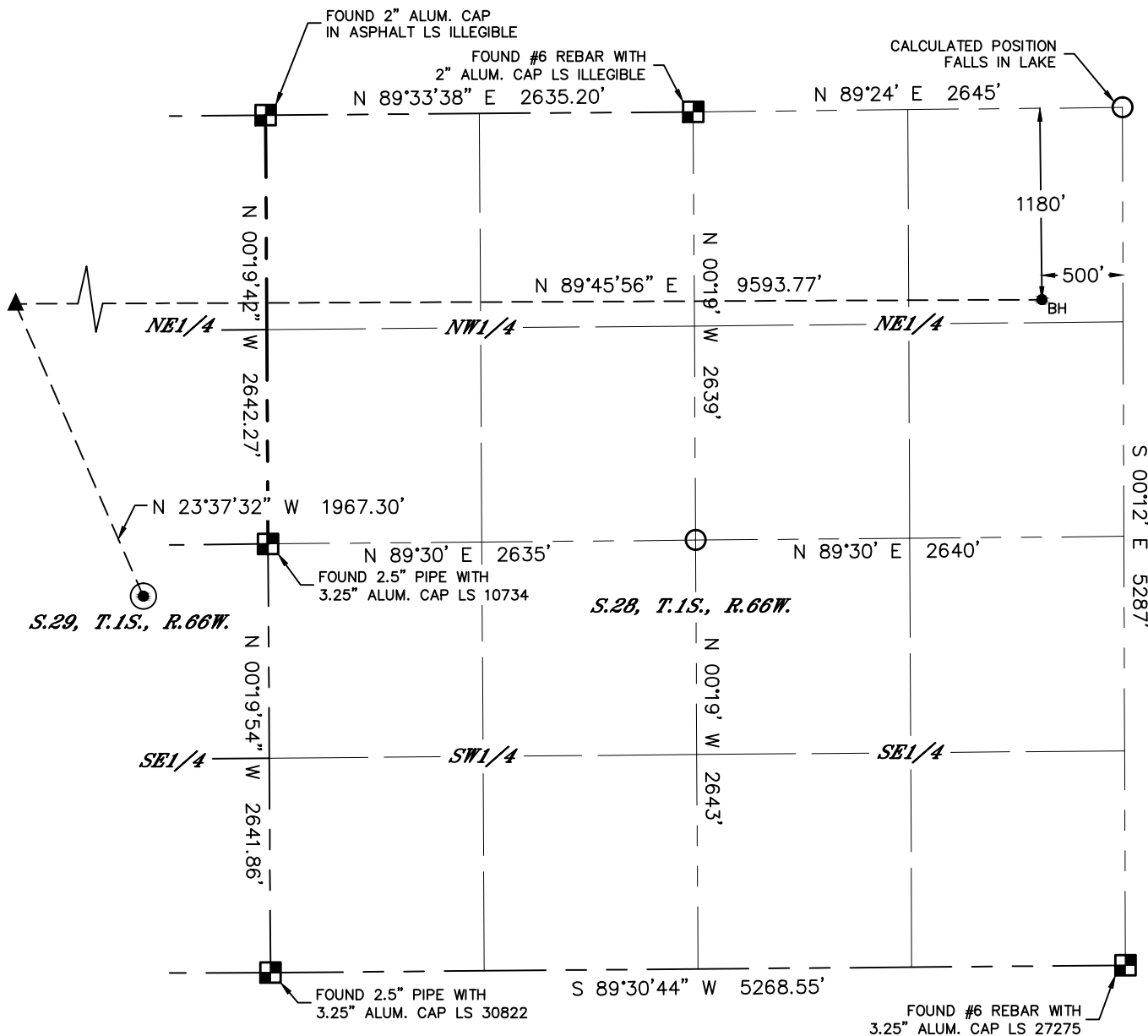


Lat40°, Inc. 6250 W. 10th Street, Unit 2, Greeley, CO 970-515-5294

# WELL LOCATION CERTIFICATE

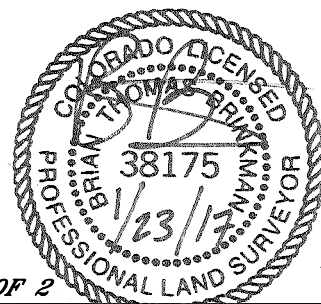
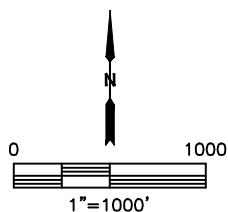
PC NORTH 1S-66-2928-5NH

SECTION: 29  
TOWNSHIP: 1S  
RANGE: 66W  
6TH. P.M.  
ADAMS COUNTY, CO



## LEGEND

- = ALIQUOT MONUMENT AS DESCRIBED
- = CALCULATED POSITION
- = SURFACE HOLE LOCATION (SHL)
- ▲ = ENTRY POINT LOCATION (EP)
- = BOTTOM HOLE LOCATION (BHL)
- ⊙ = EXISTING WELL
- ⊙ = ABANDONED WELL



**SHEET 2 OF 2**

Brian T. Brinkman—On behalf of Lat40°, Inc.  
Colorado Licensed Professional Land Surveyor No. 38175  
DATE: 1/23/2017  
PROJECT#: 2016052