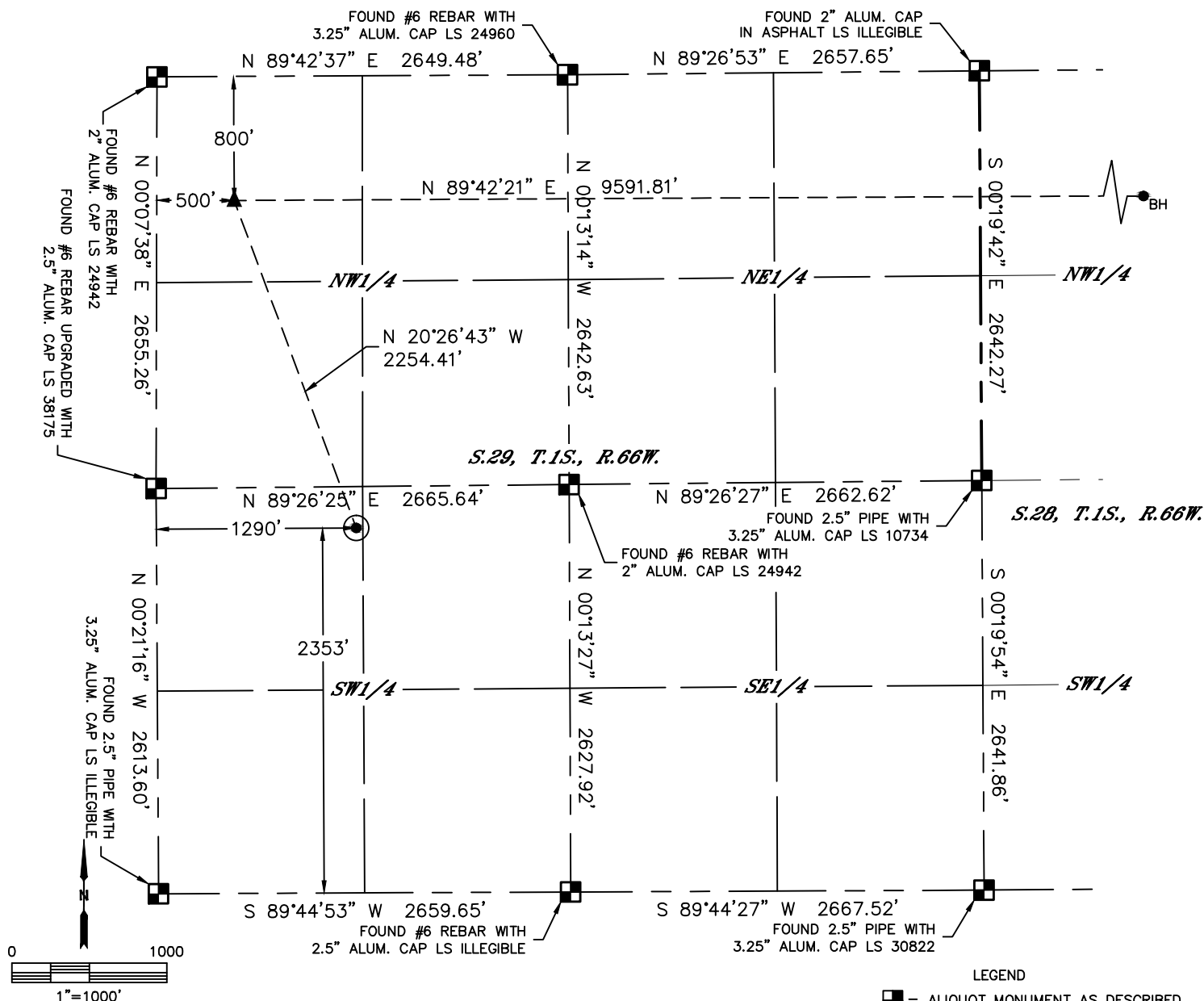


Lat40°, Inc. 6250 W. 10th Street, Unit 2, Greeley, CO 970-515-5294

# WELL LOCATION CERTIFICATE

PC NORTH 1S-66-2928-3NH

SECTION: 29  
TOWNSHIP: 1S  
RANGE: 66W  
6TH. P.M.  
ADAMS COUNTY, CO



CLIENT: HRM RESOURCES II LLC						LANDMAN: DAN KELLY			
INSTRUMENT OPERATOR: BRIAN ROTTINGHAUS						SURVEY DATE: 1/10/2017		SURFACE USE: CROP LAND	
SHL FOOTAGE				SHL LAT °	SHL LONG °	SHL PDOP	SHL ELEV (FT.)	SHL 1/4/1/4	SHL S-T-R
2353	FSL	1290	FWL	39.93533	-104.80432	1.4	5062	NWSW	29-1S-66

BHL FOOTAGE				BHL LAT °	BHL LONG °	BHL S-T-R	EP LAT °	EP LONG °	EP S-T-R
830	FNL	500	FEL	39.94107	-104.77287	28-1S-66	39.94114	-104.80707	29-1S-66

**NOTE:**

1) Bearings shown are Grid Bearings of the Colorado State Plane Coordinate System, North Zone, North American Datum 1983. The lineal dimensions as contained herein are based upon the "U.S. Survey Foot."

2) Distances to section lines measured at 90 degrees from said section lines.




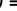

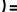

3) Ground elevations are based on an observed GPS elevation (NAVD 1988 DATUM).

4) Latitude and Longitude shown are (NAD 83 DATUM).

5) IMPROVEMENTS: See LOCATION DRAWING for all visible improvements within 500' of oil and gas location.

6) This map does not represent a boundary survey.

NEAREST CULTURAL ITEMS	
BUILDING	±1347' W
BUILDING UNIT	±1437' W
HIGH OCCUPANCY BUILDING UNIT	5280'+
DESIGNATED OUTSIDE ACTIVITY AREA	5280'+
PUBLIC ROAD (EAST 132ND AVENUE)	±255' N
ABOVE GROUND UTILITY	±293' N
RAILROAD	±2869' SE
PROPERTY LINE	±237' N

- LEGEND**
- |   |                                 |
|---|---------------------------------|
|  | = ALIQUOT MONUMENT AS DESCRIBED |
|  | = CALCULATED POSITION           |
|  | = SURFACE HOLE LOCATION (SHL)   |
|  | = ENTRY POINT LOCATION (EP)     |
|  | = BOTTOM HOLE LOCATION (BHL)    |
|  | = EXISTING WELL                 |
|  | = ABANDONED WELL                |



*SHEET 1 OF 2*

Brian T. Brinkman—On behalf of Lot49, Inc.  
Colorado Licensed Professional Land Surveyor No. 38175  
DATE: 1/23/2017  
PROJECT#: 2016052

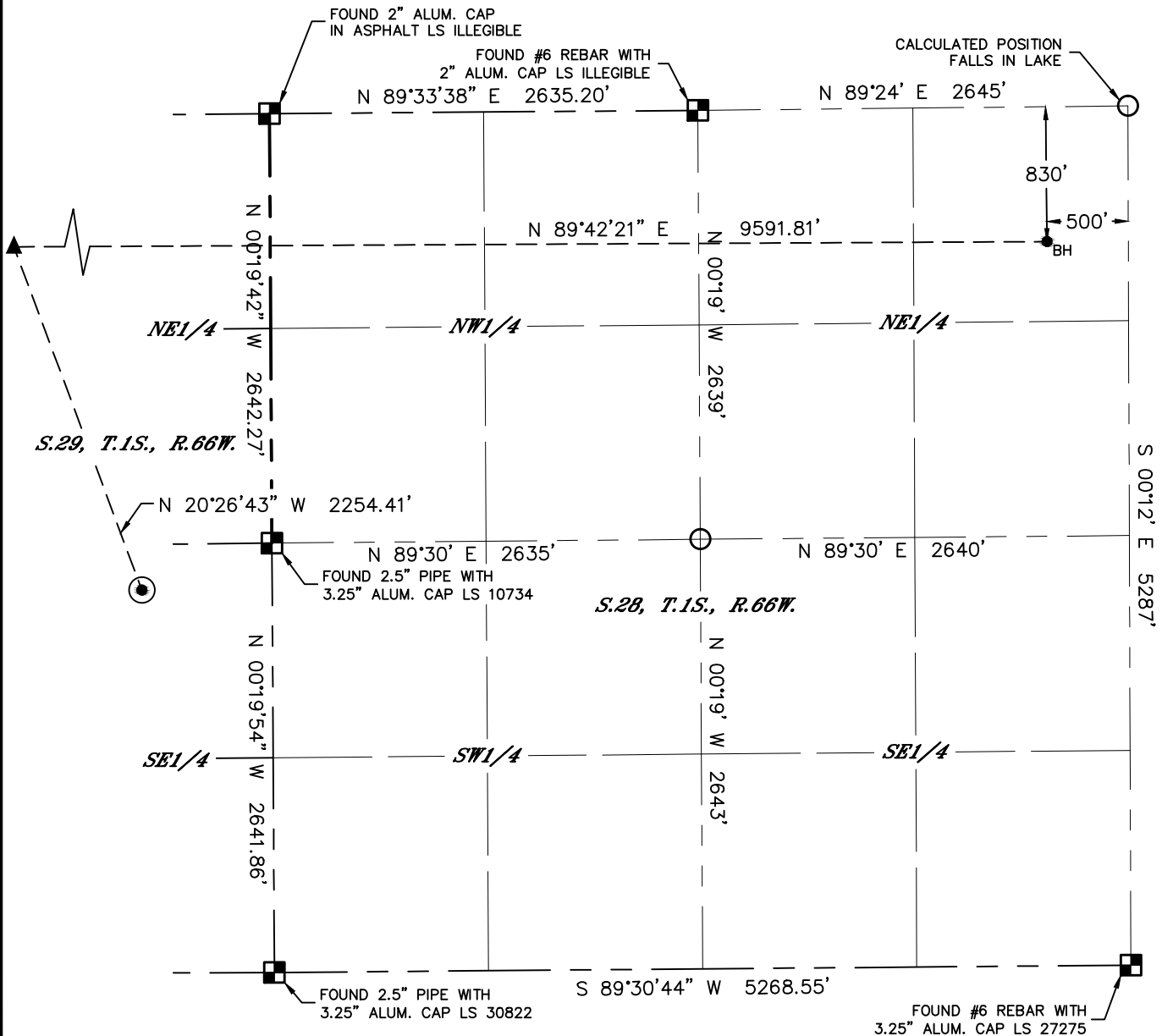


Lat40°, Inc. 6250 W. 10th Street, Unit 2, Greeley, CO 970-515-5294

# WELL LOCATION CERTIFICATE

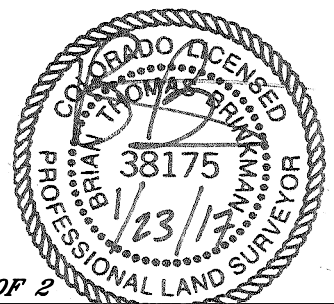
PC NORTH 1S-66-2928-3NH

SECTION: 29  
TOWNSHIP: 1S  
RANGE: 66W  
6TH. P.M.  
ADAMS COUNTY, CO



## LEGEND

- = ALIQUOT MONUMENT AS DESCRIBED
- = CALCULATED POSITION
- = SURFACE HOLE LOCATION (SHL)
- ▲ = ENTRY POINT LOCATION (EP)
- = BOTTOM HOLE LOCATION (BHL)
- ⊙ = EXISTING WELL
- ⊙ = ABANDONED WELL



**SHEET 2 OF 2**

Brian T. Brinkman—On behalf of Lat40°, Inc.  
Colorado Licensed Professional Land Surveyor No. 38175  
DATE: 1/23/2017  
PROJECT#: 2016052