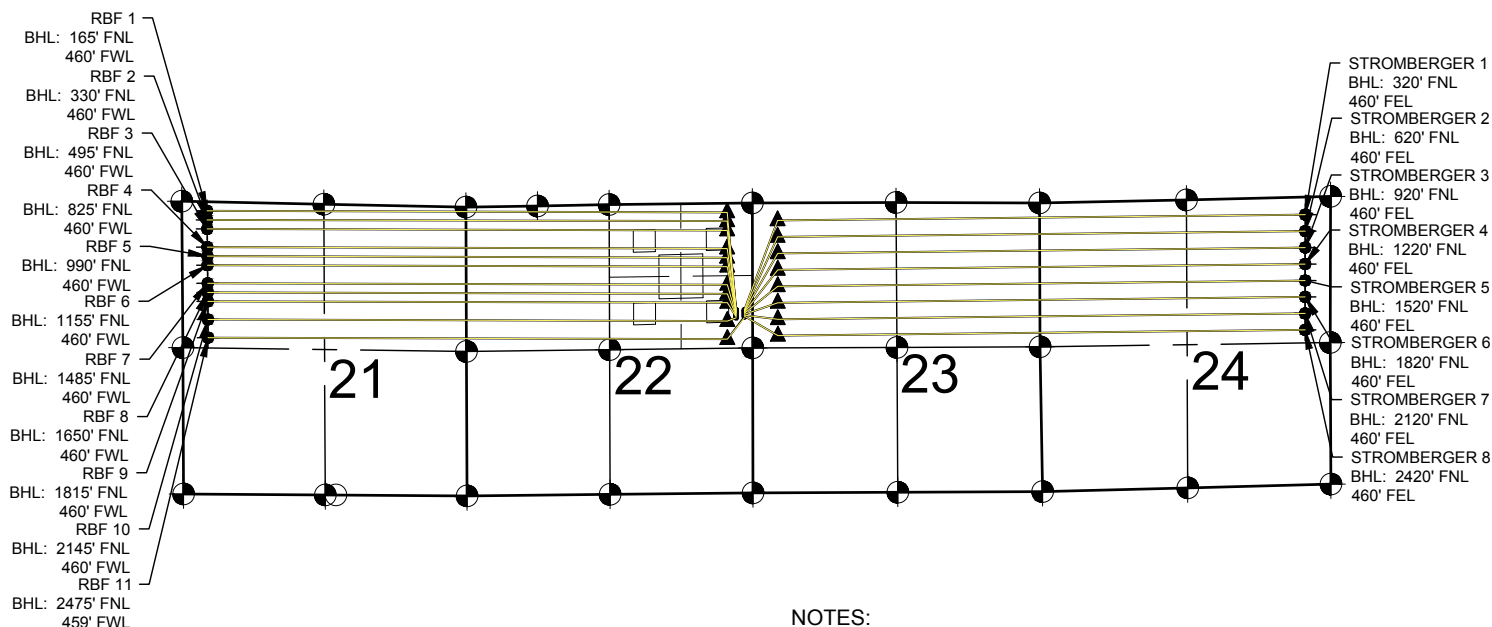


STROMBERGER 22-E PAD MULTI-WELL PLAN



NOTES:

- STROMBERGER 1 TO BE AT 1946' FNL & 150' FEL.
BOTTOM HOLE AT 320' FNL & 460' FEL, SEC. 24.
- STROMBERGER 2 TO BE AT 1962' FNL & 150' FEL.
BOTTOM HOLE AT 620' FNL & 460' FEL, SEC. 24.
- STROMBERGER 3 TO BE AT 1978' FNL & 150' FEL.
BOTTOM HOLE AT 920' FNL & 460' FEL, SEC. 24.
- STROMBERGER 4 TO BE AT 1994' FNL & 150' FEL.
BOTTOM HOLE AT 1220' FNL & 460' FEL, SEC. 24.
- STROMBERGER 5 TO BE AT 2010' FNL & 150' FEL.
BOTTOM HOLE AT 1520' FNL & 460' FEL, SEC. 24.
- STROMBERGER 6 TO BE AT 2026' FNL & 150' FEL.
BOTTOM HOLE AT 1820' FNL & 460' FEL, SEC. 24.
- STROMBERGER 7 TO BE AT 2042' FNL & 150' FEL.
BOTTOM HOLE AT 2120' FNL & 460' FEL, SEC. 24.
- STROMBERGER 8 TO BE AT 2058' FNL & 150' FEL.
BOTTOM HOLE AT 2420' FNL & 460' FEL, SEC. 24.
- RBF 1 TO BE AT 1945' FNL & 300' FEL.
BOTTOM HOLE AT 165' FNL & 460' FWL, SEC. 21.
- RBF 2 TO BE AT 1961' FNL & 300' FEL.
BOTTOM HOLE AT 330' FNL & 460' FWL, SEC. 21.
- RBF 3 TO BE AT 1977' FNL & 300' FEL.
BOTTOM HOLE AT 495' FNL & 460' FWL, SEC. 21.
- RBF 4 TO BE AT 1993' FNL & 300' FEL.
BOTTOM HOLE AT 825' FNL & 460' FWL, SEC. 21.
- RBF 5 TO BE AT 2009' FNL & 300' FEL.
BOTTOM HOLE AT 990' FNL & 460' FWL, SEC. 21.
- RBF 6 TO BE AT 2025' FNL & 300' FEL.
BOTTOM HOLE AT 1155' FNL & 460' FWL, SEC. 21.
- RBF 7 TO BE AT 2041' FNL & 300' FEL.
BOTTOM HOLE AT 1485' FNL & 460' FWL, SEC. 21.
- RBF 8 TO BE AT 2057' FNL & 300' FEL.
BOTTOM HOLE AT 1650' FNL & 460' FWL, SEC. 21.
- RBF 9 TO BE AT 2073' FNL & 300' FEL.
BOTTOM HOLE AT 1815' FNL & 460' FWL, SEC. 21.
- RBF 10 TO BE AT 2089' FNL & 300' FEL.
BOTTOM HOLE AT 2145' FNL & 460' FWL, SEC. 21.
- RBF 11 TO BE AT 2090' FNL & 150' FEL.
BOTTOM HOLE AT 2475' FNL & 460' FWL, SEC. 21.

LEGEND

- = EXISTING MONUMENT ◆ = BOTTOM HOLE
○ = CALCULATED POSITION ▲ = LANDING POINT
● = PROPOSED WELL LP = LANDING POINT
◆ = EXISTING WELL BHL = BOTTOM HOLE LOCATION

NOTES:

- THIS FIELD SURVEY CONFORMS TO THE MINIMUM STANDARDS SET BY THE C.O.G.C.C., RULE NO. 215
- BEARINGS AND DISTANCE SHOWN HEREON ARE GRID AND BASED ON THE COLORADO STATE PLANE COORDINATE SYSTEM, NAD 83/2011 BETWEEN MONUMENTS AS LABELED HEREON AND ELEVATIONS SHOWN ARE NAVD 88, AS DERIVED BY GPS OBSERVATIONS.
- GRID DISTANCES ARE SHOWN, AS MEASURED IN THE FIELD, WITH TIES TO WELLS MEASURED PERPENDICULAR TO SECTION LINES.

PREPARED BY:



FIELD DATE:
06-24-15

DRAWING DATE:
10-19-16

BY:
MLP

CHECKED BY:
JLG

SITE NAME:

STROMBERGER 22-E PAD

SURFACE LOCATION:

SE 1/4 NE 1/4 SEC. 22 T6N, R67W, 6TH P.M.

WELD COUNTY, COLORADO

PREPARED FOR:

