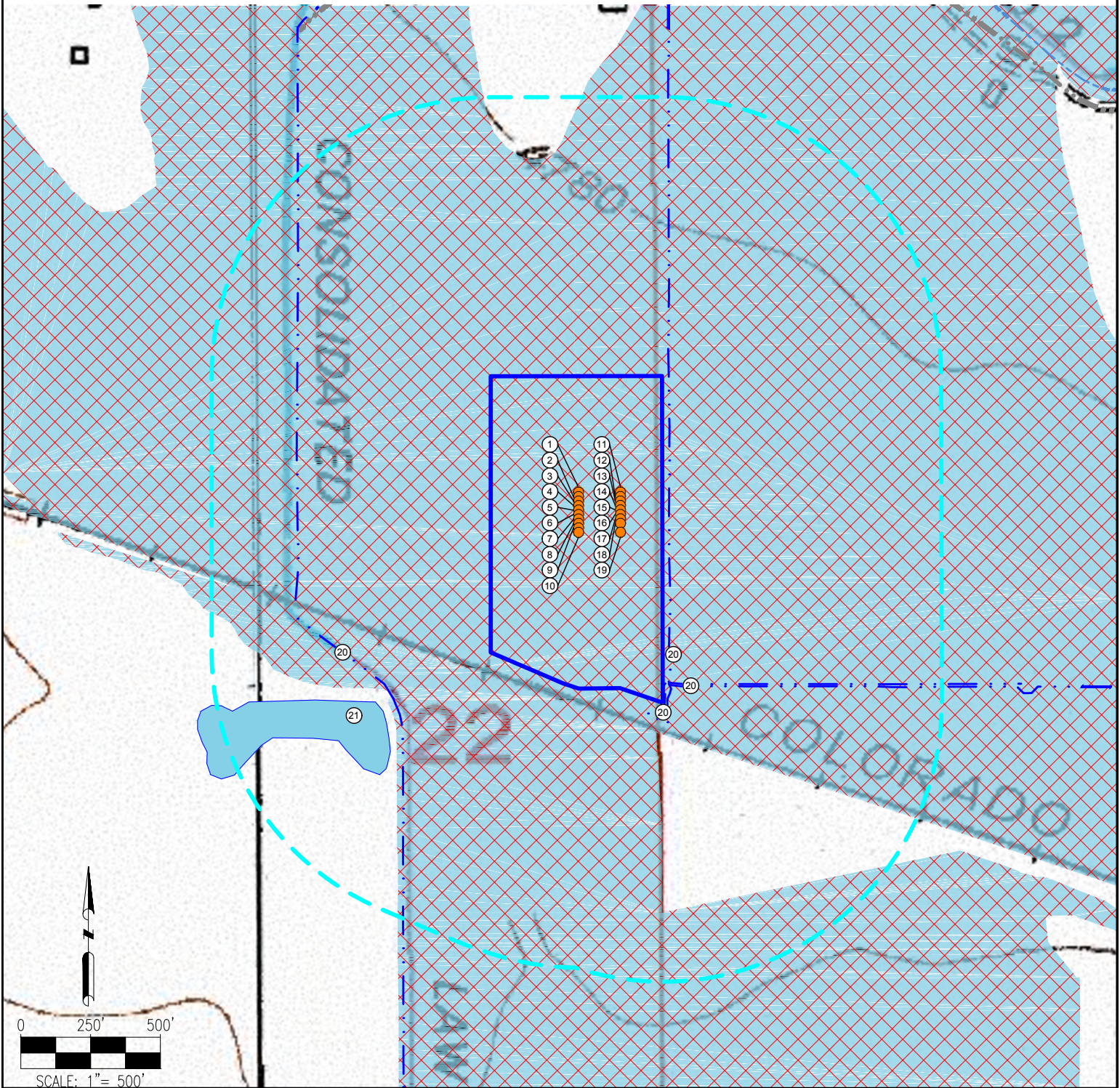


# STROMBERGER 22-E PAD HYDROLOGY MAP



MEASUREMENTS ARE MADE FROM THE NEAREST EDGE OF THE DISTURBANCE AREA.

- |          |                   |                   |                                  |
|----------|-------------------|-------------------|----------------------------------|
| 1. RBF 1 | 7. RBF 7          | 13. STROMBERGER 3 | 19. RBF 11                       |
| 2. RBF 2 | 8. RBF 8          | 14. STROMBERGER 4 | 20. DITCHES ARE ±386' SW, ±0' E, |
| 3. RBF 3 | 9. RBF 9          | 15. STROMBERGER 5 | ±7' E, ±17' E                    |
| 4. RBF 4 | 10. RBF 10        | 16. STROMBERGER 6 | 21. POND IS ±439' SW             |
| 5. RBF 5 | 11. STROMBERGER 1 | 17. STROMBERGER 7 |                                  |
| 6. RBF 6 | 12. STROMBERGER 2 | 18. STROMBERGER 8 |                                  |

<b>LEGEND:</b> 	<b>DISCLAIMER:</b> THIS PLOT DOES NOT REPRESENT A MONUMENTED LAND SURVEY AND SHOULD NOT BE RELIED UPON TO DETERMINE BOUNDARY LINES, PROPERTY OWNERSHIP OR OTHER PROPERTY INTERESTS. PARCEL LINES, IF DEPICTED HAVE NOT BEEN FIELD VERIFIED AND MAY BE BASED UPON PUBLICLY AVAILABLE DATA THAT ALSO HAS NOT BEEN INDEPENDENTLY VERIFIED.	<b>DATA SOURCE:</b> TOPO MAP: USGS NHD: USGS PUBLICLY AVAILABLE DATA SOURCES HAVE NOT BEEN INDEPENDENTLY VERIFIED BY PFS.
--------------------	--	--

PREPARED BY: 	FIELD DATE: <b>06-24-15</b> DRAWING DATE: <b>01-13-17</b> BY: <b>KWH</b> CHECKED BY: <b>JLG</b>	SITE NAME: <b>STROMBERGER 22-E PAD</b> SURFACE LOCATION: <b>SE 1/4 NE 1/4 SEC. 22, T6N, R67W, 6TH P.M.</b> <b>WELD COUNTY, COLORADO</b>	PREPARED FOR: 
------------------	--	---	-------------------