

# **LEGEND:**

 **PROPOSED LOCATION**



## **BILL BARRETT CORPORATION**

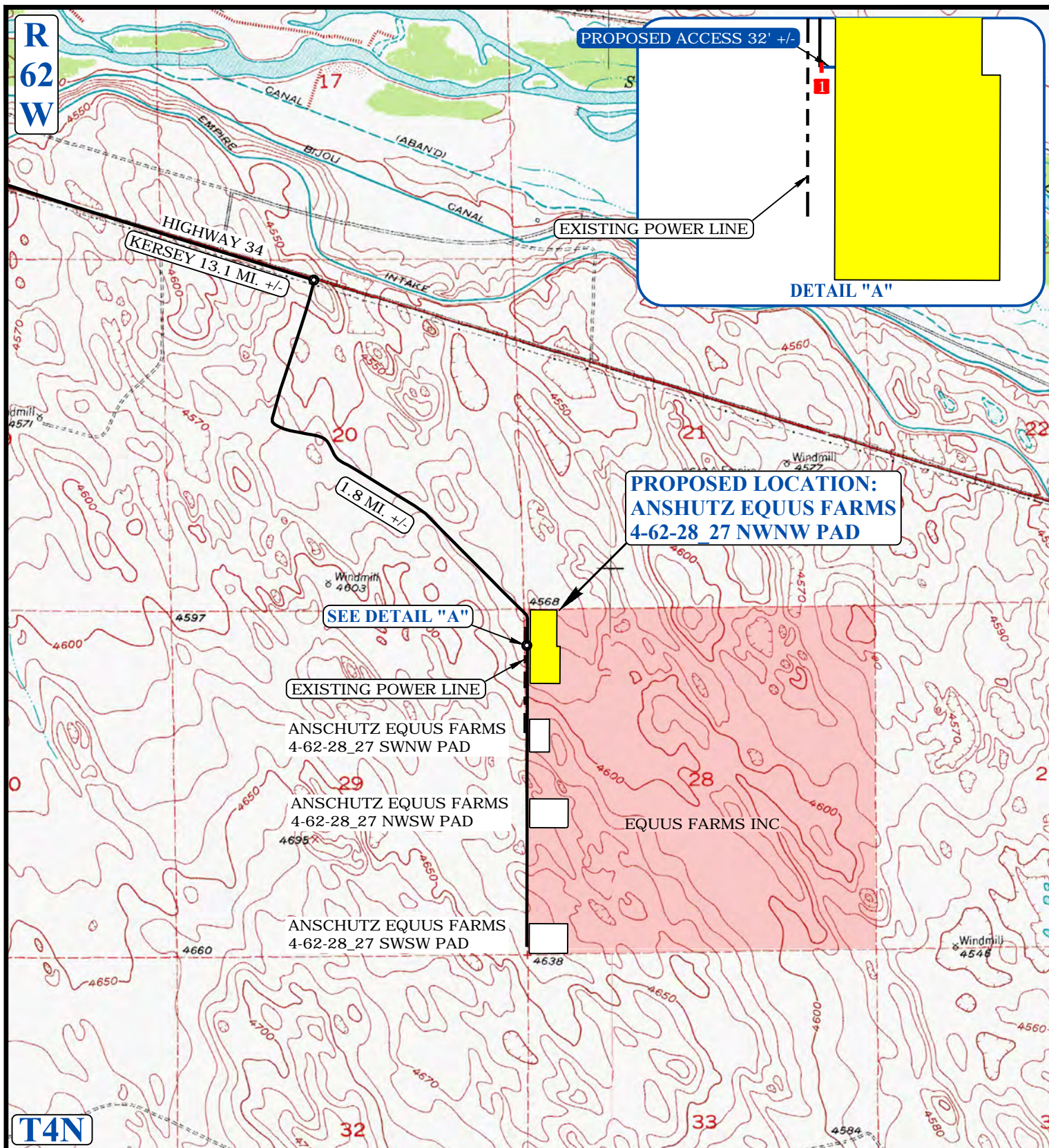
**ANSCHUTZ EQUUS FARMS 4-62-28 27 NWNW PAD**  
**NW 1/4 NW 1/4, SECTION 28, T4N, R62W, 6th P.M.**  
**WELD COUNTY, COLORADO**



**UELS, LLC**  
 Corporate Office \* 85 South 200 East  
 Vernal, UT 84078 \* (435) 789-1017

SURVEYED BY	C.M., N.P.	01-18-17	SCALE
DRAWN BY	J.A.S.	01-25-17	1" = 100.000'
<b>ACCESS ROAD MAP</b>			<b>TOPO A</b>





NO FIELD DATA SHOWN HAS BEEN OBTAINED FROM VARIOUS SOURCES AND SHOULD BE USED FOR MAKING GRADES AND PLANNING PURPOSES ONLY. NO ARRANGEMENT IS MADE BY UINCO ENGINEERING AND LAND SURVEYING FOR THE ACCURACY OF THE FIELD DATA.

**LEGEND:**

- EXISTING ROAD
- PROPOSED ROAD
- EXISTING POWER LINE
- INSTALL 18" CULVERT

**BILL BARRETT CORPORATION**

**ANSCHUTZ EQUUS FARMS 4-62-28 27 NWNW PAD**  
NW 1/4 NW 1/4, SECTION 28, T4N, R62W, 6th P.M.  
WELD COUNTY, COLORADO

SURVEYED BY	C.M., N.P.	01-18-17	SCALE
DRAWN BY	J.A.S.	01-25-17	1" = 200'

**ACCESS ROAD MAP** **TOPO B**

**UINCO, LLC**  
Corporate Office \* 85 South 200 East  
Vernal, UT 84078 \* (435) 789-1017