

LEGEND:

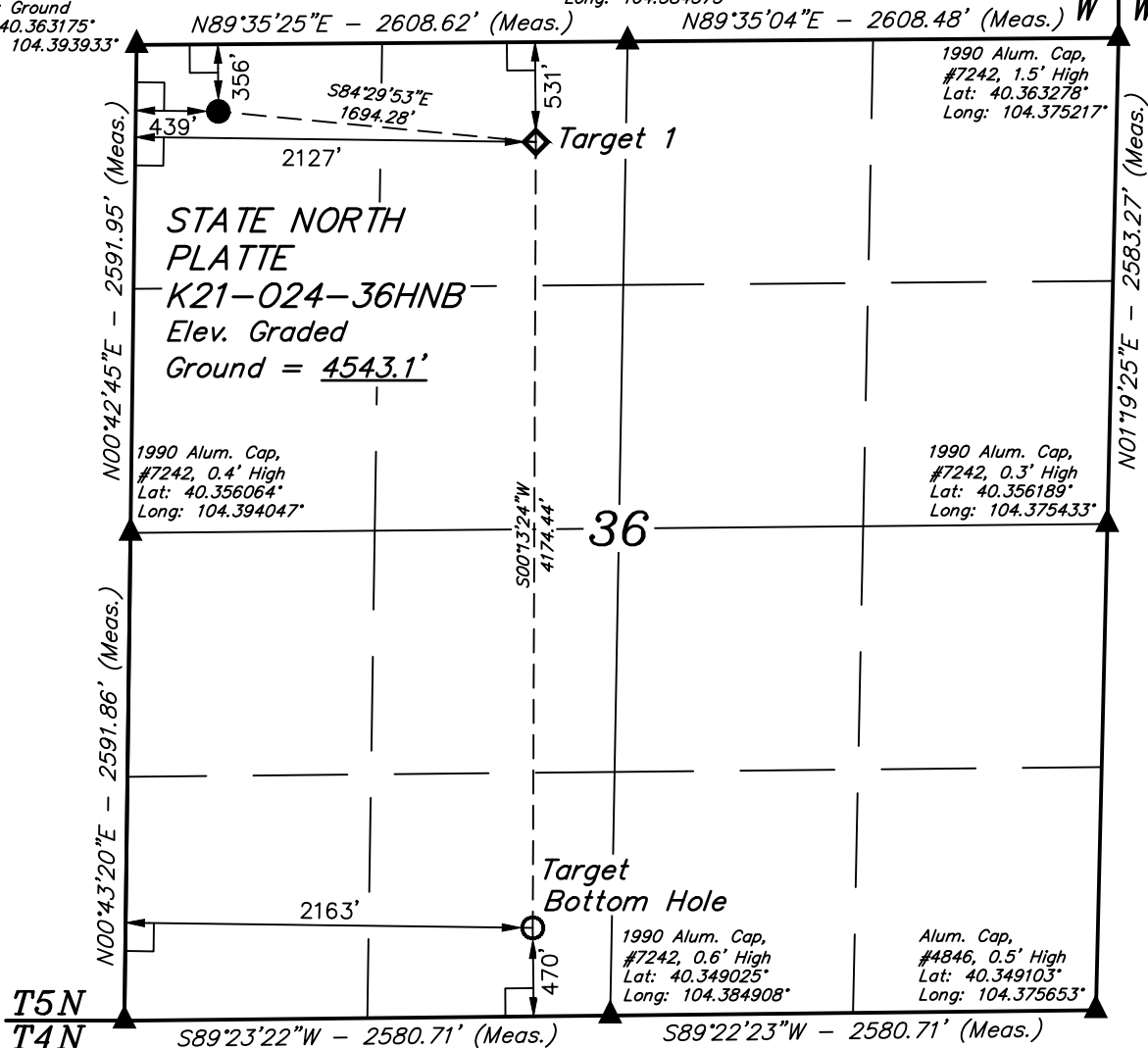
- └─ = 90° SYMBOL
- = PROPOSED WELLHEAD.
- = TARGET BOTTOM HOLE.
- ◇ = TARGET 1.
- ▲ = SECTION CORNERS LOCATED. (NAD 83)

T5N, R63W, 6th P.M.

2012 Alum. Cap,
#38175, 0.9'
Below Ground
Lat: 40.363175°
Long: 104.393933°

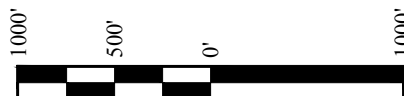
2016 Alum. Cap,
#28285, 0.4' High
Lat: 40.363225°
Long: 104.384575°

R
63
W
R
62
W



PDOP = 1.5

NAD 83 (SURFACE LOCATION)	
LATITUDE = 40°21'43.94" (40.362206)	
LONGITUDE = 104°23'32.55" (104.392375)	
NAD 83 (TARGET 1)	
LATITUDE = 40°21'42.33" (40.361758)	
LONGITUDE = 104°23'10.77" (104.386325)	
NAD 83 (TARGET BOTTOM HOLE)	
LATITUDE = 40°21'01.09" (40.350303)	
LONGITUDE = 104°23'10.98" (104.386383)	



CERTIFICATE

THIS IS TO CERTIFY THAT THE ABOVE PLAT WAS PREPARED FROM FIELD NOTES OF ACTUAL SURVEYS MADE BY ME OR UNDER MY SUPERVISION, AND THAT THE SAME ARE TRUE AND CORRECT TO THE BEST OF MY KNOWLEDGE AND BELIEF.

REGISTERED LAND SURVEYOR
REGISTRATION NO. 28285
STATE OF COLORADO

8/11/17

REV: 2 01-11-17 D.COX (TBH COORDINATE CORRECTION)

BASIS OF BEARINGS
BASIS OF BEARINGS IS A G.P.S. OBSERVATION

BASIS OF ELEVATION

USGS COOPERATIVE BASE NETWORK CONTROL STATION,
DESIGNATION 'M414'. NGS DATA SHEET LISTS THE
NAVD 88 ELEVATION AS BEING 4600.58 FEET



UELS, LLC
Corporate Office * 85 South 200 East
Vernal, UT 84078 * (435) 789-1017



**BONANZA CREEK ENERGY
OPERATING COMPANY, LLC**

**STATE NORTH PLATTE K21-024-36HNB
NW 1/4 NW 1/4, SECTION 36, T5N, R63W, 6th P.M.
WELD COUNTY, COLORADO**

SURVEYED BY	DALLAS NIELSEN, C.M.	10-20-16	SCALE
DRAWN BY	D.COX	10-21-16	1" = 1000'

WELL LOCATION PLAT