

BONANZA CREEK ENERGY INC.

**WELD COUNTY, COLORADO (NAD 83)
NW NW SEC. 36 T5N R63W 6th P.M.
STATE NORTH PLATTE F11-J14-36HNC**

ORIGINAL WELLBORE

11 January, 2017

Plan: PROPOSAL #2





Project: WELD COUNTY, COLORADO (NAD 83)
Site: NW NW SEC. 36 T5N R63W 6th P.M.
Well: STATE NORTH PLATTE F11-J14-36HNC
Wellbore: ORIGINAL WELLBORE
Design: PROPOSAL #2

ANNOTATIONS

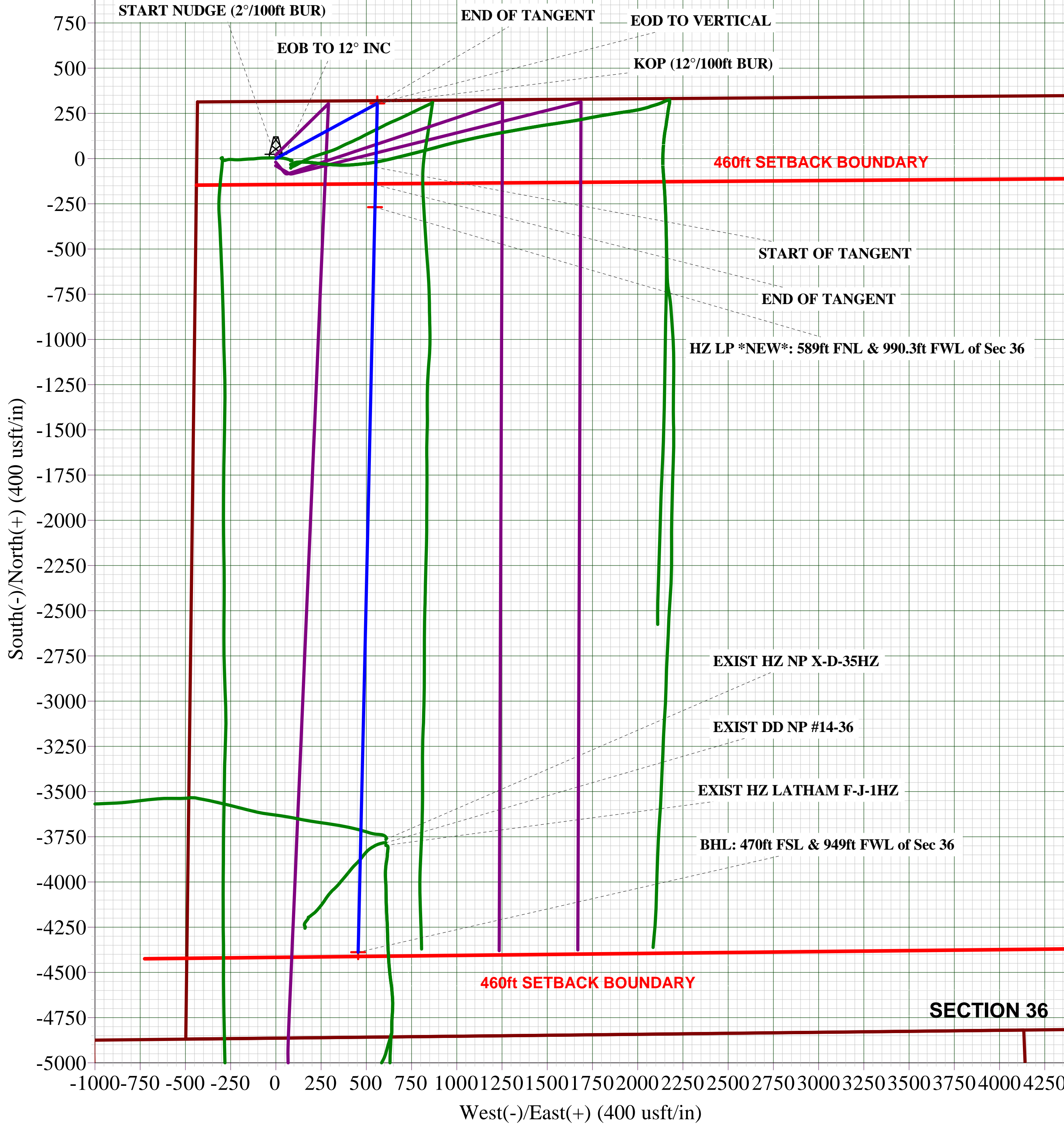
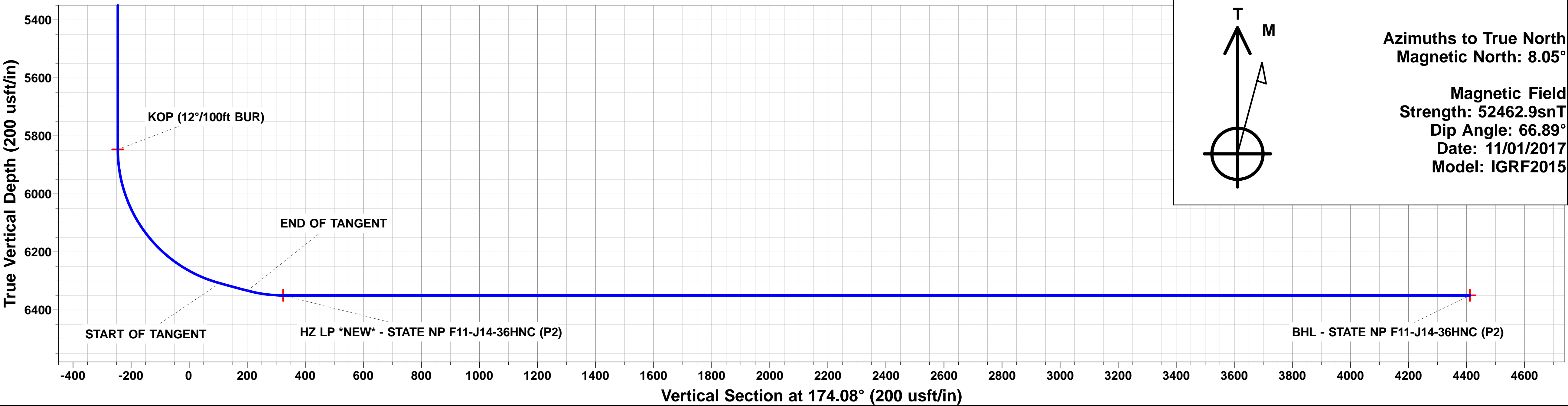
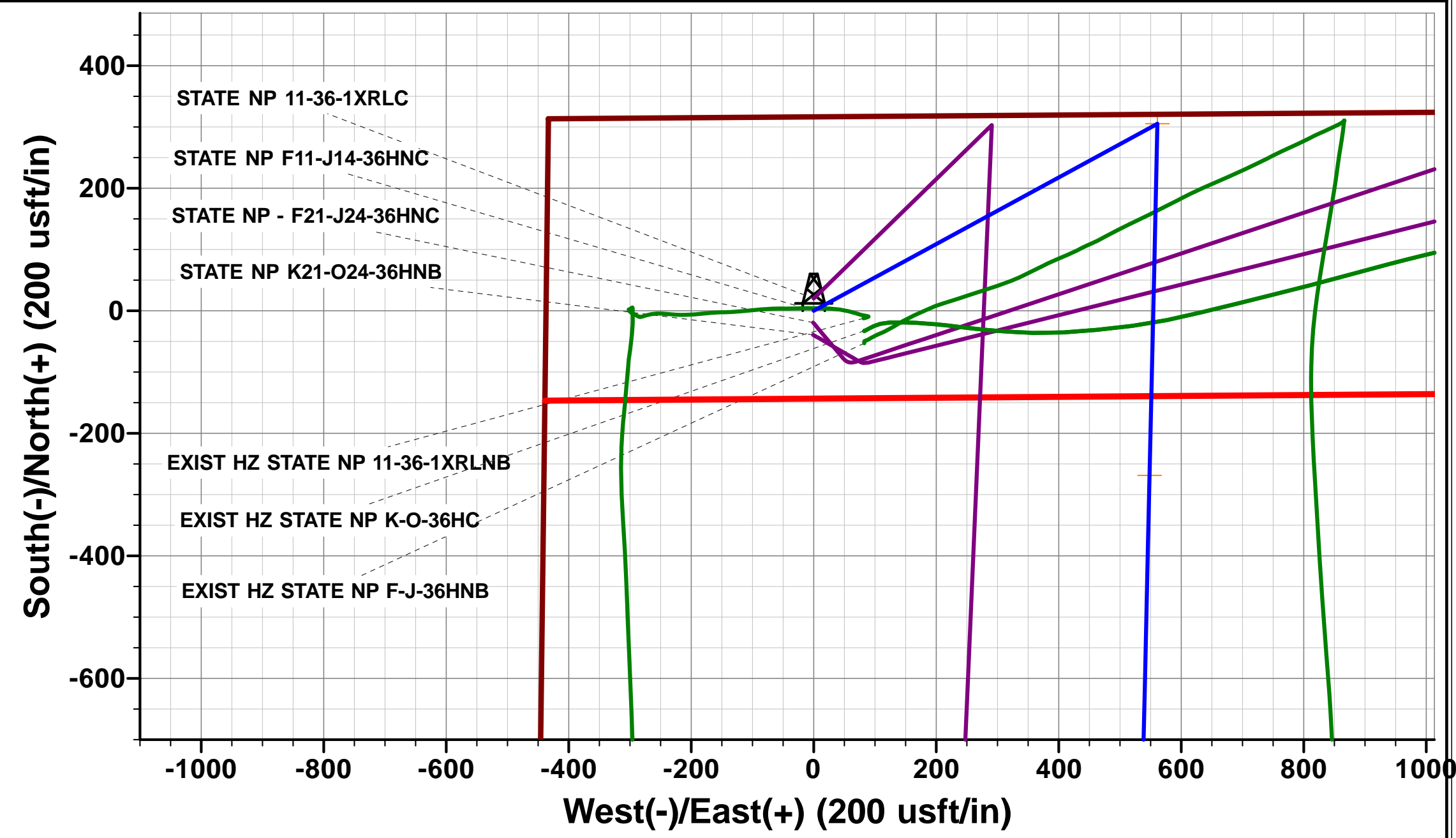
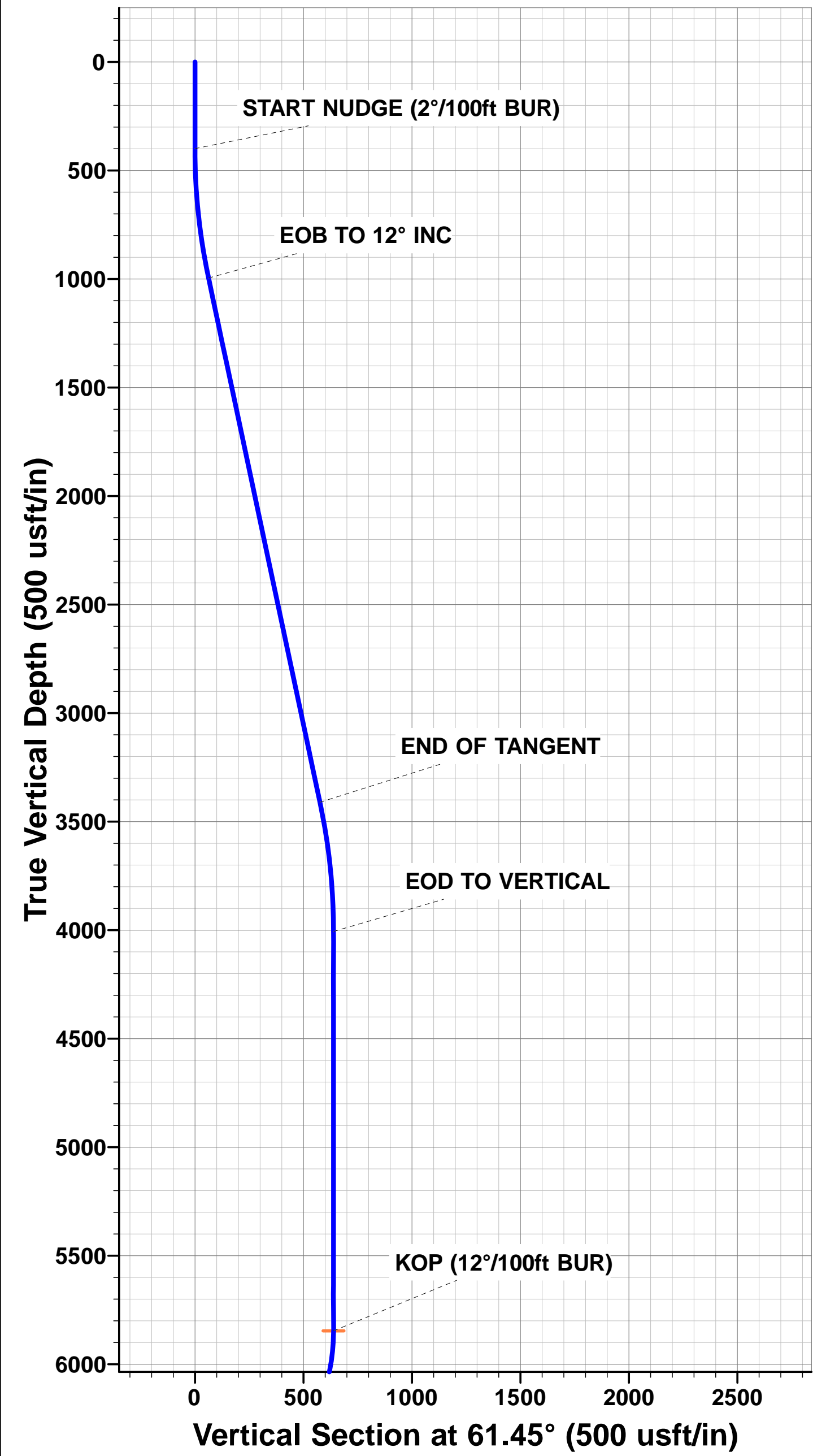
TVD	MD	Inc	Azi	+N/-S	+E/-W	Vsect	Dep	Annotation
0.0	0.0	0.00	0.00	0.0	0.0	0.0	0.0	SHL: 317ft FNL & 439ft FWL of Sec 36
400.0	400.0	0.00	0.00	0.0	0.0	0.0	0.0	START NUDGE (2°/100ft BUR)
995.8	1000.2	12.00	61.45	29.9	55.0	-24.1	62.6	EOB TO 12° INC
3411.0	3469.4	12.00	61.45	275.4	506.2	-221.7	576.2	END OF TANGENT
4006.9	4069.7	0.00	0.00	305.3	561.2	-245.8	638.9	EOD TO VERTICAL
5846.9	5909.7	0.00	0.00	305.3	561.2	-245.8	638.9	KOP (12°/100ft BUR)
6308.1	6534.7	75.00	181.29	-48.5	553.2	105.4	992.8	START OF TANGENT
6334.0	6634.7	75.00	181.29	-145.1	551.1	201.2	1089.4	END OF TANGENT
6350.2	6759.7	90.00	181.29	-268.6	548.3	323.8	1213.0	HZ LP *NEW*: 589ft FNL & 990.3ft FWL of Sec 36
6350.2	10880.2	90.00	181.30	-4388.1	455.2	4411.6	5333.5	BHL: 470ft FSL & 949ft FWL of Sec 36

LOCAL COORDINATES:

SHL: 317ft FNL & 439ft FWL Sec 36
HZ LP *NEW*: ft 589ft FNL & 990.3ft FWL Sec 36
BHL: 470ft FSL & 949ft FWL Sec 36

WELLBORE TARGET DETAILS (LAT/LONG)

Name	TVD	+N/-S	+E/-W	Latitude	Longitude
KOP - STATE NP F11-J14-36HNC (P2)	5846.9	305.3	561.2	40.363152	-104.390358
BHL - STATE NP F11-J14-36HNC (P2)	6350.2	-4388.1	455.2	40.350269	-104.390739
HZ LP *NEW* - STATE NP F11-J14-36HNC (P2)	6350.2	-268.6	548.3	40.361577	-104.390405



Database:	EDM 5000.1 Single User Db	Local Co-ordinate Reference:	Well STATE NORTH PLATTE F11-J14-36HNC
Company:	BONANZA CREEK ENERGY INC.	TVD Reference:	KB-EST @ 4560.2usft
Project:	WELD COUNTY, COLORADO (NAD 83)	MD Reference:	KB-EST @ 4560.2usft
Site:	NW NW SEC. 36 T5N R63W 6th P.M.	North Reference:	True
Well:	STATE NORTH PLATTE F11-J14-36HNC	Survey Calculation Method:	Minimum Curvature
Wellbore:	ORIGINAL WELLBORE		
Design:	PROPOSAL #2		

Project	WELD COUNTY, COLORADO (NAD 83)		
Map System:	US State Plane 1983	System Datum:	Mean Sea Level
Geo Datum:	North American Datum 1983		
Map Zone:	Colorado Northern Zone		Using geodetic scale factor

Site	NW NW SEC. 36 T5N R63W 6th P.M.		
Site Position:		Northing:	1,376,747.52 usft
From:	Lat/Long	Easting:	3,308,732.52 usft
Position Uncertainty:	0.0 usft	Slot Radius:	1.10000ft
		Latitude:	40.362279
		Longitude:	-104.392074
		Grid Convergence:	0.72 °

Well	STATE NORTH PLATTE F11-J14-36HNC		
Well Position	+N/-S	12.7 usft	Northing:
	+E/-W	-83.0 usft	Easting:
Position Uncertainty		0.0 usft	Wellhead Elevation:
			Latitude:
			Longitude:
			Ground Level:

Wellbore	ORIGINAL WELLBORE				
Magnetics	Model Name	Sample Date	Declination (°)	Dip Angle (°)	Field Strength (nT)
	IGRF2015	11/01/2017	8.05	66.89	52,463

Design	PROPOSAL #2			
Audit Notes:				
Version:	Phase:	PROTOTYPE	Tie On Depth:	0.0
Vertical Section:	Depth From (TVD) (usft)	+N/-S (usft)	+E/-W (usft)	Direction (°)
	0.0	0.0	0.0	174.08

Plan Sections											
MD (usft)	Inc (°)	Azi (°)	Vertical Depth	SS (usft)	+N/-S (usft)	+E/-W (usft)	Dogleg Rate (°/100usf)	Build Rate (°/100usf)	Turn Rate (°/100usf)	TFO (°)	Target
0.0	0.00	0.00	0.0	-4,560.2	0.0	0.0	0.00	0.00	0.00	0.00	
400.0	0.00	0.00	400.0	-4,160.2	0.0	0.0	0.00	0.00	0.00	0.00	
1,000.2	12.00	61.45	995.8	-3,564.4	29.9	55.0	2.00	2.00	0.00	61.45	
3,469.4	12.00	61.45	3,411.1	-1,149.1	275.4	506.2	0.00	0.00	0.00	0.00	
4,069.7	0.00	0.00	4,006.9	-553.3	305.3	561.2	2.00	-2.00	0.00	180.00	
5,909.7	0.00	0.00	5,846.9	1,286.7	305.3	561.2	0.00	0.00	0.00	0.00	KOP - STATE NP F
6,534.7	75.00	181.29	6,308.1	1,747.9	-48.5	553.2	12.00	12.00	0.00	181.29	
6,634.7	75.00	181.29	6,334.0	1,773.8	-145.1	551.1	0.00	0.00	0.00	0.00	
6,759.7	90.00	181.29	6,350.2	1,790.0	-268.6	548.3	12.00	12.00	0.00	0.00	
10,880.2	90.00	181.30	6,350.2	1,790.0	-4,388.1	455.2	0.00	0.00	0.00	82.43	BHL - STATE NP F

Database:	EDM 5000.1 Single User Db	Local Co-ordinate Reference:	Well STATE NORTH PLATTE F11-J14-36HNC
Company:	BONANZA CREEK ENERGY INC.	TVD Reference:	KB-EST @ 4560.2usft
Project:	WELD COUNTY, COLORADO (NAD 83)	MD Reference:	KB-EST @ 4560.2usft
Site:	NW NW SEC. 36 T5N R63W 6th P.M.	North Reference:	True
Well:	STATE NORTH PLATTE F11-J14-36HNC	Survey Calculation Method:	Minimum Curvature
Wellbore:	ORIGINAL WELLBORE		
Design:	PROPOSAL #2		

Planned Survey

MD (usft)	Inc (°)	Azi (°)	TVD (usft)	SS (usft)	+N-S (usft)	+E-W (usft)	Vertical Section (usft)	Dogleg Rate (°/100usft)	Build Rate (°/100usft)	Turn Rate (°/100usft)
SHL: 317ft FNL & 439ft FWL of Sec 36										
0.0	0.00	0.00	0.0	4,560.20	0.0	0.0	0.0	0.00	0.00	0.00
100.0	0.00	0.00	100.0	4,460.20	0.0	0.0	0.0	0.00	0.00	0.00
200.0	0.00	0.00	200.0	4,360.20	0.0	0.0	0.0	0.00	0.00	0.00
300.0	0.00	0.00	300.0	4,260.20	0.0	0.0	0.0	0.00	0.00	0.00
START NUDGE (2°/100ft BUR)										
400.0	0.00	0.00	400.0	4,160.20	0.0	0.0	0.0	0.00	0.00	0.00
500.0	2.00	61.45	500.0	4,060.22	0.8	1.5	-0.7	2.00	2.00	0.00
600.0	4.00	61.45	599.8	3,960.36	3.3	6.1	-2.7	2.00	2.00	0.00
700.0	6.00	61.45	699.5	3,860.75	7.5	13.8	-6.0	2.00	2.00	0.00
800.0	8.00	61.45	798.7	3,761.50	13.3	24.5	-10.7	2.00	2.00	0.00
900.0	10.00	61.45	897.5	3,662.73	20.8	38.2	-16.7	2.00	2.00	0.00
1,000.0	12.00	61.45	995.6	3,564.58	29.9	55.0	-24.1	2.00	2.00	0.00
EOB TO 12° INC										
1,000.2	12.00	61.45	995.8	3,564.38	29.9	55.0	-24.1	2.00	2.00	0.00
1,100.0	12.00	61.45	1,093.4	3,466.76	39.9	73.3	-32.1	0.00	0.00	0.00
1,200.0	12.00	61.45	1,191.2	3,368.95	49.8	91.5	-40.1	0.00	0.00	0.00
1,300.0	12.00	61.45	1,289.1	3,271.14	59.7	109.8	-48.1	0.00	0.00	0.00
1,400.0	12.00	61.45	1,386.9	3,173.32	69.7	128.1	-56.1	0.00	0.00	0.00
1,500.0	12.00	61.45	1,484.7	3,075.51	79.6	146.3	-64.1	0.00	0.00	0.00
1,600.0	12.00	61.45	1,582.5	2,977.70	89.6	164.6	-72.1	0.00	0.00	0.00
1,700.0	12.00	61.45	1,680.3	2,879.89	99.5	182.9	-80.1	0.00	0.00	0.00
1,800.0	12.00	61.45	1,778.1	2,782.07	109.4	201.2	-88.1	0.00	0.00	0.00
1,900.0	12.00	61.45	1,875.9	2,684.26	119.4	219.4	-96.1	0.00	0.00	0.00
2,000.0	12.00	61.45	1,973.8	2,586.45	129.3	237.7	-104.1	0.00	0.00	0.00
2,100.0	12.00	61.45	2,071.6	2,488.63	139.2	256.0	-112.1	0.00	0.00	0.00
2,200.0	12.00	61.45	2,169.4	2,390.82	149.2	274.2	-120.1	0.00	0.00	0.00
2,300.0	12.00	61.45	2,267.2	2,293.01	159.1	292.5	-128.1	0.00	0.00	0.00
2,400.0	12.00	61.45	2,365.0	2,195.19	169.1	310.8	-136.1	0.00	0.00	0.00
2,500.0	12.00	61.45	2,462.8	2,097.38	179.0	329.0	-144.1	0.00	0.00	0.00
2,600.0	12.00	61.45	2,560.6	1,999.57	188.9	347.3	-152.1	0.00	0.00	0.00
2,700.0	12.00	61.45	2,658.4	1,901.75	198.9	365.6	-160.1	0.00	0.00	0.00
2,800.0	12.00	61.45	2,756.3	1,803.94	208.8	383.9	-168.1	0.00	0.00	0.00
2,900.0	12.00	61.45	2,854.1	1,706.13	218.8	402.1	-176.1	0.00	0.00	0.00
3,000.0	12.00	61.45	2,951.9	1,608.31	228.7	420.4	-184.1	0.00	0.00	0.00
3,100.0	12.00	61.45	3,049.7	1,510.50	238.6	438.7	-192.1	0.00	0.00	0.00
3,200.0	12.00	61.45	3,147.5	1,412.69	248.6	456.9	-200.1	0.00	0.00	0.00
3,300.0	12.00	61.45	3,245.3	1,314.88	258.5	475.2	-208.1	0.00	0.00	0.00
3,400.0	12.00	61.45	3,343.1	1,217.06	268.5	493.5	-216.1	0.00	0.00	0.00
END OF TANGENT										
3,469.4	12.00	61.45	3,411.0	1,149.18	275.4	506.2	-221.7	0.00	0.00	0.00
3,500.0	11.39	61.45	3,441.0	1,119.22	278.3	511.6	-224.1	2.00	-2.00	0.00
3,600.0	9.39	61.45	3,539.3	1,020.86	286.9	527.5	-231.0	2.00	-2.00	0.00
3,700.0	7.39	61.45	3,638.3	921.94	293.9	540.3	-236.6	2.00	-2.00	0.00
3,800.0	5.39	61.45	3,737.6	822.56	299.2	550.1	-240.9	2.00	-2.00	0.00
3,900.0	3.39	61.45	3,837.3	722.86	302.9	556.8	-243.8	2.00	-2.00	0.00
4,000.0	1.39	61.45	3,937.2	622.96	304.9	560.5	-245.4	2.00	-2.00	0.00
EOD TO VERTICAL										
4,069.7	0.00	0.00	4,006.9	553.26	305.3	561.2	-245.8	2.00	-2.00	0.00
4,100.0	0.00	0.00	4,037.2	522.96	305.3	561.2	-245.8	0.00	0.00	0.00
4,200.0	0.00	0.00	4,137.2	422.96	305.3	561.2	-245.8	0.00	0.00	0.00
4,300.0	0.00	0.00	4,237.2	322.96	305.3	561.2	-245.8	0.00	0.00	0.00

Database:	EDM 5000.1 Single User Db	Local Co-ordinate Reference:	Well STATE NORTH PLATTE F11-J14-36HNC
Company:	BONANZA CREEK ENERGY INC.	TVD Reference:	KB-EST @ 4560.2usft
Project:	WELD COUNTY, COLORADO (NAD 83)	MD Reference:	KB-EST @ 4560.2usft
Site:	NW NW SEC. 36 T5N R63W 6th P.M.	North Reference:	True
Well:	STATE NORTH PLATTE F11-J14-36HNC	Survey Calculation Method:	Minimum Curvature
Wellbore:	ORIGINAL WELLBORE		
Design:	PROPOSAL #2		

Planned Survey

MD (usft)	Inc (°)	Azi (°)	TVD (usft)	SS (usft)	+N/-S (usft)	+E/-W (usft)	Vertical Section (usft)	Dogleg Rate (°/100usft)	Build Rate (°/100usft)	Turn Rate (°/100usft)
4,400.0	0.00	0.00	4,337.2	222.96	305.3	561.2	-245.8	0.00	0.00	0.00
4,500.0	0.00	0.00	4,437.2	122.96	305.3	561.2	-245.8	0.00	0.00	0.00
4,600.0	0.00	0.00	4,537.2	22.96	305.3	561.2	-245.8	0.00	0.00	0.00
4,700.0	0.00	0.00	4,637.2	-77.04	305.3	561.2	-245.8	0.00	0.00	0.00
4,800.0	0.00	0.00	4,737.2	-177.04	305.3	561.2	-245.8	0.00	0.00	0.00
4,900.0	0.00	0.00	4,837.2	-277.04	305.3	561.2	-245.8	0.00	0.00	0.00
5,000.0	0.00	0.00	4,937.2	-377.04	305.3	561.2	-245.8	0.00	0.00	0.00
5,100.0	0.00	0.00	5,037.2	-477.04	305.3	561.2	-245.8	0.00	0.00	0.00
5,200.0	0.00	0.00	5,137.2	-577.04	305.3	561.2	-245.8	0.00	0.00	0.00
5,300.0	0.00	0.00	5,237.2	-677.04	305.3	561.2	-245.8	0.00	0.00	0.00
5,400.0	0.00	0.00	5,337.2	-777.04	305.3	561.2	-245.8	0.00	0.00	0.00
5,500.0	0.00	0.00	5,437.2	-877.04	305.3	561.2	-245.8	0.00	0.00	0.00
5,600.0	0.00	0.00	5,537.2	-977.04	305.3	561.2	-245.8	0.00	0.00	0.00
5,700.0	0.00	0.00	5,637.2	-1,077.04	305.3	561.2	-245.8	0.00	0.00	0.00
5,800.0	0.00	0.00	5,737.2	-1,177.04	305.3	561.2	-245.8	0.00	0.00	0.00
5,900.0	0.00	0.00	5,837.2	-1,277.04	305.3	561.2	-245.8	0.00	0.00	0.00
KOP (12°/100ft BUR)										
5,909.7	0.00	0.00	5,846.9	-1,286.74	305.3	561.2	-245.8	0.00	0.00	0.00
6,000.0	10.84	181.29	5,936.7	-1,376.50	296.8	561.0	-237.3	12.00	12.00	0.00
6,100.0	22.84	181.29	6,032.2	-1,472.04	267.9	560.4	-208.6	12.00	12.00	0.00
6,200.0	34.84	181.29	6,119.7	-1,559.47	219.7	559.3	-160.9	12.00	12.00	0.00
6,300.0	46.84	181.29	6,195.2	-1,634.99	154.5	557.8	-96.1	12.00	12.00	0.00
6,400.0	58.84	181.29	6,255.5	-1,695.28	74.9	556.0	-17.2	12.00	12.00	0.00
6,500.0	70.84	181.29	6,297.9	-1,737.72	-15.4	554.0	72.5	12.00	12.00	0.00
START OF TANGENT										
6,534.7	75.00	181.29	6,308.1	-1,747.91	-48.5	553.2	105.4	11.99	11.99	0.00
6,600.0	75.00	181.29	6,325.0	-1,764.81	-111.6	551.8	167.9	0.00	0.00	0.00
END OF TANGENT										
6,634.7	75.00	181.29	6,334.0	-1,773.79	-145.1	551.1	201.2	0.00	0.00	0.00
6,700.0	82.84	181.29	6,346.5	-1,786.32	-209.1	549.6	264.7	12.01	12.01	0.00
HZ LP *NEW*: 589ft FNL & 990.3ft FWL of Sec 36										
6,759.7	90.00	181.29	6,350.2	-1,790.05	-268.6	548.3	323.8	11.99	11.99	0.00
6,800.0	90.00	181.29	6,350.2	-1,790.05	-308.9	547.4	363.8	0.00	0.00	0.00
6,900.0	90.00	181.29	6,350.2	-1,790.05	-408.9	545.1	463.0	0.00	0.00	0.00
7,000.0	90.00	181.29	6,350.2	-1,790.05	-508.9	542.9	562.2	0.00	0.00	0.00
7,100.0	90.00	181.29	6,350.2	-1,790.05	-608.9	540.6	661.4	0.00	0.00	0.00
7,200.0	90.00	181.29	6,350.2	-1,790.05	-708.8	538.4	760.6	0.00	0.00	0.00
7,300.0	90.00	181.29	6,350.2	-1,790.05	-808.8	536.1	859.8	0.00	0.00	0.00
7,400.0	90.00	181.29	6,350.2	-1,790.05	-908.8	533.9	959.0	0.00	0.00	0.00
7,500.0	90.00	181.29	6,350.2	-1,790.05	-1,008.8	531.6	1,058.2	0.00	0.00	0.00
7,600.0	90.00	181.29	6,350.2	-1,790.04	-1,108.7	529.3	1,157.4	0.00	0.00	0.00
7,700.0	90.00	181.29	6,350.2	-1,790.04	-1,208.7	527.1	1,256.6	0.00	0.00	0.00
7,800.0	90.00	181.29	6,350.2	-1,790.04	-1,308.7	524.8	1,355.8	0.00	0.00	0.00
7,900.0	90.00	181.29	6,350.2	-1,790.04	-1,408.7	522.6	1,455.1	0.00	0.00	0.00
8,000.0	90.00	181.29	6,350.2	-1,790.04	-1,508.6	520.3	1,554.3	0.00	0.00	0.00
8,100.0	90.00	181.29	6,350.2	-1,790.04	-1,608.6	518.1	1,653.5	0.00	0.00	0.00
8,200.0	90.00	181.29	6,350.2	-1,790.04	-1,708.6	515.8	1,752.7	0.00	0.00	0.00
8,300.0	90.00	181.29	6,350.2	-1,790.04	-1,808.6	513.5	1,851.9	0.00	0.00	0.00
8,400.0	90.00	181.29	6,350.2	-1,790.04	-1,908.5	511.3	1,951.1	0.00	0.00	0.00
8,500.0	90.00	181.29	6,350.2	-1,790.04	-2,008.5	509.0	2,050.3	0.00	0.00	0.00
8,600.0	90.00	181.29	6,350.2	-1,790.04	-2,108.5	506.8	2,149.5	0.00	0.00	0.00
8,700.0	90.00	181.29	6,350.2	-1,790.04	-2,208.5	504.5	2,248.7	0.00	0.00	0.00

Database:	EDM 5000.1 Single User Db	Local Co-ordinate Reference:	Well STATE NORTH PLATTE F11-J14-36HNC
Company:	BONANZA CREEK ENERGY INC.	TVD Reference:	KB-EST @ 4560.2usft
Project:	WELD COUNTY, COLORADO (NAD 83)	MD Reference:	KB-EST @ 4560.2usft
Site:	NW NW SEC. 36 T5N R63W 6th P.M.	North Reference:	True
Well:	STATE NORTH PLATTE F11-J14-36HNC	Survey Calculation Method:	Minimum Curvature
Wellbore:	ORIGINAL WELLBORE		
Design:	PROPOSAL #2		

Planned Survey

MD (usft)	Inc (°)	Azi (°)	TVD (usft)	SS (usft)	+N/-S (usft)	+E/-W (usft)	Vertical Section (usft)	Dogleg Rate (°/100usft)	Build Rate (°/100usft)	Turn Rate (°/100usft)
8,800.0	90.00	181.29	6,350.2	-1,790.04	-2,308.4	502.3	2,347.9	0.00	0.00	0.00
8,900.0	90.00	181.30	6,350.2	-1,790.03	-2,408.4	500.0	2,447.1	0.00	0.00	0.00
9,000.0	90.00	181.30	6,350.2	-1,790.03	-2,508.4	497.7	2,546.3	0.00	0.00	0.00
9,100.0	90.00	181.30	6,350.2	-1,790.03	-2,608.4	495.5	2,645.6	0.00	0.00	0.00
9,200.0	90.00	181.30	6,350.2	-1,790.03	-2,708.3	493.2	2,744.8	0.00	0.00	0.00
9,300.0	90.00	181.30	6,350.2	-1,790.03	-2,808.3	491.0	2,844.0	0.00	0.00	0.00
9,400.0	90.00	181.30	6,350.2	-1,790.03	-2,908.3	488.7	2,943.2	0.00	0.00	0.00
9,500.0	90.00	181.30	6,350.2	-1,790.03	-3,008.3	486.4	3,042.4	0.00	0.00	0.00
9,600.0	90.00	181.30	6,350.2	-1,790.02	-3,108.2	484.2	3,141.6	0.00	0.00	0.00
9,700.0	90.00	181.30	6,350.2	-1,790.02	-3,208.2	481.9	3,240.8	0.00	0.00	0.00
9,800.0	90.00	181.30	6,350.2	-1,790.02	-3,308.2	479.6	3,340.0	0.00	0.00	0.00
9,900.0	90.00	181.30	6,350.2	-1,790.02	-3,408.1	477.4	3,439.2	0.00	0.00	0.00
10,000.0	90.00	181.30	6,350.2	-1,790.02	-3,508.1	475.1	3,538.4	0.00	0.00	0.00
10,100.0	90.00	181.30	6,350.2	-1,790.02	-3,608.1	472.8	3,637.6	0.00	0.00	0.00
10,200.0	90.00	181.30	6,350.2	-1,790.01	-3,708.1	470.6	3,736.8	0.00	0.00	0.00
10,300.0	90.00	181.30	6,350.2	-1,790.01	-3,808.0	468.3	3,836.0	0.00	0.00	0.00
10,400.0	90.00	181.30	6,350.2	-1,790.01	-3,908.0	466.0	3,935.2	0.00	0.00	0.00
10,500.0	90.00	181.30	6,350.2	-1,790.01	-4,008.0	463.8	4,034.5	0.00	0.00	0.00
10,600.0	90.00	181.30	6,350.2	-1,790.01	-4,108.0	461.5	4,133.7	0.00	0.00	0.00
10,700.0	90.00	181.30	6,350.2	-1,790.00	-4,207.9	459.2	4,232.9	0.00	0.00	0.00
10,800.0	90.00	181.30	6,350.2	-1,790.00	-4,307.9	457.0	4,332.1	0.00	0.00	0.00
BHL: 470ft FSL & 949ft FWL of Sec 36										
10,880.2	90.00	181.30	6,350.2	-1,790.00	-4,388.1	455.2	4,411.6	0.00	0.00	0.00

Plan Annotations

MD (usft)	TVD (usft)	Local Coordinates		Comment
		+N/-S (usft)	+E/-W (usft)	
0.0	0.0	0.0	0.0	SHL: 317ft FNL & 439ft FWL of Sec 36
400.0	400.0	0.0	0.0	START NUDGE (2°/100ft BUR)
1,000.2	995.8	29.9	55.0	EOB TO 12° INC
3,469.4	3,411.0	275.4	506.2	END OF TANGENT
4,069.7	4,006.9	305.3	561.2	EOD TO VERTICAL
5,909.7	5,846.9	305.3	561.2	KOP (12°/100ft BUR)
6,534.7	6,308.1	-48.5	553.2	START OF TANGENT
6,634.7	6,334.0	-145.1	551.1	END OF TANGENT
6,759.7	6,350.2	-268.6	548.3	HZ LP *NEW*: 589ft FNL & 990.3ft FWL of Sec 36
10,880.2	6,350.2	-4,388.1	455.2	BHL: 470ft FSL & 949ft FWL of Sec 36